

MAIN STREET YARMOUTH SIDEWALK & STREETScape DESIGN



**TOWN COUNCIL MEETING
DRAFT RECOMMENDATIONS PRESENTATION
MAY 2, 2019**

DESIGN TEAM

- Terrence J DeWan & Associates – Lead Design / Landscape Architects
- Ransom Consulting, Inc. – Civil Engineers
- T.Y. Lin International – Traffic and Transportation Engineer
- Sarah Witte Landscape Architect
- Town of Yarmouth and the Main Street Improvement Committee

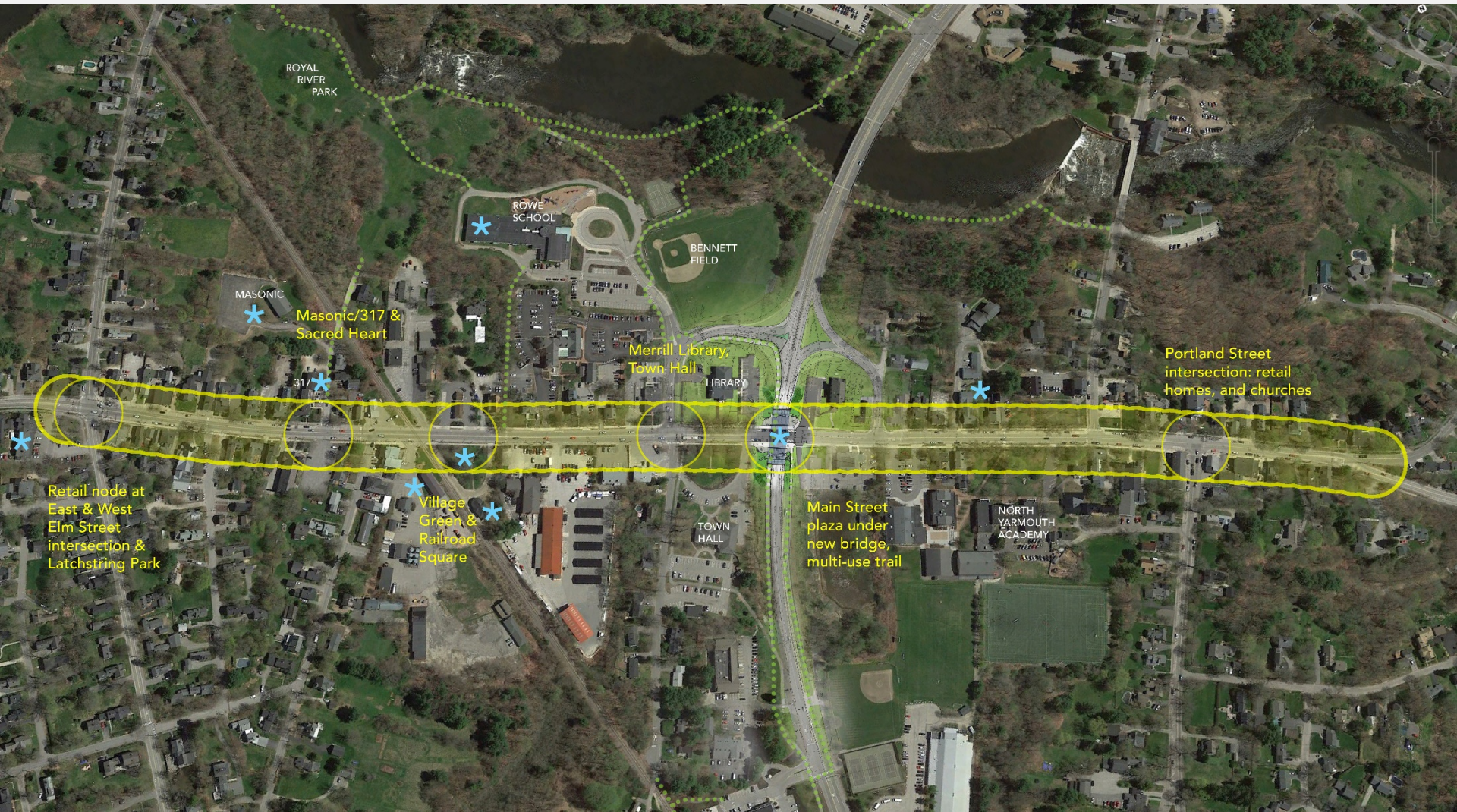


PRESENTATION / AGENDA

The background image shows a park-like setting. In the foreground, there is a paved path and a grassy area with fallen yellow leaves. A large tree trunk is visible on the right. In the middle ground, there is a white sign with the word "INTERMED" on it. In the background, there is a two-story light blue building with white trim and a black lamp post.

- **Project Introduction**
- **Existing Conditions / Issues**
- **Recommended Improvements**
- **Question and Answer**

Project Limits



Process...what has been done and what comes next...

- Project Kickoff (October 4)
- Analysis and Review
- Concept Planning
- Staff & Committee Meetings
- Public Input Meeting (November 27)
- Revisions and Studies
- Staff & Committee Meetings
- Updates to Plan
- Public Presentation (February 12)
- Estimating Phase I
- **Town Council (Draft Recommendations)**
- Draft Report
- Final Report (End of May)



Main Street's Strengths and Assets

- New England village character
- Existing and new businesses
- Vibrant and growing pedestrian activity
- On-street parking
- Host of the Yarmouth Clam Festival
- Opportunity for growth and redevelopment



EXISTING CONDITIONS



Sidewalk Materials

EXISTING CONDITIONS



Sidewalk Widths

EXISTING CONDITIONS



Sidewalk Widths

EXISTING CONDITIONS



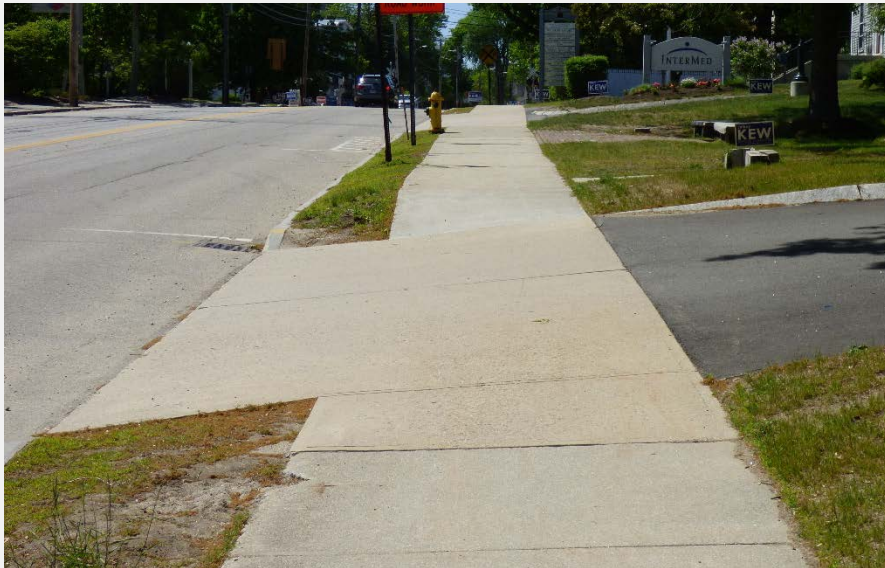
Obstacles to movement and safety

EXISTING CONDITIONS



Crosswalks

EXISTING CONDITIONS



ADA Compliance

EXISTING CONDITIONS



Intersections

EXISTING CONDITIONS



Access Management / Driveway Widths

EXISTING CONDITIONS



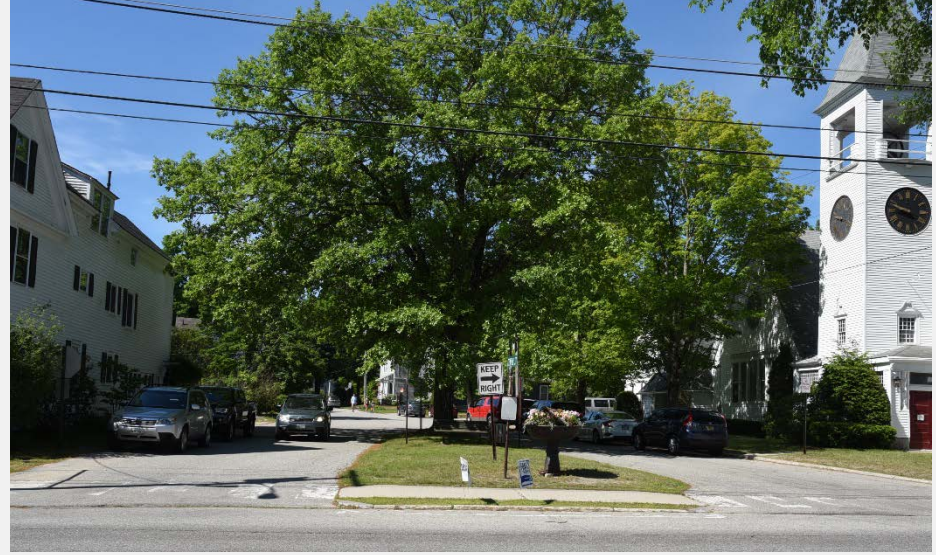
Street Trees and Landscape

EXISTING CONDITIONS



On Street Parking

EXISTING CONDITIONS



Neighborhood Access / Connectivity

EXISTING CONDITIONS



Lighting

EXISTING CONDITIONS



Amenities

EXISTING CONDITIONS

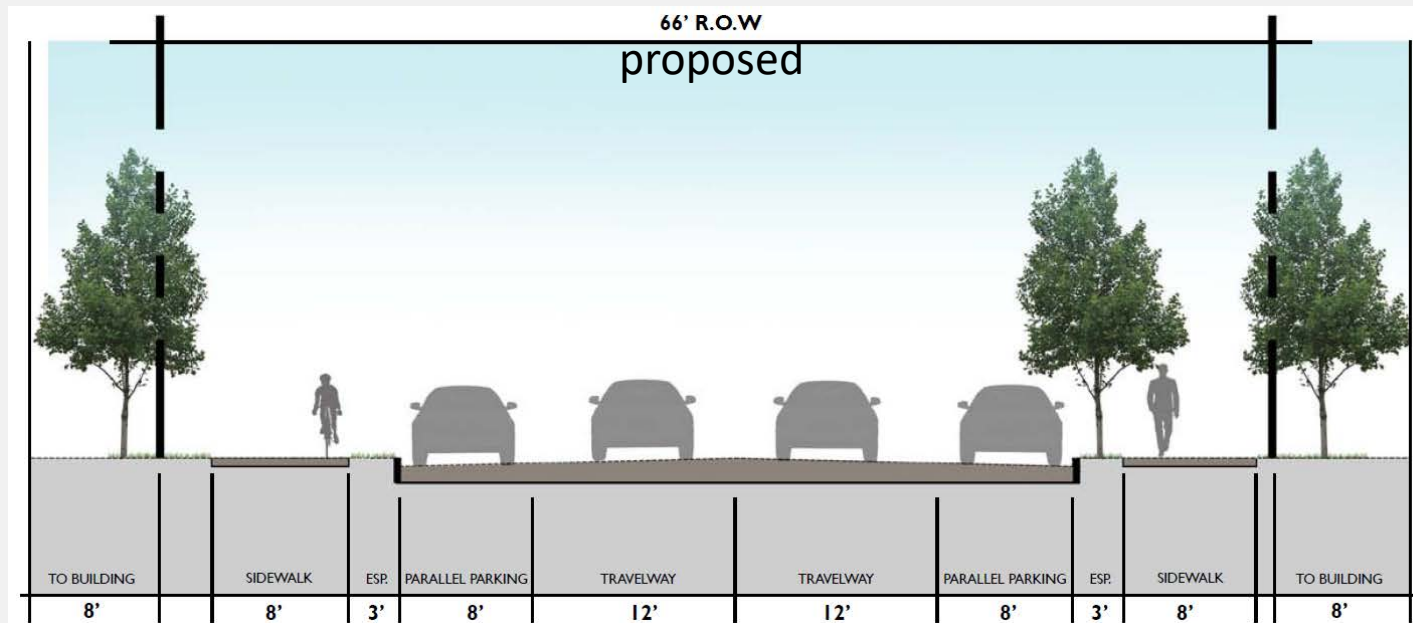
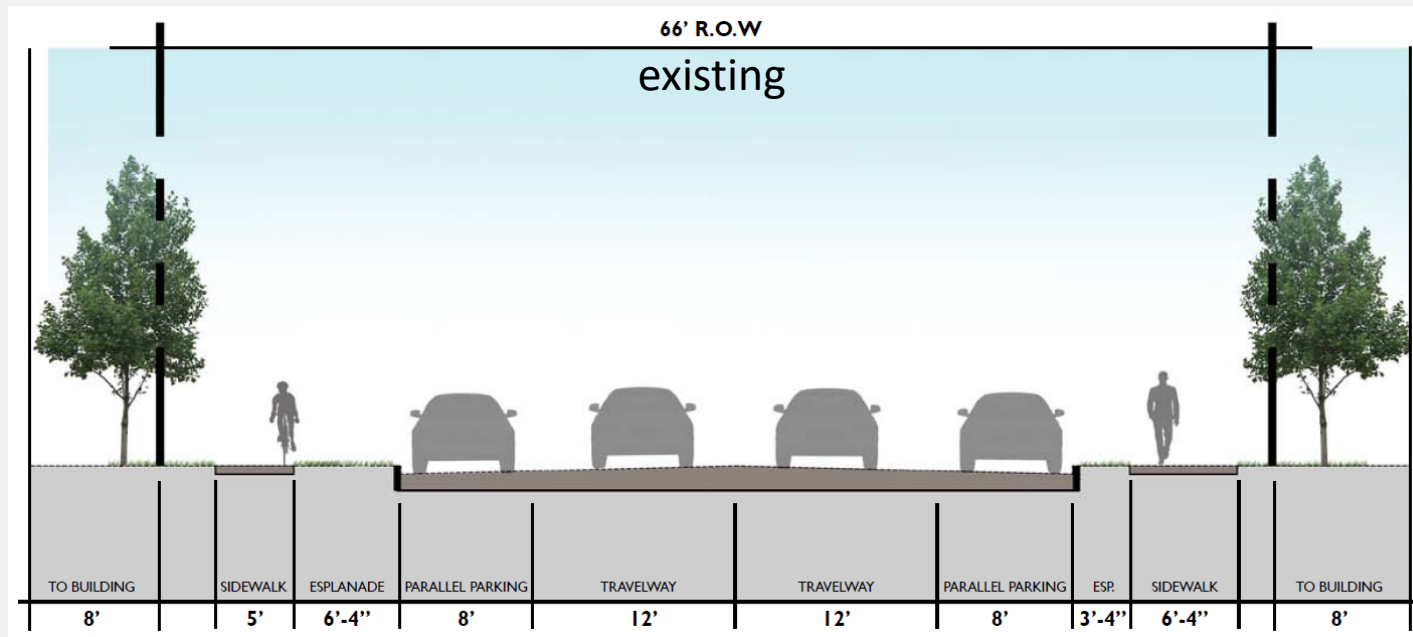


Character and Charm



IMPROVEMENTS

Main Street Sections



Sidewalks

- 8' wide sidewalks as minimum standard for entire project area
- 3' Esplanade as base standard



Sidewalk Materials



SCORED CONCRETE

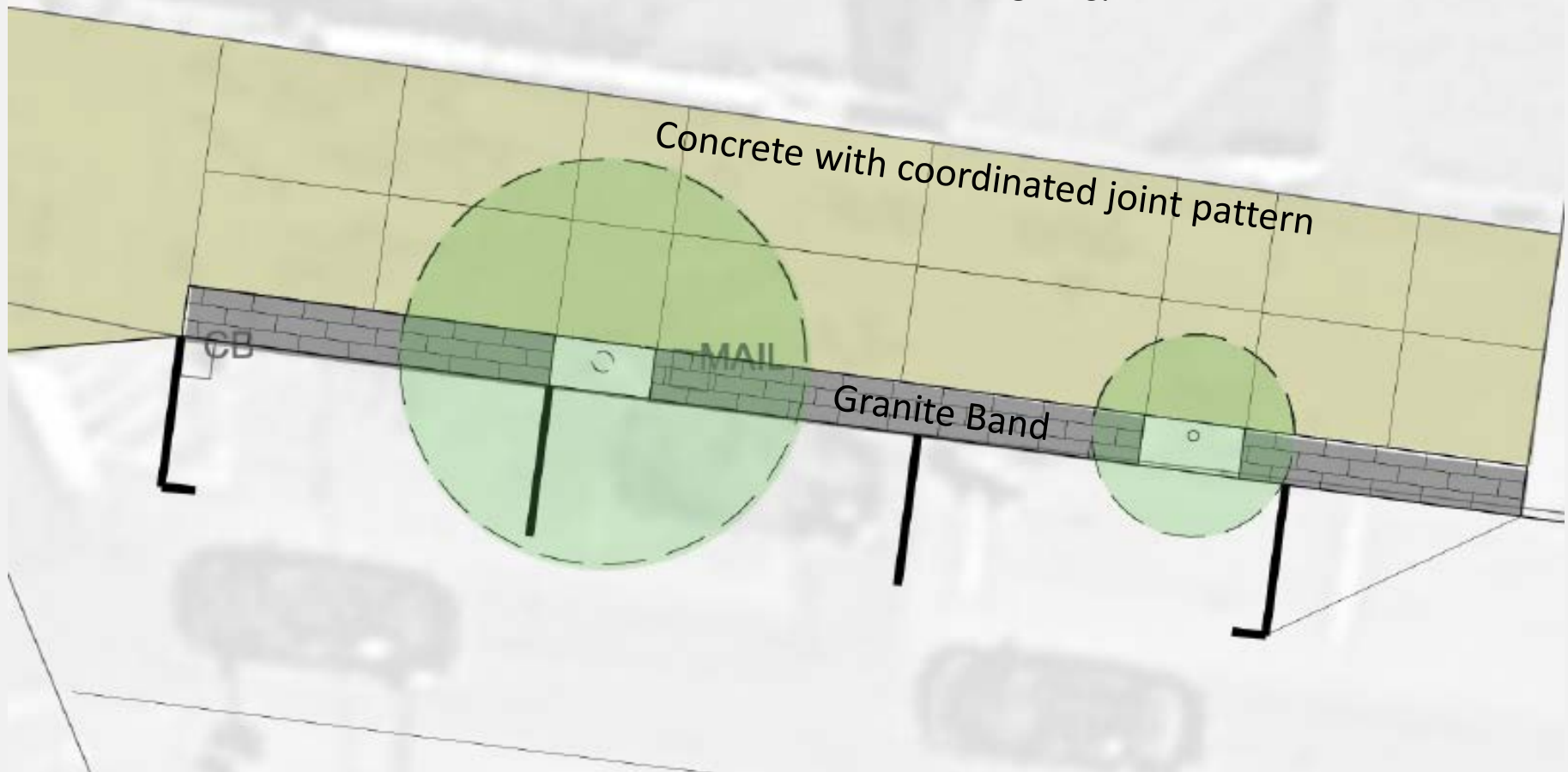
Sidewalk Treatments



Sidewalk Treatments

Handy's

Owl & Elm



Esplanades



Cobble



Tree Grates



Tree Cobbles



Crosswalks



Vertical curb with bump outs or curb extensions

Crosswalks



Sloped curb with bump outs or curb extensions

Crosswalk Materials



Granite Crosswalk

Crosswalk Materials



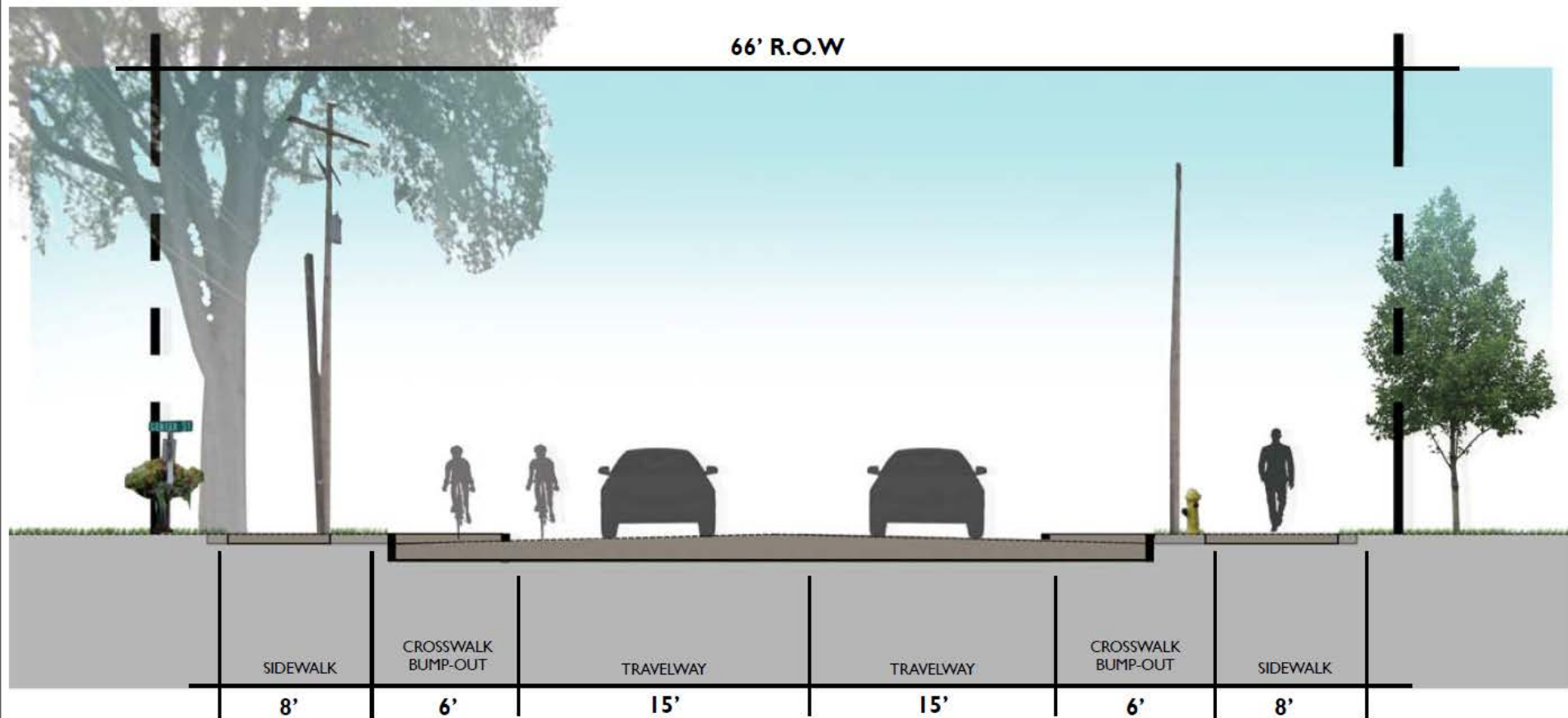
Concrete Unit Paver Crosswalk

Crosswalk Materials



Painted Crosswalk

Crosswalks



Center Street Crosswalks Section

Crosswalks



Center Street and Mill Street Crosswalks

Crosswalks

The image is a technical drawing overlaid on an aerial photograph of a city street, York Street. The drawing shows proposed landscaping and crosswalk locations. Key features include:

- Labels:** 'GATHER' at the top, 'YORK STREET' on the right, 'AMERICAN LEGION 'LOG CABIN'' at the bottom left, and 'KEYBANK' at the bottom center.
- Landscaping:** Large green circles represent trees. Smaller green circles with crosshairs represent specific tree locations or markers.
- Crosswalks:** Yellow rectangles indicate proposed crosswalk locations. Two purple asterisks mark specific points of interest or intersections.
- Technical Elements:** A blue dashed line indicates a 'ROUTE 1 OVERPASS'. Stationing markers like '300+00' and '1+11+00' are visible. A 'Concrete S Protection' note is present on the left.

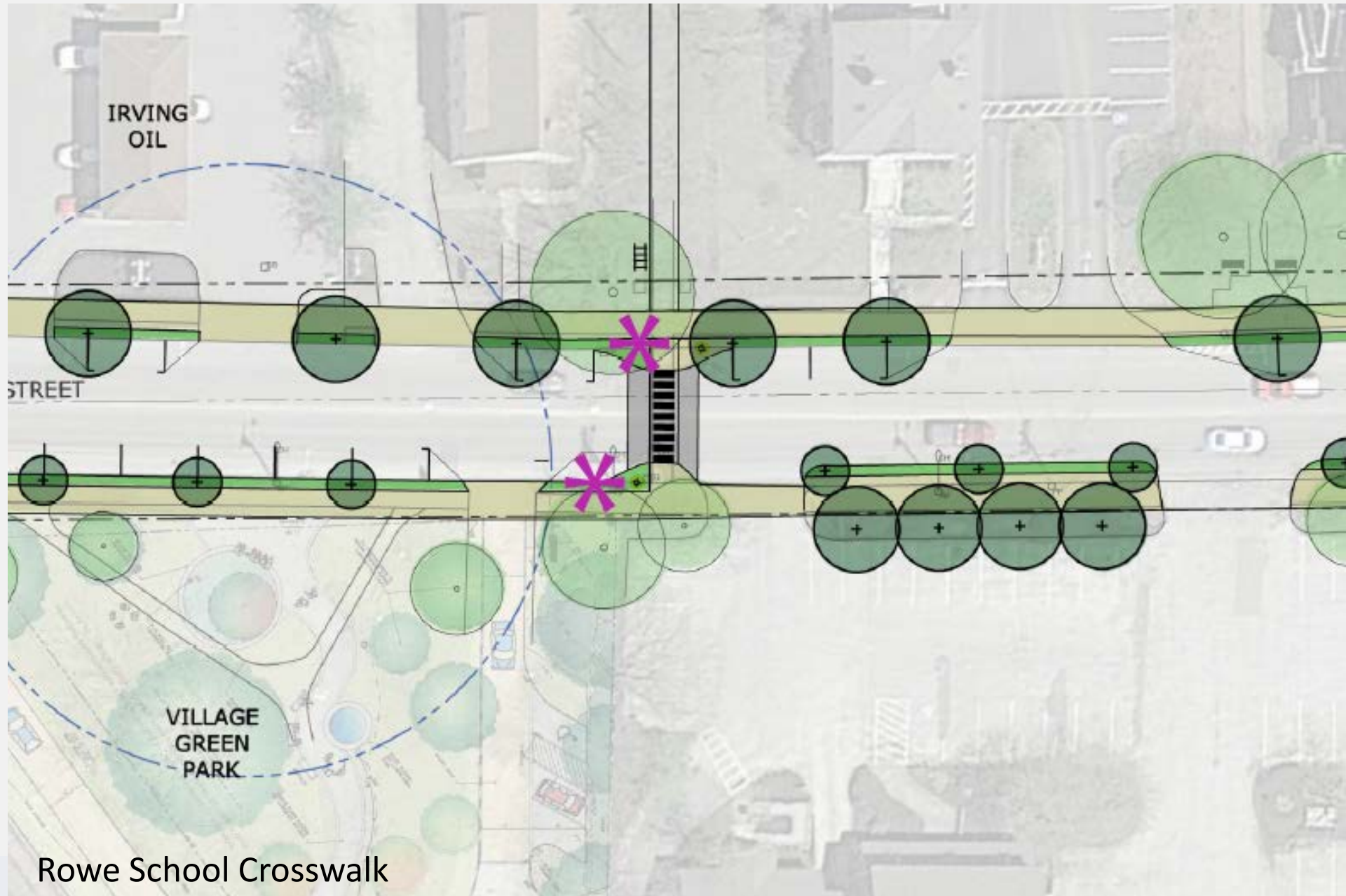
York Street Crosswalk

Crosswalks

The image is an aerial photograph of a city street, York Street, with various urban planning annotations. A horizontal yellow line runs across the middle of the image, representing a proposed crosswalk or a specific lane. Above this line, several green circles of varying sizes are placed, likely representing trees. Below the line, there are more green circles and a purple-shaded area. Two pink asterisks are placed on the right side of the image, one near the top and one near the bottom. Text labels include 'GATHER' at the top, 'YORK STREET' on the right, 'AMERICAN LEGION 'LOG CABIN'' at the bottom left, and 'KEYBANK' at the bottom center. On the far left, there is a vertical label 'ROUTE 1 OVERPASS' and some technical notes like '300+00' and 'Concrete S. Protection'. The overall image appears to be a technical drawing or a map used for urban planning purposes.

YORK STREET Crosswalk

Crosswalks

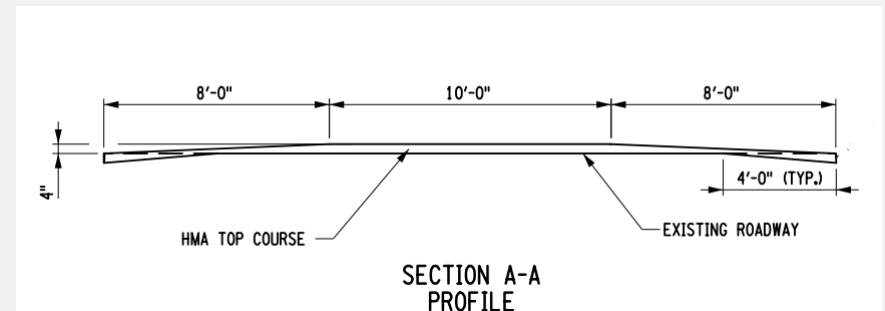


Rowe School Crosswalk

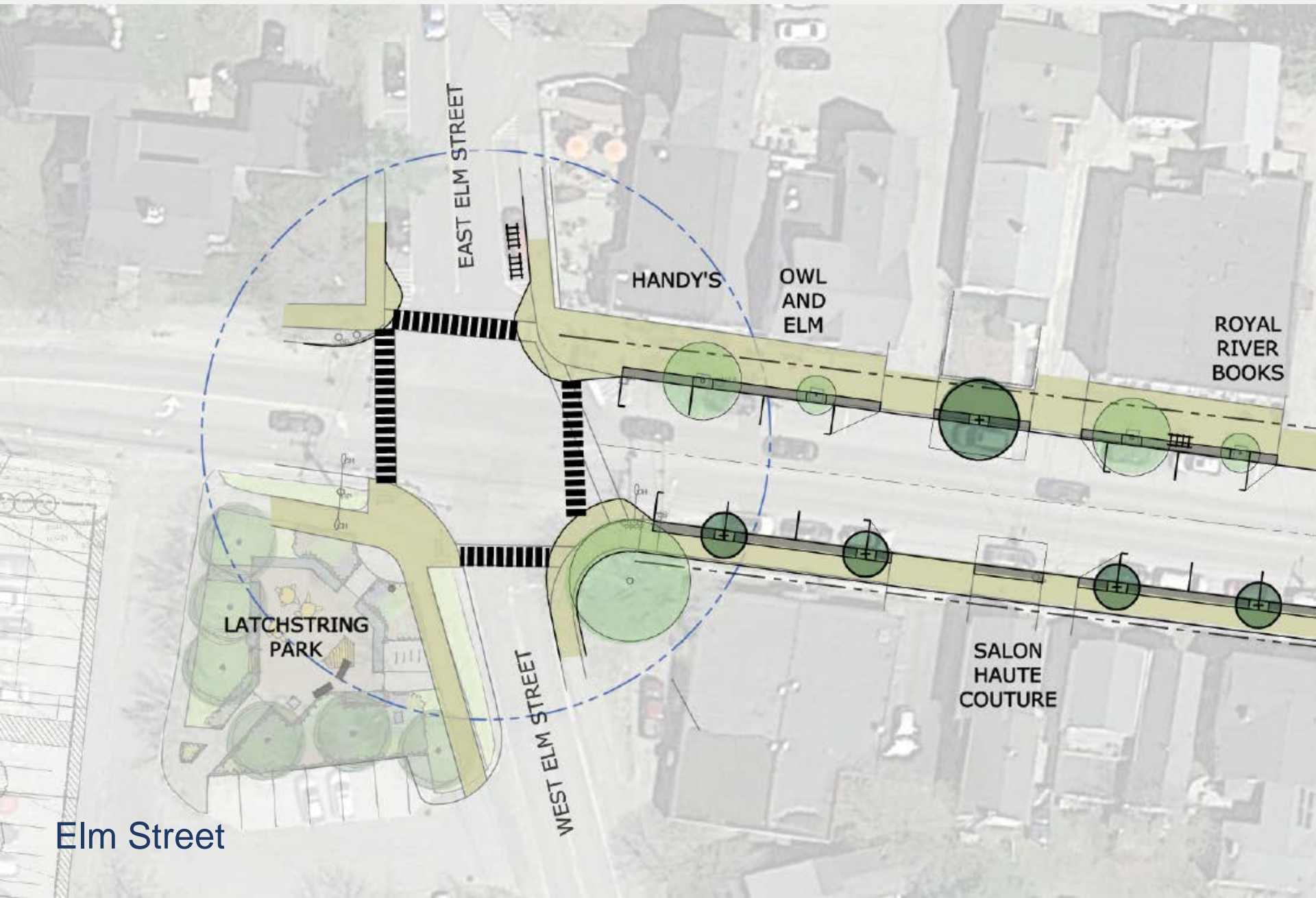
Raised Crosswalks



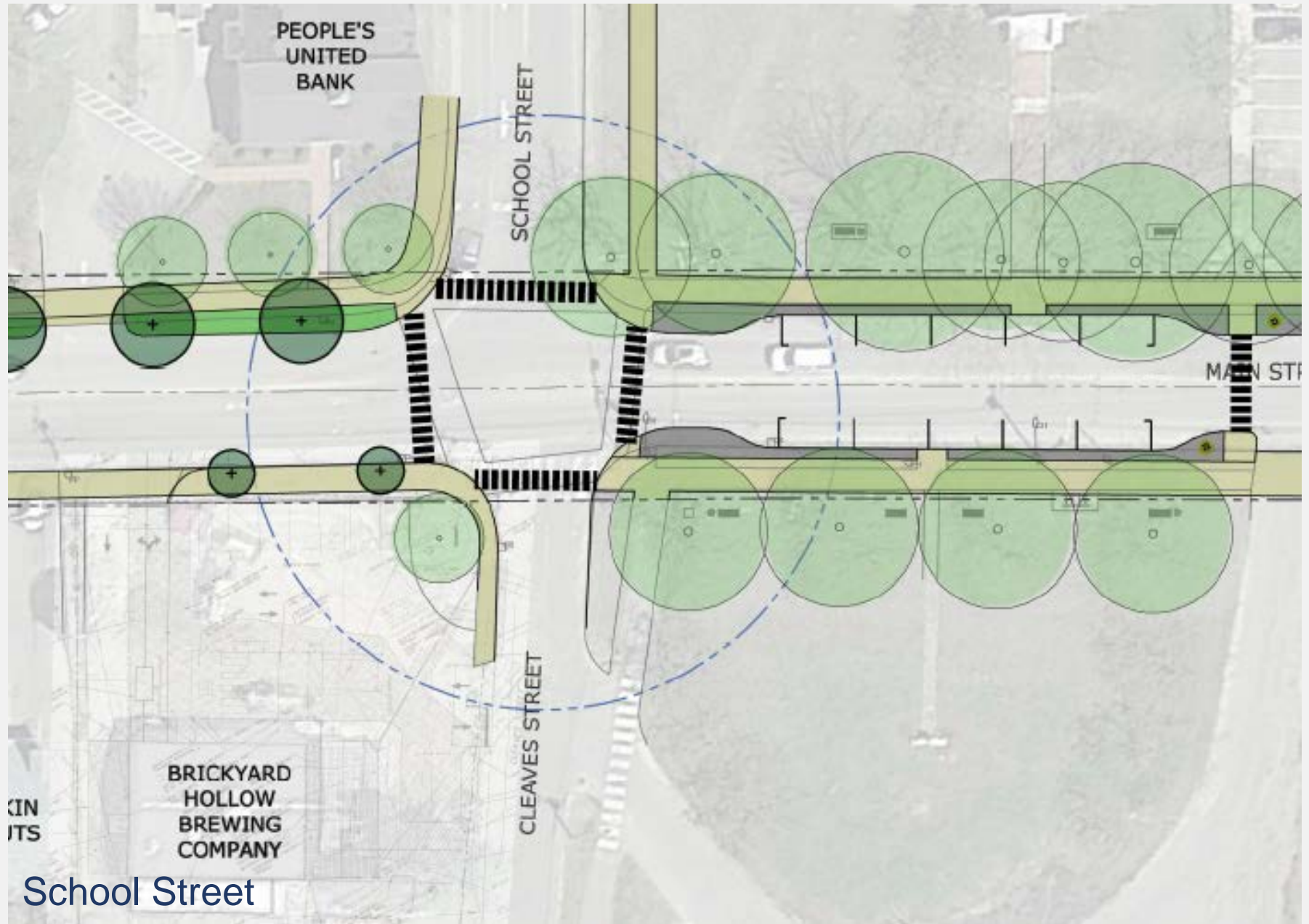
- Used to draw attention to a pedestrian crosswalk and reduce vehicle speeds, which increases yielding compliance
- *Not* speed bumps
 - Relatively gentle slopes on either side of crosswalks: typically 4% – 8% (approx. 6 inches over 8 feet)



Intersections

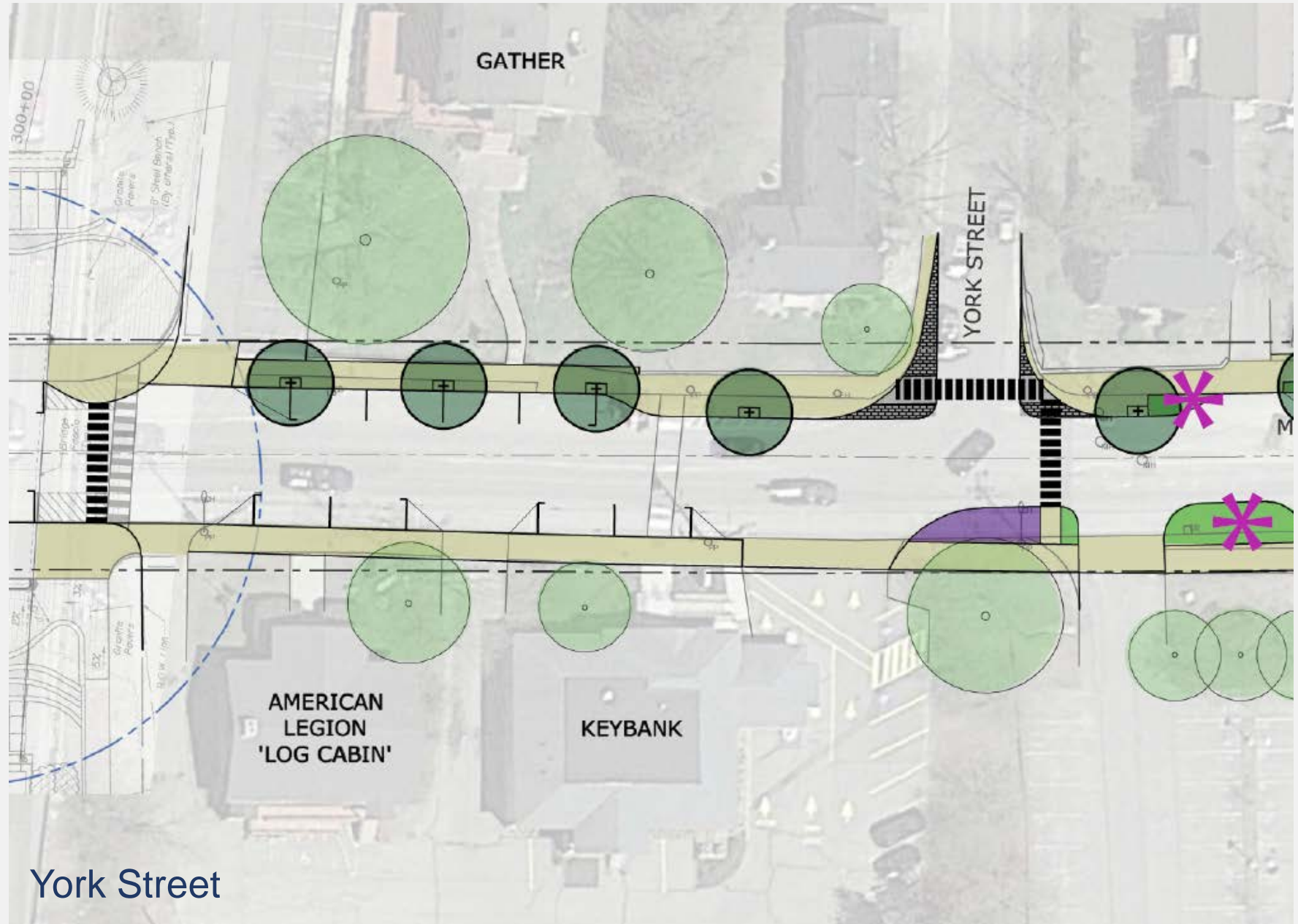


Intersections



School Street

Intersections

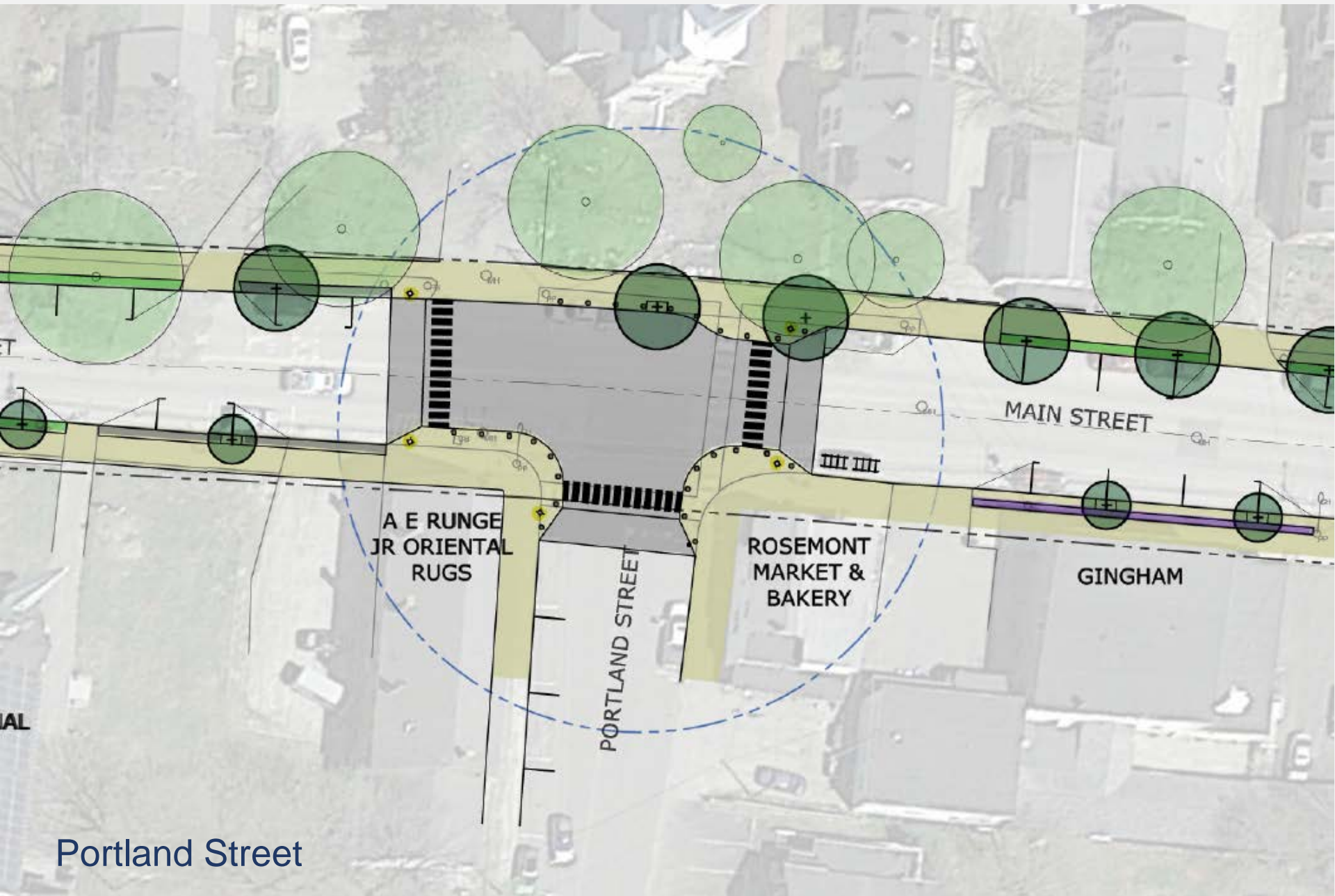


Intersections

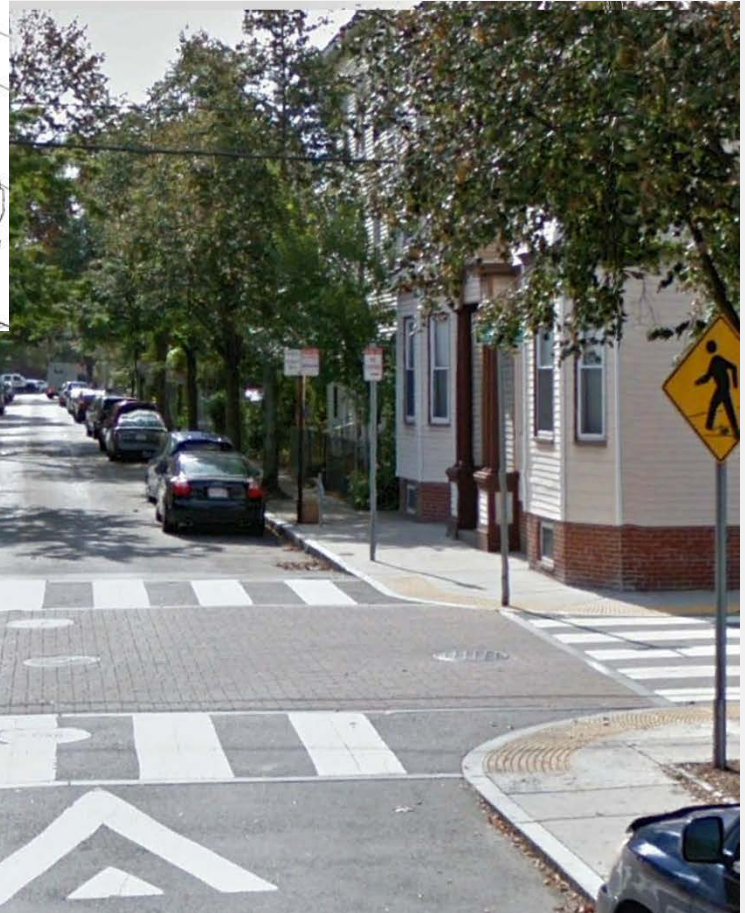


Roadway Narrowing

Intersections



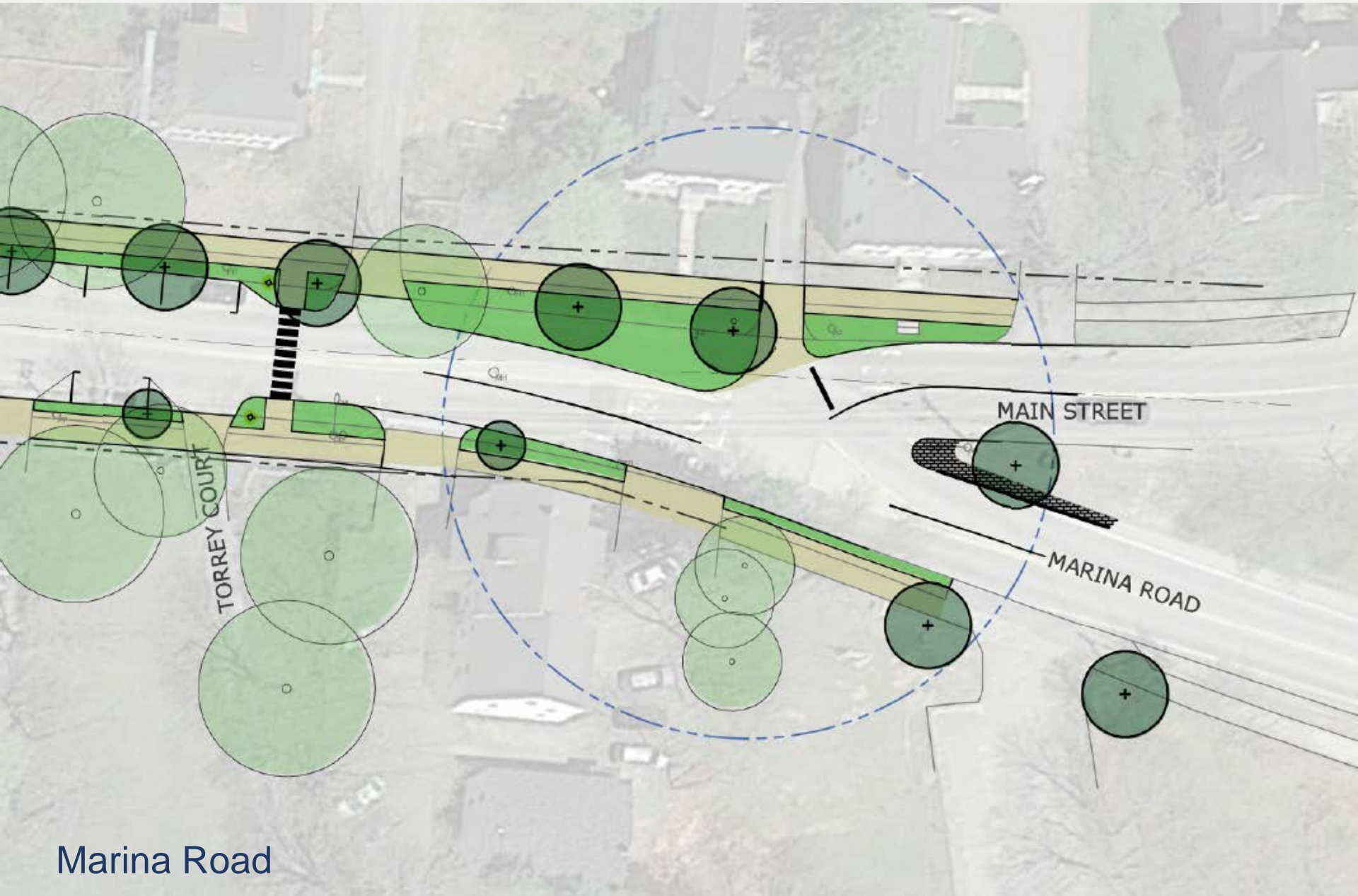
Raised intersection



Bollards



Intersections



Bicycle Accommodations



- Encourages bicyclists to ride in safe position when lane is too narrow for a motor vehicle and bicycle to safely travel side-by-side
- Indicates to motor vehicles drivers that bicyclists are allowed to occupy travel lane
- Helps prevent “dooring”

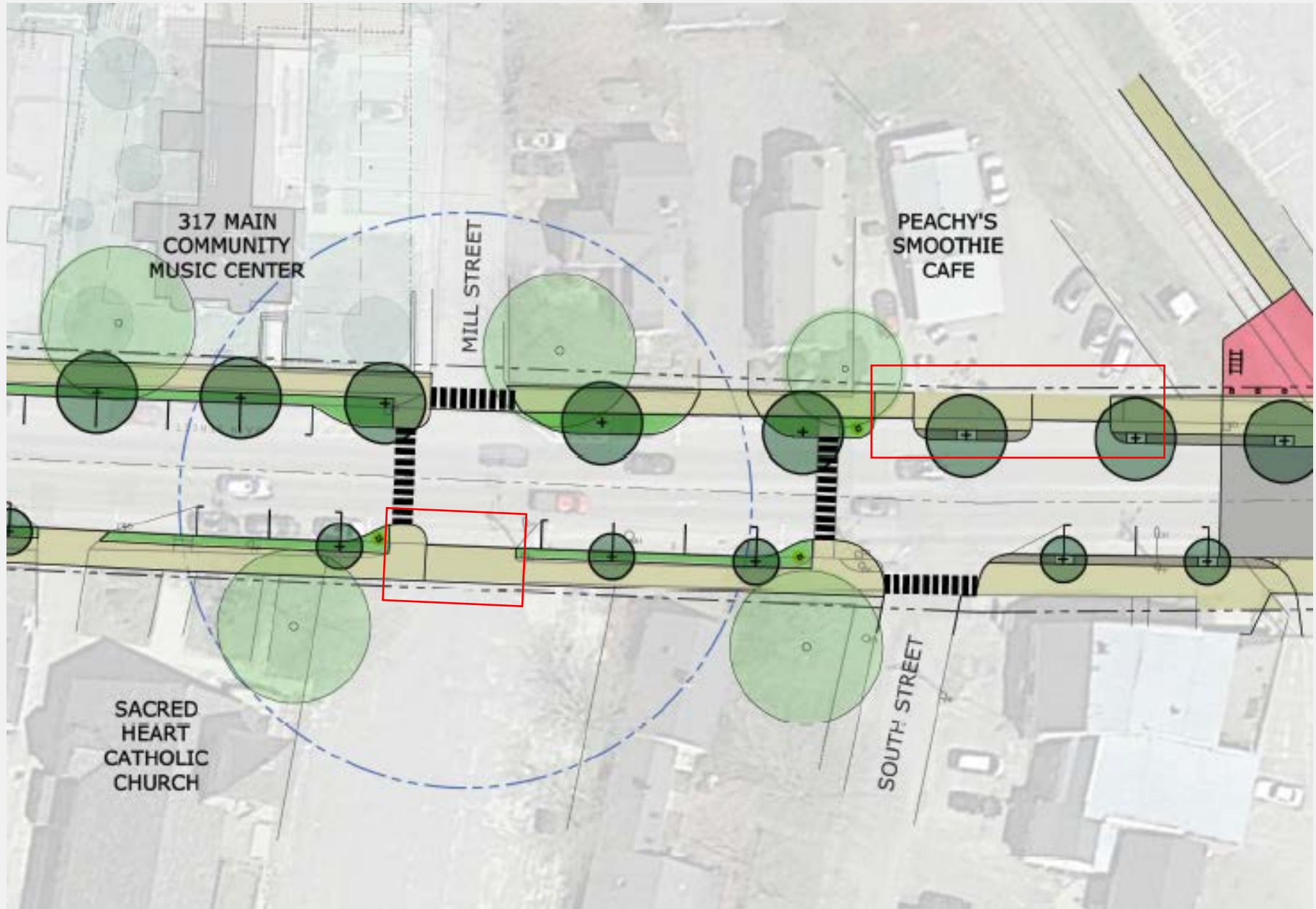
Shared Lane Marking

Bicycle Accommodations

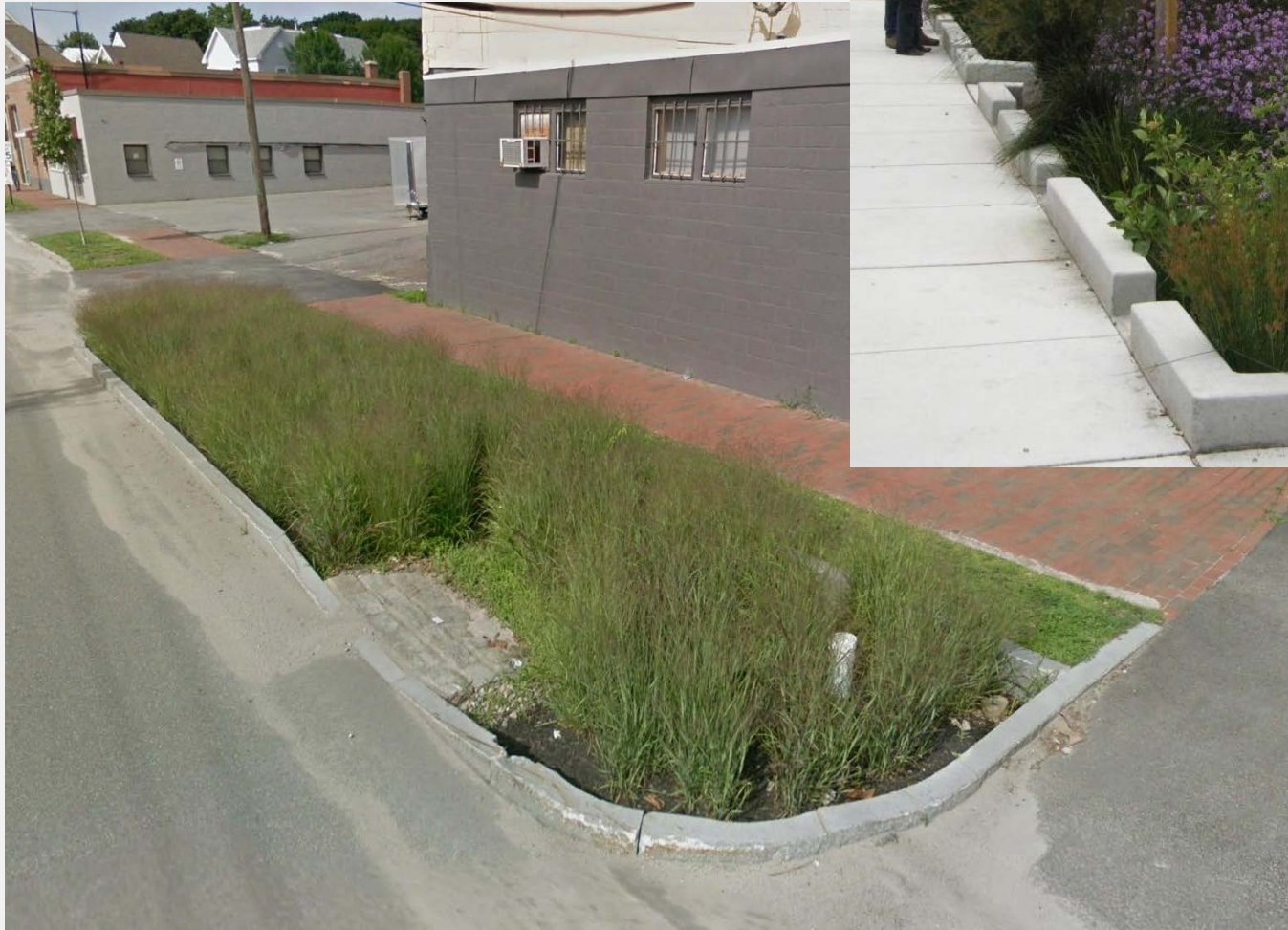


Bike Corral Parking and Racks

Access Management / Driveway Widths



Stormwater Treatment



Rain Gardens

Lighting

- **Future LED Conversion Project**
 - **Dark Sky Approved, 3000k Light (“warmer” than other LED’s)**
 - **More light and better distribution**
 - **Additional fixtures can be added to supplement dim areas**

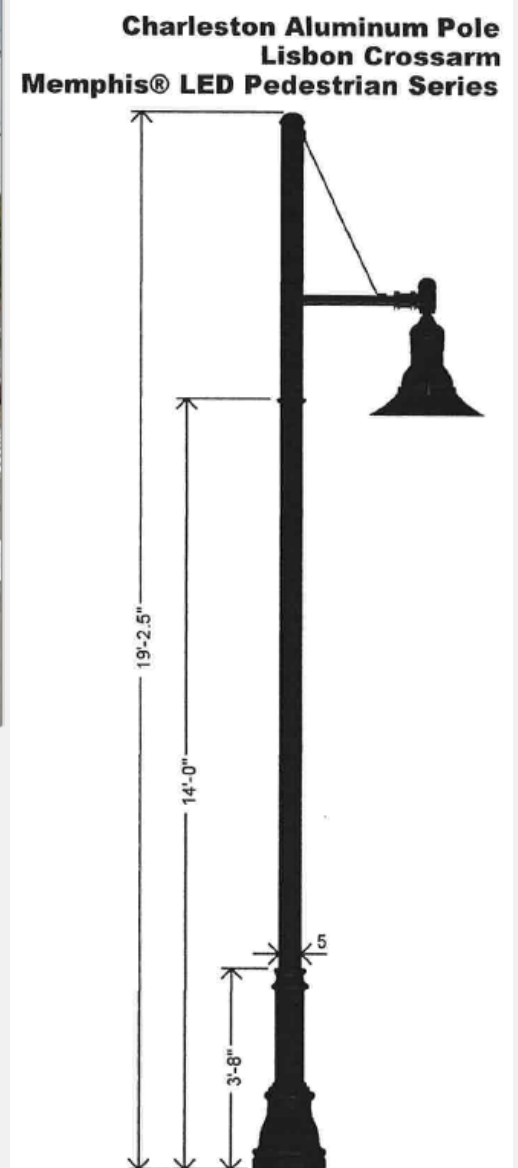
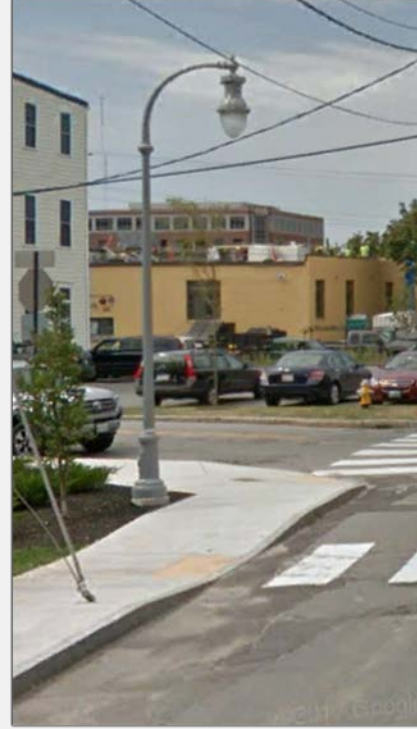


Lighting



Character and Safety

Lighting



Supplemental Options

Utility Relocation

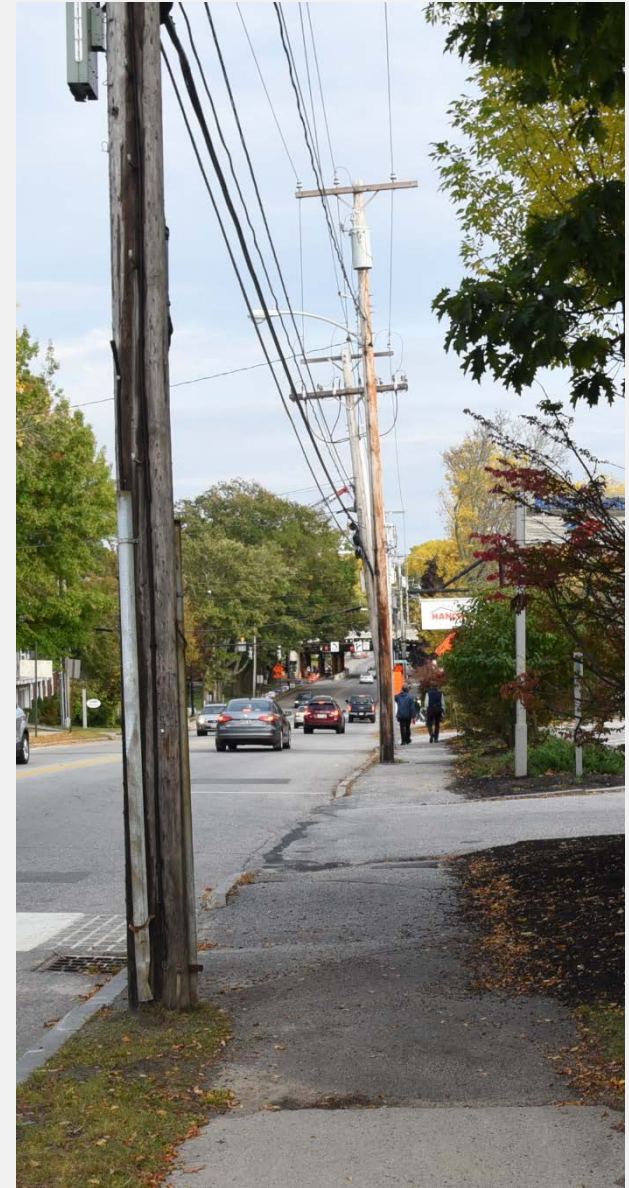
Estimate for utility line relocation study being provided by team as part of the report as not included in current contract.

Pros

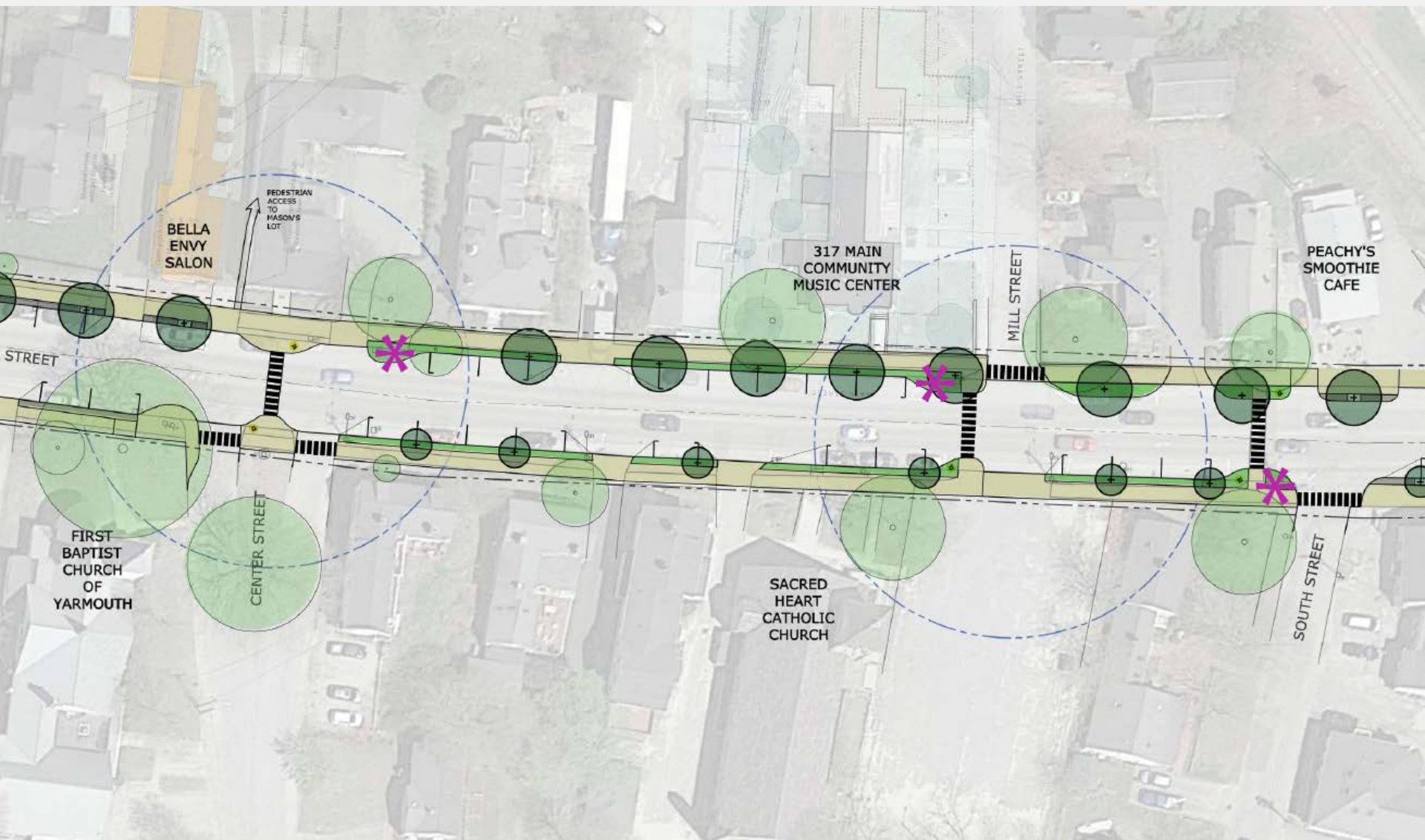
- Get poles / lines off of Main Street
- Opportunity for beautification with Trees and improved visual experience.
- Moving behind buildings would less expensive than putting underground
- Reconnection fees would be less expensive for property owners

Cons

- Poles and lines would need to be behind both sides of Main Street
- Need to replace lighting on Main Street
- Would likely require easements across all the properties
- Still likely to be expensive



Street Trees



Street Trees and Landscape



Young American Princeton Elm



10-15 year planted Princeton Elm



Princeton Elm fall color



American Elm street character

Princeton Elm - American Elm Hybrid



Young Bowhall Maple with fall color



10-15 year Celebration Maple



Red Sunset Red Maple fall color 10-15 year



Autumn Blaze Maple

Acer Rubrum - Red Maple and Red Maple Hybrids

large tree species

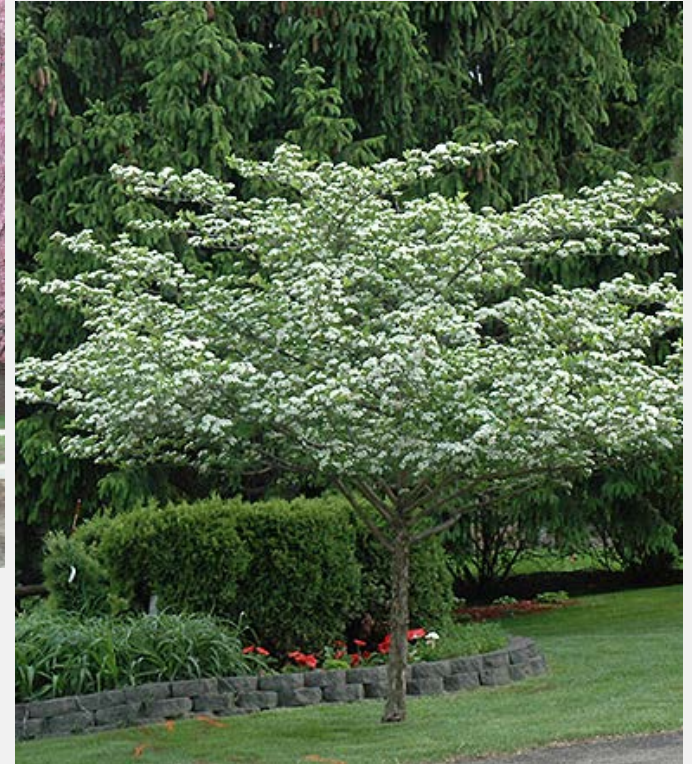
Street Trees and Landscape



Amelanchier (Shadbush)



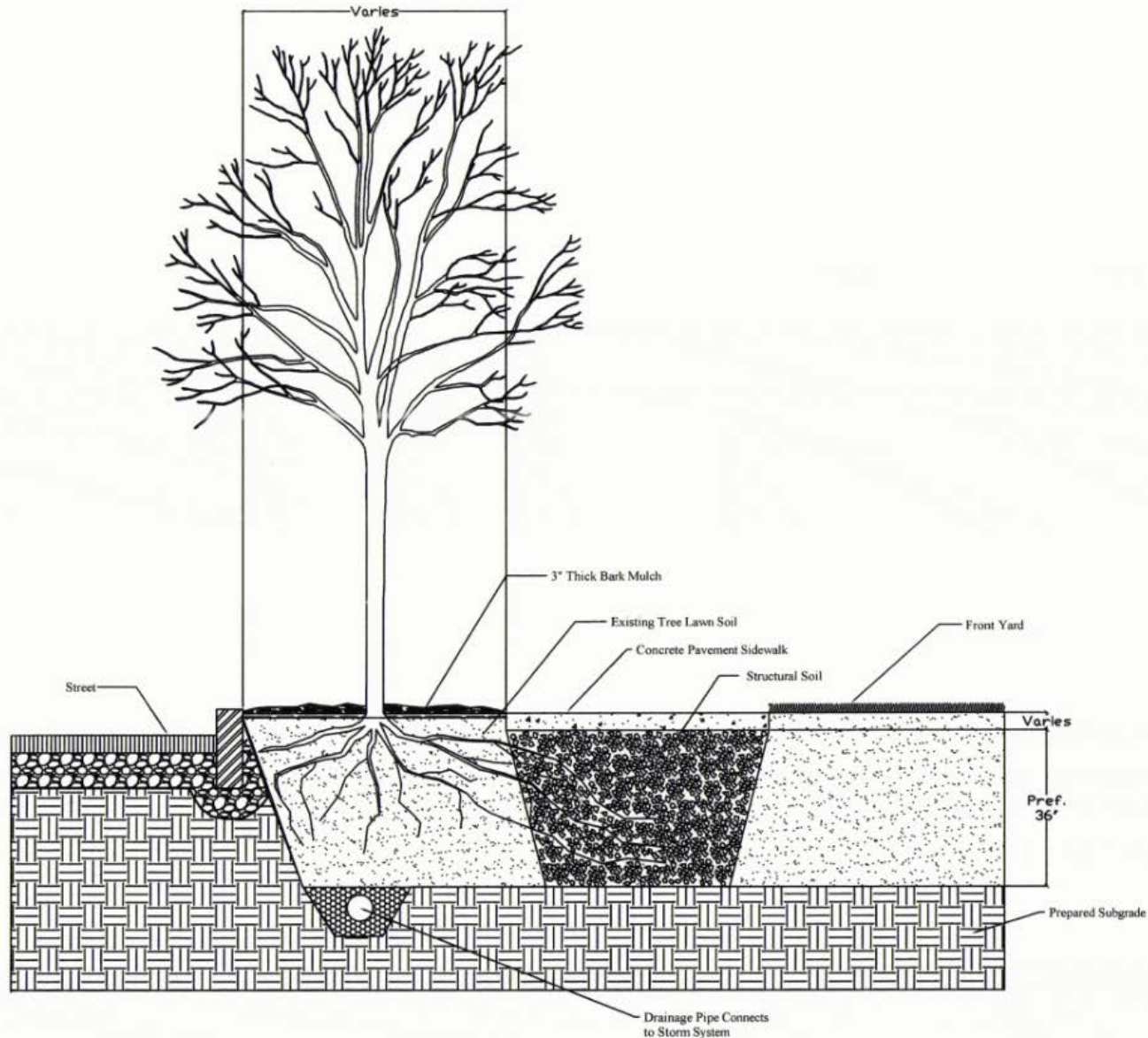
Prunus (Flowering Cherry)



Crataegus crusgalli
(Cockspur Thornless Hawthorn)

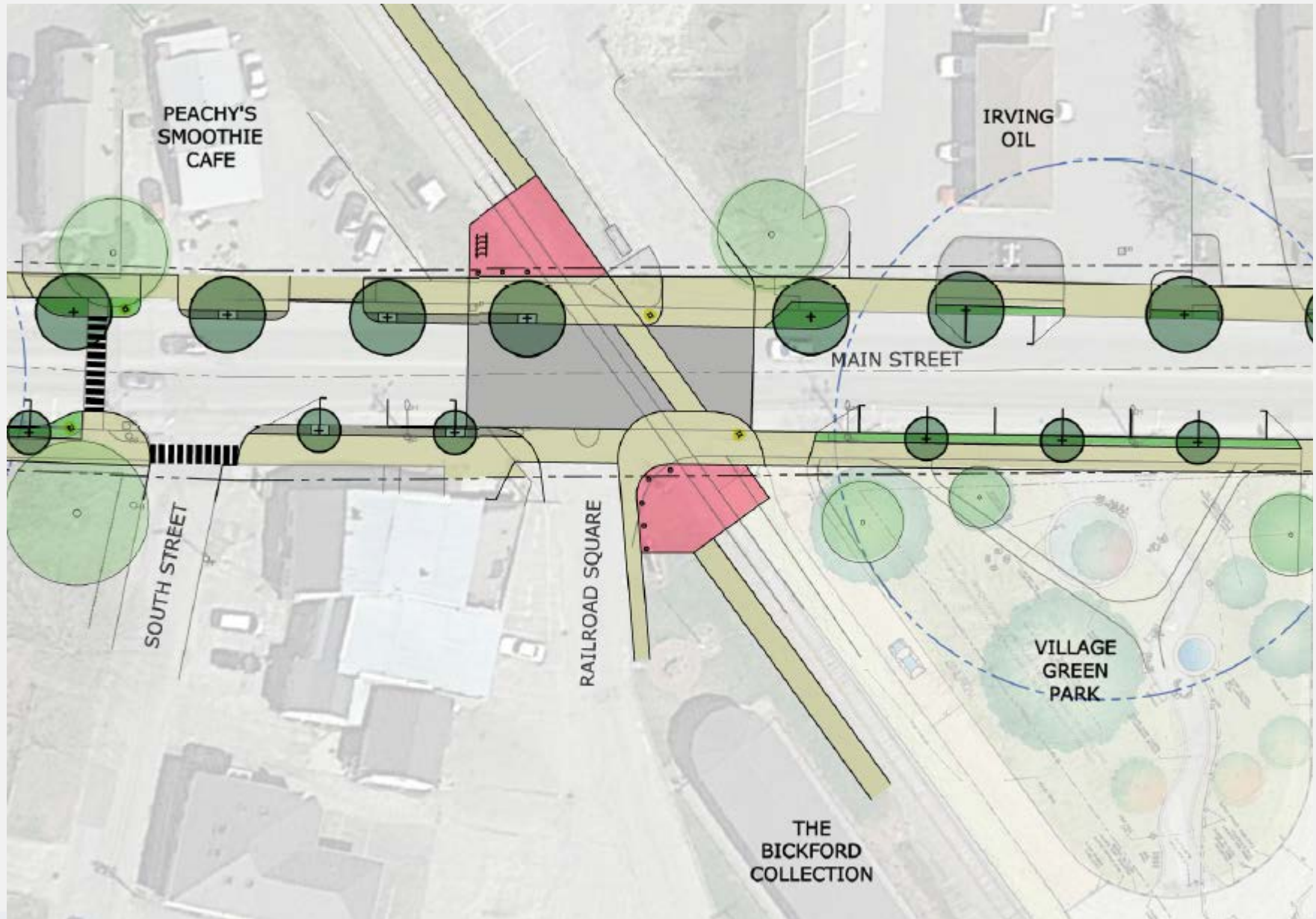
Smaller trees species

Street Trees and Landscape



Structural Soil

Rail Crossing and Future Rail Trail



Latchstring Park Concept



Amenities



Continue the character and charm

Public Art



Paving Opportunities

Public Art



Benches