



Old Baptist Meeting House
1796, 1825, 1837, 25 Hillside Street, National Register

HISTORIC CONTEXT

YARMOUTH'S ARCHITECTURAL HERITAGE

2018 ARCHITECTURAL SURVEY OF YARMOUTH

- Study area: Historic Village along Main Street and adjoining streets
- Conducted by Consultant Margaret Gaertner, with Village Improvement Society, Yarmouth History Center, and Community Volunteers; funded by Maine Historic Preservation Commission Grant
- **773 structures on 547 parcels**, surveyed, photographed, added to database
- **11 properties listed in National Register** of Historic Places (2 outside study area), and **70 properties in study potentially individually eligible**
- Report recommends 3 historic districts & development of preservation plan

WHAT IS A HISTORIC CONTEXT STATEMENT?

- “The purpose of a historic context statement is to **place built resources in the appropriate historic, social, and architectural context** so that the relationship between an area’s physical environment and its broader history can be established.”
- “A historic context statement is not intended to be a comprehensive history. Rather, its purpose is **to highlight trends and patterns critical to the understanding** of the built environment.”
 - Quoted from the California Preservation Foundation website

WHAT IS IN THIS HISTORIC CONTEXT STATEMENT?



353, 354, 356 and 360 Main Street

- Summary of Yarmouth's Social History
- Architectural Significance and Visual Character – General Characteristics
- Description of 3 Proposed Historic Districts
 - Social History, Location and Period of Significance
 - Description of Architectural Character
- Bibliography and Footnotes

EARLY HISTORY

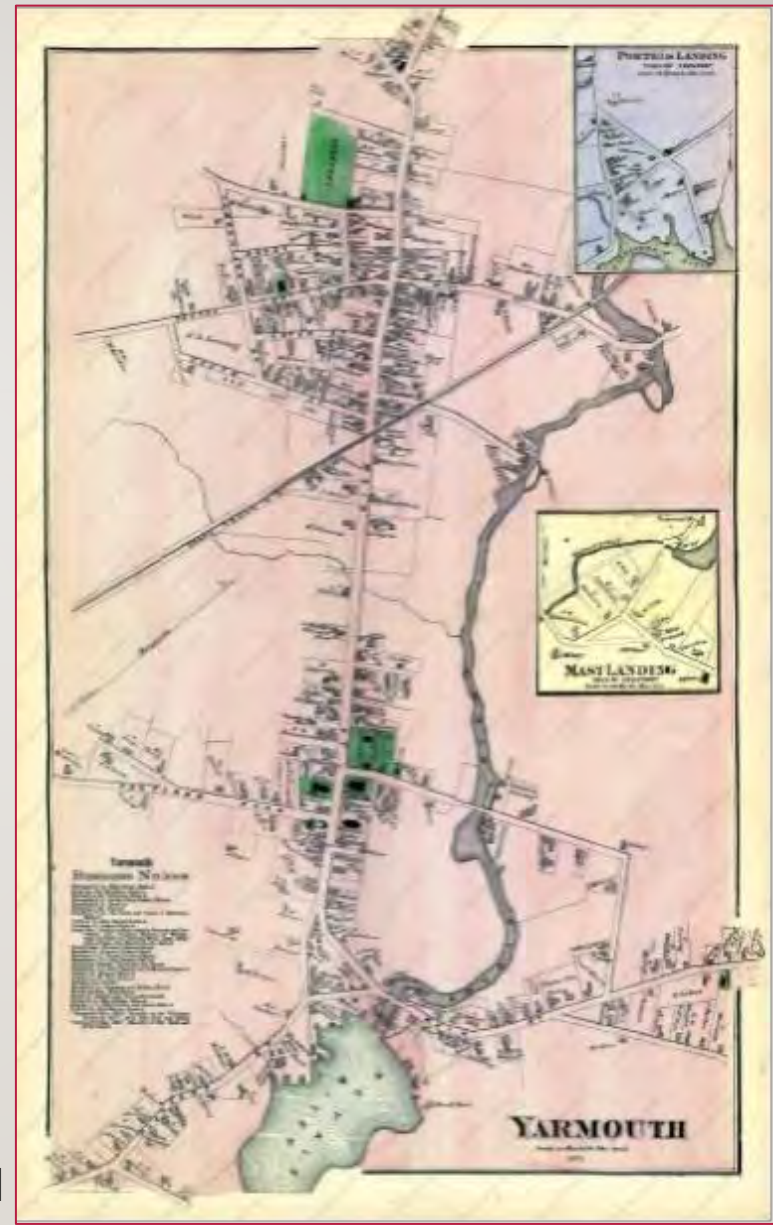
- Location attracted indigenous people of the Wabanaki Nation and European settlers
- Earliest permanent English settlement began 1715
- Moved inland late 1700s/early 1800s



Rev. Ammi R. Cutter House, c. 1730, 60 Gilman Road

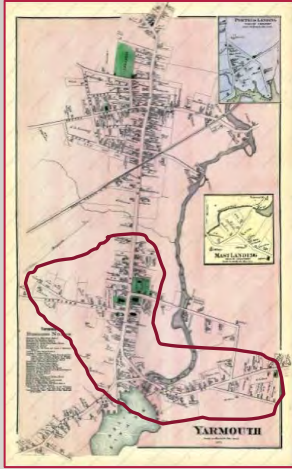
YARMOUTH'S TWO VILLAGES & FOUR FALLS

- Upper Village and Lower Village, each has its own identity
- Harbor and Royal River's 4 Falls are where industries grew



Beers Map 1871

LOWER VILLAGE



Royal River Harbor View c. 1875



Jeremiah Baker House, c. 1848,
35 East Main Street

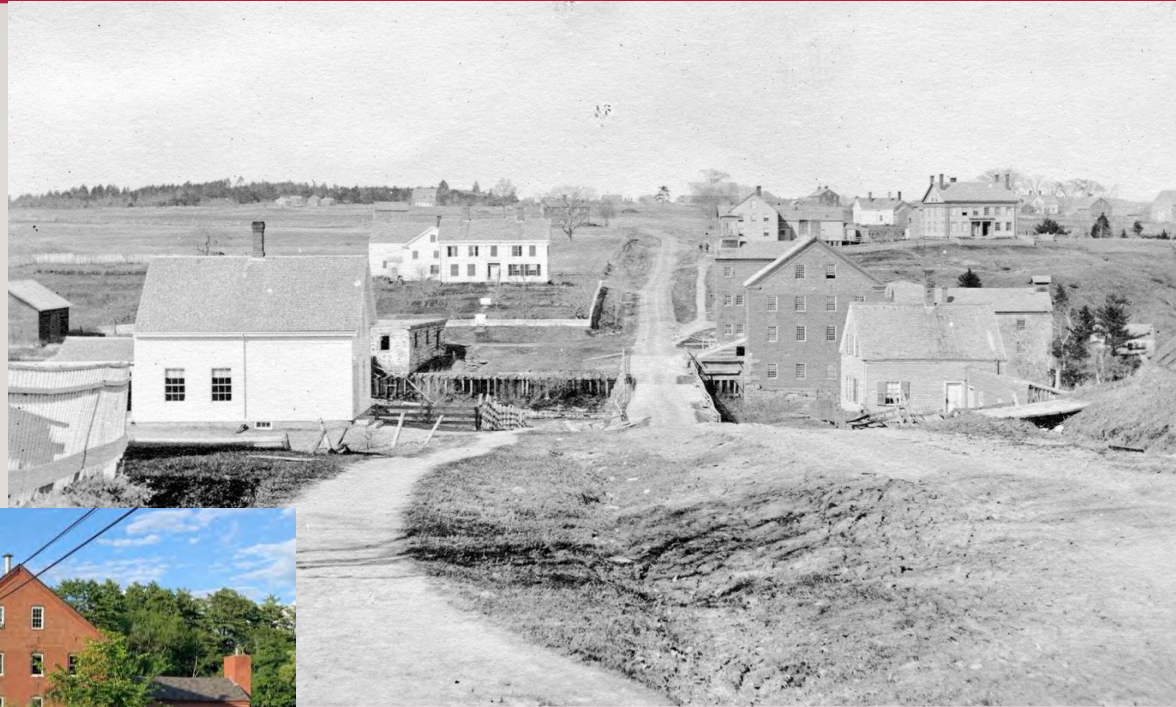
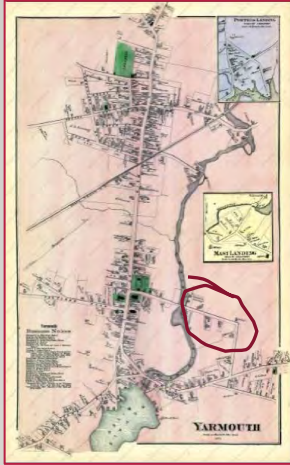
Centered on shipbuilding
300 ships built 1850-1925

LOWER VILLAGE



- Businesses started to serve the shipbuilding industry and residents
- First Falls supported provided waterpower
- Supported sawmills and grist mills, later produced electricity

ROYAL RIVER MANUFACTURING COMPANY (SPARHAWK MILL)



Royal River Manufacturing Company, c. 1875
and 2020

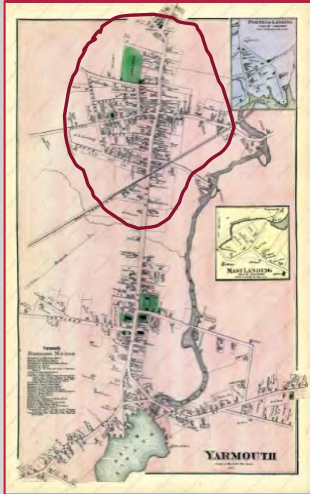


Textile mill at 2nd
Falls

Built late 1840s;
rebuilt 1855;
tower added 1885

Made yarns and
cotton grain bags

UPPER VILLAGE



Old Baptist Meeting House

Centered at the Old Baptist Meeting House, and later where Main Street and East and West Elm Streets intersect

Industries: potteries and tanneries; mills at 3rd & 4th falls

Grand Trunk and Maine Central Railroads crossed just beyond Elm and Main

Forest Paper Company dominates: 1864-1923

UPPER VILLAGE – FOREST PAPER COMPANY



George Hammond



Forest Paper Company, c. 1900



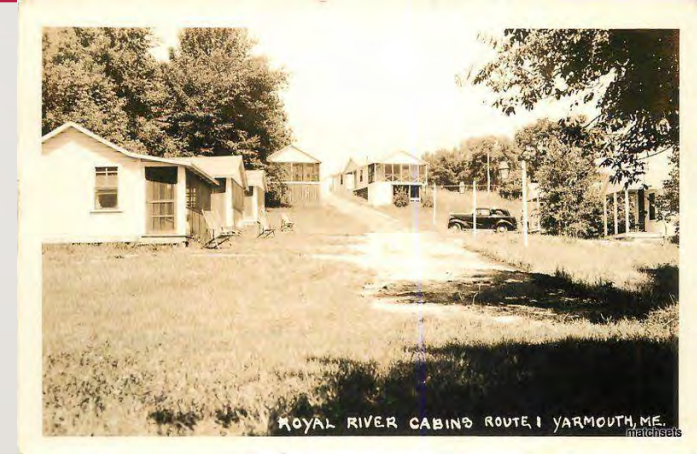
Camp Hammond, 1889-90,
275 Main Street, NR

Located at Third Falls, Operated 1864-1923, Used train line, Burned 1931

Employed 275 people, had 10 buildings at its peak; Paid $\frac{1}{4}$ Town taxes in 1906

20TH CENTURY CHANGES

- Tourism becomes an Industry
 - Trolley Line 1898
 - Route One 1914; Expanded 1948
- After World War II
 - Suburbanization, new housing
 - Population increases
 - New transportation: Cousins Island Bridge - 1955; Interstate 295 - 1961



YARMOUTH'S VISUAL & ARCHITECTURAL CHARACTER



Central Parish (1st Universalist) Church, 1859-60; 97 Main Street
Architect: Augustus Holt (NR)

- Retains identity as an authentic New England Village
- Houses and religious, commercial and institutional buildings tell the story of the Town and its residents
- Residential and rural character: side yards and setbacks; original barns; spreads out away from Main Street



159 Portland Street. Greek Revival

YARMOUTH'S VISUAL & ARCHITECTURAL CHARACTER



Dr. Ammi R. Mitchell House, c. 1821,
333 Main Street, NR

- Fine examples of styles from 1700s - early 1900s
 - Noted Maine architects and unknown master builders
 - Mostly wood frame construction; 2-2.5 stories
- Buildings from different time periods are interspersed
 - Homesteads divided, buildings added, remodeled, moved
 - Town grew organically over time
- Many retain architectural integrity and good condition

YARMOUTH'S VISUAL AND ARCHITECTURAL CHARACTER



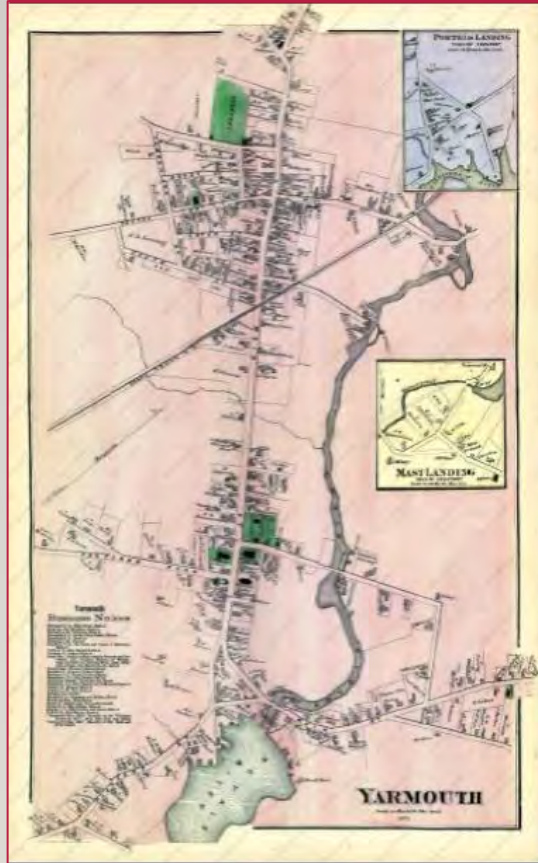
Cyrus Foss Sargent House, c. 1864, 251 Main Street

- Many buildings are repurposed, but still retain their architectural character



Grand Trunk Depot, 1906, 288 Main Street, NR

THREE HISTORIC DISTRICTS ARE PROPOSED



- Lower Village Historic District
- Royal River Manufacturing Company Historic District
- Upper Village Historic District

PROPOSED INITIAL DISTRICTS: LOWER VILLAGE HISTORIC DISTRICT 1780-1940



View from Portland Street to Main Street
c. 1875

- Reflects Yarmouth's early history, shipbuilding industry and the mills at the first falls.
- Residences, commercial, educational and religious buildings along Main Street and Portland Street reflect the high aspirations and economic success of its citizens.
- Historic buildings display a high degree of architectural integrity and convey the social history of the town and its residents.

ARCHITECTURAL CHARACTER: LOWER VILLAGE HISTORIC DISTRICT 1780-1940



William Stockbridge House, 1815
51 East Main Street



Johnathan True House, 1780
43 East Main Street



48 Marina Road

Early residences along East Main Street reflect the prosperity of the Town's shipbuilding industry and mills at the first falls.

ARCHITECTURAL CHARACTER: LOWER VILLAGE HISTORIC DISTRICT 1780-1940



Sargent House, 1825, 124 Main St.



Seabury House, 1846, 49 Main St.



163 Main Street



Storer General Store, 108 Main St.

Residences along Main Street include varied architectural styles.



Harvey House, 1859, 109 Main St.

ARCHITECTURAL CHARACTER: LOWER VILLAGE HISTORIC DISTRICT 1780-1940



First Parish Congregational
Church, 1867, 116 Main St., NR



North Yarmouth Academy, 1841
141 Main Street, NR



Casco Lodge #36, 1872
189 Main Street

Religious and institutional buildings have a strong presence along Main Street.

PROPOSED INITIAL DISTRICTS: ROYAL RIVER MANUFACTURING COMPANY HISTORIC DISTRICT 1840-1950



Royal River Manufacturing Company complex
1840, 1855, 1885, 80 and 81 Bridge Street

- Encompasses the historic cotton mill complex established in the 1840s at the second falls of the Royal River, and later modified and expanded, and related structures.
- Significant for its role in Yarmouth's industrial history and for its role as a major employer in the Town.

PROPOSED INITIAL DISTRICTS:
**ROYAL RIVER MANUFACTURING COMPANY
HISTORIC DISTRICT 1840-1950**



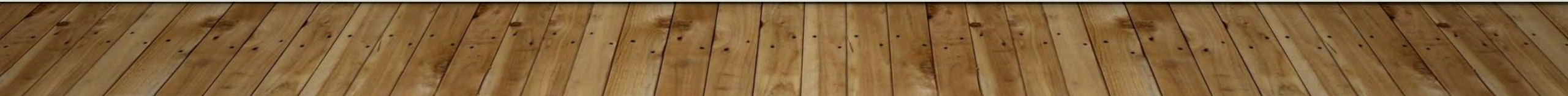
Worker housing, 107 Bridge Street



Phillip Kimball House and Barn, c. 1840, 100 Bridge Street



Buildings in the district include boarding houses for the workers and the residence of Phillip Kimball, who owned a previous cotton mill on the site.



PROPOSED INITIAL DISTRICTS: UPPER VILLAGE HISTORIC DISTRICT 1780-1940



The Brick Block, c. 1862
355, 357, 359 Main Street

- Developed around the Old Baptist Meeting House and now centered at Main and Elm Streets, which is retail and commercial core. Side streets mostly residential.
- Little remains of papermaking and other industries, but surviving houses represent the prosperity they created.
- Significant as a remarkably well-preserved collection of buildings with a high degree of integrity.
- Retains the feeling of an intact 19th century New England village and represents the development of Yarmouth.

ARCHITECTURAL CHARACTER: UPPER VILLAGE HISTORIC DISTRICT 1780-1940



Five surviving buildings and the steeple of the First Baptist Church are still part of the vibrant retail and commercial core on Main Street, near Elm., c. 1900 and 2020.

ARCHITECTURAL CHARACTER: UPPER VILLAGE HISTORIC DISTRICT 1780-1940



Merrill Memorial Library
1904-05, 215 Main Street
By Alexander Wadsworth
Longfellow



First Baptist Church, 1889
346 Main Street
By John Calvin Stevens



Capt. Sylvanus Blanchard House
1855, 317 Main Street
By Charles Alexander

Important civic, religious and residential buildings are located on Main Street.

ARCHITECTURAL CHARACTER: UPPER VILLAGE HISTORIC DISTRICT 1780-1940



Dr. Ammi R. Mitchell House
c. 1770-1800, 33 Center Street



Charles W. Jordan House & Barn
1877, 42 Center Street



Patrick Haney House
c. 1849, 58 Hillside Street

The Old Baptist Meeting House neighborhood has a network of streets with houses of various styles and time periods, many with attached barns, and interconnected lawns.

ARCHITECTURAL CHARACTER: UPPER VILLAGE HISTORIC DISTRICT 1780-1940



Corliss House, 1800, 9 Church St.



Blanchard House, c. 1848, 49 South St.



Coombs House, c. 1896, 74. South St.



Humphrey House, 1850, 27 Church St.



Dunn Store, 1865, 3 Church St.

The architectural quality and diversity in the Meeting House area reflects the prosperity of the Town in the 19th century.

ARCHITECTURAL CHARACTER: UPPER VILLAGE HISTORIC DISTRICT 1780-1940



Prince House, 1863, 87 West Elm Street



Cleaves House, 30 West Elm St.



Boarding House, 92 East Elm St.



151 West Elm Street

A mix of architectural styles can be seen on Elm Street.



Gooch House, 1849, 30 East Elm Street

ARCHITECTURAL CHARACTER: UPPER VILLAGE HISTORIC DISTRICT 1780-1940



Cutter House, 1795, 163 W Main Street



Capt. Reuben Merrill House, 1858
233 West Main Street, NR



Storer House, c. 1802, 43 W Main St.

West Main is more residential and rural with wider spacing and deeper setbacks. A number of early buildings.

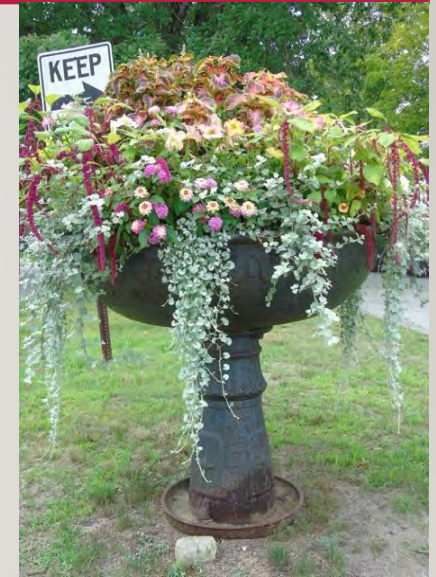
YARMOUTH'S ICONIC HISTORIC ARCHITECTURE



- TELLS THE STORY OF THE TOWN AND ITS PEOPLE
- PROVIDES THE DISTINCTIVE IDENTITY OF YARMOUTH
- CREATES A UNIQUE, WALKABLE COMMUNITY THAT ATTRACTS RESIDENTS, BUSINESSES AND VISITORS

THANK YOU

- Historic Resources Steering Committee
- Town of Yarmouth Planning Department
- Maine Historic Preservation Commission
- Village Improvement Society
- Yarmouth History Center and its Volunteers
- Maine Preservation
- Margaret Gaertner, Historic Preservation Consultant
- Deb Andrews and Julie Larry, guest presenters



Center Street
horse trough