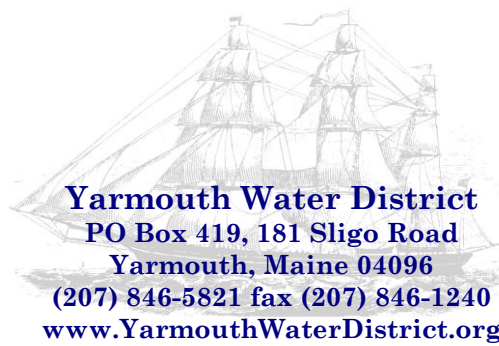


Eric Gagnon
Superintendent



Irving C. Felker, Jr.
Chairman, Board of Trustees

October 6, 2022

Travis Letellier
Via Email: tletellier@acorn-engineering.com

RE: 90 Main Street, Yarmouth

Dear Travis,

This letter is to inform you that the Yarmouth Water District can serve the above-referenced project, and will provide service in accordance with Maine Public Utilities Commission and the Yarmouth Water District Terms and Conditions.

This project can take service from the existing 12" water main on Portland Street as shown on the redlined plan attached. A 4" line must be installed across Portland Street to allow for two individual 2" HDPE CTS services to be connected to the system. One service will be used for each dwelling. In previous correspondence, it was stated that flow requirements for the domestic and life safety systems are 50 GPM for each dwelling. At this flow rate, a 1" meter will be required to be installed in each dwelling. Please provide the District with a statement from the fire sprinkler company stating the flow requirements to ensure the meter is properly sized. All life safety systems must be installed down stream of the water meter.

Please keep us informed as the project progresses. If you can have questions or concerns, feel free to contact me.

Sincerely,

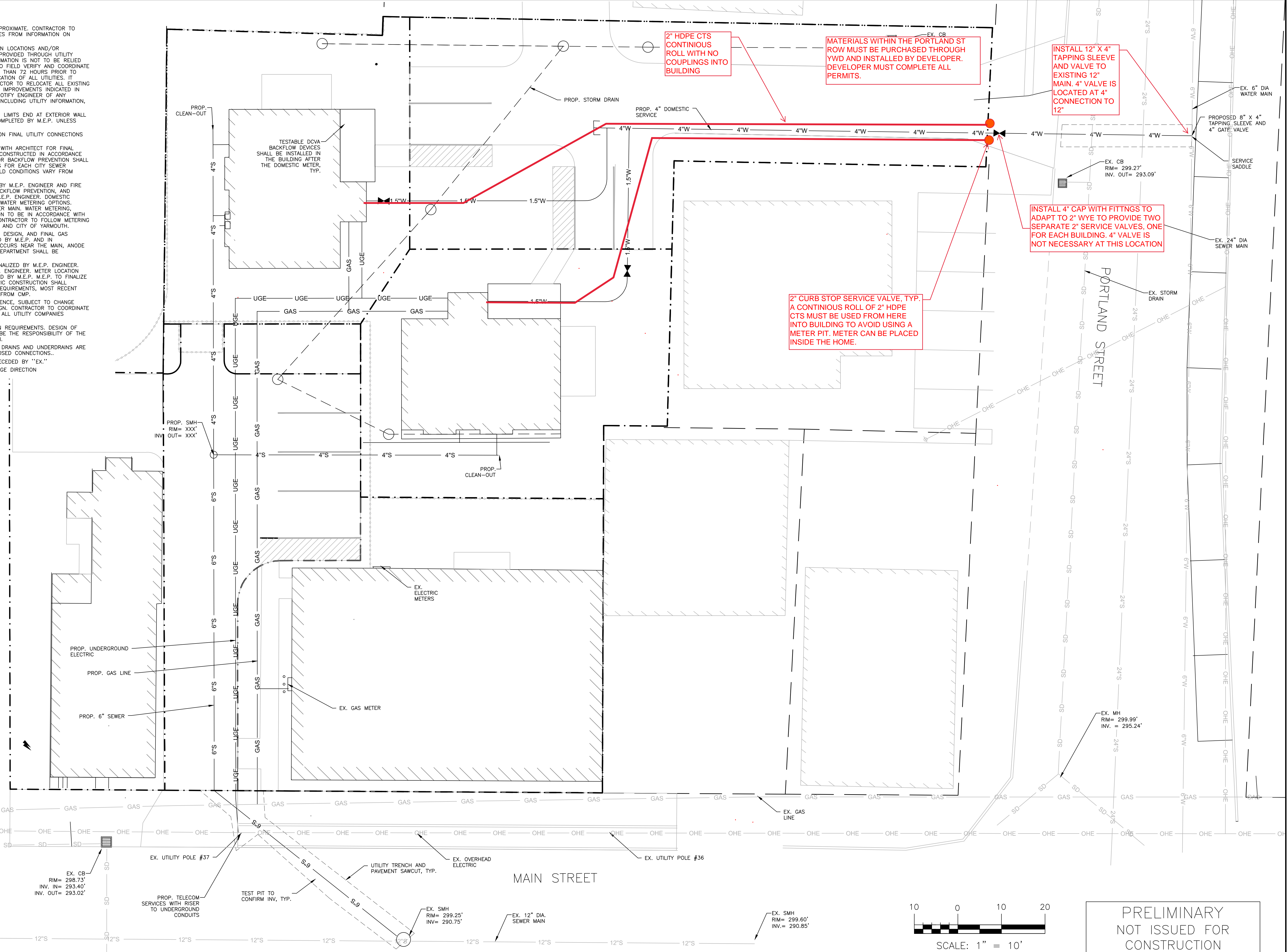


Eric Gagnon
Superintendent

Attachment: YWD Redlined Site Drawing

CC: Erin Zwirko, Town of Yarmouth
Tim Herrick, Yarmouth Water District

- GENERAL NOTES:
1. LOCATION OF PROPOSED CONNECTIONS ARE APPROXIMATE. CONTRACTOR TO CONTACT ENGINEER IF FIELD INFORMATION VARIES FROM INFORMATION ON PLANS.
 2. CONTRACTOR IS TO BE CAUTIONED THAT CERTAIN LOCATIONS AND/OR ELEVATIONS OF EXISTING UTILITIES HAVE BEEN PROVIDED THROUGH UTILITY COORDINATION OR OTHER OBSERVATIONS. INFORMATION IS NOT TO BE RELIED UPON AS EXACT OR COMPLETE. CONTRACTOR TO FIELD VERIFY AND COORDINATE WITH UTILITY COMPANY AND DIG SAFE NO LESS THAN 72 HOURS PRIOR TO ANY EXCAVATION TO REQUEST EXACT FIELD LOCATION OF ALL UTILITIES. IT SHALL BE THE RESPONSIBILITY OF THE CONTRACTOR TO RELOCATE ALL EXISTING UTILITIES WHICH CONFLICT WITH THE PROPOSED IMPROVEMENTS INDICATED IN THE CONTRACT DOCUMENTS. CONTRACTOR TO NOTIFY ENGINEER OF ANY DIFFERENTIATIONS FROM EXISTING CONDITIONS, INCLUDING UTILITY INFORMATION, PRIOR TO ANY CHANGES.
 3. FOR ALL UTILITIES, ACON ENGINEERING DESIGN LIMITS END AT EXTERIOR WALL OF BUILDING. METERING OF UTILITIES TO BE COMPLETED BY M.E.P. UNLESS SPECIFIED OTHERWISE.
 4. CONTRACTOR TO COORDINATE WITH ARCHITECT ON FINAL UTILITY CONNECTIONS WITHIN THE BUILDING.
 5. SEWER UTILITIES: CONTRACTOR TO COORDINATE WITH ARCHITECT FOR FINAL SERVICE CONNECTION. SEWER UTILITIES TO BE CONSTRUCTED IN ACCORDANCE WITH CITY OF YARMOUTH STANDARDS. VALVE FOR BACKFLOW PREVENTION SHALL BE INSTALLED WITHIN THE PROPERTY LINES FOR EACH CITY SEWER CONNECTION. CONTACT ENGINEER IF INVERT FIELD CONDITIONS VARY FROM DESIGN.
 6. WATER UTILITIES: FINAL PIPE SIZES PROVIDED BY M.E.P. ENGINEER AND FIRE PROTECTION DESIGNER. INTERNAL METERING, BACKFLOW PREVENTION, AND PRESSURE REDUCERS TO BE COMPLETED BY M.E.P. ENGINEER. DOMESTIC WATER PIPE SIZES WILL DETERMINE THE FINAL WATER METERING OPTIONS. METER MAY BE SMALLER THAN PROPOSED WATER MAIN. WATER METERING, PRESSURE REDUCER AND BACKFLOW PREVENTION TO BE IN ACCORDANCE WITH THE YARMOUTH WATER DISTRICT STANDARDS. CONTRACTOR TO FOLLOW METERING GUIDELINES OF THE YARMOUTH WATER DISTRICT AND CITY OF YARMOUTH.
 7. GAS UTILITIES: PROJECT GAS LOAD, GAS UTILITY DESIGN, AND FINAL GAS SERVICE LOCATION AND METERS TO BE DEFINED BY M.E.P. AND IN ACCORDANCE WITH UNTIL. WHEN EXCAVATION OCCURS NEAR THE MAIN, ANODE BED, OR RECTIFIER, UNTIL DAMAGE CONTROL DEPARTMENT SHALL BE COORDINATED WITH.
 8. ELECTRIC UTILITIES: ELECTRIC DESIGN TO BE FINALIZED BY M.E.P. ENGINEER. ELECTRICAL LOAD TO BE DETERMINED BY M.E.P. ENGINEER. METER LOCATION AND TRANSFORMER SIZE, IF NECESSARY DEFINED BY M.E.P. M.E.P. TO FINALIZE SERVICE CONNECTION TO BUILDING. ALL ELECTRIC CONSTRUCTION SHALL CONFORM TO CMP GUIDEBOOK OF STANDARD REQUIREMENTS, MOST RECENT EDITION. DESIGN SUBJECT TO FINAL APPROVAL FROM CMP.
 9. SECONDARY CONDUIT RUNS SHOWN FOR REFERENCE. SUBJECT TO CHANGE BASED UPON FIELD CONDITIONS AND MEP DESIGN. CONTRACTOR TO COORDINATE INSTALLATION OF UNDERGROUND UTILITIES WITH ALL UTILITY COMPANIES INVOLVED.
 10. REFER TO STRUCTURAL PLANS FOR FOUNDATION REQUIREMENTS. DESIGN OF TEMPORARY SOIL RESTRAINT MEASURES SHALL BE THE RESPONSIBILITY OF THE CONTRACTOR IF NECESSARY FOR CONSTRUCTION.
 11. CONTRACTOR SHALL ENSURE THAT FOUNDATION DRAINS AND UNDERDRAINS ARE CONSTRUCTED WITH POSITIVE OUTLET TO PROPOSED CONNECTIONS.
 12. ALL SPOT GRADES ARE PROPOSED UNLESS PRECEDED BY "EX."
 13. REFER TO FLOWLINES FOR STORMWATER DRAINAGE DIRECTION



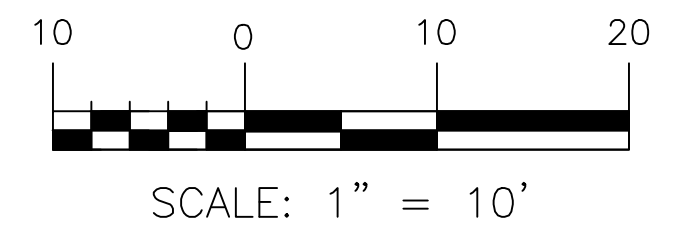
2" HDPE CTS CONTINUOUS ROLL WITH NO COUPLINGS INTO BUILDING

MATERIALS WITHIN THE PORTLAND ST ROW MUST BE PURCHASED THROUGH YVWD AND INSTALLED BY DEVELOPER. DEVELOPER MUST COMPLETE ALL PERMITS.

INSTALL 12" X 4" TAPPING SLEEVE AND VALVE TO EXISTING 12" MAIN. 4" VALVE IS LOCATED AT 4" CONNECTION TO 12"

INSTALL 4" CAP WITH FITTINGS TO ADAPT TO 2" WYE TO PROVIDE TWO SEPARATE 2" SERVICE VALVES, ONE FOR EACH BUILDING. 4" VALVE IS NOT NECESSARY AT THIS LOCATION

2" CURB STOP SERVICE VALVE, TYP. A CONTINUOUS ROLL OF 2" HDPE CTS MUST BE USED FROM HERE INTO BUILDING TO AVOID USING A METER PIT. METER CAN BE PLACED INSIDE THE HOME.



PRELIMINARY
NOT ISSUED FOR
CONSTRUCTION

ISSUED FOR	BY
SITE PLAN REVIEW	DATE
	02/22/20
DRAWING NO. C-20	
PROJECT NAME: UTILITY & GRADING PLAN	
CLIENT: 90 MAIN STREET YARMOUTH	
STREET ADDRESS: PLATZ	
ENGINEERING, INC. ACORN	
<small>THIS PLAN SHALL NOT BE MODIFIED WITHOUT WRITTEN PERMISSION FROM ACORN ENGINEERING, INC. ANY ALTERATIONS AUTHORIZED WITHOUT LIABILITY TO ACORN ENGINEERING, INC.</small>	
FILE:	1178_CIVIL
JN:	1178
SCALE:	AS NOTED
DESIGNED BY:	XXX
DRAWN BY:	XXX
CHECKED BY:	WHS