

Yarmouth Climate Action Plan Process and Outcomes

GPCOG Climate Action Plan Process

Timeline: ~12 months

Preparation and Data Collection

Create advisory committee or team

Plan community engagement

Identify data sources and conduct data collection

GHG Emissions Inventory

Inventory tool modeling

Set emissions reduction targets

Draft GHG Emissions Report

Vulnerability Assessment

Municipal department survey and interviews

Vulnerability assessment workshop

Draft Vulnerability Assessment Report

Public Comment

Climate Action Planning

Hold Priority-Setting workshop

Draft climate action report

Town Council Review; Public Comment

Town Council Report Acceptance

Implementation and Tracking Progress

Implement plan and establish tracking approach

Track and report on progress annually

PROCESS OVERVIEW



- 1 Emissions Inventory
- 2 Vulnerability Assessment
- 3 Climate Actions
- 4 Final Climate Action Plan
- * Community Engagement

Emissions Inventory

Example

Purpose:

Catalog emissions from municipal and community sources and use data to guide emissions reduction targets

How:

GPCOG uses online software (ClearPath) to model emissions based on town and utility provided data

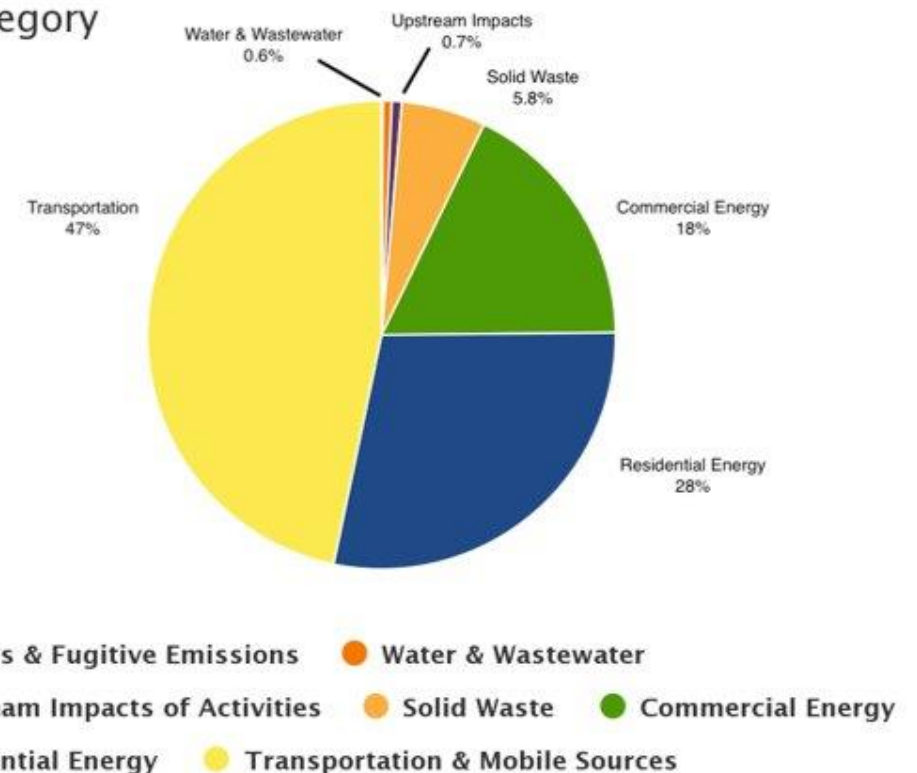
Timeline:

3 to 4 months

Outcome:

GHG Inventory report identifying key sources, emissions, and future emissions pathways

CO₂e By Category



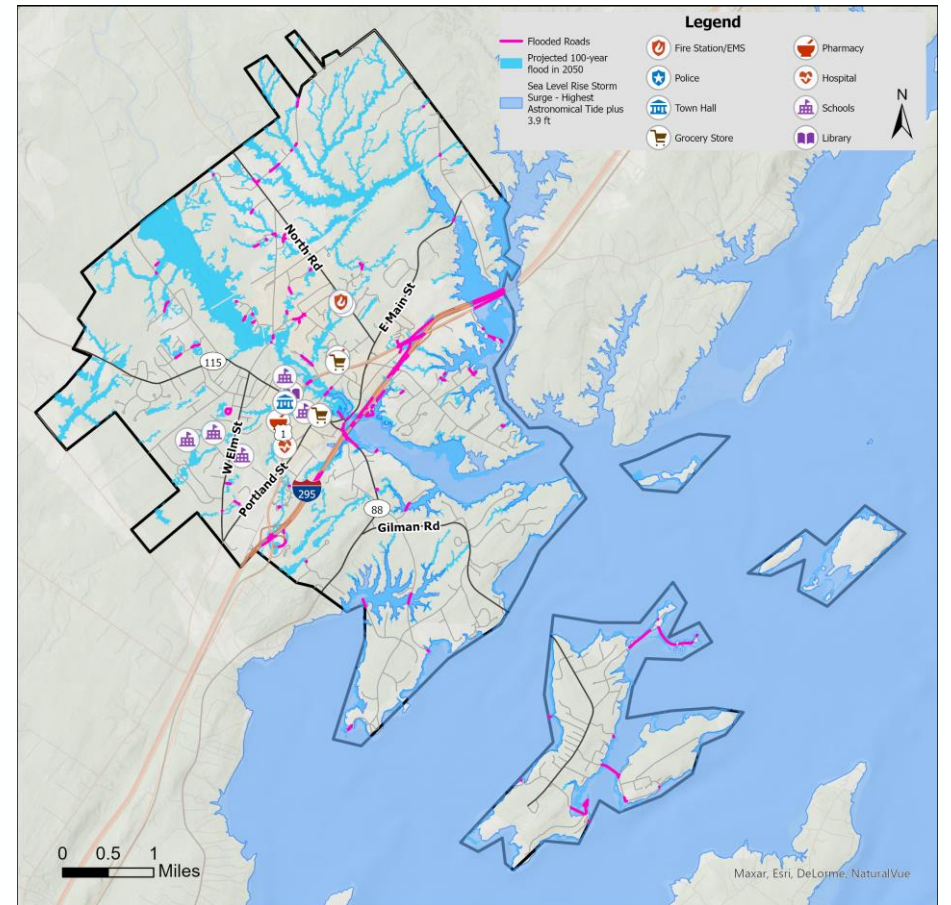
Vulnerability Assessment

Purpose: Provide high level overview of climate hazards facing the region and the impacts that Yarmouth can expect to guide prioritization of adaptation actions

How: Using community input, interviews with town staff, and data analysis (ex. U.S. Census, FloodFactor, State of Maine, etc.) to develop report on town-specific vulnerabilities

Timeline: 6 to 7 months

Outcome: Vulnerability assessment identifying key geographic areas, infrastructure, ecosystems, and populations in Yarmouth at most risk



Climate Action

Purpose: Develop clear, actionable priority areas and suggested actions the town can implement in the short, medium, and long-term to mitigate emissions and adapt to climate change

How: Community input, discussions with staff, best practices

Timeline: 12 months

Example actions



Conserve energy usage in buildings

- Recommend incentives or regulations to incorporate projected flood and heat risk into design of new construction
- Adopt more efficient green building or energy codes
- Adopt an energy benchmarking program to track electricity usage in commercial buildings

Community Engagement

Community Engagement will occur throughout the entire process

Draft Community Engagement Plan to:

- Ensure equitable and inclusive involvement
- Identify key stakeholders
- Develop tools and strategies for outreach and communication
- Identify a series of engagement events and workshops

Key Process Workshops:

- Vulnerability Workshop
- Climate Action Priority Setting Workshop

Responsibilities

GPCOG

- Project management
- Draft data collection requests
- Data input and analysis
- Report drafting
- Guide community engagement

Yarmouth

- Lead outreach
- Plan engagement events
- Provide data input
- Review and edit reports
- Manage committee and council feedback
- Guide prioritization of actions
- Implement and track plan

Committee Role

- Ensure community engagement and plan for events
 - Identify vulnerable populations and develop strategies to encourage participation
 - Collaborate with stakeholders to hold outreach events
- Provide input and review on all reports
 - Review emission reduction inventory and choose an emission reduction target to recommend to council
- Recommend prioritization of actions for the climate action plan

Next Steps Fall 2022

GPCOG:

- Provide emissions inventory data plan to municipality
- Begin drafting community engagement plan
- Vulnerability data collection commences

Town/Committee

- Begin brainstorming key stakeholders for involvement
- Consider potential community outreach activities (ex. Lecture series, tabling at events, survey, website, etc.)
- Notify department heads of climate action plan and potential involvement