



Lori Driscoll, P.E.
Project Manager, HNTB

Mackenzie Kersbergen, P.E
Senior Project Manager MaineDOT
Multimodal - MaineDOT

Work Identification Number (WIN):
025985.00

YARMOUTH, BETH CONDON TRAIL/ SHARED USE PATH I-295 EXIT 17 TO COUSINS RIVER BRIDGE

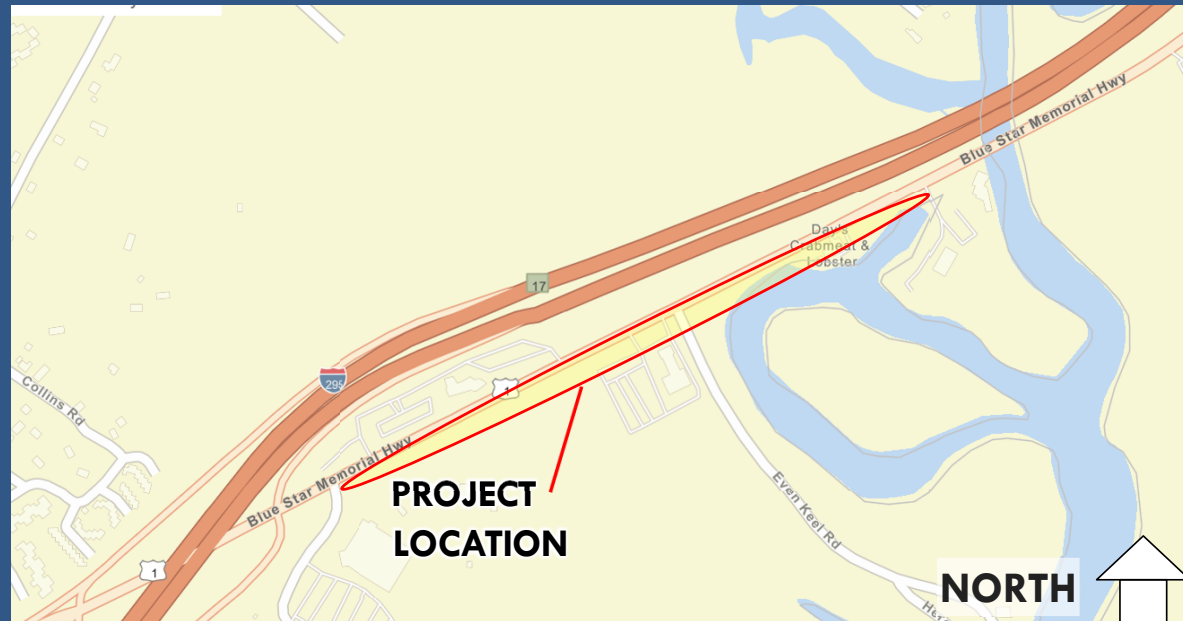
AGENDA

- Project Location
- Project Limits
- Preliminary Design
- Questions/Comments

PROJECT LOCATION

Yarmouth, Maine

Intersection of Delorme Drive to
Cousins River Bridge Project



PROJECT LIMITS

Shared Use Path

- Begin just north of Delorme Drive
- Path on NB side of U.S. Route 1
- Right turn slip lane on Delorme Drive to be removed by Garmin



PROJECT LIMITS

Shared Use Path

- End just north of Days Crabmeat and Lobster
- Match Cousins River Bridge Replacement Project

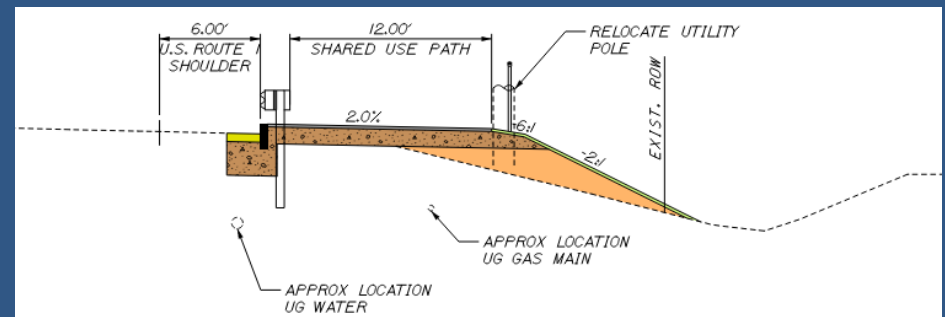


PRELIMINARY DESIGN – south end

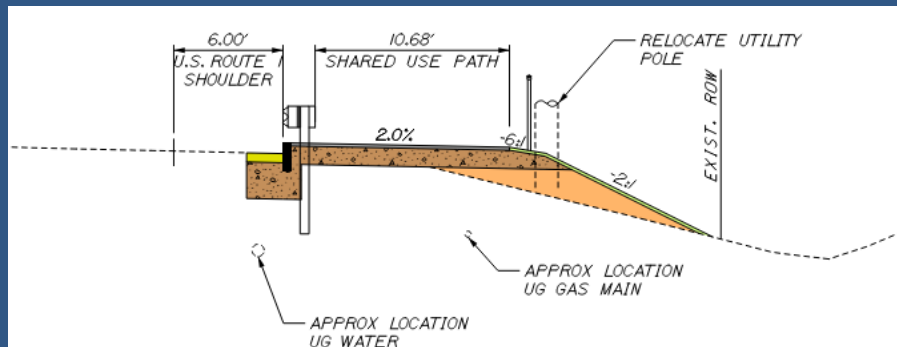
Balancing Constraints

- Right of Way
- Utilities
- Environmental Impacts
- Geotechnical

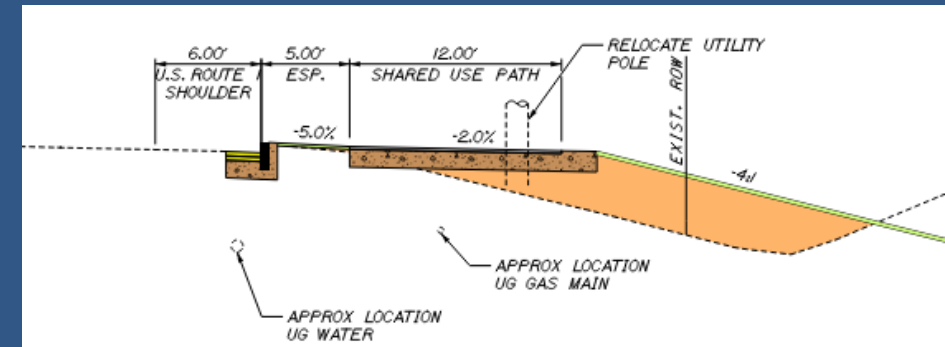
No Esplanade



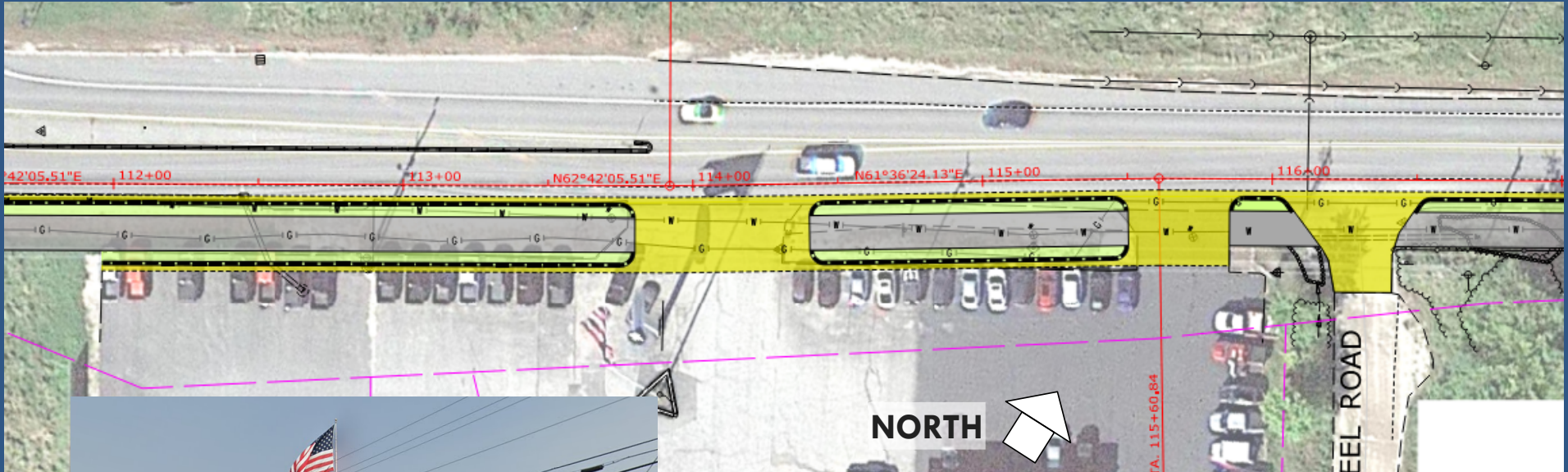
Narrower Path



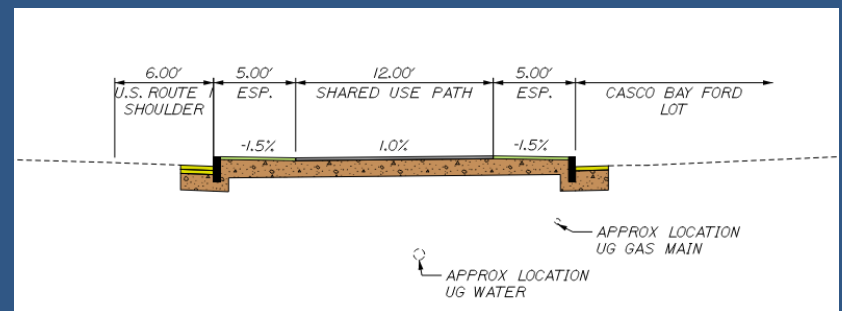
5' Esplanade



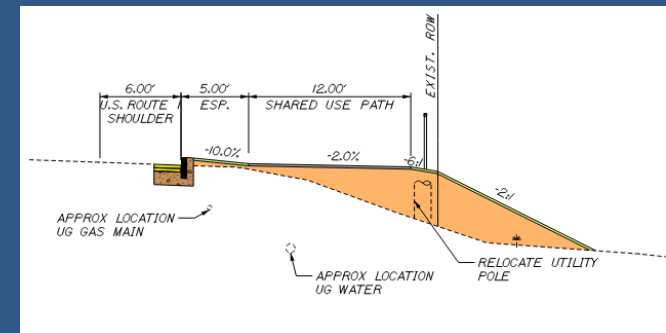
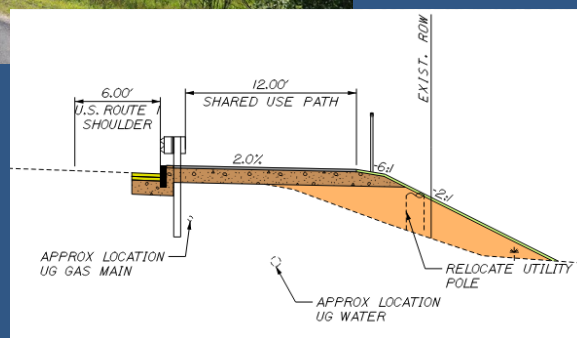
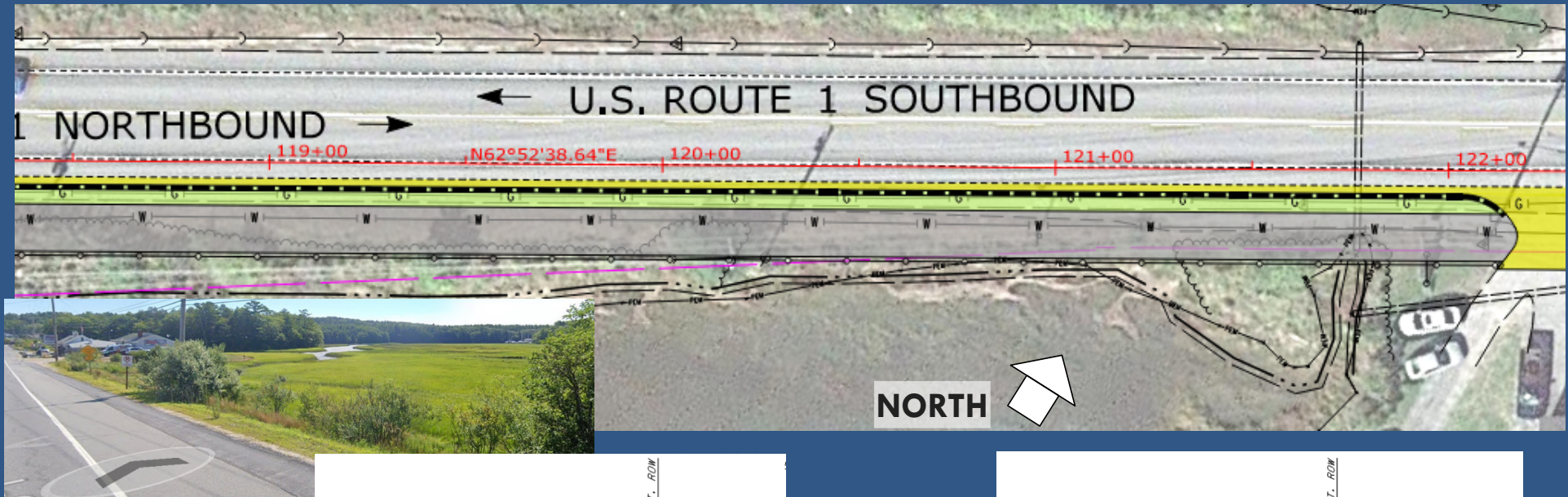
PRELIMINARY DESIGN – CASCO BAY FORD



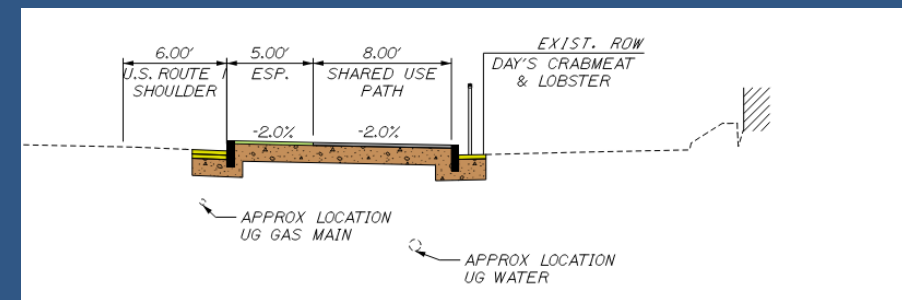
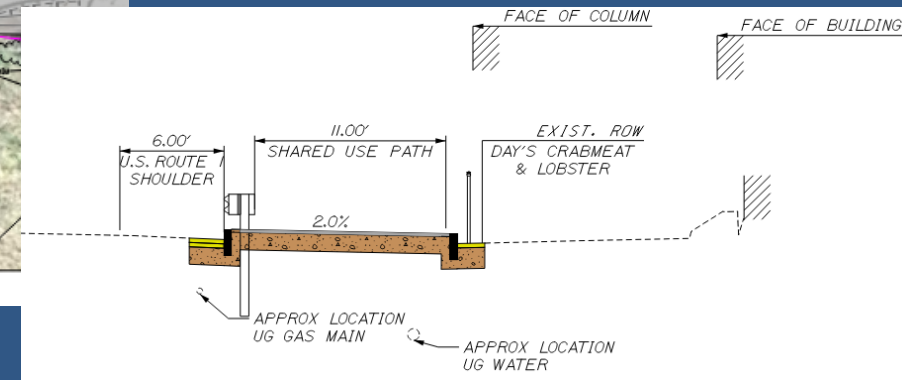
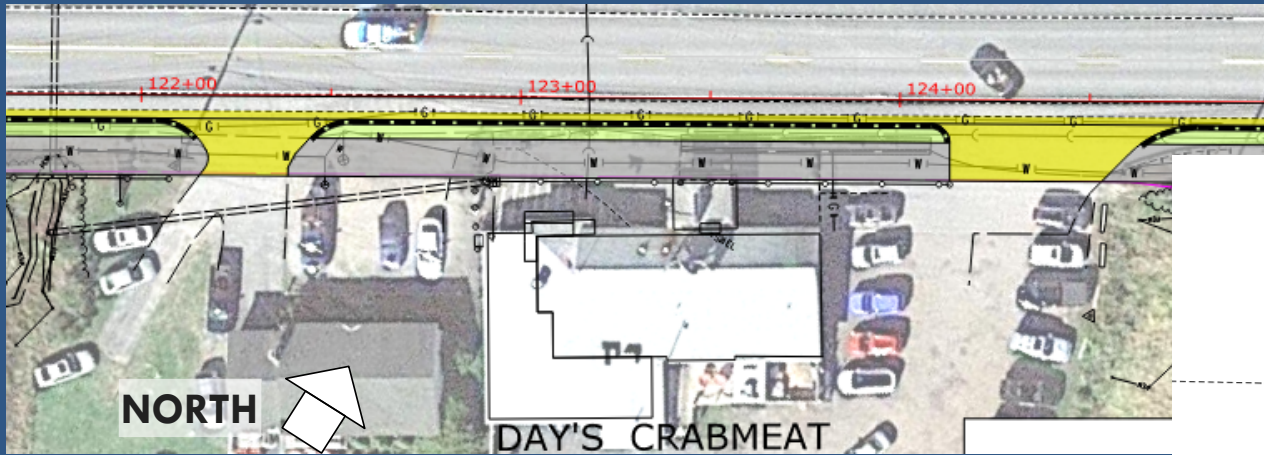
NORTH



PRELIMINARY DESIGN – Marsh Area



PRELIMINARY DESIGN – DAYS CRABMEAT & LOBSTER



QUESTIONS ??

COMMENTS....