

WILLIAMSVILLE CENTRAL  
SCHOOL DISTRICT  
ENROLLMENT PROJECTIONS REPORT  
2017-2018

November 14, 2017

The  
R/E/D Group  
Research,  
Evaluation  
and  
Development

Penfield and  
Syracuse,  
New York

WILLIAMSVILLE CENTRAL SCHOOL DISTRICT  
ENROLLMENT PROJECTIONS REPORT  
2017-2018

**Considerations:**

- > **Changes in Kindergarten class size**
- > **The current enrollments**
- > **In or out-migration**
- > **The number in private or parochial schools**
- > **The number in home schooling**
- > **The number in out-of-district programs**
- > **The number of incarcerated students**
- > **The number in charter schools**
- > **High school leavers**
- > **The economy**

WILLIAMSVILLE CENTRAL SCHOOL DISTRICT  
ENROLLMENT PROJECTIONS REPORT  
2017-2018

**Key Change Variables:**

- > **Changes in Kindergarten Class size**
- > **The current enrollments**
- > **In or out-migration**
- > **Economy**

**WILLIAMSVILLE CENTRAL SCHOOL DISTRICT  
ENROLLMENT PROJECTIONS REPORT  
2017-2018**

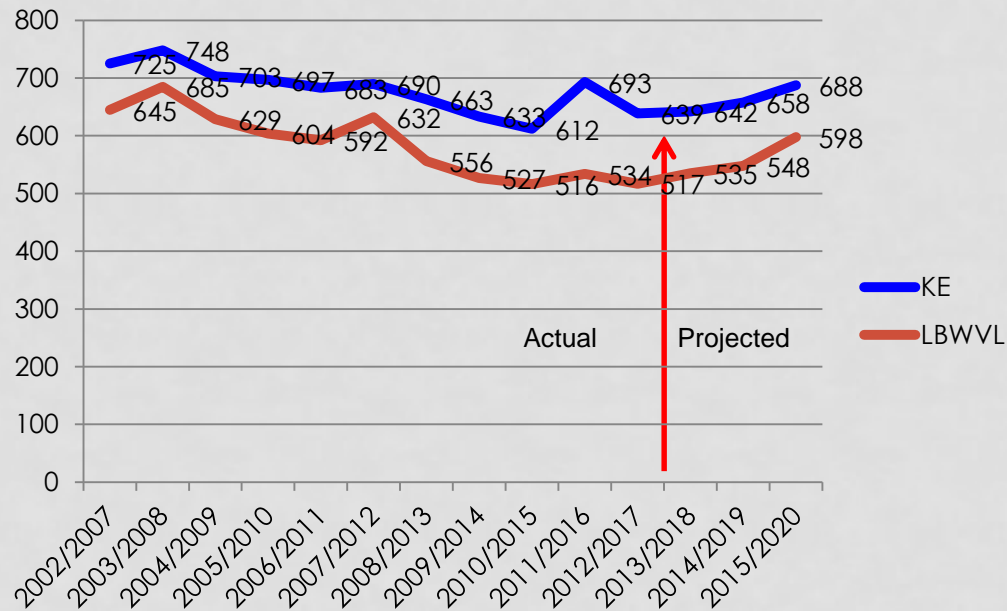
**Enrollments – Past, Present, and Future:**

- 1. Kindergarten through Grade 12**
- 2. Elementary Schools**
- 3. Middle Schools**
- 4. High Schools**
- 5. Conclusions**

# WILLIAMSVILLE CENTRAL SCHOOL DISTRICT ENROLLMENT PROJECTIONS REPORT 2017-2018

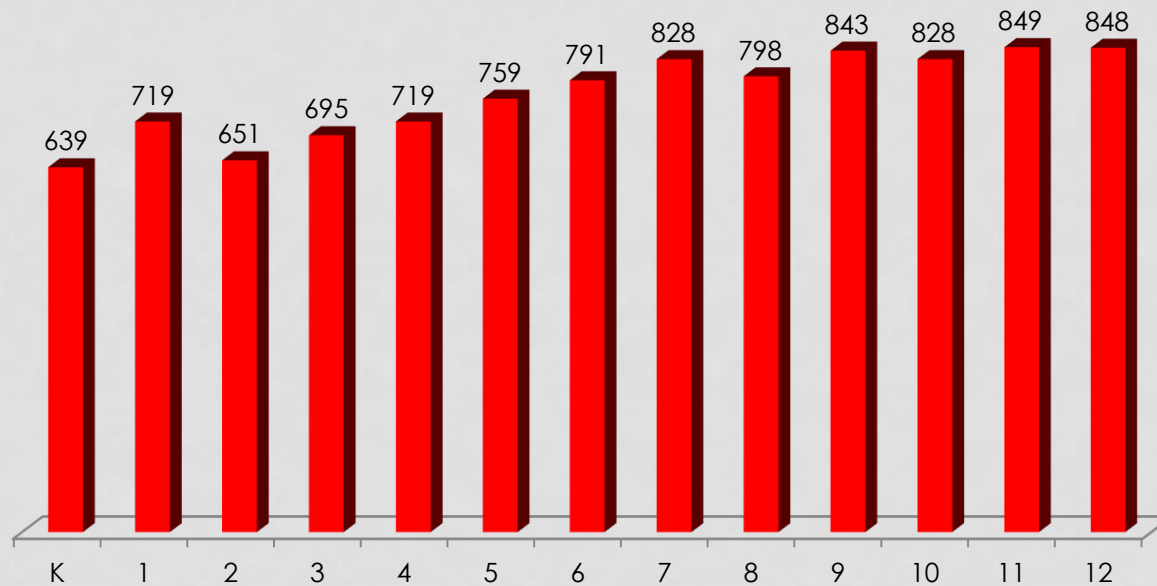
## Live Births in District (LB)

### Compared to Kindergarten (KE) Five Years Later



WILLIAMSVILLE CENTRAL SCHOOL DISTRICT  
ENROLLMENT PROJECTIONS REPORT  
2017-2018

**2017-2018 Enrollment by Grade Level**



WILLIAMSVILLE CENTRAL SCHOOL DISTRICT  
ENROLLMENT PROJECTIONS REPORT  
2017-2018

Open Enrollments: Impact as of 2017-2018

School	Transfers in
Dodge Elementary	5
Forest Elementary	9
Casey Middle	20
Heim Middle	11
East High	60
North High	29
South High	42

WILLIAMSVILLE CENTRAL SCHOOL DISTRICT  
ENROLLMENT PROJECTIONS REPORT  
2017-2018

**Assumptions :**

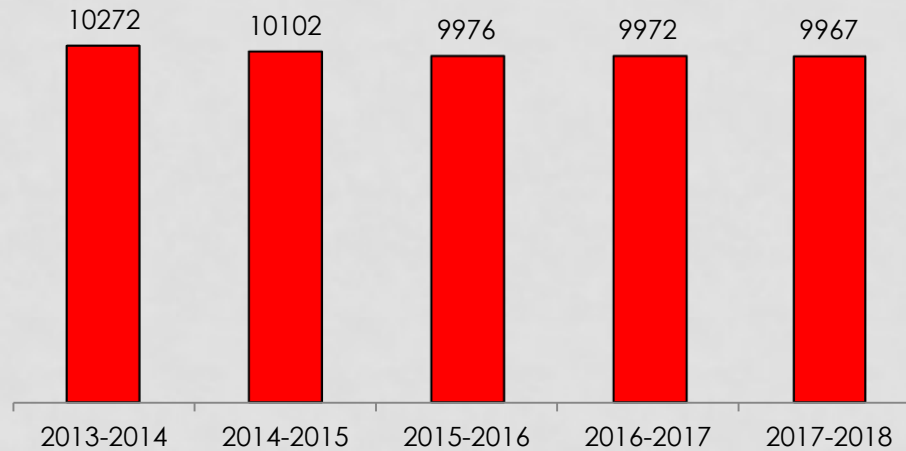
- > Kindergartens will be smaller than 12<sup>th</sup> grades**
- > In-migration will offset some attrition**
- > The Economy will continue its recovery**
- > Other factors will stay stable for the study period**



WILLIAMSVILLE CENTRAL SCHOOL DISTRICT  
ENROLLMENT PROJECTIONS REPORT  
2017-2018

**Five Year History 2013-14 to 2017-18**

Grades K to 12

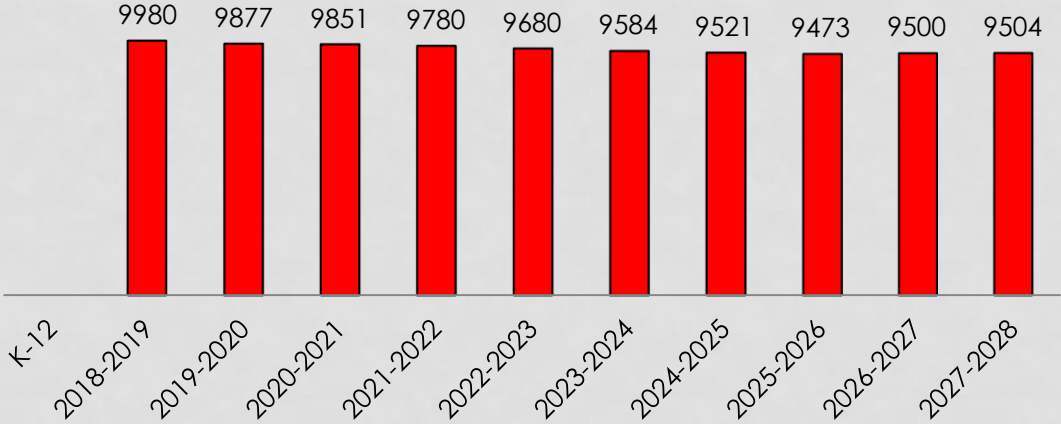


**-305**

WILLIAMSVILLE CENTRAL SCHOOL DISTRICT  
ENROLLMENT PROJECTIONS REPORT  
2017-2018

**Enrollments Projected from 2018-19 to 2027-28**

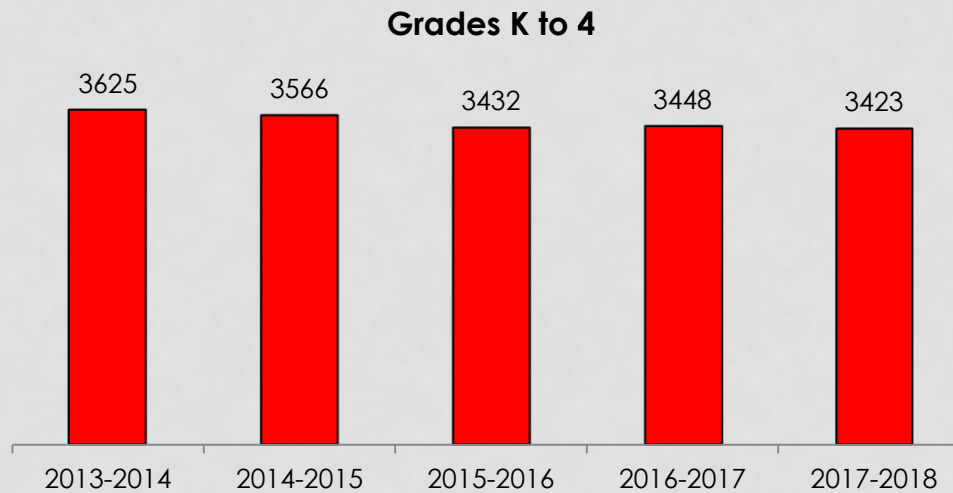
**K-12 Totals**



**-476**

WILLIAMSVILLE CENTRAL SCHOOL DISTRICT  
ENROLLMENT PROJECTIONS REPORT  
2017-2018

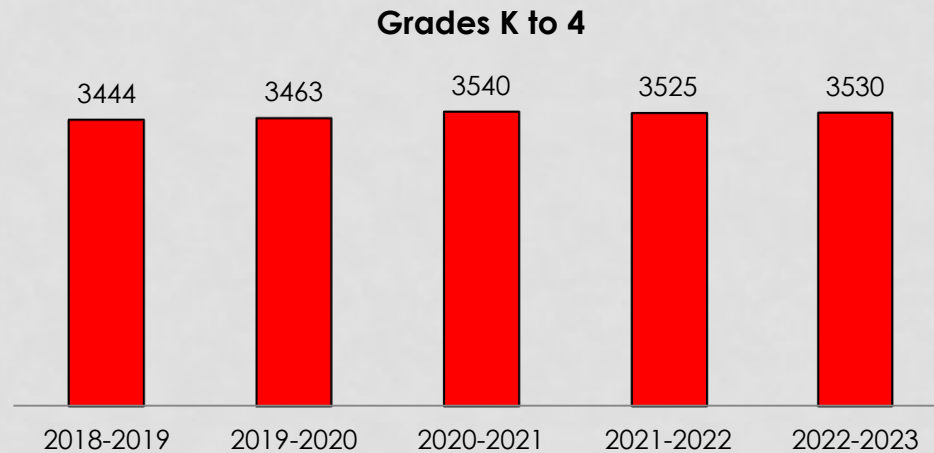
**Elementary School Five Year History**



**-202**

WILLIAMSVILLE CENTRAL SCHOOL DISTRICT  
ENROLLMENT PROJECTIONS REPORT  
2017-2018

**Elementary School Five Year Projections**



**+86**

WILLIAMSVILLE CENTRAL SCHOOL DISTRICT  
ENROLLMENT PROJECTIONS REPORT  
2017-2018

<b>Country Parkway</b>	
<i>2017-2018</i>	520
	<b>Projections</b>
2018-2019	512
2019-2020	549
2020-2021	567
2021-2022	581
2022-2023	600
	+88

WILLIAMSVILLE CENTRAL SCHOOL DISTRICT  
 ENROLLMENT PROJECTIONS REPORT  
 2017-2018

Dodge	
2017-2018	503
	Projections
2018-2019	535
2019-2020	548
2020-2021	555
2021-2022	562
2022-2023	557
	+22

WILLIAMSVILLE CENTRAL SCHOOL DISTRICT  
ENROLLMENT PROJECTIONS REPORT  
2017-2018

<b>Forest</b>	
<i>2017-2018</i>	561
	<b>Projections</b>
2018-2019	546
2019-2020	547
2020-2021	561
2021-2022	561
2022-2023	569
	+23

WILLIAMSVILLE CENTRAL SCHOOL DISTRICT  
ENROLLMENT PROJECTIONS REPORT  
2017-2018

<b>Heim</b>	
2017-2018	604
	<b>Projections</b>
2018-2019	580
2019-2020	593
2020-2021	605
2021-2022	605
2022-2023	622
	+42



WILLIAMSVILLE CENTRAL SCHOOL DISTRICT  
ENROLLMENT PROJECTIONS REPORT  
2017-2018

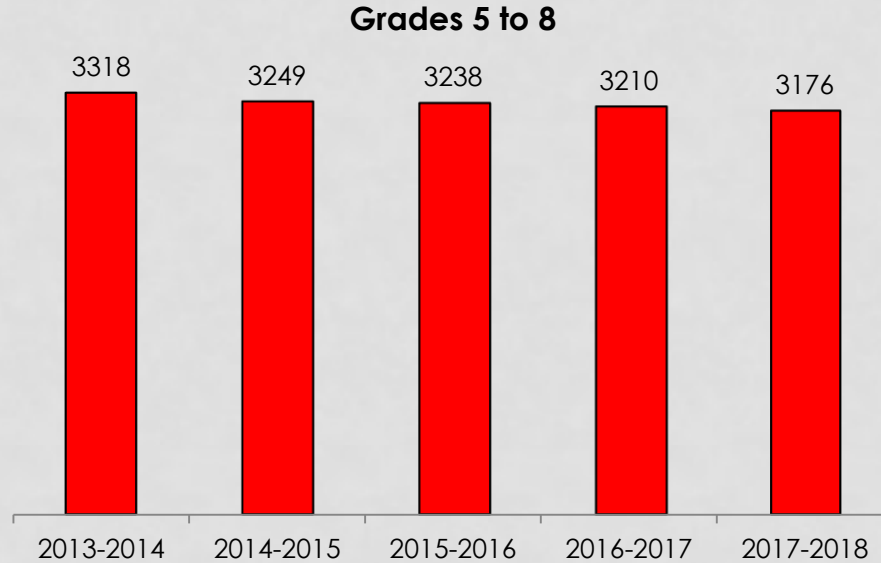
<b>Maple East</b>	
<i>2017-2018</i>	<i>610</i>
	<b>Projections</b>
2018-2019	636
2019-2020	623
2020-2021	633
2021-2022	630
2022-2023	603
	-33

WILLIAMSVILLE CENTRAL SCHOOL DISTRICT  
 ENROLLMENT PROJECTIONS REPORT  
 2017-2018

Maple West	
2017-2018	625
	Projections
2018-2019	635
2019-2020	603
2020-2021	619
2021-2022	586
2022-2023	579
	-56

WILLIAMSVILLE CENTRAL SCHOOL DISTRICT  
ENROLLMENT PROJECTIONS REPORT  
2017-2018

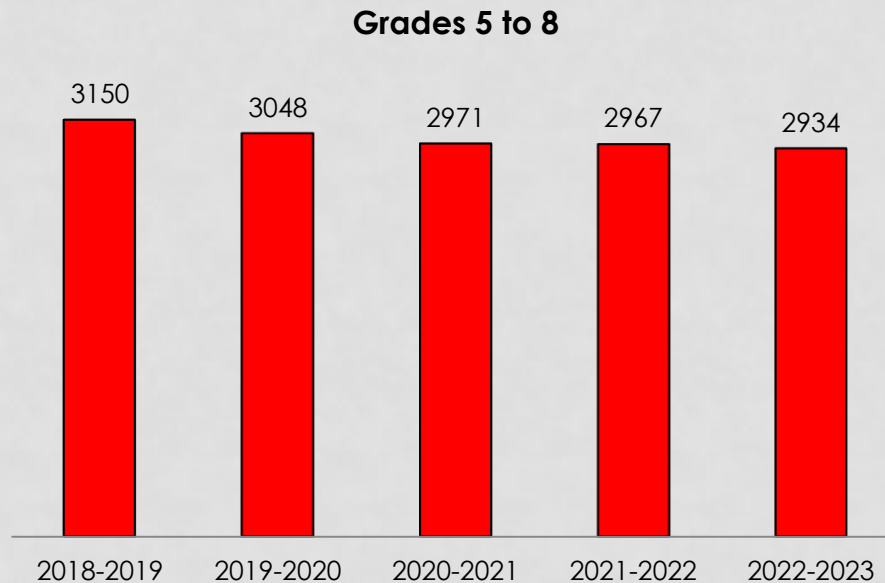
## Middle School Five Year History



**-142**

WILLIAMSVILLE CENTRAL SCHOOL DISTRICT  
ENROLLMENT PROJECTIONS REPORT  
2017-2018

## Middle School Five Year Projection



**-216**

WILLIAMSVILLE CENTRAL SCHOOL DISTRICT  
ENROLLMENT PROJECTIONS REPORT  
2017-2018

<b>Casey</b>	
2017-2018	675
	<b>Projections</b>
2018-2019	637
2019-2020	628
2020-2021	629
2021-2022	642
2022-2023	671
	+34

WILLIAMSVILLE CENTRAL SCHOOL DISTRICT  
ENROLLMENT PROJECTIONS REPORT  
2017-2018

<b>Heim</b>	
2017-2018	674
	<b>Projections</b>
2018-2019	681
2019-2020	648
2020-2021	615
2021-2022	597
2022-2023	569
	-112

WILLIAMSVILLE CENTRAL SCHOOL DISTRICT  
ENROLLMENT PROJECTIONS REPORT  
2017-2018

Mill	
2017-2018	841
	Projections
2018-2019	849
2019-2020	837
2020-2021	828
2021-2022	845
2022-2023	819
	-30

WILLIAMSVILLE CENTRAL SCHOOL DISTRICT  
 ENROLLMENT PROJECTIONS REPORT  
 2017-2018

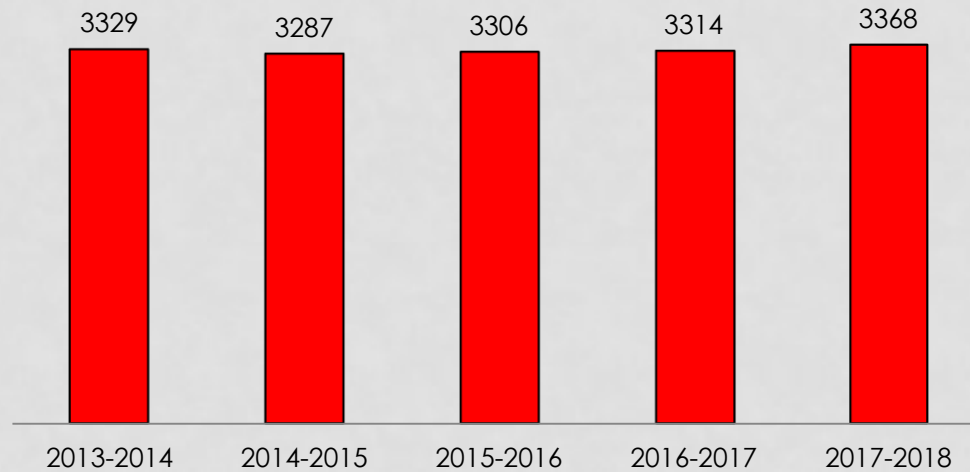
Transit	
2017-2018	986
	Projections
2018-2019	982
2019-2020	935
2020-2021	899
2021-2022	882
2022-2023	875
	-107



WILLIAMSVILLE CENTRAL SCHOOL DISTRICT  
ENROLLMENT PROJECTIONS REPORT  
2017-2018

## High School Five Year History

### Grades 9 to 12

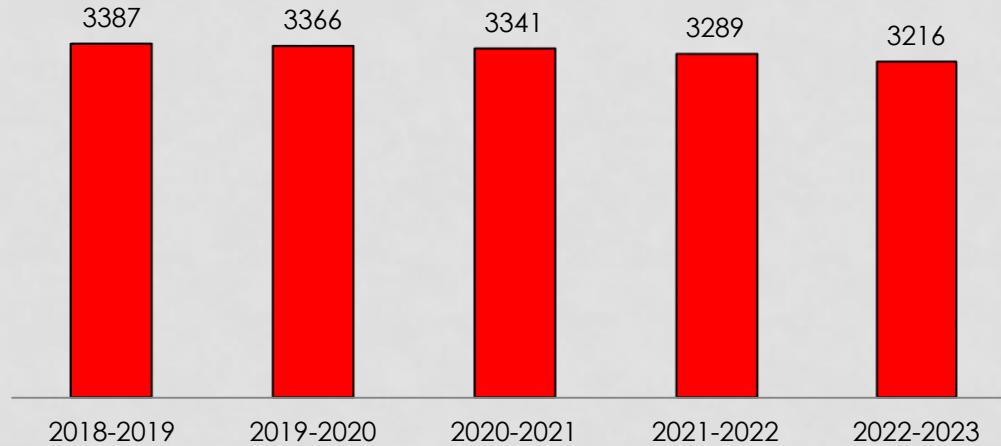


+39

WILLIAMSVILLE CENTRAL SCHOOL DISTRICT  
ENROLLMENT PROJECTIONS REPORT  
2017-2018

## High School Five Year Projections

Grades 9 to 12



**-171**

WILLIAMSVILLE CENTRAL SCHOOL DISTRICT  
ENROLLMENT PROJECTIONS REPORT  
2017-2018

<b>East</b>	
<i>2017-2018</i>	<i>1009</i>
	<b>Projections</b>
2018-2019	1011
2019-2020	1004
2020-2021	1009
2021-2022	1005
2022-2023	994
	-17

WILLIAMSVILLE CENTRAL SCHOOL DISTRICT  
ENROLLMENT PROJECTIONS REPORT  
2017-2018

<b>North</b>	
<i>2017-2018</i>	1384
	<b>Projections</b>
2018-2019	1426
2019-2020	1449
2020-2021	1449
2021-2022	1434
2022-2023	1381

WILLIAMSVILLE CENTRAL SCHOOL DISTRICT  
 ENROLLMENT PROJECTIONS REPORT  
 2017-2018

South	
2017-2018	975
	Projections
2018-2019	950
2019-2020	912
2020-2021	883
2021-2022	850
2022-2023	841
	-109

Williamsville Central School District  
Enrollment Projections Report  
2017-2018

## Conclusions

For the next five years:

- The slow decrease in K-12 enrollments will continue with a “leveling out” in the elementary grades.
- No changes in attendance areas or feeder patterns will be necessary.
- No major changes in facilities will be necessary.
- No changes in open enrollments are recommended.

Williamsville Central School District Enrollment  
Projections Report  
2016-2017

**THANK YOU!**

*Steven Grossman EdD*

The R/E/D Group  
Penfield and Syracuse, NY