



DEMOLITION DERBY

Vehicle Registration Form

Entry Fee \$50 / AGES 18+ ONLY / Please use a separate form for each vehicle registered. If driver enters two or more vehicles, entry fee will be free. Entry is limited to 24 vehicles, so register early. Entries will be accepted on the day of the race but only if space is available. Check in time: 8:00 – 10:00AM. Time Trials at 11:00AM. Derby start time is 12:00PM in the Rodeo Arena. Driver and Pit Crew must arrive no later than 10:00AM.

NEW PROCESS!!! Drivers (and pit crew) with their vehicles in tow, may **ONLY** enter through GATE #2 (see map on page 2). That's where you'll get your fair pass(es)/wristband(s) and sign a waiver. Must enter between 8AM and 10AM.

PLEASE PRINT

Applicant's Name: _____

Address: _____

City: _____

ZIP Code: _____

E-mail: _____

Phone: _____

Car Owner's Name: _____

Driver's Name: _____

Crew Member 1: _____

Crew Member 2: _____

Crew Member 3: _____

Vehicle Number Requested 1st Choice: _____

2nd Choice: _____

Numbers are issued on a First-Come basis. Should you have no preference, a number will be assigned.

Make of Vehicle: _____

Model: _____

Year: _____

SPONSOR(S)

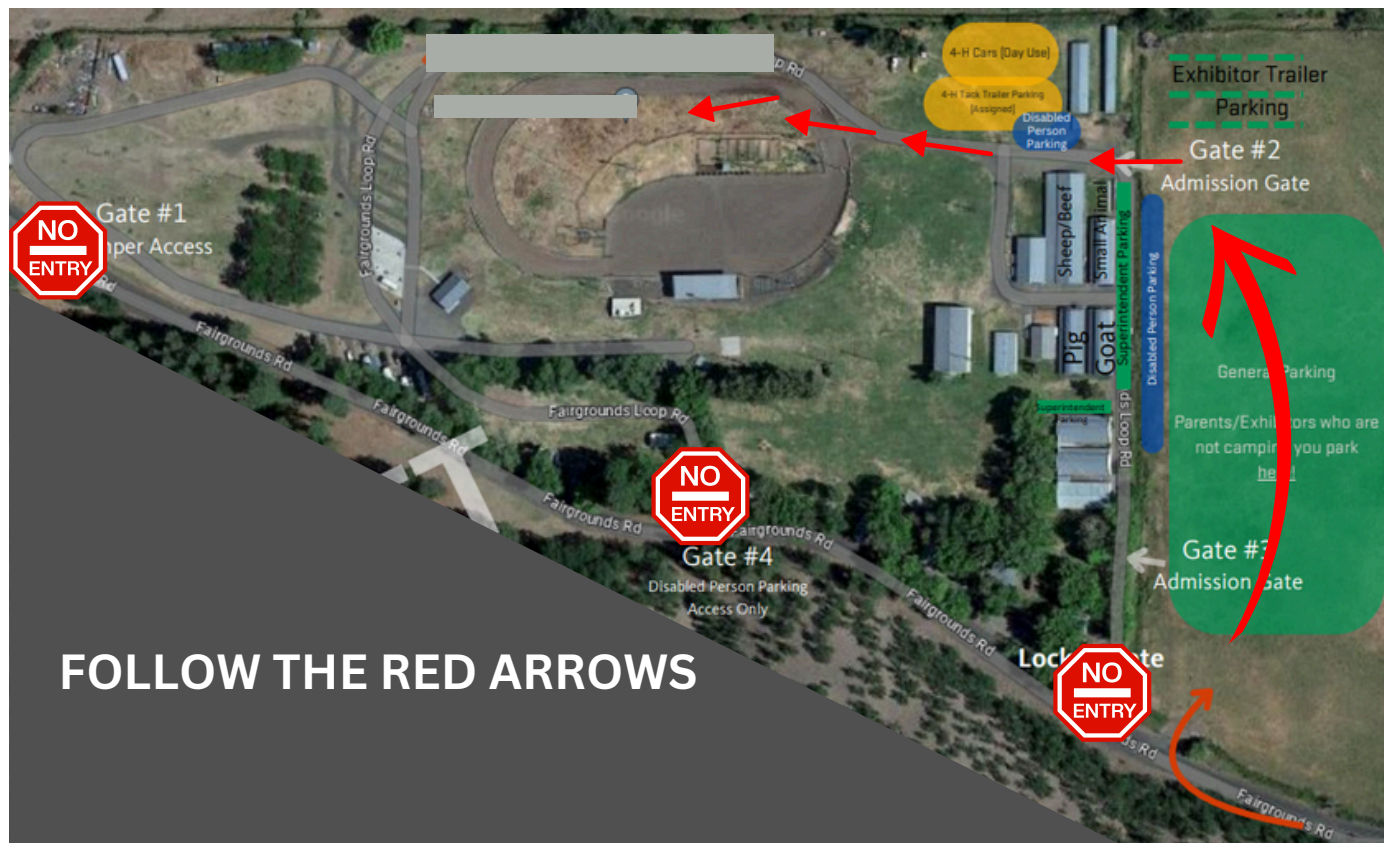
Mail this completed registration form along with \$50 (check or money order) for one (1) vehicle. If registering two or more vehicles, fee is waived. Use separate forms for additional vehicles. Mail reg form and payment to: WASCO COUNTY FAIR, 511 Washington St., Ste. 207, The Dalles, OR 97058. After we receive your form and payment, you will receive a registration confirmation (with your derby vehicle number) via email. If no email, we will text you or call you.

Questions to : Leslie / 503-421-7607 / Leslie.Douglass@yahoo.com

FOR OFFICE USE ONLY: _____

NEW PROCESS!!! Drivers (and pit crew) with their vehicles in tow, may **ONLY** enter through **GATE #2** (see below). That's where you'll get your fair pass(es), wristband(s) and sign a waiver. Must enter between 8AM and 10AM. Event staff will be present to check you in.

DAY OF EVENT ISSUES? CALL LESLIE 503-421-7607



WASCO COUNTY FAIR & RODEO DEMOLITION DERBY RULES AND REGULATIONS FOR COMPACTS (REVISED 2024)

PARTICIPATION AND REGULATIONS

- A. EACH DRIVER MUST FILL OUT AN ENTRY FORM AND SIGN WAIVER FORM. COST IS \$50 PER VEHICLE. NO FEE IF YOU ENTER 2 OR MORE VEHICLES. COST OF ENTRY INCLUDES FAIR PASSES FOR 1 DRIVER AND 3 PIT CREW MEMBERS. (MAX 3 PIT CREW MEMBERS). **AGES 18+ ONLY!**
- B. ALL RULES AND REGULATIONS MUST BE OBSERVED AND FOLLOWED. TRACK OPERATORS AND PROMOTORS RESERVE THE RIGHT TO APPROVE OR REJECT ANY AND ALL ENTRIES.
- C. ONLY DRIVERS WILL BE PERMITTED IN THE PIT AREA OR ON THE TRACK.
- D. NO TRUCKS PERMITTED ON THE TRACK BEFORE THE HEAT THEY ARE TO PARTICIPATE IN.
- E. NO ALCOHOLIC BEVERAGES ALLOWED. DRIVERS AND PIT CREW MEMBERS THAT ARE OR HAVE BEEN DRINKING WILL BE DISQUALIFIED.
- F. ALL DRIVERS AND PIT CREW MEMBERS MUST BE PRESENT ONE HOUR BEFORE SCHEDULED START TIME.
- G. SAFETY BELTS, GOOGLES/SAFETY GLASSES AND HELMETS ARE REQUIRED.
- H. ALL DRIVERS MUST WEAR LONG SLEEVED SHIRTS, LONG PANTS, AND CLOSED TOE SHOES.
- I. DRIVERS MAY MANEUVER FORWARD OR BACKWARD. NO DELIBERATELY RAMMING THE DRIVER'S DOOR.
- J. TIME LIMITS WILL BE SET BY THE JUDGES. IF A DRIVER DOES NOT HIT A LIVE CAR WITHIN THE TIME LIMIT, IT WILL LEAD TO DISQUALIFICATION.
- K. DRIVERS ARE REQUIRED TO CARRY (2) DIFFERENT COLORED FLAGS & ARE REQUIRED TO SELF-SUPPLY: **WHITE** – TO SIGNIFY THEY ARE REMOVING THEMSELVES FROM THE COMPETITION. THIS MUST REMAIN DISPLAYED SO THAT OTHER DRIVERS MAY SEE IT DURING THE REMAINING TIME OF THE HEAT, MAIN EVENT, ETC. **RED** – TO INDICATE TO THE OFFICIALS, EMTS, FIRE DEPARTMENT, ETC THAT THEY HAVE A FIRE OR OTHER EMERGENCY ISSUE. SIZE REQUIREMENTS OF EACH FLAG (DRIVERS, OFFICIALS, ETC) ARE 12X12 ON A ½" DOWEL NO SHORTER THAN 18 INCHES.

- 1. 4 OR 6 CYLINDER COMPACT SIZE STOCK HARDTOP AUTOMOBILE OR STATION WAGON ALLOWED. YOU MAY USE FOREIGN OR DOMESTIC CARS AND FRONT WHEEL DRIVES. TRUCKS, JEEPS, OFF ROAD VEHICLES, REAR ENGINE OR MID ENGINE AUTOS NOT ALLOWED. MUST HAVE A MAXIMUM WHEEL BASE OF 108" MINIMUM 89" IF YOUR CAR IS EQUIPPED WITH 4-WHEEL DRIVE ONE DRIVE SHAFT WILL HAVE TO BE REMOVED. NO MINI SUBCOMPACTS OR MICRO VEHICLES PERMITTED. NO AMC PACERS PERMITTED.
- 2. ALL GLASS AND CHROME TRIM AND ANYTHING THAT MIGHT BECOME IMBEDDED IN TRACK MUST BE REMOVED FROM THE CAR BEFORE BRINGING AUTO TO THE GROUNDS. CAR MUST ALSO BE CLEANED OUT INCLUDING TRUNK. FIRE WALLS MUST REMAIN IN PLACE. THEY CANNOT BE SECTIONED OR DELETED. DO NOT LEAVE BROKEN GLASS IN DOORS CLEAN THEM OUT. AIR BAGS AND SENSORS MUST BE REMOVED. IF WINDSHIELD REMOVED MESH MAY BE PUT IN PLACE OF WINDSHIELD.
- 3. TIRES MUST BE STOCK SIZE 4 PLY ONLY MAXIMUM RATED 45 LBS PSI PRESSURE. MUD AND SNOW OK, NO INNER LINER, NO TRUCK OR LIGHT TRUCK TIRES (LT), NO PADDLE TIRES WITH TRACTOR OR ATV AGGRESSIVE TREAD, NO VALVE STEM GUARDS, OR TIRES BEING HELD ON BY BEING SCREWED TO THE RIM. TIRES CAN ONLY BE FILLED WITH AIR, NO FLUIDS OR SOLIDS, (TIRES WITHIN A TIRE CONSIDERED REINFORCEMENTS) (TIRES MARKED TUBELESS MAY HAVE TUBES INSERTED IN THEM) REMOVE ALL WHEEL BALANCE WEIGHTS. ALL TIRES INCLUDING THE ONES ON THE VEHICLE MUST HAVE NUMBERS ON THEM.
- 4. A MAXIMUM OF FIVE (5) GALLONS OF GASOLINE WILL BE ALLOWED IN GAS TANKS. GAS TANKS MUST BE MOVED TO DRIVER'S COMPARTMENT BACK SEAT. STOCK FUEL TANK IS ALLOWED AS LONG AS ITS MOUNTED SAFELY
- 5. ONLY ONE (1) STOCK BATTERY WILL BE ALLOWED. IT MUST BE ENCASED IN SOME WAY TO CATCH ANY LEAKING ACID IF IT SHOULD BECOME RUPTURED. IT MUST BE MOVED TO THE PASSENGER FLOORBOARD AREA. MUST BE MOUNTED AND COVERED FOR PARTICIPANT'S PROTECTION.

6. NO REINFORCEMENTS OF ANY KIND WILL BE ALLOWED. ONLY EXCEPTION WILL BE THE DRIVER'S SIDE FRONT DOOR AND PASSENGER FRONT DOOR FOR DRIVER SAFETY (GRADER BAR) TRAILER HITCHES OR ANY TYPE OF STIFFENING DEVICE ARE CONSIDERED REINFORCEMENTS. YOU MAY WELD REAR ENDS OR DIFFERENTIALS TO CREATE A POSITIVE TRACTION REAR END. REAR ENDS CAN NOT BE CHAINED - NO TRUCK REAR ENDS. NO FLIPPING OF REAR ENDS. NO LEAF SPRING CONVERSIONS OR LEAF OVER CONVERSIONS WILL BE PERMITTED. NO SOLID SHOCKS OR ADDING EXTRA CLAMPS OR SPRING TO SUSPENSION (SUSPENSION MUST WORK) VEHICLES THAT COME STOCK WITH LEAF SPRINGS CAN HAVE NO MORE THAN 6 LEAF SPRINGS PER SIDE. WELDING/PINNING OF BUMPER SHOCKS IS CONSIDERED REINFORCING. MAXIMUM BUMPER HEIGHT IS 24 INCHES FROM THE GROUND TO THE CENTER OF THE BUMPER
7. STANDARD EXHAUST SYSTEM MAY BE REMOVED OR CUT OFF JUST AFT OF THE FIRE WALL. ADDITIONAL HEADERS, STACKS, OR CUSTOM MANIFOLDS CAN BE USED THROUGH THE HOOD
8. CHAIN, BOLT OR S WELD TRUNK AND DOORS. USE WIRE OR CHAIN ONLY ON 4 PIN POINTS OF HOODS. TRUNKS CAN BE CHAINED SHUT IN 4 FOUR PLACES ONLY. ALL DOORS MUST BE CHAINED SHUT OR WELDED . IF A DRIVER'S SIDE DOOR COMES OPEN HE OR SHE WILL BE DISQUALIFIED.
9. A 10X12 INCH HOLE MUST BE CUT INTO THE CENTER OF HOOD TO ALLOW FOR EARLY FIRE DETECTION. 2 THROTTLE SPRINGS ARE REQUIRED ON ALL VEHICLES. YOU MAY CREATE YOUR OWN FAN SHROUD OUT OF SOME TYPE OF THIN METAL MATERIAL AND REPLACE STIFF ORIGINAL FANS WITH SLIP CLUTCH FANS. YOU MAY USE ELECTRIC FANS (ONLY (1) ONE) ON CARS THAT DID NOT COME EQUIPPED WITH THEM FROM THE FACTORY. HANDLE MUST BE BOLTED ON HOOD.
10. PRIOR TO BRINGING VEHICLE TO FAIRGROUNDS RADIATOR MUST BE DRAINED AND BACK FLUSHED OF ALL ANTIFREEZE COOLANTS. THEY THEN CAN BE REFILLED WITH WATER ONLY. YOU MUST EVACUATE ALL AIR CONDITION APPARATUS (LINES AND PUMPS) AND GAS REFRIGERANT COOLANTS FROM YOUR VEHICLE. TRANSMISSION COOLERS MAY BE USED BUT MUST STAY WITHIN ENGINE COMPARTMENT (UNDER HOOD)
11. SAFETY BELTS, HELMETS AND IMPACT RESISTANT EYE PROTECTORS, ARE REQUIRED. IF CAR WAS EQUIPPED WITH SHOULDER RESTRAINT SYSTEM INCLUDING LAP BELT AND SHOULDER BELT, BOTH MUST BE USED. DRIVER CAN BE DISQUALIFIED AT ANY TIME IF EITHER BELT OR HELMET IS REMOVED DURING A HEAT. DRIVERS MUST WEAR LONG SLEEVE SHIRTS AND PANTS. NO DELIBERATE HEAD ON COLLISIONS OR DELIBERATELY RAMMING A DRIVER'S DOOR. THIS CAN LEAD TO DISQUALIFICATION. A TIME LIMIT OF 60 SECONDS WILL BE SET BY THE JUDGES. IF A DRIVER DOES NOT HIT WITHIN THE SIXTY SECONDS THEY WILL BE TIMED OUT. NO POSSUMS!
12. THE COMPACTS DERBY WILL BE COMPOSED OF ONE HEAT (RUN TILL YOUR DONE). CASH PRIZES AND TROPHIES WILL BE AWARDED AT THE CLOSE OF SUNDAY'S EVENT
13. ALL CARS MUST BE REMOVED FROM FAIR GROUNDS BY THE OWNER BY THE COMPLETION OF DERBY.
14. ADDITIONAL SAFETY REGULATIONS MAY BE IMPOSED DEPENDING ON THE TRACK. AT DISCRETION OF THE OFFICIALS. THE DECISION OF THE OFFICIALS IS FINAL. DRIVERS NOT OBEYING THE RULES WILL BE DISQUALIFIED.

Drivers (and pit crew) with their vehicles in tow, may ONLY enter through GATE #2. That's where you'll get your fair pass(es), wristband(s) and sign a waiver and a copy of the Rules and Regulations. Must enter gate #2 between 8AM and 10AM. Event staff will be present to check you in.

ANY QUESTIONS REGARDING THE RULES AND REGULATIONS PLEASE CONTACT ZAC HAYES 541-993-6053

Wasco County Fair & Rodeo Demolition Derby

RULES and REGULATIONS for LARGE CARS (REVISED 2024)

- A. EACH DRIVER MUST FILL OUT AN ENTRY FORM AND SIGN WAIVER FORM. COST IS \$50 PER CAR. NO FEE IF YOU ENTER 2 OR MORE VEHICLES. COST OF ENTRY INCLUDES FAIR PASSES FOR 1 DRIVER AND 3 PIT CREW MEMBERS. (MAX 3 PIT CREW MEMBERS). **AGES 18+ ONLY!**
- B. ALL RULES AND REGULATIONS MUST BE OBSERVED AND FOLLOWED. TRACK OPERATORS AND PROMOTORS RESERVE THE RIGHT TO APPROVE OR REJECT ANY AND ALL ENTRIES.
- C. ONLY DRIVERS WILL BE PERMITTED IN THE PIT AREA OR ON THE TRACK.
- D. NO TRUCKS PERMITTED ON THE TRACK BEFORE THE HEAT THEY ARE TO PARTICIPATE IN.
- E. NO ALCOHOLIC BEVERAGES ALLOWED. DRIVERS AND PIT CREW MEMBERS THAT ARE OR HAVE BEEN DRINKING WILL BE DISQUALIFIED.
- F. ALL DRIVERS AND PIT CREW MEMBERS MUST BE PRESENT ONE HOUR BEFORE SCHEDULED START TIME.
- G. SAFETY BELTS, GOOGLES/SAFETY GLASSES AND HELMETS ARE REQUIRED.
- H. ALL DRIVERS MUST WEAR LONG SLEEVED SHIRTS, LONG PANTS, AND CLOSED TOE SHOES.
- I. DRIVERS MAY MANEUVER FORWARD OR BACKWARD. NO DELIBERATELY RAMMING THE DRIVER'S DOOR.
- J. TIME LIMITS WILL BE SET BY THE JUDGES. IF A DRIVER DOES NOT HIT A LIVE CAR WITHIN THE TIME LIMIT, IT WILL LEAD TO DISQUALIFICATION.
- K. THE DERBY WILL BE COMPOSED OF INDIVIDUAL HEATS AND A FEATURE.
- L. DRIVERS ARE REQUIRED TO CARRY (2) DIFFERENT COLORED FLAGS & ARE REQUIRED TO SELF-SUPPLY: **WHITE** – TO SIGNIFY THEY ARE REMOVING THEMSELVES FROM THE COMPETITION. THIS MUST REMAIN DISPLAYED SO THAT OTHER DRIVERS MAY SEE IT DURING THE REMAINING TIME OF THE HEAT, MAIN EVENT, ETC. **RED** – TO INDICATE TO THE OFFICIALS, EMTS, FIRE DEPARTMENT, ETC THAT THEY HAVE A FIRE OR OTHER EMERGENCY ISSUE. SIZE REQUIREMENTS OF EACH FLAG (DRIVERS, OFFICIALS, ETC) ARE 12X12 ON A ½" DOWEL NO SHORTER THAN 18 INCHES.

PARTICIPATING REGULATIONS

(CHRYSLER IMPERIALS ARE ALLOWED TO RUN IN LARGE CAR CLASS)

ANY AMERICAN MADE, STOCK HARDTOP AUTOMOBILE OR STATION WAGON IS ALLOWED. NO CONVERTIBLES, LIMOS, TRUCKS, JEEPS, ETC. WILL BE ALLOWED. 4 WHEEL DRIVES. ALL VEHICLES MUST APPEAR STOCK.

- 1. A RADIATOR IS REQUIRED AT ALL TIMES AND MUST BE IN FACTORY LOCATION. ADDITIONAL BRACING OR RENFORCING WILL NOT BE ALLOWED.
- 2. ALL GLASS, PLASTIC TRIM, OUTSIDE DOOR HANDLES, CHROME AND FIBER GLASS NOSES. MUST BE REMOVED. AIRBAGS MUST BE REMOVED
- 3. BATTERY MAY BE MOVED TO THE PASSENGER FRONT FLOOR, MUST BE INSTALLED IN APPROVED BATTERY BOX, WITH LID AND SECURED AND COVERED.
- 4. STOCK GAS TANK MUST BE REMOVED.
- 5. BOAT TANKS AND FUEL CELLS MUST BE MOUNTED IN THE REAR SEAT AREA, MUST BE SECURELY MOUNTED AND FASTENED DOWN TO JUDGES SATISFACTION. HEAVY PLASTIC TANKS WILL BE ALLOWED IF IN GOOD CONDITION. 6 GAL MAX CAPACITY.
- 6. ELECTRIC FUEL PUMPS ARE PERMITTED. THEY MUST HAVE A VISABLE SWITCH FOR TRACK PERSONNEL IN CASE OF FIRE.
- 7. TIRES... NO PADDLE TIRES.. DOUBLES, LIQUID OR FOAM FILLED TUBES AND SNOW TIRES ARE PERMITTED. NO STUDS OR WHEEL WEIGHTS.
- 8. FACTORY STEEL OR ALUMINUM WHEELS ONLY. THERE MAY NOT BE ANY WELD IN CENTERS OR MODIFICATIONS.
- 9. ALL ANTI-FREEZE AND FREON MUST BE DRAINED PRIOR TO ARRIVING AT THE TRACK.
- 10. AN ENCLOSED AIR CLEANER IS REQUIRED AT ALL TIMES.
- 11. A TOGGLE TYPE IGNITION KILL SWITCH ATTACHED TO THE COIL OR DISTRIBUTER IS REQUIRED AND MUST BE INSTALLED WHERE IT IS EASILY ACCESSIBLE TO THE DRIVER.
- 12. FRONT HOOD: MINIMUM MUST BE CHAINED DOWN DURING COMPETITION (3/16" CHAIN MIN). USING 2 CHAINS IN THE FRONT AND 1 CHAIN IN REAR LOCATED ON DRIVER SIDE. HOLES CAN BE

CUT IN HOOD TO RUN CHAIN THROUGH AND MUST BE ATTACHED TO SOMETHING SOLID NOT ALLOWING HOOD TO COME OFF OR SLIDE BACK AND HIT THE DRIVER. IF THIS OPTION IS USED YOU ALSO NEED TO CUT 2-8" HOLES IN DIFFERENT AREAS TO ALLOW FOR ACCESS WITH A FIRE EXTINGUISHER. OTHER HOOD OPTIONS ARE: HOOD CAN BE WELDED AT SEAMS IF CENTER OF HOOD IS CUT OPEN TO REVEAL ALL ENGINE COMPONENTS(FOR FIRE SAFETY). THE FLAPS THAT ARE CUT OPEN CAN BE BENT DOWN AND WELDED TO THE ENGINE COMPARTMENT AREA ON THE DRIVER AND PASSENGER SIDES. THE OTHER OTION THAT CAN BE USED IS 1 CHAIN IN THE REAR DRIVER SIDE AND 1 -3/4" MAX ALLTHREAD ON EACH SIDE OF FRONT OF HOOD ATTACHED TO THE FRAME AND EXTENDED THROUGH THE HOOD ON EACH SIDE. W/WINGNUT AND MAX 4" WASHER. 2 ALLTHREAD TOTAL.

13. HOOD MUST BE OPEN FOR INSPECTION. MUST HAVE (2) 8" HOLES IN HOOD INCASE OF FIRES

14. DOORS MUST BE CHAINED (3/16" CHAIN MIN) OR WELDED SHUT TO NOT ALLOW OPENING WHILE IN THE DERBY.

15. DRIVER'S DOOR MUST BE FILLED SOLID WITH CONCRETE OR REINFORCED WITH A FLAT STEEL BAR OF MINIMUM 6 IN. WIDTH AND MINIMUM 1/2 IN THICKNESS. NO PROTRUDING STEEL WILL BE ALLOWED ON THE DRIVER'S DOOR. IF CHANNEL IRON IS USED IT MUST BE TURNED TO HAVE THE FLAT SIDE FACING OUT. IT MUST HAVE ROUNDED EDGES MOUNTED HORIZONTALLY, EXTENDING ACROSS THE DOOR AND EXTENDED A MINIMUM OF 3 INCHES BEYOND THE DOOR GAP ON EACH END AND NOT OVER 12 IN. (TWO BARS ACROSS THE DOOR IS OPTIONAL) GRADER BAR IS RECOMMENDED BECAUSE OF ITS STRENGTH. THE BAR MUST BE FASTENED WITH 6, 7/16 IN. THICKNESS BOLTS SPACED EVENLY. THE THREADED PORTION OF THE BOLTS MUST EXTEND INSIDE THE DOOR BUT NOT BE A HAZARD TO THE DRIVER. YOU CAN ADD A GRADER BAR TO THE PASSENGER SIDE DOOR FOR DRIVER'S SAFETY.

16. HITTING OF THE DRIVER'S SIDE DOOR IS PROHIBITED AND MAY RESULT IN DISQUALIFICATION. DRIVER'S DOOR MUST BE PAINTED ORANGE AND ONLY THE DOOR CAN BE PAINTED ORANGE. NO OTHER ORANGE IS ALLOWED ON THE CAR. NUMBERS ON DRIVER'S DOOR WILL BE PAINTED IN BLACK. THIS IS TO ELIMINATE DOOR HITS. ALSO THE NUMBER IS TO BE PAINTED ON THE ROOF OF THE CAR TO ENABLE THE ANNOUNCER TO READ.

17. TRUNKS: MIN MUST BE CHAINED SHUT WITH (3/16" CHAIN MIN) ALSO MAY BE WELDED SHUT BUT THERE MUST BE AN OPENING LEFT FOR THE JUDGES TO INSPECT INSIDE TRUNK AREA.

18. REAR ENDS MAY BE LOCKED. THEY ALSO MAY BE SWAPPED FROM ANOTHER MAKE/MODEL 5 LUG WHEEL PATTERN MAXIMUM. NO LEAF OVER CONVERSIONS. YOU CAN USE PICKUP REAR ENDS (6 OR 8 LUG IF MAINTAINING FACTORY CAR HEIGHT)

19. SLIDER DRIVE SHAFTS MAY BE USED

20. SHIFTING MECHANISM MAY BE ALTERED.

21. THE GAS/BRAKE PEDAL MAY BE ALTERED.

22. FENDERS MAY BE CUT FOR TIRE CLEARANCE.

23. SUSPENSIONS MAY ONLY BE ALTERED TO RESTORE FACTORY HEIGHT. IT MUST MOVE WITH ONE MAN'S EFFORT. NO REINFORCING OF ANY KIND. COIL SPRINGS MAY BE SECURED, LEAF SPRINGS MAY BE CLAMPED (3) CLAMPS PER SIDE

24. EXHAUST MAY EXIT THROUGH THE HOOD (MUST BE TEN INCHES ABOVE THE CARBURETOR).

25. ALL AIRBAGS MUST BE REMOVED.

26. BUMPERS, MAY BE BOLTED SOLID OR WELDED. BUMPER PLUNGERS MAY BE WELDED BUT BUMPER SHOCKS MAY NOT BE WELDED TO THE FRAME ALSO BUMPERS MUST REMAIN IN STOCK POSITION. A MAX 6"x6"x 1/4 INCH THICK FLAT PLATE MAY BE WELDED TO THE FRONT OF FRAME TO MOUNT YOUR BUMPER ONE (1) PER FRAME HORN. NO KICKERS OR EXTRA MATERIALS MAY BE ADDED. LARGE CARS CAN ALSO USE 4"x4"x1/4 INCH WALL SQUARE TUBING FOR A FRONT BUMPER.

27. BUMPERS MAY BE SWAPPED BETWEEN MAKES/MODELS, BUT THEY MUST BE STOCK, PASSENGER CAR BUMPERS.

28. WELDING OF FRAMES OR BODY SEAMS IS ALLOWED. (5/8 REBAR MAX SIZE NO FLAT STRAP. CAN ONLY FILL 5/8 SEAMS ON BODY, AS WELL AS BUMPER TO BODY) ALL TRAILER HITCHES MUST BE REMOVED.

29. FRAME SWAPS ARE NOT PERMITTED. RUST REPAIR MAY BE MADE USING THE SAME THICKNESS METAL AS THE FRAME. YOU MAY ONLY GO 1 INCH PAST THE RUST HOLE YOU ARE REPAIRING (YOU MUST TAKE A PICTURE OF REPAIR WORK BEFORE PATCHING)

30. ENGINE SWAPS ARE ACCEPTABLE. ENGINE MOUNTS MAY BE WELDED, CHAINED OR BOLTED SOLID.
31. SEAT, DASH BAR WILL BE PERMITTED (3"INCHES ROUND DOOR TO DOOR OR POST TO POST ONLY MUST BE BOLTED OR WELDED TO JUDGE'S SATISFACTION.
32. EACH PIT CREW AND CAR (INSTALLED INSIDE) MUST HAVE A 2 ½ LB FULLY CHARGED FIRE EXTINGUISHER AVAILABLE.
33. 1 PERSON IN THE VEHICLE ONLY. NO PASSENGERS ALLOWED.
34. BAD CONDUCT, NUISANCE BEHAVIOR, OR ANY ACT THAT IN ANY WAY JEOPARDIZES THE SPECTATORS OR THE DEMOLITION DERBY IN GENERAL WILL RESULT IN IMMEDIATE EXPULSION FROM THE GROUNDS. SHERIFF DEPUTIES ARE ON SITE.
35. ALL CARS MUST HAVE LEGAL TITLE OR BILL OF SALE PRIOR TO COMPETING, THIS WILL BE CHECKED.
36. ALL CARS MUST BE REMOVED FROM THE FAIRGROUNDS AT THE END OF THE DAY'S EVENT UNLESS CLEARED WITH ZAC HAYES OR THE GROUNDS CARETAKER.
37. NO DOGS ARE ALLOWED IN THE DERBY PIT AREA. LEAVE YOUR DOGS AT HOME, IT IS ALWAYS A VERY HOT AND LONG DAY AND NOT A GOOD PLACE FOR THEM.
38. TO MAKE INSPECTION FASTER AND EASIER ON YOU, PLEASE FOLLOW ALL THE RULES.
39. CAR NUMBERS WILL BE GIVEN ON A FIRST-COME, FIRST-SERVE BASIS. STATE YOUR CHOICES ON YOUR REGISTRATION FORM.
40. ALL DECISIONS BY JUDGES ARE FINAL.
41. ALL CARS MUST HAVE NUMBER PLATES MOUNTED ON ROOF OF CARS (EASIER FOR ANNOUNCER AND JUDGES TO SEE)

Drivers (and pit crew) with their vehicles in tow, may ONLY enter through GATE #2. That's where you'll get your fair pass(es), wristband(s) and sign a waiver and a copy of the Rules and Regulations. Must enter gate #2 between 8AM and 10AM. Event staff will be present to check you in.

ANY QUESTIONS REGARDING THE RULES AND REGULATIONS PLEASE CONTACT ZAC HAYES 541-993-6053

Wasco County Fair & Rodeo Demolition Derby RULES and REGULATIONS for TRUCKS (REVISED 2024)

- A. EACH DRIVER MUST FILL OUT AN ENTRY FORM AND SIGN WAIVER FORM. COST IS \$50 PER TRUCK. NO FEE IF YOU ENTER 2 OR MORE VEHICLES. COST OF ENTRY INCLUDES FAIR PASSES FOR 1 DRIVER AND 3 PIT CREW MEMBERS. (MAX 3 PIT CREW MEMBERS). **AGES 18+ ONLY!**
- B. ALL RULES AND REGULATIONS MUST BE OBSERVED AND FOLLOWED. TRACK OPERATORS AND PROMOTORS RESERVE THE RIGHT TO APPROVE OR REJECT ANY AND ALL ENTRIES.
- C. ONLY DRIVERS WILL BE PERMITTED IN THE PIT AREA OR ON THE TRACK.
- D. NO TRUCKS PERMITTED ON THE TRACK BEFORE THE HEAT THEY ARE TO PARTICIPATE IN.
- E. NO ALCOHOLIC BEVERAGES ALLOWED. DRIVERS AND PIT CREW MEMBERS THAT ARE OR HAVE BEEN DRINKING WILL BE DISQUALIFIED.
- F. ALL DRIVERS AND PIT CREW MEMBERS MUST BE PRESENT ONE HOUR BEFORE SCHEDULED START TIME.
- G. SAFETY BELTS, GOOGLES/SAFETY GLASSES AND HELMETS ARE REQUIRED.
- H. ALL DRIVERS MUST WEAR LONG SLEEVED SHIRTS, LONG PANTS, AND CLOSED TOE SHOES.
- I. DRIVERS MAY MANEUVER FORWARD OR BACKWARD. NO DELIBERATELY RAMMING THE DRIVER'S DOOR.
- J. TIME LIMITS WILL BE SET BY THE JUDGES. IF A DRIVER DOES NOT HIT A LIVE VEHICLE WITHIN THE TIME LIMIT, IT WILL LEAD TO DISQUALIFICATION.
- K. THE DERBY WILL BE COMPOSED OF INDIVIDUAL HEATS AND A FEATURE.
- L. DRIVERS ARE REQUIRED TO CARRY (2) DIFFERENT COLORED FLAGS & ARE REQUIRED TO SELF-SUPPLY: **WHITE** – TO SIGNIFY THEY ARE REMOVING THEMSELVES FROM THE COMPETITION. THIS MUST REMAIN DISPLAYED SO THAT OTHER DRIVERS MAY SEE IT DURING THE REMAINING TIME OF THE HEAT, MAIN EVENT, ETC. **RED** – TO INDICATE TO THE OFFICIALS, EMTS, FIRE DEPARTMENT, ETC THAT THEY HAVE A FIRE OR OTHER EMERGENCY ISSUE. SIZE REQUIREMENTS OF EACH FLAG (DRIVERS, OFFICIALS, ETC) ARE 12X12 ON A ½" DOWEL NO SHORTER THAN 18 INCHES.

PARTICIPATING REGULATIONS

- 1. ANY AMERICAN MADE 2 OR 4 WHEEL DRIVE FULL SIZE PICK-UP TRUCK OR VAN . ANY FOUR WHEEL DRIVE VEHICLES MUST REMOVE ONE DRIVE SHAFT (YOUR CHOICE). UPON GETTING TO THE TRACK
- 2. ALL GLASS, PLASTIC TRIM, OUTSIDE DOOR HANDLES, CHROME AND FIBER GLASS NOSES. MUST BE REMOVED. AIRBAGS MUST BE REMOVED
- 3. TRUCK MUST APPEAR STOCK. UNLESS NOTED BELOW. NO TRAILER HITCHES PERMITTED. BATTERY MUST BE SECURED AND COVERED. BATTERY MAY BE MOVED TO FRONT FLOOR OF CAB.
- 4. AN ENCLOSED AIR CLEANER IS REQUIRED AT ALL TIMES.
- 5. A TOGGLE TYPE IGNITION KILL SWITCH ATTACHED TO THE COIL OR DISTRIBUTER IS REQUIRED AND MUST BE INSTALLED WHERE IT IS EASILY ACCESSIBLE TO THE DRIVER.
- 6. ELECTRIC FUEL PUMPS ARE PERMITTED. FUEL TANKS MUST BE LOCATED IN THE BED OF THE TRUCK IN THE CENTER OF THE BED DIRECTLY BEHIND THE CAB. 6 GAL CAP. MAX.
- 7. STOCK GAS TANK MUST BE REMOVED.
- 8. A RADIATOR IS REQUIRED AT ALL TIMES AND MUST BE IN FACTORY LOCATION. ADDITIONAL BRACING OR RENFORCING WILL NOT BE ALLOWED.
- 9. BUMPERS- CAN USE 4X4 SQUARE TUBING NO MORE THAN ¼ INCH THICKNESS (NO POINTIES)
- 10. TIRES ARE TO BE STOCK SIZE FOR TRUCKS. ANY PLY DOT APPROVED. NO TRACTOR TREADS OR PADDLE TIRES. SPLIT RIMS ARE NOT PERMITTED. HOWEVER, DOUBLES, LIQUID OR FOAM FILLED TIRES ARE PERMITTED. VALVE STEM PROTECTORS ARE PERMITTED.
- 11. FACTORY STEEL OR ALUMINUM WHEELS. NO MODIFICATIONS OR BUD WHEELS. ONE WHEEL PER AXLE.
- 12. ALL ANTI-FREEZE AND FREON MUST BE DRAINED PRIOR TO ARRIVING AT THE TRACK.
- 13. TAILGATES MUST BE CHAINED OR WELDED SHUT OR BE REMOVED.
- 14. DOORS; MUST BE CHAINED OR WELDED SHUT.
- 15. DRIVER'S DOOR MUST BE FILLLED SOLID WITH CONCRETE OR REINFORCED WITH A FLAT STEEL BAR OF MINIMUM 6 IN. WIDTH AND MINIMUM ½ IN THICKNESS. NO PROTRUDING STEEL WILL BE ALLOWED ON THE DRIVERS DOOR. IF CHANNEL IRON IS USED IT MUST BE TURNED TO HAVE

THE FLAT SIDE FACING OUT. IT MUST HAVE ROUNDED EDGES MOUNTED HORIZONTALLY, EXTENDING ACROSS THE DOOR AND EXTENDED A MINIMUM OF 3 INCHES BEYOND THE DOOR GAP ON EACH END AND NOT OVER 12 IN. (TWO BARS ACROSS THE DOOR IS OPTIONAL) GRADER BAR IS RECOMMENDED BECAUSE OF ITS STRENGTH. THE BAR MUST BE FASTENED WITH 6, 7/16 IN. THICKNESS BOLTS SPACED EVENLY. THE THREADED PORTION OF THE BOLTS MUST EXTEND INSIDE THE DOOR BUT NOT BE A HAZARD TO THE DRIVER. (GRADER BAR CAN BE ADDED TO PASSENGER DOOR FOR DRIVER SAFETY)

16. HITTING OF THE DRIVER'S SIDE DOOR IS PROHIBITED AND MAY RESULT IN DISQUALIFICATION. DRIVER'S DOOR MUST BE PAINTED ORANGE AND ONLY THE DOOR CAN BE PAINTED ORANGE. NO OTHER ORANGE IS ALLOWED ON THE CAR. NUMBERS ON DRIVER'S DOOR WILL BE PAINTED IN BLACK. THIS IS TO ELIMINATE DOOR HITS. ALSO THE NUMBER IS TO BE PAINTED ON THE ROOF OF THE CAR TO ENABLE THE ANNOUNCER TO READ.

17. WIRE MESH MUST BE IN PLACE OF REAR WINDOW. WELD OR BOLT TO COVER BACK WINDOW.

18. HOODS MUST BE CHAINED SHUT. 2 CHAINS IN FRONT AND 1 CHAIN ON DRIVER SIDE REAR. NEEDS TO PREVENT HOOD FROM OPENING AND/OR MOVING BACK TOWARD DRIVER.

19. TRUCK MUST HAVE FACTORY-STYLE BED INSTALLED. (NO FLATBEDS)

20. EXTRA BED BOLTS ARE RECOMMENDED (FOUR MAXIMUM).

21. BED SIZE MUST REMAIN VERTICAL. NO WEDGING.

22. REAR ENDS MAY BE LOCKED.

23. REAR ENDS MAY BE SWAPPED.

24. NO ALTERATIONS OF THE SUSPENSION WILL BE ALLOWED.

25. SHIFTING MECHANISM MAY BE ALTERED.

26. EXHAUST MAY EXIT THROUGH THE HOOD (MUST BE TEN INCHES ABOVE THE CARBURETOR).

27. ALL AIRBAGS MUST BE REMOVED.

28. IF RUNNING A STOCK FAN, THE HOOD CANNOT BE CUT OUT ABOVE IT.

29. ENGINE SWAPS ARE ACCEPTABLE. ENGINE MOUNTS MAY BE WELDED, CHAINED, OR BOLTED SOLID.

30. NO ENGINE PROTECTORS/CRADLES.

31. ALL CARS MUST HAVE LEGAL TITLE OR BILL OF SALE PRIOR TO COMPETING, THIS WILL BE CHECKED.

32. ALL TRUCKS MUST BE REMOVED FROM THE FAIRGROUNDS AT THE END OF THE DAYS EVENT UNLESS CLEARED WITH ZAC HAYES AND THE GROUNDS CARETAKER.

33. TRUCK NUMBERS WILL BE GIVEN ON A FIRST-COME, FIRST-SERVE BASIS. STATE YOUR CHOICES ON YOUR REGISTRATION FORM.

34. NO DOGS ARE ALLOWED IN THE DERBY PIT AREA. LEAVE YOUR DOGS AT HOME, IT IS ALWAYS A VERY HOT AND LONG DAY AND NOT A GOOD PLACE FOR THEM.

35. BAD CONDUCT, NUISANCE BEHAVIOR, OR ANY ACT THAT IN ANY WAY JEOPARDIZES THE SPECTATORS OR THE DEMOLITION DERBY IN GENERAL WILL RESULT IN IMMEDIATE EXPULSION FROM THE GROUNDS. SHERIFF DEPUTIES ARE ON SITE.

36. ALL DECISIONS BY JUDGES ARE FINAL.

Drivers (and pit crew) with their vehicles in tow, may ONLY enter through GATE #2. That's where you'll get your fair pass(es), wristband(s) and sign a waiver and a copy of the Rules and Regulations. Must enter gate #2 between 8AM and 10AM. Event staff will be present to check you in.

ANY QUESTIONS REGARDING THE RULES AND REGULATIONS PLEASE CONTACT ZAC HAYES 541-993-6053