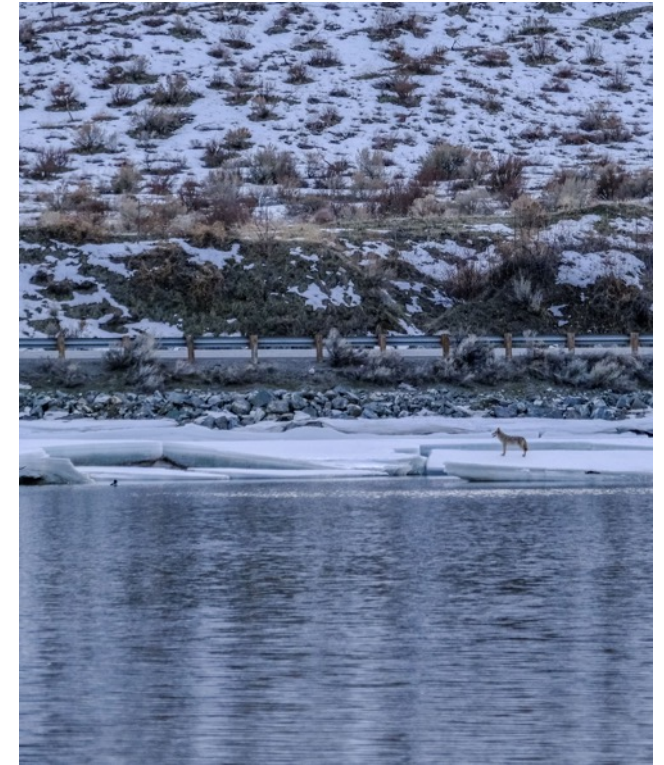

TOWN OF TWISP SHORELINE MASTER PROGRAM PERIODIC REVIEW UPDATE



Photo by Michelle Miller

TOPICS

- Introductions
- Goals
- Shoreline Management Act (SMA)
- Shoreline Master Program (SMP)
- Updating the SMP
- Scoping
- Public Participation
- Schedule
- Discussion



Photos by Michelle Miller

INTRODUCTIONS

- Kurt Danison, Planner, Highlands Associates



Photo by Michelle Miller

PRESENTATION GOALS

- Provide overview of the Shoreline Management Act and the periodic review update process
- Discuss why public participation is necessary and important
- Answer your questions



Photos by Michelle Miller

SHORELINE MANAGEMENT ACT (SMA)

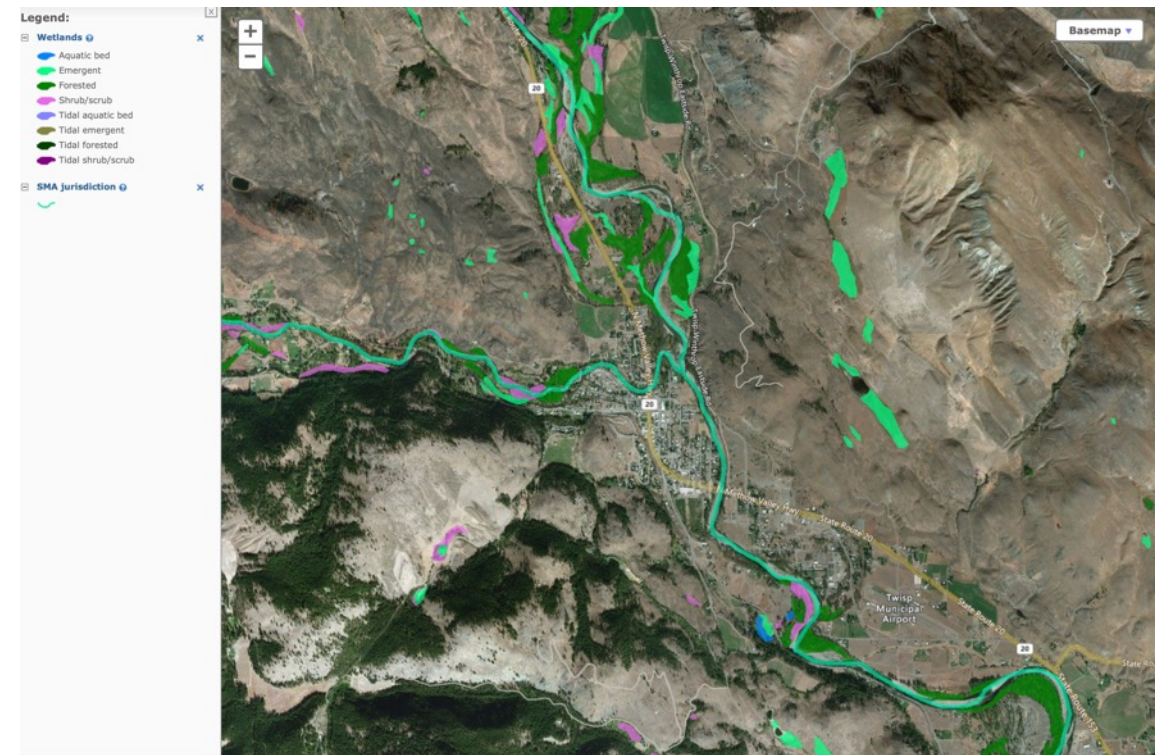
- The SMA is a state law (RCW 90.58)
- Provides a framework for managing, accessing, and protecting shorelines.
 - Goal: prevent the inherent harm from uncoordinated and piecemeal development of shorelines.
- Reflects the strong interest of the community for recreation, protection of natural areas, aesthetics, and commerce on Washington's shorelines and waterways.
- Is a cooperative program between the Town of Twisp and the Department of Ecology (Ecology).



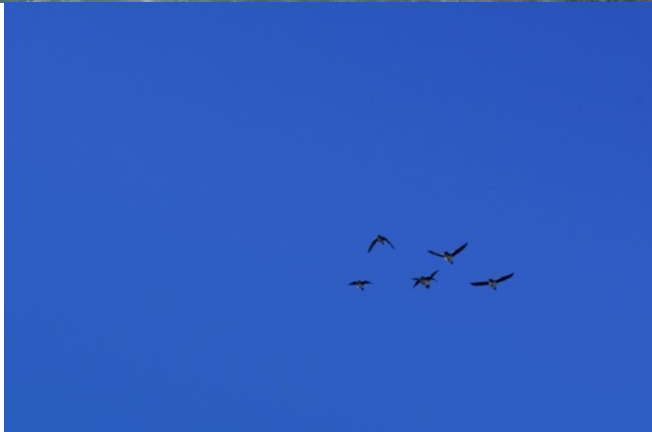
Photo by Michelle Miller

WHERE SMA APPLIES

- The SMA applies to:
 - Marine waters
 - Rivers and streams over 20 cubic feet per second mean annual flow
 - Lakes and reservoirs 20 acres and greater
 - Adjacent areas, typically within 200 feet of the Ordinary High Water Mark (OHWM)
 - Wetlands



SHORELINE MASTER PROGRAM (SMP)



Photos by Michelle Miller

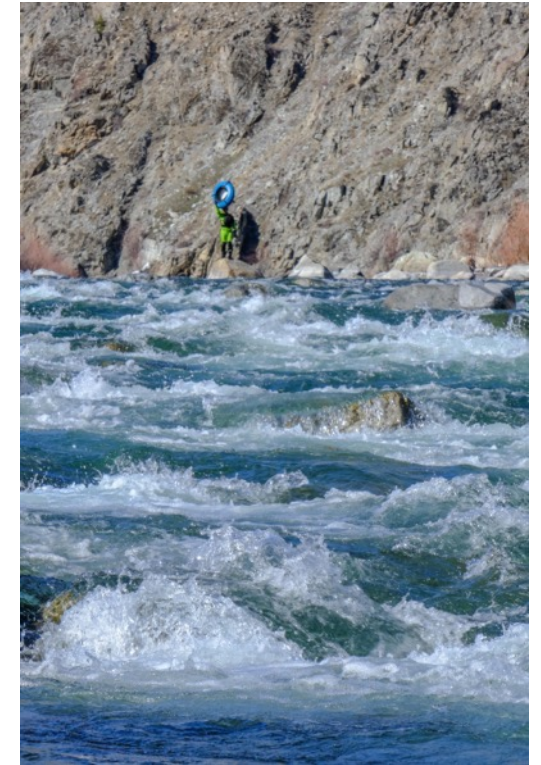
- SMP is:
 - A planning and regulatory document
 - Prepared by local government
 - Subject to laws (RCW 90.58)
 - Subject to rules (WAC 173-26)
- SMP contains local policies and regulations
- Town of Twisp's SMP adopted 2012

SMP (CONTINUED)

- Town of Twisp
 - Initiates and plans SMP
 - Administers and enforces the SMP
- Ecology
 - Provides grant funds for SMP updates
 - Must approve SMP
 - Reviews and approves conditional use permits and variances.

PREFERRED USES OF SHORELINES

- The preferred uses of the shoreline, in preference order are:
 - Protect and restore
 - Water dependent and water related uses
 - Mixed use developments
 - Water related and water enjoyment uses
 - Single family residential uses



Photos by Michelle Miller

PERIODIC REVIEW UPDATE

- A periodic review is generally a multi year planning process with 6 phases (P1-P6):
 - P1 - Public participation plan
 - P2 - Inventory
 - P3 - Designations, policy & regulations, cumulative impacts
 - P4 - Restoration plan
 - P5 - Local approval
 - P6 - State approval

SMP Periodic Review Timelines and Process

**PHASE 1: PROJECT DEVELOPMENT AND
INITIATE PUBLIC PARTICIPATION**
January 2022 – March 2022

March 9, 2022 PC meeting

**PHASE 2: SHORELINE INVENTORY AND
CHARACTERIZATION**
April – June 2022

May 11, 2022 PC Meeting

**PHASE 3: DESIGNATION, POLICY, AND
REGULATION DEVELOPMENT,
CUMULATIVE IMPACTS ANALYSIS**
July – October 2022

August 10, 2022 PC Meeting

PHASE 4: RESTORATION PLAN
November 2022 - January 2023

January 11, 2023 PC Meeting

PHASE 5: LOCAL APPROVAL
February – May 2023

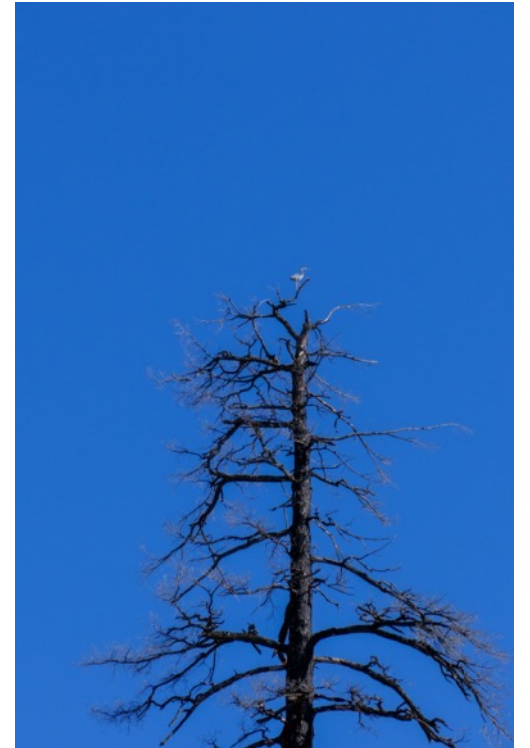
PC Public Hearing April 12, 2023

**PHASE 6: STATE APPROVAL &
ADOPTION**
May - June 2023

Town Council Public Hearing May 23, 2023

SCOPING

- Consistency review of existing SMP
- What needs to be updated?
- Shoreline issues?
 - Flooding
 - Public access
 - Habitat loss
 - Vegetation
- Restoration needed?



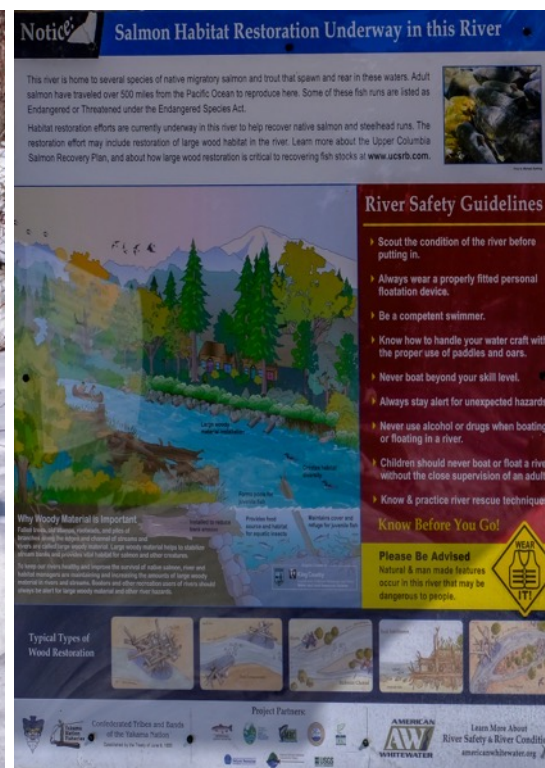
Photos by Michelle Miller

PUBLIC PARTICIPATION PLAN

- Website
 - Survey
 - Community visioning
- One of the policies in the SMA is to promote public access and enjoyment opportunities.
 - Allows community to realize vision for the shorelines
 - Allows for strategic development
 - Preserves shorelines for future generations
 - Maintains and encourages public access

SURVEY - [HTTPS://WWW.SURVEYMONKEY.COM/R/TWISPSMP](https://www.surveymonkey.com/r/TWISPSMP)

- Please complete the survey!



Photos by Michelle Miller

DISCUSSION



Photo by Michelle Miller

- Questions
- Comments
- Suggestions