

NOTE-A
 PROVIDE A COMPLETE VEHICLE EXHAUST MONITORING SYSTEM. GAS DETECTION & CONTROL SYSTEM SHALL BE EQUAL TO TOXALERT MODEL GVU-1. COMPLETE WITH CO SENSORS, NO2 SENSORS & PANEL MOUNTED OPTIONS AS FOLLOWS: POWER ON INDICATOR, WARNING INDICATOR, FAN ON INDICATOR, POWER TO SENSOR INDICATORS, AUDIBLE/VISUAL ALARM W/ SILENCE PUSHBUTTON, MANUAL OVERRIDE (PURGE) SWITCH. PROVIDE FACTORY START-UP AND ALL REQUIRED CONTROL WIRING & INTERLOCKING WITH MOTORIZED DAMPERS & EXHAUST FAN. PANEL VOLTAGE SHALL BE 120 VOLTS. PROVIDE TRANSFORMER AS REQUIRED.

18"Wx18"H EXHAUST LOUVER, .87 SFFA, GREENHECK MODEL EDK-402 W/ FLANGED FRAME, BIRDSCREEN & BAKED ENAMEL FINISH (COLOR SELECTION BY ARCHITECT) PROVIDE FULL SIZE DUCT PLENUM.

NOTE:
 ADD NEW HOT GAS BYPASS KIT (RAWAL VALVE AS APPROVED BY CARRIER) TO EACH OF THE EXISTING CONDENSING UNITS. (TYP 6)

30"Wx18"H F.A. INTAKE LOUVER, 1.56 SFFA, GREENHECK MODEL EDK-402 W/ FLANGED FRAME, BIRDSCREEN & BAKED ENAMEL FINISH (COLOR SELECTION BY ARCHITECT) PROVIDE FULL SIZE DUCT PLENUM.

18"Wx18"H EXHAUST LOUVER, .87 SFFA, GREENHECK MODEL EDK-402 W/ FLANGED FRAME, BIRDSCREEN & BAKED ENAMEL FINISH (COLOR SELECTION BY ARCHITECT) PROVIDE FULL SIZE DUCT PLENUM.

ERV TO BE LOCATED IN ATTIC SPACE. PROVIDE ACCESS PANEL FOR INSTALLATION & SERVICE

VEHICLE EXHAUST MONITORING SYSTEM PANEL, SEE NOTE-A

PURGE SYSTEM - HIGH/LOW WALL 250 EA. EXHAUST REGISTERS

NOTES:
 1. SECURE AREA: ALL RGDs & WALL SWITCHES IN SECURE AREAS SHALL BE SECURITY GRADE WITH TAMPERPROOF HARDWARE & FASTENERS. COORDINATE LIMITS WITH G.C.
 2. CEILING RADIATION DAMPERS TO BE INSTALLED IN ALL DUCTS THAT PENETRATE THE RATED ATTIC/CEILING MEMBRANE ABOVE THE CELLS THAT SERVE THE RGDs

REMOVE SPACE MOUNTED THERMOSTAT & INSTALL NEW DUCT MOUNTED RETURN AIR SENSOR TO CONTROL GF-5

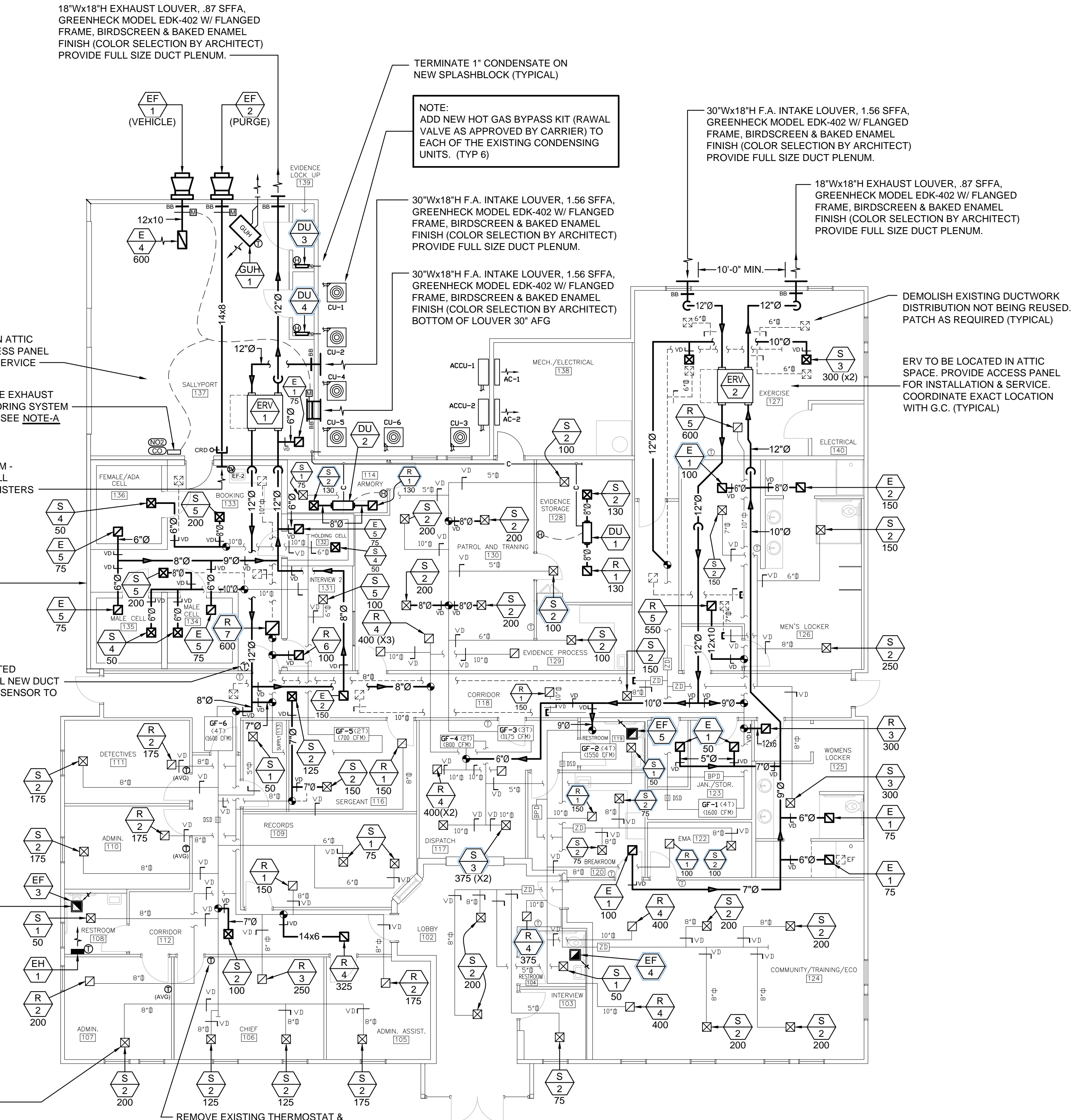
RUN 6"Ø DUCT TO ROOF CAP (TYPICAL FOR ALL CEILING EXHAUST FANS)

NOTE:
 REMOVE ALL EXISTING FIRE DAMPERS MOUNTED AT THE RATED CEILING PENETRATIONS SERVING THE REGISTERS, GRILLES & DIFFUSERS. PROVIDE NEW RADIATION DAMPERS AT THE RATED CEILING PENETRATIONS. REFER TO RGD SCHEDULE

REMOVE EXISTING THERMOSTAT & PROVIDE NEW THERMOSTAT W/ REMOTE AVERAGING SENSORS

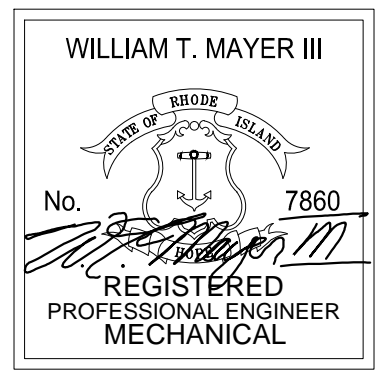
DEMOLISH EXISTING DUCTWORK DISTRIBUTION NOT BEING REUSED. PATCH AS REQUIRED (TYPICAL)

ERV TO BE LOCATED IN ATTIC SPACE. PROVIDE ACCESS PANEL FOR INSTALLATION & SERVICE. COORDINATE EXACT LOCATION WITH G.C. (TYPICAL)



1 MECHANICAL FLOOR PLAN
 M1 SCALE: 1/8"=1'-0"

CERTIFICATION :



THIS DRAWING IS A PART OF AN INTEGRATED SET OF CONSTRUCTION CONTRACT DOCUMENTS. REFER TO ALL DRAWINGS AND SPECIFICATIONS INCLUDING BUT NOT LIMITED TO "GENERAL CONDITIONS", "SUMMARY OF WORK", AND ANY APPLICABLE MANUFACTURERS TECHNICAL SPECIFICATIONS.
 REFER TO ALL DRAWINGS FOR COMPLETE SCOPE OF WORK.
 THIS DRAWING IS NOT TO BE SCALED OR USED AS AN AS-BUILT.

REV. NO.	DATE	DESCRIPTION

ENGINEERING DESIGN SERVICES INCORPORATED
 141 Industrial Highway Slatersville, RI 02876
 Tel (401) 765-7659 Fax (401) 765-2984

SCITUATE POLICE STATION

SHEET TITLE:
MECHANICAL FLOOR PLAN

JOB NO.: 19349MU
 DRAWN BY: KB
 CHECKED BY: WM
 DATE ISSUED: 03.12.2020
 SCALE: AS NOTED

SHEET NO.:
M1