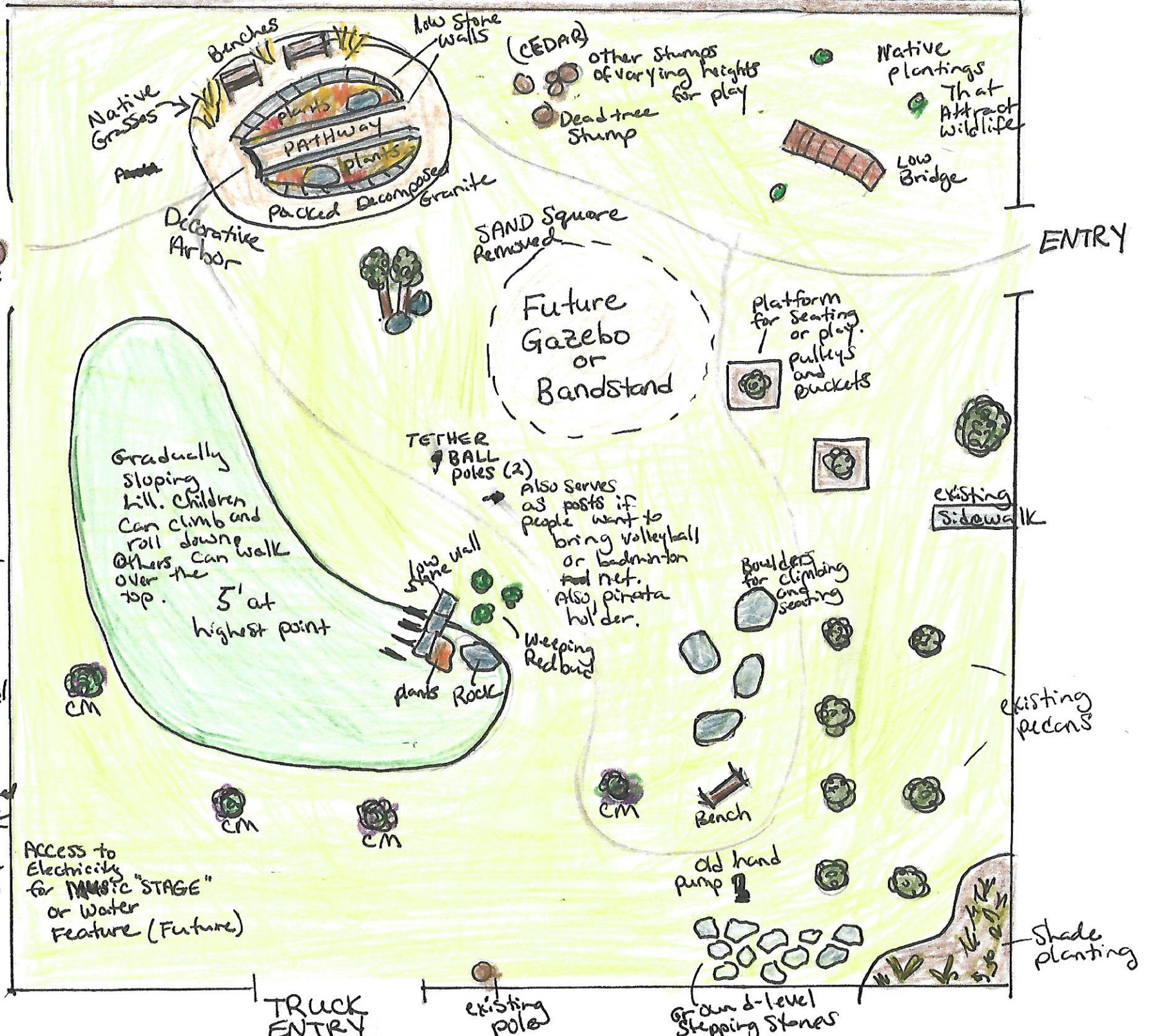


PLACES TO GROW
Proposed Thrall
Play Garden
Design
9-21-22

ENTRY
existing pole

Key

- CM = crape myrtle
- Myrtle
- Potential future path of packed dirt/crushed granite



Gradually sloping hill. Children can climb and roll down. Others can walk over the top. 5' at highest point

Future Gazebo or Bandstand

TETHER BALL poles (2)
Also serves as posts if people want to bring volleyball or badminton net. Also pinata holder.

Platform for seating or play. pulleys and buckets

Boulders for climbing and seating

Old hand pump

Ground-level Stepping Stones

Shade planting

Access to Electricity for MUSIC "STAGE" or Water Feature (Future)

TRUCK ENTRY

existing pole

ENTRY

existing sidewalk

existing pecans

Native plantings that attract wildlife

Low Bridge

(CEDAR) other stumps of varying heights for play
Dead tree stump

Decorative Arbor
Packed Decomposed Granite

Benches
Native Grasses
Low Stone Walls



Electric pole