



TEPAC

TARBORO-EDGECOMBE PUBLIC ARTS COMMISSION

Blount-Bridgers House • Hobson Pittman Memorial Gallery
130 Bridgers Street • Tarboro, NC 27886
252-823-4159 • artsdirector@tarboro-nc.com

The **Tarboro-Edgecombe Public Arts Commission (TEPAC)** is a partnership between the Town of Tarboro and Edgecombe County, created to promote and coordinate cultural arts education, activities and events in the Tarboro-Edgecombe area. The TEPAC office is located in the historic Blount-Bridgers House (c. 1808). The charming Federal style house serves as both a history museum (first floor) and an art gallery (second floor). The museum is open to the public Monday through Friday mornings from 10 AM – 12 PM, and afternoons from 2 PM – 4 PM. Tours outside regular operating hours may be scheduled by appointment. Please contact Arts Director, Eric Greene by phone at (252) 823-4159 or via email at artsdirector@tarboro-nc.com.

Blount-Bridgers House

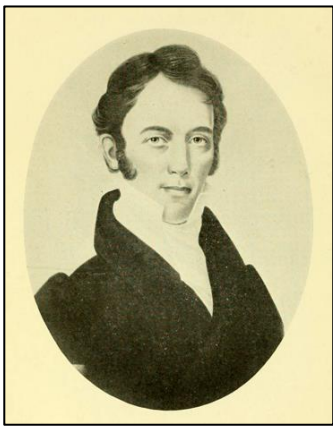


The **Blount-Bridgers House** (c. 1808), originally known as “The Grove,” was built by Thomas Blount (1759-1812) on land purchased in 1795. It is a handsome Federal style house, consisting of five bays with a gable roof, central doorways on front and back, shuttered windows of nine-over-nine sash, modillion cornice, double beaded weatherboarding, and pairs of double shoulder Flemish bond chimneys on either end, centered by fanlight windows in the attic. The building has undergone only slight physical alteration through the years, the most notable being the addition of the Italianate shed porch (c. 1850), which gives it much of its character, today. The house is located in Tarboro’s charming 45-block Historic District, and was listed on the National Register of Historic places in 1971. The first floor serves as a history museum, featuring period

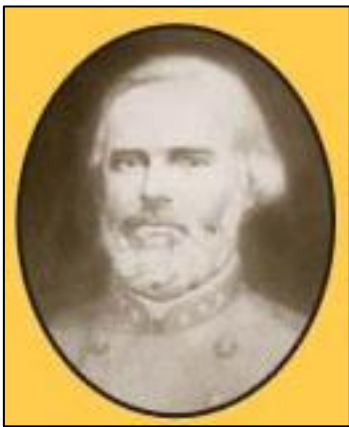
appropriate Edgecombe County furniture and focusing on significant Edgecombe County residents, including the first three owners of the house (Thomas Blount, Louis D. Wilson and John L. Bridgers) among others.



Thomas Blount (1759-1812)



Louis D. Wilson (1789-1847)



John L. Bridgers (1821-1884)

Blount-Bridgers Arboretum and Grounds

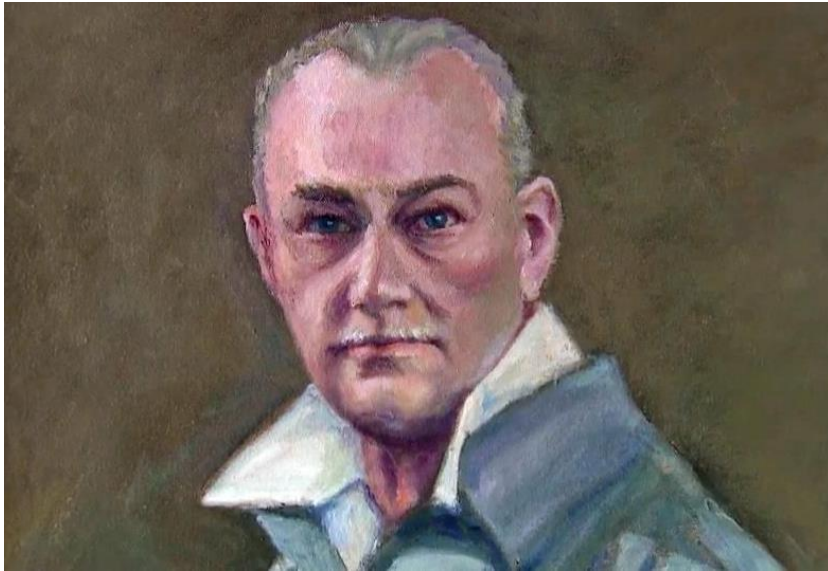


The **Blount-Bridgers Arboretum** is a historic site with beautiful gardens reflecting how the grounds may have appeared in the early 1800s. The Arboretum is always open and free to the public. There is a fee to reserve the grounds for special private events. The expansive lawn of the Blount-Bridgers House is an ideal spot for weddings, receptions and other large outdoor gatherings. There is ample space to accommodate large tent events. For more information on reserving the grounds for your next event, please contact Eric Greene at the Blount-Bridgers House (252) 823-4159, or via email at artsdirector@tarboro-nc.com .

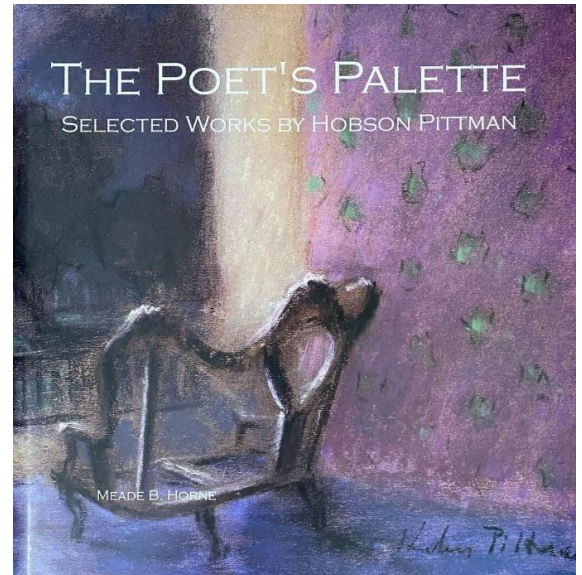
RENTAL RATES:

■ 2 nd Floor Gallery Only *	\$250.00	■ House, Porch and Grounds	\$1,125.00
■ 1 st & 2 nd Floors ◇	\$450.00	* Recommended max of 40 for seated dinner	
■ Porch and Grounds	\$750.00	◇ Maximum occupancy is 75 persons (T.F.D.)	

Hobson Pittman Memorial Gallery



Relief from *Portrait of Hobson Pittman* by Nancy Roberson



The Poet's Palette book by Meade B. Horne



Hobson Pittman Studio



Hobson Pittman Memorial Gallery

The second floor of the Blount-Bridgers House features the **Hobson Pittman Memorial Gallery**, a public exhibition space and living museum honoring Edgecombe County's premier twentieth century visual artist, Hobson Pittman (1899-1972). The main gallery extends the length of the house, and features exhibitions from local and regional artists, as well as from the permanent collection. The long room features a 9-foot Yamaha concert grand piano at one end, making the gallery an ideal spot for intimate receptions and recitals. Opposite the main gallery is a living museum to Pittman, which includes a collection of the artist's works in oil, pastel, watercolor, pencil and linocut (a form of printmaking). The artist's easel, palette, paintbrushes, pastels and palette knives are permanently displayed in the Hobson Pittman Studio, along with some of his still life subjects, such as flower vases and waxed fruits. Many personal items from the Pittman estate are also exhibited, including furniture, oriental rugs, books, a clock, portfolios of his early artwork as a student, letters from his friends, family and students, and various knick-knacks he collected through the years.



This photograph depicts Hobson Pittman painting (c. 1945). The palette he's using and the easel behind him are exhibited in the Hobson Pittman Studio on the second floor. The photo is from the Blount-Bridgers House Hobson Pittman archives (photographer unknown).



This photograph depicts Hobson Pittman discussing the annual exhibition of student artwork at the Pennsylvania State University with a group of advanced painters in 1960. The photo is from the Blount-Bridgers House Hobson Pittman archives (photographer unknown).