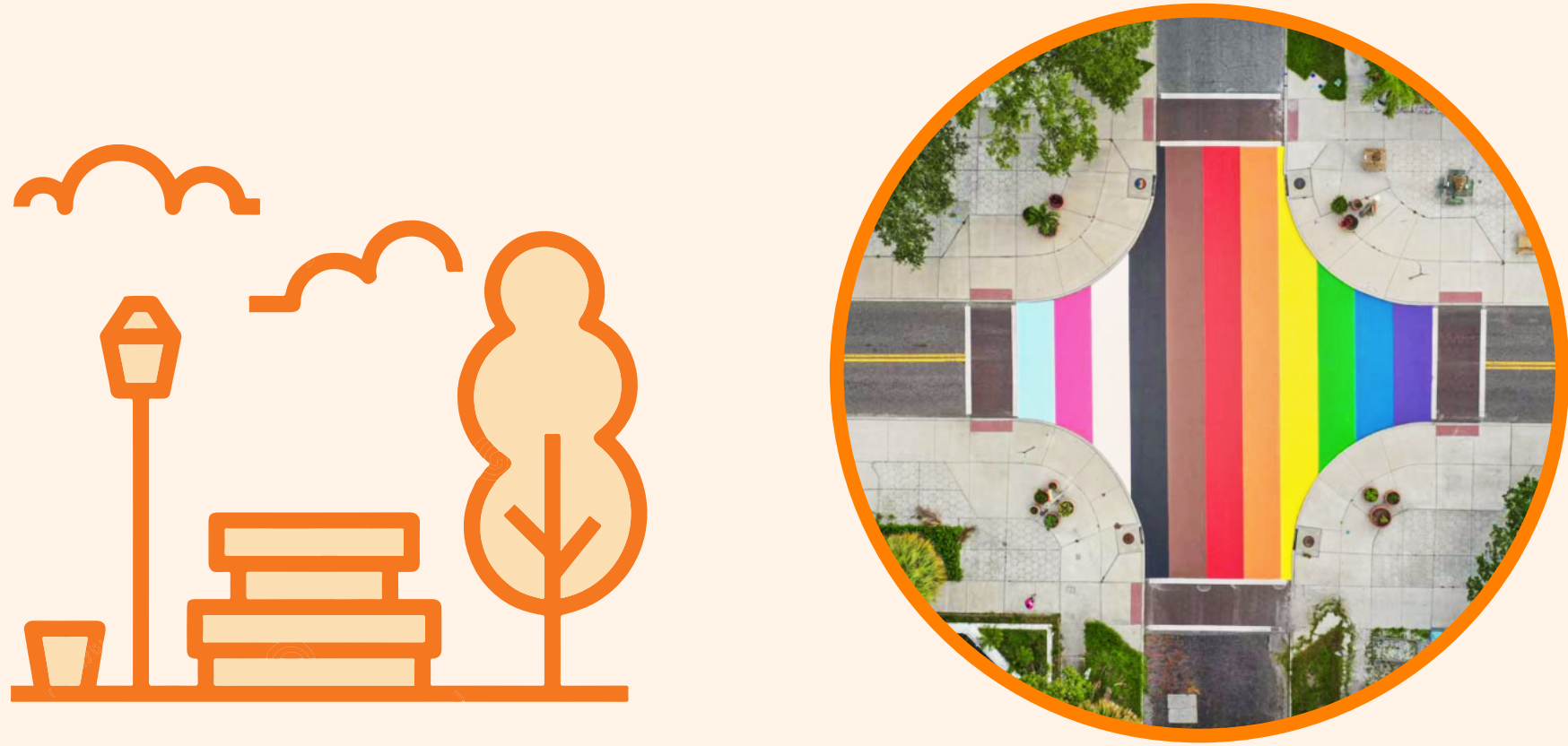


# MASTER PLAN GUIDING THEMES

THEMES

## PUBLIC REALM

can be described as the **public space between buildings**. This includes, but is not limited to, sidewalks and street furniture, plazas, parks, and publicly programmed spaces such as sports fields, dog parks, etc.)



## URBAN FORM

can be described as the **District's physical form and built character** and is composed primarily of the buildings within the street network.



## CONNECTIVITY & SAFETY

focuses on the **integration of different modes of circulation** (pedestrians, bikes, scooters, buses, cars) and the connectivity they provide to and from the district. Safety is centered around conflict points between modes.



## DIVERSITY & EQUITY

focuses on **inclusive public spaces and amenities**, such as public realm improvements, wayfinding for people with impairments, community spaces for minority populations, and housing opportunities for a range of incomes.



## ECON. DEVELOPMENT & REGULATION

includes the **type of commercial and real estate activities** the district has now and may have in the future, and the **legislative framework** within which economic development takes place.



## RESILIENCY & SUSTAINABILITY

strategies include improved storm water management, energy saving, street tree coverage for relief from the heat and better air quality.



YOUR THOUGHTS

## DO YOU AGREE WITH THESE IDEAS?

Please place your dot to show how you feel about each of these guiding themes.

THEME	Yes	Neutral	No	ADDITIONAL THOUGHTS? <i>Write them on a post-it note and place it here.</i>
PUBLIC REALM				PLACE STICKERS HERE
URBAN FORM				PLACE STICKERS HERE
CONNECTIVITY & SAFETY				PLACE STICKERS HERE
DIVERSITY & EQUITY				PLACE STICKERS HERE
ECONOMIC DEVELOPMENT & REGULATION				PLACE STICKERS HERE
RESILIENCY & SUSTAINABILITY				PLACE STICKERS HERE



YOUR THOUGHTS

WHICH PUBLIC REALM ELEMENT(S) WOULD YOU LIKE TO SEE IN THE DISTRICT?

Please place your dot to show how you feel about each of these elements.



ELEMENTS	Love it!		Neutral		Don't like
PUBLIC PARK					
PARKLETS/ POCKET PARKS					
PROGRAMMED PUBLIC SPACES (PLAYGROUND, DOG PARKS, SPORT FIELDS, ETC.)					
PEDESTRIAN AMENITIES (BENCHES, SHADE, WATER FEATURES, ETC.)					
PUBLIC ART					
DISTRICT BRANDING					



YOUR THOUGHTS

WHICH URBAN FORM ELEMENT(S) WOULD YOU LIKE TO SEE IN THE DISTRICT?

Please place your dot to show how you feel about each of these elements.



ONE/TWO STORY  
COMMERCIAL  
BUILDINGS



PRESERVATION  
OF EXISTING  
BUILDINGS



ADAPTIVE  
REUSE



INFILL  
DEVELOPMENT



SMALL SCALE  
MIXED-USE  
DEVELOPMENT



LARGE SCALE  
MIXED-USE  
DEVELOPMENT

ELEMENTS	Love it!		Neutral		Don't like
ONE/TWO STORY COMMERCIAL BUILDINGS					
PRESERVATION OF EXISTING BUILDINGS					
ADAPTIVE REUSE					
INFILL DEVELOPMENT					
SMALL SCALE MIXED-USE DEVELOPMENT					
LARGE SCALE MIXED-USE DEVELOPMENT					



YOUR THOUGHTS

WHICH CONNECTIVITY & SAFETY ELEMENT(S) WOULD YOU LIKE TO SEE IN THE DISTRICT?

Please place your dot to show how you feel about each of these elements.

ELEMENTS	Love it!		Neutral		Don't like
 ENHANCED PEDESTRIAN CROSSINGS					
 WIDER, MORE ACCESSIBLE SIDEWALKS					
 PEDESTRIAN ONLY STREET					
 LIGHTING					
 ACCESSIBILITY & CONNECTIVITY TO TRANSIT					
 MICRO TRANSIT (E-SCOOTER & BIKE SHARE)					
 PARKING CONTROL TECHNOLOGY					



YOUR THOUGHTS

WHICH DIVERSITY & EQUITY ELEMENT(S) WOULD YOU LIKE TO SEE IN THE DISTRICT?

Please place your dot to show how you feel about each of these elements.



COMMUNITY CENTERS  
(LGBTQ+ CENTER, VETERAN CENTER ETC.)



AFFORDABLE HOUSING



WAYFINDING



ACCESSIBILITY AMENITIES



INCLUSIVE PUBLIC SPACE



ENGAGEMENT PROGRAM

ELEMENTS	Love it!		Neutral		Don't like
COMMUNITY CENTERS (LGBTQ+ CENTER, VETERAN CENTER ETC.)					
AFFORDABLE HOUSING					
WAYFINDING					
ACCESSIBILITY AMENITIES					
INCLUSIVE PUBLIC SPACE					
ENGAGEMENT PROGRAM					



YOUR THOUGHTS

WHICH ECONOMIC DEVELOPMENT & REGULATION ELEMENT(S) WOULD YOU LIKE TO SEE IN THE DISTRICT?

Please place your dot to show how you feel about each of these elements.



ESSENTIAL BUSINESS  
(GROCERY STORES, PHARMACIES, ETC.)



SERVICES  
(CHILDCARE, LIBRARIES, PUBLIC POOL, ETC.)



DINING & RETAIL



ENTERTAINMENT FACILITIES  
(MUSIC VENUES, MOVIE THEATERS, ETC)



POP-UP MARKET



OFFICE/SHARED WORKSPACES

ELEMENTS	Love it!		Neutral		Don't like
ESSENTIAL BUSINESS (GROCERY STORES, PHARMACIES, ETC.)					
SERVICES (CHILDCARE, LIBRARIES, PUBLIC POOL, ETC.)					
DINING & RETAIL					
ENTERTAINMENT FACILITIES (MUSIC VENUES, MOVIE THEATERS, ETC)					
POP-UP MARKET					
OFFICE/SHARED WORKSPACES					



# CAST YOUR VOTE! RESILIENCY & SUSTAINABILITY

YOUR THOUGHTS

## WHICH RESILIENCY & SUSTAINABILITY ELEMENT(S) WOULD YOU LIKE TO SEE IN THE DISTRICT?

Please place your dot to show how you feel about each of these elements.



STREET TREES



STORMWATER MANAGEMENT



IMPERVIOUS SURFACES  
(PAVEMENTS, SIDEWALKS, ETC)



URBAN FARM/  
COMMUNITY GARDEN



SIDEWALK GARDEN/  
LANDSCAPE



PUBLIC RECYCLING AMENITIES

ELEMENTS	Love it!		Neutral		Don't like
STREET TREES					
STORMWATER MANAGEMENT					
IMPERVIOUS SURFACES (PAVEMENTS, SIDEWALKS, ETC)					
URBAN FARM/ COMMUNITY GARDEN					
SIDEWALK GARDEN/ LANDSCAPE					
PUBLIC RECYCLING AMENITIES					