

## **ST. PETERSBURG CITY COUNCIL**

### **Consent Agenda**

Meeting of September 5, 2019

**TO:** The Honorable Charles Gerdes, Chair and Members of City Council

**SUBJECT:** A Resolution authorizing the Mayor or his designee to execute Amendment No. 1 to Task Order No. 16-03-CHE/STB(C) ("Task Order") to the architect/engineering agreement between the City of St. Petersburg, Florida and CH2M HILL Engineers, Inc. ("A/E") dated July 19, 2016, for A/E to provide additional design and plans of a signalized intersection with traffic mast arms at Fountain Parkway and Echelon City Center/Baycreek Lane related to the Carillon Center Roundabouts Project in an amount not to exceed \$58,481.17; providing that the total Task Order, as amended, shall not exceed \$202,888.74; approving a supplemental appropriation in the amount of \$69,550 from the unappropriated balance of the Multimodal Impact Fees Capital Improvement Fund (3071) to the Carillon Center Roundabouts Project (17010) to provide the necessary funding for this Task Order Amendment and other project related costs; and providing an effective date. (ECID Project No. 18122-112, Oracle No. 17010)

**EXPLANATION:** On May 4, 2017, City Council approved a development agreement with Echelon, LLC. including provisions for the design and construction of these transportation improvements. The term of the Agreement is 15 years and includes a mixed-use project with:

- 1,505 residential units,
- 172,000 square feet of retail use,
- 480,500 square feet of office use and
- 120 hotel rooms.

Traffic levels continue to increase in Carillon due to the expansion of Raymond James and other companies which will add additional trips to the intersections of Carillon Parkway intersection with Tower Place/Echelon City Center; and Fountain Parkway intersection with Echelon City Center/Baycreek Lane. These intersections exhibit geometric challenges which affect their safety and efficiency. They exhibit geometric challenges as they are exceptionally large compared to a normal intersection and have substantial offsets between the intersecting roadways. Based both on the current job growth and the new development of the Carillon City Center mixed-use development and the geometric challenges associated with the unsignalized intersections, roundabouts were considered for each intersection to provide safety and operational benefits.

On July 19, 2016, the City of St. Petersburg, Florida ("City") and CH2M HILL Engineers, Inc. ("A/E") entered into an architect/engineering agreement for A/E to provide miscellaneous professional services for Stormwater Management, Transportation and Bridge Improvement Projects.

On November 1, 2018, City Council approved Task Order No. 16-03-CHE/STB in the amount of \$144,407.57 which provided for professional engineering services including but not limited to review of existing data, field observations, conceptual layout rendering for traffic analysis, and development of roadway construction plans to convert the existing intersections (Carillon Parkway intersection with Tower Place/Echelon City Center; and Fountain Parkway intersection with Echelon City Center/Baycreek Lane) to roundabouts, and meetings with the Business District.

The conceptual layout, traffic analysis, and discussions with the Business District's developer resulted in a preferred alternative involving a roundabout at Tower Place/Echelon City Center and signalization at Echelon City Center/Baycreek Lane. It was determined that signalization at the second intersection would provide all of the desired benefits at a lower construction cost.

Amendment No. 1 to Task Order No. 16-03-CHE/STB(C) is recommended in the amount of \$58,481.17 to provide professional engineering services including but not limited to the design of a signalized intersection with traffic mast arms at the Fountain Parkway intersection with Echelon City Center/Baycreek Lane as the result of recommended alternatives developed during the design development. The A/E will design the Fountain Parkway intersection with Echelon City Center/Baycreek Lane to be a signalized intersection instead of a roundabout. The Carillon Parkway intersection with Tower Place/Echelon City Center will remain a roundabout.

Task Order No. 16-03-CHE/STB and Amendment No. 1 include the following phases and associated not to exceed costs respectively:

	Data Collection and Traffic Analysis	\$ 66,206.66	(Approved)
	Design Phase Services	\$ 67,900.91	(Approved)
	Allowance	\$ 10,000.00	(Approved)
	Expenses	\$ 300.00	(Approved)
Amendment No. 1	Design and Plans Production - Revised Services	\$ 58,481.17	(New)
	<b>Total</b>	<b>\$202,888.74</b>	

A supplemental appropriation is needed to fund this Task Order Amendment and other project-related costs such as engineering services, contingency, and other soft costs in the amount of \$11,068, for a total appropriation of \$69,550.

A/E services during the construction phase will be provided to Council for approval as an Amendment to this Task Order.

Costs for constructing the improvements will be provided to council for approval at a future date. The City and Echelon are having conversations about the possibility of Echelon performing the construction.

**RECOMMENDATION:** Administration recommends authorizing the Mayor or his designee to execute Amendment No. 1 to Task Order No. 16-03-CHE/STB(C) ("Task Order") to the architect/engineering agreement between the City of St. Petersburg, Florida and CH2M HILL Engineers, Inc. ("A/E") dated July 19, 2016, for A/E to provide additional design and plans of a signalized intersection with traffic mast arms at Fountain Parkway and Echelon City Center/Baycreek Lane related to the Carillon Center Roundabouts Project in an amount not to exceed \$58,481.17; providing that the total Task Order, as amended, shall not exceed \$202,888.74; approving a supplemental appropriation in the amount of \$69,550 from the unappropriated balance of the Multimodal Impact Fees Capital Improvement Fund (3071) to the Carillon Center Roundabouts Project (17010) to provide the necessary funding for this Task Order

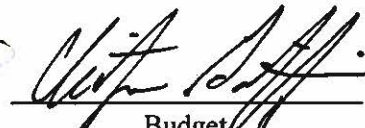
Amendment and other project related costs; and providing an effective date. (ECID Project No. 18122-112, Oracle No. 17010).

**COST/FUNDING/ASSESSMENT INFORMATION:** Funding for the additional design services for this project will be available following the approval of a supplemental appropriation in the amount of \$69,550 from the unappropriated balance of the Multimodal Impact Fees Capital Improvement Fund (3071) to the Carillon Center Roundabouts Project (17010).

**ATTACHMENTS:** Resolution  
Task Order No. 16-03-CHE/STB(C)  
Map

**APPROVALS:**

  
Administrative

  
Budget

RESOLUTION 2019-\_\_\_\_\_

A RESOLUTION AUTHORIZING THE MAYOR OR HIS DESIGNEE TO EXECUTE AMENDMENT NO. 1 TO TASK ORDER NO. 16-03-CHE/STB(C) ("TASK ORDER") TO THE ARCHITECT/ENGINEERING AGREEMENT BETWEEN THE CITY OF ST. PETERSBURG, FLORIDA AND CH2M HILL ENGINEERS, INC. ("A/E") DATED JULY 19, 2016, FOR A/E TO PROVIDE ADDITIONAL DESIGN AND PLANS OF A SIGNALIZED INTERSECTION WITH TRAFFIC MAST ARMS AT FOUNTAIN PARKWAY AND ECHELON CITY CENTER/BAYCREEK LANE RELATED TO THE CARILLON CENTER ROUNDABOUTS PROJECT IN AN AMOUNT NOT TO EXCEED \$58,481.17; PROVIDING THAT THE TOTAL TASK ORDER, AS AMENDED, SHALL NOT EXCEED \$202,888.74; APPROVING A SUPPLEMENTAL APPROPRIATION IN THE AMOUNT OF \$69,550 FROM THE UNAPPROPRIATED BALANCE OF THE MULTIMODAL IMPACT FEES CAPITAL IMPROVEMENT FUND (3071) TO THE CARILLON CENTER ROUNDABOUTS PROJECT (17010) TO PROVIDE THE NECESSARY FUNDING FOR THIS TASK ORDER AMENDMENT AND OTHER PROJECT RELATED COSTS; AND PROVIDING AN EFFECTIVE DATE. (ECID PROJECT NO. 18122-112, ORACLE NO. 17010)

WHEREAS, the City of St Petersburg, Florida and CH2M HILL Engineers, Inc. ("A/E") entered into an architect/engineering agreement on July 19, 2016 for A/E to provide miscellaneous professional services for Stormwater Management, Transportation and Bridge Improvement Projects; and

WHEREAS, on November 1, 2018, City Council approved Task Order No. 16-03-CHE/STB(C) ("Task Order") in an amount not to exceed \$144,407.57 for A/E to provide professional engineering services including but not limited to review of existing data, field observations, conceptual layout rendering for traffic analysis, and development of roadway construction plans for the Carillon Center Roundabouts Project ("Project"); and

WHEREAS, Administration desires to issue Amendment No. 1 to the Task Order for A/E to provide additional design and plans of a signalized intersection with traffic mast arms at the Fountain Parkway intersection with Echelon City Center/Baycreek Lane in an amount not to exceed \$58,481.17.

NOW, THEREFORE, BE IT RESOLVED by the City Council of the City of St. Petersburg, Florida, that the Mayor or his designee is hereby authorized to execute Amendment No. 1 to Task Order No. 16-03-CHE/STB(C) to the architect/engineering agreement between the City of St. Petersburg, Florida and CH2M HILL Engineers, Inc. ("A/E") dated July 19, 2016 for

A/E to provide additional design and plans of a signalized intersection with traffic mast arms at Fountain Parkway and Echelon City Center/Baycreek Lane related to the Carillon Center Roundabouts Project in an amount not to exceed \$58,481.17.

BE IT FURTHER RESOLVED that the total Task Order, as amended, shall not exceed \$202,888.74.

BE IT FURTHER RESOLVED that there is hereby approved from the unappropriated balance of the Multimodal Impact Fees Capital Improvement Fund (3071) the following supplemental appropriation for FY19:

<u>Multimodal Impact Fees Capital Improvement Fund (3071)</u>	
Carillon Center Roundabouts Project (17010)	\$69,550

This resolution shall become effective immediately upon its adoption.

Approved by:

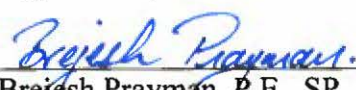


Legal Department

By: (City Attorney or Designee)

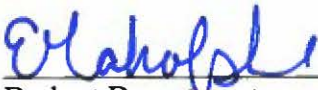
00466680.docx

Approved by:



Brejesh Prayman, P.E., SP, ENV

Engineering & Capital Improvements Director




Budget Department

**MEMORANDUM**

**CITY OF ST. PETERSBURG**

**Engineering and Capital Improvements Department**

**TO:** The Honorable Charles Gerdes, Chair, and City Councilmembers

**FROM:** Brejesh Prayman, P.E., ENV SP, Director   
Engineering & Capital Improvements Department

**RE:** Consultant Selection Information  
Firm: CH2M HILL Engineers, Inc.  
Amendment No. 1 to Task Order No. 16-03-CHE/STB(C) in the amount of \$58,481.17

---

This memorandum is to provide information pursuant to City Council Policy and Procedures Manual, Chapter 3, Section I(F.) for agenda package information.

1. Summary of Reasons for Selection

The project involves design, permitting and bidding of roadway/intersection improvements at two existing Intersections in the Carillion Parkway Intersection with Tower Place/Echelon City Center and the Fountain Parkway Intersection with Echelon City Center/Baycreek Lane.

CH2M HILL Engineers, Inc. has satisfactorily completed similar work for other Agencies, and is familiar with the Federal, State and City Standards.

CH2M HILL Engineers, Inc. has significant experience in the design, permitting and construction phase activities of roadway infrastructure. This work is a continuation of previously authorized services.

This is the first Amendment to the third Task Order issued under the 2016 Master Agreement.

2. Transaction Report listing current work – See Attachment A

## ATTACHMENT A

### Transaction Report for

CH2M HILL Engineers, Inc.

Miscellaneous Professional Services for Stormwater Management, Transportation and Bridge Improvement Projects

A/E Agreement Effective - July 19, 2016

A/E Agreement Expiration - July 13, 2020

Task Order No.	Project No.	Project Title	NTP Issued	Authorized Amount
1	16057-129	SWFWMD Application Assistance	08/29/16	18,663.75
			11/20/17	79,116.27
2	17044-120	Water Quality Monitoring Amend. No. 1 - Tasks 3 - 8	11/01/16	129,000.00
3	18122-112	Carillon Center Roundabouts - Phase I - Data Collection and Traffic Analysis	06/12/17	189,912.21
		Amendment No. 1	04/26/19	79,775.78
			Pending	
			Total:	496,468.01



AMENDMENT NO. 1 TO TASK ORDER NO. 16-03-CHE/STB(C)  
CARILLON CENTER ROUNDABOUTS  
MISCELLANEOUS PROFESSIONAL SERVICES FOR STORMWATER MANAGEMENT,  
TRANSPORTATION AND BRIDGE IMPROVEMENT PROJECTS  
CITY PROJECT NO. 18122-112

This Amendment No. 1 to Task Order No. 16-03-CHE/STB(C) is made and entered into this \_\_\_\_\_ day of \_\_\_\_\_, 201\_\_\_\_, pursuant to the ARCHITECT/ENGINEERING AGREEMENT FOR MISCELLANEOUS PROFESSIONAL SERVICES FOR STORMWATER MANAGEMENT, TRANSPORTATION AND BRIDGE PROJECTS dated July 19, 2016 ("Agreement") between CH2M HILL Engineers, Inc. ("A/E"), and the City of St. Petersburg, Florida ("City"), and upon execution shall become a part of the Agreement.

**I. DESCRIPTION OF PROJECT**

The initial Task Order included the following Phase 1 and Phase 2 services: review of existing data from the City, field observation, conceptual layout rendering for traffic analysis, and development of construction horizontal and vertical for conversion of two at-grade, stop-controlled intersections (Carillon Parkway intersection with Tower Place/Echelon City Center, and Fountain Parkway intersection with Echelon City Center/Baycreek Lane) to roundabouts.

As a result of recommended alternatives developed during Phase 1 services, and when the A/E is authorized to proceed with Phase 2 services, the A/E will design the Fountain Parkway intersection with Echelon City Center/Baycreek Lane to be a signalized intersection instead of a roundabout. The Carillon Parkway intersection with Tower Place/Echelon City Center will remain a roundabout.

**II. SCOPE OF SERVICES**

***Phase 2. Design and Plans Production - Revised Services***

- Roadway
  - Conceptual plans developed for the roundabout and traffic signal during Phase 1 will be optimized. Optimization process for the roundabout will include analysis of fast path, design vehicle turning path, and sight lines.
  - Horizontal and vertical geometry of the optimized designs will be developed (1 alternative for each location), resulting in a contoured grading plan (roundabout) and roadway plan sheet (signal).
- Drainage
  - Replace any impacted drainage structures in-kind.
- Signalization
  - Design of 2 signal poles, 2 foundations, and 4 mast arms. Mast arm design will be special design, matching the style of mast arms designed in City of St. Petersburg project number 17074-112 (dated 9/18/18).



- Signalization will include loops, consistent with City of St. Petersburg project number 17074-112.
  - Signal analysis will include system timings, phasing, pole clearance and elevation, structural requirements based on wind speed zoning, cabinet requirements, and conduit analysis.
- Structural
  - Structural calculations for 2 signal poles, 2 foundations, and 4 mast arms will be developed. Structural design will include determination of loading conditions and combinations, fatigue analysis, strength and service design, bolted and welded connection design, structural design of drilled shaft and cap, geotechnical design of drilled shaft, anchor bolt design, signal and sign connection design, and detailing and drafting of structure and connections.
- Utilities
  - Incorporate minor markups to the Utility Adjustment Sheets as provided by the Utility Agency Owners (UAOs) to the City.
  - Subsurface Utility Investigation/Excavation (SUE) will be provided as described by the proposal included in Appendix B.
- Geotechnical
  - Geotechnical services will be provided as described by the proposal included in Appendix C.  
 In soils, foundation, groundwater, and other subsurface investigations, the actual characteristics may vary significantly between successive test points and sample intervals and at locations other than where observations, exploration, and investigations have been made. Because of the inherent uncertainties in subsurface evaluations, changed or unanticipated underground conditions may occur that could affect total project cost and/or execution. These conditions and cost/execution effects are not the responsibility of A/E.
- Signing and Pavement Marking
  - Develop a signing and pavement marking plan for the construction plans.
- Environmental/Permitting
  - A permit exemption is expected for this project. Permit exemption letter will be prepared by the A/E. Submittal of permit and associated fees will be the responsibility of the City.
- Construction Plans
  - Develop one set of 11" x 17" construction plans that will include one (1) roundabout and one (1) signalized intersection. Submittals will include 25%, 90%, and final plans, if necessary: 40 scale sheets.
- Estimates
  - Develop cost estimates for 25%, 90%, and Final submittals. A/E shall prepare the Engineer's Estimate of Probable Cost and provide with the 25% submittal. The Engineer's Estimate of Probable Construction Cost will be adjusted at the 90% milestone. All estimates of probable construction cost used for the project will be developed using the appropriate estimate class for completion of the design and consistent with Industry Standards,

Association for the Advancement of Cost Engineering adjusted for local site conditions.

- In providing opinions of cost, financial analyses, economic feasibility projections, and schedules for the Project, A/E has no control over cost or price of labor and materials; unknown or latent conditions of existing equipment or structures that may affect operation or maintenance costs; competitive bidding procedures and market conditions; time or quality of performance by operating personnel or third parties; and other economic and operational factors that may materially affect the ultimate Project cost or schedule. Therefore, A/E makes no warranty that City's actual Project costs, financial aspects, economic feasibility, or schedules will not vary from A/E's opinions, analyses, projections, or estimates.
- Specifications
  - The A/E will not provide specifications to the City for this project. City will provide general and technical specifications, as well as standard details for the construction plans. The A/E will assist the City in development of pay item descriptions for pay items that are not in the City's pay item library.
- Field Reviews
  - The A/E will make two (2) trips maximum to the project site to obtain data for the project.
- Project Management
  - Contract and manage any necessary subconsultant project work
  - Invoices:
    - Prepare and submit monthly invoicing and payment requests.
  - Meetings
    - Four (4) meetings maximum with City staff:
      - One (1) meeting with the City and business owners
      - One (1) meeting after 90% submittal
      - One (1) meeting with the City to plan for presentation with business owners
      - One (1) pre-bid meeting
  - Quality Control
    - A/E will continue to follow the project quality management plan developed in Phase 1.
  - Bid Assistance
    - The A/E will assist the City in qualifying a maximum of three bidders. This effort will include reviewing the contractor's response to bid question no. 12 (contractor qualifications) and making phone calls, if necessary, to verify experience/ qualifications.

***Tasks or activities that are not included in the scope of services:***

- Scope of services assumes drainage structures impacted by the design will be replaced in-kind and no drainage calculations will be necessary.
- Scope of services assumes existing intersections as-built plans and record drawings will be provided by the City to the A/E and that the full depth pavement design in the construction plans will match existing pavement design depths reflected in the as-

builds or the pavement design depths provided in City of St. Petersburg Standard S20-4 (Heavy Duty Roadway Detail), whichever depth is greater. Record drawings furnished by others, may not always represent the exact location, type of various components, or exact manner in which the project was finally constructed. A/E is not responsible for any errors or omissions in the information from others that is incorporated into the record drawings

- Scope of services assumes a permit exemption will be allowed by the water management district for the proposed intersection improvements. The permit exemption letter will be prepared by the A/E. Any permits and associated fees will be the responsibility of the City.
- Work zone traffic control will be the responsibility of the contractor.
- Landscaping services are not anticipated as part of this contract. The center of the roundabout will consist of grass only.
- All utility activities other than incorporating markups provided by the UAOs to the City in response to the City's utility coordination and the SUE services described in Appendix B will be provided by the City.
- Quantity sheets will not be included in construction plans.
- Development of any application and payment of any associated fee for approval of RRFBs from the Federal Highway Administration (FHWA) are the responsibility of the City.
- Monthly progress reports will not be prepared to accompany the invoices.
- Design of Advanced Transportation Management System (ATMS) or Portable Traffic Monitoring (PTMS).
- Relocation/design of light poles. If light poles are impacted by the design, a note will be added to the construction plans indicating they are to be salvaged by the contractor and stored by a third party and that any relocation required will be performed by others.
- Signal interconnection.
- Traffic Signal Operations report.

### **III. SCHEDULE**

Work under this Task Order shall begin no later than 10 days from Notice to Proceed.

Phase 2 will be completed within four (4) months of notice to proceed for Phase 2 services.

### **IV. A/E'S RESPONSIBILITIES**

The A/E will perform the services outlined in Section II, Scope of Services.

### **V. CITY'S RESPONSIBILITIES**

- Provide full topographic survey and right-of-way lines for roundabout and intersection design efforts. Based on information provided during Phase 1 of the scope of services, the following files will be used as the basis of Phase 2 design:

- 18122-112\_Carillon Park\_Additional Survey\_20190322.dwg (*provided by the City on 4/2/19*)
- CGP-BASE-REV1.dwg (*provided by Wade Trim on 4/22/19*)
- CGP-BASE-ECN2007.dwg (*provided by Wade Trim on 4/22/19*)
- CGP-BASE-ECN2007.dwg (*provided by Wade Trim on 4/25/19*)
- CSP-BASE-REV1.dwg (*provided by Wade Trim on 4/22/19*)
- CSP-MAIN ST-ECN2007.dwg (*provided by Wade Trim on 4/25/19*)
- VSP-BASE-ECN2007\_2018.12.14.dwg (*provided by Wade Trim on 12/14/18*)
- VSP-BASE-SURFACE-ECN2007\_2018.12.14.dwg (*provided by Wade Trim on 12/14/18*)

It is the responsibility of the City to notify the A/E of any known changes to site conditions during design. The City is responsible for providing any additional survey or right-of-way information necessary for the A/E to complete the design. Any discrepancies between the files listed above shall be resolved by the City.

- Any updates to existing easements that are necessary to complete construction are the responsibility of the City.
- Provide GIS files for utilities, including but not limited to water, sewer, and stormwater.
- Review and comment on the A/E deliverables within fourteen (14) calendar days of all submittals (includes City comments or Florida Department of Transportation comments). If comments are not provided to the A/E within this timeframe, it will be assumed the submittal is accepted by all parties without comment.
- Attend and participate in project meetings, as necessary.
- Submittal of permits and their associated fees will be the responsibility of the City.
- The City will send the 25% and 90% drawings to UAOs and request for markups. The City will send markups to the A/E to incorporate with the design drawings.
- Development of specifications, technical specifications, unit of measure, bid form, and quantities.
- If this Agreement includes the furnishing of any services during the construction phase of the project, the following terms will apply: (a) If A/E is called upon to observe the work of City's construction contractor(s) for the detection of defects or deficiencies in such work, A/E will not bear any responsibility or liability for such defects or deficiencies or for the failure to so detect. A/E shall not make inspections or reviews of the safety programs or procedures of the construction contractor(s), and shall not review their work for the purpose of ensuring their compliance with safety standards. (b) If A/E is called upon to review submittals from construction contractors, A/E shall review and approve or take other appropriate action upon construction contractor(s)' submittals such as shop drawings, product data and samples, but only for the limited purpose of checking for conformance with information given and the design concept expressed in the contract documents. A/E' action shall be taken with such reasonable promptness as to cause no delay in the work while allowing sufficient time in A/E' professional judgment to permit adequate review. Review of such submittals will not be conducted for the purpose of determining the accuracy and completeness of other details such as dimensions and quantities. (c) A/E shall not assume any responsibility or liability for performance of the construction services, or for the safety of persons and property during construction, or for compliance with federal, state and local statutes, rules,

regulations and codes applicable to the conduct of the construction services. A/E shall have no influence over the construction means, methods, techniques, sequences or procedures. Construction safety shall remain the sole responsibility of the construction contractor(s).

## **VI. DELIVERABLES**

All deliverables will be developed in Portable Document Format (PDF). Construction plans will be plotted on 11" x 17" sheets. Submittals will include:

- 25% - Plans and Cost Estimate (delivered via email).
- 90% - Plans and Cost Estimate (delivered via email).
- 100% - Plans and Cost Estimate (delivered via email).

Anticipated sheets to be included in the construction plan set are as follows:

- Cover Sheet.
- Key Sheet.
- General Notes.
- Existing Conditions Sheets.
- Proposed Plan Sheets.
- Drainage Sheets.
- Roundabout Detail Sheet (contour/grading details).
- Signing and Pavement Marking Sheets.
- Signalization Sheets.

The A/E will respond to one (1) set of comments received from the City for each of the 25% and 90% submittals. The comment responses will be delivered with the subsequent submittal package.

## **VII. A/E'S COMPENSATION**

The A/E was authorized the lump sum amount of \$66,356.66 under the initial Task Order for Phase 1 services. (Phase 2 services in the amount of \$68,050.91 and a separate Allowance of \$10,000 were not authorized).

For this Amendment No. 1, the City shall compensate the A/E the additional lump sum amount of **\$58,481.17** for revisions to the Phase 2 scope, per Attachment 1 to Appendix A. This includes a reallocation of A/E staff hours used to formulate the initial Phase 2 fee of \$68,050.91. The total Phase 2 fee is increased to \$126,532.08.

\$10,000.00 of the Allowance remains for additional services not identified in the Scope of Services. Additional services may be performed only upon receipt of prior written authorization from the City and such authorization shall set forth the additional services to be provided by the A/E. The cost for any additional services shall not exceed the amount of the allowance set forth in this Amendment No. 1 to the Task Order.

The total Task Order amount including Amendment No. 1 shall not exceed \$202,884.74.

**VIII. PROJECT TEAM**

Prime Consultant - CH2M HILL Engineers, Inc.

Subconsultants - AREHNA Engineering, Inc.  
Stantec Consulting Services, Inc.

**IX. MISCELLANEOUS**

In the event of a conflict between this Amendment No. 1 to Task Order No. 16-03-CHE/STB(C) and the Agreement, the Agreement shall prevail.

IN WITNESS WHEREOF the Parties have caused this Amendment No. 1 to Task Order No. 16-03-CHE/STB(C) to be executed by their duly authorized representatives on the day and date first above written.

**ATTEST**

**CITY OF ST. PETERSBURG, FLORIDA**

By: \_\_\_\_\_  
Chandrasasa Srinivasa  
City Clerk

By: \_\_\_\_\_  
Brejesh Prayman, P.E., ENV SP, Director  
Engineering & Capital Improvements

(SEAL)

DATE: \_\_\_\_\_

APPROVED AS TO FORM FOR CONSISTENCY  
WITH THE STANDARD TASK ORDER.  
NO OPINION OR APPROVAL OF THE SCOPE  
OF SERVICES IS BEING RENDERED BY  
THE CITY ATTORNEY'S OFFICE

By: \_\_\_\_\_  
City Attorney (Designee)

\_\_\_\_\_  
CH2M HILL Engineers, Inc.  
(Company Name)

**WITNESSES:**

By: \_\_\_\_\_  
(Signature)  
KENNETH M. WATSON MANAGER OF PROJECTS  
(Printed Name and Title)

Date: 6/26/2019

By: Valerie L. Arnold  
(Signature)

Valerie L. Arnold  
(Printed Name)

By: Noreen Gray  
(Signature)

NOREEN GRAY  
(Printed Name)



**ATTACHMENT 1 to APPENDIX A**  
**Work Task Breakdown**  
**Carillon Center Roundabouts**  
**Project No. 18122-112**

**I. Manpower Estimate: All Tasks**

Direct Labor Rates Classifications:		Engineer/Scientist/ Specialist 5	Engineer/Scientist/ Specialist 6	Engineer/Scientist/ Specialist 2	Engineer/Scientist/ Specialist 7	Engineer/Scientist/ Specialist 6	Engineer/Scientist/ Specialist 5	Engineer/Scientist/ Specialist 2	Engineer/Scientist/ Specialist 5	Engineer/Scientist/ Specialist 5	Engineer/Scientist/ Specialist 2	Office Administrative	Office Administrative	Engineer/Scientist/ Specialist 5	Total Hours	Labor Cost
		Senior Traffic Engineer (HC)	Senior Traffic Engineer (TK)	Traffic and Safety Designer (NP)	Senior Roadway Engineer (HC)	Principal (KW)	Project Manager (CP)	Roadway Designer (DH)	Quality Control Roadway (KB)	Senior Drainage Engineer (CS)	Traffic Engineer (CS)	Project Controls (SB)	Project Accountant (AC)	Environmental Scientist (RG)		
Direct Salary		\$ 64.90	\$ 73.67	\$ 34.86	\$ 86.07	\$ 71.30	\$ 58.28	\$ 38.11	\$ 55.55	\$ 52.24	\$ 38.46	\$ 39.11	\$ 31.93	\$ 63.53		
Multiplier/Overhead 145.7%		\$ 94.56	\$ 107.34	\$ 50.80	\$ 125.41	\$ 103.89	\$ 84.92	\$ 55.53	\$ 80.94	\$ 76.12	\$ 56.04	\$ 56.99	\$ 46.53	\$ 92.57		
Profit 14.774%		\$ 23.56	\$ 26.75	\$ 12.66	\$ 31.25	\$ 25.89	\$ 21.16	\$ 13.84	\$ 20.17	\$ 18.97	\$ 13.97	\$ 14.20	\$ 11.60	\$ 23.07		
Billing Rates <sup>1</sup>		\$ 183.02	\$ 207.76	\$ 98.32	\$ 242.73	\$ 201.08	\$ 164.36	\$ 107.48	\$ 156.66	\$ 147.33	\$ 108.47	\$ 110.30	\$ 90.06	\$ 179.17		
PHASE															Total Hours	Labor Cost
2	ORIGINAL HOURS - Design and Plans Production	0	1	111	18	9	139	209	9	3	1	5	5	13		
2	+/- HOURS - Design and Plans Production	0	0	-111	-18	4	12	-85	4	0	0	-5	3	-7		
Total Hours:		0	1	0	0	13	151	124	13	3	1	0	8	6		

Continued - Direct Labor Rates Classifications		Engineer/Scientist/ Specialist 3	Engineer/Scientist/ Specialist 3	Engineer/Scientist/ Specialist 1	Engineer/Scientist/ Specialist 1	Engineer/Scientist/ Specialist 4	Engineer/Scientist/ Specialist 2	Engineer/Scientist/ Specialist 5	Engineer/Scientist/ Specialist 3							Total Hours	Labor Cost	
		Traffic Engineer (AJ)	Signalization Engineer (UJ)	Roadway Intern (ZZ)	Roadway Intern (JG)	Structural Engineer (CB)	Structural Designer (CM)	Structural Engineer (BN)	Structural Engineer (AM)									
	Direct Salary	\$ 43.47	\$ 35.34	\$ 19.04	\$ 18.00	\$ 61.05	\$ 37.92	\$ 72.41	\$ 39.40									
	Multiplier/Overhead 145.7%	\$ 63.34	\$ 51.50	\$ 27.75	\$ 26.23	\$ 88.95	\$ 55.25	\$ 105.51	\$ 57.41									
	Profit 14.774%	\$ 15.79	\$ 12.83	\$ 6.92	\$ 6.54	\$ 22.17	\$ 13.77	\$ 26.29	\$ 14.31									
	Billing Rates <sup>1</sup>	\$ 122.60	\$ 99.67	\$ 53.71	\$ 50.77	\$ 172.17	\$ 106.94	\$ 204.21	\$ 111.12									
PHASE																		
2	ORIGINAL HOURS - Design and Plans Production	0	0	0	0	0	0	0	0							0	\$	
2	+/- HOURS - Design and Plans Production	10	99	77	74	53	123	7	175							618	\$ 62,140.08	
Total Hours:		10	99	77	74	53	123	7	175							618	\$ 62,140.08	
REVISED TOTAL FEE																	938	\$ 107,490.30
LESS PRIOR COUNCIL APPROVAL																	523	\$ 68,050.91
TOTAL ADDITIONAL FEE REQUESTED:																	415	\$ 39,439.39

**II. Fee Calculation**

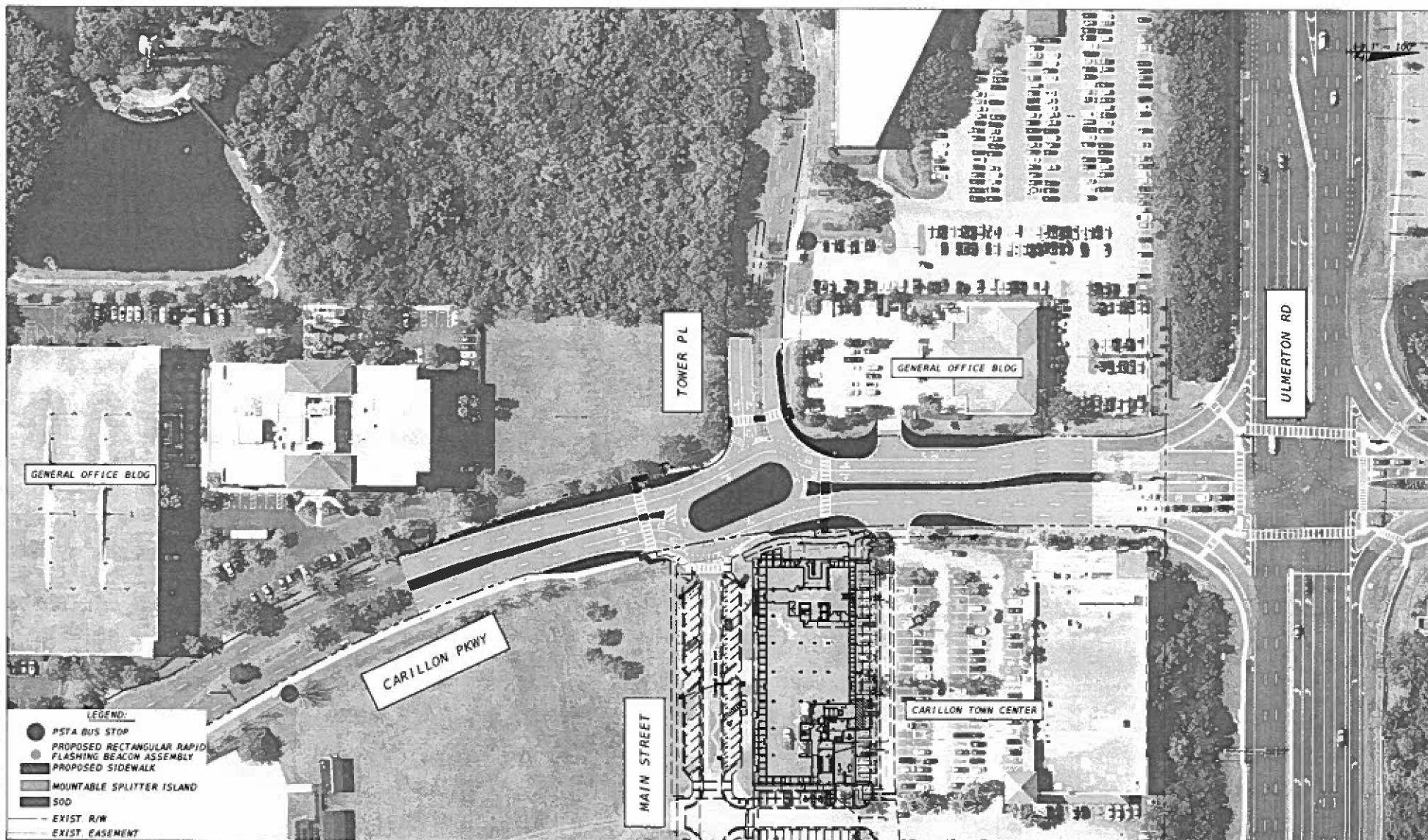
Task	Labor Cost	Expenses <sup>2</sup>	Subconsultant Services	Mark-up on Subconsultant Services <sup>3</sup>	Total Cost Without Allowance
Original	\$67,900.91	\$150.00	\$0.00	\$0.00	\$68,050.91
+/-	\$107,490.30	\$0.00	\$17,310.71	\$1,731.07	\$126,532.08
Additional	\$39,589.39	-\$150.00	\$17,310.71	\$1,731.07	\$58,481.17
Total	\$39,589.39	-\$150.00	\$17,310.71	\$1,731.07	\$58,481.17

**III. Fee Limit**

Lump Sum Cost	\$58,481.17
Allowance <sup>4</sup>	\$0.00
Total Additional Fee:	\$58,481.17

**IV. Notes:**


1. Rate x overhead + profit (per contract).
2. Includes expenses for: Mileage, reprographics, and computer charges.
3. Includes 10 percent markup of SUBCONSULTANT (per contract).
4. Allowance to be used only upon City's written authorization.



ITEM	BY	REVISIONS	NAME	DATE	REVISIONS	BY	DATE
DESIGNED BY:	CH			4/19			
DRAWN BY:	CH			4/19			
CHECKED BY:	CP			4/19			
SUPERVISED BY:	CP			4/19			

Prepared By:  
**JACOBS ENGINEERING GROUP**

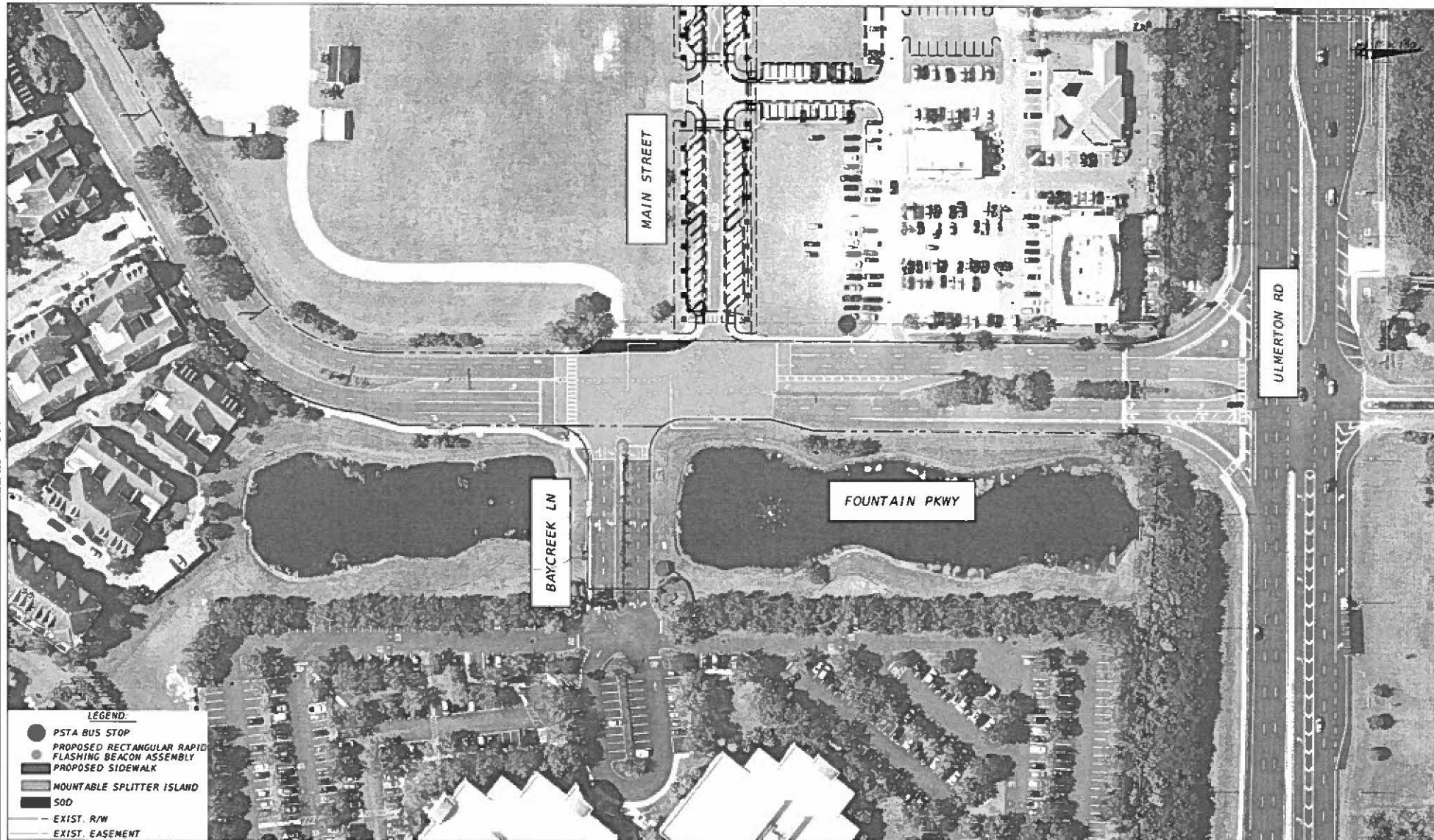
CHAD A. POLK, P.E.  
P.E. LICENSE NUMBER 68034  
JACOBS ENGINEERING GROUP INC  
201 N. FRANKLIN STREET, SUITE 1400  
TAMPA, FL 33602  
CERTIFICATE OF AUTHORIZATION: 2832

 **ENGINEERING & CAPITAL IMPROVEMENTS DEPARTMENT**  
CITY OF ST. PETERSBURG

**CARILLON ROUNDABOUTS**  
**PROJECT # 18122-112**

DATE: 04/19/19  
SCALE: SEE BAY SCALE  
DRAWING NO:  
**18122-01**

CITY PROJECT MANAGER: ZEBA MOHAMMAD



**LEGEND:**

- PSTA BUS STOP
- PROPOSED RECTANGULAR RAPID FLASHING BEACON ASSEMBLY
- ▨ PROPOSED SIDEWALK
- ▨ MOUNTABLE SPLITTER ISLAND
- SOD
- EXIST. R/W
- EXIST. EASEMENT

ITEM	BY	REMARKS

DESIGNED BY:	NAME	DATE
	CH	4/19
DRAWN BY:	NAME	DATE
	CH	4/19
CHECKED BY:	NAME	DATE
	CH	4/19
SUPERVISED BY:	NAME	DATE
	CH	4/19

REVISIONS	BY	DATE

Prepared By:  
**JACOBS ENGINEERING GROUP**

CHAD A. POLK, P.E.  
P.E. LICENSE NUMBER 68024  
JACOBS ENGINEERING GROUP INC.  
201 N. FRANKLIN STREET, SUITE 1400  
TAMPA, FL 33602  
CERTIFICATE OF AUTHORIZATION: 2822

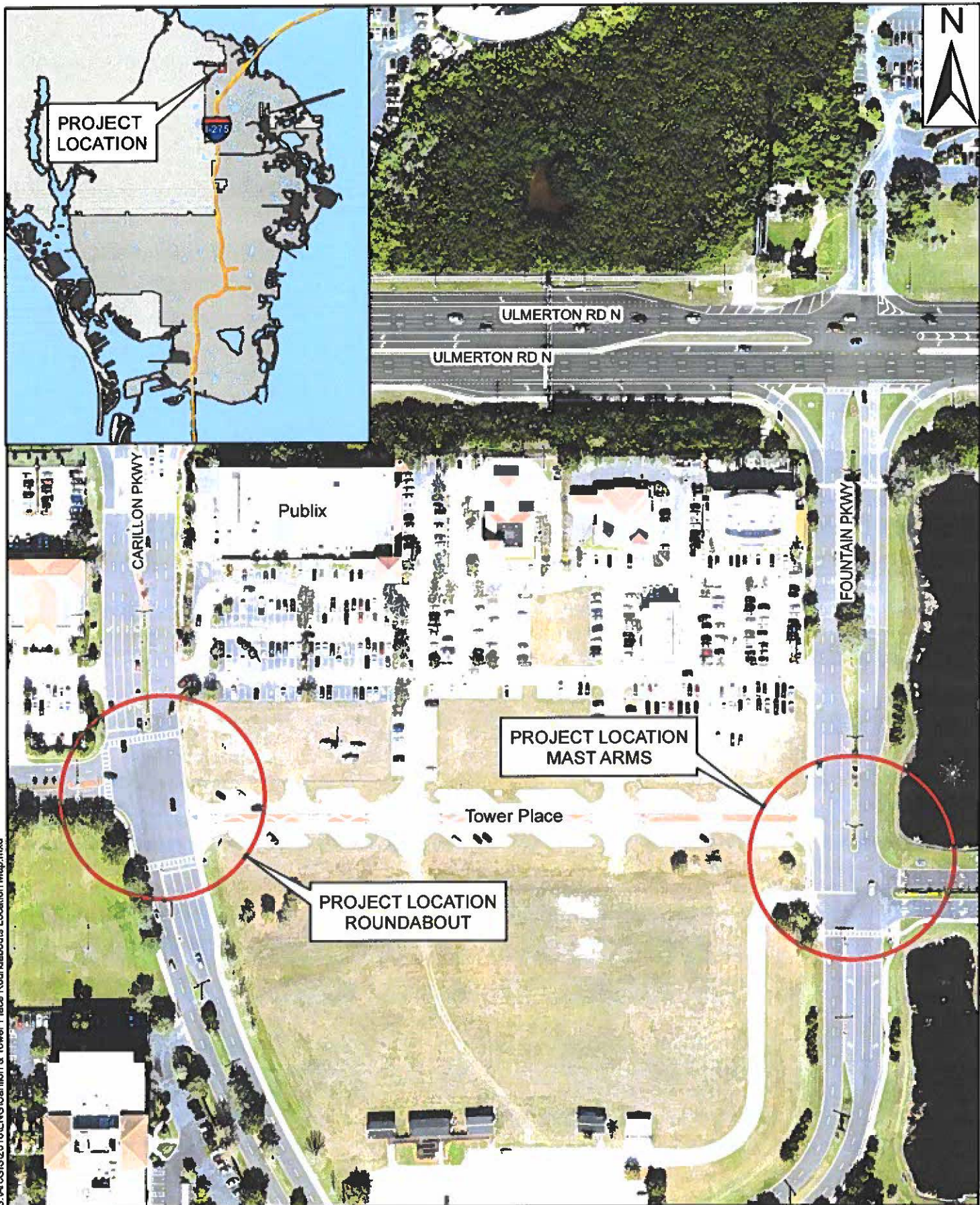


ENGINEERING & CAPITAL  
IMPROVEMENTS DEPARTMENT  
CITY OF ST. PETERSBURG  
CITY PROJECT MANAGER: ZIBA MOHAMMADI

**CARILLON ROUNDABOUTS**  
**PROJECT # 18122-112**

DATE: XX/XX/XX  
SCALE: SEE BAR SCALE  
DRAWING No.  
**18122-02**





ENGINEERING AND CAPITAL  
IMPROVEMENTS DEPARTMENT  
CITY of ST PETERSBURG

APPROVED BY:

DATE:

7/26/2019

Carillon Parkway & Tower Place and  
Baycreek Lane & Fountain Parkway Roundabouts  
Project No. 18122-112

