



3190 Tyrone Boulevard N.
St. Petersburg, FL 33710
Main: (727) 345-9111
Fax: (727) 345-7130
www.parc-fl.org

BOARD OF DIRECTORS

Mark A. Myers
CHAIRPERSON

Joel S. Manings, CRPC®
VICE CHAIRPERSON

Beth A. Horner
Kristin Beltzer
Michael Bice
Joseph E. Blouin, Jr.
Robert P. Byelick, Esq.
Dick Crippen
Edward A. Eager, CPA
Frank Farkas, DC
Jenny Hasbun
Marcos E. Hasbun, Esq.
Paul Manfrey
Laurance A. Milov
Will Williams, Ph.D., MBA

Michelle Detweiler
President & CEO

Karen Higgins
President & CEO Emeritus

Supported by

Agency for Persons with Disabilities

Community Foundation of Tampa Bay, Inc.

Department of Education –
Division of Vocational
Rehabilitation

Department of Health – Children’s
Medical Services

Early Learning Coalition of Pinellas
County

Juvenile Welfare Board – Children’s
Services Council of Pinellas County

Pinellas Community Foundation

United Way Suncoast

February 15, 2022

ATTN: Real Estate and Property Management Department
City of St. Petersburg
One 4th Street North
St. Petersburg, Florida 33701

RE: Parc Center for Disabilities Early Intervention Preschool & Children’s Outreach Services, letter of interest for development of City owned property located at 2100 18th Avenue South.

To Whom It May Concern:

Parc Center for Disabilities has been providing services to children and adults with developmental disabilities in St. Petersburg for 69 years. The main campus which was purchased from the city in 1966 sits on 7.5 acres in the Tyrone area. The original building which has provided children’s services for over 50 years is past its useful life expectancy and is a major upkeep for our organization.

For over 65 years, PARC Children’s Services has led the industry in Early Experiences Informed Care (EEIC). From our inception in 1953 PARC has always recognized the critical importance of meaningful and loving one-on-one interactions with the children we serve. PARC Children’s Services is renowned for three distinct EEIC programs: Discovery Learning Center (DLC) Preschool; Family Focus Early Intervention Services, and Respite Caregiver Relief Services. Delivered by our highly trained team of Early Experiences Informed childcare and intervention professionals, PARC Children’s Services is Pinellas County’s hub of expertise for early learning opportunities, family support, individualized therapies, and school readiness education.

We are seeking an alternative location for this component of Parc’s programs that impacts several hundred families in our city.

We appreciate the opportunity to provide this letter of interest and communicate this critical need to continue the vital service Parc provides to the children and families in our community. Please contact me with any questions, comments, or suggestions.

Sincerely,

Michelle Detweiler
President & CEO



Parc - Discovery Learning Center & Children's Services

Licensed for 163 children

(13) Classrooms from infant through pre-K/VPK

Full capacity 143 children

Most children served live within the 300% or less federal poverty level.

Overall required size of new DLC facility to accommodate 143 children is 21,000SF.

Classroom breakdown:

- (4) infant classrooms (525SF each)
- (2) toddler classrooms (525SF each)
- (2) two-year-old classrooms (525SF each)
- (2) three-year-old classrooms (650SF each)
- (2) four-year-old Pre-K/VPK classrooms (750SF each)
- (1) spare use classroom

Children's Services:

Non-behavioral Therapy area with office and (3) one-on-one classrooms

Family Focus Program - outreach

Respite Program - outreach

Kitchen

Multi-Purpose room

Art/Music/Library space

Offices/nurses areas

Lobby/reception area

Public bathrooms

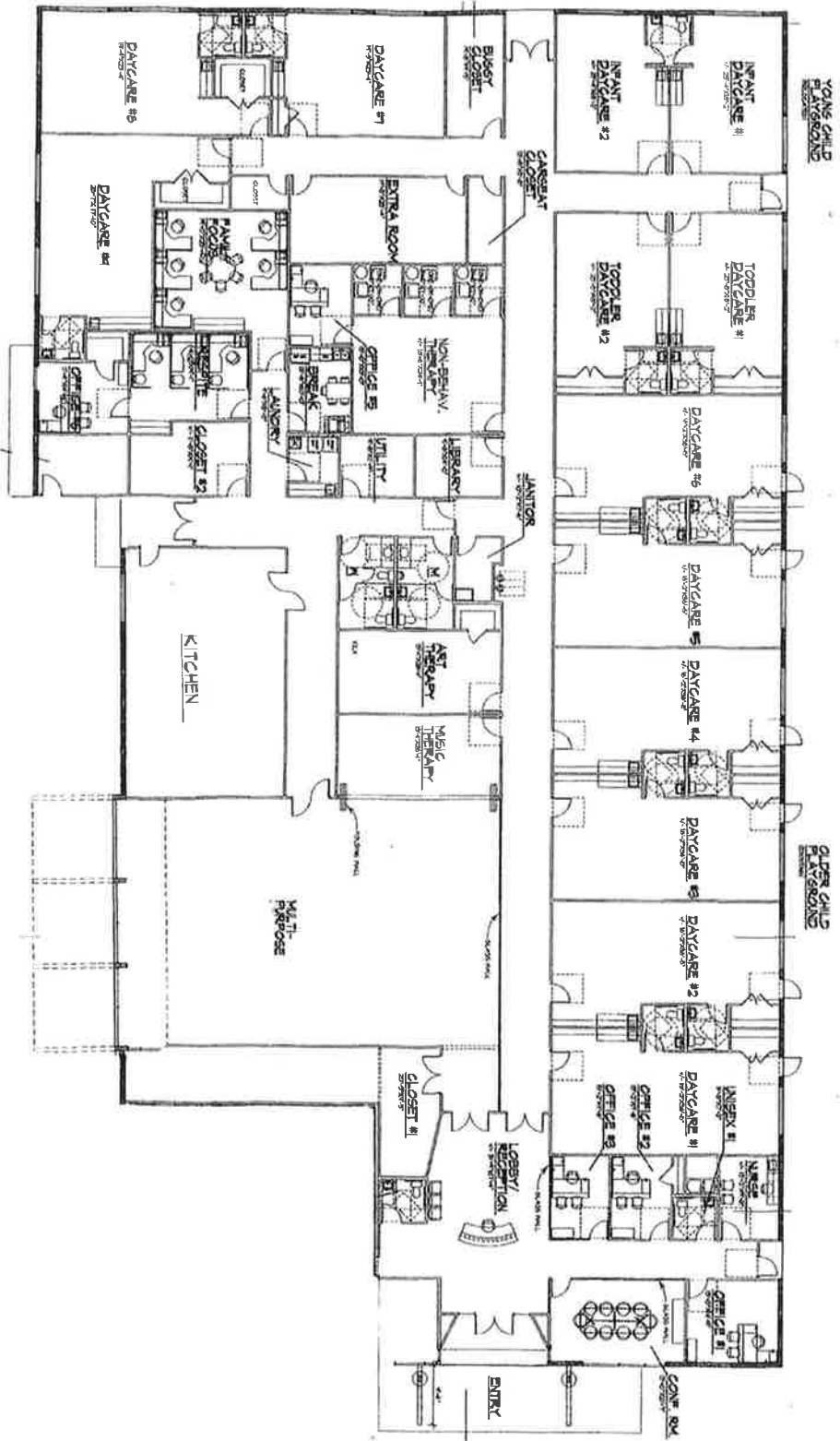
Conference room

Utility closets (janitors, laundry, data, storage)

Outdoor Playground space

Parking, loading area, receiving area

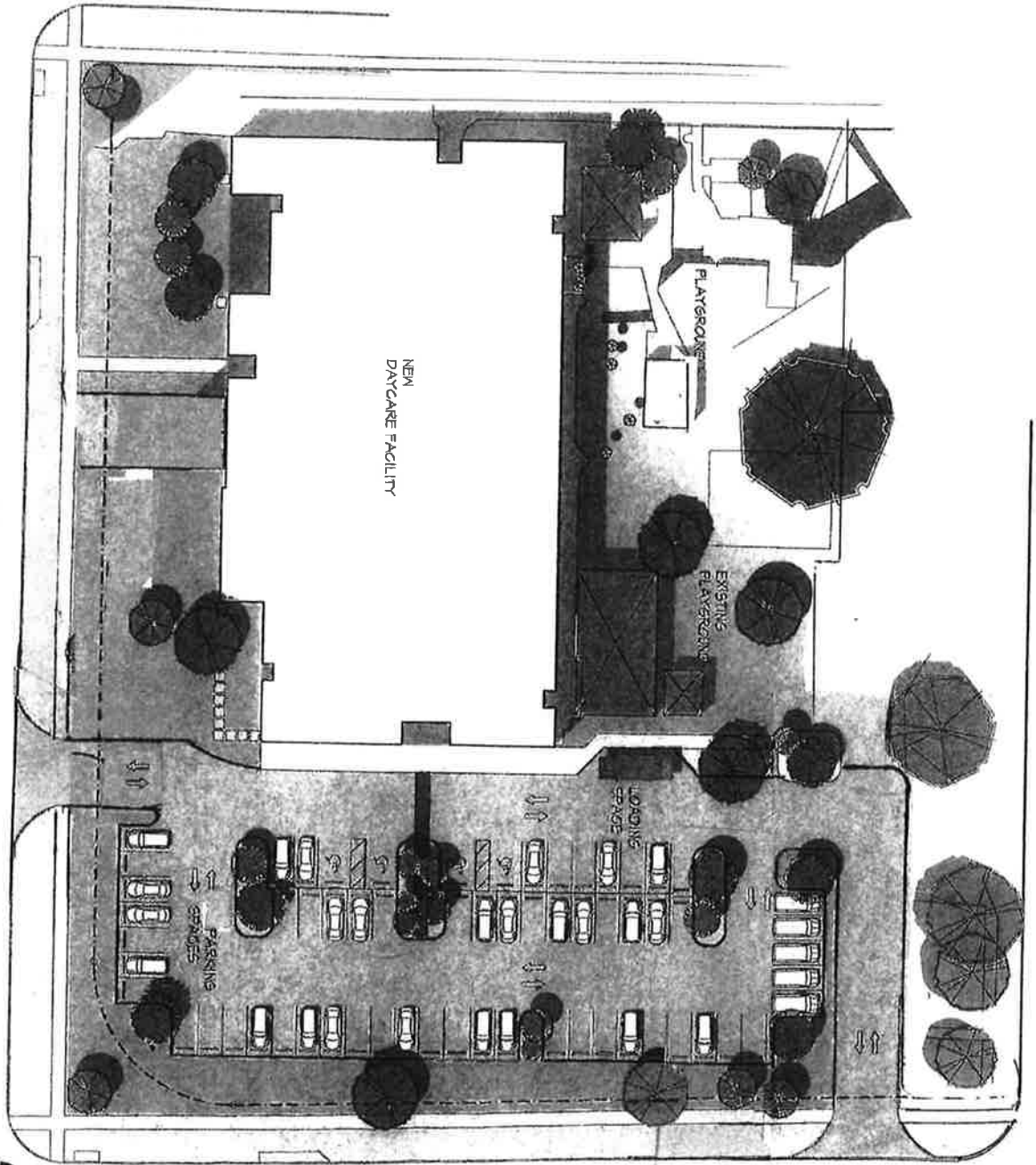
2-acre minimum site



PARC - DISCOVERY LEARNING CENTER
 SCHEMATIC FLOOR PLAN

PARC - DISCOVERY LEARNING CENTER

21ST STREET S.



18TH AVENUE S.