

City of St. Petersburg  
Joint Meeting  
**City Council - Committee of the Whole**  
**Community Planning & Preservation Commission- Workshop**  
March 31, 2022 – 2:00 PM  
The Historic Manhattan Casino, 642 22<sup>nd</sup> Street South - 2<sup>nd</sup> Floor

---

- 1) **Call to Order - City Council Chair Gina Driscoll & Community Planning & Preservation Commission Chair Sharon Winters**
  
- 2) **Discussion Items – March 31, 2022**

**Joint City Council/CPPC Historic Preservation Meeting**

Introduction Memo- Derek Kilborn, *Urban Planning and Historic Preservation Manager*

**I. Introduction**

- a. Presentation PowerPoint

**II. Hierarchy of Historic Preservation in St. Petersburg**

**III. Annual Report**

- a. Historic Preservation Annual Report FY 2020-2021

**IV. Potential Discussion Items**

- a. Discussion of City Council and CPPC

**V. Private Sector**

**VI. Historic Preservation Month**

**Informational Documents:**

1. List of National Register of Historic Places
2. List of St. Petersburg Register of Historic Places
3. Certificate of Appropriateness Approval Matrix
4. Third Party Initiated Applications
5. Map Demolition Local Historic Districts
6. List of Potentially Eligible Properties
7. List of Legacy Businesses
8. Markers and Monuments
9. Resource Guide
10. Transfer of Development Rights, Historic
11. Preservation Incentives for Historic Properties

**General Attachments:**

Pending and Continuing Referral List  
Agenda Item Support Material

**3) Upcoming City Council Meeting Dates & Tentative Agenda Items**

**April 7, 2022 @ 8:00**

CBA Implementation & Council Appointee

**April 21, 2022 @ 10:00**

FY23 CIP Budget

**April 28, 2022 @ 3:00**

Disparity Study

COMMITTEE OF THE WHOLE PENDING/CONTINUING REFERRALS					March 31, 2022	
Topic	Return Date	Date of Referral	Prior Meeting	Referred by	Staff	Notes
Joint City Council/CPPC Meeting	3/31/22 @ 2:00	Annual		Comp Plan	Abernethy Kilborn	
Discussion about possible amendments to the City Code relating to the approval process for changes to local historic landmark districts (16.30.070.2.6) and possibly including a request to amend the matrix items to go before Community Planning & Preservation Commission (CPPC)	3/31/22 @2:00	10/7/21	10/28/21	Foster	Abernethy Kilborn	Workshop with CPPC and return to Council
Continued Discussion of the Potentially Eligible List and alternative proposals	3/31/22 @2:00	5/16/19	8/8/2019 10/28/21	Foster	Abernethy Kilborn	Workshop with CPPC and return to Council
Community Benefits Agreement implementation along with current and future projects that fall within the threshold. Council's appointee to the CBA Advisory Board.	4/7/22 @8:00	3/24/22		Figgs-Sanders Driscoll		
FY '23 CIP Budget	4/21/22 @ 10:00	Annual		Annual	Makofske	
Disparity Study Including a discussion on a second location for the Greenhouse to be located in South St. Petersburg	4/28/22 @ 3:00	7/8/21	9/23/21	Montanari Driscoll	Eilerman	Plan to come back before City Council for additional input on progress made two additional times (end of 2021 and winter of 2022). Greenhouse second location to be incorporated into recommendations as part of action plan.
FY '23 Operating Budget	5/3/22 @ 9:00	Annual		Annual	Makofske	
Presentation and Discussion on the Downtown Mobility Study in early 2022	5/19/22 @10:00	9/30/1931		Administration	Mory	

StPete 2050 Plan	5/26/22 @2:00PM	12/17/2019	10/22/20 1/28/21 8/26/21 2/24/22	Administration	Abernethy	Returning to COW with 1/2 mile parameter discussion for NTM-1 and affordability options.
Review of City Council Policy and Procedures Manual	7/28/22 @ 2:00	12/16/2021		Council	Legal	
2023 Calendar setting and selection of Chair and Vice Chair	12/15/22 @ 9:30	Annual		Annual	Sheppard	
Municipal Marina Discussion	TBD	4/7/22		Driscoll Montanari	Zeoli	Pending approval of PS&I report at full Council, April 7th, 2022.
Stormwater Master Plan	TBD	8/12/2021		Administration	Prayman	
2020 SPHA Annual Reports	TBD	Annual		Annual	SPHA	
SPHA Board Discussion	TBD	Annual		Annual	SPHA	
A review of South St. Petersburg Community Redevelopment Area (CRA) grants eligibility requirements to identify areas of improvement	TBD	7/15/21		Figgs-Sanders	Smith	
City Initiated Historic Designation	TBD	12/5/2019	10/28/21	Gerdes	Abernethy Kilborn	Relates more specifically to the Detroit Hotel block and next steps. (i.e. Local Historic District, individual buildings along 200-block of Central Avenue, or multiple property listing of several commercial storefronts along Central Avenue east of 31 <sup>st</sup> Street.)
City Redistricting	TBD	2/10/22	2/17/22	Driscoll	Legal	Mayor to give timeframe for issuing report. Scheduling to coincide with resolution from Council to begin process.



## **HISTORIC PRESERVATION MEETING**

**March 31, 2022, 2:00 PM**

**Historic Manhattan Casino**

**642 22<sup>nd</sup> Street South, St. Petersburg, FL 33712**

### **I. INTRODUCTION**

- Individual Introductions
- Purpose of the Meeting: Pursuant to City of St. Petersburg's Comprehensive Plan, Historic Preservation Element, Policy HP 4.6:

"The commission(s) designated in the LDRs and City Council shall annually conduct a joint workshop which will include input from the commission(s) designated in the LDRs, the preservation community and the development community. At that time, staff will present a report concerning the activities of the Commission during the past year, including the identification of known historic and archaeological resources lost during the past year, and recommendations for improvements to the City's preservation program."

### **II. HIERARCHY OF HISTORIC PRESERVATION IN ST. PETERSBURG**

*City Staff will briefly explain the hierarchy of historic preservation from the federal government to our local land development regulations.*

### **III. ANNUAL REPORT**

*City staff will review the annual report. See attached.*

### **IV. POTENTIAL DISCUSSION ITEMS**

*The following list of related subjects are included here for reference; each of the following is also identified within the annual report and may be discussed at either time. The list is provided in alphabetical order.*

- Annual report requirement
- COA Matrix update
- Continued cemetery work at Tropicana Field site
- Heritage trail funding for ongoing maintenance and repair

- *List of Potentially Eligible Properties* and possible demolition delay replacement
- National Register and local landmark designations
- Review of Site Plan Review (SPR) and SE (Special Exception) applications.
- Streetscape preservation relating to hexagon-shaped pavers and public sidewalks
- Transfer of Development Rights, Historic (TDR,H)
- Updated and new neighborhood surveys

**V. PRIVATE SECTOR**

*City staff will highlight private sector initiatives relating to historic preservation.*

**VI. HISTORIC PRESERVATION MONTH**

*Historic Preservation Month is celebrated nationally during the month of May. City staff will highlight several planned initiatives.*



# HISTORIC PRESERVATION

## Planning and Historic Preservation Division Annual Report FY 2020-2021

### INTRODUCTION

The Historic Preservation staff works with property owners, local businesses, public agencies, and community organizations to help identify, preserve, and promote St. Petersburg's unique character. Division Staff is responsible for the administration of the Local Landmarks Program, the Monuments and Markers Program, the Ad Valorem Tax Exemption Program, and the Transfer of Development Rights program. Further, Division staff reviews all Certificates of Appropriateness for changes affecting Local Landmark properties. Additionally, staff coordinates Certified Local Government (CLG) responsibilities with the State Historic Preservation Office, reviews nominations to the National Register of Historic Places nominations, conducts Section 106 reviews, serves as staff to the Community Planning and Preservation Commission and aids the public with historical research, rehabilitation issues and economic incentives.

### DEPARTMENT

Urban Planning and Historic Preservation Division  
Planning and Development Services Department  
City of St. Petersburg, Pinellas County, Florida  
Municipal Services Center  
One Fourth Street North, 8<sup>th</sup> Floor  
St. Petersburg, Florida 33701  
[stpete.org/history](http://stpete.org/history)

Elizabeth Abernethy, Director  
(727) 893-7868, [elizabeth.abernethy@stpete.org](mailto:elizabeth.abernethy@stpete.org)

Derek Kilborn, Manager  
(727) 893-7872, [derek.kilborn@stpete.org](mailto:derek.kilborn@stpete.org)

Laura Duvekot, Historic Preservationist II  
(727) 892-5451, [laura.duvekot@stpete.org](mailto:laura.duvekot@stpete.org)

Kelly Perkins, Historic Preservationist II  
(727) 892-5470, [kelly.perkins@stpete.org](mailto:kelly.perkins@stpete.org)

Katherine "Kate" Connell, Administrative Assistant  
(727) 893-7871, [katherine.connell@stpete.org](mailto:katherine.connell@stpete.org)

### CITY ATTORNEY'S OFFICE

Michael Dema, Assistant City Attorney

Heather Judd, Assistant City Attorney

### COMMUNITY PLANNING AND PRESERVATION COMMISSION MEMBERS

Sharon Winters, Chair

Vacant, Regular Member

Lisa Wannemacher, Vice-Chair

Vacant, Regular Member

Christopher Burke, Regular Member

E. Alan Brock, Alternate Member

Manitia Moultrie, Regular Member

Will Michaels, Alternate Member

Thomas Whiteman, Regular Member

Jeff Wolfe, Alternate Member

### DEPARTMENT DESCRIPTION AND ANNUAL UPDATE

#### PROGRAMS

- **National Register of Historic Places**  
Staff members are responsible for assisting the State Historic Preservation Officer with administering National Register to the National Register of Historic Places. An inventory of these buildings and districts is maintained by, and on file with, the Urban Planning and Historic Preservation Division.

## Summary National Register of Historic Places

TOTAL	
26	National Register, Individual
5	National Register, Districts
5	National Register, Archaeological
36	Total National Register Listings

- **Local Landmark Designations, Individual and District**

Staff members are responsible for administering the Local Landmark Program Designation Reports to the St. Petersburg Register of Historic Places. An inventory of these buildings and districts is maintained by, and on file with, the Urban Planning and Historic Preservation Division.

## Summary Local Landmarks to Date

TOTAL	LOCAL LANDMARKS
119	Local Landmarks, Individual
10	Local Landmarks, Local Historic Districts
3	Local Landmarks, Archaeological
132	Total Local Landmarks

Note:  
The City of St. Petersburg has 86,026 of parcels. The total number of individual and archaeological local landmarks constitute approximately 00.15-percent of the total number of parcels citywide.

TOTAL	LOCAL HISTORIC DISTRICTS
10	Local Landmark Districts
611	Contributing Resources to Local Landmark Districts
86	Non-Contributing Resources to Local Landmark Districts
697	Total No. of Contributing and Non-Contributing Resources

Note:  
The City of St. Petersburg has 86,026 of parcels. The total number of contributing and non-contributing parcels regulated through the Certificate of Appropriateness requirement constitute approximately 00.81-percent of the total number of parcels citywide.

## FY 2020-21 Total

### Individual Local Landmarks

- [Approved/Listed] Smalley-Green Auto Building, 1180 Central Ave., (20-90300001): owner-Initiated designation, October 15, 2020
- [Approved/Listed] Glenoak Elementary School, 1900 12<sup>th</sup> St. So., (20-90300002): owner-Initiated designation, November 12, 2020
- [Approved/Listed] Axford House, 4705 5<sup>th</sup> Ave. No., (21-90300002): owner-Initiated designation, May 20, 2021
- [Approved/Listed] Jordan Park Administration Building, 2240 9<sup>th</sup> Ave. So., (21-90300001): owner-Initiated designation, July 8, 2021. The City of St. Petersburg is the owner.
- [Withdrawn] St. Petersburg Hotel, 900 Central Ave., (20-90300005): third-party-initiated designation, withdrawn June 11, 2021 after agreement between owner and applicant.
- [Denied] Tenth Street Church of God, 207 10<sup>th</sup> St. No. (21-90300003): owner-initiated request to rescind existing local landmark designation, July 22, 2021

## Local Landmark Districts

- [Approved/Listed] Kenwood Section – Southwest Central Kenwood Local Historic District (District with 142 contributing properties and 8 non-contributing properties, city file no. 19-90300002): ballot-initiated designation, April 15, 2021
- [Considered/Closed] City Council considered whether to city-initiate a district designation application for the Mirror Lake neighborhood in downtown St. Petersburg. The new business item was formally withdrawn and the matter is now considered closed.

## **FY 2021-22 to Date**

### Individual Local Landmark Designations

- [Active] John Louis (Jack) Kerouac House, 5169 10<sup>th</sup> Ave. So. (22-90300001): owner-initiated designation, CPPC May and City Council June
- [Approved/Listed] Polish American Society, 1243 Beach Drive SE. (21-90300005): owner-Initiated designation, October 7, 2021
- [Approved/Listed] Peninsular Fruit Co. Bldg., 10000 Gandy Blvd. (21-90300006): owner-Initiated designation, January 20, 2022

### • **List of Potentially Eligible Properties**

The identification and listing of historic properties potentially eligible for local landmark designation is authorized by City Code. The intent is to protect properties identified as individually eligible from the threat of demolition

- [Demo Pending] Mitchell / Stanton Apartments, 211 3<sup>rd</sup> St. No.
- [Following] Tomlinson Vocational School, 296 Mirror Lake Dr. No.
- [Following] Heritage Hotel, 234 3<sup>rd</sup> Ave. No.

### • **Certificate of Appropriateness**

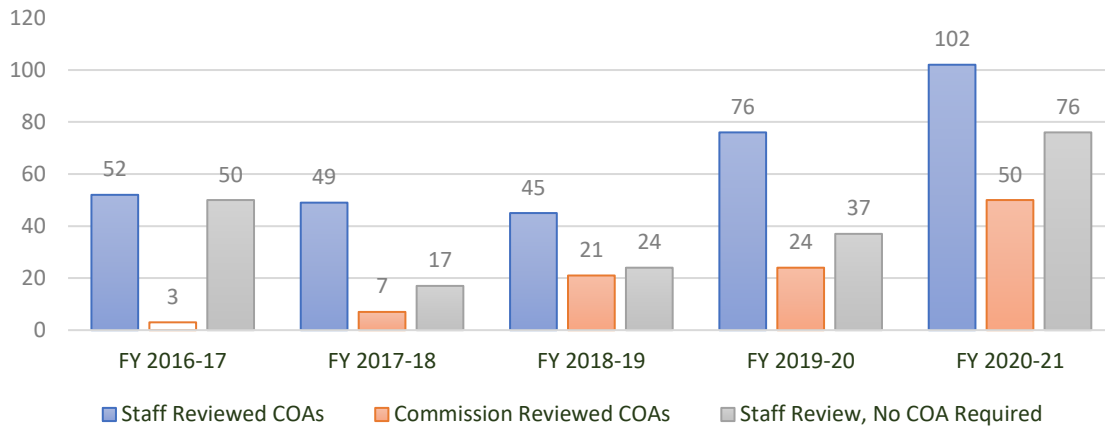
A Certificate of Appropriateness (COA) is required for any exterior alteration to a designated landmark, landmark site, or property within a historic district prior to undertaking construction. The COA process protects locally designated properties from being adversely altered or demolished and requires the submission of building plans and material descriptions for approval. Division staff processes each application, manages public notification where required, and conducts a review, prepares a report and renders a decision or presents to the CPPC utilizing design guidelines based on the Secretary of the Interior's Standards for Rehabilitation and St. Petersburg's Design Guidelines for Historic Properties to review COAs.

### **Summary FY 2020-2021**

TOTAL	% REVIEWS	APPROVED	
102	44.7	98	Staff Review
50	21.9	46	Commission Review (CPPC)
76	33.3	NA	Staff Review, Determined No COA Required
228		220	Total Reviews

Note:

The Urban Planning and Historic Preservation Division has streamlined the COA process to include bundling several actions under a single COA review and using more discretion when determining whether actions are ordinary maintenance and repair.



### FY 2020-21 Total

#### Renovations, Rehabilitations, New Construction (Most Notable)

- [Approved] Mari-Jean Hotel window replacement, 2349 Central Ave. (21-90200001)
- [Approved] Vinoy Park Hotel alterations, 501 5<sup>th</sup> Ave. No. (21-90200083)
- [Approved] Hotel Cordova addition, 253 2<sup>nd</sup> Ave. No. (21-90200100)
- [Approved] James Henry Designation Boundary Change and Garage Relocation

#### Demolitions

- [Active] 620 10<sup>th</sup> Avenue So. (22-90200008), contributing to Roser Park Local Historic District

### FY 2021-22 to Date

#### Miscellaneous

- [Active] Installation of a 5G wireless facility within public street right-of-way in Kenwood LHD
- [Pending] Text amendment to COA Matrix regulating administrative and public hearing procedures.
- [Possible – Partial Demo] Westminster Church, 126 11<sup>th</sup> Avenue NE, Local Landmark
- [Possible – Relocate] John L. and Virginia Burnside House, 136 5<sup>th</sup> Avenue No., Local Landmark
- [Possible – Relocate] Melrose Clubhouse, 1801 Melrose Avenue So., Local Landmark

- **Design Guidelines for Historic Properties**

Division staff maintain and update the *St. Petersburg Design Guidelines for Historic Properties*. The Guidelines include an architectural styles section; information relating to maintenance and repair, additions and alterations, and new construction; a description of community characteristics; and an appendix including specific information relating to each of the City's local historic districts.

- **Certificate to Dig (Archaeology)**

Like a COA, the Certificate to Dig (CTD) is required for any alteration to a Sensitivity Level I archaeological site prior to undertaking ground disturbing activity. The CTD process protects archaeologically sensitive locations from being adversely altered or demolished. Division staff processes each application, manages public notification where required, and conducts a review, prepares a report, and renders a decision or presents to the CPPC.

- **Historic Signs**

Some signs themselves have become significant and iconic elements of the built environment. Since policies regulating the size and placement of business signs have changed over the years, some of St. Petersburg’s most unique and recognizable signs have become nonconforming. To allow and encourage the continued use, maintenance, and preservation of these signs, the City has published a document online titled “St. Petersburg, Florida’s signs of Historic Significance” and adopted incentives pertaining to their preservation.

TOTAL	REMOVED	ALTERED	
31	1	1	Extant Signs of Historic Significance
Note:			
1. Biff Burger, 3939 49 <sup>th</sup> St. No. removed.			
2. Car Store, 3445 34 <sup>th</sup> St. No. significantly altered removing its historic elements.			
3. Palm Aire Motel, 3250 34 <sup>th</sup> St. No. damaged in auto crash; future unknown.			
4. Masonic Temple, 114 4 <sup>th</sup> St. So. is scheduled for removal as part of a pending redevelopment. Sign may be incorporated into the new redevelopment plan, so it remains as originally listed.			

- **Adaptive Reuse**

Adaptive reuse encourages the *retention* and *productive reuse* of structures that have historic, architectural, or cultural value to the City rather than seeing their underutilization or demolition because the original use has become functionally obsolete. Often, historically significant structures, especially when located within a single-family neighborhood are abandoned or demolished because it is too difficult to meet current zoning standards and building code requirements. This is especially true of institutional uses such as schools and churches that have operated for years in neighborhood settings, but due to demographic changes and school consolidation are economically obsolescent. Adaptive reuse provides flexibility in the proposed land use types, dimensional setbacks, design criteria, and parking requirements. Adaptive reuse is becoming an increasing popular tool.

- **Legacy Businesses**

The identification and recognition of legacy businesses is an approach to preservation that celebrates the significance and contributions of longstanding local businesses, not just the spaces they inhabit. These legacy businesses have helped shape the character of the neighborhood they’re located in and continue to serve it today. An inventory of legacy businesses is maintained by, and on file with, the Urban Planning and Historic Preservation Division. Historic preservation staff welcomes additional information and recommendations relating to legacy businesses.

TOTAL	CLOSED, PERMANENT	CLOSED, TEMPORARY	
25	2	2	Legacy Businesses
Note:			
A ‘legacy business’ is loosely defined as a St. Petersburg business that has been in continuous operation for 50-years or more.			
1. Haslam’s Bookstore, 2025 Central Avenue, temporarily closed			
2. Coney Island Hot Dogs, 250 Dr. Martin Luther King Junior St. No., temporarily closed			
3. Furniture Workshop, 2426 Dr. Martin Luther King Junior St. No., closed			
4. Biff Burger, 3939 49 <sup>th</sup> St. No., closed			

- **Determination of Eligibility**

Division staff routinely prepare *determinations of eligibility* to assist property owners and potential buyers of property. The *determination of eligibility* is a preliminary, written analysis identifying whether City staff could recommend local landmark designation; only City Council is authorized to grant a local landmark designation, but a preview of the City staff recommendation can be helpful. The purpose of this courtesy service is to encourage the use of incentives, including adaptive reuse, ad valorem tax exemptions, and the Historic Preservation and Conservation Grant Program, where applicable.

- [Completed/Demo] Woolworth Building, 551-567 Central Ave.

- **Research Assistance**

Division staff provides substantial assistance to property owners of historic buildings and structures regardless of whether these buildings and structures are local landmarks. General research assistance includes counsel on the use of historically appropriate materials, architectural elements, such as windows and ornamentation, and the impact of renovations and new additions on the historical integrity of a building or structure.

**Responses to Special Exception (SE) and Site Plan Review (SPR) criteria**

- [Active] Extension request needs updated comments, 440 3<sup>rd</sup> Ave. No. (18-31000016)
- [Completed/Approved] Vacant Lot, 450 1<sup>st</sup> Ave. No. (20-31-000017)
- [Completed/Approved] Former Masonic Lodge, 114 4<sup>th</sup> St. So. and 333 2<sup>nd</sup> Ave. So. (21-31000003)

**Public Education**

- [Active] Updates to Historic Preservation Map Module
- [Ongoing] Laura Duvekot, Historic Preservationist, Board Member, Florida Trust for Historic Preservation
- [Ongoing] Laura Duvekot, Historic Preservationist, published several related news articles
- [Completed] Boom Town 3<sup>rd</sup> Graders, Jamerson Elementary School, Fall 2021
- [Pending] Historic Preservation Month proclamation and printables
- [Pending] Direct mail notification to individual and district-designated properties to share updated information relating to historic preservation procedures and incentives. This effort will include creation of a dedicated webpage to summarize most relevant information.
- [Pending] Possible staff assistance to Preserve the Burg who is planning to host an information workshop and exposition in May during Historic Preservation Month.
- [Pending] Possible staff assistance to Preserve the Burg who is researching whether to commission a study on economic development and historic preservation in St. Petersburg.

- **Special Projects**

Special projects include efforts to inform and engage St. Petersburg residents, visitors, and the broader historic preservation community. Accomplishments include completion of the African American Heritage Trail, hosting the Society for Commercial Archaeology National Conference, and centennial celebrations such as the Open-Air Post Office in 2017.

**General**

- [Active] Consider amendment or replacement of the *Potentially Eligible List*. On August 28, 2021, the City Council considered replacement of the list with a demolition delay ordinance.
- [Active] Ground penetrating radar and associated investigations of the Evergreen (alt. "Ever-Green"), Moffett (alt. "Moffet" and "Moffat" and sometimes referred to as "Moffett Negro Cemetery"), and Oaklawn Cemetery (alt. "Oak Lawn" and sometimes referred to as the "Odd Fellows"). These cemeteries are generally located at the intersection of 16<sup>th</sup> St. So. and 5<sup>th</sup> Ave. So.
- [Completed] Annual code inspection of local landmarks

**Grants**

- [Active] Continue our coordination with the Pinellas County School Board and district administration relating to preservation of the Melrose Clubhouse, a dedicated local landmark. Initial efforts by Division staff to save the Melrose Clubhouse also include technical assistance from the Engineering and Capital Improvements Department and Economic and Workforce Development Department. In January 2022, Division staff applied to the National Trust for Historic Preservation's African American Cultural Heritage Action Fund to compete for a grant totaling up to \$250,000. If received, grant funding will assist with preliminary research for a possible building relocation on-site and subsequent renovation.

- [Active] Division staff continues to assist Pinellas County Planning Division staff and the University of Florida Historic Preservation Program during the first phase of the Historic Resources Survey of Flood Hazard Areas for Pinellas County (Mid-century 1945-1975). Staff worked with the project team to help identify significant midcentury properties throughout St. Petersburg, particularly properties located in flood-prone areas. This is a multi-phase project that will help guide Pinellas County and local municipalities on future historic preservation planning and historic resource resiliency projects.
- [Completed] Division staff has assisted the Sunken Gardens with the planning and design of the Sunken Gardens History Center by serving on the project’s Evaluation Committee following COA approval and providing ongoing research and feedback as lost historic details have been revealed during construction.

● **Traditional Streetscapes**

Traditional streetscapes, including brick streets, granite curbs, and hexagon-shaped sidewalk pavers, are protected through City Code Section 16.40.130. Staff members answer customer inquiries, research potential hexblock sidewalk overlay districts, coordinate with the City’s Stormwater, Pavement, and Traffic Operations Department and Engineering Department, and process requested variances to the Traditional Streetscape standards.

- [Pending] Supply shortages (18” hexagon-shaped sidewalk pavers) may necessitate a change in the program requirements or purchasing priorities.

● **Markers, Monuments, Historic Plaque Applications**

Division staff reviews applications for the placement of plaques and markers intended to commemorate events, individuals, and buildings or sites that have been significant to St. Petersburg’s local culture and heritage. Markers commemorating historic events, people and buildings must be reviewed by the CPPC; markers commemorating local landmarks additionally require COA approval.

- [Approved] City Hall Missing Mural Marker, 175 5<sup>th</sup> St. No. (20-90600001)
- [Approved] National Votes for Women, Central Ave. TBD (21-90600001)
- [Installed] John Evans Lynching Historic Marker, 200-block Dr. Martin Luther King Jr. St. So. (20-90600002)
- [Installed] Shuffleboard Clubhouse, 536 4<sup>th</sup> Ave. No. (20-90600003)
- [Pending] Request to coordinate/assist private-initiated historic marker along Jungle Country Club Creek
- [Research] Establish City-coordinated marker program for individual local and National Register properties.

● **Section 106 Reviews**

In the National Historic Preservation Act of 1966 (NHPA), Congress established a comprehensive program to preserve historical and cultural amenities. Section 106 of the NHPA requires consideration of historic and archaeological resources in the multitude of projects with federal involvement. Section 106 requires federal agencies to consider the effects of projects they carry out, approve, or fund on cultural resources. At the municipal level, Division staff reviews a variety of projects for compliance with the Section 106 process, including cellular towers, municipal properties, and transportation and housing projects.

TOTAL	
5	For City’s Housing Department
8	For City’s Code Compliance and Assistance Department

● **5G Wireless Antennae Installation Reviews**

Federal and State pre-emptions regarding the regulation of 5G wireless antennae installations are not exempt from the Certificate of Appropriateness process. Division staff review location requests and determine whether a public hearing review is required by City Code Section 25.316(a)(15).

- Florida Master Site File Forms**

The Florida Master Site File is the State of Florida's official inventory of historical and cultural resources. The Site File includes archaeological and historical survey reports and other information relevant to specific properties throughout the State of Florida. A local landmark or National Register designation is not required to submit documents into the Florida Master Site File. Updates to the Florida Master Site File are sometimes required as a condition of a grant or the Section 106 process. Division staff provides this service, when required.

<b>TOTAL</b>	
<b>7,739</b>	Total number of parcels with a recorded Florida Master Site File form
<b>499</b>	Number of New Florida Master Site File forms added in FY 2020-2021
Note: The City of St. Petersburg has 86,026 of parcels. The total number of parcels with at least one Florida Master Site File form on record equals nine (9) percent of the total number of parcels citywide.	

- Legislative Changes**

Division staff also perform legislative tasks, including Comprehensive Plan and related code amendments described elsewhere in this annual report. During the year’s legislative session, Division staff were tracking the potential impacts of numerous bills including, but not limited to, the following:

**FY 2021-22 to Date**

- [Amendment Withdrawn] SB 620 Local Business Protection Act relating to historic preservation
  - [Enrolled] HB 423 Building Regulations and historic preservation in the floodplain
  - [Session Closed; Approved] State budget appropriations language creating a 2-year tax exemption on retail sales of impact-resistant windows, doors, and garage doors.
  - [Session Closed; Not Approved] SB 1310 Florida Main Street Program and Historic Preservation Tax Credits

- Community Planning and Preservation Commission**

Division staff provided support to the Community Planning and Preservation Commission (CPPC) throughout the year. The CPPC reviews Certificates of Appropriateness, landmark designations, and matters relating to long range, comprehensive planning. Division staff provides clerking, and historic preservation expertise to the CPPC.

- [Active] Initiate annual joint meeting of the City Council and Community Planning and Preservation Commission, March 31, 2022, 2:00 PM, Manhattan Casino, 642 22<sup>nd</sup> St So.

**INCENTIVES**

- Ad Valorem Tax Exemption**

The Rehabilitation Ad Valorem Tax Exemption Program is a local program for qualifying residential or non-residential historic properties that exempts up to 12.1 mils of certain property taxes for a ten-year period. The program allows approximately \$121 per every \$10,000 of qualified expenses spent on the rehabilitation. There is presently no cap to the calculable rehabilitation expenses exempted.

<b>Total Reviews</b>	
<b>5</b>	New Applications, Approved
<b>13</b>	New Applications, Initiated
<b>18</b>	Total Applications
Note: 1. “New applications, approved” <i>means</i> applications that were approved in the subject federal fiscal year.	

2. "New applications, initiated" means applications for which a property owner has completed several application steps but has not completed the overall process, nor have they been approved.

- **Historic Preservation and Conservation Grant Program, Intown Redevelopment Plan**

In 2018, City Council approved up to \$5 million in the Intown Redevelopment Plan budget to support the continued rehabilitation and conservation of historic properties located within the Intown Redevelopment Area. Funding is allocated to eligible properties through a competitive grant process. Applicants are eligible for a matching grant up to \$250,000, not to exceed more than 50 percent (%) of the total eligible project costs. In 2019, five (5) projects received a total \$808,787.

- [Approved] Text amendments to the submission requirements and processing
- [Pending] Paused during the COVID pandemic, the grant is scheduled for reactivation in 2022.

- **Transfer of Development Rights, Historic**

Transfer of development rights, historic (TDR, H) is an economic development incentive provided to local landmarks listed in the *St. Petersburg Register of Historic Places*. The TDR program allows property owners of designated preservation districts to benefit from the development potential by allowing the sale of the development right. Division staff coordinates with the interested buyer, seller, and the City Attorney's office in completing the establishment and transfer of such credits. An inventory of available credits is on file in the Urban Planning and Historic Preservation Division.

- [Active] Send letters to qualified properties encouraging them to create TDR,H credits for the sale and transfer to receiving properties developing in the downtown center. Following over a decade of inactivity, the full pool of credits is reportedly optioned, purchased, or retired.

- **Florida Building Code Exemption**

Pursuant to Section 1201 of the Florida Building Code, certain building code exemptions may be granted to protect the elements, spaces, and features that make qualified buildings historic or architecturally significant. Contributing resources within a National Register district and local historic landmarks can both qualify for this exception. Where qualified properties may benefit from exemptions relating to the Florida Building Code, Division staff will advocate on behalf of owners/applicants with the City's Construction Services and Permitting Division and Fire Department.

- **Federal Rehabilitation Tax Credit**

Federal program for qualifying income-producing historic properties that allows a direct dollar for dollar reduction in the amount of income taxes owed. The amount of credit is 20% of the qualifying cost of the rehabilitation. For a \$50,000 rehabilitation, this would equal a \$10,000 credit on federal income taxes. This benefit applies to property that is individually listed in the National Register of Historic Places, or is identified as a contributing resource within a National Register Historic District. When qualified properties are applying for the Federal Rehabilitation Tax Credit, Division staff will provide research and other assistance to the owner/applicant and State Historic Preservation Officer.



# **NATIONAL REGISTER OF HISTORIC PLACES**

Urban Planning and Historic Preservation Division  
Planning and Development Services Department  
City of St. Petersburg  
Municipal Services Center  
One Fourth Street North, 8<sup>th</sup> Floor  
St. Petersburg, Florida 33701

**PROPERTIES AND DISTRICTS LISTED IN THE  
NATIONAL REGISTER OF HISTORIC PLACES**

**As of March 2022  
1972 – Present**

<b>Year</b>	<b>Resource Name</b>	<b>Address</b>	<b>List Date</b>
<b>1972</b>	Weeden Island Site	Address Restricted	June 1972
<b>1975</b>	U.S. Post Office	SW corner of 1 <sup>st</sup> Ave N & 4 <sup>th</sup> St N	April 1975
	John C. Williams House	444 5 <sup>th</sup> Ave S	April 1975
<b>1977</b>	Fort DeSoto Batteries	8 miles south of St. Petersburg on Mullet Key	December 1977
<b>1978</b>	Vinoy Park Hotel	501 5 <sup>th</sup> Ave NE	September 1978
<b>1980</b>	St. Petersburg Lawn Bowling Club	536 4 <sup>th</sup> Ave N	July 1980
	Casa Coe da Sol	501 Park St	July 1980
<b>1982</b>	Veillard House	262 4 <sup>th</sup> Ave N	October 1982
	Snell Arcade	405 Central Ave	November 1982
<b>1984</b>	Central High School	2501 5 <sup>th</sup> Ave N	August 1984
	Alexander Hotel	535 Central Ave	November 1984
<b>1985</b>	Casa De Muchas Flores	1446 Park St N	January 1985
	Studebaker Building	600 4 <sup>th</sup> St S	July 1985
<b>1986</b>	Dennis Hotel	326 1 <sup>st</sup> Ave N	April 1986
	St. Petersburg Public Library	280 5 <sup>th</sup> St N	June 1986
	Boone House	601 5 <sup>th</sup> Ave N	July 1986
<b>1990</b>	First Methodist Church of St. Petersburg	212 3 <sup>rd</sup> St N	September 1990
<b>1994</b>	St. Petersburg Woman's Club	40 Snell Isle Blvd	July 1994
<b>1998</b>	Green-Richman Arcade	689 Central Ave	January 1998

	Roser Park Historic District	Roughly bounded by 5 <sup>th</sup> & 9 <sup>th</sup> Streets S, and 6 <sup>th</sup> & 11 <sup>th</sup> Avenues S	April 1998
<b>1999</b>	Domestic Science and Manual Training School	440-442 2 <sup>nd</sup> Ave N	October 1999
<b>2001</b>	S.J. Kress & Company Building	475 Central Ave	October 2001
<b>2002</b>	Sanitary Public Market	1825 4 <sup>th</sup> St N	June 2002
<b>2003</b>	Jungle Prada Site	Address Restricted	February 2003
	North Shore Historic District	Bounded by 4 <sup>th</sup> St N, 5 <sup>th</sup> Ave N, Tampa Bay, and 30 <sup>th</sup> Ave N	February 2003
	Kenwood Historic District	Roughly bounded by 9 <sup>th</sup> Ave N, 19 <sup>th</sup> St N, 1 <sup>st</sup> Ave N, 31 <sup>st</sup> St N, 5 <sup>th</sup> Ave N, and 34 <sup>th</sup> St N	August 2003
	Round Lake Historic District	Roughly 5 <sup>th</sup> Ave N, 9 <sup>th</sup> St N, 13 <sup>th</sup> Ave N, and 4 <sup>th</sup> St N	September 2003
<b>2004</b>	Downtown St. Petersburg Historic District	Bounded by 5 <sup>th</sup> Ave N, Beach Dr NE, Central Ave, and 9 <sup>th</sup> St N	April 2004
<b>2013</b>	Maurice and Thelma Rothman House	1018 Park St N	February 2013
	John and Florence McKeage House	209 Park St S	April 2013
	James Henry House	950 12 <sup>th</sup> St N	April 2013
<b>2014</b>	Sunset Hotel	7401 Central Ave	November 2014
<b>2019</b>	Huggins-Stengel Field	1320 5 <sup>th</sup> St N	August 2019
	Abercrombie Park Site Complex	Address Restricted	October 2019
	Jungle Prada Site (Expansion)	Address Restricted	October 2019
	Maximo Beach Site	Address Restricted	October 2019
	Princess Mound Site	Address Restricted	October 2019



**CITY OF ST. PETERSBURG, FLORIDA**

# **ST. PETERSBURG REGISTER OF HISTORIC PLACES**

Urban Planning and Historic Preservation Division  
Planning and Development Services Department  
City of St. Petersburg  
Municipal Services Center  
One Fourth Street North, 8<sup>th</sup> Floor  
St. Petersburg, Florida 33701

# Local Historic Designations

1986 - Present

Year	City File #	Building/Site	Address	Designation Date
1986	HPC #86-01	Weedon Island	Riviera Bay & 94th Ave N	August 1986
	HPC #86-02	John Williams House	511 Second St S	May 1986
	HPC #86-03	Open Air Post Office	400 First Ave N	May 1986
	HPC #86-04	Vinoy Park Hotel	501 Beach Drive NE	May 1986
	HPC #86-05	Henry Veillard House	262 Fourth Ave N	June 1986
	HPC #86-06	Casa Coe da Sol	510 Park St	June 1986
	HPC #86-08	Snell Arcade	405 Central Ave	June 1986
	HPC #86-09	St. Petersburg High School	2501 Fifth Ave N	August 1986
	HPC #86-10	Alexander Hotel	535 Central Ave	August 1986
	HPC #86-11	Casa de Muchas Flores	1446 Park St	August 1986
1987	HPC #87-01	Roser Park Historic District		July 1987
1988	HPC #88-01	Bethel A.M.E. Church	912 Third Ave N	April 1988
	HPC #88-02	Granada Terrace Historic District		April 1988
1989	HPC #88-03	St. Petersburg Woman's Club	40 Snell Isle Blvd	January 1989
1990	HPC #90-01	City Hall (Municipal Utilities Building)	175 Fifth St N	October 1990
	HPC #90-02	Carnegie Mirror Lake Library	280 Fifth St N	October 1990
1991	HPC #90-04	Tramor Cafeteria	123 Fourth St S	January 1991
	HPC #90-03	YMCA Building	116 Fifth St S	October 1991
	HPC #91-01	Benjamin Boone House	601 Fifth Ave N	October 1991
	HPC #91-02	State Theater	685-687 Central Ave	October 1991
	HPC #91-03	Fannye A. Ponder Council House Site	1835 Ninth Ave S	October 1991
1992	HPC #91-04	Comfort Station	300 Block of Second Ave NE	January 1992

Year	City File #	Building/Site	Address	Designation Date
1992	HPC #91-05	Maximo Park Archaeological Site		January 1992
	HPC #91-06	Glen Oaks Cemetery	2012 Auburn St S	February 1992
	HPC #92-01	Admiral Farragut Academy (Jungle Country Club)	501 Park St N	November 1992
1993	HPC #92-02	First Congregational Church	240 Fourth St N	January 1993
	HPC #92-03	Seaboard Coastline Railroad Station	420 22nd St S	April 1993
	HPC #93-01	St. Petersburg Lawn Bowling Club	536 Fourth Ave N	April 1993
	HPC #93-02	Dennis / McCarthy Hotel	326 First Ave N	April 1993
	HPC #93-03	First United Methodist Church	212 Third St N	April 1993
	HPC #93-04	Bayboro House	1719 Beach Drive SE	October 1993
	HPC #93-05	Melrose Clubhouse	1801 Melrose Ave	November 1993
1994	HPC #93-07	Bay Gables	136 Fourth Ave NE	January 1994
	HPC #93-08	Sunset Golf and Country Club Clubhouse	600 Snell Isle Blvd N	February 1994
	HPC #94-01	St. Petersburg Shuffleboard Club	559 Mirror Lake Drive	March 1994
	HPC #93-06	Henry-Bryan House	146 Fourth Ave NE	April 1994
	HPC #94-02	Old Southeast Hexblock Sidewalk District	Old Southeast Neighborhood	August 1994
	HPC #94-03	Coliseum	535 Fourth Ave N	September 1994
	HPC #94-04	Mercy Hospital	1344 22nd St S	December 1994
	HPC #94-05	Manhattan Casino	642 22nd St S	December 1994
	HPC #94-06	First Baptist Church	120 Fourth St N	December 1994
	HPC #94-07	Rose Garden House	2955 Central Ave	December 1994
	HPC #94-08	Flori-de-Leon Apartments	130 Fourth Ave N	December 1994
HPC #94-09	C. Perry Snell House	501 Second St S	December 1994	
1995	HPC #95-01	Thomas Whitted House	656 First St N	March 1995
	HPC #95-02	Robert West House	101 Sixth Ave NE	June 1995
	HPC #95-03	Princess Martha Hotel	401 First Ave N	October 1995
	HPC #95-05	Green-Richman Arcade	689 Central Ave	September 1995

<b>Year</b>	<b>City File #</b>	<b>Building/Site</b>	<b>Address</b>	<b>Designation Date</b>
<b>1996</b>	HPC #96-01	S.H. Kress Building	475 Central Ave	September 1996
	HPC #96-02	William L. Rawls House	734 Grove St N	October 1996
<b>1997</b>	HPC #96-03	Boyce Guest House	205 Sixth Ave NE / 635 Bay St NE	March 1997
	HPC #96-04	Harlan Hotel	15 Eighth St N	March 1997
	HPC #97-01	Robert Lavery House	236 17th Ave SE	June 1997
	HPC #97-02	Dr. Robert Swain Dental Office	1501 22nd St S	September 1997
	HPC #97-03	Swain Apartments	1511 22nd St S	September 1997
	HPC #97-04	Ponce de Leon Hotel	95 Central Ave	November 1997
<b>1998</b>	HPC #97-06	Ninth Street Bank & Trust Co.	895 Central Ave	May 1998
	HPC #98-01	St. Petersburg High School at Mirror Lake	701 Mirror Lake Drive N	April 1998
	HPC #98-02	Hotel Cordova	253 Second Ave N	April 1998
	HPC #98-03	Turner's Sunken Gardens	1825 Fourth St N	May 1998
	HPC #98-04	Trinity Presbyterian Church / Happy Worker's Day Nursery	902 19th St S	October 1998
	HPC #98-05	Women's Town Improvement Association	336 First Ave N	October 1998
	HPC #98-06	Domestic Science & Manual Training School	440 Second Ave N	October 1998
<b>1999</b>	HPC #98-07	Ernest H. Lewis House	1604 22nd Ave S	January 1999
	HPC #98-08	St. Petersburg Federal Savings and Loan	556 Central Ave	January 1999
	HPC #99-01	Hoxie-Day Gravesites	5300 19th St N	August 1999
	HPC #99-03	Bruce Blackburn House	1422 22nd Ave S	December 1999
<b>2001</b>	HPC #01-01	Pennsylvania Hotel	300 Fourth St N	March 2001
	HPC #00-01	Tenth Street Church of God	207 10th St N	July 2001
	HPC #00-02	Mari-Jean Hotel	2349 Central Ave	July 2001
	HPC #00-03	Royal Theater	1011 22nd St S	October 2001
<b>2002</b>	HPC #02-02	Emerson Apartments	305 Fifth St S	August 2002

Year	City File #	Building/Site	Address	Designation Date
2002	HPC #02-03	Clyde Remington House	602 24th Ave N	October 2002
2003	HPC #02-04	Robert McCutcheon House	4727 Sixth Ave N	March 2003
	HPC #02-07	Wellington Lake House	619 65th St S	March 2003
	HPC #02-10	Pinellas Point Mound	1811-1827 Mound Place S	March 2003
	HPC #03-01	American Maid Ice Cream Company Building	1601 Third St S	April 2003
	HPC #02-08	Publix Groceries	1720 16th St N	October 2003
2004	HPC #04-01	Euclid Church of Christ	919-921 10th Ave N	April 2004
	HPC #02-01	Nolen Grocery	2300 First Ave N	April 2004
	HPC #04-02	Ainsworth House	3800 Dr. M.L.K. Jr. St N	July 2004
	HPC #04-03	Almon Jones-Jay Black House	3624 Dr. M.L.K. Jr. St N	July 2004
2006	HPC #05-01	Monticello Apartments	750 Third St N	January 2006
	HPC #06-11	Hangar #1 Albert Whitted Municipal Airport	341 Eighth Ave SE	December 2006
2007	HPC #07-03	Sunset Hotel	7401 Central Ave	October 2007
2008	HPC #07-01	Dodd Residence	103 Wildwood Lane SE	February 2008
	HPC #08-01	James Henry Residence	950 12th St N	October 2008
	HPC #07-02	Crescent Lake Water Tower	1320 Fifth St N	December 2008
2009	HPC #08-02	Merhige Residence	404 Sunset Drive S	January 2009
	HPC #09-01	McKeage Residence	209 Park St S	April 2009
	HPC #09-02	St. Peter's Episcopal Church	140 Fourth St N	December 2009
	HPC #09-03	Ridgely Residence	600 Beach Drive NE	August 2009
	HPC #09-06	Jordan Elementary School	2392 Ninth Ave S	December 2009
2010	HPC #09-04	Detroit Hotel	201-215 Central Ave	March 2010
	10-90300001	Pace Residence	705 16th Ave NE	May 2010
	HPC #09-05	Jones-Laughner Residence	556 Beach Drive NE	June 2010

Year	City File #	Building/Site	Address	Designation Date
2011	11-90300001	Jennie Hall Pool Complex	2650 10th Ave S	December 2011
	11-90300002	Mathis Residence	7321 Third Ave N	December 2011
	11-90300003	Lantern Lane Apartments	340 Beach Drive NE	December 2011
2012	12-90300001	First Church of Christ, Scientist (Palladium Theater)	253 Fifth Ave N	May 2012
	12-90300002	Maximo Park Archaeological Site - Expansion of Boundaries	6600 34th St S	July 2012
	12-90300003	Maurice & Thelma Rothman Residence	1018 Park St N	September 2012
2013	13-90300002	Binnie-Bishop Hotel	256 First Ave N	August 2013
	13-90300003	Washington-Harden Grocery and Moure Building	901-903 22nd St S and 909-913 22nd St S	October 2013
	13-90300004	Custer-Moore Residence	1014 Alhambra Way S	November 2013
2014	14-90300002	Lang's Bungalow Court Historic District		June 2014
	14-90300001	Cade Allen Residence	3601 Foster Hill Drive N	September 2014
	14-90300004	Euclid Elementary School	1090 10th St N	September 2014
2015	15-90300002	Acheson-Mackey Residence	3900 Dr. M.L.K. Jr. St N	November 2015
2016	16-90300001	Sargent House	806 18th Ave NE	May 2016
2017	16-90300007	Gassman House	630 14th Ave S	January 2017
	16-90300005	Burnside House	136 Fifth Ave N	February 2017
	16-90300008	700 Block of 18th Avenue Northeast District		March 2017
	17-90300003	Kenwood Section – Seminole Park Local Historic District		November 2017
	17-90300004	North Shore Section - 200 Block of 10th Ave. NE. Local Historic District		November 2017

Year	City File #	Building/Site	Address	Designation Date
2018	17-90300005	North Shore Section - Welch's Mediterranean Row Local Historic District		April 2018
	18-90300001	Kenwood Section - Southeast Kenwood Local Historic District		June 2018
	18-90300004	Foster Grove House	3650 Foster Hill Drive N	August 2018
	18-90300006	New Redeemer Evangelical Lutheran Church	4355 Central Ave	September 2018
	18-90300007	Roser Park Local Historic District Expansion	801-829 10th Ave S	September 2018
	18-90300005	Huggins-Stengel Field	1320 Fifth St N	October 2018
2019	18-90300008	Kenwood Section - NW Kenwood Local Historic District		April 2019
	19-90300007	Grace Lutheran Church / American Baptist Church of the Beatitudes	2812 Eighth St N	October 2019
	19-90300004	Dr. Gilbert H. Leggett Building	2154 9 <sup>th</sup> Ave S	December 2019
2020	19-90300008	Westminster Presbyterian Church	126 11 <sup>th</sup> Ave NE	March 2020
	20-90300001	Smalley-Green Auto Building	1180 Central Ave	October 2020
	20-90300002	Glenoak Elementary School	1900 12 <sup>th</sup> St S	November 2020
2021	19-90300002	Kenwood Section – SW Central Kenwood Local Historic District		April 2021
	21-90300002	Axford House	4705 5 <sup>th</sup> Ave N	May 2021
	21-90300001	Jordan Park Administration Building	2240 9 <sup>th</sup> Ave S	July 2021
	21-90300005	Polish American Society Clubhouse	1343 Beach Dr SE	October 2021
2022	21-90300006	Peninsular Fruit Company Building	10000 Gandy Blvd NE	January 2022



# Certificate of Appropriateness Approval Matrix

(City Code Section 16.30.0070.2.6, updated February 10, 2015)

	CONTRIBUTING & INDIVIDUAL LANDMARKS			NON-CONTRIBUTING		
	Staff	CPPC	No Review	Staff	CPPC	No Review
<b>ADDITIONS</b>						
All		X			X	
<b>ARCHAEOLOGY</b>						
Ground disturbing activities	Certificate to Dig Required			Certificate to Dig Required		
<b>CANVAS AWNINGS</b>						
Installation, removal, or alterations	X			X		
<b>CLEANING</b>						
1. Pressure washing, less than 100 psi			X			X
2. Other methods and applications	X			X		
<b>CARPORTS and PORTE COCHERES</b>						
All alterations		X		X		
<b>DECKS, PATIOS</b>						
1. With a roof		X		X		
2. Without a roof	X			X		
<b>DEMOLITIONS</b>						
1. Primary structures		X			X	
2. Accessory structures, historic		X		X		
3. Accessory structures, non-historic	X			X		
4. Historic additions		X			X	
5. Non-historic additions	X			X		
<b>DOORS, ENTRIES, AND GARAGE DOORS</b>						
1. Same materials, style, and size	X			X		
2. Change in materials or style		X		X		
3. Change in openings		X		X		
4. Entry features	X			X		
5. ADA requirements	X			X		
6. Other alterations	X			X		
<b>DRIVEWAYS</b>						
1. Change in materials	X			X		
2. Change in size or configuration	X			X		
3. New or relocated driveway	X			X		
<b>EXTERIOR WALL FINISH</b>						
1. Removal of non-historic material	X			X		
2. All other finishes (including painting of an originally unpainted surface)	X			X		
3. Waterproofing	X			X		
<b>FOUNDATIONS</b>						
1. Same material, style, and size	X			X		
2. Change in material, style, or size		X		X		
3. Sidewalk vault lights	X			X		
<b>INTERIOR ALTERATIONS</b>						
Ad Valorem Tax Exemption Apps ONLY	X					X
<b>LANDSCAPE FEATURES</b>						
1. Arbors, pergolas, and gazebos	X			X		
2. Permanent water features	X			X		
3. Lighting	X			X		
4. Sidewalks	X			X		
5. Walkways	X			X		
6. Planting or removal, non-historic vegetation			X			X
7. Alteration, planting, removal, historic vegetation	X			X		
8. Other	X			X		1



# Certificate of Appropriateness Approval Matrix

(City Code Section 16.30.0070.2.6, updated February 10, 2015)

	CONTRIBUTING and INDIVIDUAL LANDMARKS			NON-CONTRIBUTING		
	Staff	CPPC	No Review	Staff	CPPC	No Review
<b>MECHANICAL SYSTEMS</b>						
1. Electrical, plumbing, pool equipment	X			X		
2. HVAC	X			X		
3. Solar Panels	X			X		
4. Other	X			X		
<b>NEW CONSTRUCTION</b>						
All		X			X	
<b>PAINTING</b>						
1. Painting previously painted surfaces			X			X
2. Changes in paint color			X			X
<b>PLAQUES AND MARKERS</b>						
All	X			X		
<b>POOLS</b>						
1. Above ground pools		X		X		
2. In ground pools	X			X		
3. Pool screen enclosures	X			X		
<b>PORCHES AND BALCONIES</b>						
1. Open an enclosed porch	X			X		
2. Enclose a porch		X		X		
3. Alterations		X		X		
<b>RELOCATION</b>						
1. Into a Local Landmark district		X			X	
2. Other		X		X		
<b>RESTORATION (A return to the original based on historic evidence as originally designed and constructed.)</b>						
All	X			X		
<b>ROOF and CHIMNEYS</b>						
1. Same materials and shape	X			X		
2. Change in materials		X		X		
3. Change in shape		X		X		
4. Other alterations		X		X		
<b>SIGNS</b>						
All signage	X			X		
Street numbers			X			X
<b>SHEDS</b>						
Less than 100 sq. ft.	X			X		
<b>SHUTTERS</b>						
1. Removable shutters	X			X		
2. Permanent shutters	X			X		
<b>SITE WALLS AND FENCES</b>						
1. Walls or fences behind the front façade	X			X		
2. Walls or fences in front of or equal to front façade		X		X		
3. Retaining walls	X			X		
4. Demolition, historic		X		X		
5. Sea walls	X			X		
<b>WINDOWS</b>						
1. Same materials, style, and size	X			X		
2. Change in materials or style		X		X		
3. Change in openings		X		X		

**NOTES:**

Any formal appeal of a City staff determination shall be acted upon first by the City's Community Planning and Preservation Commission ("CPPC"). Any formal appeal of a CPPC determination shall be acted upon in accordance with Section 16.70.015 titled, "Decisions and Appeals Table."

The POD may refer a COA application for public hearing review where the request is not substantially similar to another action already listed, or if the request is non-traditional, may set precedent and therefore requires the benefit of public deliberation and a CPPC decision.

**ST. PETERSBURG CITY COUNCIL**

**Meeting of March 31, 2022**

**TO:** The Honorable Gina Driscoll, Chair and Members of City Council  
The Honorable Sharon Winters, Chair, and Members of the Community Planning and Preservation Commission

**FROM:** Derek Kilborn, Manager, Urban Planning and Historic Preservation Division

**SUBJECT: Third Party Initiated Designation for Local Historic Landmark Designation.**

The following research was originally compiled for a meeting of the City Council on May 16, 2019, relating to the third-party application process for local historic landmark designations. The original memorandum follows in [black] with new updates highlighted in [red].

To assist your evaluation of third-party applications, Historic Preservation staff has prepared the following inventory:

- 119 Total no. of individual, local landmarks**
- 38 Total no. of third-party applications**
- 9 Total no. of third-party applications, owner opposed, approved**
- 6 Total no. of third-party applications, owner support, approved**
- 7 Total no. of third-party applications, owner opposed, denied**
- 1 Total no. of third-party applications, owner opposed, deferred**
- 14 Total no. of third-party applications, owner opposed, withdrawn**
- 1 Total no. of third-party applications, owner opposed, incomplete app**

**Nine (9) Third-Party, Owner Opposed, Approved:**

- 1992 - Glen Oaks Cemetery
- 1993 - Henry-Bryan House
- 1994 - Mercy Hospital
- 1998 - Sunken Gardens
- 2010 - Detroit Hotel
- 2010 - Jones-Laughner Residence
- 2013 - Binnie-Bishop Hotel
- 2015 - Acheson-Mackey Residence
- 2017 - Virginia Burnside House

**Six (6) Third-Party, Owner Support, Approved:**

- 1994 - Shuffleboard Club
- 1997 - Ninth Street Bank & Trust Co.
- 1998 - Hoxie-Day Gravesites
- 1998 - Women's Town Improvement Assoc.
- 2011 - Jennie Hall Pool
- 2018 - Huggins-Stengel Field

**Seven (7) Third Party, Owner Opposed, Denied**

- 1987 - The Soreno Hotel
- 1987 - Princess Martha Hotel <sup>1</sup>
- 2010 - Blocker Residence
- 2014 - North Ward School
- 2016 - Central National Bank / Pheil Hotel & Theatre
- 2018 - Doc Webb Estate
- 2018 - Holiday Motel

**One (1) Third Party, Owner Opposed, Deferred:**

- 1987 - Dennis/McCarthy Hotel <sup>2</sup>

**Fourteen (14) Third-Party, Owner Opposed, Withdrawn:**

- 2006 - Vinoy-Laughner Thematic Listing:
  - 136-138 10<sup>th</sup> Avenue NE
  - 145 14<sup>th</sup> Avenue N
  - 532 Beach Drive NE
  - 556 Beach Drive NE
  - 209 13<sup>th</sup> Avenue NE
  - 756 Bay Street NE
  - 716 1<sup>st</sup> Street N
- 2008 - Crislip Arcade
- 2013 - Endicott Residence
- 2017 - Henry House
- 2017 - Pricer House
- 2017 - Aiken House
- 2018 - Grace Lutheran Church/American Baptist Church of Beatitudes
- 2021 – St. Petersburg Hotel

**One (1) Third-Party, Owner Opposed, Application Determined Incomplete**

- 2018 - Harold Smith House<sup>3</sup>

**Special Note:**

Five (5) applications could not be confirmed using the digital record. Additional research is required to determine whether the who initiated the following applications and whether they include owner support:

- HPC 86-07
- HPC 02-05
- HPC 02-06
- HPC 02-09

---

<sup>1</sup>The Princess Martha Hotel was later designated with owner support after a City initiated application in 1995.

<sup>2</sup> The Dennis/McCarthy Hotel was later designated with owner support after a City initiated application 1993.

<sup>3</sup> Third party application filed but deemed incomplete by City staff. Demolition permit was released to the property owner and subject building subsequently demolished.

HPC 06-01

For your information and context, third party applications are not the only application type to have owner opposition. The following applications also included owner opposition:

**Seven (7) City-Initiated, Owner Opposed, Application Approved:**

- 1986 - St. Petersburg High School
- 1990 - YMCA Building
- 1991 - State Theater
- 1992 - Seaboard Coastline RR Station
- 1992 - Jungle Country Club/Admiral Farragut Academy
- 1994 - Manhattan Casino
- 1995 - Southside Junior High School

**One (1) City-Initiated, Owner Opposed, Application Denied:**

- 1997 - Crislip Arcade

**One (1) City-Initiated, Owner Neutral, Application Approved:**

- 2020 – Westminster Presbyterian Church

**Three (3) City-Initiated, Owner Opposed, Application Deferred:**

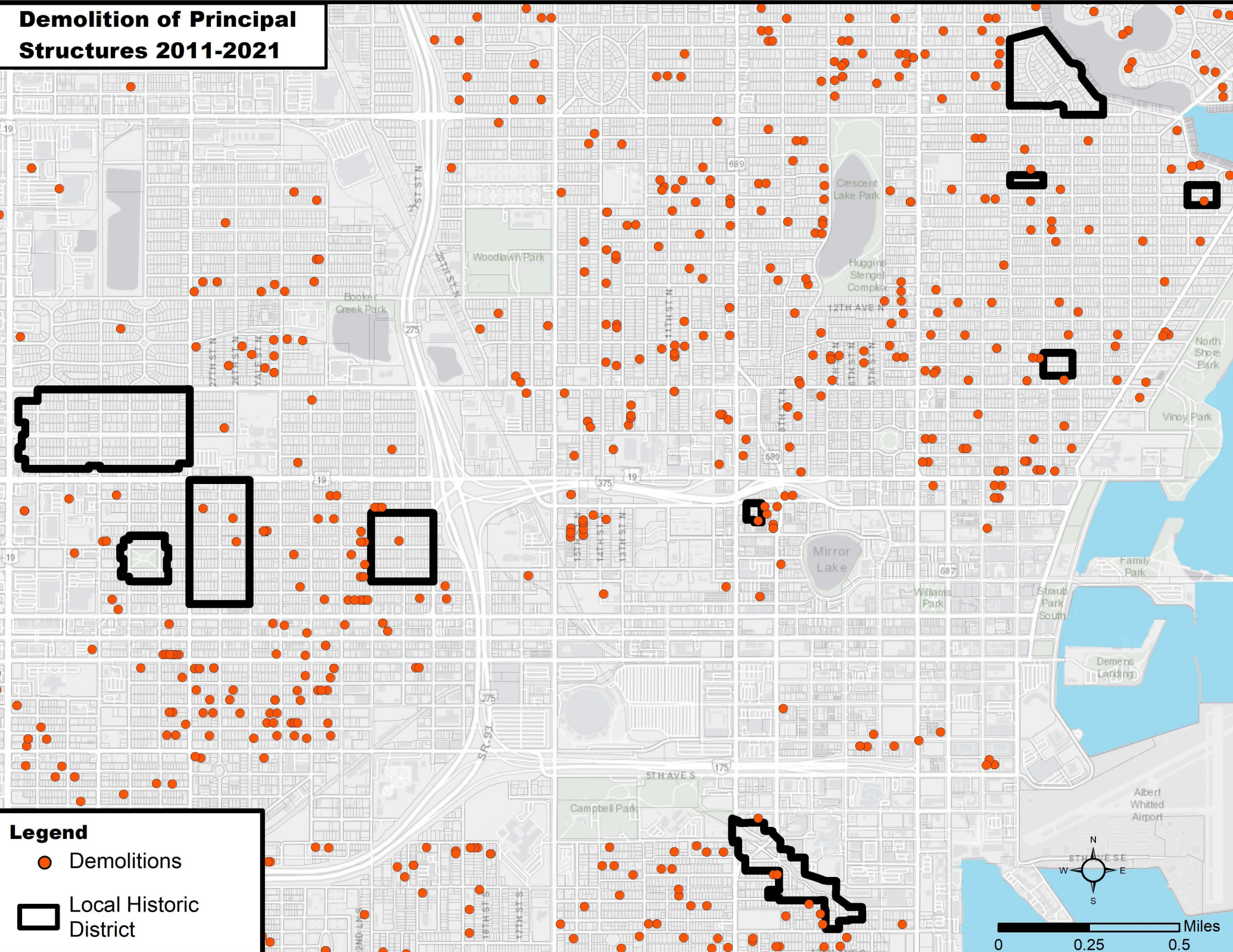
- 2006 - Detroit Hotel <sup>4</sup>
- 2006 - First Church of Christ Scientist aka Palladium Theater <sup>5</sup>
- 2006 - Blocker Residence

---

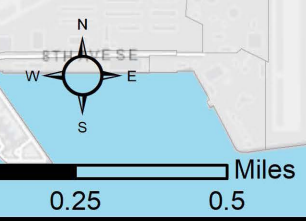
<sup>4</sup> The Detroit Hotel was later designated after a third-party initiated application with owner opposition in 2009.

<sup>5</sup> The First Church of Christ Scientist aka Palladium Theater was later designated with owner consent after a City initiated application in 2012.

# Demolition of Principal Structures 2011-2021



- Legend**
- Demolitions
  - Local Historic District





## CITY OF ST. PETERSBURG, FLORIDA

# LIST OF POTENTIALLY ELIGIBLE PROPERTIES

Urban Planning and Historic Preservation Division  
Planning and Development Services Department  
City of St. Petersburg  
Municipal Services Center  
One Fourth Street North, 8<sup>th</sup> Floor  
St. Petersburg, Florida 33701

## Properties Potentially Eligible for Local Landmark Designation

	Property Name	Alternative Name	Address
1	Preston Hotel/Alden Hotel	McCrary's 5 & 10	425-45 Central Avenue
2	Florida Arcade		449 Central Avenue
3	Lerner Stores		465 Central Avenue
4	Suwannee Hotel		501 First Avenue No.
5	St. Mary's Catholic Church		515 Fourth Street So.
6	Unitarian Universalist Church		719 Arlington Avenue No.
7	Trinity Lutheran Church		467 Fourth Avenue No.
8	Christ United Methodist Church		451 First Avenue No.
9	YWCA	Endicott Funeral Homes	655 Second Avenue So.
10	Waterfront Park Apts. Coop		483-99 First Street So.
11	Sarven Apartments		249 Fourth Avenue No.
12	Heritage Hotel		234 Third Avenue No.
13	Tomlinson Adult Ed Center	Tomlinson Vocational School	296 Mirror Lake Drive No.
14	Lyceum	Mirror Lake Christian Church	302 Grove Street No.
15	Randolph Hotel		200 Fourth Street No.
16	Orange Blossom Catering		220 Fourth Street No.
17	Coburn Apartments		232 Fourth Street No.
18	Poulsen Apartments		215 Fifth Street No.
19	St. Charles Hotel		243-45 Central Avenue
20	St. James Hotel		235 Central Avenue
21	Jannus Landing		200 First Avenue No.
22	Tamiami Hotel		242 First Avenue No.
23	Vinoy House		532 Beach Drive NE
24	Fire Station #1		128 Third Street So.
25	Crislip House	Tessmer Apartments	205 Fourth Avenue No.
26	Bussey House		211 Fourth Avenue No.
27	Davenport House		259 Fourth Avenue No.
28	Endicott House		233 Third Street No.
29	Victoria Apartments		341 Third Street No.

30	William Park and Bandshell		330 Second Avenue No.
31	Jungle Prado		1700 Park Street No.
32	William and Mary Hotel	YWCA Young Ladies' Residence	811 Jackson Street No.
33	Woodlawn Elementary School		1600 16 <sup>th</sup> Street No.
34	Free Clinic Building	Post Office Distribution Center	863 Third Avenue No.
35	C. Perry Snell's 3 <sup>rd</sup> Residence		375 Brightwaters Blvd. NE
36	C. Perry Snell's 4 <sup>th</sup> Residence		360 Coffee Pot Riviera NE
37	Marbleside Building	SP Federal Savings & Loan	33 Sixth Street So.
38	Snell Isle Apartments		222 Snell Isle Blvd. NE
39	Hegrado Apartments		200-210 22 <sup>nd</sup> Avenue NE

**Notes: St. Petersburg Register of Historic Places**  
The following addresses were formally listed as potentially eligible properties.  
They have since been designated local landmarks.

	<b>Property Name</b>	<b>Alternative Name</b>	<b>Address</b>
1	Detroit Hotel		201-215 Central Avenue
2	Gray's Hotel	Lantern Lane Apartments	340 Beach Drive NE
3	St. Peter's Episcopal Church		140 Fourth Street No.
4	Palladium Theater	First Church of Christ Scientist	253 Fifth Avenue No.
5	Bishop Hotel		256 First Avenue No.
6	Hangar 1, Albert Whitted Airport		107 Eighth Avenue So.east
7	Jordan Elementary School		2390 Ninth Avenue So.
8	Euclid Elementary School		1015 Tenth Avenue No.
9	Water Tower		Crescent Lake
10	Sunset Hotel		7401 Central Avenue

## Notes: Demolitions

The following addresses were formally listed as potentially eligible properties.  
 They have since been demolished; these properties are no longer subject  
 to the rules regulating potentially eligible properties.

	Property Name	Alternative Name	Address
1	Central National Bank	Wachovia Bank	400 Central Avenue
2	Pheil Hotel	Wachovia Bank	410 Central Avenue
3	George Gandy House	Mullet Farm	2700 Driftwood Road So.
4	Holiday Motel		2402-36 Fourth Street No.
5	Mitchell Apartments *	Stanton Apartments	211 Third Street No.

\* *Demolition pending.*

## Notes: Designation Applications Denied

The following properties were formally listed as potentially eligible properties,  
 processed for local landmark designation but denied.  
 While included here for information purposes only, the properties  
 are no longer subject to the rules regulating potentially eligible properties.

	Property Name	Alternative Name	Address
1	Mansion by the Bay	Blocker Residence	145 Fourth Avenue NE



**CITY OF ST. PETERSBURG, FLORIDA**

# **ST. PETERSBURG LEGACY BUSINESSES**

Urban Planning and Historic Preservation Division  
Planning and Development Services Department  
City of St. Petersburg  
Municipal Services Center  
One Fourth Street North, 8<sup>th</sup> Floor  
St. Petersburg, Florida 33701



# LEGACY BUSINESSES

The identification and recognition of legacy businesses is an approach to preservation that celebrates the significance and contributions of longstanding local businesses, not just the spaces they inhabit. These legacy businesses have helped shape the character of the neighborhood they're located in and continue to serve it today. A legacy business is defined as one that has been in existence for 50 years or more. If you know a legacy business not included in the registry, please contact: [history@stpete.org](mailto:history@stpete.org).

ADDRESS	NAME	TYPE	ESTABLISHED
490 1st Ave. So.	<b>Times Publishing: Tampa Bay Times</b>	Newspaper	1884
100 2nd Ave. No.	<b>St. Petersburg Area Chamber of Commerce</b>	Business	1899
1825 4th St. No.	<b>Sunken Gardens</b>	Attraction	1903
2018 4th St. No.	<b>Rogers Cleaners</b>	Cleaners	1916
719 Central Ave	<b>Morean Arts Center</b>	Art	1917
299 Dr. MLK Jr. St. No.	<b>George F. Young Engineering</b>	Engineering	1919
250 Dr. MLK Jr. St. No.	<b>Coney Island Grill</b>	Restaurant	1926
2025 Central Ave	<b>Haslams Book Store</b>	Retail	1933
100 2nd Ave. So., #701	<b>Fisher &amp; Sauls, P.A.</b>	Law	1936
2714 Dr. MLK Jr. St. S	<b>Harvard Jolly Architecture</b>	Architects	1938
3121 Central Ave	<b>Rayco Upholstery</b>	Service	1942
1631 4th St. No.	<b>Bob Lee's</b>	Auto Repair	1946
2719 Central Ave	<b>Beyersdorf Co.</b>	Wallpaper	1947
233 Central Ave	<b>Mastrys Bar</b>	Bar	Pre-1948
1912 Central Ave	<b>Goodyear Rubber Products</b>	Retail	1948
550 Central Ave	<b>The Emerald Bar</b>	Bar	1950
358 22nd Ave. So.	<b>The Chattaway</b>	Restaurant	1951
3920 6th St. So.	<b>Munch's Sundries and Restaurant</b>	Restaurant	1952
2129 1st Ave. No.	<b>Bringe Music</b>	Retail	1956
3500 4th St. No.	<b>El Cap</b>	Restaurant	1964
No address	<b>Weekly Challenger</b>	Newspaper	1967



**CITY OF ST. PETERSBURG, FLORIDA**

# **ST. PETERSBURG MARKERS and MONUMENTS**

Urban Planning and Historic Preservation Division  
Planning and Development Services Department  
City of St. Petersburg  
Municipal Services Center  
One Fourth Street North, 8<sup>th</sup> Floor  
St. Petersburg, Florida 33701



# MARKERS and MONUMENTS

The following table contains information about historic markers, plaques and monuments in the City of St. Petersburg. This table was originally created by Paul Boudreaux, in Nov. 2009, for St. Petersburg Preservation, Inc. This table will be expanded and lengthened on a continuing basis. Some plaques are on historic structures; others are free-standing and often do not relate to specific structures. Entries are listed in alphabetical order by Place or Location. Entries are usually listed by the old, historic name, if any. The current name of the place, if different, is also shown.

The most common type of marking found on buildings in the city is the “contributing structure” plaque. These were awarded fairly liberally in 2004, and indicate that the building is a “contributing structure of the downtown historic district.” The primary criteria for being awarded such a plaque was that the building was 50 years old when the plaques were distributed. Some of the buildings may not have any great historic significance other than that. Another fairly common plaque is the St. Pete Centennial plaque. Most of these plaques commemorate structures that are no longer in existence. They are small plaques usually set into the sidewalk at or near the site of the historic structure. They were installed in 1988.

	Location	Marker, Plaque, or Monument	Remarks
1.	1 <sup>st</sup> Avenue NE, 100 block, n. side; south side of The Florencia.	Historic marker commemorates the Soreno Hotel.	Marker says: "The Soreno Hotel - In 1923, construction began on Soren Lund's million dollar Mediterranean Revival hotel. .... It encompassed the north half of the 100 block of Beach Drive. .... Geoffrey Lloyd Preacher designed the hotel. The Soreno ... was finished ... prior to the opening of the 1924 tourist season. Its completion established a new elegance on the downtown waterfront. The Soreno was the first of 10 grand hotels built between 1923 and 1926 ... During W.W. II, the Soreno was occupied by servicemen, then operated as a winter season hotel .... It was demolished in 1992." St. Petersburg Heritage Trust – JNC Communities – Fla. Dept. of State – F-422 – 2000.
2.	2 <sup>nd</sup> Avenue NE, s. side of the street, s. of Spa Beach.	Bronze plaques commemorate first scheduled airline flight and Tony Jannus.	Two plaques on stone monument give historical background and details about the flight. The first says "From this site, the St. Petersburg - Tampa Airboat Line, the world's first scheduled airline, began regular flights between St. Petersburg and Tampa, Jan. 1, 1914" – dedicated Dec. 4, 1953. The second says "In commemoration of the world's first commercial airline flight by Tony Jannus, on Jan. 1, 1914, from St. Petersburg to Tampa" – erected Jan. 1, 1938.
3.	2 <sup>nd</sup> Avenue NE, s. side, at beginning of the approach to the pier.	Statue of Christopher Columbus	Stone sculpture of Christopher Columbus. Base is inscribed on two sides. First side says "Christopher Columbus – erected by St. Petersburg Council 2105, Knights of Columbus, May 1960." Other side says "Ladies of the Knights Fourth Degree assembly Italian American club Sons of Italy" and lists 40 names.
4.	2 <sup>nd</sup> Street N – house number 436.	Has a "contributing structure" plaque.	Bronze plaque notes the building as being a "contributing structure of the downtown historic district." Formerly the studio of Philip Graham II, photographer.
5.	2 <sup>nd</sup> Street N – house number 525.	Has a "contributing structure" plaque.	Bronze plaque notes the building as being a "contributing structure of the downtown historic district." Currently a private residence.
6.	4th Street S, ea. side of street, betw. Taylor Ave. & Bayside Dr.	Historic marker commemorates establishment of 'Pinellas Village'	Marker says: "One fourth mile east from this point is the site of the first settlement in 1857 and the first post office in 1876 of St. Petersburg, then called Pinellas." Erected by Princess Hirrihigua chapter, Daughters of the American Revolution - 1937"
7.	Albert Whitted Park, south side, at fence separating park from airfield.	Historic marker commemorating history of local early aviation. (Very much like plaques along 2 <sup>nd</sup> Ave. N, pier approach road.)	Commemorates history of early aviation: "World's first Regularly Scheduled Airline: Within a decade after the Wright Bros' famous 1903 flight, aviation history was being made in Florida. The first transcontinental flight landed in Jacksonville in 1912 .... And the St.-Petersburg-Tampa Airboat Line, the world's first regularly scheduled commercial airline, began service in 1914. Tom Benoist .... Started this ... airline .... Tony Jannus, Benoist's head pilot, took the airline's first passenger .... Across the bay in a bi-plane, Jan. 1, 1914. ... A few days later, a light cargo was flown across the bay. The activities of this airline demonstrated that air flight was practical." Sponsored by the City of St. Petersburg in cooperation with the Department of State. – F-274 – 1976. (plaque was erected in 2009).
8.	Baseball Boulevard, from Al Lang Field, n. along 1 <sup>st</sup> St. S. to Central	Some 70 or so bronze plaques, mostly mounted on concrete pedestals, some put	There is one plaque for each year of baseball spring training in St. Petersburg, from 1914 to 1999. Plaques start at Al Lang Field, & go north along 1 <sup>st</sup> St. S. to Central

	Location	Marker, Plaque, or Monument	Remarks
	Ave., then w. on the south side of Central Ave. to Tropicana Field.	into the sidewalk. Also, bronze bust of Al Lang, on concrete pedestal, at start of the boulevard, and a large bronze plaque on the wall of Tropicana Field, at the end of the 'boulevard'..	Ave., then west to Tropicana Field. (Note: Paul B. has a MS Word document called <b>Baseball Boulevard</b> which contains more information about the plaques that commemorate spring training in the city, 1914-1999. Paul B. has photos of these markers, and of most of the plaques on Baseball Boulevard.)
9.	Bayshore Drive, across from the Mahaffey Theatre.	Bronze plaque marks Raymond James Bayside Fountain & Gardens	Plaque says 'In grateful appreciation to Tom and Mary James - The Raymond James Bayside Fountain and Gardens'
10.	Bayshore Drive, at the Raymond James bayside fountain & gardens	Stone monument to Ondoro Osoro & record for the 10-mile run.	Monument says: "In commemoration of the world record for 10 miles: 45 minutes, 37 seconds, set at this location by Ondoro Osoro of Kenya, at the inaugural Southtrust Running Festival, Oct. 18, 1997, St. Petersburg, Fla."
11.	Bayshore Drive, east side, across from progress Energy Park.	Bronze plaque commemorates the launching of the 'Titanic'.	Plaque says 'A grateful St. Petersburg commemorates the site of the launching of the 'Titanic' on Oct. 29, 1976, and salutes these gallant and far-sighted unselfish citizens...' (Plaque was erected through the influence of St. Pete Yacht club members to commemorate humorous launching of an old yacht.)
12.	Bayshore Drive, east side, at foot of Central Avenue.	Bronze plaque marks the Stonewall Jackson Memorial Highway.	Plaque says: "This marks the terminal of the Stonewall Jackson Memorial Highway. Erected by Dixie Chapter, United Daughters of the Confederacy – St. Petersburg, Fla. - Jan. 22, 1939." REMOVED: AUGUST 2017
13.	Central Ave., at NE corner with 3 <sup>rd</sup> St., in sidewalk.	Centennial plaque commemorates first volunteer library in the city.	Plaque says "St. Petersburg's first voluntary library was located on this site in 1899. Donated by the Friends of the Library, Inc., June 8, 1988."
14.	Central Ave., at SW corner with 2 <sup>nd</sup> St., in sidewalk.	Centennial plaque commemorates first general store in St. Petersburg.	Plaque says "St. Petersburg's first general store was built on this site, in 1888. Donated by the Harper family, descendants on Gen. John C. Williams, June 8, 1988."
15.	Central Ave., at SW corner with 3 <sup>rd</sup> St., in sidewalk.	Centennial plaque about first telegraph office in St. Pete.	Plaque says "St. Petersburg's first telephone company was built on this site, in 1897. Donated by GTE Florida, June 8, 1988."
16.	Central Ave., in sidewalk, 200 block, north side.	Centennial bronze plaque commemorates the Detroit Hotel, St. Petersburg's first.	Plaque says "St. Petersburg's first hotel, the Detroit, was built on this site, 1988. Donated by Robert Barnes and William Pendergast, June 8, 1988." (The donation apparently refers to the funds required for the plaque.)
17.	Central Ave., in sidewalk, 400 block?, south side.	Centennial bronze plaque commemorates St. Petersburg Times	Plaque says: 'Saint Petersburg Florida 1988 Centennial - The St. Petersburg Times' first building was built on this site.
18.	Central Ave., near NW corner with 4 <sup>th</sup> St., in front of Shakolad, 401 Central.	Centennial plaque commemorates the first benches along Central Ave.	Plaque says "St. Petersburg's first benches were placed on this site, in front of Mitchell's real estate office, in 1908. Donated by the St. Petersburg Board of Realtors, June 8, 1988".
19.	Central Avenue, on the current Bank of America Tower, 200 Central Ave.	Bronze plaque identifies Progress Plaza.	Plaque says "One Progress Plaza – AD 1990 – Owner: Florida Progress Corp. – Developer: Talquin Development Co." Also lists engineers, architects, general contractors and owner's representative.
20.	Chamber of Commerce Building, formerly the Concord Building. 100 2 <sup>nd</sup> Avenue N.	Plaque describes the historical significance of the building.	Plaque (from 1986) says "The Concord Building – this historic building has been a significant part of St. Petersburg history for 60 years. It was part of the city's first boom, and now contributes to today's renaissance. ... east wing built 1927, west wing built 1942, .... Renovation completed, 1985."

	Location	Marker, Plaque, or Monument	Remarks
21.	City Hall Annex (formerly the Domestic Science & Manual Training School) 440 2nd Avenue N.	Sign and plaques on the oldest school building.	<p>1. Free-standing sign says “Domestic Science and Manual Training School – Built in 1901, the ... school is the oldest surviving school building in St. Petersburg. .... made possible by Edward H. Tomlinson, a prominent benefactor in St. Petersburg. The building has remained in public use... It is one of the first brick buildings constructed in St. Petersburg. The building was .... Placed on the National Register of Historic Properties in 1999. In 2004, the building was restored by the city...”</p> <p>2. Plaque on the building says “This historic building was once the Domestic science and Training School. It was renovated, and is now used as the City Hall Annex, 440 2<sup>nd</sup> Ave. N. It was dedicated Nov. 4, 2004..... This project was funded by the ‘penny for Pinellas’ one-cent sales tax.”</p> <p>3. Second plaque says “Domestic Science and Manual Training – founded by Edwin H. Tomlinson, 1902.”</p>
22.	Crescent Lake – Huggins-Stengel Field area, off 5th Ave. N.	Bronze plaques (2), side by side, commemorating Casey Stengel & Miller Huggins.	<p>1st plaque, to Miller J. Huggins, says “Miller J. Huggins, 1878-1929 – As a memorial and tribute to an outstanding sportsman and a splendid character who as ... resident of this city contributed to its fame and the betterment of baseball, the citizens of St. Petersburg dedicate this ground, which forever shall be known as Huggins Field.”</p> <p>2<sup>nd</sup> plaque, to Casey Stengel, says “To Charles Dillon ‘Casey’ Stengel – One of baseball’s most popular and widely known figures who ... won ten American league pennants ... this plaque is gratefully and affectionately dedicated.”</p>
23.	Demens Landing, at entry from Bayshore Drive.	Florida Heritage Site historic marker marks Demens Landing	Marker says: ‘This city park is located on the site of the first railroad pier in the city... Peter Demens (pronounced De-MENS) was a Russian nobleman, Pyotr Dementyev, who left Russia in 1881, came to Florida, and changed his name to Demens. He became an entrepreneur, investing in a sawmill..... later, he took control of the Orange belt railroad, which he extended from Sanford, Fla. To the west coast in 1888, to a town he named St. Petersburg.... Demens also built the first hotel, the Detroit.... And is considered one of the founders of the city. Demens Landing was dedicated as a city park to honor Demens in 1977” -- Florida history Site – Russian Heritage, inc. & the Fla. Dept. of State – F-241 -- 2000.’
24.	Demens Landing, east end, by the overlook.	Bronze plaque honors Peter Demens	Plaque says: ‘Peter Demens (Dementieff) the founder of St. Petersburg – 1888. Erected by Congress of Russian Americans 1979’
25.	Dennis Hotel (now the Williams Park Hotel) 326 1 <sup>st</sup> Avenue N.	Bronze plaque on the former Dennis Hotel.	<p>Plaque says: “The Dennis Hotel – 1925 – has been placed on the National Register of Historic Places.</p> <p>Plaque donated by First Florida Bank, N.A.”</p> <p>Plaque erected for Pinellas County diamond jubilee.</p> <p>The Dennis Hotel became the Kelly (awning still says Kelly), and now (2010) appears to be the Williams Park Hotel.</p>
26.	Driftwood neighborhood	Historic marker marks site of Abel Miranda home. (Erected by the Fla. Board of Parks & Historic memorials, 1961.)	Marker says: “In this vicinity stood the home of Abel Miranda, Seminole War veteran who moved to Pinellas County in the late 1850’s. In Feb., 1862, the union blockading squadron off Egmont Key sailed into big Bayou and attacked the home. It was burned, the animals killed, and the gardens destroyed. The Miranda family fled during the

	Location	Marker, Plaque, or Monument	Remarks
			action and no one was injured. This was the only armed conflict in Pinellas county during the War between the States. – Florida Board of Parks and Historic Memorials – F-90”
27.	Eckerd College 4200 54 <sup>th</sup> Ave. S.	Bust, with small plaque, in the Upham Administration Building.	Bust of Jack Eckerd, founder and benefactor of the college. Plaque says: “Presented to Eckerd College by Pride of Florida, in honor of Jack Eckerd, 1993.”
28.	First United Methodist Church 230 3 <sup>rd</sup> St N	New (2010) Historic marker & 3 older plaques:  3 older plaques	New historic marker says: The First United Methodist church was designed by architect James Baldwin and constructed by Charles Whitaker in 1926. It is the third Methodist church on this site, with the first dating to 1902. The church is Late Gothic Revival in style ... The church interior includes a large U-shaped balcony facing the altar. The leaded Tiffany-style stained glass windows were manufactured in 1926 ... There are 10 windows in the east and west walls of the sanctuary ... the large southern window is a reproduction of Leonardo da Vinci’s ‘The last Supper’. The church’s lofty bell tower contains 15 bronze bells ...” -- St. Petersburg Preservation --- City of St. Petersburg First older plaque says “A commemoration for the past 100 years of service. A dedication for the future. First united Methodist church, St. Petersburg Centennial Celebration, 1889-1989 Second plaque says “Designated a historic site in 1990, this building has been listed on the national Register of historic places by the U.S. Department of the Interior. First United Methodist Church, constructed 1926.” Third plaque says: “1965 – Front entrance beautification ....”
29.	Flori-de-Leon Apartments 130 Fourth Ave. N.	Has a “contributing structure” plaque.	Bronze plaque notes the building as being a “contributing structure of the downtown historic district.”
30.	Fountain of Youth Monument 1 <sup>st</sup> Street S, at s.e. corner of 4 <sup>th</sup> Ave. S., south entrance to Progress Energy Park grounds.	Water fountain (functioning, as of 2-2-10), set in modest concrete plaza w. low walls surrounding.	No inscription except for “Fountain of Youth.” Dates from around 1905; originally constructed by Edwin H. Tomlinson; altered numerous times since original construction. An early tourist attraction.
31.	Green-Richman Arcade	Has a “contributing structure” plaque.	Bronze plaque notes the building as being a “contributing structure of the downtown historic district.”
32.	Harlan Hotel (now the offices of Alex Clam, Architectural metal and Design) 15 Eighth St. N.	Two plaques to the right on main entrance.	Bronze plaque notes the building as being a “contributing structure of the downtown historic district.” A second plaque, mounted above, says ‘Harlan Hotel – 1925’.
33.	Hotel Cordova (now the Pier Hotel) 253 Second Ave. N.	The owners bought the bronze plaque that notes the building as being a “contributing structure of the downtown historic district.”	As of 7-24-10, the plaque was not yet mounted. Front desk employee said it would be mounted soon.
34.	Huntington Apartments 350.2 <sup>nd</sup> Street N.	Plaques commemorating the old Huntington Hotel. On pillars at entrance to the current	Plaque on left pillar has picture of the old Huntington, with the words: “The Huntington – St. Petersburg – A resort hotel of merit.” To the left of the picture, in bronze, is the

	Location	Marker, Plaque, or Monument	Remarks
		Huntington Apts.	number "350," the street address. Plaque on right pillar has same picture of the old Huntington, and, in bronze, the words: "Located on this site, 1890's – 1996 – many of St. Petersburg's biggest social events in the 1920's were held there. Prime location – elegant dining room – luxuriant gardens – built by Charles S. Hunt."
35.	Jungle Prada Narvaez Park, Park St. at Elbow Lane.	Has 3 historic markers: one newer marker at the entrance to the park, two older markers slightly south on Park St.	Old rusted metal sign slightly south of park entrance says: "Here landed Panfilo de Narvaez, April 15, 1528. From the site of this ancient Indian village was launched the first exploration by white man of the North American continent." Smaller sign in close proximity says "Cabez de Vaca – 1528 – St. Petersburg Historical Society – from Theodore Anderson family." Newer sign (1993?) has exact same wording as on old rusted metal sign.
36.	La Veranda Bed and Breakfast 111 fifth Ave. N.	Has a "contributing structure" plaque.	Bronze plaque notes the building as being a "contributing structure of the downtown historic district."
37.	Lyceum, The 737 Third Ave. N.	Has a "contributing structure" plaque.	Bronze plaque notes the building as being a "contributing structure of the downtown historic district."
38.	Mirror Lake Drive N. – house # 250.	Has a "contributing structure" plaque.	Bronze plaque notes the building as being a "contributing structure of the downtown historic district."
39.	North Shore Park; north side of softball field. North Shore Drive NE & 9 <sup>th</sup> Ave. NE.	Plaque & bench to the Kids & Kubs softball organization.	Plaque at water fountain says "Kids X Kubs Memorial Fountain ..." Lists names of 12 men; also says "Founded by Evelyn Rittenhouse, 1931 – Dedicated Nov. 8, 1975." Simple stone bench nearby marked only with date, "1930" – probably constructed later.
40.	North Shore Pool 901 North Shore Dr. NE	Bronze historic marker honors Nicole Haislett.	Marker says: "North Shore pool – Training home of Olympic champion Nicole Haislett. In 1979, Nicole Haislett began her competitive swimming career at North Shore with St. Petersburg Aquatics. Thirteen years later she became St., Petersburg's first three-time Olympic gold medal winner. Nicole captured gold medals in the 200 meter freestyle, the 4 x 100 meter freestyle relay, and the 4 x 100 medley relay at the games of the 25 <sup>th</sup> Olympiad in Barcelona, Spain, in 1992. Nicole Haislett is an inspiration to all, reminding us that perseverance and determination are as good as gold. Dedicated July 13, 1993."
41.	North Straub Park, betw. Beach Drive NE & Bayshore Dr. NE.	Bronze plaque honoring William L. Straub'.	Plaque says 'Straub Park - Dedicated in honor of William L. Straub'. Plaque is mounted on short stone wall. Dated March 7, 1939.
42.	Open Air Post Office 76 4 <sup>th</sup> Street N	Plaque on U.S. Post Office building.  Historic marker in front of bldg.	Plaque says: "The nation's first open air Post Office. Cornerstone laid on October 12, 1916. Completed and dedicated on October 27, 1917. Placed on the National Register of Historic Places, April 4, 1976."  New (2010) historic marker says: "Downtown St. Petersburg's Open Air Post Office is one of the city's great civic buildings, having continuously served residents and visitors since ... 1916. The Mediterranean Revival style building ... contains many intricate exterior details ... Postmaster Roy Hanna, with the assistance of architect George W. Stewart, was responsible for the building's design, which was inspired by a 15 <sup>th</sup> century

	Location	Marker, Plaque, or Monument	Remarks
			hospital in Florence, Italy.... The building's open style was extensively promoted in the 1920's as proof of St. Petersburg's balmy climate. In 1969 portions of the building were enclosed ...” --- St. Petersburg Preservation & City of St. Petersburg.
43.	Pennsylvania Hotel (now the Courtyard by Marriott St. Petersburg Downtown), 4th St. N., on the 3 <sup>rd</sup> Ave. side of the building.	Has a “contributing structure” plaque.	Plaque has map of old historic downtown, and says: “This building is a contributing structure of the downtown St. Petersburg Historic District. Listed April 30, 2004, in the National Register of Historic Places. U.S. Department of the Interior. Project sponsor: St. Petersburg Preservation, Inc.”
44.	Pinellas Point neighborhood, on Mound Place, at Princess Hirrihigua Temple Mound Park.	Historic marker commemorates Princess Hirrihigua.	Plaque says: “The History of Princess Hirrihigua – In 1528, Juan Ortiz, a member of the expedition sent from Cuba to find Panfilo de Narvaez, was captured by Timucan Indians. Chief Hirrihigua, their ruler, hated the white man because of the violence of Narvaez Juan Ortiz was condemned to death but Princess Hirrihigua, eldest daughter of the chief, pleaded with him to save Ortiz' life. Princess Hirrihigua saved Ortiz from death 3 times, and when his life was again endangered, she helped him escape to the sub-Timucan tribe of chief Micoso, her betrothed. Chief Hirrihigua was so angered by the escape of Ortiz that he refused to allow princess Hirrihigua to marry chief Micoso. In 1539, Hernando DeSoto rescued Ortiz, who became his guide and interpreter. – erected by the Princess Hirrihigua Chapter of the D.A.R. to commemorate their 50 <sup>th</sup> anniversary, 1910-1960” Second small plaque at base says “In appreciation to Mr. Ed C. Wright, for donating this historic site to the city .... Dec. 1958”
45.	Pioneer Park, center of the park, west of Bayshore Drive.	The Pioneer Monument. Bronze plaque marks Pioneer Park.	“Dedicated to the memory of the pioneers and their families whose vision and leadership helped create St. Petersburg.” 4 other plaques list the names of city ‘pioneers’.
46.	Poynter Institute 801 3 <sup>rd</sup> Street S.	Series of inscribed stones in courtyard, with quotations from journalists. Plus bronze life-size sculpture of Nelson Poynter, seated at a bench.	Quotations from Ida B. Wells, Red Smith, Eugene Patterson, Marguerite Higgins, Alfred Eisenstaedt, Wole Soyinka, Nelson Poynter, Edward R. Murrow & Don Murray.
47.	Poynter Park 3rd Street S.	Plaque in memory of Nelson Poynter, 1903-1978, Chairman, Times Publishing Co.	Inscription expresses his hopes for what St. Petersburg & Pinellas County might become. “St. Petersburg and Pinellas county, the Suncoast, can be the safest, most gracious, and beautiful area in the country, the finest place in the world to live. The St. Petersburg Times has had this goal during its long history, but people, not newspapers, convert ideas into reality.”
48.	Princess Martha Hotel (formerly the Mason Hotel?) 411 1 <sup>st</sup> Avenue N.	Has a “contributing structure” plaque.	Plaque says “This building is a contributing structure of the downtown St. Petersburg Historic District. Listed April 30, 2004, in the National Register of Historic places, U.S. Dept. of Interior. Project Sponsor: St. Petersburg Preservation, Inc.”
49.	Roser Park neighborhood, along Booker Creek.	Various markers (once as many as 25) describing the homes and character of the area.	Free-standing steel markers along both sides of Booker Creek and on neighboring streets. The markers are numbered on the poles that support the signs. #25 is the highest. About 16 appear to survive. Most markers have pictures reproduced from

	Location	Marker, Plaque, or Monument	Remarks
			postcards & newspaper photos of the neighborhood and its homes. Many markers say "Photo and postcard courtesy of Ron Motyka." Age of the markers in unknown; my guess: late '80's?
50.	Salvador Dali Museum 3rd Street S.	On wall outside front entrance of museum.	Lists some 30 names of founders and original supporters...
51.	Snell Island Boulevard, on median strip, south of Vinoy Golf Club.	Bronze plaque commemorates C. Perry Snell, developed of Snell island and Old Northeast.	Plaque says: "Memorial to C. Perry Snell, 1869 – 1942 Mr. Snell, from 1905 to 1942, shaped the destinies (sic) of St. Petersburg more than any other man. He developed most of the area east of 4 <sup>th</sup> Street .... Ending with his masterpiece, Snell Isle. .... The dominant force in his life and work was the creation of beauty; and because of his energy .... He invariably accomplished that goal. His generosity and public spirit have perpetual visual evidence ... This monument to his memory was given ... by Mrs. C. Perry Snell and placed .... in the surroundings beloved by Mr. Snell."
52.	South Straub Park Betw. Beach Dr. & Bayshore Dr. NE	Bronze plaque marks the Bicentennial Water sculpture	Plaque is on the Bicentennial Water sculpture (a fountain). Artist: Geoffrey Naylor, 1976. says 'Dedicated during our bicentennial year for the enjoyment of the people of St. Petersburg....'
53.	St. Bartholomew's Episcopal Church 3747 34 <sup>th</sup> St. S.	Free-standing historic marker, 'Erected by the Florida Board of Parks and Historic Memorials in cooperation with St. Bartholomew Memorial Committee'. F-104 -- 1963	Plaque says: "St. Bartholomew's church. Oldest church in Pinellas County, was organized April 20, 1887. It was constructed in the summer of 1887 by a handful of pioneers equipped with crude tools, built of unturpented wood. The church records indicate that the building cost \$673. Dr. John B. Abercrombie donated an acre of land for the church, April 28, 1887. The original church building has since been enlarged, and is still used for regular services."  Note: this plaque refers to the <b>original</b> St. Bartholomew's church, located at 22 <sup>nd</sup> Ave. S. & 19 <sup>th</sup> St. The congregation moved to its current location in 1967. The original 22 <sup>nd</sup> Ave. S. location is now the home of the New Hope Missionary Baptist Church, which is in a newer larger building than the one described on the historic marker. Also of note at the old 22 <sup>nd</sup> Ave. location is St. Bartholomew's cemetery.
54.	St. Peter's Episcopal Cathedral 140 4 <sup>th</sup> St. N. (Marker is on 2 <sup>nd</sup> Ave. side of the building.)	Free-standing historic marker, erected 2010.	Marker says: "St. Peter's Episcopal Cathedral – St. Peter's cathedral is one of several churches located around Williams Park that led to St. Petersburg becoming known as the 'city of churches'. Other historic church buildings close to the park include The First Baptist Church ... the First Congregational church ... and the first United Methodist Church ... St. Peter's was constructed in the gothic revival style in 1899, and is one of the oldest remaining structures in the city. In 1925, the church was doubled in size to the west ... The church's signature stained glass window of Christ and St. Peter, ... was erected in 1914 ... The church was largely donated by philanthropist Edwin H. Tomlinson, in honor of his father ..."
55.	St. Petersburg High School (now the Mirror Lake Condominiums) 701 Mirror Lake Drive	Has a "contributing structure" plaque.	Plaque says "This building is a contributing structure of the downtown St. Petersburg Historic District. Listed April 30, 2004, in the National Register of Historic places, U.S. Dept. of Interior. Project Sponsor: St. Petersburg Preservation, Inc."

	Location	Marker, Plaque, or Monument	Remarks
56.	St. Petersburg Museum of History 2 <sup>nd</sup> Avenue NE	Outdoor historic exhibits on the grounds of the museum, with signs: old school bell, horse watering trough, newsboy and green bench, Tampa Bay Rays	<p>1. Old school bell: sign says: “This school bell may be the one at the new seven-room ‘graded’ school built in 1894 at the southeast corner of 5<sup>th</sup> St. and second Ave. N, where city hall is today.”</p> <p>2. Watering trough: sign says “This horse watering trough was at Central Avenue and Fourth Street at the turn of the century.”</p> <p>3. Sculpture of newsboy, hawking <i>The Independent</i>, which was given away free if the sun didn’t shine. Newspapers are stacked on an old green bench marked “St. Petersburg – the Sunshine City.” Plaque on ground in front to newsboy and bench explains: “On Sept. 1, 1910, <i>The Evening Independent</i>, St. Petersburg’s first daily newspaper, initiated its famous ‘sunshine offer’ . . . Lew B. Brown, owner, vowed to give the paper away “absolutely free, without condition . . . every day the sun does not shine on St. Petersburg.”</p> <p>4. Stone commemorating the Tampa Bay Rays, 2008 AL champions.</p>
57.	Tomlinson Adult Learning Center 296 Mirror Lake Dr. N.	Has a “contributing structure” plaque.	Plaque says “This building is a contributing structure of the downtown St. Petersburg Historic District. Listed April 30, 2004, in the National Register of Historic places, U.S. Dept. of Interior. Project Sponsor: St. Petersburg Preservation, Inc.”
58.	Unitarian Universalist Church 719 Arlington Ave. N.	Has a “contributing structure” plaque.	Plaque says “This building is a contributing structure of the downtown St. Petersburg Historic District. Listed April 30, 2004, in the National Register of Historic places, U.S. Dept. of Interior. Project Sponsor: St. Petersburg Preservation, Inc.”
59.	Vinoy Hotel (The Renaissance Vinoy Resort and golf Club). 501 5 <sup>th</sup> Ave. NE.	Three bronze plaques, one to each side of main entrance at base of stairs, & one to left of front doors.	<p>Plaque on east side of stairs says: “This property has been placed on the National Register of Historic Places by the United States Department of the Interior.”</p> <p>Plaque of west side of stairs says: “Historic Hotels of America. National Trust for Historic Preservation.”</p> <p>Basic National Register plaque to left of front doors: Plaque has map of old historic downtown, and says: “This building is a contributing structure of the downtown St. Petersburg Historic District. Listed April 30, 2004, in the National Register of Historic Places. U.S. Department of the Interior. Project sponsor: St. Petersburg Preservation, Inc.”</p>
60.	Williams Park, 4 <sup>th</sup> St. side.	Monument to veterans of W.W. II, with additional plaques for veterans of later wars.	Stone pedestal and bronze plaque for veterans of W.W. II, with additional plaques listing casualties from World War II, the Korean conflict, and the Vietnam War.
61.	Williams Park, n.e. cor.	Statue and Memorial to Thaddeus Kosciuszko.	Life-size bronze statue of Kosciuszko on stone pedestal, with 4 large inscribed bronze plaques giving detailed information about his life and contributions.
62.	Williams Park, SE corner.	Stone monument to merchant seamen.	Memorial says: ‘Dedicated to the memory of merchant seamen of this community who in World War II gave their lives in the service of their country’ (list of names)
63.	Williams Park, southeastern part.	Williams Park Veterans Memorial.	<p>Memorial consists of 2 pillars and large granite block w. a number of plaques. Main plaque says: “The Unites States Veterans Memorial - dedicated to all veterans, past, present and future - Memorial Day 1995. May you who pass this way renew and cherish the heritage of America’s veterans . . . .”</p> <p>Second plaque says: “City of St. Petersburg – the United States Veterans Memorial . . .</p>

	Location	Marker, Plaque, or Monument	Remarks
			was made possible through the following major contributions:" (lists individuals and corporations). Smaller plaques, without names of individuals, for the various wars, and for the various branches of military service.
64.	Williams Park, southwestern corner.	Monument to veterans who died in World War I.	Concrete monument, originally erected to commemorate the dead from World War I, with inscription 'Our heroes of the World war 1917-1918.' Has a bronze plaque listing local veterans who died in the first world War.
65.	Women's Town Improvement Association building (now offices of the Church of Scientology) 336 1 <sup>st</sup> Ave. N.	New (2010) free-standing historic marker, and older plaque on front wall.	New historic marker says: "Women's Town Improvement Association (WTIA) building -- ... building designed by Milton E. Benjamin, and constructed at a cost of \$20,000, is neo-classical in style. The WTIA ... was founded in 1901, serving St. Petersburg for more than 4 decades. Dedicated to the town's beautification and the uplifting of local culture, many of the city's most influential women were WTIA members, including writer Katherine Bell Tippets .... In the early 1900's, the WTIA was a staunch ally of ... William Straub's successful effort to establish the city's waterfront parks system. In 1931, an art-deco style cast stone front was installed when the building was converted to commercial use...." Older plaque has a map of downtown St. Pete, and says: "This building is a contributing structure of the downtown historic district. Listed April 30, 2004, in the national Register of historic places, U.S. Department of the interior. Project sponsor, St. Petersburg Preservation, inc."



# RESOURCE and RESEARCH GUIDE

Urban Planning and Historic Preservation Division  
Planning and Development Services Department  
City of St. Petersburg  
Municipal Services Center  
One Fourth Street North, 8<sup>th</sup> Floor  
St. Petersburg, Florida 33701

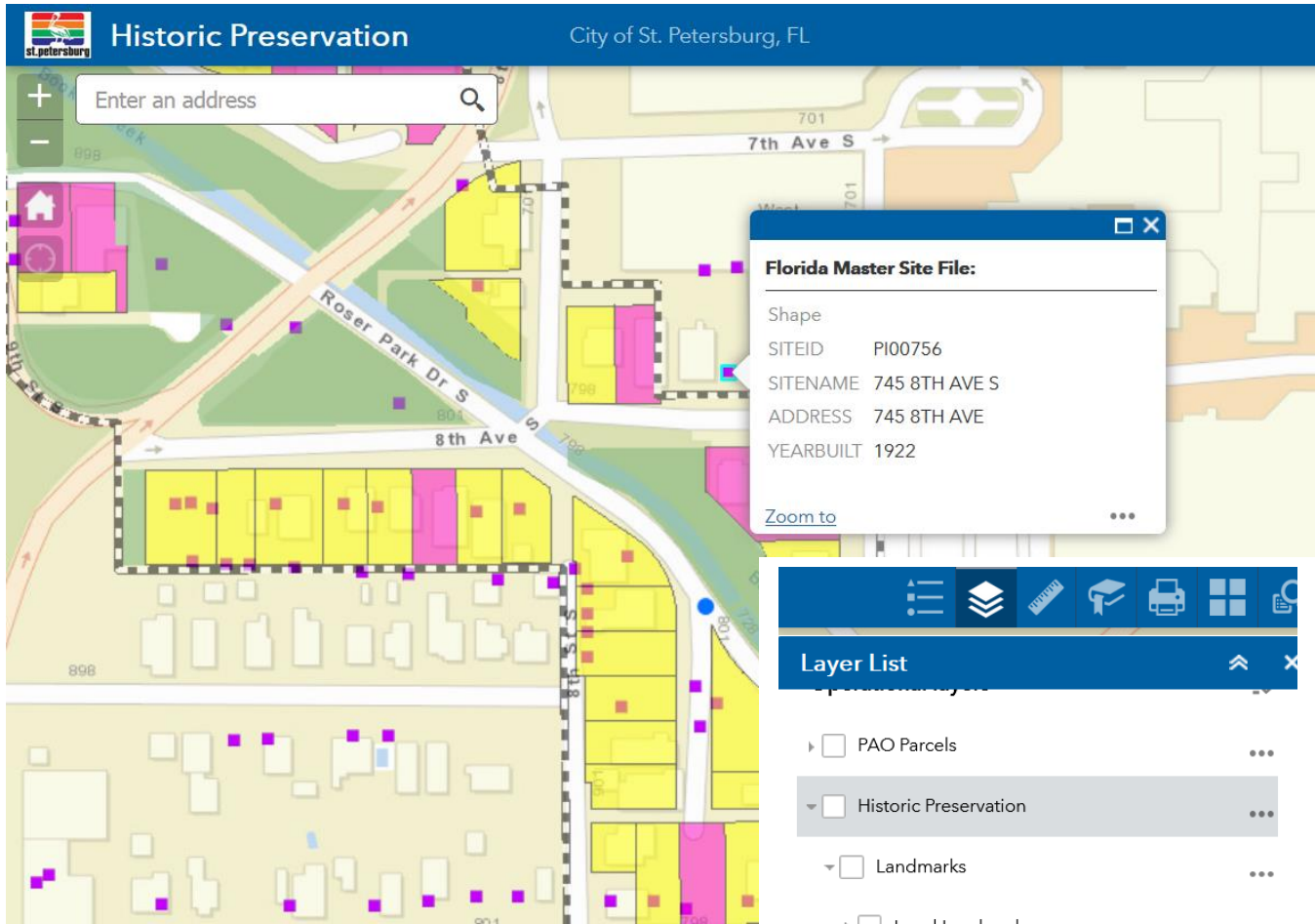
## City of St. Petersburg

# RESOURCE AND RESEARCH GUIDE


## TABLE OF CONTENTS

Historic Preservation Map Module .....	3
National Register of Historic Places .....	4
St. Petersburg Register of Historic Places .....	4
List of Potentially Eligible Properties .....	5
Design Guidelines for Historic Properties .....	5
Signs of Historic Significance .....	6
Legacy Businesses .....	6
Markers and Monuments .....	7
How to Research Your Home .....	8
Publications and Research Papers .....	9
Photo Collections .....	11
Video Collections .....	13
Heritage Trails and Virtual Tours .....	14
Biographies .....	15
Archaeological Collections .....	15
Surveys .....	16
Miscellaneous Resource Links .....	17

# HISTORIC PRESERVATION MAP MODULE



In order to identify the status of your property, please visit the City of St. Petersburg's Historic Preservation map module, an interactive mapping feature:

1. [Link to the Historic Preservation Map](#)
2. Click on the following icon to reveal information layers: 
3. Click on the small arrow to the left of each check box reveal additional sub-layers of information
4. Click on the checkbox to activate a layer for viewing on the interactive map
5. Enter your street address into the search box at the upper left corner or zoom tools

## NATIONAL REGISTER OF HISTORIC PLACES

The National Register of Historic Places, the “official list of the Nation’s historic places worthy of preservation,” is administered by the National Park Service. To be eligible for listing in the National Register, a property must meet the National Register Criteria for Evaluation. During this evaluation, the resource’s age and historic integrity are examined, and the property must be shown to hold association with events, activities, or trend’s that were important to the past. The listing of a property in the National Register does not place restrictions on a private owner’s future alterations, unless Federal assistance is involved in the project.

[List of St. Petersburg Resources in the National Register of Historic Places](#)



CITY OF ST. PETERSBURG, FLORIDA

### NATIONAL REGISTER OF HISTORIC PLACES

Urban Planning and Historic Preservation Division  
Planning and Development Services Department  
City of St. Petersburg  
Municipal Services Center  
One Fourth Street North, 8<sup>th</sup> Floor  
St. Petersburg, Florida 33701

## ST. PETERSBURG REGISTER OF HISTORIC PLACES

The St. Petersburg Register of Historic Places is a local program created by the Land Development Regulations of City Code and administered by City staff. Eligibility for the St. Petersburg Register, often referred to as “local landmark designation,” is established through a set of criteria that are closely modeled after the National Register Criteria for Evaluation.

Unlike listing in the National Register, a resource’s designation as a local landmark in the St. Petersburg Register of Historic Places provides properties with a degree of protection from unnecessary demolition or unsympathetic alterations by private owners. Historic preservation staff conducts reviews of proposed changes to locally designated properties through the issuance of Certificates of Appropriateness.

[List of Resources in the St. Petersburg Register of Historic Places](#)



CITY OF ST. PETERSBURG, FLORIDA

### ST. PETERSBURG REGISTER OF HISTORIC PLACES

Urban Planning and Historic Preservation Division  
Planning and Development Services Department  
City of St. Petersburg  
Municipal Services Center  
One Fourth Street North, 8<sup>th</sup> Floor  
St. Petersburg, Florida 33701

# ST. PETERSBURG'S LIST OF POTENTIALLY ELIGIBLE PROPERTIES

The identification and listing of historic properties potentially eligible for local landmark designation is authorized by City Code. The intent is to protect properties identified as individually eligible from the threat of demolition by establishing a 30-day stay-of-demolition and public notice.

[List of Potentially Eligible Properties](#)



CITY OF ST. PETERSBURG, FLORIDA

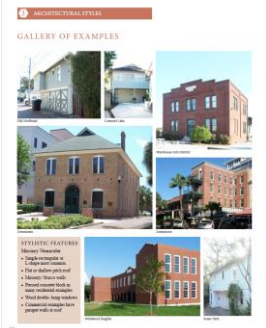
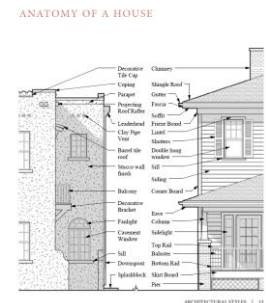
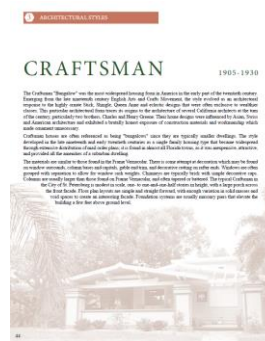
## LIST OF POTENTIALLY ELIGIBLE PROPERTIES

Urban Planning and Historic Preservation Division  
 Planning and Development Services Department  
 City of St. Petersburg  
 Municipal Services Center  
 One Fourth Street North, 5th Floor  
 St. Petersburg, Florida 33701

# ST. PETERSBURG'S DESIGN GUIDELINES FOR HISTORIC PROPERTIES

Titled *St. Petersburg's Design Guidelines for Historic Properties* ("Design Guidelines"), this important resource includes an introduction, architectural styles section, information relating to maintenance and repair, additions and alterations, and new construction, a description of community characteristics, and an appendix including specific information relating to each of the City's local historic districts.

[Design Guidelines for Historic Properties](#)



## ST. PETERSBURG'S SIGNS of HISTORIC SIGNIFICANCE

Some signs have become significant and iconic elements of the built environment in their own regard. Since policies regulating the size and placement of business signs have changed over the years, some of St. Pete's most unique and recognizable signs have become nonconforming. To allow and encourage the continued use, maintenance, and preservation of these signs, the City has adopted regulations pertaining to Signs of Historic Significance.

[Signs of Historic Significance](#)



## ST. PETERSBURG'S LEGACY BUSINESSES

The identification and recognition of legacy businesses is an approach to preservation that celebrates the significance and contributions of longstanding local businesses, not just the spaces they inhabit. These legacy businesses have helped shape the character of the neighborhood they're located in and continue to serve today. A legacy business is defined as one that has been in existence for at least 50 years. Since these legacy businesses tend to have smaller margins and lack outside investors or shareholders, their continued success depends on community support. For more information or to submit an unlisted legacy business, please contact [history@stpete.org](mailto:history@stpete.org).



CITY OF ST. PETERSBURG, FLORIDA

### ST. PETERSBURG LEGACY BUSINESSES

Urban Planning and Historic Preservation Division  
Planning and Development Services Department  
City of St. Petersburg  
Municipal Services Center  
One Fourth Street North, 6<sup>th</sup> Floor  
St. Petersburg, Florida 33701

## ST. PETERSBURG'S MARKERS and MONUMENTS

Markers and monuments are important commemorations of an important event, person, or group who has made a significant contribution to the history and culture of St. Pete, the region, state, or nation. Markers and monuments also commemorate buildings or sites in the area of architecture and archaeology. The City's policy regulating markers and monuments are administered through the Urban Planning and Historic Preservation Division in partnership with the Cultural Affairs Director.

[List of Markers and Monuments](#)



CITY OF ST. PETERSBURG, FLORIDA

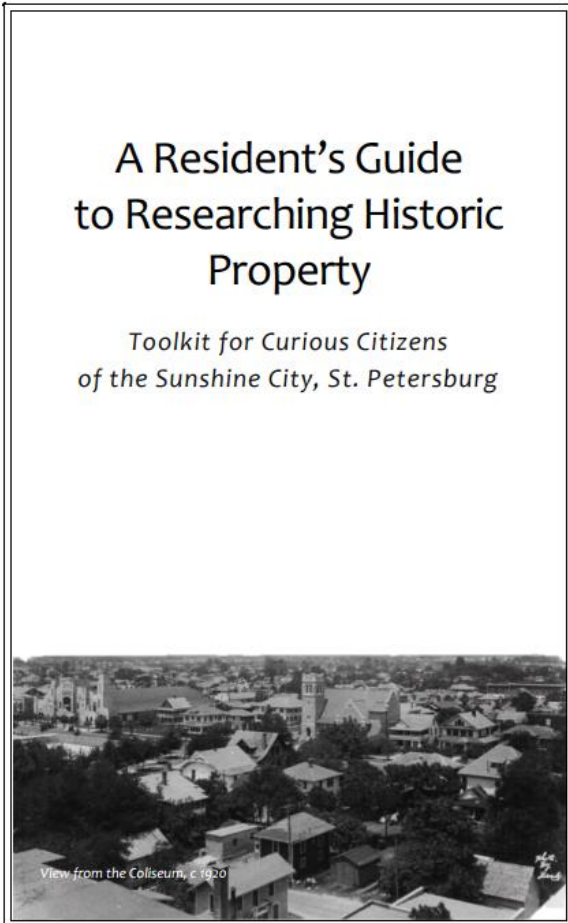
## ST. PETERSBURG MARKERS and MONUMENTS

Urban Planning and Historic Preservation Division  
Planning and Development Services Department  
City of St. Petersburg  
Municipal Services Center  
One Fourth Street North, 8<sup>th</sup> Floor  
St. Petersburg, Florida 33701

# HOW TO RESEARCH YOUR HOME

This guide is designed to help you better understand the origins and history of your home or place of business. Whether it is located within one of our districts listed in the National Register of Historic Places or St. Petersburg Register of Historic Places, is an individual landmark, or is simply a space that you love, uncovering the details of a building's evolution between then and now can be a rewarding exercise and might even reveal some remarkable connections to the city's social and developmental past.

## [A Resident's Guide to Researching Historic Property](#)



visitors and winter residents, which can be helpful in narrowing a construction date range.

»»» **Historical photographs** are another way to determine that a building had been constructed by a certain date or earlier, and can also give you clues about dates of alterations or additions. Some good sources for such photos are listed in the Local & State Photo Archives section.

»»» **The Pinellas County Property Appraiser's Office Website** hosts a fully searchable database that includes each parcel's legal description, the original plat book and page describing the land's subdivision, recent sales, and construction date. This date can be somewhat unreliable for buildings dating to 1925 or earlier, so be sure to cross reference!



The Blocker House at 145 Fourth Ave. NE, Constructed in 1905 and photographed shortly thereafter

### Learning about Previous Occupants

Getting to know the stories of the individuals who have dwelt in, worked in, and shaped the city's buildings creates connections between the past and present that are often delightfully unexpected. Take your research beyond previous occupants' names and dates to document occupations, travels, and interests; you might find you have something in common!

»»» Talking to **neighbors and former residents** might yield a surprising amount of information. Names and dates of ownership, anecdotes about previous occupants, and even historic photos have been revealed through something as casual as a friendly conversation.

»»» **Polk's City Directories** were published annually beginning in 1912 and can be used to confirm the existence and residents of historic properties. It



Entry for the Blocker House in 1920 Polk's City Directory. City Directories can identify neighboring families, boarders, and occupants' professions as well as owners' names.

## PUBLICATIONS and RESEARCH PAPERS

- Arsenault, Ray. **St. Petersburg and the Florida Dream**. Gainesville, FL: University Press of Florida, 1996.
- Babb, Ellen and Schnur, James Anthony. (1995) **St. Petersburg Goes to War, 1941 - 1945**. (PowerPoint Presentation). Retrieved from University of South Florida St. Petersburg Digital Archive. St. Petersburg, FL.
- Baker, Rick. **Mangroves to Major League: A Timeline of St. Petersburg, Florida**. St. Petersburg, FL: Southern Heritage Press, 2000.
- Bethell, John A. **Pinellas: A Brief History of the Lower Point**. St. Petersburg, FL: Press of the Independent Job Dept., 1914.
- Board of Trade, St. Petersburg. **St. Petersburg by the Gulf-Stream: In the Land of Health, Opportunity and Fulfillment**. 1911
- Boston, Archie. **Lil' Colored Rascals in the Sunshine City**. Archie Boston Graphic Design, 2009.
- Bothwell, John Richard. **Sunrise 200: A Lively Look at St. Petersburg's Past**. St. Petersburg, FL: Times Publishing Co., 1975.
- Buckley, James. **Street Railways of St. Petersburg Florida**. Forty Fort, PA: Harold Cox 1983.
- Davis, Enoch Douglas. **On the Bethel Trail**. St. Petersburg, FL Valkyrie Press, 1979.
- Dunn, Hampton. **Yesterday's St. Petersburg**. Miami, FL: E. A. Seeman Pub., 1973.
- Fleming, Douglas. **Toward Integration: The Course of Race Relations in St. Petersburg 1868 to 1963**. (Master's thesis) – History Department, University of South Florida, 1973.
- Fuller, Walter Pliny. **St. Petersburg and Its People**. St. Petersburg, FL: Great Outdoors Publishing Company, 1972.
- Gould, Rita Slaght. **Pioneer St. Petersburg: Life In and Around 1888 "Out Near the Back of Beyond."** St. Petersburg, FL: Page Creations, 1987.
- Grismer, Karl. **The History of St. Petersburg: Historical and Biographical**. St. Petersburg, FL: Tourist News Publishing Company, 1924.
- Grismer, Karl. **The Story of St. Petersburg: the History of Lower Pinellas Peninsula and the Sunshine City**. St. Petersburg, FL: P. K. Smith, 1948.
- Hartzell, Scott Taylor. **Voices of America: St. Petersburg: An Oral History**. Charleston, SC: Arcadia / Tempus Publishing, 2002.
- Henig, Adam. **Baseball Under Seige: The Yankees, the Cardinals, and a Doctor's Battle to Integrate Spring Training**. Independent, 2017.
- Homan, Lynn M. and Reilly, Thomas. **St. Petersburg's Mercy Hospital: A History of Caring**. 2005.
- Irby, Lee. **The Battle Over Mobile Homes in St. Petersburg, Florida**. The Florida Historical Quarterly Fall 2000, Volume 79, Number 2, Page 181.

- Jackson, Page S. **History of St. Petersburg and Pinellas County, Florida**. 1962
- Jones, Payton. **Struggle in the Sunshine City:” The Movement for Racial Equality in St. Petersburg, Florida 1955-1968**. (Master’s Thesis) Department of Florida Studies, University of South Florida, 2010.
- Kline, Wm. S. **Illustrated and Descriptive St. Petersburg, Florida**. Spartansburg, SC: Band and White, 1908
- Marth, Dell. **St. Petersburg: Once Upon a Time, Memories of Places & People 1890s to 1990s**. Branford, FL: Suwanee Rover Press, 1996.
- Michaels, Will. **The Making of St. Petersburg**. Charleston, SC: The History Press, 2012.
- Michaels, Will. **Hidden History of St. Petersburg**. Charleston, SC: The History Press, 2016.
- New York Public Library Digital Collections. **The Green Book**. 1936 – 1967. [[LINK](#)]
- Pinellas County Public Schools. **The Golden Anniversary of Pinellas Schools**. 1962.
- Phillip, Evelyn. (1994) **An Ethnohistorical Analysis of the Political Economy of Ethnicity Among African Americans in St. Petersburg, Florida**. (Master’s theses). University of South Florida. St. Petersburg, FL.
- Schnur, James Anthony, "**An Overcast Forecast in the 'Sunshine City': Segregation and Inequality in St. Petersburg, Florida, before 1960**" (1996). USF St. Petersburg campus Faculty Publications. 2982. [https://digitalcommons.usf.edu/fac\\_publications/2982](https://digitalcommons.usf.edu/fac_publications/2982)
- Schnur, James Anthony and Landon, Patricia M., "**Historical Reflections along Mirror Lake**" (2012). USF St. Petersburg campus Faculty Publications. 3028. [https://digitalcommons.usf.edu/fac\\_publications/3028](https://digitalcommons.usf.edu/fac_publications/3028)
- Schnur, James Anthony, "**Independence, New Challenges, and New Opportunities [1912-1921]**" (2015). USF St. Petersburg campus Faculty Publications. 3032. [https://digitalcommons.usf.edu/fac\\_publications/3032](https://digitalcommons.usf.edu/fac_publications/3032)
- Schnur, James Anthony, "**Leading the Way along Tampa Bay : Over Seventy-Five Years of Service at the St. Petersburg Woman's Club**" (2011). USF St. Petersburg campus Faculty Publications. 3037. [https://digitalcommons.usf.edu/fac\\_publications/3037](https://digitalcommons.usf.edu/fac_publications/3037)
- Schnur, James Anthony, "**Recovering and Discovering Our Past: The African-American Experience in St. Petersburg**" (1996). USF St. Petersburg campus Faculty Publications. 3057. [https://digitalcommons.usf.edu/fac\\_publications/3057](https://digitalcommons.usf.edu/fac_publications/3057)
- Schnur, James Anthony and Babb, Ellen, "**St. Petersburg goes to War, 1941-1945**" (2006). USF St. Petersburg campus Faculty Publications. 3067. [https://digitalcommons.usf.edu/fac\\_publications/3067L](https://digitalcommons.usf.edu/fac_publications/3067L).
- Schnur, James Anthony, "**The Land Boom and Distant Clouds on the Horizon [1922-1931]**" (2016). USF St. Petersburg campus Faculty Publications. 3079. [https://digitalcommons.usf.edu/fac\\_publications/3079](https://digitalcommons.usf.edu/fac_publications/3079)
- **Seeing St. Petersburg**. (Forward by William L. Straub, Editor, St. Petersburg Times) Date Unknown.

- Sigurdsson, Ragnar (1989). **The Sit-Ins and the Theatre Protests in St. Petersburg 1960-1963.** (College Paper) University of South Florida. St. Petersburg, FL.
- William Harvard, Henry Taylor, Archie Parrish, Et al. **St. Petersburg Architecturally.** Independent, St. Petersburg, FL: 1939.
- Stanton, Robert. **Streetcar to the Jungle: Trolleys in the Streets of St. Petersburg, Florida.** Seminole, FL: Robert Stanton, 2006.
- Stephenson, Bruce. **Visions of Eden: Environmentalism, Urban Planning and City Building in St. Petersburg, Florida, 1900 - 1995.** Ann Arbor, MI: Ohio State
- Simner, Marvin L., **Growing up black in the Jordan Park District: The St. Petersburg African-American experience during the civil rights era of the 1950s/1970s.** (2015). Psychology Publications. 100. <https://ir.lib.uwo.ca/psychologypub/100>
- Sitler, Nevin. (2006). **Selling St. Petersburg: John Lodwick and the Promotion of a Florida Paradise.** (Master's theses). University of South Florida. St. Petersburg, FL.
- Sitler, Nevin and Sitler, Richard. **The Sunshine Skyway Bridge: Spanning Tampa Bay.** Charleston, SC: The History Press, 2013.
- Sitler, Nevin. **Warm Wishes from Sunny St. Pete: The Success Story of Promoting the Sunshine City.** Charleston, SC: The History Press, 2014.
- St. Petersburg Times Staff. **Blacks in St. Petersburg 1980.**
- St. Petersburg Investment Company. **Progress and Possibilities of St. Petersburg.** 1901.
- Warren, Christian (1989). **Booms, Busts and Bungalows: Development Patterns and Home Styles in St. Petersburg, Florida, 1888 - 1926.** (College Paper) University of South Florida. St. Petersburg, FL.
- Wilson, Jon. **The Golden Era in St. Petersburg: Postwar Prosperity in the Sunshine City.** Charleston, SC: The History Press, 2013.
- Wilson, Jon. (2009). **Shaping the Dream: A Survey of Post Work War II St. Petersburg, 1946-1963.** (Master's theses). University of South Florida. St. Petersburg, FL.

## PHOTO COLLECTIONS

- **Burgert Brother Photograph Collection.** Retrieved from the Hillsborough County Public Library's Digital Archive. A Burgert Brother Photographic Collection including more than 600 historic photos. <https://digitalcollections.hcplc.org/digital/collection/p15391coll1/search/searchterm/petersburg/field/all/mode/all/conn/and/display/200/order/nosort/ad/asc>
- **St. Petersburg Museum of History Photograph Collection.** An online photograph collection including more than 350 historic photos. The museum also has an extensive archive library featuring more than 8,000 photographs and a combined 30,000 images and documents; it is the most comprehensive photo collection of historic St. Petersburg. <https://www.flickr.com/photos/spmoh-archives/with/14513495325/>

- **Earl R. Jacobs III Collection of Francis G. Wagner's St. Petersburg Photographs**. Retrieved from University of South Florida St. Petersburg Digital Archive. This collection documents the growth of St Petersburg from the 1920's to the 1960's. Photographer Francis G. Wagner [1891-1975], a native of Tontogany, Ohio, came to St. Petersburg in the winter of 1914. He opened St Petersburg's first camera store, the Strand Camera Shop at 9 Second Street in 1916. The Wagners sold the Strand Camera Shop to employee Charlie E. Jones in 1963 and Jones closed the shop around 1980. The space was rented to various businesses over the years. Hired in April 1984 to clean out the storage loft, Earl R. Jacobs, III found and preserved more than one thousand negatives, which he later donated to USF Libraries Special Collections. <https://digital.lib.usf.edu/wagner/all/usfapi>
- **Hampton Dunn Collection of Florida Postcards**. Retrieved from University of South Florida St. Petersburg Digital Archive. As a longtime leader in the Peninsula Motor Club, an affiliate of the American Automobile Association (AAA), Journalist Hampton Dunn had the opportunity to criss-cross Florida countless times. In his travels and own historic research, he became an avid collector of Florida ephemera. His postcard collection alone consists of more than 16,000 items, mostly from the first half of the twentieth century, featuring images of Florida landmarks. Hampton Dunn Collection of Florida Postcards provides scenic images from early twentieth century Florida, conveying a sense of what earlier times looked like, or may have looked like, displaying color images of street scenes, natural vistas, and Floridians at work and play. This link leads to a curated collection of approximately 200 postcards from within St. Petersburg. <https://digital.lib.usf.edu/results/?t=St.%20Petersburg,dunn-postcards&f=ZZ,ZX&o=0>
- Ayers, Wayne. **Images of America: St. Petersburg, The Sunshine City**. Charleston, SC: Arcadia Publishing, 2001
- Crews, Christine. **Vintage Greetings: Postcards from St. Pete**. Independent, 2016.
- Deese, Wynelle. **St. Petersburg: Now and Then**. Charleston, SC: Arcadia, 1999
- Deese, Wynelle. **St. Petersburg, Florida: Past and Present**. Atglen, PA: Schiffer Publishing LTD., 2008
- Deese, Wynelle. **St. Petersburg, Florida: A Visual History**. Charleston, SC: History Press, 2006
- Edel, Andrew. **Historic Photos of St. Petersburg**. Nashville, TN: Turner Publishing Co., 2008.
- Edel, Andrew. **Remembering St. Petersburg**. Nashville, TN: Trade Paper Press, 2010.
- Gonzalez, Robin Robson. **Souvenir of St. Petersburg, Florida: Views from the Vinoy**. St. Petersburg, FL: HONNA, 2008
- Hartzell, Scott Taylor. **Remembering St. Petersburg, Florida: Sunshine City Stories**. Charleston, SC: History Press, 2006.
- Hartzell, Scott Taylor. **Remembering St. Petersburg, Florida: More Sunshine City Stories, Volume 2**. Charleston, SC: History Press, 2006.
- Hoffman, Shelley. **Images of America: St. Petersburg's Maritime Services Training Center**. Charleston, SC: Arcadia Publishing, 2006
- Martin, Mary. **Greeting from St. Petersburg**. Atglen, PA: Schiffer Publishing LTD., 2007
- O'Brien, Sara. **St. Petersburg (Then and Now)**. Charleston, SC: Arcadia Publishing, 2009.

- Pavlucik, Thomas. **Trains of Pinellas County**. Independent, 2018.
- Peck, Rosalie and Wilson, Jon. **St. Petersburg's Historic 22nd Street South**. Charleston, SC: History Press, 2006
- Peck, Rosalie and Wilson, Jon. **St. Petersburg's Historic African American Neighborhoods**. Charleston, SC: History Press, 2008
- Rooks, Sandra. **Black America Series: St. Petersburg Florida**. Charleston, SC: Arcadia Publishing, 2003.
- Schnur, James Anthony. **St. Petersburg Through Time. America Through Time Series**. Stroud, U.K.: Fonthill Media LLC, 2014.
- Spencer, Donald. **St. Petersburg in Vintage Postcards**. Ormond Beach, FL: Camelot

## VIDEO COLLECTIONS

- **Sunken Gardens: Paradise Preserved**. Robin Reed & Bill Ryland. Society for Commercial Archeology ("SCA") National Conference, April 2014. <https://youtu.be/2DwO5XS3X94>
- **Florida Roadside Attraction Signs and Entrances**. Ken Breslauer. SCA National Conference, April 2014. <https://youtu.be/UXRASKsjSp8>
- **The Curious Tale of Jack Kerouak's Death in St. Petersburg**. Jonathon Tallon. SCA National Conference, April 2014. <https://youtu.be/XzpC9g6bu14>
- **A History of St. Petersburg's Derby Lanes**. Chris Berger. SCA National Conference, April 2014. [https://youtu.be/P0KK\\_8dYvE0](https://youtu.be/P0KK_8dYvE0)
- **Roadside Remnants of the Sunshine State**. Dick Bjornseth. SCA National Conference, April 2014. <https://youtu.be/bgc-eYvDEVY>
- **Neon Icons: Vintage Roadside Signs Along Florida's Scenic Byways**. Penny Perkins. SCA National Conference, April 2014. [https://youtu.be/t\\_ICVob-R0c](https://youtu.be/t_ICVob-R0c)
- **City of St. Petersburg "Living Local" Series [LINK]:**
  - Alliance for Bayway Communities
  - Broadwater
  - Campbell Park
  - Child's Park
  - Crescent Heights
  - Crescent Lake
  - Disston Heights
  - Driftwood
  - Euclid St. Paul
  - Historic Kenwood
  - Historic Old Northeast
  - Historic Roser Park
  - Historic Uptown
  - Jungle Prada
  - Lake Maggiore Shores
  - Lakewood Estates
  - Old Southeast
  - Palmetto Park
  - Pinellas Point
  - Shore Acres
  - St. Pete Heights
  - Tropical Shores
  - Woodlawn

- **City of St. Petersburg “Est. 1903: A St. Pete History Show” Series** [\[LINK\]](#):
  - Al Capone
  - Baseball Desegregation
  - Benoist Breakdown
  - The Dawn of Spring Training
  - The Fountain of Youth
  - First Black Settler
  - The Indian Mounds
  - Jazz in the City
  - Little St. Mary’s
  - Mirror Lake Water Supply
  - The Vinoy
  - ‘Wardsville’ to ‘St. Petersburg’
  - Webb’s City
  - World’s First Commercial Airline
  
- **City of St. Petersburg “Black History Stories”** [\[LINK\]](#):
  - African American Heritage Trail
  - The Deuces: 22<sup>nd</sup> Street South
  - Education
  - Elder Jordan Sr.
  - The Future
  - Gibbs High School
  - Manhattan Casino
  - Standing on the Shoulders of History

## HERITAGE TRAILS and VIRTUAL TOURS

Residents and visitors can experience St. Pete history on foot by engaging with one of the many self-guided historic tours around the city. Heritage trails are a valuable cultural resource and an important component of historic preservation and heritage tourism. In addition to preserving personal stories, heritage trails bring life and add value to the surrounding physical environment.

- **African American Heritage Trail** [\[LINK\]](#)

The African American Heritage Trail has two self-guided walking tours, each of which contains a concentration of resources that are significant to the history of St. Petersburg’s African American residents. Nineteen markers and a corresponding guide explore the African American community between the arrival of the first African Americans in 1868 and the Civil Rights era ending in 1968. Both trails begin at the Dr. Carter G. Woodson Museum at 2240 9th Ave South. *This tour is a collaboration between the City of St. Petersburg and the African American Heritage Association of St. Petersburg.*

- **Historic Outdoor Museum of Roser Park** [\[LINK\]](#)

The Historic Outdoor Museum of Roser Park is a self-guided walking tour that currently features twenty-eight markers describing the neighborhood's features and history. *This tour is maintained through the Historic Roser Park Neighborhood Association.*

- **Walk St. Pete: Downtown Audio & Photo Tour** [\[LINK\]](#)

The Florida Stories Walking Tour app offers fun stories about characters from the city’s past and guides users to some of downtown’s best in historic architecture. *This tour is a collaboration between the Florida Humanities Council and Preserve the Burg, Inc.*

- **Downtown and Waterfront Walking Tours** [\[LINK\]](#)

There are three routes to choose from on the Downtown and Waterfront Walking Tours. Visitors can guide their own tour or hire a professional docent to host a tour. *This tour is a collaboration between the Florida Department of State—Division of Historic Resources, Preserve the Burg, Inc. and Southern Roots Realty, Inc.*

- **The History Half Hour Virtual Tours** [[LINK](#)]

With this video series, learn about the rich history of St. Petersburg. Hosted by Monica Kile, historian, and presented on behalf of I Love the Burg in partnership with the St. Petersburg Downtown Partnership, this video series aims to inform, educate, and entertain with valuable information that connects our past to the present, both good and bad, and perhaps serve as a guide for the Sunshine City's future.

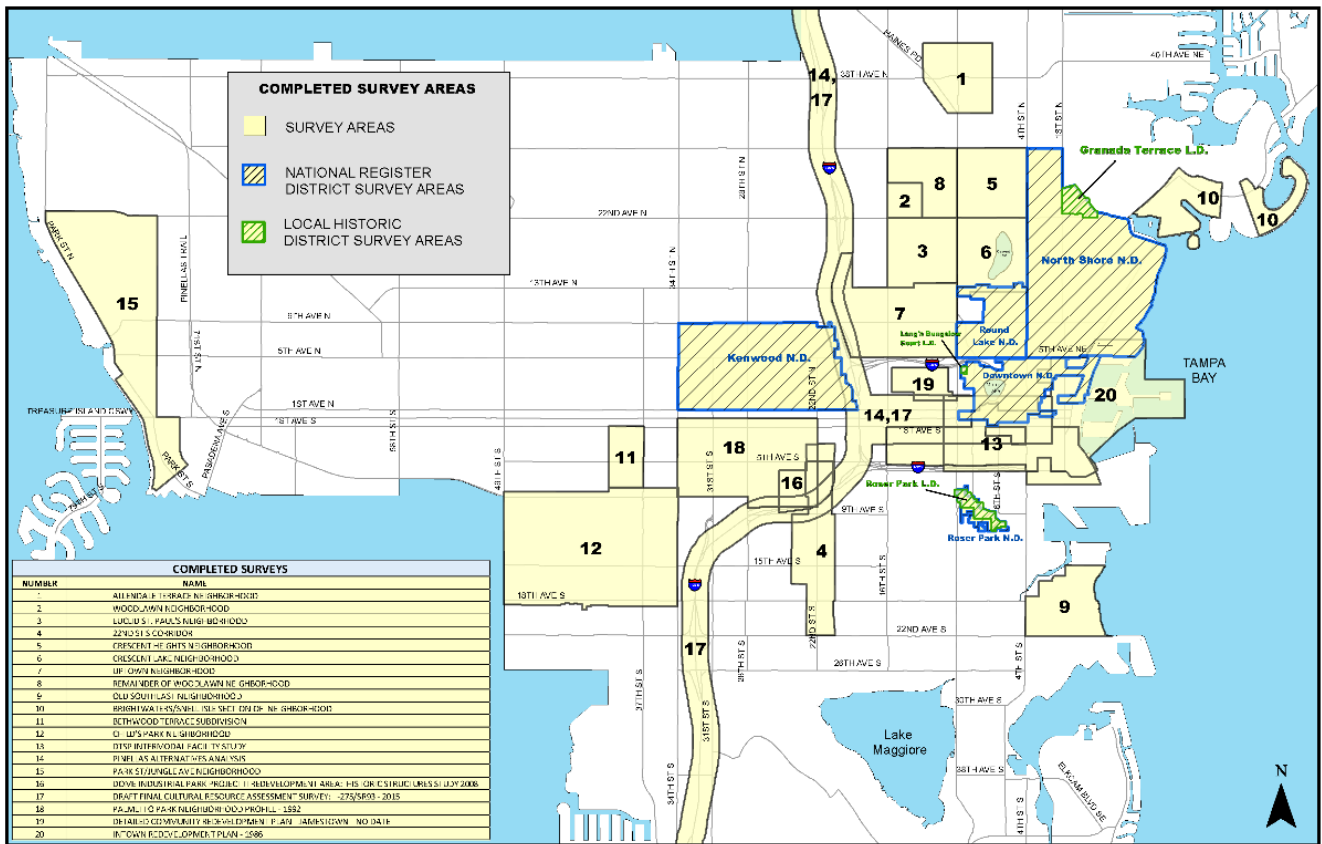
## BIOGRAPHIES

- **St. Petersburg's Notable Architects**. City of St. Petersburg. 2014.
- Allen, Burton. **Cade Allen: A Life Remembered**. St. Petersburg, FL: Self-Published, 2008.
- Roos, Frederick, W. **The Brief, Bright Aviation Career of St. Louis Tom Benoist**. American Institute of Aeronautics and Astronautics, Inc. <https://doi.org/10.2514/6.2005-1464>
- Parry, Albert. **Full Steam Ahead: The True Story of Peter Demens, the Brave Russian Nobleman Who Built the Orange Belt Railway and Founded America's Unique St. Petersburg**. St. Petersburg, FL; Great Outdoors Pub. Co., 1987
- Craig, Diane M. (2012). **George Snow Hill: A WPA Artist and His Contributions to Florida and Tampa Bay**. (Master's theses). University of South Florida. St. Petersburg, FL.
- **Antony Habersack "Tony" Jannus: Pilot of the world's first flight in scheduled aviation (1914, St. Petersburg, FL) and first airline (St.Petersburg-Tampa Airboat Line)**. <http://www.tampapix.com/jannus.htm>
- Johnson, Gary. **Glenn Q. Johnson, Architect, Brief Professional Biography**. Independent, 2017.
- Stephenson, Bruce. **John Nolen, Landscape Architect and City Planner**. University of Massachusetts Press, 2015.
- Goodden, Amy. (1995) **James B. Sanderlin: The Gentle Giant of Civil Rights in Pinellas County, 1962-1990**. (Master's theses). University of South Florida. St. Petersburg, FL.
- Wells, Judy Lowe. **C. Perry Snell: His Place in St. Petersburg, Florida**. Marietta, GA: Orange Blossom Press, 2006.

## ARCHAEOLOGICAL COLLECTIONS

- **Archaeology in St. Petersburg Parks**. Retrieved from University of South Florida St. Petersburg Digital Archive. St. Petersburg, FL. <https://digital.lib.usf.edu/ARCH-STPETE-PARKS#>

# HISTORIC, ARCHITECTURAL, CULTURAL RESOURCE ASSESSMENT SURVEYS



## Surveys on File with the City of St. Petersburg's Urban Planning and Historic Preservation Division

- 22nd Street South – 2000
- Brightwaters Section of Snell Isle - 2000
- Child's Park Neighborhood Profile – 1993
- Crescent Heights, Crescent Lake, Portion of Uptown – 1996
- CRAS Interstate 275 - 2015
- CRRS Downtown SP Intermodal Facility Study - 2009
- CRRS Pinellas Alternatives Analysis
- Dome Industrial Park - 2008
- EDGE District - 2016
- Jungle Avenue, Park Street - 2000
- Kenwood – 1995
- North Shore, Roser Park, Portion of Round Lake – 1994
- Old Southeast - 1993
- Palmetto Park Neighborhood Profile - 1992
- Woodlawn, Allendale, Euclid St. Paul – 1997
- Woodlawn, Part II – 2000

## MISCELLANEOUS RESOURCE LINKS

### Local Resources

[Dr. Carter G. Woodson African American Museum](#)  
[Olive B. McLin Community History Project](#)  
[Pinellas County Heritage Village](#)  
[Pinellas Pioneer Settlement](#)  
[Pinellas Remembers: Community Remembrance Project Coalition](#)  
[St. Petersburg Museum of History](#)  
[Sanborn Fire Insurance Maps](#)  
[State Library and Archives of Florida](#)  
[St. Petersburg College, Digital Archive](#)  
[St. Petersburg Museum of History](#)  
[Tampa Bay History Center](#)  
[University of South Florida, Special Collections Library](#)  
[University of South Florida, Digital Archive](#)  
[The Weekly Challenger Digital Newspaper Archive](#)

### National Organizations

[National Trust for Historic Preservation](#)  
[Society for Commercial Archaeology \(Roadside Architecture\)](#)

### Statewide Organizations

[Florida Humanities Council](#)  
[Florida Main Street Program](#)  
[Florida Public Archaeology Network](#)  
[Florida State Historic Preservation Office](#)  
[Florida Trust for Historic Preservation](#)

### Local Organizations

[African American Heritage Association of St. Petersburg](#)  
[American Institute of Architects, Tampa Bay Chapter](#)  
[American Planning Association, Suncoast Chapter](#)  
[CNU \(Congress for New Urbanism\) Tampa Bay](#)  
[Preserve the 'Burg](#)  
[ULI \(Urban Land Institute\) Tampa Bay](#)

### Professional Information

[Building Technology Heritage Library](#)  
[Traditional Building](#)

Registry for Approved Transfer of Development Rights, Historic					
	Contact	Name of Property	# TDRs Established (Square Feet)	# TDRs Transferred (Square Feet)	# TDRs Available (Square Feet)
TDR 08-01	<b>Historic YMCA</b> Nick Ekonomu PO Box 330537 Miami, FL 33233-0537 305-904-9522 ehff.nick@gmail.com	<b>Historic YMCA</b> 116 5th Street South 19-31-17-74466-038-0110	595,160.00 No: TDR 08-01 On: 03.21.2008	515,160	80,000.00
	<b>SP Central, LLC, a Delaware LLC</b> Attn: Mathew Poling 200 Central, Ste. 1600 St. Petersburg, FL 33701 813-227-7439 mpoling@trenam.com	Not Assigned	Purchased	515,160 No: 21-90500004 On: 10.22.2021	515,160.00 Not assigned
TDR 08-02	<b>Snell Arcade Condo Assoc, Inc.</b> Dar Webb, President 405 Central Avenue, Suite 250 St. Petersburg, FL 33701 727-822-3743 (land) 727-688-3775 (cell) dar@webette.com	<b>Snell Arcade</b> 405 Central Avenue 19-31-17-83226-000-0001	609,420.00 No: TDR 08-02 On: 11.21.2008	609,420	Zero
	<b>Taub Entities-St. Pete, LLC</b> Brian Taub 921 Anchorage Road Tampa, FL 33602	<b>Bliss</b> 176 4th Avenue NE 19-31-17-77238-000-0040	Purchased	10,010.00 No: 15-90500002 On: 05.20.2015	Zero Project Built 10,010 Credits Retired
	<b>KT First &amp; First, LLC</b> William Johnson, Manager 701 S. Olive Avenue West Palm Beach, FL 33401	<b>One St. Pete</b> 100 1st Avenue No. 19-31-17-92416-001-0010	Purchased	209,963.00 No: 16-90500001 On: 06.09.2016	Zero Project Built 209,963 Credits Retired

<b>4th Street Storage Associates, LLC</b> Jonathan Dorman 2106 Bispham Road, Ste. B Sarasota, FL 34231	<b>Extra Space Storage</b> 7220 4th Street North 30-30-17-40749-001-0010	Purchased	16,393.00 No: 17-90500001 On: 01.04.2017	Zero Project Built 16,393 Credits Retired
<b>4th Street Storage Associates, LLC</b> Jonathan Dorman 2106 Bispham Road, Ste. B Sarasota, FL 34231	<b>Extra Space Storage</b> 7220 4th Street North 30-30-17-40749-001-0010	Purchased	5,187.00 No: 17-90500001 On: 01.27.2017	Zero Project Built 5,187 Credits Retired
<b>Greystar GP II, LLC</b> David King, Vice President 465 Meeting Street, Ste. 500 Charleston, SC 29403	<b>Ascent St. Petersburg</b> 225 1st Avenue North 19-31-17-74466-021-0121	Purchased	110,000 No: 19-90500001 On: 03.04.2021	Zero Project Under Construction 110,000 Credits Retired
<b>KT St Pete Bayfront LLC</b> 701 S. Olive Avenue West Palm Beach, FL 33401	<b>Saltaire</b> 301 1st Street South 19-31-17-74466-057-0010	Purchased	170,862 No: 20-90500001 On: 03.31.21	Zero Project Under Construction 170,862 Credits Retired
<b>4th Street Storage Associates, LLC</b> Jonathan Dorman 2106 Bispham Road, Ste. B Sarasota, FL 34231	<b>Extra Space Storage</b> 7220 4th Street North 30-30-18-21654-000-0040	Purchased	3,400.00 No.: 21-90500002 On: 04.01.2021	Zero Project in Permitting 3,400 Credits Retired
<b>PC II Holdings, a Delaware LLC</b> Attn: Mathew Poling 200 Central, Ste. 1600 St. Petersburg, FL 33701 813-227-7439 mpoling@trenam.com	<b>Not Assigned</b>	Purchased	3,262.00 No: 22-90500008 On: 12.15.2021	3,262.00 Not Assigned
<b>Central Properties IV, a Delaware LLC</b> Attn: Mathew Poling	<b>Not Assigned</b>	Purchased	80,343.00 No: 22-90500007	80,343.00 Not Assigned

	200 Central, Ste. 1600 St. Petersburg, FL 33701 813-227-7439 mpoling@trenam.com			On: 12.15.2021	
TDR 08-03	<b>Flori De Leon Cooperative Apts., Inc.</b> 130 4th Avenue North St. Petersburg, FL 33701 Terry Smith 727-488-8197 klaus651@aol.com	<b>Flori De Leon</b> 130 4th Avenue North	938,640.00 No: TDR 08-03 On: 12.12.2008	563,640	375,000.00
	<b>Greystar GP II, LLC</b> David King, Vice President 465 Meeting Street, Ste. 500 Charleston, SC 29403	<b>Ascent St. Petersburg</b> 225 1st Avenue North 19-31-17-74466-021-0121	Purchased	50,088 No: 21-90500001 On: 03.10.2021	Zero Project Under Construction 50,088.00 Credits Retired
	<b>St. Pete Propco, LLC</b> Attn: Mathew Poling 200 Central, Ste. 1600 St. Petersburg, FL 33701 813-227-7439 mpoling@trenam.com	<b>Not Assigned</b>	Purchased	513,552 No: 21-90500003 On: 10.22.2021	513,552.00 Not assigned
TDR 08-05	<b>Crystal Bay (Sunset Hotel)</b> Mark Tong/Al La Far 7401 Central Ave, St. Petersburg lyraestarsystems@gmail.com 808-937-2510	<b>Sunset Hotel</b> 7401 Central Avenue 19-31-16-20484-041-0010	358,180.00 No: TDR 08-05 On: 11.21.2008	358,180.00	Zero
	<b>ALV 334 St. Pete, LLC</b> Granvil Tracy 800 Brickell Ave., PH1 Miami, FL 33131	<b>"The Project"</b> 352 2nd Avenue S. 19-31-17-90465-001-0010	Purchased	134,626.00 No: 20-90500001 On: 05.20.2020	Zero Project Under Construction 134,626.00 Credits Retired

	<b>PLDD 1st Avenue, LLC</b> Attn: Mathew Poling 200 Central, Ste. 1600 St. Petersburg, FL 33701 813-227-7439 mpoling@trenam.com	<b>Not Assigned</b> c/o Denunzio Group	Purchased	223,554.00 No: 21-90500006 On: 11.01.2021	223,554.00 Not Assigned
TDR 09-01	<b>The Cathedral Church of St. Peter, Inc.</b> Dean Stephen Morris 140 4th Street North St. Petersburg, FL 33701 727.822.4173	<b>St. Peter's Episcopal</b> 140 4th Avenue No. 19-31-17-74466-020-0010	198,120.00 No: TDR 09-01 On: 04.17.2009	198,120	Zero
	<b>PC II Holdings, a Delaware LLC</b> Attn: Mathew Poling 200 Central, Ste. 1600 St. Petersburg, FL 33701 813-227-7439 mpoling@trenam.com	<b>Not Assigned</b>	Purchased	198,120 No: 21-90500005 On: 11.01.2021	198,120.00 Not Assigned
<b>TOTAL BALANCE, INCLUDING "PURCHASED - NOT ASSIGNED":</b>					<b>1,988,991.00</b>
<b>TOTAL BALANCE, EXCLUDING "PURCHASED - NOT ASSIGNED":</b>					<b>455,000.00</b>

**UPDATED:** Contact Info: February 4, 2022  
 Credit Numbers: February 4, 2022

**NOTE:** *Options* are being taken on remaining credits. These *options* are typically not reported to the Planning and Development Services Department. Be advised, the total balance may be further constrained by these *options*, which are not reflected in the calculated total.



# PRESERVATION INCENTIVES for HISTORIC PROPERTIES

The following is a list of resources and considerations pertaining to historic preservation. Eligibility will vary based on location, historic integrity, and designation status of the property. Please contact the City's Historic Preservation Office for further information.

## 1. **Rehabilitation Ad Valorem Tax Exemption**

This local program exempts owners from some property taxes based on the value added to qualifying historic properties by certain rehabilitation projects. The exemption is valid for a period of ten years and can apply to up to 12.1 mills of property taxes. There is presently no cap to the calculable rehabilitation expenses exempted, but the cost of a project must exceed 10% of the property's beginning value to qualify (*St. Petersburg City Code Section 16.30.070.7.4*). This benefit applies to property that is individually listed in the National Register of Historic Places, is designated individually as a Local Historic Landmark, or is identified as a contributing resource within a National Register Historic District or local historic district.

## 2. **Federal Rehabilitation Income Tax Credit**

Federal program for qualifying income-producing historic properties that allows a direct dollar for dollar reduction in the amount of income taxes owed. The amount of credit is 20% of the qualifying cost of the rehabilitation. For a \$50,000 rehabilitation, this would equal a \$10,000 credit on federal income taxes. This benefit applies to income-producing property that is individually listed in the National Register of Historic Places, or is identified as a contributing resource within a National Register Historic District.

## 3. **Courtesy Design and Maintenance Assistance**

City staff is credentialed in historic preservation and architectural history, and routinely provides courtesy assistance to the owners of historic properties with their maintenance, rehabilitation, and design decisions.

## 4. **Adaptive Reuse**

Landmarked buildings may be re-purposed for certain uses that are otherwise prohibited within the applicable zoning category (*St. Petersburg City Code Section 16.30.020*). A property must be individually listed in the National Register or St. Petersburg Register of Historic Places to qualify.

## 5. **Certificate of Appropriateness Program (COA)**

Local program for qualifying historic properties that allows streamlined design review for certain rehabilitation or restoration projects. In addition, compatibility input and historic research are also available for qualifying historic properties at no additional cost. This benefit applies to property that is designated individually, or is located within a local historic district.

## 6. **Floor Area Ratio Exemption**

Qualified local historic landmark properties within the Downtown Core are exempt from inclusion in the gross floor area calculation, meaning it has no depreciative impact on the development potential of new construction (*St. Petersburg City Code Section 16.20.120.6.1*). This benefit applies to property that is designated individually as a local historic landmark. Designation may be processed simultaneously with development approvals.

## 7. **Florida Building Code Exemption**

Pursuant to Section 1201 of the Florida Building Code, certain exemptions may be granted to protect the elements, spaces, and features that make qualified buildings historic or architecturally significant. Contributing resources within a National Register district and local historic landmarks can both qualify for this exception.

**8. Transfer of Development Rights for Historic Properties**

Qualified local historic landmark properties may receive financial benefits through the sale of certain development rights attributable to other property owners who purchase them.

**9. Historic Preservation and Conservation Grant Program, Intown Redevelopment Plan.**

In 2018, City Council approved up to \$5 million in the Intown Redevelopment Plan budget to support the continued rehabilitation and conservation of historic properties located within the Intown Redevelopment Area. Funding is allocated to eligible properties through a competitive grant process. Applicants are eligible for a matching grant up to \$250,000, not to exceed more than 50 percent (%) of the total eligible project costs. In 2019, five (5) projects received a total \$808,787.

**10. Certified Local Government Grants and Assistance**

As a certified local government in historic preservation, matching grants are available for qualifying governmental organizations and nonprofits from the State of Florida for historic surveys, design assistance, acquisition, and rehabilitation preservation projects. Several grant categories are available with the most common for a small matching grant up to \$50,000, while special category grants are available up to \$500,000. Eligible projects include awards to property owners or tenants, as well as smaller award in which the City partners to develop enhancements and planning tools, such as interpretative signage or historic resource surveys.

**11. Conservation / Preservation Easement Incentive**

Pursuant to FL Statute 704.06, tax deductions are available for donating certain architectural easements held by a local, state, or federal non-profit organization or government. A preservation easement is a voluntary legal agreement that protects a significant historic, archaeological, or cultural resource. An easement provides assurance to the owner of a historic or cultural property that the property's intrinsic values will be preserved through subsequent ownership. In addition, the owner may obtain certain tax benefits. For example, a façade easement donation allows a historic property to be used as it currently is, as well as, allowing compatible changes into the future, while preserving its exterior character and possibly increasing the economic viability of the building to future tenants. The Snell Arcade, located at the intersection of Central Avenue and 4<sup>th</sup> Street North, is one example of a building with an existing façade easement.

**12. Florida Coastal Partnerships Initiative**

As a linked program, matching grants and funding may be available locally through the State of Florida for historic working waterfronts and disaster-prone historic resources for improving resiliency to coastal hazards, revitalization, small construction projects, etc. Awards typically range from \$30,000 and no less than \$10,000 for construction projects or land acquisition; and no more than \$15,000 and no less than \$10,000 for planning, design and coordination activities.

**13. Florida Mitigation Assistance Program**


Funding is available through local communities, the State of Florida, and FEMA for retrofitting historic properties to become less prone to flooding. This includes design and construction assistance.

**14. Community Development Block Grant (CDBG) funding**

An array of funding and assistance is available for historic preservation activities within CDBG areas and neighborhoods including historic surveys, plans, rehabilitation, etc.

**CITY OF ST. PETERSBURG'S HISTORIC PRESERVATION MAP MODULE**

In order to identify the status of your property, please visit the City of St. Petersburg's Historic Preservation map module, an interactive mapping feature:

1. Click on the link: <http://goo.gl/R8LOfh>
2. Click on the following icon to reveal information layers: 
3. Click on the small arrow to the left of each check box to reveal additional sub-layers of information
4. Click on the checkbox to activate a layer for viewing on the interactive map
5. Enter your street address into the search box at the upper left corner or manually zoom

Introductions

CRISLIP · ARCADE

# HISTORIC PRESERVATION ANNUAL REPORT

City Council and Community Planning and Preservation Commission, March 31, 2022



Al Downing Jr. Band



# JORDAN DANCE HALL - MANHATTAN CASINO

Builder: Elder Jordan | Contractor: R.L. Sharpe | Year Built: 1925 | Local Landmark 1994

*Photo By [unclear]*



Photo Circa 1972  
St. Petersburg Times

# JORDAN DANCE HALL - MANHATTAN CASINO

Builder: Elder Jordan | Contractor: R.L. Sharpe | Year Built: 1925 | Local Landmark 1994

Photo 1994



# JORDAN DANCE HALL - MANHATTAN CASINO

Builder: Elder Jordan | Contractor: R.L. Sharpe | Year Built: 1925 | Local Landmark 1994

Photo Circa 2010



# JORDAN DANCE HALL - MANHATTAN CASINO

Builder: Elder Jordan | Contractor: R.L. Sharpe | Year Built: 1925 | Local Landmark 1994

# African-American Heritage Trail

Community, Culture, and Commerce

22nd Street South Corridor

## Manhattan Casino Hall

### Role in the Community

Strom and Circa 1941

Originally known as the Jordan Dance Hall, this building was constructed about 1925 by Elder Jordan Sr., one of the first African-American businessmen, and his sons.

The ticket window was located on the first floor. The dance hall interior was accessed by wooden steps that opened onto a large wooden dance floor known to be the best hard oak, wood dance floor in the state. A raised band stand was located at the south end, and long benches lined the walls along both sides.

The building, a stop on the renowned Chitlin' Circuit, was the focal point of culture and entertainment in the community for

more than 40 years and was instrumental in the development of blues, gospel, jazz, and big band music in the South during the era of segregation.

More than just a concert venue, the building played host to a variety of community events including dances, coronations, and the Gibbs High School Junior and Senior proms. At times, the Gibbs High School basketball team even held practices in the building.



Photo courtesy of African Public

### Entertainment

George Grogan

George Grogan was instrumental in molding the character of the Manhattan Casino. As a concert promoter, he booked bands all over the state of Florida. Grogan is also credited with giving James Brown his start. Brown played every Thursday and Saturday night until getting his big break. In addition to promoting music, Grogan managed Jordan Park.



Photo courtesy of the Tampa Bay Times

William L. "Buddy" West

A promoter and entrepreneur, Buddy West is credited with booking the Don Redman Band, the first noted big band to perform at the Manhattan Casino. West was also responsible for booking Louis Armstrong, Fats Waller and Earl "Fatha" Hines at the Casino.



Photo courtesy of the Tampa Bay Times

Al Downing

Al Downing is legendary to those who remember the golden days of jazz in St. Petersburg. Piano talent and a desire to perpetuate jazz among young people everywhere were two qualities Downing possessed. Downing served



Goldie Thompson

Goldie Thompson, a resident of Jordan Park and an ordained minister in the Baptist church, is considered a pioneer in African-American broadcasting. Thompson began promoting



Gospel music on the Suncoast in 1940. Initially originating his daily programs from his home, Thompson eventually launched a weekly gospel broadcast on WFTS-TV. He also hosted a Sunday night gospel show from 1950 until the 1960s. Admissions was 20-75 cents. Show and Buster Cooper's, cousins of the band leader, went on to play with Lionel Hampton and Duke Ellington.



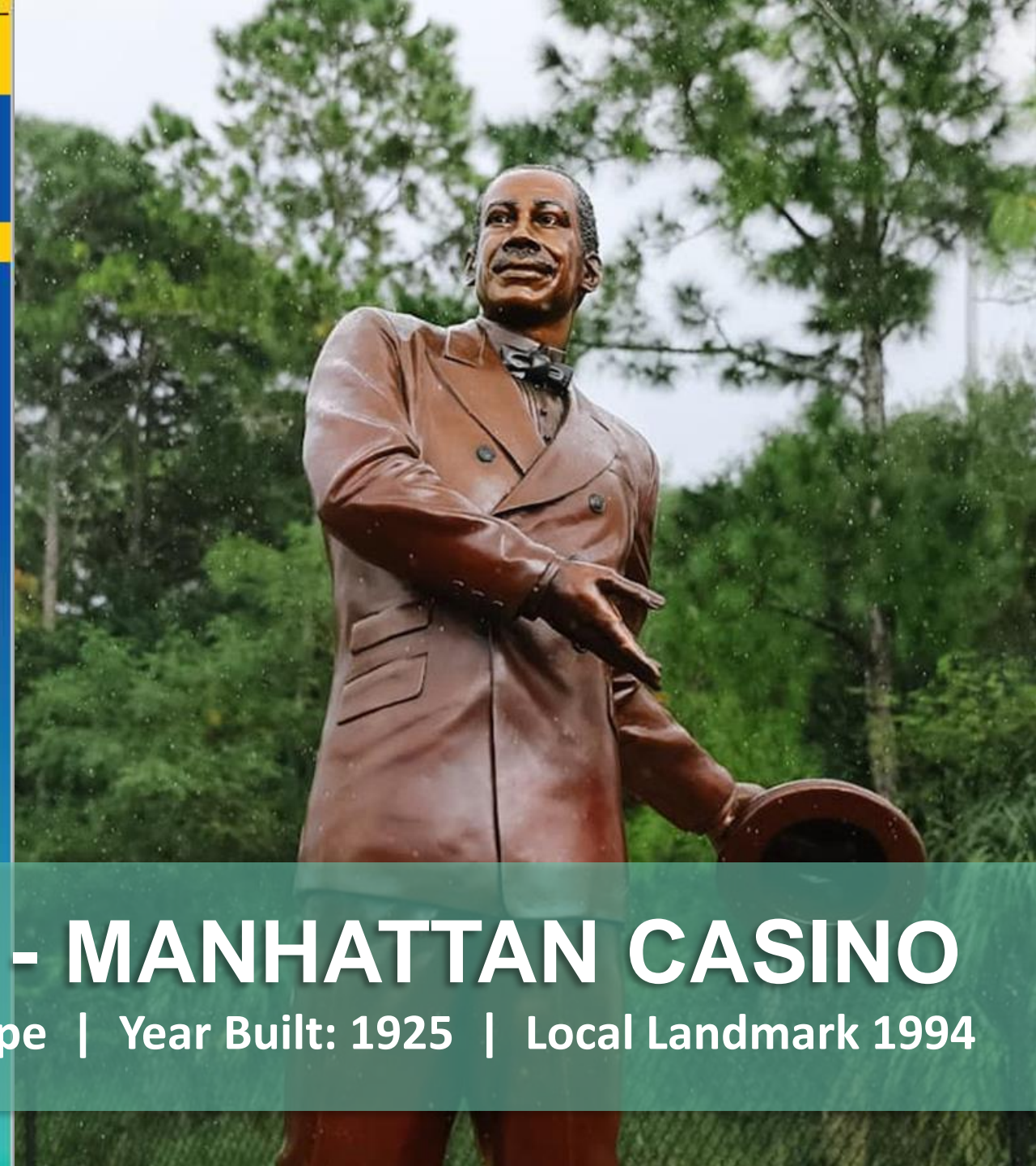
Photo courtesy of African Public

James Cooper Band

The James Cooper Band was a prominent group that performed at the Manhattan Casino. The band included, but was not limited to, such greats as: Cecil Davis, Lionel Hampton, Cub Calloway, Ray Charles, Nat King Cole, Ella Fitzgerald, Duke Ellington, Sarah Vaughn, Fats Domino, Ink Spots, Mahalia Jackson, The Silas Green Minstrel Show, Little Richard, Sister Rosetta



Photo courtesy of African Public



# JORDAN DANCE HALL - MANHATTAN CASINO

Builder: Elder Jordan | Contractor: R.L. Sharpe | Year Built: 1925 | Local Landmark 1994



# COUNCIL AND COMMISSION MEMBERS

City Council and Community Planning and Preservation Commission

## Regular Members

- Sharon Winters, Chair
- Lisa Wannemacher, Vice Chair
- Christopher “Chris” Burke
- Manitia Moultrie
- Thomas “Tom” Whiteman
- Vacant
- Vacant

## Alternate Members

- E. Alan Brock
- William “Will” Michaels
- Jeffrey M. Wolf

## City Council Members

- Gina Driscoll, Chair, District 6
- Brandi Gabbard, Vice Chair, District 2
- Copley Gerdes, District 1
- Ed Montanari, District 3
- Lisset Hanewicz, District 4
- Deborah Figgs-Sanders, District 5
- Lisa Wheeler-Bowman, District 7
- Richie Floyd, District 8



# CITY STAFF MEMBERS

Urban Planning and Historic Preservation Division  
Planning and Development Services Department  
City of St. Petersburg, Pinellas County, Florida  
Municipal Services Center  
One Fourth Street North, 8<sup>th</sup> Floor  
St. Petersburg, Florida 33701  
[stpete.org/history](http://stpete.org/history)

**Michael Dema**  
Assistant City Attorney

**Heather Judd**  
Assistant City Attorney

**Michael Hernandez**  
GIS Senior Operations Specialist

**Elizabeth Abernethy**  
Director, Planning and Development Services  
(727) 893-7868, [elizabeth.abernethy@stpete.org](mailto:elizabeth.abernethy@stpete.org)

**Derek Kilborn**  
Manager, Planning and Historic Preservation  
(727) 893-7872, [derek.kilborn@stpete.org](mailto:derek.kilborn@stpete.org)

**Laura Duvekot**  
Historic Preservationist II  
(727) 892-5451, [laura.duvekot@stpete.org](mailto:laura.duvekot@stpete.org)

**Kelly Perkins**  
Historic Preservationist II  
(727) 892-5470, [kelly.perkins@stpete.org](mailto:kelly.perkins@stpete.org)

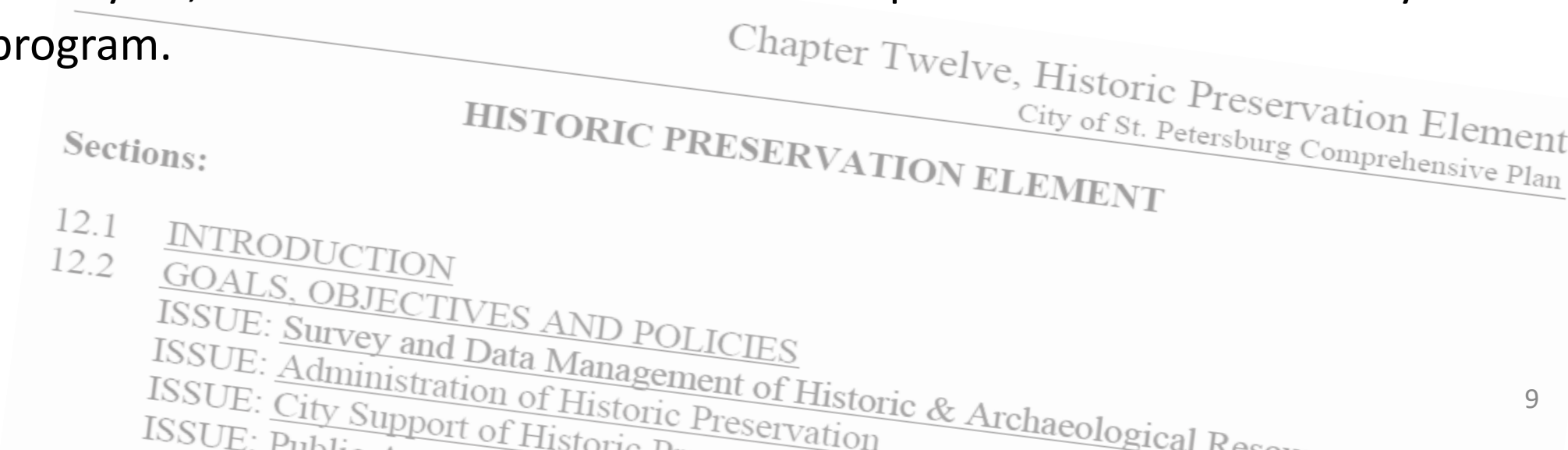
**Katherine “Kate” Connell**  
Administrative Assistant  
(727) 893-7871, [katherine.connell@stpete.org](mailto:katherine.connell@stpete.org)



# COMPREHENSIVE PLAN POLICY HP 4.6

## Chapter 12: Historic Preservation Element, City of St. Petersburg Comprehensive Plan

The commission(s) designated in the LDRs and City Council shall annually conduct a joint workshop which will include input from the commission(s) designated in the LDRs, the preservation community and the development community. At that time, staff will present a report concerning the activities of the Commission during the past year, including the identification of known historic and archaeological resources lost during the past year, and recommendations for improvements to the City's preservation program.





**PUBLIC**

Secretary of the Interior  
(Federal Level)

Division of Historical Resources  
(State Level)

Urban Planning & Historic  
Preservation Division  
(Local Level)

**PRIVATE**

Residents & Property Owners

Conservationists & Historians  
(Nonprofits)

Building Trade Professionals &  
Development Community

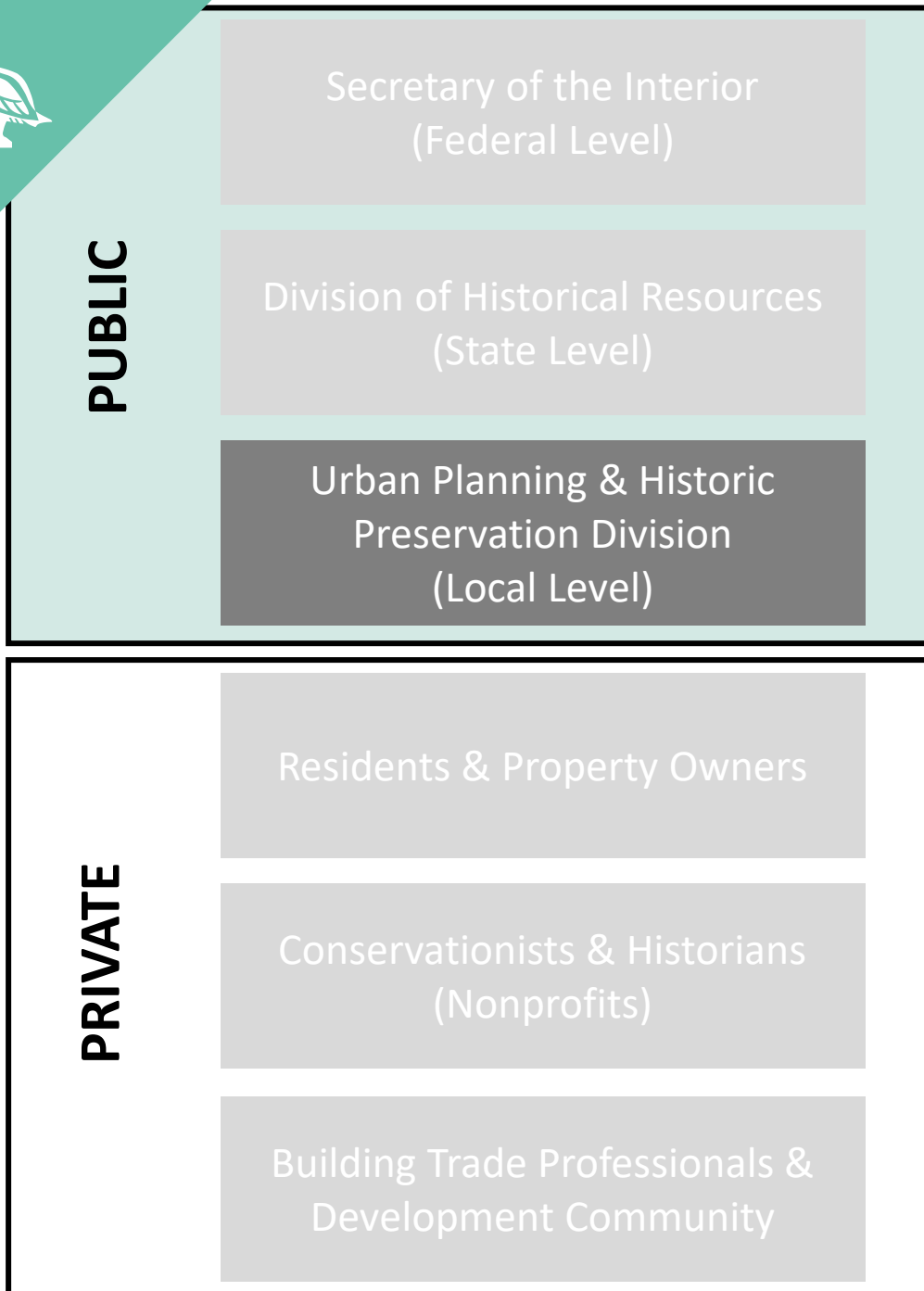




- National Register of Historic Places
- Secretary of the Interior’s Standards
- Section 106 and NEPA Reviews
- Federal Income Tax Exemption



- Certified Local Government (CLG)
- Florida Main Streets
- CLG funding
- State Historic Preservation Officer (SHPO) as intermediary w/ Federal



- Administer Historic and Archaeological Preservation Overlay
- Process Certificates of Appropriateness (COA)
- Make Recommendations on high-level COAs and landmark designations
- Incentives including AVT exemption, IRP grants, and TDRs



**PUBLIC**

Secretary of the Interior  
(Federal Level)

Division of Historical Resources  
(State Level)

Urban Planning & Historic  
Preservation Division  
(Local Level)

**PRIVATE**

Residents & Property Owners

Conservationists & Historians  
(Nonprofits)

Building Trade Professionals &  
Development Community



## **FISCAL YEAR 2020-2021**

### **INDIVIDUAL LOCAL HISTORIC LANDMARKS**

- 4 approved, all owner-initiated
- 1 withdrawn, third-party initiated
- 1 denied, request to rescind designation, owner-initiated

### **LOCAL LANDMARK DISTRICTS**

- 1 approved, ballot-initiated
- 1 consideration, not formal

### **POTENTIALLY ELIGIBLE PROPERTIES**

- 1 demolition approved and pending



## CERTIFICATE OF APPROPRIATENESS APPLICATIONS, FY 2020-21

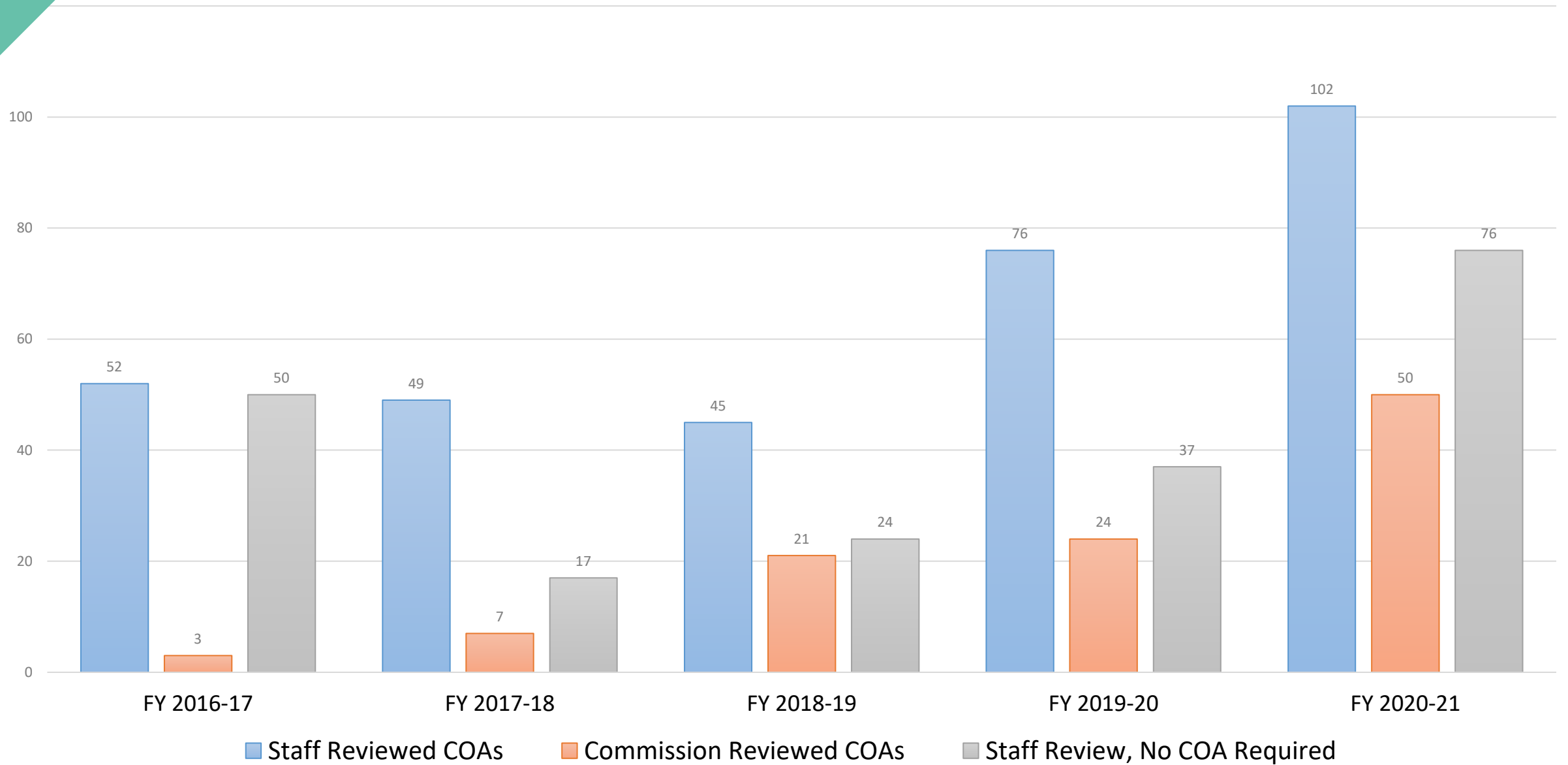
TOTAL	% REVIEWS	APPROVED	
102	44.7	98	Staff Review
50	21.9	46	Commission Review (CPPC)
76	33.3	NA	Staff Review, Determined No COA Required
228		220	Total Reviews

**Note:**

The Urban Planning and Historic Preservation Division has streamlined the COA process to include bundling several actions under a single COA review and using more discretion when determining whether actions are ordinary maintenance and repair.



# NUMBER OF COA REVIEWS IN THE LAST FIVE YEARS





# HISTORIC SIGNIFICA



CITY OF ST. PETERSBURG, FLORIDA

## ST. PETERSBURG LEGACY BUSINESSES

Urban Planning and Historic Preservation Division  
 Planning and Development Services Department  
 City of St. Petersburg  
 Municipal Services Center  
 One Fourth Street North, 8<sup>th</sup> Floor  
 St. Petersburg, Florida 33701



CITY OF ST. PETERSBURG, FLORIDA

## ST. PETERSBURG MARKERS and MONUMENTS

Urban Planning and Historic Preservation Division  
 Planning and Development Services Department  
 City of St. Petersburg  
 Municipal Services Center  
 One Fourth Street North, 8<sup>th</sup> Floor  
 St. Petersburg, Florida 33701

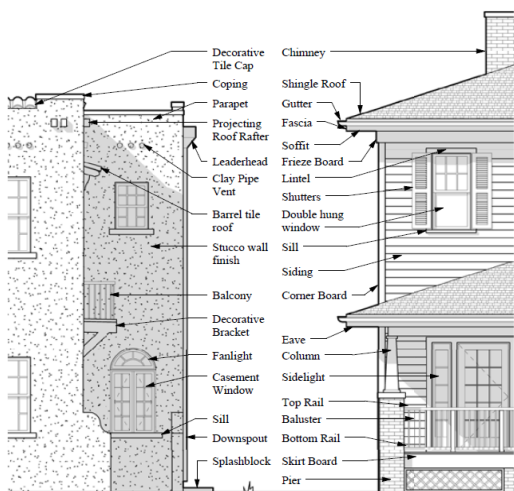


CITY OF ST. PETERSBURG, FLORIDA

## RESOURCE and RESEARCH GUIDE

Urban Planning and Historic Preservation Division  
 Planning and Development Services Department  
 City of St. Petersburg  
 Municipal Services Center  
 One Fourth Street North, 8<sup>th</sup> Floor  
 St. Petersburg, Florida 33701

### ANATOMY OF A HOUSE



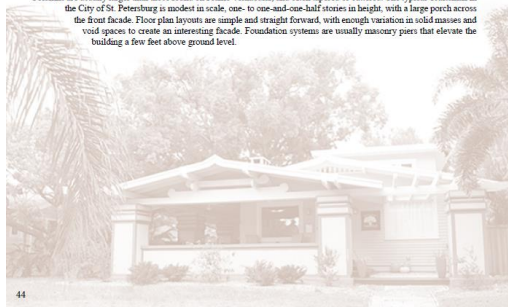
### 3 ARCHITECTURAL STYLES

## CRAFTSMAN 1905-1930

The Craftsman "Bungalow" was the most widespread housing form in America in the early part of the twentieth century. Emerging from the late nineteenth century English Arts and Crafts Movement, the style evolved as an architectural response to the highly ornate Stick, Shingle, Queen Anne and eclectic designs that were often exclusive to wealthier classes. This particular architectural form traces its origins to the architecture of several California architects at the turn of the century, particularly two brothers, Charles and Henry Greene. Their home designs were influenced by Asian, Swiss and American architecture and exhibited a healthy honest exposure of construction materials and workmanship which made ornament unnecessary.

Craftsman houses are often referenced as being "bungalows" since they are typically smaller dwellings. The style developed in the late nineteenth and early twentieth centuries as a single family housing type that became widespread through extensive distribution of mail order plans; it is found in almost all Florida towns, as it was inexpensive, attractive, and provided all the amenities of a suburban dwelling.

The materials are similar to those found in the Frame Vernacular. There is some attempt at decoration which may be found on window surrounds, column bases and capitals, gable-end trim, and decorative cutting on rafter ends. Windows are often grouped with separation to allow for window sash weights. Chimneys are typically brick with simple decorative caps. Columns are usually larger than those found on Frame Vernacular, and often tapered or battered. The typical Craftsman in the City of St. Petersburg is modest in scale, one- to one-and-one-half stories in height, with a large porch across the front facade. Floor plan layouts are simple and straight forward, with enough variation in solid masses and void spaces to create an interesting facade. Foundation systems are usually masonry piers that elevate the building a few feet above ground level.



### 3 ARCHITECTURAL STYLES

### MASSING & COMPOSITION

#### MASSING

- NARROW FRONT**
- One- to two-story mass
  - Hip roof with 3:12 to 8:12 roof pitch

#### BROAD FRONT

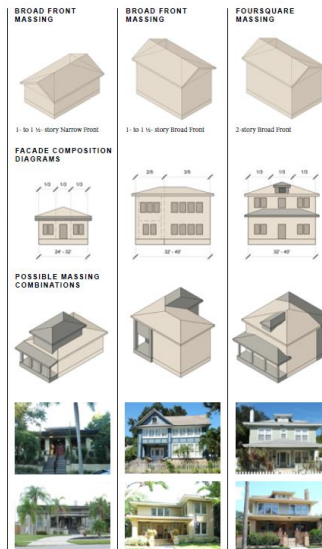
- Prairie: Two-story rectangular volume with recessed entry porch
- Hip or gable roof with 3:12 to 6:12 roof pitch
- Foursquare: Two-story square volume with one-story entry porch on front facade which typically runs the width of the house
- Hip roof with 3:12 to 6:12 roof pitch

#### FAÇADE COMPOSITION

- Symmetrical, balanced placement of doors and windows
- Windows are often grouped in pairs and multiples to create larger openings
- Entrance doors are typically under porches

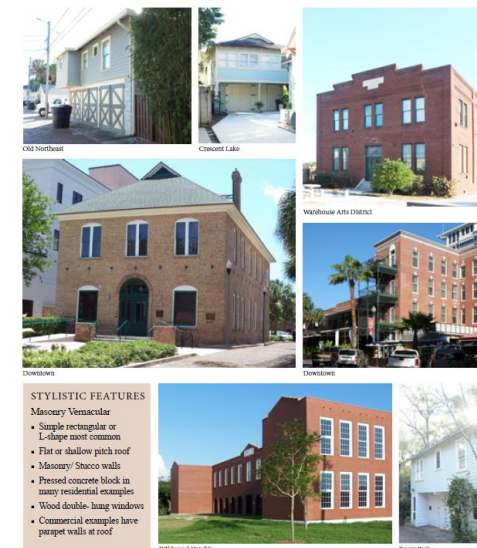
#### MASSING COMBINATIONS

- Larger living space forms may be created by combining side and/or rear wings with the main body
- Gabled or hipped dormers are present on the Foursquare variant
- The architectural character of the attached elements should match that of the main body



### 3 ARCHITECTURAL STYLES

### GALLERY OF EXAMPLES



#### STYLISTIC FEATURES

- Masonry Vernacular
- Simple rectangular or L-shape most common
- Flat or shallow pitch roof
- Masonry/ Stucco walls
- Precast concrete block in many residential examples
- Wood double-hung windows
- Commercial examples have parapet walls at roof



## LEGISLATIVE SESSION

### **BUILDING REGULATIONS IN THE FLOODPLAIN (HB 423)**

- Regulating demolitions in the floodplain.

### **MAIN STREET TOURISM AND HISTORIC REVITALIZATION ACT (SB 1310)**

- Would have provided a tax credit of up to 20% of total eligible costs for rehabilitation of a certified historic structure; up to 30% if located within a Florida Main Street community

### **RETAILS SALES TAX EXEMPTION**

- Replacement of windows and doors with impact resistant



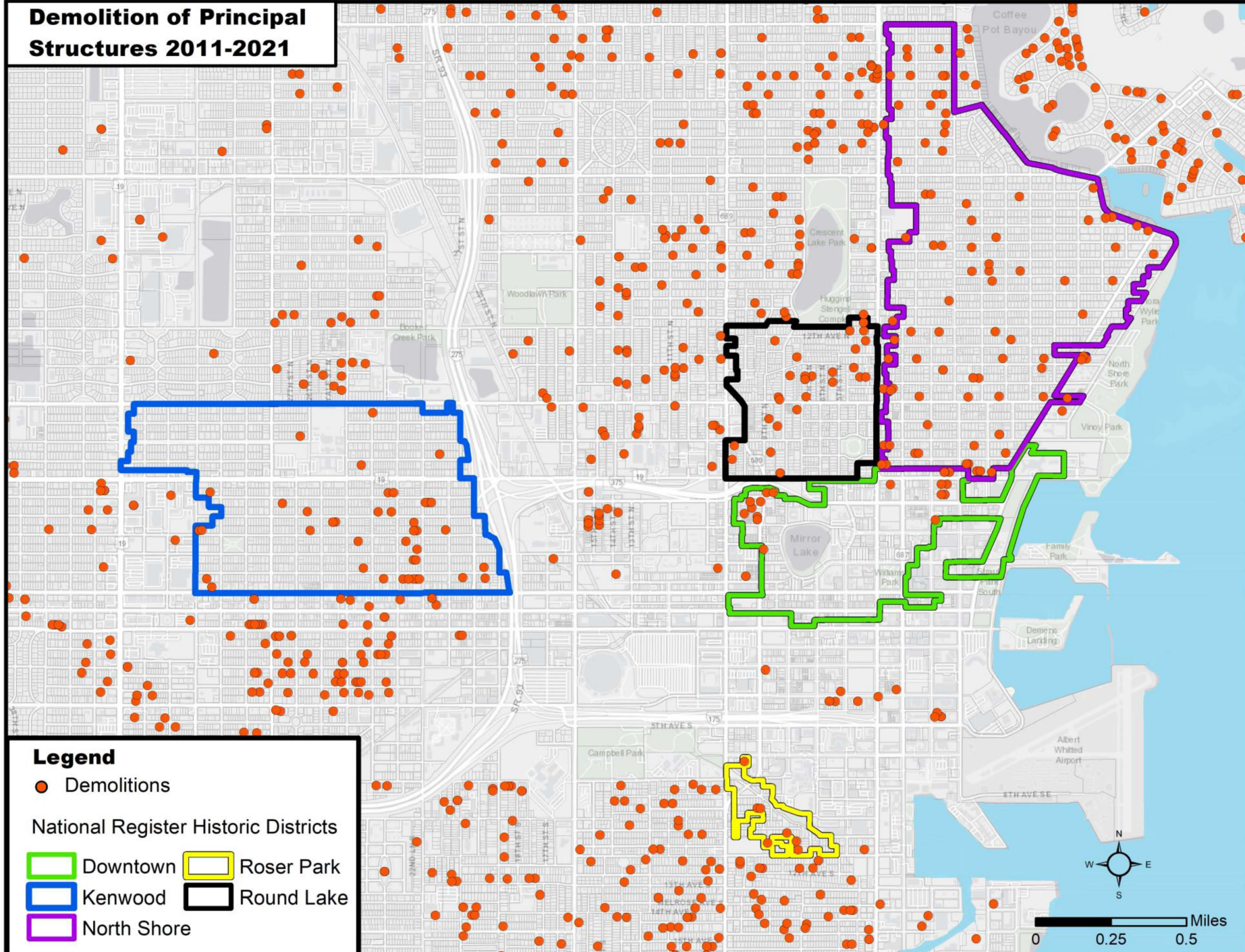
## **NATIONAL REGISTER HISTORIC DISTRICTS**

- Downtown St. Petersburg NRHD – 1 contributing resource
- Kenwood NRHD – 10 contributing resources
- North Shore NRHD – 12 contributing resources
- Roser Park NRHD – 1 contributing resources
- Round Lake NRHD – 2 contributing resources

## **NOTEWORTHY PROPERTIES**

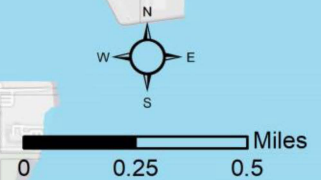
- Downtown NRHD Contributing and Considered Locally Significant:  
Woolworth's/Dome Grill – 551 Central Ave (1926)
- *(Pending Demolition)* Downtown NRHD Contributing and PEL: Mitchell-Stanton Apartments – 211 3<sup>rd</sup> St N (c. 1921)

# Demolition of Principal Structures 2011-2021

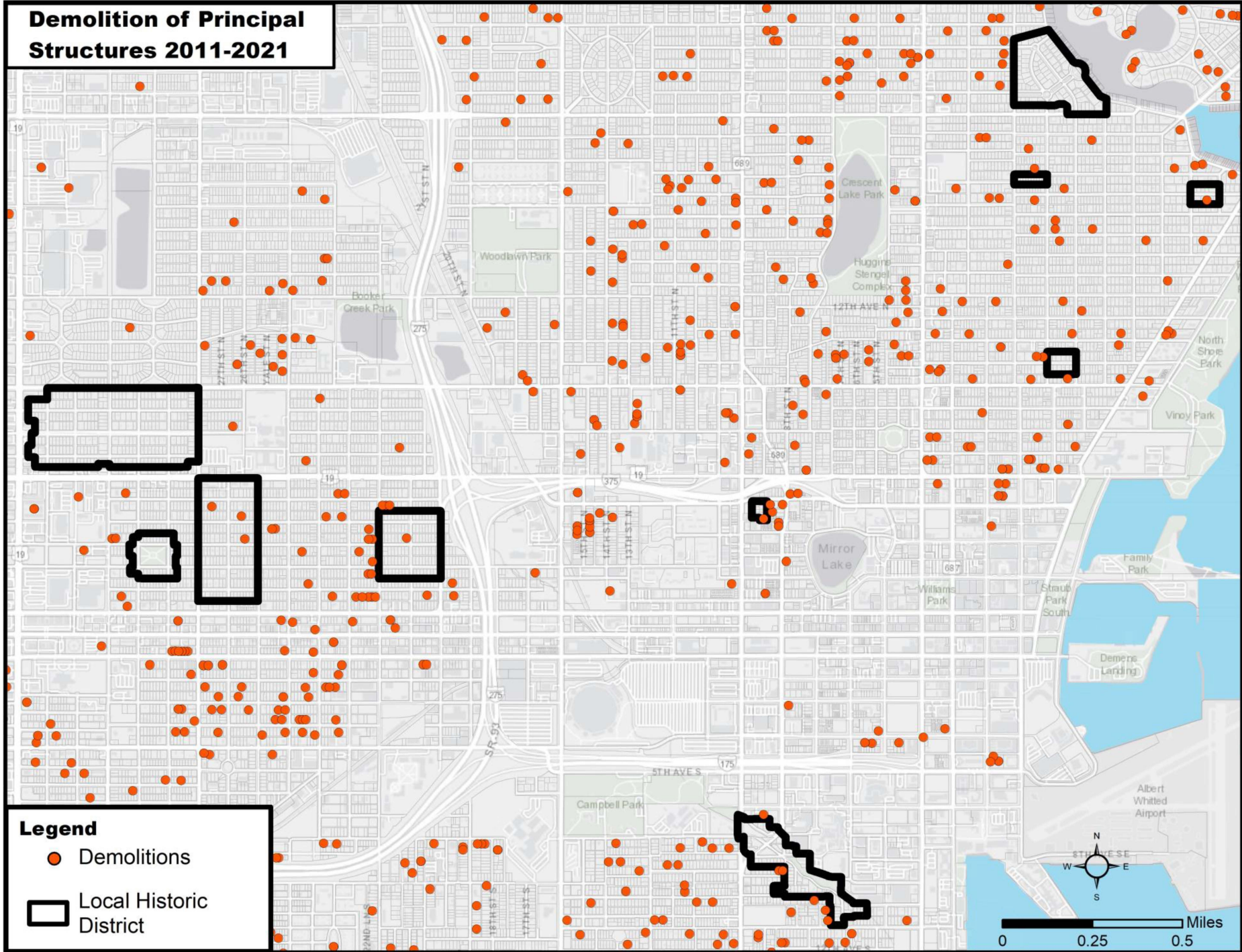


## Legend

- Demolitions
- National Register Historic Districts
  - Green outline: Downtown
  - Blue outline: Kenwood
  - Purple outline: North Shore
  - Yellow outline: Roser Park
  - Black outline: Round Lake



# Demolition of Principal Structures 2011-2021



**Legend**

- Demolitions
- Local Historic District

0 0.25 0.5 Miles



## **Improvements to COA Process and Traditional Streetscape Requirements**

- Update COA Matrix update
- Update Design Guidelines for Historic Properties
- Hexagonal concrete block sidewalk pavers

## **Housing Inventories and Affordable Housing**

- List of Potentially Eligible Properties or Demolition Delay Alternatives
- Target historic resource surveys of underrepresented neighborhoods and affordable building typologies

## **Incentives for Preservation**

- Update Transfer of Development Rights (TDR,H) program
- Re-open application cycle for Historic Conservation and Preservation IRP Grant

## **Education and Other**

- Update Comprehensive Plan as part of StPete2050 Improvements
- Dedicated funding source for maintenance and expansion of heritage trail program
- Initiate individual historic marker program through UPHP Division



# THANK YOU

Urban Planning and Historic Preservation Division  
Planning and Development Services Department  
City of St. Petersburg, Pinellas County, Florida  
Municipal Services Center  
One Fourth Street North, 8<sup>th</sup> Floor  
St. Petersburg, Florida 33701  
[stpete.org/history](http://stpete.org/history)

**Michael Dema**  
Assistant City Attorney

**Heather Judd**  
Assistant City Attorney

**Michael Hernandez**  
GIS Senior Operations Specialist

**Elizabeth Abernethy**  
Director, Planning and Development Services  
(727) 893-7868, [elizabeth.abernethy@stpete.org](mailto:elizabeth.abernethy@stpete.org)

**Derek Kilborn**  
Manager, Planning and Historic Preservation  
(727) 893-7872, [derek.kilborn@stpete.org](mailto:derek.kilborn@stpete.org)

**Laura Duvekot**  
Historic Preservationist II  
(727) 892-5451, [laura.duvekot@stpete.org](mailto:laura.duvekot@stpete.org)

**Kelly Perkins**  
Historic Preservationist II  
(727) 892-5470, [kelly.perkins@stpete.org](mailto:kelly.perkins@stpete.org)

**Katherine “Kate” Connell**  
Administrative Assistant  
(727) 893-7871, [katherine.connell@stpete.org](mailto:katherine.connell@stpete.org)