



## Property Description

Take advantage of very competitive lease rates and an occupancy ready suite! This centrally located office space is on West Lake Street, just west of South Lafayette Street, in South Lyon is available This first floor suite is 1,500 SF. The office has its own private parking and is located in the heart of Downtown South Lyon.

## Summary

**Available SF:** 1,500 SF  
(1st Floor)

**Cross Streets:** West Lake Street & Lafayette Street

**Lease Rate:** \$2,000/month  
Gross + Utilities

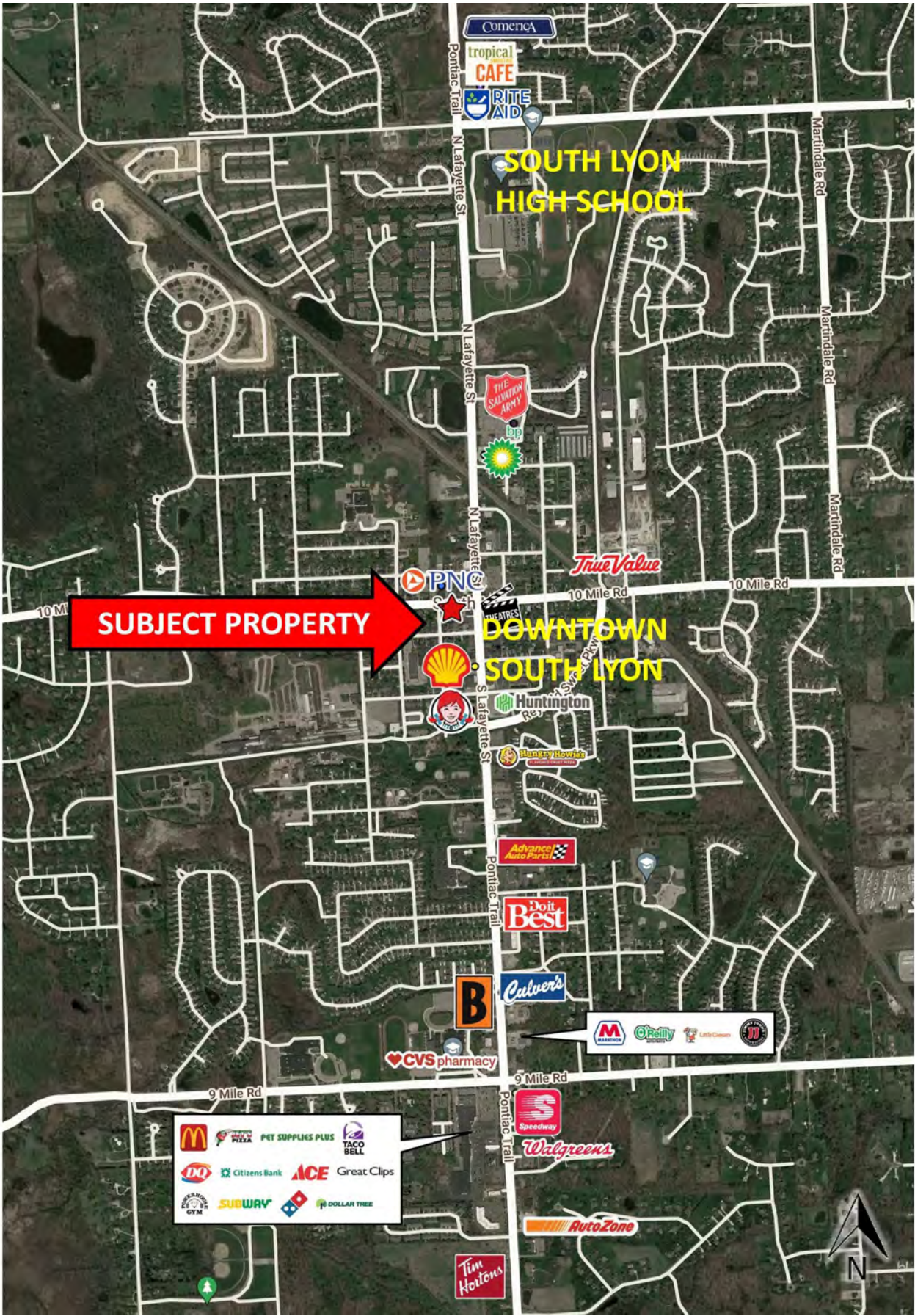


**Gerdom Realty & Investment | [www.GerdomRealty.com](http://www.GerdomRealty.com)**  
248-242-6766 | 640 Griswold Street, Suite 100, Northville, MI 48167

**MICHAEL MURPHY**  
mmurphy@gerdomrealty.com

**TJADER GERDOM**  
tgerdom@gerdomrealty.com











125 W Lake St South Lyon, MI 48178	1 mi radius	3 mi radius	5 mi radius
<b>Population</b>			
2022 Estimated Population	8,826	29,701	49,264
2027 Projected Population	8,858	29,830	49,592
2020 Census Population	8,927	29,704	49,313
2010 Census Population	8,460	25,709	39,766
Projected Annual Growth 2022 to 2027	-	-	0.1%
Historical Annual Growth 2010 to 2022	0.4%	1.3%	2.0%
2022 Median Age	42.1	41.4	41.5
<b>Households</b>			
2022 Estimated Households	3,947	11,704	19,254
2027 Projected Households	3,959	11,837	19,579
2020 Census Households	3,969	11,622	19,139
2010 Census Households	3,486	9,745	15,092
Projected Annual Growth 2022 to 2027	-	0.2%	0.3%
Historical Annual Growth 2010 to 2022	1.1%	1.7%	2.3%
<b>Race and Ethnicity</b>			
2022 Estimated White	91.2%	90.4%	88.5%
2022 Estimated Black or African American	1.9%	1.9%	2.3%
2022 Estimated Asian or Pacific Islander	2.8%	3.2%	4.4%
2022 Estimated American Indian or Native Alaskan	0.2%	0.2%	0.2%
2022 Estimated Other Races	4.0%	4.3%	4.6%
2022 Estimated Hispanic	2.8%	3.1%	3.4%
<b>Income</b>			
2022 Estimated Average Household Income	\$94,159	\$117,013	\$123,006
2022 Estimated Median Household Income	\$78,848	\$104,400	\$104,240
2022 Estimated Per Capita Income	\$42,158	\$46,134	\$48,094
<b>Education (Age 25+)</b>			
2022 Estimated Elementary (Grade Level 0 to 8)	0.7%	0.6%	0.8%
2022 Estimated Some High School (Grade Level 9 to 11)	4.7%	3.2%	2.6%
2022 Estimated High School Graduate	19.6%	18.6%	19.4%
2022 Estimated Some College	22.5%	19.1%	18.4%
2022 Estimated Associates Degree Only	8.3%	7.7%	8.1%
2022 Estimated Bachelors Degree Only	27.5%	28.5%	28.4%
2022 Estimated Graduate Degree	16.7%	22.3%	22.3%
<b>Business</b>			
2022 Estimated Total Businesses	369	826	1,422
2022 Estimated Total Employees	3,103	6,296	14,063
2022 Estimated Employee Population per Business	8.4	7.6	9.9
2022 Estimated Residential Population per Business	23.9	36.0	34.7

