



Property Description

Don't miss this opportunity to locate your office in the the heart of downtown South Lyon! This approximately 1,500 SF availability is on the first floor (former tattoo shop). The space has a front lobby, 2 restrooms, and 4 private offices. Plus, the property has private parking -rare for downtown!

Summary

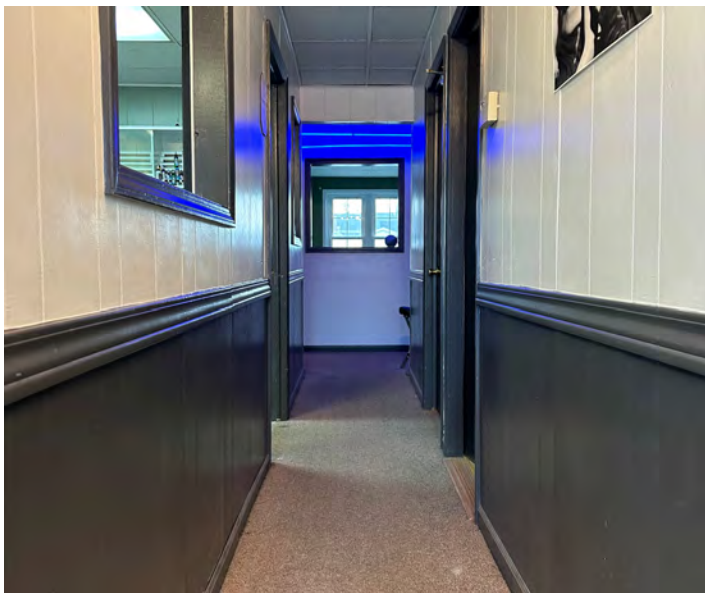
- Available Size:** 1,500 SF First Floor
West Lake Street & Lafayette Street
- Cross Streets:** Lafayette Street
- Lease Rate:** Contact Agent
- Zoning:** B-2; Central Business





- Citizens Bank
- DQ
- TACO BELL
- SUBWAY
- POWER HOUSE GYM
- PET SUPPLIES PLUS
- Great Clips
- ACE
- JET'S PIZZA
- McDonald's
- Tim Hortons
- Domino's
- DOLLAR TREE





129 W Lake St South Lyon, MI 48178	1 mi radius	3 mi radius	5 mi radius
Population			
2022 Estimated Population	8,659	28,422	49,416
2027 Projected Population	8,751	29,437	52,156
2020 Census Population	8,759	28,456	49,687
2010 Census Population	8,364	24,896	40,118
Projected Annual Growth 2022 to 2027	0.2%	0.7%	1.1%
Historical Annual Growth 2010 to 2022	0.3%	1.2%	1.9%
2022 Median Age	43.9	42.2	42.2
Households			
2022 Estimated Households	3,871	11,116	19,189
2027 Projected Households	3,943	11,637	20,489
2020 Census Households	3,908	11,108	19,275
2010 Census Households	3,449	9,440	15,217
Projected Annual Growth 2022 to 2027	0.4%	0.9%	1.4%
Historical Annual Growth 2010 to 2022	1.0%	1.5%	2.2%
Race and Ethnicity			
2022 Estimated White	88.5%	87.7%	85.8%
2022 Estimated Black or African American	2.2%	2.2%	2.5%
2022 Estimated Asian or Pacific Islander	2.9%	3.2%	4.4%
2022 Estimated American Indian or Native Alaskan	0.3%	0.3%	0.3%
2022 Estimated Other Races	6.2%	6.7%	7.0%
2022 Estimated Hispanic	2.9%	3.3%	3.6%
Income			
2022 Estimated Average Household Income	\$92,441	\$116,470	\$121,981
2022 Estimated Median Household Income	\$76,648	\$102,835	\$102,371
2022 Estimated Per Capita Income	\$41,371	\$45,579	\$47,387
Education (Age 25+)			
2022 Estimated Elementary (Grade Level 0 to 8)	0.9%	0.6%	0.7%
2022 Estimated Some High School (Grade Level 9 to 11)	5.2%	3.6%	2.9%
2022 Estimated High School Graduate	20.5%	19.6%	20.2%
2022 Estimated Some College	23.3%	20.1%	19.5%
2022 Estimated Associates Degree Only	8.3%	7.8%	8.1%
2022 Estimated Bachelors Degree Only	26.5%	27.6%	27.6%
2022 Estimated Graduate Degree	15.3%	20.8%	21.0%
Business			
2022 Estimated Total Businesses	367	800	1,427
2022 Estimated Total Employees	3,088	6,116	14,118
2022 Estimated Employee Population per Business	8.4	7.6	9.9
2022 Estimated Residential Population per Business	23.6	35.5	34.6

