

Household Hazardous Waste (HHW)

How to identify and properly dispose of HHW

Many products used to paint, clean, and maintain our homes, gardens and yards contain chemicals that may be toxic to human health and the environment when disposed of improperly.



What is Household Hazardous Waste?

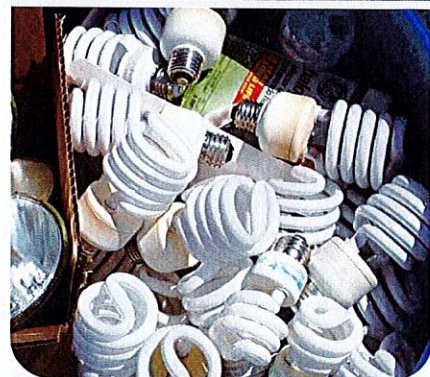
Household Hazardous Waste (HHW) is products used in and around your home that have one or more of the following characteristics: **Corrosivity; Toxicity; Flammability; Reactivity.** Read the label to determine which products require special handling. Warnings such as "poisonous or toxic", "flammable or ignitable", or "corrosive" are indicators that the items should be disposed of as HHW. Cleaners that contain strong acids, bleach or ammonia are also hazardous.

Paint and paint products that are oil-based and require the use of paint thinner or mineral spirits are hazardous. Water-based paints are not hazardous and can be prepared for safe disposal with household trash. To prepare latex paint for curbside pickup, mix paint with an absorbent such as cat litter, sawdust, or commercial paint hardener. Once the paint is solidified, place it in a trash bag and set it out on regular collection day. Learn how to reduce and reuse leftover paint on the RRRASOC website.

What to Do With Unwanted HHW

HHW requires special handling and disposal through licensed hazardous waste companies. Residents are encouraged to bring HHW to a special drop-off event, sponsored by RRRASOC and its member communities. The reverse side of this flyer lists the dates and locations of HHW collection events.

RRRASOC residents can drop off HHW at ERG Environmental Services in Livonia on non-event days without a fee. HHW pickup from your home is also available for a fee. For more information on drop-off or pickup services visit the RRRASOC website at rrrasoc.org

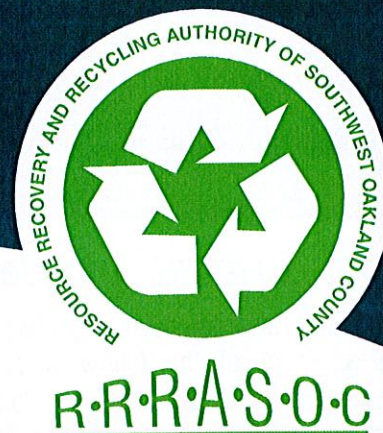


Tips for Transporting Household Hazardous Waste

- Keep items in their original and labeled containers.
- Do not mix the contents of unknown or unlabeled containers.
- Make sure that the containers are not leaking prior to bringing them to a collection event.
- Do not transport containers with open lids.
- Place chemicals away from passengers.
- Secure all containers so they cannot slide, tip or spill contents.

Resource Recovery and Recycling Authority of Southwest Oakland County
contact us at 20000 W. Eight Mile Rd. Southfield, MI 48075 online at www.RRRASOC.org or call 248.208.2270

Household Hazardous Waste (HHW)



Benefits of Proper HHW Management

Disposing of your HHW at special collection events or HHW facility benefits you, the community and the environment by:

- Keeping toxic chemicals out of landfills
- Reducing the potential for groundwater contamination
- Preventing pollution on our streets from garbage trucks
- Eliminating exposure to toxics for sanitation workers
- Protecting local bodies of water from contamination
- Reducing the incidence of household chemical poisoning of children and pets

Listed below are examples of accepted HHW

Kitchen/Bathroom

- Expired or unused medicines
- Drain cleaners
- Mercury thermometers
- Aerosol cans
- Bleach, ammonia
- Nail polish
- Metal polish with solvent

Miscellaneous

- Batteries (all types)
- Mercury
- Moth balls
- All propane tanks
- Acids
- Pool chemicals
- Fiberglass epoxy
- Lighter fluid
- Photo chemicals

Home Office

- Used computer equipment
(CPUs, monitors, mice, keyboards, scanners, printers, modems, TVs)

Garden

- Pesticides, herbicides
- Fungicides, insecticides
- Weed and feed
- Deck wash and stains

Garage

- Used oil, anti-freeze
- Brake, transmission fluids
- Gasoline, kerosene, diesel fuel, fuel oil
- Car batteries, battery acid

Workshop

- Fluorescent and CFL bulbs
- Glue-solvent based
- Oil-based paint and primer
- Solvents, paint thinner
- Turpentine
- Varnish and wood stain
- Wood preservatives

For Health's Sake: Dispose of HHW at a RRRASOC Special Collection Event

2022 Events

April 9th – Wixom

9:00 am – 2:00 pm
Wixom DPW
2041 Charms Road

April 23rd – Southfield

9:00 am – 2:00 pm
RRRASOC MRF – Truck Entrance
20875 Mapleridge Avenue

May 7th – Farmington Hills

9:00 am – 2:00 pm
Oakland Community College
Orchard Ridge Campus – Lot 8
27055 Orchard Lake Road

May 21st – Milford

9:00 am – 2:00 pm
Milford Civic Center
1100 Atlantic Street
Enter from west off of Mont Eagle Street

July 16th – Wixom

9:00 am – 2:00 pm
Wixom DPW
2041 Charms Road

October 1st – Novi

9:00 am – 2:00 pm
Novi DPW
26300 Lee BeGole Drive

October 29th – Southfield

9:00 am – 2:00 pm
RRRASOC MRF – Truck Entrance
20875 Mapleridge Avenue

Open to residents of RRRASOC member communities only

E-waste is accepted at HHW collections
Paper shredding available - Limit 3 boxes/100 lbs.

Questions? Call RRRASOC 248-208-2270

Sign Up for Event Notification & News at
www.rrrasoc.org

NOT ACCEPTED at HHW Events:

- ✗ Latex Paint ✗ Commercial Waste ✗ Fire Extinguishers ✗ Tires
✗ Flares ✗ Ammunition ✗ Smoke Detectors ✗ Needles/Sharps