



City of Soda Springs Recreation

Soccer Referee Training

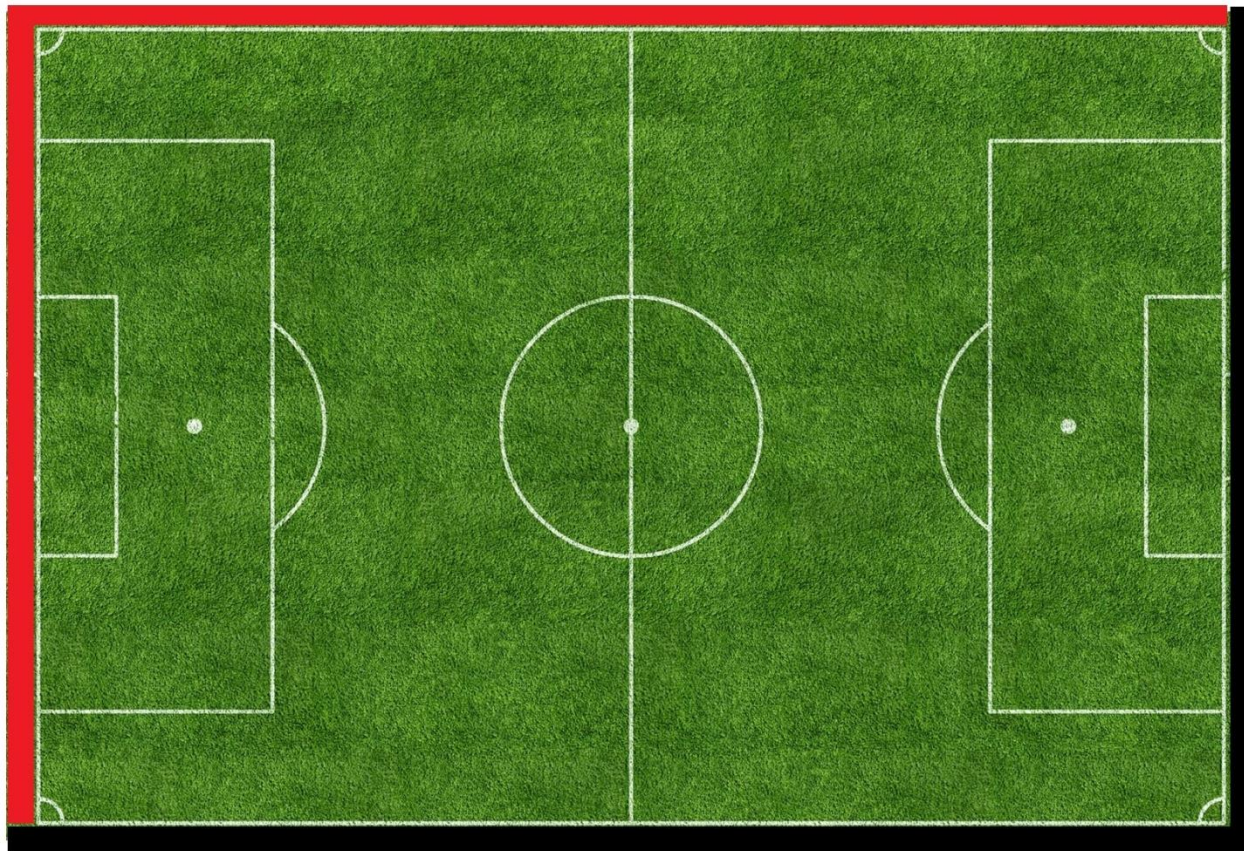
**This is for training purposes only!
Updated 7/31/18*

Two Referees

- The City of Soda Springs Recreation uses a “Dual Referee” system
- One referee will keep the official time
- Both referees will work as a team to ensure that rules are being followed
- Both referees will constantly be moving and adjusting their positions throughout the game

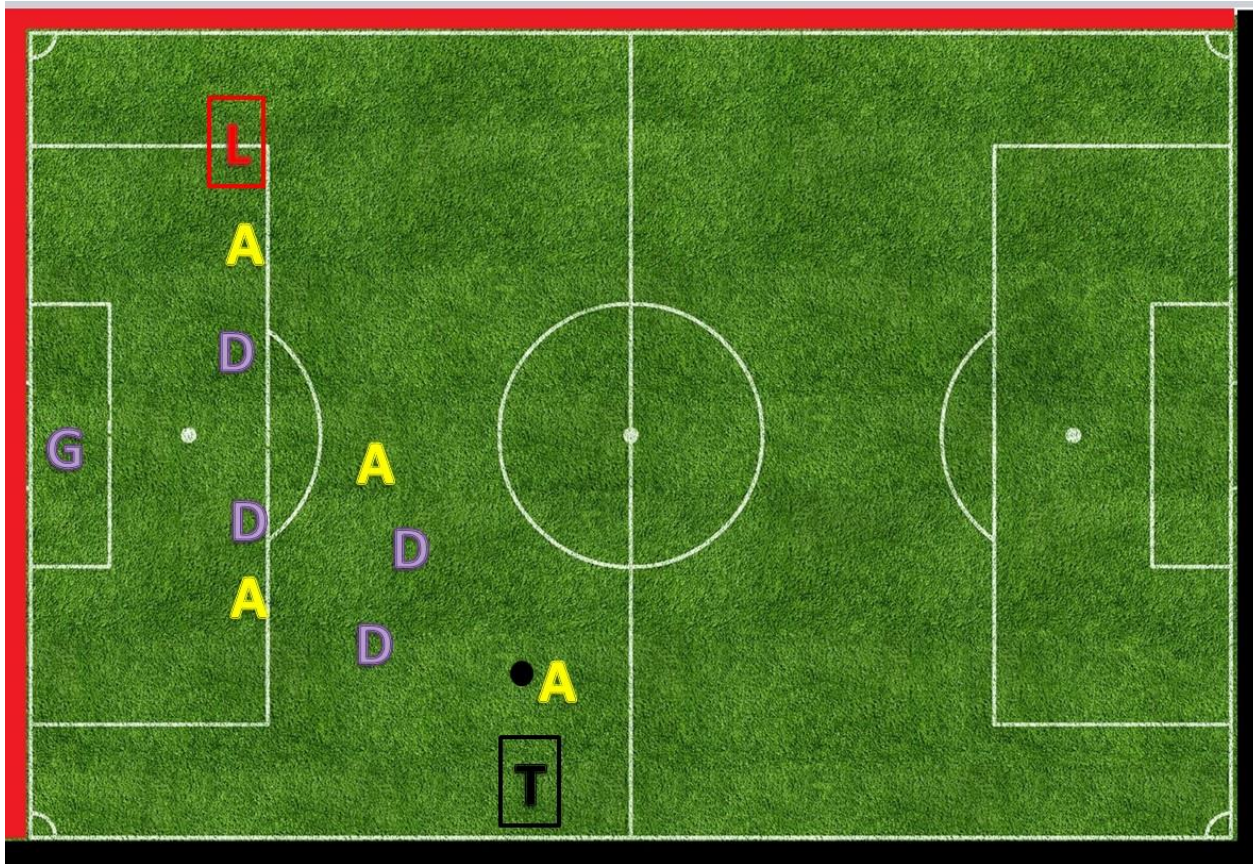
Out of Bounds Responsibility

Each referee will cover one sideline and one touchline.



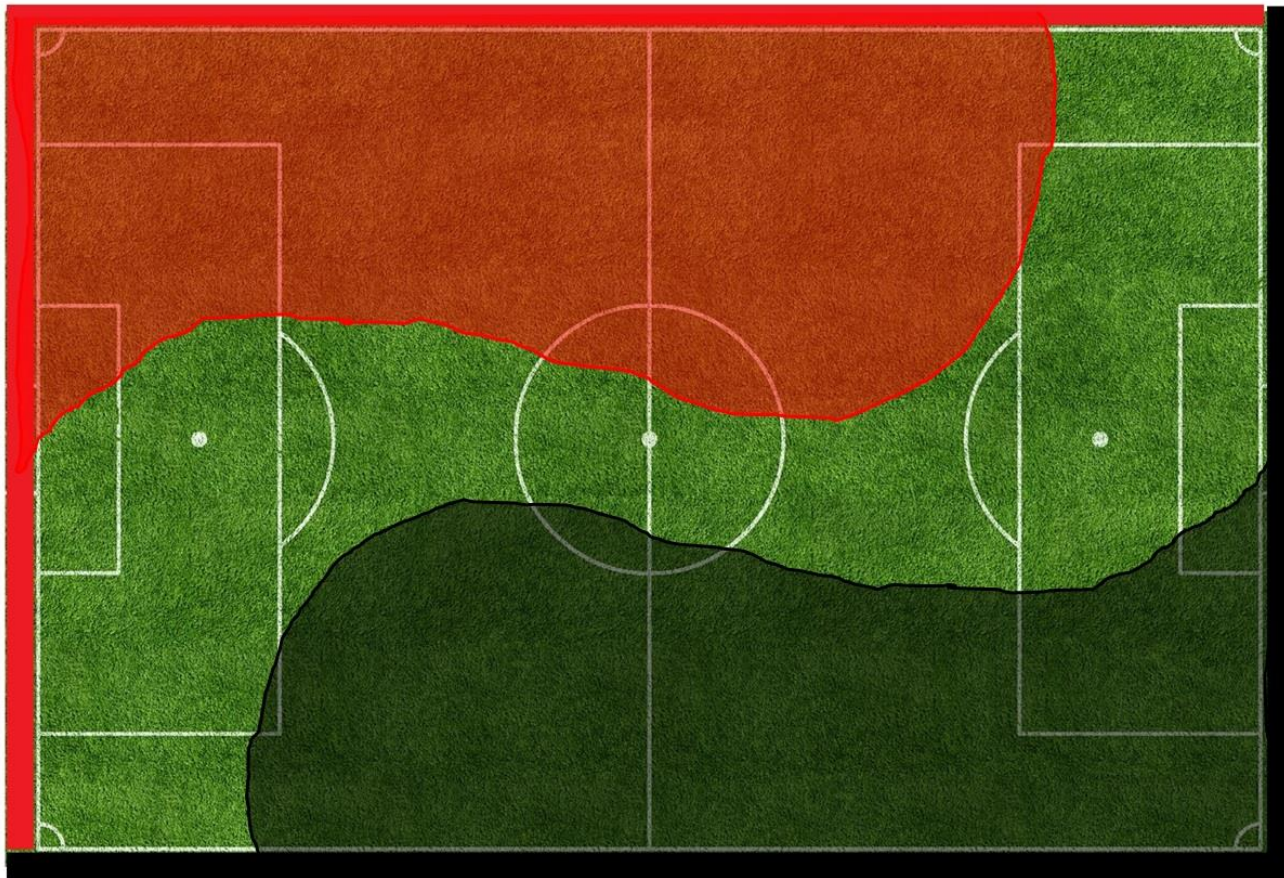
Adjust to the Play

Referees will move and run depending on where the play is.



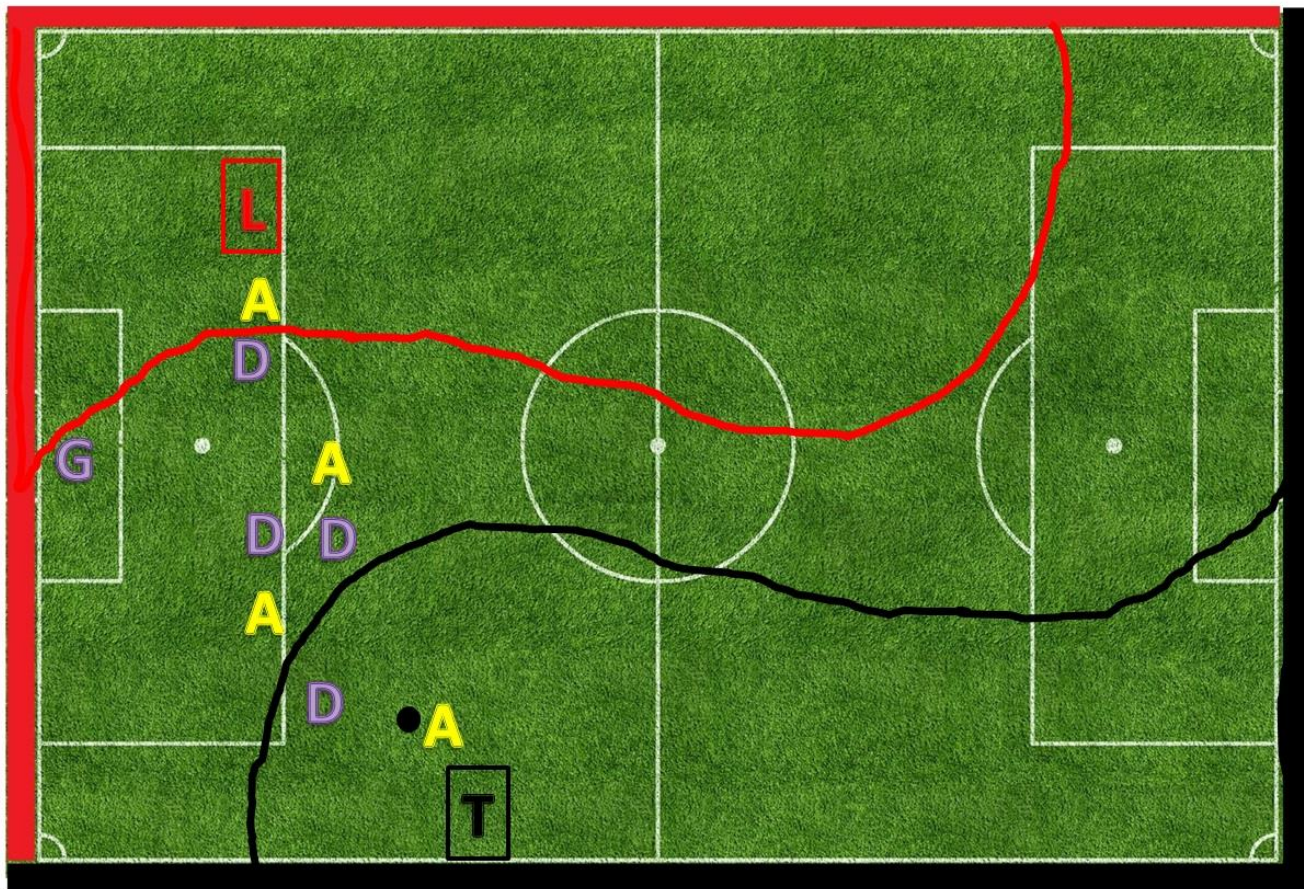
No Touchline Hugging

The shaded areas show the general area that each referee will be running, but referees need to be watching the whole field.



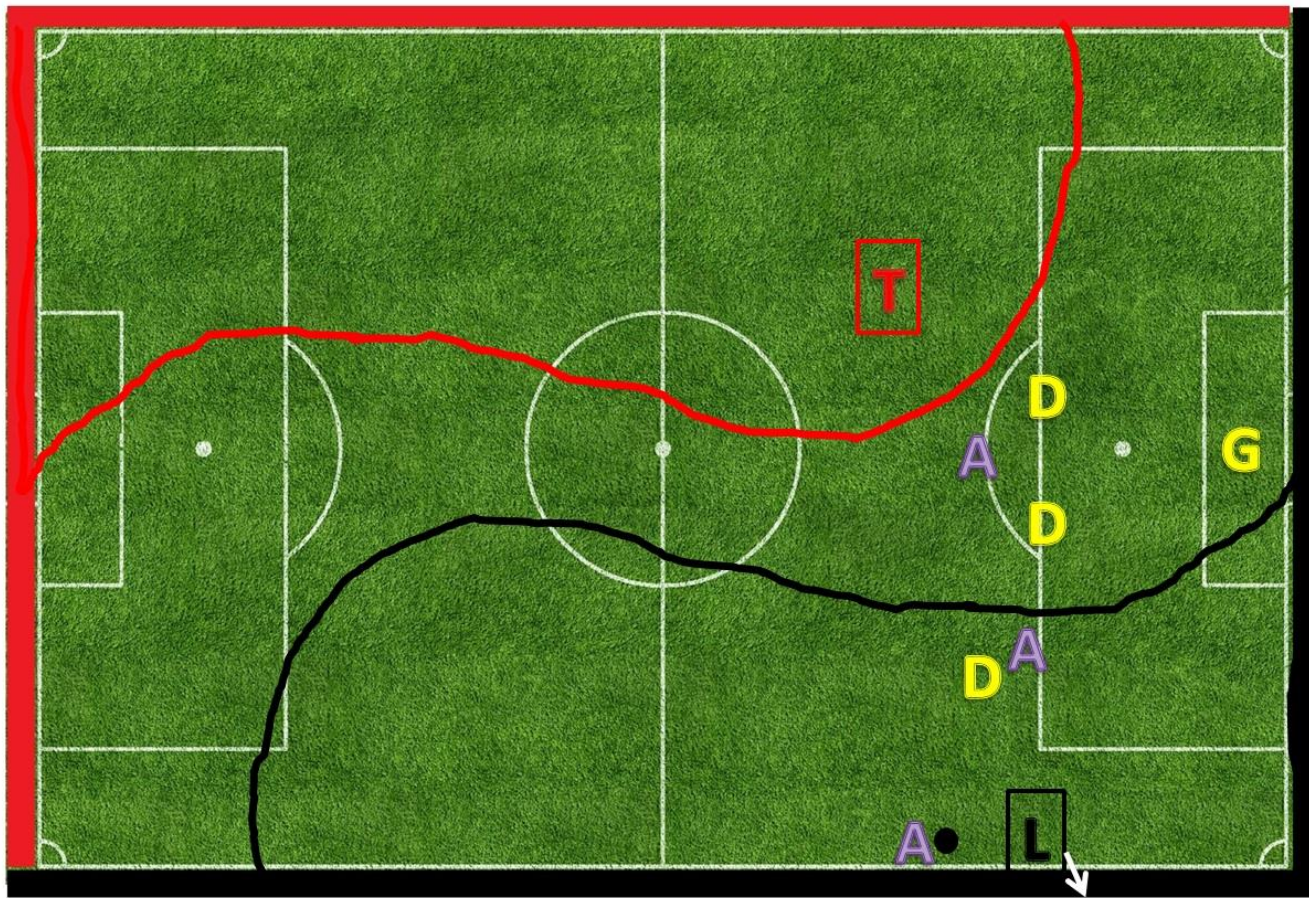
Coverage

The Lead (L) referee is unable to see the play near the ball; the Trailing (T) referee is near the play and will make calls accordingly.



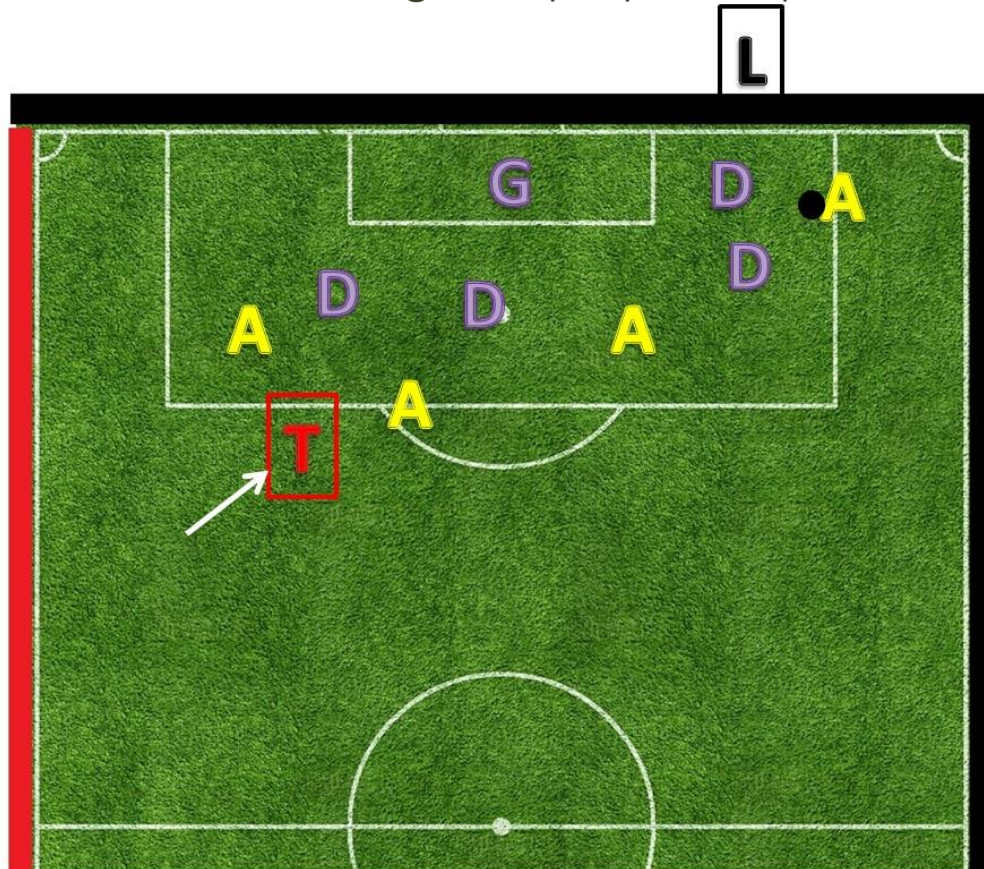
Running off the Field

If the play is headed near the referee, there is no problem with running off of the field to avoid getting in the middle of the gameplay.



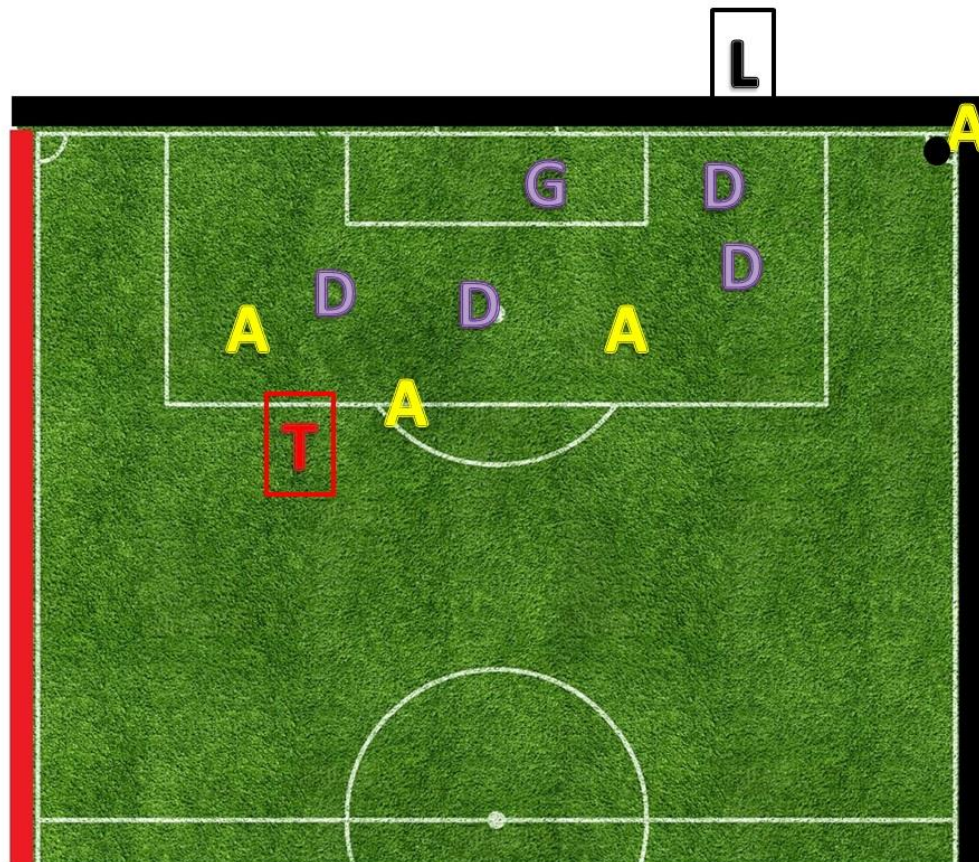
Coverage Near the Goal

There may be times when the Trailing (T) referee may need to get a little closer to the game play to help with coverage



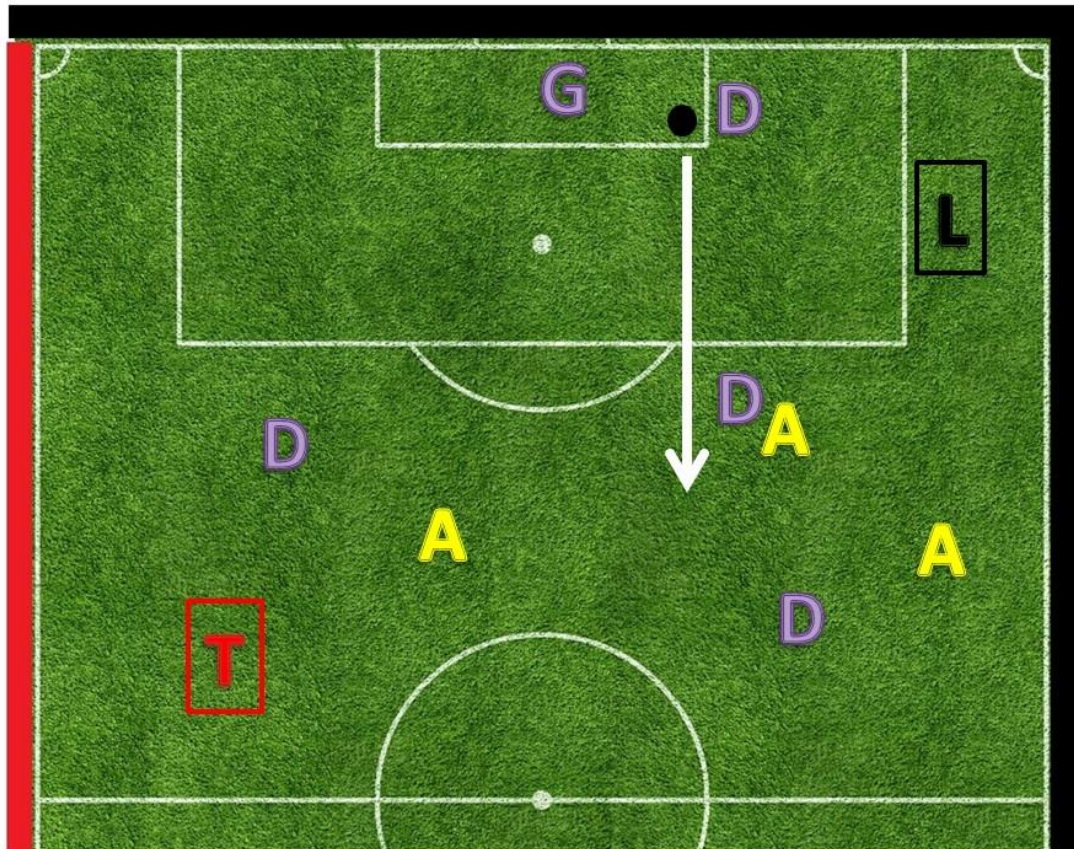
Corner Kick

Referee positioning during a Corner Kick.



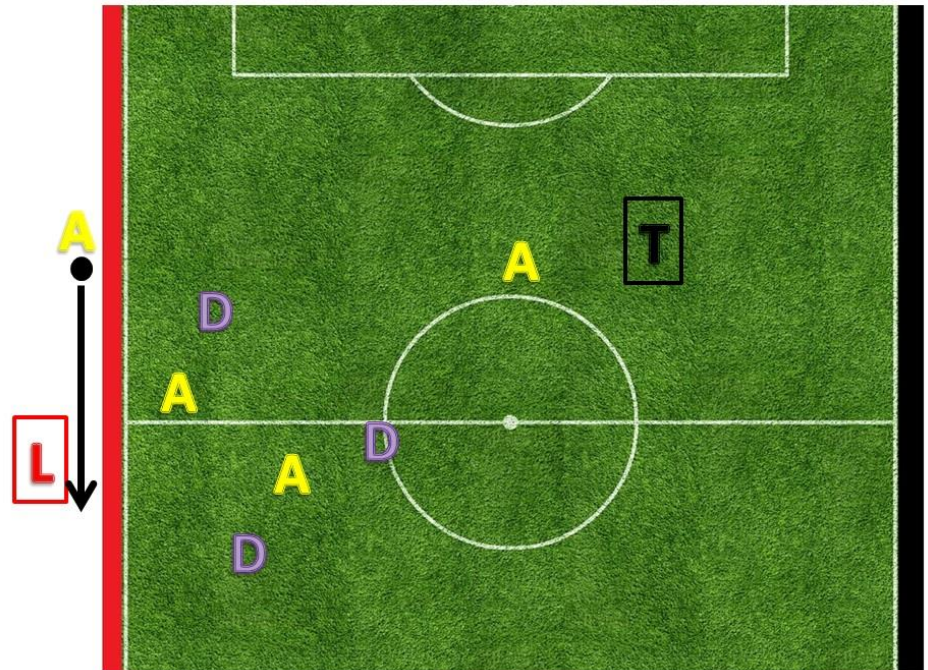
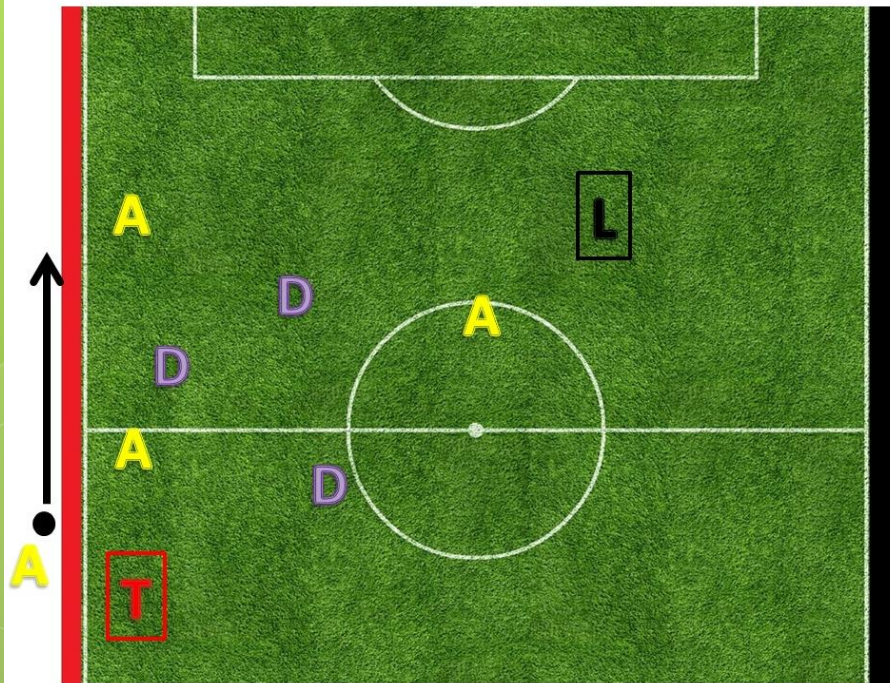
Goal Kick

Referee positioning during a Goal Kick



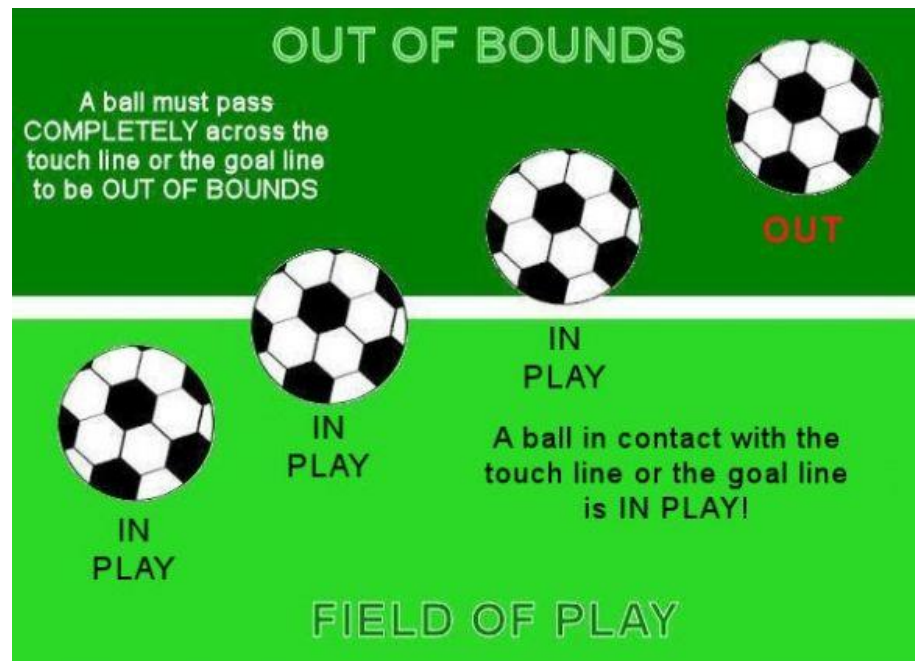
Throw In

Where you stand for a throw in is determined by the direction of the play.



What to Call

- Out of Bounds
 - Blow your whistle and signal in the direction that the ball will be going. For most groups, it is a good idea to call out the color of the team that gets the ball.



What to Call

- Goal
 - Blow your whistle and signal for a goal. In order to call a goal, the ball must cross completely over the line (similar to out of bounds); if it is not completely crossed, the goalie can still pick up the ball.
- Fouls
 - When a player trips, charges, pushes, or holds a player from the other team, a call needs to be made. *Keep in mind, that there will be some contact; do your best to keep the game under control.
 - https://www.youtube.com/watch?v=v8aw7ZbfR0&index=21&list=PLrN_i1X58Rkq5mS_p_EwjY1kRUg1Jqb-n&t=20s

What to Call

- Hand Ball

- The best question to ask is “did the hand hit the ball, or did the ball hit the hand”

- <https://www.youtube.com/watch?v=CUASGLxFPoY>

- Illegal Throw-Ins

- During the first week of games, stop the game, give the ball back to the same player, and explain a correct throw-in. Starting the second week, make the call and give the ball to the other team.

- <https://www.youtube.com/watch?v=qRcUEhgq0ew>

What to Call

- Offside

- This is one of the hardest rules to understand.
- 2nd-3rd grade group – be lenient and explain the rule. If you see a player taking advantage of being offside (after being warned), make the call.
- 4th-5th grade group – make the call. Explain why the call was made (they may not understand this rule), and award the other team an indirect free kick.
- <https://www.youtube.com/watch?v=FWHAnAKGk2c>

- Goal Keeper Interference and Infractions

- https://www.youtube.com/watch?v=6IzvEK_pRg&t=9s&list=PLrN_i1X58Rkq5mS_p_EwjY1kRUg1Jqb-n&index=12

Blow Your Whistle

If you are afraid of blowing a whistle, you may not be comfortable as a Soccer Referee.

Be confident and stick with your call!

DO NOT second guess yourself, you made the best call that you could!!

Just remember – you are learning! **Keep learning!!**

Signals

Signal along with each whistle blow

Soccer Referee Hand Signals

 <p>Caution or Expulsion Referee holds Yellow card Or Red card above head'</p>	 <p>Play On / Advantage Referee indicates with his hands That the Advantage Rule Applies and play should continue</p>	 <p>Direct Free Kick Referee points in The direction of kick</p>	 <p>Indirect Free Kick Referee raises his hand Until ball is kicked And Touched by another player</p>	 <p>Goal Kick Referee points to a corner Of goal area from Which kick is to be taken</p>	 <p>Corner Kick Referee points towards corner Of the field from which Kick is to be taken</p>	 <p>Goal Kick Assistant Referee Points his flag at goal area From which kick Is to be taken</p>
 <p>Penalty Kick Referee points To penalty mark From which kick Is to be taken</p>	 <p>Substitution Assistant Referee Signals to the referee By holding his flag Overhead with both hands</p>	 <p>Throw-In Assistant Referee Holds The flag out To his side, Pointing in the direction The throw is To be taken</p>	 <p>Corner Kick Assistant Referee Points his flag At corner area From which kick Is to be taken</p>	 <p>Offside Assistant Referee Points his flag straight up Above his head To signal offside Violation to the referee</p>	 <p>Offside Location</p>	<p>After Assistant Referee Signals offside, He then shows location of infraction By holding his flag out In front of him -- flag held high Indicates infraction occurred At far side of the field, Middle = center of field, Low = side of field nearest to him</p>