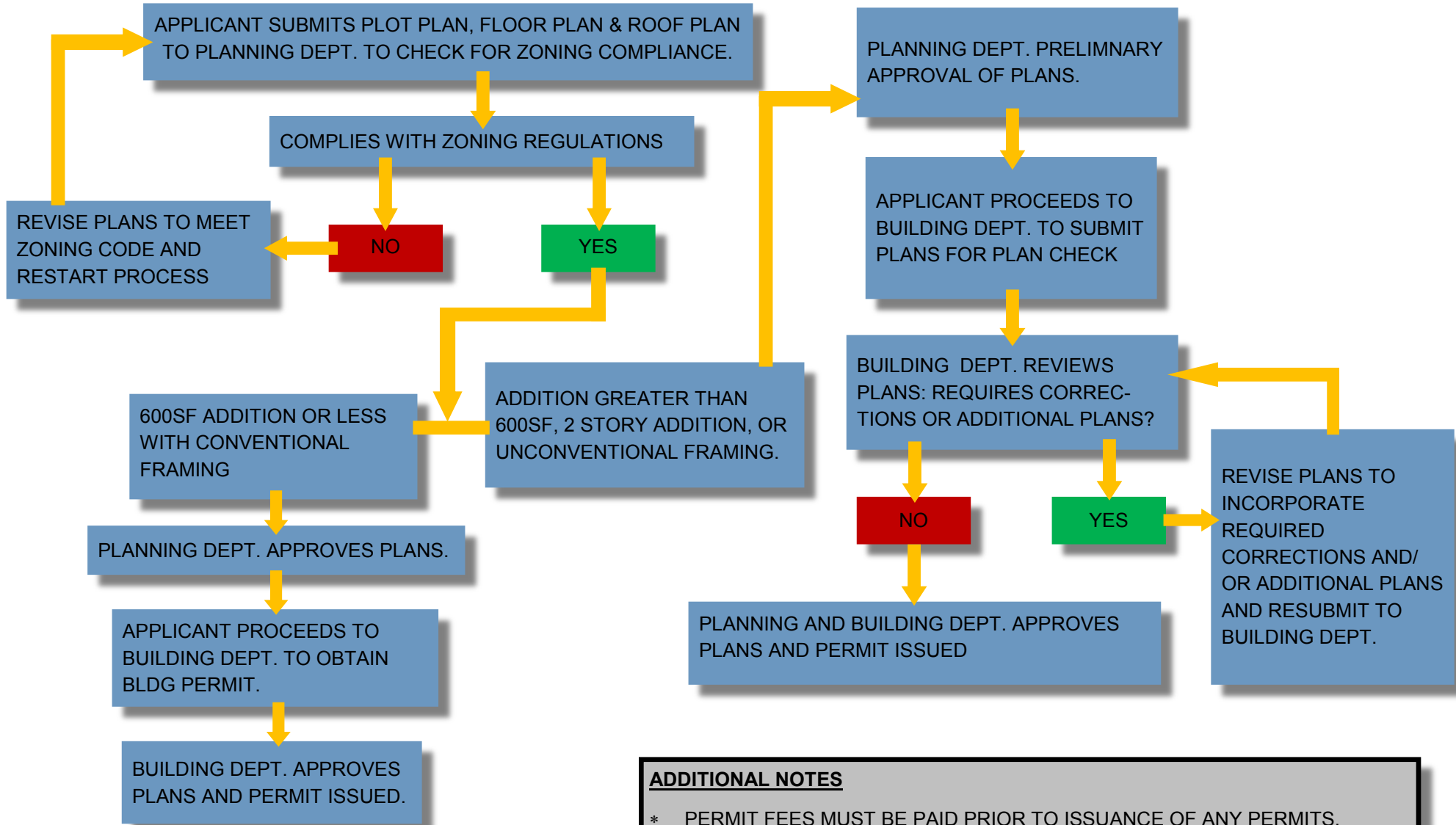


Building Permit Process



ADDITIONAL NOTES

- * PERMIT FEES MUST BE PAID PRIOR TO ISSUANCE OF ANY PERMITS.
- * NO CONSTRUCTION MAY OCCUR UNTIL PERMITS ARE ISSUED.
- * SCHOOL FEES ARE ASSESSED FOR ANY ADDITION GREATER THAN 500SF.
- * INSPECTION REQUESTS MUST BE MADE-24 HOURS IN ADVANCE.
- * PROJECT IS NOT COMPLETE UNTIL IT PASSES FINAL INSPECTION.

