

Backflow Preventer Guidelines

Due to their adverse visual impact on the appearance of new buildings and landscape areas, the use of a backflow preventer similar to the one shown below is not permitted in the City of Santa Fe Springs.



The City requires the use of "compact" or "n" shaped backflow devices, similar to the ones shown below.

Currently approved compact models include:



Febco Model 876 Master Series

Wilkins Model 450 DA

Apollo DC 4AN

Other compact models may be approved by the City's Planning and Public Works Departments.

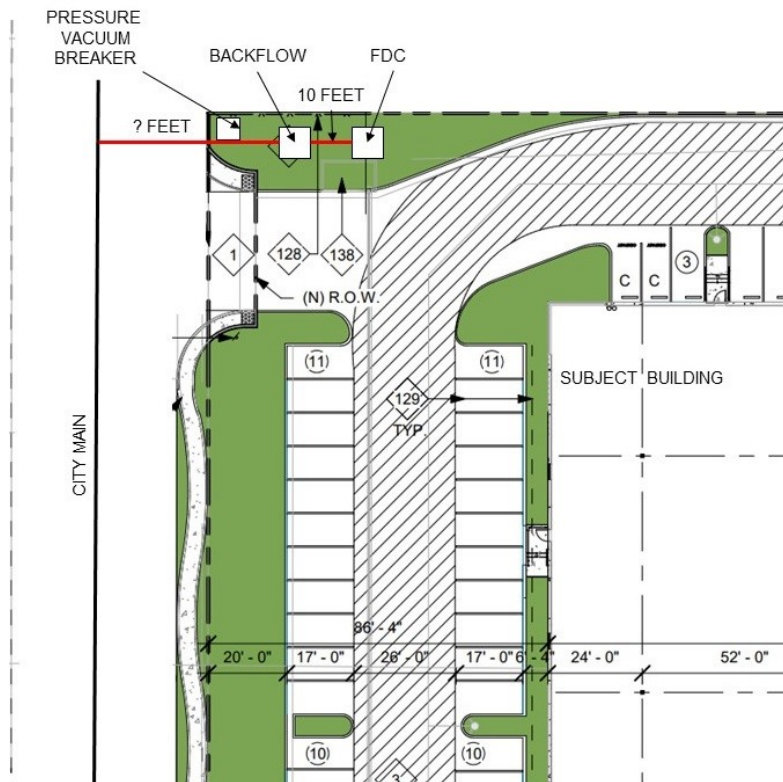
The following requirements shall also apply:

- Backflow devices shall be located along the side property line and as far back from the street as practical, or as required by the Planning Department.
- Backflow devices shall not be located in front of the main office area.
- Backflow devices shall be located within a landscaped area, painted a forest green color, and screened by approved landscape materials.
- Backflow devices shall be located a minimum 10' from the Fire Department Connection (FDC). Due to required screening, FDC may not be attached to the double detector check valve.
- Valves shut off shall be a maximum 24" above the ground (finish grade to bottom of wheel).
- Approval for installation of the backflow device is required by the City's Planning, Public Works, and Fire Departments. Five copies of the Underground Fire Sprinkler plans are required for approval. Obtain approvals from Planning and Public Works prior to Fire Department review.

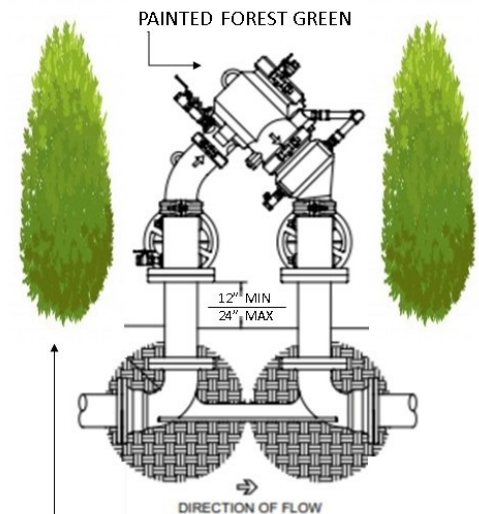
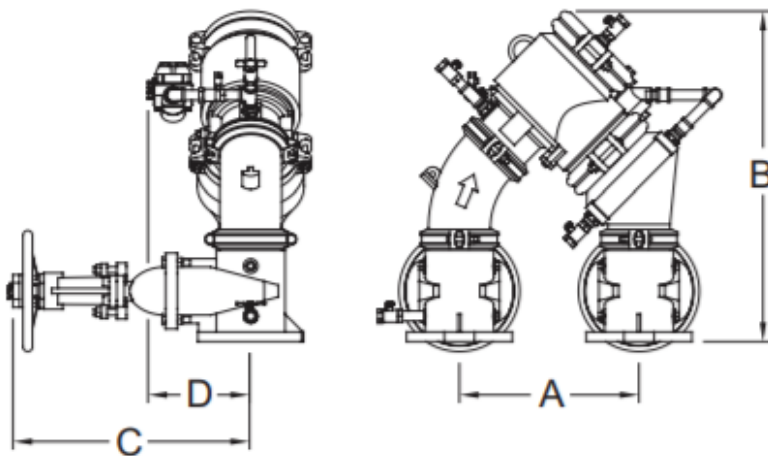
Materials Required:

- Site Plan.
- Device specifications and dimensions.

Site Plan Requirements:



Specifications & Dimensions:



LANDSCAPE SCREENING
AS APPROVED IN LANDSCAPING PLAN

Enclosures & Screening:



The required backflow enclosure shall meet the specifications provided by the Public Works Department.



Recommended shrubs for screening:

- | | | |
|------------------------------|---------------------|----------------------------|
| • African Boxwood | • Firethorn | • Evergreen Fountain Grass |
| • Common Boxwood | • Abelia | • Mexican Sage |
| • Japanese Boxwood | • Bougainvillea | • Texas Privet |
| • New Zealand Tea Tree Hedge | • Tropical Hibiscus | • Ixora Hedge |