



# CITY OF SANTA FE SPRINGS



## PARKS & FACILITIES BROCHURE



*Visit [www.santafesprings.org](http://www.santafesprings.org) for more details.*



# TABLE OF CONTENTS

## PARKS & COVERED PICNIC AREAS

• Lakeview.....	4
• Los Nietos.....	5
• Santa Fe Springs.....	6
• Little Lake.....	7
• Reserving a Park.....	8

## FACILITIES & MEETING ROOMS

### TOWN CENTER HALL

• Meeting Rooms.....	10
• The Club.....	11
• Social Hall.....	12
• Reserving Town Center Hall.....	13

### BETTY WILSON CENTER

• Main Hall.....	15
• Reserving Betty Wilson Center.....	16

### GUS VELASCO NEIGHBORHOOD CENTER

• Meeting Rooms.....	18
• Ontiveros Room.....	19
• Pio Pico Room.....	20
• Reserving Gus Velasco Neighborhood Center.....	21

### CITY LIBRARY

• Community Room.....	23
• Cesar Chavez Reading Garden.....	24
• Reserving the City Library.....	25

### HERITAGE PARK

• Picnic at Heritage.....	27
• Train Caboose.....	28
• Meeting Rooms.....	29
• Reserving Heritage Park.....	30

### CLARKE ESTATE

• Indoor Rooms.....	32
• Outdoor Spaces.....	33
• Reserving Clarke Estate.....	34

FACILITY MAP.....	35
-------------------	----



---

---

# PARKS

---

---

*Whether it be for a family  
gathering, special engagement,  
or a corporate event, our parks  
offer a wide variety of amenities,  
including picnic shelters,  
playgrounds, sports equipment,  
and much more.*







# LAKEVIEW PARK

10225 S. Jersey Ave., Santa Fe Springs, CA 90670 | Phone: (562) 864-5661

## Hours of Operation

Mon.-Fri., 3 p.m. - 5 p.m. • Sat.-Sun., 12 p.m. - 5 p.m.

*\*Hours are subject to seasonal change.*

## AMENITIES

Baseball Fields  
Outdoor Basketball Court  
Outdoor Restrooms  
Children's Playground  
Covered Picnic Shelter with  
Barbecue Grills  
Wading Pool (Summer only)  
Handball Courts  
Picnic Areas  
Barbecue Grills  
Playing Field  
Park & Sport Equipment  
Homework Club

## PARK INFO

Lakeview Park is a picturesque destination, gated within Lakeview Elementary School. This park boasts a large playing field, playgrounds, and a formal picnic area, making it a popular venue for birthday parties, baby showers, and family gatherings. This park also offers a Homework Club, free to the public, and available during the school year Monday-Friday from 3:30 p.m.-4:30 p.m. No registration necessary.

## RENTAL RATES

Capacity	Deposit	Resident	Non Resident
50 People	\$50	\$58	\$65

Available to rent Saturday or Sunday from 12 p.m.-5 p.m.  
A fee of \$30 will be charged for each additional hour.

*\*Rates subject to change.*

*Call (562) 863-4896 for reservation inquiries.*







# LOS NIETOS PARK

11143 Charlesworth Rd., Santa Fe Springs, CA 90670 | Phone: (562) 948-3621

## Hours of Operation

Mon.-Thu., 3 p.m. - 8 p.m. • Friday, 3 p.m. - 5 p.m. • Sat.-Sun., 12 p.m. - 5 p.m.

*\*Hours are subject to seasonal change.*

## AMENITIES

Baseball Fields  
Outdoor/Lighted Basketball Court  
Outdoor/Lighted Tennis Court  
Outdoor Restrooms  
Children's Playground  
Covered Picnic Shelter with Barbecue Grills  
Wading Pool (Summer only)  
Handball Courts  
Horseshoe Pit  
Picnic Areas  
Barbecue Grills  
Playing Fields  
Park & Sport Equipment  
Homework Club

## PARK INFO

Los Nietos Park is one of the City's larger parks with baseball fields, a large covered picnic area, and a variety of sport oriented amenities that is sure to keep you busy throughout the day. The large variety of activities available at Los Nietos Park are ideal for school party reservations, company picnics, or family reunions. This park also offers a Homework Club, free to the public, and available during the school year Monday-Friday from 3:30 p.m. - 4:30 p.m. No registration necessary.

## RENTAL RATES

Capacity	Deposit	Resident	Non Resident	SFS Business
200	\$100	\$194	\$210	\$235

Available to rent Saturday or Sunday from 12 p.m.-5 p.m.  
A fee of \$30 will be charged for each additional hour.

*\*Rates subject to change.*

Call (562) 863-4896 for reservation inquiries.







# SANTA FE SPRINGS PARK

10068 Cedardale Dr., Santa Fe Springs, CA 90670 | Phone: (562) 863-9007

## Hours of Operation

Mon.-Fri., 3 p.m. - 5 p.m. • Sat.-Sun., 12 p.m. - 5 p.m.

*\*Hours are subject to seasonal change.*

## AMENITIES

Outdoor Basketball Court  
Outdoor Restrooms  
Children's Playground  
Covered Picnic Shelter with  
Barbecue Grills  
Wading Pool (Summer only)  
Handball Courts  
Horseshoe Pit  
Picnic Areas  
Barbecue Grills  
Playing Field  
Park & Sport Equipment  
Homework Club

## PARK INFO

Santa Fe Springs Park, located in the heart of the residential community, offers a more secluded atmosphere with horseshoe pits, basketball courts, and formal picnic area fit for large groups. This park also offers a Homework Club, free to the public, and available during the school year Monday-Friday from 3:30 p.m.-4:30 p.m. No registration necessary.

## RENTAL RATES

Capacity	Deposit	Resident	Non Resident	SFS Business
200	\$100	\$194	\$210	\$235

Available to rent Saturday or Sunday from 12 p.m.-5 p.m.  
A fee of \$30 will be charged for each additional hour.

*\*Rates subject to change.*

*Call (562) 863-4896 for reservation inquiries.*







# LITTLE LAKE PARK

10900 Pioneer Blvd., Santa Fe Springs, CA 90670 | Phone: (562) 941-9585

## Hours of Operation

Mon.-Thu., 3 p.m. - 8 p.m. • Friday, 3 p.m. - 5 p.m. • Sat.-Sun., 12 p.m. - 5 p.m.

*\*Hours are subject to seasonal change.*

### PAVILION - 7 Picnic Tables

Capacity	Deposit	*Fee
1-75 People	\$100	\$89

### MEETING ROOM & PATIO

Capacity	Deposit	*Fee
1-64 People	\$100	\$130

Includes 60-inch round tables and standard picnic tables.

\*A fee of \$30 will be charged for each additional hour.  
Available to rent Saturday or Sunday from 12:00 p.m. - 5:00 p.m.

*\*Rates subject to change.*

## PARK INFO

Little Lake Park has 4 baseball fields, 3 covered picnic areas, and a variety of sport oriented amenities that is sure to keep you busy! In addition, the Hitting Zone batting cages on site is open year around. This park is perfect for school party reservations, company picnics, or family reunions. This park also offers a Homework Club, free to the public, and available during the school year Monday-Friday from 3:30 p.m. - 4:30 p.m. No registration necessary.

## AMENITIES

(4) Baseball Fields  
Outdoor/Lighted Basketball Courts  
Outdoor Restrooms  
Children's Playground  
Covered Picnic Shelter with Barbecue Grills  
Wading Pool (Summer only)  
Handball Courts

Horseshoe Pit  
Picnic Areas  
Barbecue Grills  
Playing Field  
Park & Sport Equipment  
Homework Club  
Hitting Zone Batting Cages

Call (562) 863-4896 for reservation inquiries.





# RESERVING A PARK

## RESERVATION PROCESS

---

- Applicant must visit Town Center Hall at 11740 E. Telegraph Rd., Santa Fe Springs, CA 90670, to fill out and submit an application.
- Applications may be submitted one year prior to scheduled event and not less than 30 days of event.
- The deposit is due at the time of submitting your application. Deposits may be made with a credit card, cash, or a check made payable to the *City of Santa Fe Springs*.
- A date cannot be held without an application and deposit.
- The event balance is due 30 days prior to the event. If the facility is rented less than 30 days prior to the event, fees are due two weeks before the event; at that time, payment must be made with cash or debit/credit card.
- Moonbounce jumpers are permitted at all parks.
- No park may be rented prior to 9 a.m. or after dusk.

## LITTLE LAKE PARK MEETING ROOM

---

When reserving the Little Lake Park Meeting Room, permits are scheduled for five hours (12:00 p.m. - 5:00 p.m.) and not to exceed six hours max. Permits may not go past 8:00 p.m. Each permit will be allocated one hour for prep time and 1/2 hour for clean up.

## TOWN CENTER HALL OFFICE HOURS

---

- Monday - Thursday | 9 a.m. - 8 p.m.
- Friday | 9 a.m. - 5 p.m.
- Saturday & Sunday | Office Closed

For questions, please call the  
Parks and Recreation Services Division at (562) 863-4896.



---

# TOWN CENTER HALL

---

*This facility acts as the City's premier rental space with meeting rooms, a grand hall, and a teen lounge which includes arcade games, pool tables, and much more.*







Meeting Room 1



Meeting Room 2

# MEETING ROOMS

11740 E. Telegraph Rd., Santa Fe Springs, CA 90670 | (562) 863-4896

## MORE INFO

Town Center Hall offers two meeting rooms which can be a great fit for your next business meeting, presentation, or professional seminar.

For reservation inquiries, please call our office at (562) 863-4896.

## AVAILABLE TO RENT

Monday-Thursday | 9 a.m. - 8 p.m.

Friday | 9 a.m. - 5 p.m.

- Fees are charged at a flat rate.
- A \$30/hour staff fee will be applied when reserving outside business hours.
- Meeting Room set-up comes as is.

## AMENITIES

Audio Visual

Projector

Laptop

Whiteboard

Conference Tables

Chairs

Coffee Maker

Sink

### MEETING ROOM 1

Deposit	Monday-Friday	Capacity
\$50	\$105	40

### MEETING ROOM 2

Deposit	Monday-Friday	Capacity
\$50	\$52	12

*\*Rates subject to change.*



Meeting Room 2



Meeting Room 1





# THE CLUB

11740 E. Telegraph Rd., Santa Fe Springs, CA 90670 | (562) 409-7649

## MORE INFO

Here at the Teen Lounge, we have a little bit of everything for everyone to enjoy. From arcade games to pool tables, this is the perfect space for your next special occasion or birthday party, where your guests are sure to have a great time.

For reservation inquiries, please call our office at (562) 863-4896.

## AVAILABLE TO RENT

Saturday & Sunday | Between 12 p.m. - 5 p.m.

- Available on Saturdays and Sundays only.
- Party must take place between 12 p.m. - 5 p.m.
- No alcohol permitted in venue.

## AMENITIES

- Capacity - 100
- 42-Inch Round Tables
- 6-Foot Rectangular Tables
- Chairs
- Sofas
- Pool Tables
- Ping Pong Tables
- Air Hockey Table
- Foosball Table
- Large screen T.V. - 2
- Arcade Games
- Play Station IV - 2
- X-Box I
- Wii U- 2

## RENTAL RATES

	Deposit	Resident	Non Resident
Special Occasion	\$200	\$260	\$300
Includes 4 hours of event time, with an additional 1 hour for set-up and 1 hour for clean-up.			

*\*Rates subject to change.*







# SOCIAL HALL

11740 E. Telegraph Rd., Santa Fe Springs, CA 90670 | (562) 863-4896

## MORE INFO

As the largest reservation space in the city, the Social Hall is the ideal location for any large scale special events, reunions, birthdays, and more.

For reservation inquiries, please call our office at (562) 863-4896.

## HOURS OF OPERATION

Monday - Thursday | 9:00 a.m. - 8:00 p.m.

Friday | 9:00 a.m. - 5:00 p.m.

## AMENITIES

Size - 3,456 Sq Ft

Capacity - 300 Assembly

Capacity - 245 Banquet

Capacity - 200 Dinner & Dance

60-Inch Round Tables

8-Foot Rectangular Tables

6-Foot Rectangular Tables

Chairs

Full Prep Kitchen

Audio Visual System

Pull Down Screen

## RENTAL RATES

	Deposit	Saturday Fee	Friday/Sunday Fee	Security Fee
Special Occasion	\$750	*Resident: \$1,035 *Non Resident: \$1,315	*Resident: \$933 *Non Resident: \$1,115	\$160
Funeral	\$500	Monday-Friday: \$120 Flat Rate (4 hrs. max) **Saturday-Sunday: \$120 + \$30/hour		
Business	\$100	**Monday-Friday Flat Rate of \$305		N/A

\*Fee is a flat rate for 6 hours of event time.

\*\*A \$30/hour staff fee will be charged when reservation is outside regular business hours.

\*Rates subject to change.





# RESERVING TOWN CENTER HALL

---

## RESERVATION PROCESS

---

- Applicant must visit Town Center Hall at 11740 E. Telegraph Rd., Santa Fe Springs, CA 90670, to fill out and submit an application.
- Applications may be submitted one year prior to scheduled event and not less than 30 days of event.
- The deposit is due at the time of submitting your application. Deposits may be made with a credit card, cash, or a check made payable to the *City of Santa Fe Springs*.
- A date cannot be held without an application and deposit.
- The event balance is due 30 days prior to the event. If the facility is rented less than 30 days prior to the event, fees are due two weeks before the event; at that time, payment must be made with cash or debit/credit card.

## TOWN CENTER HALL OFFICE HOURS

---

- Monday - Thursday | 9:00 a.m. - 8:00 p.m.
- Friday | 9:00 a.m. - 5:00 p.m.
- Saturday & Sunday | Office Closed

For questions, please call the  
Parks and Recreation Services Division at (562) 863-4896.





---

# BETTY WILSON CENTER

---

*Named after one of Santa Fe  
Springs' original founding  
members, this facility offers a  
modest hall fit for special occasions  
and gatherings of all kind.*





# MAIN HALL

11641 Florence Ave., Santa Fe Springs, CA 90670 | (562) 863-4896

## MORE INFO

The Betty Wilson Center, located beside Lake Center Athletic Park, offers a distinct venue for banquets, baby showers, and other small special occasions.

For reservation inquiries, please call our office at (562) 863-4896.

## HOURS OF OPERATION

Monday - Friday | 8 a.m. - 6 p.m.

- No alcohol permitted in venue.

## AMENITIES

Capacity - 64 Dinner & Dance

Capacity - 96 Banquet

Capacity - 114 Assembly

60-Inch Round Tables

Chairs

Barbecue Grill

Microwave

Refrigerator

Sink

## RENTAL RATES

	Deposit	Saturday Fee	Friday/Sunday Fee
Special Occasion	\$750	\$622	\$570
Funeral	\$500	Monday-Friday: \$120 Flat Rate (4 hrs. max) **Saturday-Sunday: \$120 + \$30/hour	

\*Fee is a flat rate for 6 hours of event time.

\*\*A \$30/hour staff fee will be charged when reservation is outside regular business hours.

*\*Rates subject to change.*





# RESERVING BETTY WILSON CENTER

## RESERVATION PROCESS

---

- All applications for the Betty Wilson Center *must go through the Town Center Hall Office*. Applicant must visit Town Center Hall at 11740 E. Telegraph Rd., Santa Fe Springs, CA 90670, to fill out and submit an application.
- Applications may be submitted one year prior to scheduled event and not less than 30 days of event.
- The deposit is due at the time of submitting your application. Deposits may be made with a credit card, cash, or a check made payable to the *City of Santa Fe Springs*.
- A date cannot be held without an application and deposit.
- The event balance is due 30 days prior to the event. If the facility is rented less than 30 days prior to the event, fees are due two weeks before the event; at that time, payment must be made with cash or debit/credit card.

## TOWN CENTER HALL OFFICE HOURS

---

- Monday - Thursday | 9 a.m. - 8 p.m.
- Friday | 9 a.m. - 5 p.m.
- Saturday & Sunday | Office Closed

For questions, please call the  
Parks and Recreation Services Division at (562) 863-4896.



---

# GUS VELASCO NEIGHBORHOOD CENTER

---

*In addition to housing the  
William C. Gordon Learning  
Center and the Family & Human  
Services Division, this facility  
offers an array of meeting rooms  
and halls, perfect for your  
next business meeting or social  
gathering.*







Meeting Room 1

# MEETING ROOMS

9255 Pioneer Blvd., Santa Fe Springs. CA 90670 | (562) 692-0261

## MORE INFO

The Gus Velasco Neighborhood Center offers two meeting rooms which can be a great fit for your next business meeting, presentation, or professional seminar.

For reservation inquiries, please call our office at (562) 692-0261.

## AMENITIES

Conference Tables

Chairs

Audio Visual Equipment

## AVAILABLE TO RENT

Monday-Friday | 8 a.m. - 5 p.m.

- Fees are charged at a flat rate.
- An additional \$30/hour staff fee will be applied when reservations are outside business hours.

### MEETING ROOM 1

Deposit	Monday-Friday	Capacity
\$50	\$105	25

### MEETING ROOM 2

Deposit	Monday-Friday	Capacity
\$50	\$52	14

*\*Rates subject to change.*



Meeting Room 2



Meeting Room 1





# ONTIVEROS ROOM

9255 Pioneer Blvd., Santa Fe Springs, CA 90670 | (562) 692-0261

## MORE INFO

A popular venue for birthdays and special occasions, this banquet hall is perfect for all occasions.

For reservation inquiries, please call our office at (562) 692-0261.

## HOURS OF OPERATION

Monday-Friday | 8 a.m. - 5 p.m.

Saturday & Sunday | Closed

## AMENITIES

Capacity - 96 Dinner

Capacity - 72 Dinner & Dance

8-Foot Rectangular Tables

5-Foot Rectangular Tables

Chairs

Patio Area

Audio Visual Equipment

Microwave

Ice Machine

Refrigerator

Food Warmer

## RENTAL RATES

	Deposit	Saturday Fee	Friday/Sunday Fee	Security Fee
Special Occasion	\$750	\$622	\$570	\$160
Funeral	\$500	Monday-Friday: \$120 Flat Rate (4 hrs. max) *Saturday-Sunday: \$120 + \$30/hour		

Fee is a flat rate for 6 hours of event time.

\*A \$30/hour staff fee will be charged when reservation is outside regular business hours.

*\*Rates subject to change.*







# PIO PICO ROOM

9255 Pioneer Blvd., Santa Fe Springs, CA 90670 | (562) 692-0261

## MORE INFO

As the largest rental space at the Gus Velasco Neighborhood Center, the Pio Pico Room is a popular venue for birthdays, special occasions, and social events.

For reservation inquiries, please call our office at (562) 692-0261.

## HOURS OF OPERATION

Monday-Friday | 8 a.m. - 5 p.m.

Saturday & Sunday | Closed

## AMENITIES

Capacity - 158 Assembly

Capacity - 120 Dinner

Capacity - 112 Dinner & Dance

8-Foot Rectangular Tables

5-Foot Rectangular Tables

Chairs

Patio Area

Audio Visual Equipment

Full Prep Kitchen

## RENTAL RATES

	Deposit	Saturday Fee	Friday/Sunday Fee	Security Fee
Special Occasion	\$750	\$706	\$670	\$160
Funeral	\$500	Monday-Friday: \$120 Flat Rate (4 hrs. max) *Saturday-Sunday: \$120 + \$30/hour		
Fee is a flat rate for 6 hours of event time.				
*A \$30/hour staff fee will be charged when reservation is outside regular business hours.				

*\*Rates subject to change.*





# RESERVING GUS VELASCO NEIGHBORHOOD CENTER

---

## RESERVATION PROCESS

---

- Applicant must visit the Gus Velasco Neighborhood Center at 9255 Pioneer Blvd., Santa Fe Springs, CA 90670, to fill out and submit an application.
- Applications may be submitted one year prior to scheduled event and not less than 30 days of event.
- The deposit is due at the time of submitting your application. Deposits may be made with a credit card, cash, or a check made payable to the *City of Santa Fe Springs*.
- A date cannot be held without an application and deposit.
- The event balance is due 30 days prior to the event. If the facility is rented less than 30 days prior to the event, fees are due two weeks before the event; at that time, payment must be made with cash or debit/credit card.

## GUS VELASCO NEIGHBORHOOD CENTER OFFICE HOURS

---

- Monday - Friday | 8:00 a.m. - 5:00 p.m.
- Saturday & Sunday | Office Closed

For questions, please call the  
Gus Velasco Neighborhood Center office at (562) 692-0261.





---

---

# CITY LIBRARY

---

---

*With its vast collection of books and multi-media resources, the City's Library serves as a central hub for community development and family friendly events. It also boasts two rental spaces for business meetings and small scale occasions.*





# COMMUNITY ROOM

11700 E. Telegraph Rd., Santa Fe Springs, CA 90670 | (562) 868-7738

## MORE INFO

The Library's Community Room is a state-of-the-art meeting room, perfect for small business meetings, workshops, and more.

For reservation inquiries, please call our office at (562) 868-7738.

## AMENITIES

Capacity - 42 Assembly

Capacity - 24 Classroom

Conference Tables

Chairs

Projector Screen

Laptop Hookup

Audio

Video

Free Wifi

Podium

## AVAILABLE TO RESERVE

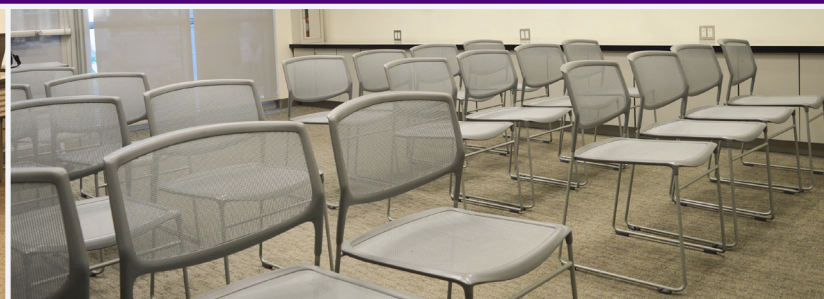
Monday - Saturday | Please inquire with library staff to determine available hours.



## RENTAL RATES

Deposit	Set-Up Fee	Fee Per Hour
\$50	\$30	\$75

*\*Rates subject to change.*







# CESAR E. CHAVEZ READING GARDEN

11700 E. Telegraph Rd., Santa Fe Springs, CA 90670 | (562) 868-7738

## MORE INFO

This beautiful space on the west side of the Library features drought tolerant plantings and a beautiful art wall. Perfect for small luncheons, picnics, and birthday parties.

For reservation inquiries, please call our office at (562) 868-7738.

## AVAILABLE TO RESERVE

Saturdays | Between 10 a.m. - 5 p.m.

- No alcohol permitted.
- Guests may bring additional tables and chairs.
- Hours are subject to seasonal change.

## RENTAL RATES

Deposit	Fee	Hours
\$50	\$150	4

*\*Rates subject to change.*

## AMENITIES

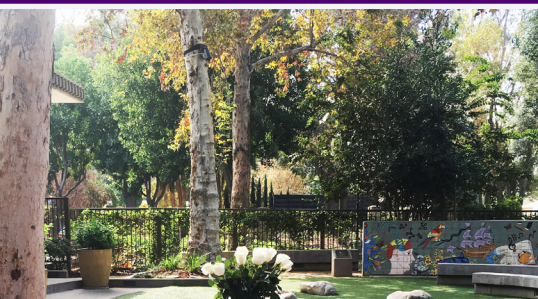
Capacity - 20

Seating - 12

44-Inch Round Tables

Chairs

Umbrellas





# RESERVING THE CITY LIBRARY

---

## RESERVATION PROCESS

---

- Applicant must visit the Santa Fe Springs City Library at 11700 Telegraph Rd., Santa Fe Springs, CA 90670, to fill out and submit an application.
- Applications may be submitted one year prior to scheduled event and not less than 30 days of event.
- The deposit is due at the time of submitting your application. Deposits may be made with a credit card, cash, or a check made payable to the *City of Santa Fe Springs*.
- A date cannot be held without an application and deposit.
- The event balance is due 30 days prior to the event. If the facility is rented less than 30 days prior to the event, fees are due two weeks before the event; at that time, payment must be made with cash or debit/credit card.

## CITY LIBRARY HOURS OF OPERATION

---

- Monday - Thursday | 10 a.m. - 8 p.m.
- Friday | 10 a.m. - 6 p.m.
- Saturday | 10 a.m. - 5 p.m.
- Sunday | Closed

For questions, please call the City Library at (562) 868-7738.





---

---

# HERITAGE PARK

---

---

*A historical landmark that's been  
a staple of Santa Fe Springs history  
since the late 1800's, Heritage  
Park features historical exhibits,  
walking trails, and an aviary. This  
captivating space is the perfect  
destination for your next event.*





# PICNIC AT HERITAGE

12100 Mora Dr., Santa Fe Springs, CA 90670 | (562) 946-6476

## MORE INFO

Lush and rustic, this picnic area is nestled on the west side of the park, near the ruins of what was once a large adobe home. With its serene atmosphere, and wide open spaces, this is an ideal location for your next family picnic, reunion, or special event.

For reservation inquiries, please call our office at (562) 946-6476.

## RENTAL RATES

Deposit	*Fee	Capacity
\$100	\$185	90
*Includes 6 hours of event time.		

*\*Rates subject to change.*

## AVAILABLE TO RESERVE

Availability dependent on the time of season:

November - April | Between 10 a.m. - 4 p.m.

May - October | Between 11 a.m. - 6 p.m.

- Reservation includes one additional hour of set up and one hour of clean up.

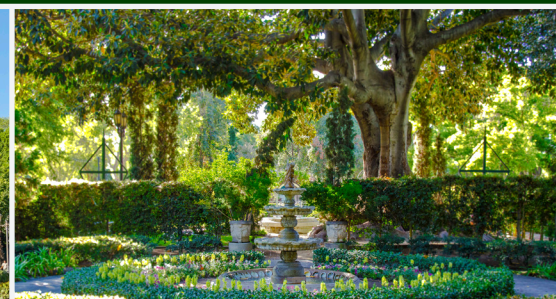
## AMENITIES

Picnic Tables

Umbrellas

Additional Food Tables

BBQ Pit Available







# TRAIN CABOOSE

12100 Mora Dr., Santa Fe Springs, CA 90670 | (562) 946-6476

## MORE INFO

Located at the entrance of the park stands a vintage A. T. & S. F. steam locomotive. This colorful railroad exhibit offers its guests an opportunity to enjoy their special day inside a restored train caboose. This space is ideal for small birthday parties, meetings, or special gatherings.

For reservation inquiries, please call our office at (562) 946-6476.

## AMENITIES

Max Capacity - 40

Caboose Capacity - 14 Adults or 16 Children

Railroad Picnic Area Capacity - 26

Additional Food Tables

Chairs

## AVAILABLE TO RESERVE

Monday-Sunday | 12 p.m. - 4 p.m.

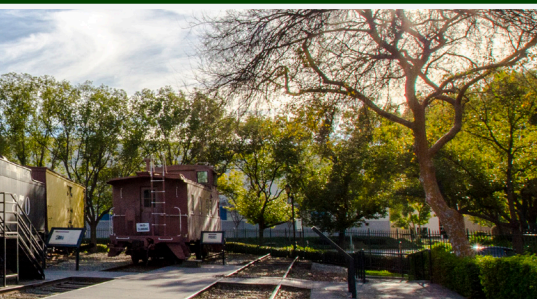
- Decorating Time | 11 a.m. - 12 p.m.
- Clean-up Time | 4 p.m. - 4 p.m.



## RENTAL RATES

Deposit	Fee	Hours
\$100	\$135	4

*\*Rates subject to change.*







# MEETING ROOMS

12100 Mora Dr., Santa Fe Springs, CA 90670 | (562) 946-6476

## MORE INFO

Heritage Park offers two novel meeting spaces in its Carriage Barn and Train Depot. These distinct rooms offer the perfect venue for your next business meeting, seminar, or workshop.

For reservation inquiries, please call our office at (562) 946-6476.

## AVAILABLE TO RESERVE

Availability dependent on the time of season:  
November-April | Between 9 a.m. - 6 p.m.  
May-October | Between 9 a.m. - 8 p.m.

## AMENITIES

Tables  
Chairs  
Projection Screen

## RENTAL RATES

	Deposit	Fee	Capacity
Train Depot	\$50	\$35 / Per Hour	18
Carriage Barn	\$50	\$35 / Per Hour	35

*\*Rates subject to change.*





# RESERVING HERITAGE PARK

---

## RESERVATION PROCESS

---

- Applicant must visit Heritage Park at 12100 Mora Dr., Santa Fe Springs, CA 90670, to fill out and submit an application.
- Applications may be submitted one year prior to scheduled event and not less than 30 days of event.
- The deposit is due at the time of submitting your application. Deposits may be made with a credit card, cash, or a check made payable to the *City of Santa Fe Springs*.
- A date cannot be held without an application and deposit.
- The event balance is due 30 days prior to the event. If the facility is rented less than 30 days prior to the event, fees are due two weeks before the event; at that time, payment must be made with cash or debit/credit card.

## HERITAGE PARK OFFICE HOURS

---

- Monday - Friday | 9 a.m. - 5 p.m..
- Saturday & Sunday | Closed

For questions, please call the Heritage Park office at (562) 946-6476.



---

# CLARKE ESTATE

---

*Completed in 1921, this 8,000 square-foot home was restored and modeled after Mediterranean and Mission Revival architecture. A favored destination for weddings and receptions, this venue also caters to business meetings and corporate events.*







# INDOOR ROOMS

10211 Pioneer Blvd., Santa Fe Springs, CA 90670 | (562) 946-6476

## MORE INFO

With minimal changes to its design since the buildings creation in 1921, the Clarke Estate serves as a timeless meeting space for workshops, small business groups, and corporate events.

For reservation inquiries, please call our office at (562) 946-6476.

## AVAILABLE TO RESERVE

Monday-Sunday | 9 a.m. - 8 p.m.

## AMENITIES

Tables

Chairs

Full Prep Kitchen

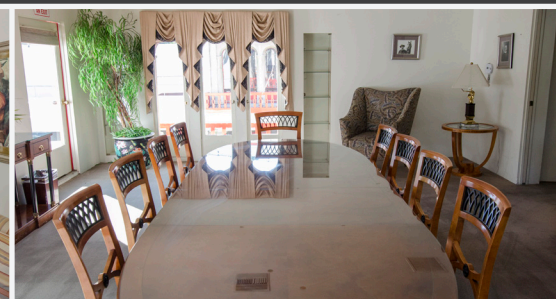
Projection Screen Available

## RENTAL RATES

	Deposit	First 4 Hours	Additional Hours	Capacity
Clarke Room	\$50	\$66 per hour	\$50 per hour	8
Rankin Room				10
Siemon Room				12
Living Room & Dining Room		\$76 per hour	\$60 per hour	30
Entire Building		\$107 per hour	\$91 per hour	30-*60

\*Max capacity is determined by the summation of individual room capacities.

\*Rates subject to change.







# OUTDOOR SPACES

10211 Pioneer Blvd., Santa Fe Springs, CA 90670 | (562) 946-6476

## MORE INFO

Surrounded by elegant fountains and beautiful gardens, the Clarke Estate offers a beautiful backdrop to any event, whether it be a business meeting, special occasion, or corporate gathering.

For reservation and rate inquiries, please call our office at (562) 946-6476.

## AVAILABLE TO RESERVE

Friday-Saturday | Between 9 a.m. - 12 a.m.

Sunday-Thursday | Between 9 a.m. - 10 p.m.

## AMENITIES

Tables

Chairs

Full Prep Kitchen





# RESERVING CLARKE ESTATE

---

## RESERVATION PROCESS

---

- All applications for the Clarke Estate *must go through the Heritage Park Office*. Applicant must visit Heritage Park at 12100 Mora Dr., Santa Fe Springs, CA 90670, to fill out and submit an application.
- Applications may be submitted one year prior to scheduled event and not less than 30 days of event.
- The deposit is due at the time of submitting your application. Deposits may be made with a credit card, cash, or a check made payable to the *City of Santa Fe Springs*.
- A date cannot be held without an application and deposit.
- The event balance is due 30 days prior to the event. If the facility is rented less than 30 days prior to the event, fees are due two weeks before the event; at that time, payment must be made with cash or debit/credit card.

## CLARKE ESTATE TOURS

---

The Clarke Estate offers free tours to the public every Tuesday & Friday, and the first Sunday of the month between 11 a.m. - 2 p.m.

## HERITAGE PARK OFFICE HOURS

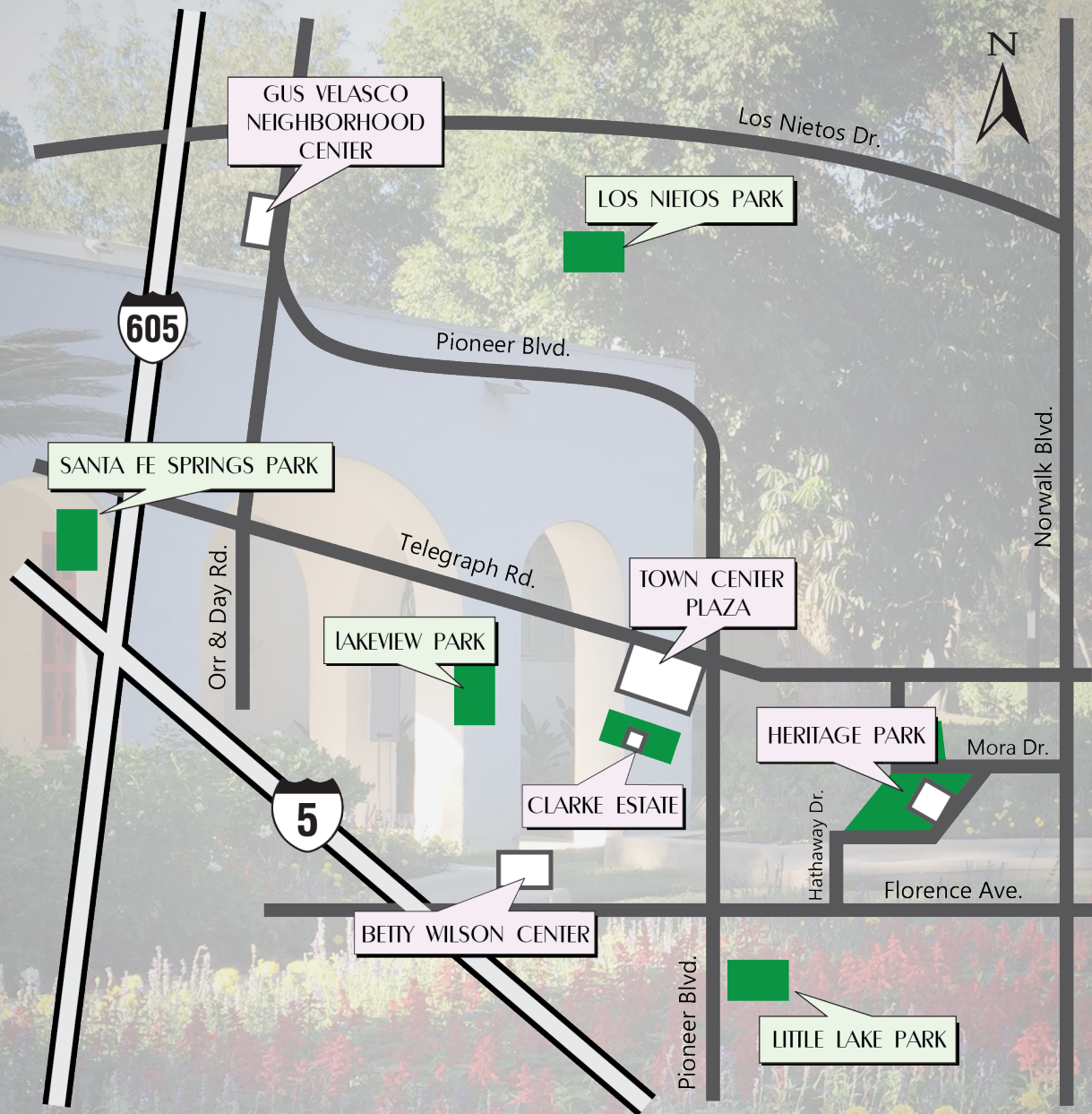
---

- All inquiries for the Clarke Estate must go through the Heritage Park Office.
- Monday - Friday | 9 a.m. - 5 p.m..
- Saturday & Sunday | Closed

For questions, please call the Heritage Park office at (562) 946-6476.



# VISIT SANTA FE SPRINGS



## DIRECTIONS TO SANTA FE SPRINGS

The City of Santa Fe Springs is ideally located between the City of Los Angeles and Orange County, and is easily accessible from any area in Southern California.

### *If driving from the North:*

- Take the I-5 South
- Enter into the 605 North
- Exit on Telegraph Rd. East

### *If driving from the South:*

- Take the I-5 North
- Enter into the 605 North
- Exit on Telegraph Rd. East



