



AGENDA

SPECIAL MEETING OF THE SANTA FE SPRINGS CITY COUNCIL AND PLANNING COMMISSION

**November 12, 2020
4:30 P.M.**

VIA TELECONFERENCE

City Council

***Annette Rodriguez, Councilmember
Juanita Trujillo, Councilmember
Joe Angel Zamora, Councilmember
John M. Mora, Mayor Pro Tem
William K. Rounds, Mayor***

Planning Commission

***Frank Ybarra, Chairperson
Ken Arnold, Vice Chairperson
Ralph Aranda, Commissioner
Gabriel Jimenez, Commissioner
Francis Carbajal, Commissioner***

******GOVERNOR'S EXECUTIVE ORDER N-29-20****
REGARDING CORONAVIRUS COVID-19**

On March 4, 2020, Governor Newsom proclaimed a State of Emergency to exist in California as a result of the threat of COVID-19. The Governor has issued Executive Orders that temporarily suspend requirements of the Brown Act, including allowing the City Council to hold public meetings via teleconferencing and to make public meetings accessible telephonically or otherwise electronically to all members of the public. Please be advised that, until further notice, City Council meetings will be held by teleconference. City Hall, including Council Chambers, is closed to the public.

You may attend the City Council meeting telephonically or electronically using the following means:

Electronically using Zoom: Go to Zoom.us and click on "Join A Meeting" or use the following

link: <https://zoom.us/j/521620472?pwd=U3cyK1RuKzY1ekVGZFdKQXNZVzh4Zz09>

Zoom Meeting ID: 521620472 Password: 659847

Telephonically: Dial: 888-475-4499 Meeting ID: 521620472

Public Participation: You may submit public comments in writing by sending them to the City Clerk at cityclerk@santafesprings.org. If you attend the meeting by telephone, you must submit a public comment in writing to be heard. To ensure that they are received for the meeting, please submit your written comments prior to 4:00 p.m. on the day of the City Council meeting. You may also contact the City Clerk's Office at (562) 868-0511 ext. 7314.

City of Santa Fe Springs
Special Meeting

November 12, 2020

1. CALL TO ORDER

2. ROLL CALL

Annette Rodriguez, Councilmember
Juanita Trujillo, Councilmember
Joe Angel Zamora, Councilmember
John M. Mora, Mayor Pro Tem
William K. Rounds, Mayor

Frank Ybarra, Chairperson
Ken Arnold, Vice Chairperson
Ralph Aranda, Commissioner
Gabriel Jimenez, Commissioner
Francis Carbajal, Commissioner

- 3. PUBLIC COMMENTS** *This is the time when comments may be made by citizens on matters under the jurisdiction of the City Council and Planning Commission, on the agenda and not on the agenda. Each citizen is limited to three (3) minutes.*

CITY COUNCIL & PLANNING COMMISSION

JOINT STUDY SESSION

- 4. General Plan Update Presentation**

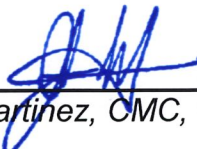
Recommendation:

- Receive presentation from the General Plan consultant and provide feedback on the General Plan draft Vision and Land Use Alternatives.

5. ADJOURNMENT

Americans with Disabilities Act: In compliance with the ADA, if you need special assistance to participate in a City meeting or other services offered by this City, please contact the City Clerk's Office. Notification of at least 48 hours prior to the meeting or time when services are needed will assist the City staff in assuring that reasonable arrangements can be made to provide accessibility to the meeting or service.

I, Janet Martinez, City Clerk for the City of Santa Fe Springs, do hereby certify under penalty of perjury under the laws of the State of California, that the foregoing agenda was posted at the following locations; city's website at www.santafesprings.org; and the Town Center Plaza (Kiosk), 11740 Telegraph Road, not less than 72 hours prior to the meeting.



Janet Martinez, OMC, City Clerk

November 5, 2020
Date Posted



City of Santa Fe Springs

Joint City Council & Planning Commission Study Session

ITEM NO. 4

November 12, 2020

STUDY SESSION

General Plan Update Presentation

RECOMMENDATION

- Receive presentation from the General Plan consultant and provide feedback on the General Plan draft Vision and Land Use Alternatives.

BACKGROUND

On February 13, 2020, the City Council awarded a contract to the consultant firm MIG to embark on the City's first comprehensive General Plan update since 1993. The General Plan represents the community's view of the future and serves as a blueprint for growth and development. The General Plan touches many topic areas, such as where housing can be built, where new commercial businesses are needed, how the road network can better accommodate cyclists and pedestrians, how parks can be improved, and how public safety is addressed in daily activities, including exposure of people to noise and air pollutants.

The 2-year-long General Plan update process is now well underway and community engagement has played a critical role. Thus far, MIG and City staff have:

- Created a dedicated General Plan Update website:
<https://reimaginesantafesprings.org/>
- Conducted twelve stakeholder interviews
- Assembled a General Plan Advisory Group and held four meetings
- Conducted a Community Survey
- Held two Virtual Community Workshops
- Created several social media posts

These various outreach efforts have assisted the General Plan Update team in drafting a General Plan vision and land use alternatives. Consultant MIG will present further details on the status of the General Plan Update, draft Vision, and land use alternatives.

A handwritten signature in black ink, appearing to read "Raymond R. Cruz".

Raymond R. Cruz
City Manager

Attachment:

Draft Vision Statement



RE-IMAGINE Santa Fe Springs 2040 General Plan VISION

October 2020 Draft



Santa Fe Springs: A strong, diverse, and balanced community where our businesses thrive, neighborhoods offer many housing choices, and residents enjoy ready access to parks, transit, local-serving shops, restaurants, and entertainment destinations.

Our well-maintained neighborhoods, distinguished schools, commitment to public safety, and outstanding community services create an exceptional quality of life.

Our families live in Santa Fe Springs for many generations, choosing to raise children in a community that respects and responds to cultural values.

With a strong industrial sector as an economic foundation, we remain committed to providing a welcoming environment for businesses that contribute to the local tax base, offer well-paying jobs for skilled labor, and responsibly manage their environmental impacts locally and regionally.

As an active, participatory community, we engage in local government, participate in community events, and celebrate family-oriented activities and social gatherings within vibrant public spaces.

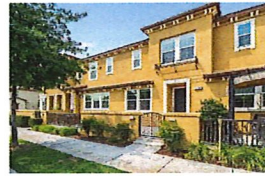
Our community is respectful and inclusive. Our governance values are to be accountable and transparent, while our leaders make decisions on behalf of the community with integrity, impartiality, and honesty.

Santa Fe Springs: An unparalleled place to enjoy life and to flourish as a community.



RE-IMAGINE Santa Fe Springs 2040 General Plan GUIDING PRINCIPLES

October 2020 Draft



Healthy and Safe Neighborhoods

Promote healthy and safe neighborhoods with comprehensive approaches that consider best practices around land use, mobility, housing, environmental justice, community services, and design.



Economic Strength and Local Businesses

Strengthen the City's industrial and office sectors while increasing and diversifying commercial businesses.



Downtown

We strive for a downtown that showcases our rich history, celebrates local entrepreneurship, features our civic institutions, and encourages downtown living within a vibrant gathering place for the community.



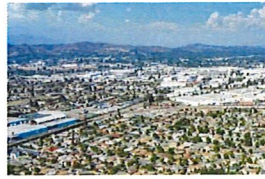
Active and Diverse Transportation

Create an interconnected, active transportation system that recognizes and responds to the critical needs of businesses to move commerce while accommodating the equally important necessity for pedestrians, cyclists, transit users, and motorists to move around the City with convenience and ease.



RE-IMAGINE Santa Fe Springs 2040 General Plan GUIDING PRINCIPLES

October 2020 Draft



Environmental Justice and Community Safety

Improve environmental conditions, noise conditions, and air and water quality for all residents and people working in the City by minimizing the impacts of industrial businesses, truck and commuter traffic, and contaminated lands.



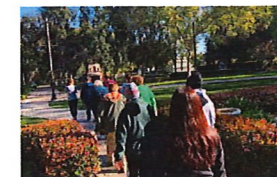
Clean and Sustainable Environment

Insist upon remediation of contaminated land and take steps to prevent pollution from the different processes involved in industrial business operations. Make rational use of natural resources to support environmental responsibility and the collective health of residents, employees, and visitors.



Adaptive and Resilient Community

Protect people, infrastructure, and community assets from evolving climate threats and vulnerabilities, and from natural and human-caused hazards.



Equitable and Inclusionary

Engage residents and stakeholders in ensuring equitable and inclusive processes, policies, investments, and service systems. Our residents in disadvantaged communities have access to healthy foods, parks, mobility options, public services, and safe homes.