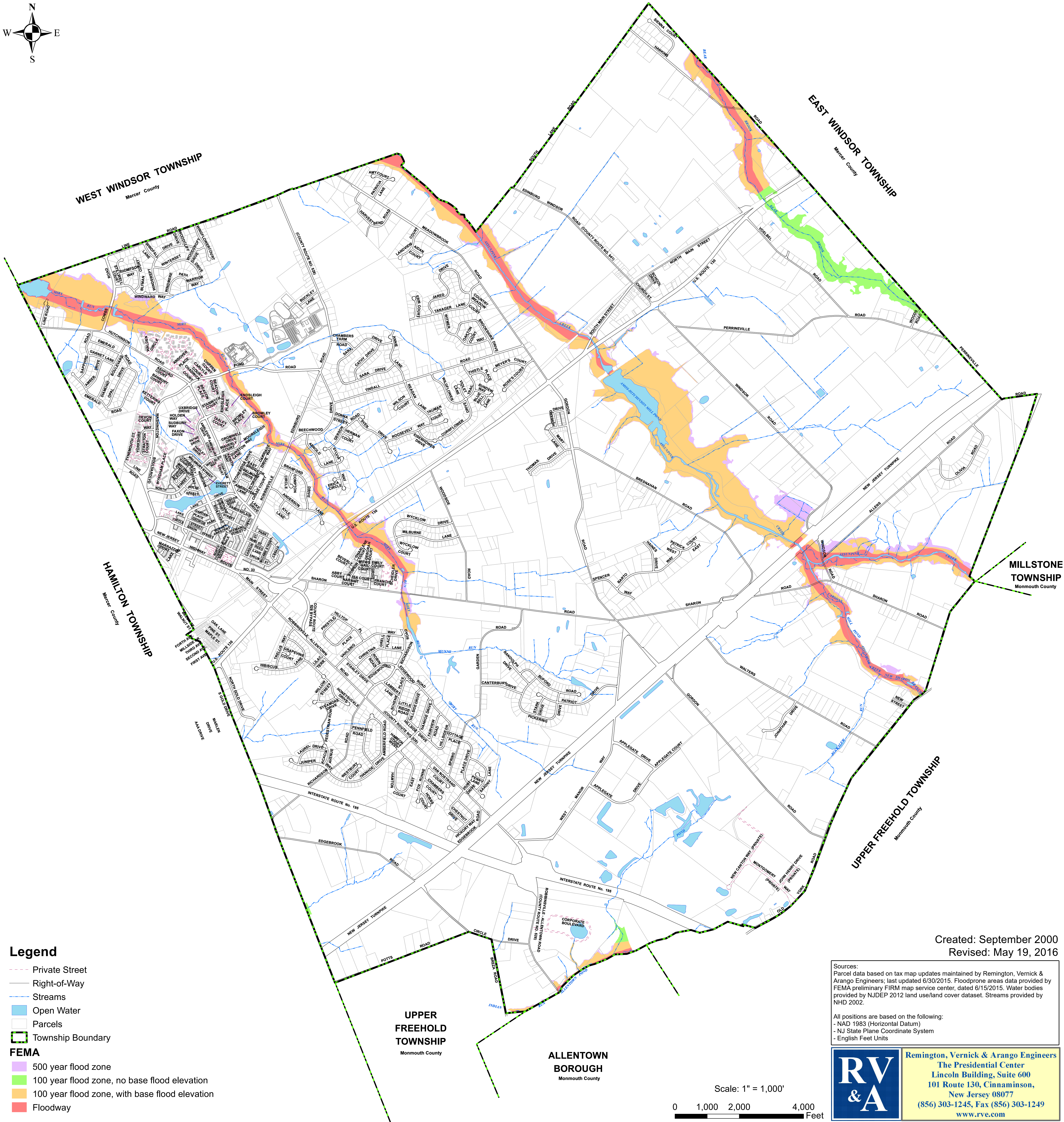
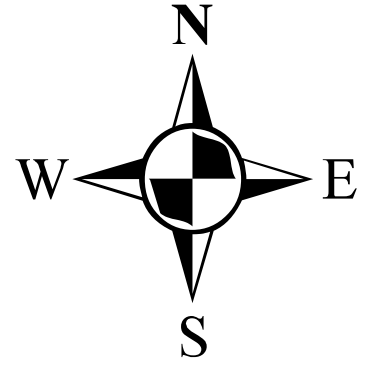


Floodprone Areas

Robbinsville Township
Mercer County, New Jersey



Legend

- Private Street
- Right-of-Way
- Streams
- Open Water
- Parcels
- Township Boundary

FEMA

- 500 year flood zone
- 100 year flood zone, no base flood elevation
- 100 year flood zone, with base flood elevation
- Floodway

Created: September 2000
Revised: May 19, 2016

Sources:
Parcel data based on tax map updates maintained by Remington, Vernick & Arango Engineers; last updated 6/30/2015. Floodprone areas data provided by FEMA preliminary FIRM map service center, dated 6/15/2015. Water bodies provided by NJDEP 2012 land use/land cover dataset. Streams provided by NHD 2002.

All positions are based on the following:
- NAD 1983 (Horizontal Datum)
- NJ State Plane Coordinate System
- English Feet Units



Remington, Vernick & Arango Engineers
The Presidential Center
Lincoln Building, Suite 600
101 Route 130, Cinnaminson,
New Jersey 08077
(856) 303-1245, Fax (856) 303-1249
www.rve.com

Scale: 1" = 1,000'

0 1,000 2,000 4,000 Feet