

## ORDINANCE INDEX 1980

ORDINANCE NO.	DESCRIPTION	ADOPTION DATE
80-1	Amend Chapter 17.52 of the Pierce County Code Relating to Sewage Disposal	April 15, 1980
80-2	An Ordinance to Create a County Building Code for One and Two-Family Dwellings	April 15, 1980
80-3	Amend Chapter 17.52 of the Pierce County Code Relating to Sewage Disposal	October 28, 1980
80-4	Pertaining to Protection of Snowmobile Trails	November 13, 1980
80-5	Pertaining to the Required Signature on all Order Checks	December 23, 1980
80-6	Amend Chapter 17.28 – Dedication of Land, and Chapter 17.32 – Plats, of Title 17 Subdivisions of the Pierce County Code	February 11, 1980

## RESOLUTION INDEX 1980

RESOLUTION NO.	DESCRIPTION	ADOPTION DATE
80-1	Revision of Board Rules	April 15, 1980
80-2	Settlement of 1979 General Taxes	April 15, 1980
80-3	Salary Adjustments for Law Enforcement Personnel	April 15, 1980
80-4	Salaries for Social Workers	May 27, 1980
80-5	Highway Committee Meetings	April 15, 1980
80-6	Fair Premiums	April 15, 1980
80-7	Solid Waste Management Plan	April 15, 1980
80-8	Transfer of Funds to River Falls Area Kinship, Inc.	May 27, 1980
80-9	County Support of Economic Development Planning Eligibility Funding	May 27, 1980
80-10	Salaries for Non-Union Employees	May 27, 1980
80-11	Designate a County Paper	First Ready Only May 27, 1980
80-12	Bank Depositories	May 27, 1980
80-13	Appointing An Acting County Treasurer	May 27, 1980
80-14	Salary Adjustment for Elected Officials	May 27, 1980
80-15	Salaries for elected Officials	May 27, 1980
80-16	Transfer of Funds for Personnel Grant	May 27, 1980
80-17	Salary Adjustments	June 24, 1980
80-18	Approve Contract for AFSCME 556B	June 24, 1980
80-19	Transfer of Funds	June 24, 1980
80-20	Revision of County Board Rules	June 24, 1980

80-21	Increase in Mileage Allowance	June 24, 1980
80-22	Support County Policy on Restitution through the Department of Health & Social Services	June 24, 1980
80-23	Salary Adjustment for Public Health Nurse	July 29, 1980
80-24	Designation of County Paper	July 29, 1980
80-25	Memorial to Al Austin	July 29, 1980
80-26	Proposed Highway Building	September 2, 1980
80-27	County Planner Position	September 2, 1980
80-28	Consolidated Aids	September 2, 1980
80-29	Requesting & Urging the Governor's Office to Continue to Assist the Local Governmental Units of Eau Claire, Dunn, Chippewa & Pierce Counties in Securing One-Hundred Percent (100%) of Federal Disaster Aid of the Eligible Costs.	September 2, 1980
80-30	Public Defender Program	September 2, 1980
80-31	Report of the Committee on Equalization	September 2, 1980
80-32	Farmland Preservation Agreements	September 2, 1980
80-33	Transfer of Funds	September 2, 1980
80-34	Increase Funding for Conservation Cost Sharing Program	October 28, 1980
80-35	Elderly and Handicapped Transportation Assistance	October 28, 1980
80-36	Designating the County Aging Unit	October 28, 1980
80-37	Approval of W.I.C. Program	October 28, 1980
80-38	Transfer of Funds	October 28, 1980
80-39	Senior Citizen Center Grant	October 28, 1980
80-40	Quit Claim Deed	October 28, 1980
80-41	Granting of an Easement	November 13, 1980
80-42	Delinquent Personal Property Tax	November 12, 1980
80-43	Authorization to Pay Claims	November 12, 1980
80-44	Care of Soldiers Graves	November 12, 1980
80-45	Assessors Claims	November 12, 1980
80-46	Dog Damage Claims	November 13, 1980
80-47	Pierce County Prime Farmlands	November 12, 1980
80-48	Purchase of Highway Equipment	November 12, 1980
80-49	Providing for the Advance or Transfer of Construction Funds in Pierce County	November 12, 1980
80-50	Improvement of County Trunk Bridges	November 13, 1980
80-51	Improvement of County Trunk Highways	November 13, 1980
80-52	County Aid Construction and Maintenance During the Calendar Year 1981	November 13, 1980



80-53	County Aid Bridge Construction Under Section 81.38 of the Statutes County of Pierce	November 13, 1980
80-54	Authorization to Purchase "Jaws of Life"	November 12, 1980
80-54A	Purchase of Old Highway Bridge	December 23, 1980
80-55	1981 Budget	November 13, 1980
80-55A	Pierce County Plat Book	December 23, 1980
80-56	Human Services Department Positions and Salaries	December 23, 1980
80-57	Indianhead Library System Board	December 23, 1980
80-58	Encourage Continuation of Great River Road	December 23, 1980
80-59	Farmland Preservation Grant Supplement	December 23, 1980
80-60	Approve contract for Law Enforcement Personnel	December 23, 1980
80-61	Approve the Professional Social Service Contract 1981	December 23, 1980
80-62	Not Issued	
80-63	Create Secretary for Planning & Civil Defense	December 23, 1980
80-64	Endorse Changes in re-apportionment Legislation	December 23, 1980
80-65	Create Additional Traffic Officer	December 23, 1980
80-66	Approval of Courthouse and Highway Contract	December 23, 1980
80-67	Not Issued	
80-68	Approve Salaries for Non-Union Personnel	December 23, 1980
80-69	Lease of Real Estate Belonging to Pierce County	December 23, 1980
80-70	Transfer of Funds	December 23, 1980
79-69	Resolution to Amend Resolution No. 78-82 Designation of Working Bank for County Checking Account	February 12, 1980
79-70	Designating The First National Bank of River Falls as the Working Bank	February 12, 1980
79-71	Motorcycle Park	Tabled Indefinitely June 24, 1980
79-71	Application for Wisconsin Septic Tank Grant	February 12, 1980
79-72	County fish and game Projects	March 25, 1980
79-73	Prescott Bridge	March 25, 1980
79-74	Computer Services for Pierce County	March 25, 1980
79-75	Appointing the Zoning Administrator to Accept the Wisconsin Fund Grant Offer #010400	March 25, 1980
79-76	Support Federal Revenue Sharing Extension	March 25, 1980
79-77	Support Senate Bill 586	March 25, 1980
79-78	Support of Pierce County Job Service	March 25, 1980

RESOLUTION 80-2 ✓  
SETTLEMENT OF 1979 GENERAL TAXES

TO THE HONORABLE BOARD OF SUPERVISORS  
FOR PIERCE COUNTY: WISCONSIN

GENTLEMEN:

BE IT RESOLVED that pursuant to Section 74.03 (8) (g) of the Wisconsin Statutes, the County Treasurer is hereby authorized and directed to settle in full with other civil divisions of Pierce County for all delinquent general taxes returned for collection on the 1979 tax rolls and remaining uncollected on August 1, 1980.

Dated this 15th day of April, 1980.

Ernest Christensen  
Howard B. Christensen  
William T. Alterick

RESOLUTION 80-3 —

SALARY ADJUSTMENTS FOR LAW ENFORCEMENT PERSONNEL

TO THE HONORABLE BOARD OF SUPERVISORS  
FOR PIERCE COUNTY: WISCONSIN

GENTLEMEN:

WHEREAS, an Agreement has been worked out between Personnel Committee and Pierce County Deputy Sheriff's Union.

The agreement is as follows:

1. One year contract

2. Wage increase:

10% increase effective January 1, 1980

an additional 2.5% effective July 1, 1980

3. Create Recreational Patrol Officer. He will be paid at straight time compensation except for emergencies as approved by Sheriff in excess of eight hours per day in which case he shall be paid the rate of one and one half times his normal pay.

4. Off duty court appearance:

Shall be compensated at the rate of one and one half times for the first two hours, and compensated at straight time for all hours thereafter, except there shall be no compensation if the court appearance occurs within the first hour following the completion of a shift.

5. Each supervisor pay step shall be increased by the sum of \$5.00

SO NOW THEREFORE BE IT RESOLVED that the County Board of Pierce County adopt the proposals as set forth in the above provisions..

DATED THIS 15th DAY OF APRIL, 1980

*Thomas J. Christensen*  
*William T. Hutterick*  
*Ray J. Lindsey*  
*Lawrence W. Wink*

RESOLUTION NO. 80-4

SALARIES FOR SOCIAL WORKERS L

TO THE HONORABLE BOARD OF SUPERVISORS FOR PIERCE COUNTY, WISCONSIN

GENTLEMEN:

WHEREAS, an Agreement has been worked out between Personnel Committee and Pierce County Social Workers. The agreement is as follows:

- 1.) One year contract.
- 2.) Wages Increase:
  - Increased 10% as of January 1, 1980
  - Increased an additional 2.5% as of July 1, 1980
- 3.) Mileage Compensation effective January 1, 1980:
  - Car Allowance - \$25.00 per month
  - 18¢ per mile
- 4.) Additional one-half day holiday on Christmas Eve or last working day before Christmas Holiday.
- 5.) Compensation for on-call time and all Social Service Section emergencies:
  - 50¢ per hour from 6:00 p.m. to 7:00 a.m. Monday through Friday.
  - 50¢ per hour from 6:00 p.m. Friday to 7:00 a.m. Monday
  - 50¢ per hour for Holidays
  - Minimum of two hours pay at contract rate when actually called out on an emergency.
  - When on call must have a pager in possession at all times and respond to call within thirty minutes.
- 6.) An annual sum of \$100.00 per year payable each January to off-set necessary and incidental expenses for carrying out public related functions of the Department during off duty hours.

SO, NOW, THEREFORE, BE IT RESOLVED, that the Pierce County Board of Supervisors assembled here this 27th day of May, 1980, accept the proposed agreement.

Dated this 27th day of May 1980

Walter J. Gustafson  
Lawrence W. Wauer  
William F. Feltner  
L. Ray Knudsen



RESOLUTION 80-5  
HIGHWAY COMMITTEE MEETINGS ✓

TO THE HONORABLE BOARD OF SUPERVISORS  
FOR PIERCE COUNTY: WISCONSIN

GENTLEMEN:

WHEREAS, under Wisconsin Statutes, committees of the County Board are not to exceed the thirty meeting limit under approval by County Board, and

WHEREAS, road schools are informational and educational in nature as opposed to business sessions whereat highway committee business is conducted,

THEREFORE BE IT RESOLVED, that road schools attended by members of the Highway Committee do not constitute meetings of the Highway Committee for purposes of the sixty meeting limit imposed by County Board Resolution 75-13.

DATED THIS 15TH DAY OF APRIL, 1980

*Clyde H. Wolf*  
\_\_\_\_\_  
*Arnold Odell*  
\_\_\_\_\_  
*Lawrence Wauer*  
\_\_\_\_\_  
\_\_\_\_\_  
\_\_\_\_\_

RESOLUTION 80-6

FAIR PREMIUMS

TO THE HONORABLE BOARD OF SUPERVISORS  
FOR PIERCE COUNTY: WISCONSIN

GENTLEMEN:

WHEREAS, under Wisconsin Statutes, County accounts are not to be overdrawn, and

WHEREAS, fair premiums earned at the County fair must be paid by the County before a claim can be presented for State Aid share of premiums, and

SO BE IT RESOLVED, that the County Clerk of Pierce County be and is authorized to accept and pay voucher claims for 1980 Fair Premiums from the County General Fund, which amounts shall be reimbursed to the General Fund upon receipt of State Aid share for such premiums, further provided that the above voucher claims shall be open class premiums, 4-h premiums and educational premiums only.

DATED THIS 15th DAY OF APRIL, 1980

Thomas J. Christensen  
Howard B. Christensen  
William Faltusich

RESOLUTION NO. 80-7

Solid Waste Management Plan

TO THE HONORABLE BOARD OF SUPERVISORS  
FOR PIERCE COUNTY, WISCONSIN

GENTLEMEN:

WHEREAS, in the near future sanitary landfills within Pierce County may be required to close or upgrade their condition due to recent federal and state regulations, and

WHEREAS, the Wisconsin Department of Natural Resources has 50% matching grant funding available for preparing a county solid waste management plan, and

WHEREAS, Pierce County has applied for and is eligible to receive those funds,

NOW, THEREFORE, BE IT RESOLVED, that Pierce County accept the 50% matching grant offer and prepare a county solid waste management plan to help guide future decisions regarding the management of solid waste disposal in the county.

SO NOW THEREFORE BE IT RESOLVED that Pierce County share will not exceed \$14,726.25.

Submitted by Zoning Committee

Lawrence W. W.  
Thomas Tyler  
Robert E. Smith  
Francis Carlson

I, David Sorenson, County Clerk for Pierce County do hereby certify that the foregoing Resolution was adopted by the Pierce County Board of Supervisors on April 15th, 1980

David Sorenson  
David Sorenson, County Clerk



RESOLUTION NO. 80-8 ✓

TITLE: TRANSFER OF FUNDS TO RIVER FALLS AREA KINSHIP, INC.

INTRODUCED BY THE BOARD OF SOCIAL SERVICES

To: The Honorable Board of Supervisors of Pierce County, Wisconsin

Gentlemen:

WHEREAS, River Falls Area Kinship, Inc. is dedicated to the task of providing paraprofessional services to youth in Pierce County who come from single parent families, foster homes, large families, and families experiencing problems, and

WHEREAS, the Kinship program is designed to prevent and alleviate those problems experienced by youth that lead to drugs, alcohol, delinquency, truancy, promiscuity and running away, and

WHEREAS, the effectiveness of the Kinship program has been praised by River Falls area schools, churches, police department, and juvenile officers, and

WHEREAS, River Falls Area Kinship, Inc. receives \$19,851.20 from donations and other programs toward an annual budget of \$34,857.60,

NOW, THEREFORE, BE IT RESOLVED, THAT \$6,200. be transferred from the General Fund to River Falls Area Kinship, Inc. to allow them to continue their work and expand services to all areas of the county for the remainder of calendar year 1980.


Dated: May 27, 1980

SOCIAL SERVICE BOARD:

  
James Van Winkle

  
Roy J. Finley

  
Ther Isaacson

  
Thomas Tyler

  
James Rusch



County Support of Economic Development  
Planning Eligibility Funding

TO THE HONORABLE BOARD OF SUPERVISORS  
FOR PIERCE COUNTY, WISCONSIN

GENTLEMEN:

WHEREAS, Pierce County desires to improve the economic condition of its citizens; and

WHEREAS, one way to improve economic conditions is to selectively invest public money in community efforts to increase permanent local employment; and

WHEREAS, the Mississippi River Regional Planning Commission has been designated an Economic Development District under the Public Works Economic Development Act of 1965, as amended; and

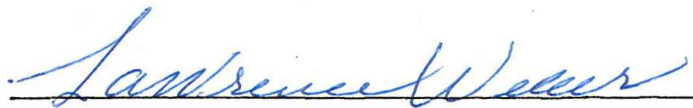
WHEREAS, by this area-wide designation, Pierce County has become eligible for additional federal economic development assistance; and

WHEREAS, the Mississippi River Regional Planning Commission has initiated an overall economic development program whereby communities work together to bring about sound economic development; and

WHEREAS, the Pierce County Board of Supervisors has reviewed the principal findings of the initial stages of this economic development planning process and finds no conflict with local plans and programs,

NOW THEREFORE BE IT RESOLVED, that the Pierce County Board of Supervisors hereby concurs with the findings and conclusions of the overall economic development program of the Mississippi River Economic Development District and agrees to support the District in its efforts to aid sound economic development planning in western Wisconsin.

Dated this 27<sup>th</sup> day of May, 1980.

  
\_\_\_\_\_

  
\_\_\_\_\_

  
\_\_\_\_\_

RESOLUTION 80-10 —

SALARIES FOR NON-UNION EMPLOYEES

TO THE HONORABLE BOARD OF SUPERVISORS  
FOR PIERCE COUNTY: WISCONSIN

GENTLEMEN:

WHEREAS, The Personnel Committee has reviewed salaries  
for all employes not covered by a bargaining unit, and

WHEREAS, The Committee feels with the economic times that  
we are in now experiencing a ten per cent across the Board salary  
increase would be in line, and

SO NOW THEREFORE BE IT RESOLVED that the Pierce County  
Board of Supervisors accept the proposal of a ten per cent salary  
adjustment across the Board for following positions retroactive to  
January 1980.

Extension Agents  
Civil Defense Director  
Highway Safety Coordinator  
Public Health Director  
Public Health Nurses  
Zoning Administrator  
Nutrition Director  
Child Support Director  
Child Support Investigator  
Maintenance Supervisor  
Veterans Service Officer  
Nutrition Site Manager  
Senior Citizen Coordinator  
Assistant District Attorney  
Highway Commissioner

Assistant Highway Commissioner  
Parks Director  
Family Court Commissioner  
Conservation Technicians  
Social Services Director  
Assistant Social Services Director  
Income Maintenance Lead Worker  
Administrative Assistant  
County Librarian  
Assistant Librarian

BE IT FURTHER RESOLVED that temporary employes be paid \$3.60 per hour  
effective June 1, 1980.

DATED THIS 27TH DAY OF MAY, 1980

*L. Roy Knudsen*  
*Walter J. Christensen*  
*Samuel W. Wacker*  
*William J. Faltwick*  
*Raymond J. Adams*  
*Joseph B. Christensen*



RESOLUTION NO. 80-12

BANK DEPOSITORIES

TO THE HONORABLE BOARD OF SUPERVISORS  
FOR PIERCE COUNTY, WISCONSIN

GENTLEMEN:

WHEREAS, the Wisconsin Statutes provide that bank depositories for County funds be designated for each ensuing year,

THEREFORE BE IT RESOLVED, that the following are bank institutions for Pierce County funds for the calendar year of 1980:

Bank of Ellsworth, Ellsworth, Wisconsin  
Hiawatha National Bank, Hager City, Wisconsin  
First National Bank, River Falls, Wisconsin  
First National Bank, Maiden Rock, Wisconsin  
Bank of Spring Valley, Spring Valley, Wisconsin  
River Falls State Bank, River Falls, Wisconsin  
First State Bank, Elmwood, Wisconsin  
First Federal Savings & Loan Association of Eau Claire,  
Ellsworth Branch  
River Falls Federal Savings & Loan Association,  
River Falls, Wisconsin  
First Federal Savings & Loan Association of Durand,  
Spring Valley Branch

Dated this 27<sup>th</sup> day of May, 1980.

Wm. J. Christensen

William J. Christensen

Howard B. Christensen

Raymond Christensen

I, David Sorenson, County Clerk for Pierce County do hereby certify that the foregoing Resolution was adopted by the Pierce County Board of Supervisors on May 27th, 1980.

David Sorenson

David Sorenson, Pierce County Clerk

APPOINTING AN ACTING COUNTY TREASURER

TO THE HONORABLE BOARD OF SUPERVISORS  
FOR PIERCE COUNTY, WISCONSIN

GENTLEMEN:

WHEREAS, Tim Early, County Treasurer, resigned on May 1, 1980,  
and

WHEREAS, the Finance Committee has discussed the vacancy with  
Mr. Early, and

WHEREAS, the Committee met with the current Deputy Treasurer  
to work out a solution to keep the office running effectively  
for the remainder of Mr. Early's term which expires on the first  
Monday of January, 1981.

SO NOW THEREFORE BE IT RESOLVED, that the Pierce County Board  
of Supervisors on the recommendation of the Finance Committee  
appoint the current Deputy, Beverly Lucente, as Acting County  
Treasurer to fill out the term of Mr. Early. The appointment to  
take effect as of June 1, 1980.

BE IT FURTHER RESOLVED, that Beverly Lucente will be compen-  
sated an additional \$250.00 per month above her current salary as  
Deputy County Treasurer.

Dated this 27<sup>th</sup> day of May, 1980.

Thomas J. Christensen

Lawrence Weaver

Kellie Galtwick

Edward B. Christensen

\_\_\_\_\_

SALARY ADJUSTMENT FOR ELECTED OFFICIALS

TO THE HONORABLE BOARD OF SUPERVISORS  
FOR PIERCE COUNTY, WISCONSIN

GENTLEMEN:

WHEREAS, the Elected Officials met with the Finance Committee in regard to adjusting salaries for 1980, and

WHEREAS, when salaries were set back in 1978 for the term of office, it was not anticipated the high rate of inflation that the country is experiencing in the year, and

SO NOW THEREFORE BE IT RESOLVED, that Pierce County Board of Supervisors assembled this 27<sup>th</sup> day of May, 1980, accept the recommendation of the Finance Committee and increase salaries for six elected officials \$1,000.00 each, retroactive to January 1, 1980.

Dated this 27<sup>th</sup> day of May, 1980.

Thomas J. Christensen

William F. Albrecht

Lawrence W. Wier

Raymond J. Allen

Harold B. Christensen



GENTLEMEN:

SO NOW THEREFORE BE IT RESOLVED, the Pierce County Board of Supervisors accept the proposal as set forth in the following schedule:

	<u>1980</u>	<u>1981</u>
County Clerk *	\$ 14,748.00	\$ 16,498.00
Register of Deeds	\$ 15,084.00	\$ 16,834.00
Clerk of Court	\$ 15,552.00	\$ 17,302.00
Treasurer	\$ 15,084.00	\$ 16,834.00
District Attorney	\$ 24,856.00	\$ 26,606.00
Sheriff *	\$ 17,856.00	\$ 19,606.00

Dated this 27<sup>th</sup> day of May, 1980.

### Finance Committee Members

Marion J. Munsterson  
Katherine Gatterick  
Lawrence Weaver  
Raymond Anderson

TRANSFER OF FUNDS FOR PERSONNEL GRANT

TO THE HONORABLE BOARD OF SUPERVISORS  
FOR PIERCE COUNTY: WISCONSIN

GENTLEMEN:

WHEREAS, Pierce County is in the process of entering into computer services, and

WHEREAS, There is a grant available through the Bureau of Community Management Services project which would focus on the County's specific personnel management problems, needs and strengths, and

SO NOW THEREFORE BE IT RESOLVED that Pierce County authorize a transfer of \$1,000 from general fund as our matching share toward this project.

DATED THIS 27TH DAY OF MAY 1980.

Thomas J. Huston  
William F. Hultine  
Howard B. Christensen  
Raymond Anderson  
Lawrence W. Waser

RESOLUTION 80-17 ✓

SALARY ADJUSTMENTS

TO THE HONORABLE BOARD OF SUPERVISORS  
FOR PIERCE COUNTY: WISCONSIN

GENTLEMEN:

WHEREAS, The Public Health Director has met with the Personnel Committee in regard to adjustments for personnel in the Public Health Department, and

WHEREAS, The committee agreed to a 10% increase for two home care aides, one home care nurse.

SO NOW THEREFORE BE IT RESOLVED, that the Pierce County Board of Supervisors accept the proposal and salaries be retro-active to January 1, 1980.

DATED THIS 24TH DAY OF JUNE, 1980.



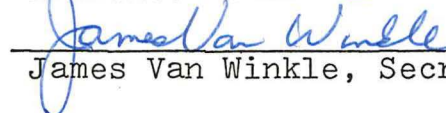
Marvin Christenson, Chairman



William Falteisek, Vice Chairman



Lawrence Weber



James Van Winkle, Secretary

Le Roy Knudsen





RESOLUTION NO. 80-18

APPROVE CONTRACT FOR AFSCME 556B

TO THE HONORABLE BOARD OF SUPERVISORS  
FOR PIERCE COUNTY, WISCONSIN

GENTLEMEN:

WHEREAS, Personnel Committee and Representatives of AFSCME 556B have negotiated a contract for 1980; and

WHEREAS, this group represents non-professional workers in the Social Service Department, and

WHEREAS, the following agreement is as follows:

Effective January 1, 1980, salary would be increased by \$60.00, per month

Effective July 1, 1980, salary would be increased by \$72.50. per month

SO NOW THEREFORE BE IT RESOLVED, that the Pierce County Board of Supervisors accept the agreement as stated above in the foregoing Resolution.

Dated this 24<sup>th</sup> day of June, 1980.

William J. Musterson  
William Faltusich  
James L. Wible  
Lawrence W. Wiles  
L. Roy Tondra

RESOLUTION 80-19

TRANSFER OF FUNDS

TO THE HONORABLE BOARD OF SUPERVISORS  
FOR PIERCE COUNTY: WISCONSIN

GENTLEMEN:

WHEREAS, The Village of Ellsworth has requested financial aid from Pierce County in the repair of a bridge in the Village of Ellsworth known as "Sawmill Bridge", and

WHEREAS, The Village of Ellsworth is in need of the repair of the bridge, and is unable to finance it at this time, and

WHEREAS, There exists a Statute, To-wit; Section 83.03, Wisconsin Statutes, which authorizes a county to aid in the repair or construction of a bridge within the County, and

NOW THEREFORE BE IT RESOLVED that the Pierce County Board of Supervisors transfer up to \$4,250.00 from General Fund to Village of Ellsworth to repair the "Sawmill Bridge" in the Village of Ellsworth.

DATED THIS 24TH DAY OF JUNE, 1980,

Lawrence Weiner  
Kellian Totterik  
Reuben Hanschelt  
Arnold Odalen  
Clyde H. Woy

PIERCE COUNTY HIGHWAY COMMITTEE



RESOLUTION 80-20

REVISION OF COUNTY BOARD RULES

TO THE HONORABLE BOARD OF SUPERVISORS  
FOR PIERCE COUNTY: WISCONSIN  
GENTLEMEN:

CHAPTER 2.03 PROPOSED ADDITIONAL POLICIES

WHEREAS, The Finance Committee has deemed it necessary to make changes and additions to Chapter 2.03.440 of the Board rules, and

NOW, THEREFORE BE IT RESOLVED, that Chapter 2.03.440 (B) is repealed and recreated to read as follows:

B. For each half day or evening meeting in attendance at any regular or special board meeting or any committee meeting, a supervisor shall receive \$25.00 per diem, plus 19¢ per mile for an individual who drives. The Board Chairman to receive an additional \$100.00 per month.

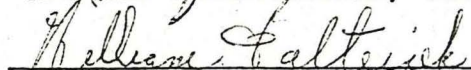
THE FOLLOWING ADDITIONAL POLICIES WILL BE ADDED


C. A department administrator and first deputy or assistant shall not be absent at same time to attend conventions without the approval of the County Board Chairman.

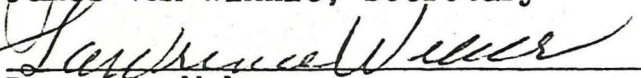
D. County will not pay for registrations in advance, but individual will be reimbursed when they present proof of attendance to claims committee. Pre-Registration will be allowed when it is determined that the convention is mandatory for work related functions.

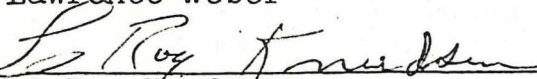
POLICIES AND CHANGES TO TAKE EFFECT AS OF JULY, 1, 1980.

  
Marvin Christenson, Chairman

  
William Falteisek, Vice Chairman

  
James Van Winkle, Secretary

  
Lawrence Weber

  
LeRoy Knudsen

RESOLUTION 80-21 -

INCREASE IN MILEAGE ALLOWANCE

TO THE HONORABLE BOARD OF SUPERVISORS  
FOR PIERCE COUNTY: WISCONSIN

GENTLEMEN:

WHEREAS, Pierce County has reimbursed employees for the use of their private automobiles for official business at the rate of 18¢ per mile since May 1, 1979, and

WHEREAS, the price of automobiles has increased and the price of gasoline has increased and will continue to increase, and

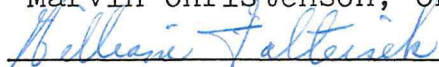
THEREFORE BE IT RESOLVED, that the mileage allowance be paid at the rate of 19¢ per mile for all mileage for county employees while on official county business effective July 1, 1980.

BE IT FURTHER RESOLVED that employees whose mileage allowance is established by union contract be exempt.

DATED THIS 24th DAY OF JUNE, 1980.



Marvin Christenson, Chairman

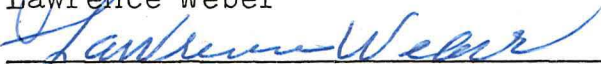


William Falteisek, Vice Chairman

James Van Winkle, Secretary



Lawrence Weber



Le Roy Knudsen





RESOLUTION NO. 80-22 ✓

SUPPORT COUNTY POLICY ON RESTITUTION THROUGH  
THE DEPARTMENT OF HEALTH & SOCIAL SERVICES

TO THE HONORABLE BOARD OF SUPERVISORS  
FOR PIERCE COUNTY, WISCONSIN

GENTLEMEN:

WHEREAS, Wisconsin State Statute 973.09 (1) has been amended in several respects.

1) It now requires Courts to order restitution unless the Court on the record finds substantial reasons not to order restitution.

2) It requires probationers to pay a surcharge equal to 10% of the amount of restitution to the Clerk of Circuit Court or to the Department of Health and Social Services, depending upon the determination in the county as to who shall collect the restitution- the Clerk of Circuit Court or the Department of Health and Social Services, and

WHEREAS, Pierce County currently has restitution collected by the Department of Health and Social Services and has proved to be acceptable to all operating agencies, and

SO NOW THEREFORE BE IT RESOLVED, that Pierce County Board of Supervisors go on record as supporting the current system of having the Health and Social Services Department collect restitution through their agency and reimburse

Dated this 24<sup>th</sup> day of June, 1980.

*Thomas J. Rostman*

*William F. Alterick*

*L. Roy Anderson*

RESOLUTION 80-23 ✓

SALARY INCREASE FOR PUBLIC HEALTH NURSE

TO THE HONORABLE BOARD OF SUPERVISORS  
FOR PIERCE COUNTY: WISCONSIN

GENTLEMEN:

WHEREAS, Sharon Schulze, Public Health Nurse has assumed additional responsibilities in the Public Health Department, and

WHEREAS, The Personnel and Public Health Committee's have recommended a salary increase for these additional responsibilities from \$5.75 per hour to \$6.60 per hour, and

SO NOW THEREFORE BE IT RESOLVED, that the above named individual be accorded a salary increase retro- active to July 7th, 1980.

DATED THIS 29TH DAY OF JULY, 1980.

James VanWinkle  
James R. Ruch  
Paul A. Isaacson  
Howard B. Christensen  
R. J. Seely



Designation of County Paper

TO THE HONORABLE BOARD OF SUPERVISORS  
FOR PIERCE COUNTY, WISCONSIN

GENTLEMEN:

WHEREAS, pursuant to Wisconsin Statutes, municipalities may under 985 officially designate an official newspaper, and

WHEREAS, pursuant to 985.03, an official newspaper must be eligible to publish legal notices, etc., and

WHEREAS, Pierce County has a unique situation that we do have two fine newspapers that are located at the county seat, and


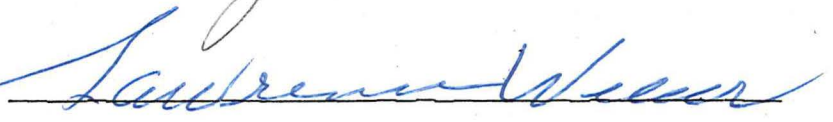

WHEREAS, the Printing Committee met with various newspapers in regard to establishing a policy for official newspaper designation, and

WHEREAS, it was agreed that the county official paper should be one of the two newspapers located in Ellsworth, because of the convenience for notices and etc.

SO NOW THEREFORE BE IT RESOLVED, that the County Board accept the recommendation of the Printing Committee to rotate between the two Ellsworth newspapers on an annual basis for official newspaper,

BE IT FURTHER RESOLVED, that effective August 1, 1980, Pierce County Herald will be named as official newspaper, and will continue until December 31, 1980. Thereafter, the Ellsworth Record, effective January 1, 1981, will be named official newspaper and will continue through the year 1981. Thereafter, the designation would be on a calendar year basis.

Dated this 29<sup>th</sup> day of July, 1980.

  
  
  
\_\_\_\_\_  
\_\_\_\_\_

RESOLUTION 80-25

MEMORIAL TO AL AUSTIN

WHEREAS, A respected and valued county board supervisors, Al Austin, has recently departed this life; and

WHEREAS, Al Austin was a dedicated member of the Pierce County Board for many years and gave much of his valued time and effort for the people of Pierce County; and

WHEREAS, The Pierce County Board of Supervisors wish to extend their sincere sympathy to Mrs Austin; now therefore be it

RESOLVED, that this Resolution be adopted and spread upon the minutes and a copy be presented to the bereaved Austin family.

DATED THIS 29TH DAY OF JULY, 1980.

Lydia Wolf  
Jamela Wible  
James Rensch  
Fred A. Isaacson  
Loy Anders  
William Salterick  
Howard B. Christensen  
Dan McCordle  
Francis Coulson

Thomas L. Tyler  
L Roy Knudsen  
Roy L. Finley  
Kenneth Anderson  
Reuben Hauschildt  
Arnold Odalen  
Lambert W. Waser  
Manning Christensen



RESOLUTION 80-26 ✓

PROPOSED HIGHWAY BUILDING

TO THE HONORABLE BOARD OF SUPERVISORS  
FOR PIERCE COUNTY: WISCONSIN

GENTLEMEN:

WHEREAS, Resolution 79-18 authorized the Special Building Committee to hire an engineering firm, proceed with plans and costs for a new Highway Shop and Office Building, and

WHEREAS, The committee hired the firm of Donohue & Associates to proceed with plans for this project, and

WHEREAS, The committee has advertised for and reviewed from several construction companies, and

WHEREAS, The following proposals received have been thoroughly reviewed by Donohue & Associates and is their recommendation that the we award the contracts as listed below:

CONTRACT A	GENERAL CONSTRUCTION	\$1,080,000
CONTRACT B	PLUMBING	\$ 95,000
CONTRACT C	HEATING , ETC	\$ 169,000
CONTRACT D	ELECTRICAL	<u>\$ 86,000</u>
		\$1,430,000

SO NOW THEREFORE BE IT RESOLVED that Pierce County Board of Supervisors approve the bids as stated above, and

BE IT FURTHER RESOLVED that the Pierce County Board authorize the Special Building Committee to proceed with the construction of the proposed highway shop and office building.

DATED THIS 2ND DAY OF SEPTEMBER, 1980

*Murray Hutchinson*  
*Lawrence Weber*  
*James Van Winkle*  
*Robert Hauschildt*  
*William F. Teisch*

COUNTY PLANNER POSITION

TO THE HONORABLE BOARD OF SUPERVISORS FOR PIERCE COUNTY, WISCONSIN

GENTLEMEN:

WHEREAS, Pierce County is experiencing rapid population growth and development pressure which is resulting in land use conflicts and loss of prime agricultural land, and

WHEREAS, Pierce County farmers are participating in the Wisconsin Farmland Preservation Program, which requires the County to prepare a Farmland Preservation Plan by 1982 to continue their eligibility for tax credits under this program, and

WHEREAS, development and implementation of land use plans, outdoor recreation plans, solid waste management plans, and other planning studies necessitates the formation of a county planning department and a county planner position to undertake these planning programs,

~~NOW THEREFORE BE IT RESOLVED, that~~ Pierce County establish<sup>ed</sup> a county planning department, develop a departmental budget and create a half-time county planner position, who will report to the Zoning Committee.

Dated this 25th day of August, 1980.

Respectfully Submitted,

*Ed Roy Anderson*  
*Steve Hoffman*  
*Elmer Holcomb*

Pierce County Zoning Committee

*Pierce County has established a county  
Planning department, developed a departmental<sup>budget</sup>  
position, created a half-time  
planner, ~~who is~~ who is responsible to the  
Zoning Committee.*



RESOLUTION NO. 80-28 ✓

TITLE: CONSOLIDATED AIDS

INTRODUCED BY THE BOARD OF SOCIAL SERVICES

Gentlemen:

Whereas, Pierce County will go to a single county Human Services System on January 1, 1981, and

Whereas, the provision for Consolidated Aids under Section 46.033, Wisconsin Statutes, allows for more county control and flexibility in using funds from various sources,

There, Be it Resolved, that this resolution be a formal request to the State Department of Health and Social Services for permission for the Pierce County Department of Human Services to operate as a consolidated agency under Section 46.033,

Be it Further Resolved, that the County Clerk be instructed to send a certified copy of this resolution to Mr. Royal Roberts, Director, Western Regional Office, 718 W. Clairemont Avenue, P. O. Box 228, Eau Claire, Wisconsin 54701.

Dated: September 2, 1980

PIERCE COUNTY BOARD OF HUMAN SERVICES

Howard Christenson  
Howard Christenson, Chairman

Thomas Tyler  
Thomas Tyler

Iner A. Isaacson  
Iner Isaacson

Roy J. Finley  
Roy J. Finley

James Van Winkle  
James Van Winkle

I, David Sorenson, County Clerk for Pierce County do hereby certify that the foregoing Resolution was adopted by the Pierce County Board of Supervisors on September 2nd, 1980.

David Sorenson  
David Sorenson, Pierce County Clerk

RESOLUTION 80-29 ✓

REQUESTING & URGING THE GOVERNOR'S OFFICE TO CONTINUE TO ASSIST THE LOCAL GOVERNMENTAL UNITS OF EAU CLAIRE, DUNN, CHIPPEWA & PIERCE COUNTIES IN SECURING ONE-HUNDRED PERCENT (100)% OF FEDERAL DISASTER AID OF THE ELIGIBLE COST.

TO THE HONORABLE BOARD OF SUPERVISORS  
FOR PIERCE COUNTY: WISCONSIN

GENTLEMEN:

WHEREAS, Public Law 91-606 (Disaster Relief Act of 1970) Section 203 (b), passed on December 31, 1970 provides for making repairs to, restoring to service, or replacing public facilities including streets, roads and highway facilities of state and local governments damaged or destroyed by a major disaster; and

WHEREAS, Public Law 93-288 clarifies Section 402 (e) of Public Law 91-606 was passed on May 22, 1974 and states that the federal contribution for grants made under this section shall not exceed one-hundred percent (100%) of the net cost of repairing, restoring, reconstructing, or replacing any such facility on the basis of the design of such facility as it existed immediately prior to such disaster and in conformity with the current applicable codes, specifications, and standards; and

WHEREAS, it seems strange to the County of Pierce in view of Public Law 93-288 that one-hundred percent (100%) of the eligible costs for reimbursement is subjective to an arbitrary reduction by the federal government; and

WHEREAS, both the public and private sector within Pierce County is in excess of twenty nine million dollars (\$29,000,000) in damage; and

WHEREAS, the impact from the public sector alone will mean an additional property tax burden to the taxpayers of Pierce County; and

WHEREAS, the current formula of one hundred percent (100%) of eligible costs in no way covers all the cost associated with this disaster;

NOW, THEREFORE, BE IT RESOLVED that the Pierce County Board of Supervisors request and urges the Governor's Office to assist the local governmental units of Eau Claire, Dunn, Chippewa & Pierce Counties in securing one-hundred percent (100%) of federal disaster aid of the eligible cost;

BE IT FURTHER RESOLVED that the County Clerk is hereby directed to furnish a certified copy of this Resolution to the Wisconsin Congressional Delegation.

Dated this 2nd day of September, 1980.

Marvin J. Christensen  
Howard B. Christensen  
Thomas Tyler



RESOLUTION 80-30 ✓

PUBLIC DEFENDER PROGRAM

TO THE HONORABLE BOARD OF SUPERVISORS  
FOR PIERCE COUNTY: WISCONSIN

GENTLEMEN:

WHEREAS, The State of Wisconsin on June 28th, 1980 adopted a Public Defender Program for the State of Wisconsin, and

WHEREAS, Under Chapter 977.07 (1) (B) (3) Pierce County will administer the program locally, and

WHEREAS, All indigent counsel will be handled by Pierce County Attorneys, and

SO NOW THEREFORE BE IT RESOLVED that Pierce County Board appoint William Disney, Attorney at Law to determine indigency for Pierce County

BE IT FURTHER RESOLVED that in his absence any Court Commissioner could fill this capacity.

DATED THIS 2ND DAY OF SEPTEMBER, 1980.

Maurice J. Christensen  
Raymond Anderson  
Howard B. Christensen  
\_\_\_\_\_

## REPORT OF THE COMMITTEE ON EQUALIZATION

Ellsworth, Wisconsin  
August 27, 1980

TO THE HONORABLE BOARD OF SUPERVISORS OF PIERCE COUNTY:

We, the undersigned Committee on Equalization of Pierce County, after a careful examination of all evidence and data placed before us by the Supervisor of Assessments of said county and all other data at our disposal, do hereby agree that the following valuations set out after each taxation district are the correct valuations of the real and personal property of said county for the year 1980 and recommend that the county assessment of district values be made on said basis.

<u>DISTRICT</u>	<u>TOTAL VALUATION</u>
TOWNS:	
Clifton	46,693,730
Diamond Bluff	9,790,440
Ellsworth	33,113,090
El Paso	21,367,840
Gilman	23,874,030
Hartland	27,817,850
Isabelle	6,301,090
Maiden Rock	20,343,840
Martell	24,289,680
Oak Grove	37,426,810
River Falls	55,326,020
Rock Elm	19,987,960
Salem	20,846,350
Spring Lake	16,976,970
Trenton	42,268,140
Trimbelle	34,019,320
Union	24,461,030
VILLAGES:	
Bay City	4,223,200
Ellsworth	35,409,370
Elmwood	11,531,490
Maiden Rock	2,305,250
Plum City	5,426,920
Spring Valley	13,007,300
CITIES:	
Prescott	52,552,130
River Falls	97,748,470
COUNTY TOTAL	687,108,320

RESPECTFULLY SUBMITTED,

*Theresa Christensen*  
*Laurence Weber*  
*K. Anderson*

*William Faltz*  
*Howard B. Christensen*



# FARMLAND PRESERVATION AGREEMENTS

WHEREAS, The Pierce County Planning & Zoning and Pierce County Agriculture Extension & Educational committees have been designated by the County Board of Supervisors to review and make recommendations on Farmland Preservation Agreement applications, and

WHEREAS, applications of the below listed applicants have been referred to the required agencies for a 30 day review period, and comments from said agencies have been considered, and

WHEREAS, the lands of said applicants meet the eligibility requirements of the law, namely:

1. The land is 35 acres or more.
2. The land produced gross farm profits (as determined in accordance with Federal Schedule F) of \$6,000 or more in the previous year or \$18,000 or more in the previous 3 years.
3. The land was in agricultural use for at least 12 consecutive months during the preceding 36 months.
4. The land was used for one or more of the following:  
Beekeeping; dairying, egg production; floriculture;  
fish or fur farming; forest and game management;  
c grazing; livestock raising; orchards; plant greenhouses and nurseries; poultry raising; raising of grain, grass, mint and seed crops; raising of fruits, nuts and berries; sod farming; vegetable raising and commercial feedlots,
5. The land is owned by a resident of the state. An "Owner" includes an individual, legal guardian, corporation, incorporated in Wisconsin, business trust, estate, trust, partnership or association of 2 or more persons having a joint or common interest in the land. Where land is subject to a land contract, "owner" means the seller in agreement with the buyer.
6. A soil and water conservation district conservation plan is in effect or has been applied for, and
7. Landowner must include all existing tillable cropland according to Resolution No. 77-71.

WHEREAS, the land of said applicants meet the County's approved standards for approval, based on criteria specified in Sec. 91.13(4) relating to agricultural productivity, agricultural use, extent of contiguous ownership entered, consistency with existing Ag Preservation plans, or other criteria established by County Board of Supervisors.

NOW, THEREFORE, BE IT RESOLVED:

That the following named applicants for Farmland Preservation Agreements under Ch. 91 of the Wis. Stat. be approved by the Pierce County Board of Supervisors for participation in the Farmland Preservation Program: (See attached list)

NOW, THEREFORE, BE IT FURTHER RESOLVED:

That the following list of names be rejected because of ineligibility: (See attached list)

BE IT FURTHER RESOLVED:

That the applications of the named applicants be forwarded to the Wisconsin Department of Agriculture, Trade & Consumer Protection for preparation of Farmland Preservation Contracts.

R E J E C T E D

FARMLAND PRESERVATION AGREEMENTS

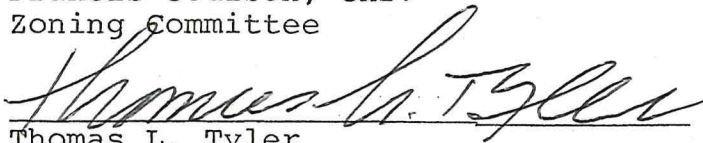
* Webster, Richard	16
* Adams, Thomas R.	18
* Tschumperlin, Harold	21
* Nellesen, Peter	24
* Borner, Gordon	31

---

\* Rejected because: No conservation plan



Francis Coulson, Chr.  
Zoning Committee



Thomas L. Tyler



LeRoy J. Knudsen



A P P R O V E D  
FARMLAND PRESERVATION AGREEMENTS

	<u>Application No.</u>
Anderson, Clarence	10
Beskar, Norm	23
Brunner, Donald	25
Brunner, James T.	26
Coulson, Francis	6
Country Hill, Inc.	27
Dettling, James	1
Hager, Charles	5
Hanson, Ed C.	9
Hines, Robert	29
Jansen, Dean	22
Kannel, Norbert and Harold	32
Kimball, Mark	3
Krogstad, Harold	4
Lansing, Percy	17
Linehan, Phil	8
Most, Walter	7
Nelson, Ronald W.	13
Rohl, Donald	30
Schladweiler, Gary	19
Traynor, Joseph J.	15
Williams, Terry	14
Huppert, Lawrence	2
Green, James J	11
Stein, Hilda	12
Shella, Lloyd	20
Lundgaard, Galen	28

RESOLUTION 80-33 ✓

TRANSFER OF FUNDS

TO THE HONORABLE BOARD OF SUPERVISORS  
FOR PIERCE COUNTY: WISCONSIN

GENTLEMEN:

WHEREAS, The Maiden Rock- Stockholm Area Ambulance Service is in the process of forming a service of providing ambulance service for the Maiden Rock area, and

WHEREAS, The initial cost for the ambulance and supplies needed to equip the vehicle will be approximately \$35,000.00, and

WHEREAS, In Pierce County the service will be provided for the citizens of Town of Maiden Rock, Village of Maiden Rock and part of Salem, and

WHEREAS, In the future the service could be extended to include a larger area, and

SO NOW THEREFORE BE IT RESOLVED that the Pierce County Board authorize transfer of \$3,000.00 to the Maiden Rock-Stockholm Area Ambulance service to initiate this valuable service to a portion of Pierce County.

DATED THIS 2ND DAY OF SEPTEMBER, 1980

Mary Ann Christensen  
Thomas Tyler  
L. Ray Anderson

Resolution #80-34 -

TITLE: FUNDING INCREASE FOR CONSERVATION COST SHARING PROGRAM

TO: The Honorable Board of Supervisors

Whereas, a great need exists for more flood and gully control structures and other conservation practices throughout the County on both private and public lands including projects in conjunction with County and Township roads, and

Whereas, the cost of such practices has risen substantially over the past few years, and Federal cost-sharing is limited to \$3,500.00 per land owner, and

Whereas, the Pierce County Board of Supervisors has appropriated \$25,000.00 annually for a conservation cost sharing program through passage of Resolution #76-14 dated May 25, 1976, and

Whereas, the Pierce Co. Soil and Water Conservation District has demonstrated its ability to develop and administer this cost sharing program, and

WHEREAS, many high priority and badly needed conservation projects have been completed under the Conservation Cost Sharing Program.

NOW, THEREFORE, BE IT RESOLVED, that the Pierce County Board of Supervisors increase the annual appropriation for cost sharing conservation practices with Pierce County Landowners and Units of Government, \$5,000.00 each year for five years, thereby bringing the total annual appropriation in five years to \$50,000.00.

Respectfully Submitted  
Pierce Co. Soil and Water  
Conservation District Supervisors

DAN Mc CARDLE  
Dan McCardle, Chairman

RAY ANDERSON  
Ray Anderson, Vice Chairman

FRANCIS COULSON  
Francis Coulson, Sec. Treas.

MARVIN CHRISTENSON

Marvin Christenson, Member  
Kenneth Anderson, Member

DATE

October 28, 1980



RESOLUTION NO. 80-35

TITLE: ELDERLY AND HANDICAPPED TRANSPORTATION ASSISTANCE

INTRODUCED BY THE BOARD OF SOCIAL SERVICES

To the Honorable Board of Supervisors of Pierce County, Wisconsin:

WHEREAS, Section 85.08(5) of the Wisconsin Statutes authorizes the Wisconsin Department of Transportation to make grants to the counties of Wisconsin for the purpose of assisting them in providing specialized transportation services to the elderly and the handicapped; and

WHEREAS, each grant must be matched with a local share of not less than 10% of each county's allocation of state aids; and

WHEREAS, this body considers that the provision of specialized transportation services would improve and promote the maintenance of human dignity and self-sufficiency of the elderly and the handicapped;

NOW, THEREFORE, BE IT RESOLVED, that the Board of Supervisors of Pierce County on this 28th day of October, 1980, authorizes Kathy Thompson to prepare and submit to the Wisconsin Department of Transportation an application for assistance during 1981 under Section 85.08(5) of the Wisconsin Statutes, in conformance with the requirements issued by that Department and also authorizes the obligation of funds in the amount of \$1273.00 identified in Exhibit C of the application in order to provide the required 10% local match.

BE IT FURTHER RESOLVED that the Board of Supervisors of Pierce County authorizes Kathy Thompson to execute a state aid contract with the Wisconsin Department of Transportation under Section

85.08(5) of the Wisconsin Statutes on behalf of Pierce County.

Dated: October 28, 1980

Roy J. Finley  
Roy Finley

James Rusch

Iner Isaacson  
Iner Isaacson

Thomas Tyler  
Thomas Tyler

James Van Winkle  
James VanWinkle

I, David Sorenson, County Clerk for Pierce County do hereby certify that the foregoing Resolution was adopted by the Pierce County Board of Supervisors on October 28th, 1980.

David Sorenson, County Clerk  
David Sorenson, County Clerk

RESOLUTION NO. 80-36

TITLE: REDESIGNATING THE COUNTY AGING UNIT

INTRODUCED BY THE BOARD OF SOCIAL SERVICES

To the Honorable Board of Supervisors of Pierce County, Wisconsin:

WHEREAS, the older residents of Pierce County have long been valuable contributing members to all areas of life and have done much to make our county a great place in which to live, and

WHEREAS, it is the intent of this Board to provide all older citizens the opportunity to realize their full potential, to have access to and to participate in all areas of community life, and

WHEREAS, it is necessary to designate a County Aging Unit to carry out the purpose of this resolution and to obtain all Federal and State financial assistance and program direction possible, and

WHEREAS, the Social Services Board that presently serves as the County Aging Unit will no longer function in 1981,

THEREFORE, BE IT RESOLVED, that beginning in 1981 the Human Service Board is designated as the County Aging Unit for Pierce County, and

BE IT FURTHER RESOLVED, that the duties of the County Aging Unit shall be:

- (a) Receive, disburse and administer funds for services and programs for older persons.
- (b) Develop and implement an annual, comprehensive, coordinated, county aging plan for programs for older people.
- (c) Give policy direction to staff for the county aging unit to carry out activities consistent with the purpose of this ordinance.
- (d) Review and approve all proposals relating to matters affecting older people that are considered by the County Board.
- (e) Provide information to individuals, groups, and



- (f) Assist county service agencies in organizing, developing, modifying, and expanding available services and programs for older people.
- (g) Identify and encourage the development of opportunities which enable older people to fully contribute to the welfare of the community.

BE IT FURTHER RESOLVED, that a County Council on Aging be appointed by the Board of Supervisors to serve in an advisory capacity to the Human Service Board, staff for all aging programs, and the Board of Supervisors on all matters relating primarily to citizens 60 years of age and older, and

BE FURTHER RESOLVED, that the Council have no less than five nor more than sixteen members, that 51% or more must be 60 years of age or older and 51% or more must be non-elected officials, and

BE IT FURTHER RESOLVED, that the Council shall establish rules of tenure and other rules necessary to function.

Date: October 28, 1980

Roy L. Finley  
Roy Finley

James Rusch

Iner Isaacson  
Iner Isaacson

Thomas Tyler  
Thomas Tyler

James VanWinkle  
James VanWinkle

I, David Sorenson, County Clerk for Pierce County do hereby certify that the foregoing Resolution was adopted by the Pierce County Board of Supervisors on October 28th, 1980.

David Sorenson, County Clerk  
David Sorenson, County Clerk

RESOLUTION 80-37

APPROVAL OF W.I.C. PROGRAM FOR PIERCE COUNTY

TO THE HONORABLE BOARD OF SUPERVISORS  
FOR PIERCE COUNTY: WISCONSIN  
GENTLEMEN:

WHEREAS, The Women, Infant, and Children (W.I.C.) Nutrition Program provides supplemental foods, such as milk, eggs, cheese, juice, and iron-fortified cereal to pregnant and lactating women, infants and children under 5, and

WHEREAS, the W.I.C. Program is available to low income women and children at nutritional risk in Pierce County, and

WHEREAS, The Pierce County Public Health Nursing Agency provides comprehensive maternalchild programs and can coordinate the W.I.C. Program with existing programs and clientele, and

WHEREAS, The administrative cost of the program can be minimized by utilizing a multi-county unit as the program's geographical base (Polk, Pierce and St Croix Counties)

BE IT THEREFORE RESOLVED, that Pierce County approve the W.I.C Program and administration will be handled by the Public Health Agency.

BE IT FURTHER RESOLVED that the Public Health Agency be authorized to employ a person to administer this program.

DATED THIS 28TH DAY OF OCTOBER, 1980.

James Van Winkle  
Gerald B. Sargent  
Felix A. Isaacson



RESOLUTION NO. 80-38

Transfer of Funds

TO THE HONORABLE BOARD OF SUPERVISORS  
FOR PIERCE COUNTY, WISCONSIN

GENTLEMEN:

WHEREAS, approximately a year ago when Pierce County conducted their hearing on proposed use of revenue sharing funds for 1980, representatives of Maiden Rock appeared and requested additional funds for the Maiden Rock Watershed, and

WHEREAS, the Finance Committee felt at the time there was ample funds in the account, but agreed to a transfer of funds in 1980 if more funds were needed.

WHEREAS, it appears considerable work has been done throughout the year,

SO NOW THEREFORE BE IT RESOLVED, that the Pierce County Board of Supervisors authorize transfer of \$20,000.00 from the Federal Revenue Sharing to Maiden Rock Watershed account.

Dated this 28<sup>th</sup> day of October, 1980.

MARVIN CHRISTENSON

WILLIAM FALTEISEK

HOWARD CHRISTENSON

RAYMOND ANDERSON

LAWRENCE WEBER



RESOLUTION NO. 80-39

TITLE: STATE SENIOR CITIZEN CENTER GRANT

INTRODUCED BY THE PIERCE COUNTY BOARD OF SOCIAL SERVICES

To the Honorable Board of Supervisors of Pierce County Wisconsin

Gentlemen:

WHEREAS, the Wisconsin Department of Health & Social Services is authorized to make grants to counties of Wisconsin, in order to assist them in developing, expanding, or improving senior citizen facility programs for their older citizens, and

WHEREAS, \$10,991.00 is available in the State Senior Center Grant Program for Pierce County and,


WHEREAS, the county may subgrant the money to any city, village or township and,

WHEREAS, \$5,496.00 is included in the Pierce County Council on Aging 1981 Budget to provide one-half of the cash match requirement with the remaining one-half cash match being the responsibility of the sub-grantee,

THEREFORE, be it resolved that Yvonne Manore, Pierce County Senior Citizen Coordinator, be authorized to apply for the State Senior Center Grant funds and to be designated as the contact person.

Dated:

  
\_\_\_\_\_  
Roy Finley

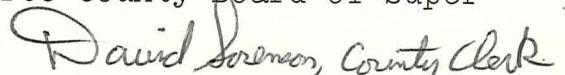
  
\_\_\_\_\_  
James Rusch

  
\_\_\_\_\_  
Iner Isaacson

  
\_\_\_\_\_  
Thomas Tyler

  
\_\_\_\_\_  
James VanWinkle

I, David Sorenson, County Clerk for Pierce County do hereby certify that the foregoing Resolution was adopted by the Pierce County Board of Supervisors on October 28th, 1980.

  
David Sorenson, County Clerk

Concerning Execution of a Quit Claim Deed from Pierce County to the Village of Ellsworth for street construction and sewer and water utilities, said conveyance concerning the following described real estate located in the Village of Ellsworth, Pierce County, Wisconsin, to-wit: The East 33 feet of Outlot One Hundred One (101) of the Assessor's Plat of the Village of Ellsworth.

Subject to the restrictions contained in that Warranty Deed dated August 27, 1970, recorded September 30, 1970, in Vol. 39 of Records, on page 687, as doc. no. 234340, Pierce County Register of Deeds Office.

TO THE HONORABLE BOARD OF SUPERVISORS  
PIERCE COUNTY, WISCONSIN

Gentlemen:

WHEREAS, it is in the best interests of Pierce County and the Village of Ellsworth to execute said Quit Claim Deed, and,

WHEREAS, There will be no loss to the County only benefit from the increase in property values of adjacent real estate,

THEREFORE, BE IT RESOLVED, that the Honorable Board of Supervisors for Pierce County does hereby authorize execution of a Quit Claim Deed granting all right, title, and interest to the parcel of land above described, said Quit Claim Deed to be executed by the Chairman of the Board of Supervisors and the County Clerk.

Dated this 28th day of October, 1980.

*Lawrence Weaver*  
*Arnold Odalen*  
*Reuben Hauschildt*  
*Clyde L. Wolf*

\_\_\_\_\_  
\_\_\_\_\_  
\_\_\_\_\_  
\_\_\_\_\_  
\_\_\_\_\_  
\_\_\_\_\_  
\_\_\_\_\_  
\_\_\_\_\_



THIS INDENTURE, Made this \_\_\_\_\_ day of September  
A. D., 1980, between Pierce County, a municipal cor-  
poration

\_\_\_\_\_ part y of the first part, and  
Village of Ellsworth, a municipal corporation

party \_\_\_\_\_ of the second part.

Witnesseth, That the said party \_\_\_\_\_ of the first part, for and in consideration  
of the sum of One dollar and other valuable consideration

RETURN TO

\_\_\_\_\_ Dollars, to it in hand paid by the said part y of the second part, the receipt whereof is hereby  
confessed and acknowledged, has given, granted, bargained, sold, remised, released, and quit-claimed, and by these presents do es give,  
grant, bargain, sell, remise, release and quit-claim unto the said part y of the second part, and to its heirs and assigns forever, the  
following described real estate, situated in the County of Pierce and State of Wisconsin, to-wit:

The East 33 feet of Outlot One Hundred One (101) of the  
Assessor's Plat of the Village of Ellsworth.

Subject to the restrictions contained in that warranty deed  
dated August 27, 1970, recorded September 30, 1970, in Vol.  
39 of Records, on page 687, as doc. no. 234340.

To Have and To Hold the same, together with all and singular the appurtenances and privileges thereunto belonging or in anywise  
thereunto appertaining, and all the estate, right, title, interest and claim whatsoever of the said party \_\_\_\_\_ of the first part, either in law or  
equity, either in possession or expectancy of, to the only proper use, benefit and behoof of the said part y of the second part, its  
\_\_\_\_\_ heirs and assigns forever.

In Witness Whereof, the said party \_\_\_\_\_ of the first part has hereunto set his hand \_\_\_\_\_ and seal \_\_\_\_\_ this \_\_\_\_\_  
day of September, A. D., 19 80. Pierce County, a municipal corp., By:

SIGNED AND SEALED IN PRESENCE OF

Lourence Kline

Jean Horde

\_\_\_\_\_ (SEAL)

David Sorenson  
Pierce County Clerk (SEAL)

\_\_\_\_\_ (SEAL)

Mervin Christensen  
Pierce Co. Chairman (SEAL)

STATE OF WISCONSIN,

Pierce County. } ss.

Personally came before me, this \_\_\_\_\_ day of September, A. D., 19 80,  
the above named \_\_\_\_\_

to me known to be the person \_\_\_\_\_ who executed the foregoing instrument and acknowledged the same.

NOTARY  
SEAL

This instrument drafted by

Robert L. Loberg

Notary Public Pierce County, Wis.

My Commission (Expires) (Is) \_\_\_\_\_

(Section 59.51 (1) of the Wisconsin Statutes provides that all instruments to be recorded shall have plainly printed or typewritten thereon the  
names of the grantors, grantees, witnesses and notary).



DELINQUENT PERSONAL PROPERTY TAX

TO THE HONORABLE BOARD OF SUPERVISORS  
FOR PIERCE COUNTY, WISCONSIN

GENTLEMEN:

I herewith report that no delinquent personal property tax of 1979 remains unpaid or uncollected on the records of the office of the County Treasurer of Pierce County, Wisconsin.

Respectfully submitted this 12<sup>th</sup> day of November, 1980.

Bev Lucente, Acting Pierce County Treasurer

Murray J. Christensen

Lawrence W. Warr

William Faltink

AUTHORIZATION TO PAY CLAIMS

TO THE HONORABLE BOARD OF SUPERVISORS  
FOR PIERCE COUNTY, WISCONSIN

GENTLEMEN:

BE IT HEREBY RESOLVED, that the County Clerk is hereby authorized and directed to issue and the County Treasurer to pay:

1. Claims allowed by the Board of Supervisors.
2. Claims duly audited by the Claims Committee.
3. Monthly salaries and hourly wages of the Courthouse employees.
4. Court orders and categorical aids.
5. Orders audited and certified by the Highway Committee.
6. All other claims and appropriations duly audited under the provisions of the Wisconsin Statutes.

Dated this 12<sup>th</sup> day of November, 1980.

Lawrence Weaver

Wm. J. H. H. H. H.

William H. H. H.

RESOLUTION NO. 80-44

CARE OF SOLDIERS GRAVES

TO THE HONORABLE BOARD OF SUPERVISORS  
FOR PIERCE COUNTY, WISCONSIN

GENTLEMEN:

WHEREAS, the Claims Committee has audited the claims for Care of Soldiers Graves and found them to be justified claims against Pierce County.

THEREFORE BE IT RESOLVED, that the County Clerk be authorized to pay the below schedule of claims:

<u>Name</u>	<u>No.of Graves</u>	<u>Amount Claimed</u>
Bay City Cemetery Assn. ....	44	\$ 132.00
Beldenville Cemetery Assn. ....	31	93.00
Bethel Mission Cemetery Assn. ....	17	51.00
Bethlehem Cemetery Assn. ....	12	36.00
Diamond Bluff Cemetery Assn. ....	38	114.00
Esdaille Lutheran Cemetery Assn. ....	5	15.00
Free Home Cemetery Assn. ....	14	42.00
Gilman Lutheran Cemetery Assn. ....	39	117.00
Greenwood Valley Cemetery Assn. ....	5	15.00
Hartland Methodist Cemetery Assn. ....	6	18.00
Hartland Presbyterian Cemetery Assn. ....	4	12.00
Maiden Rock Cemetery Assn. ....	44	132.00
Maple Grove Cemetery Assn. ....	115	345.00
Martell Lutheran Cemetery Assn. ....	17	51.00
Martell Methodist Cemetery Assn. ....	7	21.00
Mt. Olivet Cemetery Assn. ....	18	54.00
Mt. Tabor Cemetery Assn. ....	10	30.00
Oak Ridge Cemetery Assn. ....	15	45.00
Ono Cemetery Assn. ....	18	54.00
Our Saviors Cemetery Assn. ....	15	45.00
Our Ladies Cemetery Assn. ....	22	66.00
Pine Glen Cemetery Assn. ....	115	345.00
Plum City Cemetery Assn. ....	11	33.00
Plum City Catholic Cemetery Assn. ....	9	27.00
Poplar Hill Cemetery Assn. ....	86	258.00
Rush River Cemetery Assn. ....	46	138.00
Sacred Heart Cemetery Assn. ....	6	18.00



Salem Lutheran Cemetery Assn. ....	4	12.00
Spring Lake Cemetery Assn. ....	15	45.00
Spring Lake Lutheran Cemetery Assn. ....	13	39.00
South Rush River Cemetery Assn. ....	27	81.00
St. Bridgets Cemetery Assn. ....	37	111.00
St. Francis Cemetery Assn. ....	31	93.00
St. John's Lutheran Cemetery Assn., Spring Valley .....	51	153.00
St. John's Cemetery Assn., Oak Grove .....	2	6.00
St. Joseph's Cemetery Assn., Prescott .....	35	105.00
St. Joseph's Cemetery Assn., El Paso .....	13	39.00
St. Martin's Cemetery Assn. ....	27	81.00
St. Mary's Cemetery Assn., (Big River) .....	9	27.00
St. Nicholas Cemetery Assn. ....	5	15.00
St. Paul's Cemetery Assn. ....	28	84.00
Svea Cemetery Assn. ....	5	15.00
Thurston Hill Cemetery Assn. ....	15	45.00
Trenton Cemetery Assn. ....	32	96.00
Trimbelle Cemetery Assn. ....	40	120.00
		<hr/>
Total .....	1,158	3,474.00

Dated this 12<sup>th</sup> day of November, 1980.

Wm. J. Hutchinson

Lawrence Weaver

William F. Allen

ASSESSORS CLAIMS

TO THE HONORABLE BOARD OF SUPERVISORS  
FOR PIERCE COUNTY, WISCONSIN

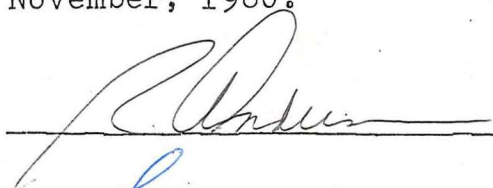
GENTLEMEN:

WHEREAS, the Claims Committee has audited the Assessors Claims for the listing of dogs and found them to be justified against Pierce County,

THEREFORE, BE IT RESOLVED, that the County Clerk be authorized to pay the schedule of claims:

	<u>No. of</u>	<u>Amount</u>
	<u>Dogs</u>	<u>Claimed</u>
-		
Richard Truttmann .....	137	\$ 20.55
John L. Brown .....	171	25.65
Lloyd E. Yanisch .....	90	13.50
Charles Bentley .....	224	33.60
Walter Schade .....	222	33.30
John L. Brown .....	49	7.35
Audrey Helmueller .....	240	36.00
Carol Sather .....	115	17.25
Dennis Gagnier .....	160	24.00
Joyce Falteisek .....	105	15.75
Caroline Schoeder .....	105	15.75
Ovid Sweeney .....	153	22.95
Lula Helmke .....	165	24.75
Virginia Oberg .....	196	29.40
John L. Brown .....	265	39.75
Miles Hoffman .....	141	21.15
John L. Brown .....	80	12.00
Bessie M. Birkel .....	180	27.00
Virginia M. Smith .....	71	10.65
-		
Miles Hoffman .....	30	4.50
Lennice Howard .....	99	14.85
Gordon Johnson .....	153	22.95
Dorothy Frederick .....	357	53.55
 Total .....	 3,508	 \$526.20

Dated this 12<sup>th</sup> day of November, 1980.







"Dog Damage Claims"

TO THE HONORABLE BOARD OF SUPERVISORS  
FOR PIERCE COUNTY, WISCONSIN

GENTLEMEN:

WHEREAS, the Claims Committee has audited the Dog Damage Claims against Pierce County,

THEREFORE, BE IT RESOLVED, that the County Clerk be authorized to pay the below schedule of claims:

<u>Claimant and Type of Animal</u>	<u>Amount Claimed</u>	<u>Amount Allowed</u>
David Ramirez, 18 chickens, each at \$3.00 .....	54.00	21.00
Jerome Maier, 29 sheep, each at \$75.00 .....	2,175.00	920.00
Willis Hildebrandt, 5 sheep, each at \$60.00 .....	300.00	130.00
Donald Murphy, 5 ewes .....	725.00	305.00
" 8 lambs .....	560.00	240.00
Donald Forss, 2 rabbits .....	20.00	9.00
Alvin Grass, 1 hereford .....	300.00	130.00
Lyndon Hove, 1 heifer .....	600.00	260.00
David Koehler, 3 ewes .....	150.00	70.00
Michael Traynor, 2 ewes .....	200.00	90.00
Donald Kiefer, 5 ewes .....	450.00	190.00
Stan Denzer, 6 ewes .....	480.00	200.00
Richard Schommer, 1 heifer .....	700.00	300.00
Dale Kinneman, 3 rabbits .....	12.00	5.00
" 2 chickens .....	7.00	3.00
Total Claims .....	\$6,733.00	\$2,874.00

Dated this 12<sup>th</sup> day of November, 1980.

Laurena Wauer

Howard B. Christensen

R. Anderson



RESOLUTION 80-47

PIERCE COUNTY PRIME FARMLANDS

TO THE HONORABLE BOARD OF SUPERVISORS  
FOR PIERCE COUNTY: WISCONSIN  
GENTLEMEN:

WHEREAS, Pierce County's most productive soils will be needed in future years to provide food and fiber to our nation's population, and

WHEREAS, the identification and preservation of prime farmlands must begin at the local level, and

WHEREAS, local land use planning efforts are being conducted with Townships in Pierce County to assist them to utilize soils for their best use to meet the needs of the people of Pierce County, and

WHEREAS, The U.S. Soil Conservation Service has developed an Important Farmlands Map designating those lands of the County having the greatest productivity potential, and

WHEREAS, the Pierce County U.S.D.A. Advisory Council consisting of Bernard Drewiske and Ed Haas , Extension Service; John Erickson, Farmers Home Administration; Earl Anderson, Agricultural Stabilization and Conservation Service; Louis Barber, Soil Conservation Service; and Jon Krauss, Soil and Water Conservation District, have recommended to the Pierce County Soil and Water Conservation District that Pierce County officially designate those lands it considers to be "PRIME FARMLANDS",

NOW, THEREFORE, BE IT RESOLVED THAT Pierce County Board of Supervisors designate as the "Prime Farmlands of Pierce County" those soil mapping units accompanying this Resolution and shown on the Pierce County Important Farmlands Map as "Prime Farmland" (green), and "Additional Farmland of State Wide Importance" (yellow). Further explanation of the attached soil mapping units can be found in the Pierce County Soil Survey.

BE IT FURTHER RESOLVED THAT the spirit of this resolution be carried out by all citizens, organizations, businesses, and agencies having the opportunity to affect the preservation of these Prime Farmlands for the growing of food and fiber.

BE IT FURTHER RESOLVED that a copy of this Resolution and the Important Farmland Map be sent to all Pierce County Townships, Villages, and Cities, encouraging the adoption of land use ordinances within the spirit of this Resolution.

BE IT FURTHER RESOLVED that a copy of this resolution and the Important Farmland Map be sent to the following:

Pierce County	Farm Bureau
"	" Farmers Union
"	" National Farmers Organization
"	" Democratic Party
"	" Republican Party
"	" Zoning Office
"	" Extension Service
"	" ASCS
"	" FM HA
"	" SCS
"	" Highway Department
"	" VO AG Instructors

Pierce-Pepin Electric Coop  
Mississippi River Planning Comm  
Minn-Wis Boundary Waters Commission  
Wis Department of Natural Resources (Kinnic State Park)  
Pierce Co Real Estate Agents  
" " Engineering Firms  
" " Banks and Lending Institutions  
Univ of Wisc. River Falls, Plant & Earth Science Dept  
Wis Bd of Soil & Water Conservation Districts  
Pierce Co Libraries  
James Harsdorf  
Robert Harer  
Jules Berndt  
Steve Gunderson

Sam McCordle  
Kenneth Anderson  
Francis Coulson  
Wm J. Christensen



PIERCE COUNTY PRIME FARMLANDS

SOIL MAPPING UNITS

Ae	Alluvial land, loamy, nearly level
Ag	Alluvial land, loamy, gently sloping
AmA	Almena silt loam, 0 to 2 percent slopes
AmB	Almena silt loam, 2 to 6 percent slopes
AmB2	Almena silt loam, 2 to 6 percent slopes, moderately eroded
AnA	Antigo silt loam, 0 to 2 percent slopes
AnB	Antigo silt loam, 2 to 6 percent slopes
AnB2	Antigo silt loam, 2 to 6 percent slopes, moderately eroded
Ar	Arenzville silt loam
AsB	Arland loam, 2 to 6 percent slopes
AsC2	Arland loam, 6 to 12 percent slopes, moderately eroded
Au	Auburndale silt loam
BrA	Burkhardt loam, 0 to 2 percent slopes
BuA	Burkhardt sandy loam, 0 to 2 percent slopes
BuB	Burkhardt sandy loam, 2 to 6 percent slopes
CaA	Chaseburg silt loam, 0 to 2 percent slopes
CaB	Chaseburg silt loam, 2 to 6 percent slopes
ChB	Chetek sandy loam, 2 to 6 percent slopes
Cl	Clyde silt loam
DaA	Dakota loam, 0 to 2 percent slopes
DaB	Dakota loam, 2 to 6 percent slopes
DaC2	Dakota loam, 6 to 12 percent slopes, moderately eroded
DbA	Dakota loam, loamy substratum, 0 to 2 percent slopes
DbB	Dakota loam, loamy substratum, 2 to 6 percent slopes
DcA	Dakota loam, rock substratum, 0 to 2 percent slopes
DcB2	Dakota loam, rock substratum, 2 to 6 percent slopes, eroded
DdA	Dakota sandy loam, 0 to 2 percent slopes
DdB	Dakota sandy loam, 2 to 6 percent slopes
DeA	Derinda silt loam, 0 to 2 percent slopes
DeB	Derinda silt loam, 2 to 6 percent slopes
DeB2	Derinda silt loam, 2 to 6 percent slopes, moderately eroded
DeC	Derinda silt loam, 6 to 12 percent slopes
DeC2	Derinda silt loam, 6 to 12 percent slopes, moderately eroded
DfC2	Derinda silt loam, acid variant, 6 to 12 percent slopes, moderately eroded
DkB2	Dickinson fine sandy loam, 2 to 6 percent slopes, moderately eroded
DoB	Downs silt loam, 2 to 6 percent slopes
DoB2	Downs silt loam, 2 to 6 percent slopes, moderately eroded
DoC2	Downs silt loam, 6 to 12 percent slopes, moderately eroded
DsA	Dubuque silt loam, 0 to 2 percent slopes
DsB	Dubuque silt loam, 2 to 6 percent slopes
DsB2	Dubuque silt loam, 2 to 6 percent slopes, moderately eroded
DsC	Dubuque silt loam, 6 to 12 percent slopes
DsC2	Dubuque silt loam, 6 to 12 percent slopes, moderately eroded
DtB3	Dubuque soils, 2 to 6 percent slopes, severely eroded
DuB	Dunbarton silt loam, 2 to 6 percent slopes
DuB2	Dunbarton silt loam, 2 to 6 percent slopes, moderately eroded
FaA	Fayette silt loam, benches, 0 to 2 percent slopes
FaB	Fayette silt loam, benches, 2 to 6 percent slopes
FaC2	Fayette silt loam, benches, 6 to 12 percent slopes, moderately eroded
FlB	Floyd silt loam, 2 to 6 percent slopes



## SOIL MAPPING UNITS (Cont'd.)

FnB2	Freeon silt loam, 2 to 6 percent slopes, moderately eroded
FnC2	Freeon silt loam, 6 to 12 percent slopes, moderately eroded
Fr	Freer silt loam
GaB	Gale silt loam, 2 to 6 percent slopes
GaB2	Gale silt loam, 2 to 6 percent slopes, moderately eroded
GaC2	Gale silt loam, 6 to 12 percent slopes, eroded
HaA	Halder loam, 0 to 2 percent slopes
HdA	Halder loam, sandy substratum, 0 to 3 percent slopes
HeB2	Hesch fine sandy loam, loamy substratum, 2 to 6% slopes, moderately eroded
HeC2	Hesch fine sandy loam, loamy substratum 6 to 12% slopes, moderately eroded
HlB	Hesch loam, loamy substratum, 2 to 6 percent slopes
HlB2	Hesch loam, loamy substratum, 2 to 6 percent slopes, moderately eroded
HlC2	Hesch loam, loamy substratum, 6 to 12 percent slopes, moderately eroded
HmC2	Hixton fine sandy loam, 6 to 12 percent slopes, moderately eroded
HnB	Hixton fine sandy loam, loamy substratum, 2 to 6 percent slopes
HnB2	Hixton fine sandy loam, loamy substratum, 2 to 6% slopes, moderately eroded
HnC2	Hixton fine sandy loam, loamy substratum, 6 to 12% slopes moderately eroded
HtB	Hixton loam, loamy substratum, 2 to 6 percent slopes
HtC2	Hixton loam, loamy substratum, 6 to 12 percent slopes, moderately eroded
LaB2	Lamont very fine sandy loam, 2 to 6 percent slopes, moderately eroded
LaC2	Lamont very fine sandy loam, 6 to 12 percent slopes, moderately eroded
LcA	Lawler loam, 0 to 3 percent slopes
LwA	Lawler silt loam, 0 to 2 percent slopes
LwB	Lawler silt loam, 2 to 6 percent slopes
MdA	Meridian loam, 0 to 2 percent slopes
MdB	Meridian loam, 2 to 6 percent slopes
OmA	Onamia loam, 0 to 2 percent slopes
OmB	Onamia loam, 2 to 6 percent slopes
OmB2	Onamia loam, 2 to 6 percent slopes, moderately eroded
OmC2	Onamia loam, 6 to 12 percent slopes, moderately eroded
OnB	Onamia sandy loam, 2 to 6 percent slopes
OnC2	Onamia sandy loam, 6 to 12 percent slopes, moderately eroded
Or	Orion silt loam
OsA	Ostrander silt loam, 0 to 2 percent slopes
OsB	Ostrander silt loam, 2 to 6 percent slopes
OsB2	Ostrander silt loam, 2 to 6 percent slopes, moderately eroded
OsC2	Ostrander silt loam, 6 to 12 percent slopes, moderately eroded
OtB	Otterholt silt loam, 2 to 6 percent slopes
OtB2	Otterholt silt loam, 2 to 6 percent slopes, moderately eroded
OtC	Otterholt silt loam, 6 to 12 percent slopes
OtC2	Otterholt silt loam, 6 to 12 percent slopes, moderately eroded
OtC3	Otterholt silt loam, 6 to 12 percent slopes, severely eroded
PoA	Port Byron silt loam, 0 to 2 percent slopes
PoB	Port Byron silt loam, 2 to 6 percent slopes
PoC2	Port Byron Silt loam, 6 to 12 percent slopes, moderately eroded
RaB	Racine silt loam, 2 to 6 percent slopes
RaB2	Racine silt loam, 2 to 6 percent slopes, moderately eroded
RaC2	Racine silt loam, 6 to 12 percent slopes, moderately eroded
ReA	Renova silt loam, 0 to 2 percent slopes
ReB	Renova silt loam, 2 to 6 percent slopes
ReB2	Renova silt loam, 2 to 6 percent slopes, moderately eroded
ReC	Renova silt loam, 6 to 12 percent slopes
ReC2	Renova silt loam, 6 to 12 percent slopes, moderately eroded
ReC3	Renova silt loam, 6 to 12 percent slopes, severely eroded



PIERCE COUNTY PRIME FARMLANDS

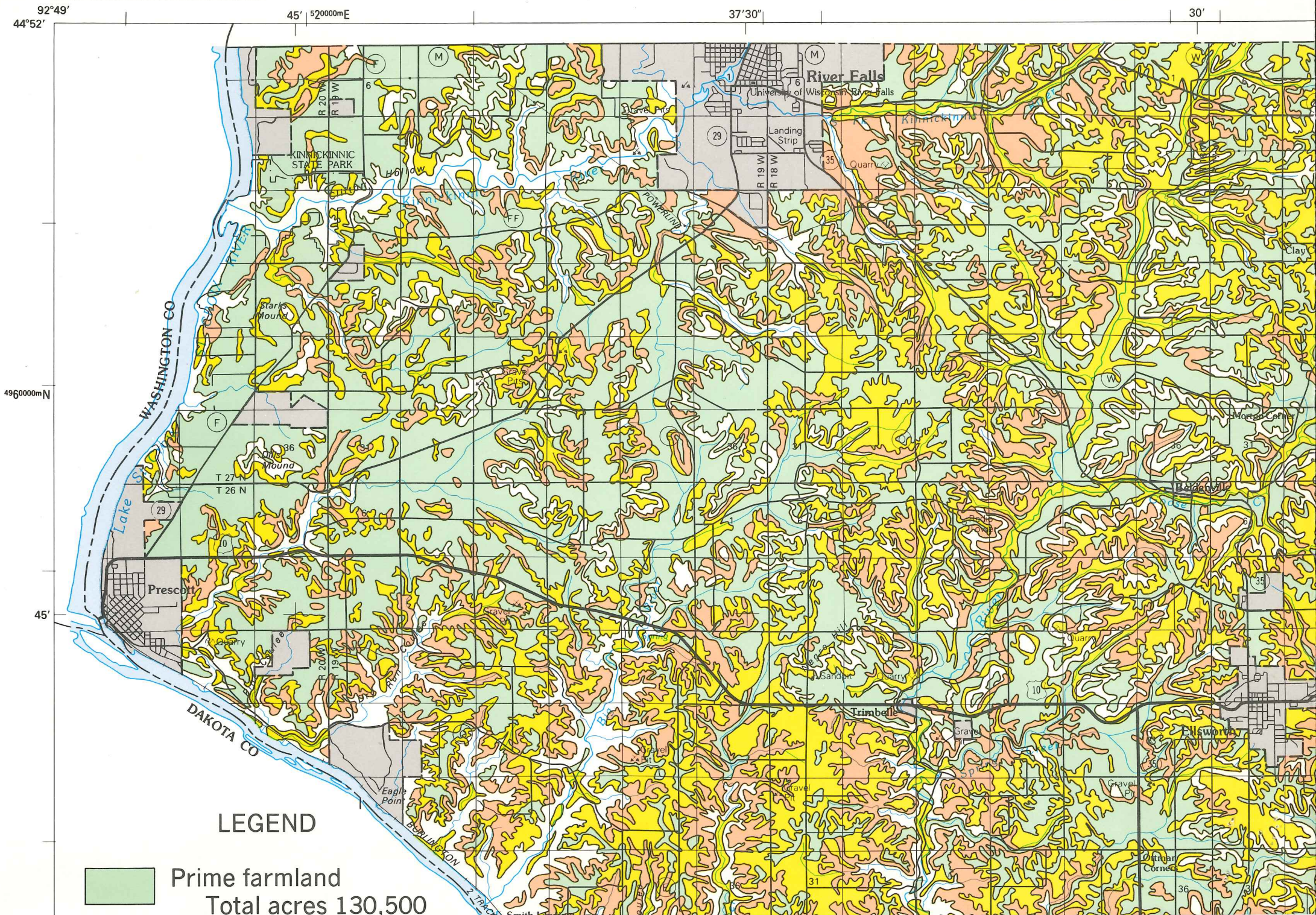
SOIL MAPPING UNITS (Cont'd.)

RfB2	Renova fine sandy loam, sandy variant, 2 to 6 percent slopes, eroded
RfC2	Renova fine sandy loam, sandy variant, 6 to 12 percent slopes, eroded
RoB	Rockton complex, 2 to 6 percent slopes
RoC2	Rockton complex, 6 to 12 percent slopes, moderately eroded
RtA	Rozetta silt loam, benches, 0 to 2 percent slopes
RtB	Rozetta silt loam, benches, 2 to 6 percent slopes
Sa	Sable silt loam
SbB	Santiago silt loam, 2 to 6 percent slopes
SbB2	Santiago silt loam, 2 to 6 percent slopes, moderately eroded
SbC2	Santiago silt loam, 6 to 12 percent slopes, moderately eroded
SgA	Sargeant silt loam, 0 to 2 percent slopes
SgB	Sargeant silt loam, 2 to 6 percent slopes
SgB2	Sargeant silt loam, 2 to 6 percent slopes, moderately eroded
SgC	Sargeant silt loam, 6 to 12 percent slopes
SgC2	Sargeant silt loam, 6 to 12 percent slopes, moderately eroded
ShC	Schapville silt loam, 6 to 12 percent slopes
ShC2	Schapville silt loam, 6 to 12 percent slopes, moderately eroded
SkB2	Schapville silt loam, wet subsoil variant 2 to 6% slopes, eroded
SnB	Seaton silt loam, 2 to 6 percent slopes
SnB2	Seaton silt loam, 2 to 6 percent slopes, moderately eroded
SnC	Seaton silt loam, 6 to 12 percent slopes
SnC2	Seaton silt loam, 6 to 12 percent slopes, moderately eroded
SnC3	Seaton silt loam, 6 to 12 percent slopes, severely eroded
SoA	Sogn-Rockton loams, 0 to 2 percent slopes
SoB	Sogn-Rockton loams, 2 to 6 percent slopes
SrA	Spencer silt loam, 0 to 2 percent slopes
SrB	Spencer silt loam, 2 to 6 percent slopes
SrB2	Spencer silt loam, 2 to 6 percent slopes, moderately eroded
SrC2	Spencer silt loam, 6 to 12 percent slopes, moderately eroded
SuA	Stronghurst silt loam, benches, 0 to 2 percent slopes
TeA	Tell silt loam, 0 to 2 percent slopes
TeB2	Tell silt loam, 2 to 6 percent slopes, eroded
Tx	Terril loam
VaB	Vlasaty silt loam, 2 to 6 percent slopes
VaB2	Vlasaty silt loam, 2 to 6 percent slopes, moderately eroded
VaC	Vlasaty silt loam, 6 to 12 percent slopes
VaC2	Vlasaty silt loam, 6 to 12 percent slopes, moderately eroded
WaA	Waukegan silt loam, 0 to 2 percent slopes
WaB	Waukegan silt loam, 2 to 6 percent slopes
WhA	Whalan silt loam, 0 to 2 percent slopes
WhB	Whalan silt loam, 2 to 6 percent slopes
WhB2	Whalan silt loam, 2 to 6 percent slopes, moderately eroded
WhC	Whalan silt loam, 6 to 12 percent slopes
WhC2	Whalan silt loam, 6 to 12 percent slopes, moderately eroded
Wn	Worthen silt loam
WoB	Wykoff loam, 2 to 6 percent slopes
WoB2	Wykoff loam, 2 to 6 percent slopes, moderately eroded
WoC	Wykoff loam, 6 to 12 percent slopes
WoC2	Wykoff loam, 6 to 12 percent slopes, moderately eroded
WoC3	Wykoff loam, 6 to 12 percent slopes, severely eroded
WsB	Wykoff silt loam, 2 to 6 percent slopes
WsB2	Wykoff silt loam, 2 to 6 percent slopes, moderately eroded
WsC2	Wykoff silt loam, 6 to 12 percent slopes, eroded



U.S. DEPARTMENT OF AGRICULTURE  
SOIL CONSERVATION SERVICE

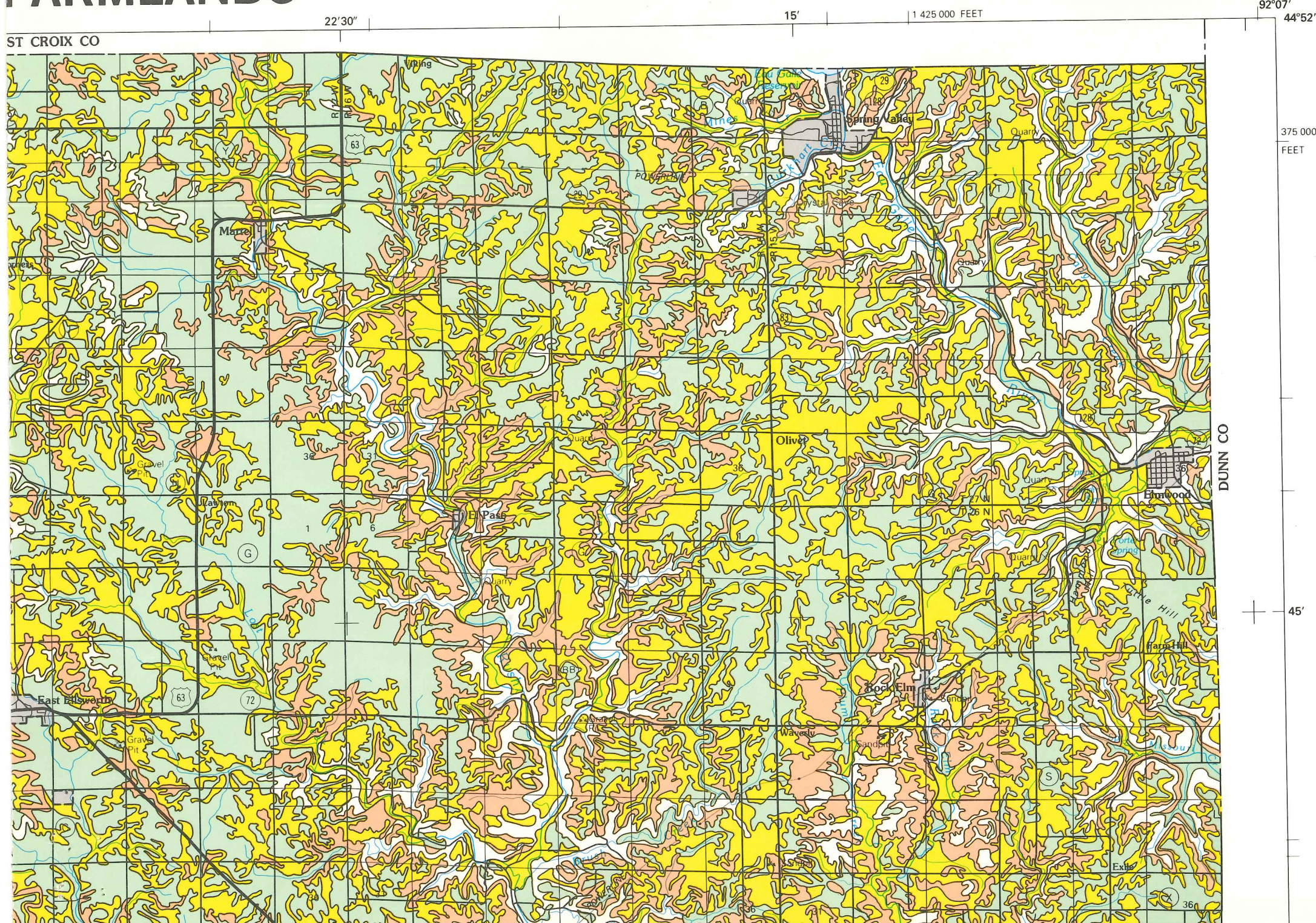
IMPORTANT





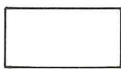
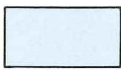



# FARMLANDS

# PIERCE COUNTY, WISCONSIN





-  Additional farmland of statewide importance  
Total acres 121,800
-  Additional farmland of local importance  
Total acres 70,300
-  Other land
-  Water areas
-  Approximate limits of urban growth

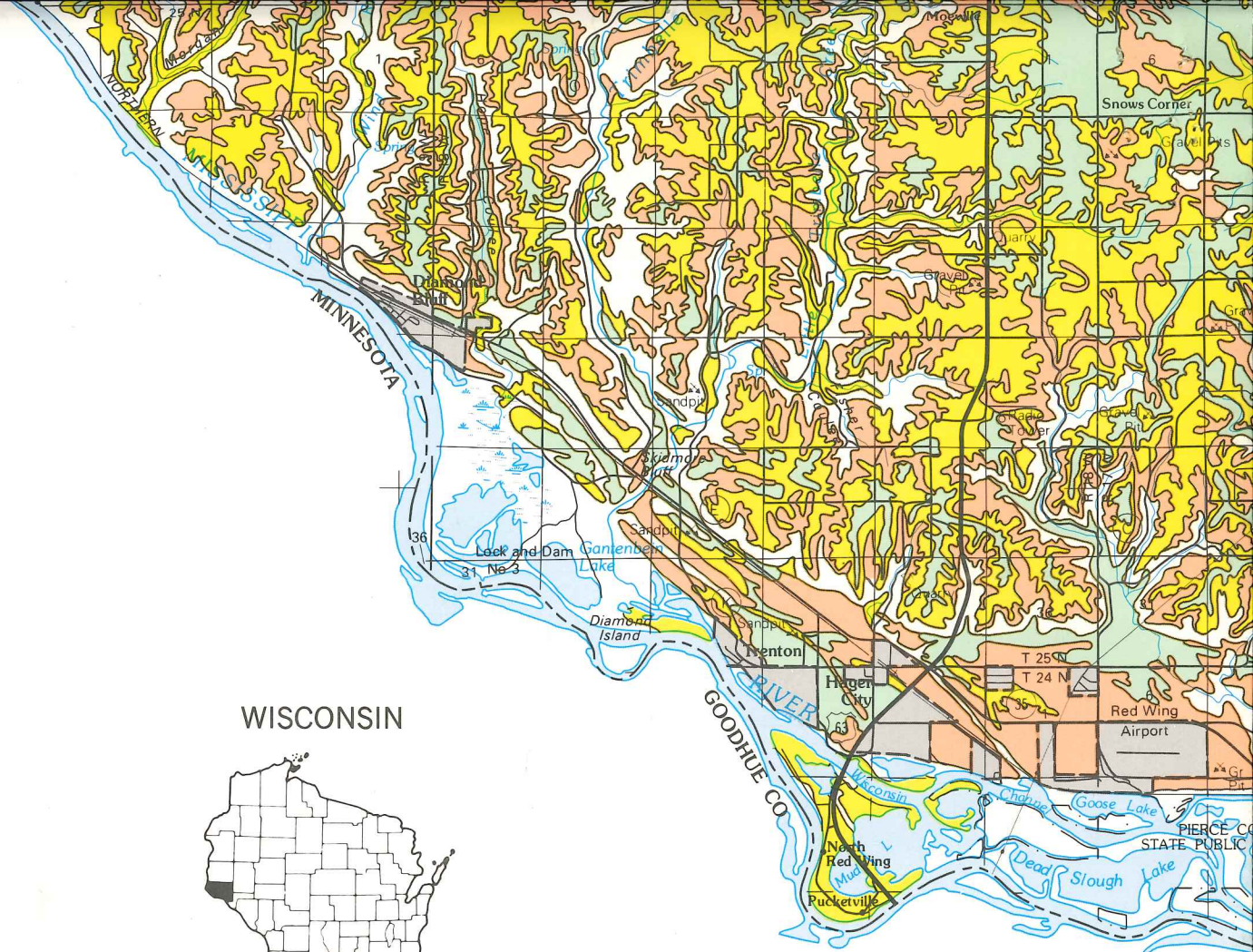
*This map gives an overview of important farmland. It was made by overlaying an interpretation from the published soil survey map to a base showing roads, boundaries, and names. This procedure may result in slight mismatching of lines and features in certain areas because the scales and dates of the two maps used were different.*

*For specific locations of soil map units that may qualify as important farmland use the published soil survey for the county. If the publication does not specify which map units are important farmlands, the state or local office of the Soil Conservation Service for that area can furnish you a list of important farmland map units.*

*A soil survey publication can be obtained from the appropriate state or local office of the Soil Conservation Service, the county agent, or the congressman for that district. Many libraries keep published soil surveys on file for reference.*

USDA-SCS-LINCOLN, NEBR. 1980

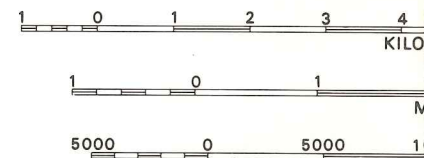
*Base Source: USGS 1:50,000 county base map dated 1978 Projection and 10,000-meter grid ticks, zone 15, Universal Transverse Mercator. 25,000-foot grid ticks based on Wisconsin coordinate system, central zone. 1927 North American datum.*



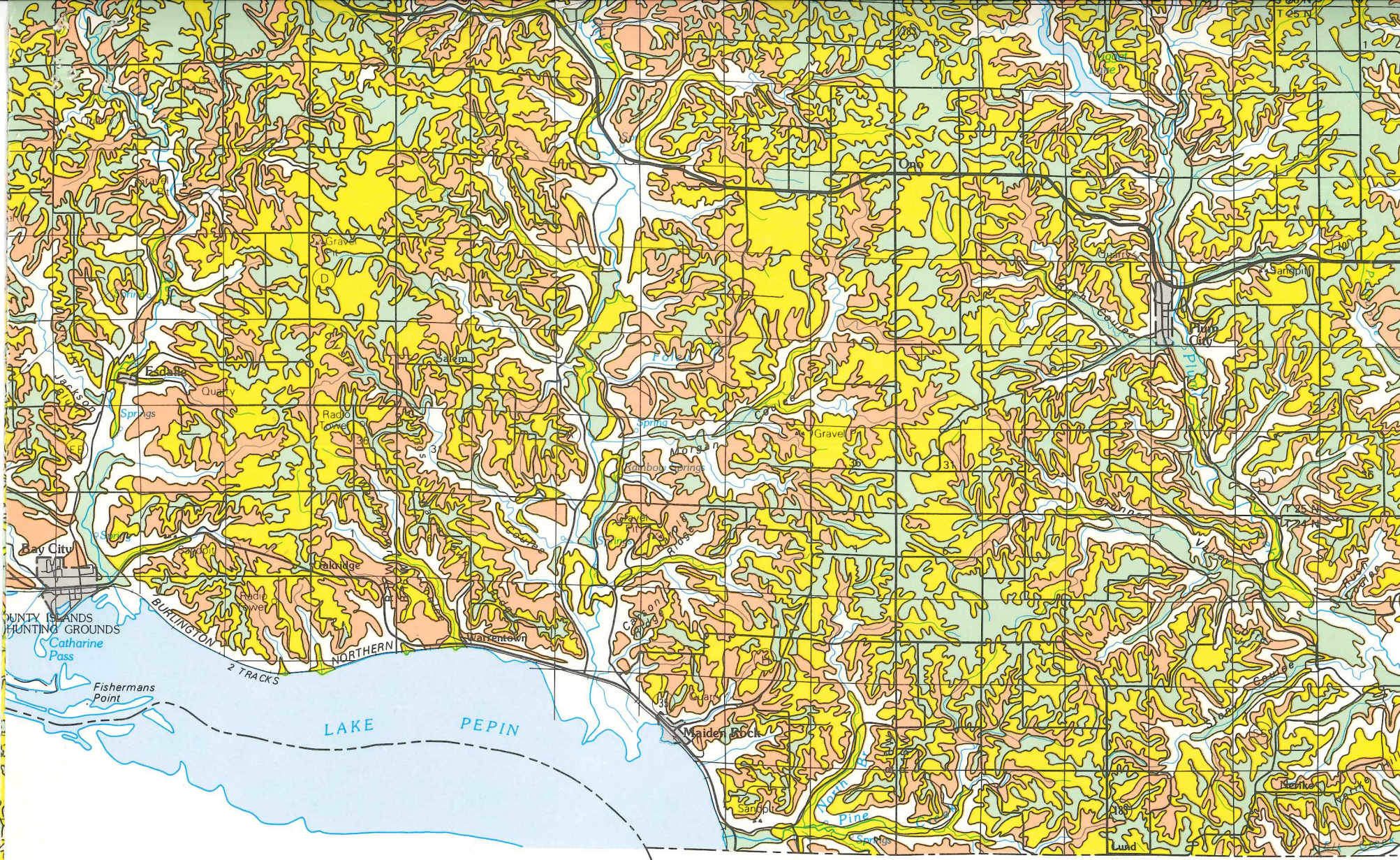
SHEET 1 OF 1

NORTH

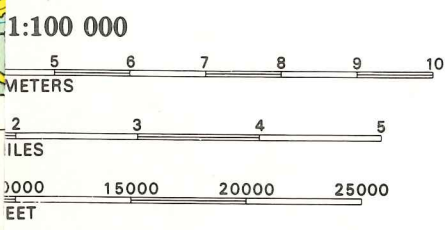
SCALE







37'30"  
4940000mN  
PEPIN CO  
44°32'  
92°07'



MARCH 1980  
5,R-37,804

Interpretations derived from soil survey published in 1968.



RESOLUTION NO. 80-48

PURCHASE OF HIGHWAY EQUIPMENT  
PIERCE COUNTY

TO THE HONORABLE BOARD OF SUPERVISORS FOR PIERCE COUNTY, WISCONSIN:

GENTLEMEN:

WHEREAS, for the construction and maintenance of highways, including the removal and control of snow and ice, it becomes necessary from time to time to purchase equipment, the nature of and necessity for which cannot be accurately anticipated,

THEREFORE BE IT RESOLVED, that the County Highway Committee is hereby authorized, pursuant to Section 83.015(2) of the Statutes, to purchase without further authority, and to the extent that revolving funds accumulated for such purpose or appropriations made for such purpose are available, such highway equipment as they deem necessary to properly carry on the work, and to trade or sell such old equipment as may be considered to be for the best interests of the County,

PROVIDED that no one complete unit of equipment of a value exceeding Seventy-five thousand and no/100 Dollars (\$75,000.00) shall be purchased without further authority of the County Board.

Presented this 12th day of November, 1980.

Lawrence Weber  
William Galtersich  
Clyde L. Wolf  
Arnold O. Delen  
Reuben Hauscholtz  
Pierce County Highway Committee



RESOLUTION NO. 80-49

PROVIDING FOR THE ADVANCE OR TRANSFER  
OF CONSTRUCTION FUNDS IN PIERCE COUNTY

TO THE HONORABLE BOARD OF SUPERVISORS FOR PIERCE COUNTY, WISCONSIN:

GENTLEMEN:

WHEREAS, Section 84.03(5), Wisconsin Statutes, provides that the State Highway Commission and County Board, or a County Highway Committee when authorized by the County Board, may agree upon the advance of one or more future years' allotments for such County under Section 84.03(3), to be expended on selected improvements on state trunk highways or connecting streets within such County to the extent so agreed, and

WHEREAS, occasions frequently arise when it is necessary or desirable to provide for the advance, allocation, or transfer of construction funds to or between previously authorized or additionally needed construction improvements on state trunk highways or connecting streets in this County,

THEREFORE, in order to provide for promptly making available the funds necessary for such improvements and to avoid the delay and expense incident to calling a special meeting of this Board for such purpose,

BE IT RESOLVED, that the State Highway Commission be and is hereby petitioned to advance pursuant to Section 84.03(5), Wisconsin Statutes, upon the filing of a request therefor by the County Highway Committee of this County, which said Committee is hereby authorized to file, such sums as may be required and are not otherwise available for any such previously authorized or additionally needed construction improvements in this County, with the understanding that the amounts thus advanced will be deducted from future state allotments for state trunk highway construction in this County under Section 84.03(3) of the Statutes, and

BE IT FURTHER RESOLVED, that the State Highway Commission be and is hereby petitioned, upon the filing of a request therefor by the County Highway Committee of this County, which said Committee is hereby authorized to file, to transfer to or between any such previously authorized or additionally needed construction improvements in this County, any funds allotted by the State under the provisions of Section 84.03(3), Wisconsin Statutes, and previously allocated to any other improvement or remaining unallocated in reserve.

Presented this 12th day of November, 1980.

Laurence W. Wacker  
William J. Tattum  
Clyde H. Wolf  
Arnold K. Odolen  
Benjamin H. Hauscholtz  
Pierce County Highway Committee

RESOLUTION NO. 80-50

IMPROVEMENT OF COUNTY TRUNK BRIDGES

TO THE HONORABLE BOARD OF SUPERVISORS FOR PIERCE COUNTY, WISCONSIN:

GENTLEMEN:

WHEREAS, your Road and Bridge Committee has this past September 12th and 15th driven over the various county highways and inspected the county bridges which were improved during 1980 and also those under consideration for improvement during the 1981 season; and

WHEREAS, after discussing and evaluating the various county bridges, they voted to present the following program together with the cost estimated for 1981:

C.T.H. "AA" - Town of Maiden Rock - Pine Creek Bridge - 1 1/2 mile NE of S.T.H. 35	\$ 24,000.00
C.T.H. "FF" - Town of River Falls - Birch Cliff Bridge - 1/4 mile W of S.T.H. 29	\$ 32,000.00
C.T.H. "N" - Town of El Paso - Christopherson Bridge - install extra culvert by Randy Christopherson's	\$ 6,200.00
Guard Rail on Various Bridges	\$ 16,000.00
Total Cost of County's Share	\$ 78,200.00

SO BE IT RESOLVED, that the County Board of Supervisors of Pierce County hereby authorize the Highway Committee to complete the above program during the 1981 season.

Presented this 12th day of November, 1980

*Lawrence Weaver*  
*William Faltusich*  
*Charles J. Wolf*  
*Deben H. Schildt*  
*Arnold Odalen*

*Don Mc Carle*  
Pierce County Road & Bridge Committee



RESOLUTION NO. 80-51

IMPROVEMENT OF COUNTY TRUNK HIGHWAYS

TO THE HONORABLE BOARD OF SUPERVISORS FOR PIERCE COUNTY, WISCONSIN:

GENTLEMEN:

WHEREAS, your Road and Bridge Committee has this past September 12th and 15th driven over the various county highways which were improved during the 1980 season and also those under consideration for improvement during the 1981 season; and

WHEREAS, after discussing and evaluating the various county highways, they voted to present the following program together with the cost estimated for 1981:

C.T.H. "A" - Town of Salem - 2.3 mile - Start 2.0 mile North of S.T.H. 35 North	
Blacktop	\$ 62,617.50
Shouldering	10,120.00
	<u>72,737.50</u>
C.T.H. "BB" - Town of El Paso - 1.0 mile - Start S.T.H. 72	
Blacktop	\$ 27,225.00
Shouldering	4,400.00
	<u>31,625.00</u>
C.T.H. "BB" - Town of Gilman - 1.0 mile - Start <del>Rollison's</del> <i>Rollison's</i> Pit North	
Blacktop	\$ 27,225.00
Shouldering	4,400.00
	<u>31,625.00</u>
C.T.H. "BB" - Town of Gilman - 1.3 mile - Start S.T.H. 29 South	
Blacktop	\$ 35,392.50
Shouldering	5,720.00
	<u>41,112.50</u>
C.T.H. "C" - Town of Ellsworth - 1.0 mile - Start U.S.H. 10	
Blacktop	\$ 27,225.00
Shouldering	4,400.00
	<u>31,625.00</u>
C.T.H. "D" - Town of Hartland - 1.3 mile - Start at Francis Hager's South	
Blacktop	\$ 35,392.50
Shouldering	5,720.00
	<u>41,112.50</u>
C.T.H. "E" - Town of Oak Grove - 2.5 mile - Start U.S.H. 10 North to Town Line	
Blacktop	\$ 68,062.50
Shouldering	11,000.00
	<u>79,062.50</u>
C.T.H. "E" - Town of River Falls - 1.0 mile - Start at South Town Line <i>going north</i>	
Blacktop	\$ 27,225.00
Shouldering	4,400.00
	<u>31,625.00</u>
C.T.H. "EE" - Town of Hartland - 1.5 mile - Start at Bridge East of Esdaile	
Blacktop	\$ 40,837.50
Shouldering	6,600.00
	<u>47,437.50</u>
C.T.H. "K" - Town of Trenton - 0.5 mile - Start at Wayne Anderson's North	
Blacktop	\$ 13,612.50
Shouldering	2,200.00
	<u>15,812.50</u>

C.T.H. "00" - Town of Diamond Bluff - 1.3 mile - Start at C.T.H. "E"		
	Blacktop	\$ 35,392.50
	Shouldering	5,720.00
		<u>41,112.50</u>
C.T.H. "P" - Town of Spring Lake - 1.8 mile - Start Village of Elmwood Limits -		
	Go North to Top of Hill	
	Blacktop	\$ 49,005.00
	Shouldering	7,920.00
		<u>56,925.00</u>
C.T.H. "P" - Village of Elmwood - 0.7 mile - Start S.T.H. 72 North to Village Limits		
	Blacktop	\$ 20,097.00
	Shouldering	3,080.00
		<u>23,177.00</u>
C.T.H. "S" - Town of Rock Elm - 0.5 mile - Start at Exile Store South		
	Blacktop	\$ 13,612.50
	Shouldering	2,200.00
		<u>15,812.50</u>
C.T.H. "SS" - Town of Maiden Rock - 1.6 mile - Start .3 mile East of S.T.H. 183 East		
	Blacktop	\$ 43,560.00
	Shouldering	7,040.00
		<u>50,600.00</u>
C.T.H. "BB" - Town of Gilman - 2.2 mile - Start S.T.H. 29 North		
	Sealcoating	\$ 12,210.00
C.T.H. "J" - Town of Martell - 2.0 mile - Start U.S.H. 63 West		
	Sealcoating	\$ 11,100.00
C.T.H. "MM" - Town of Clifton - 4.3 mile		
	Sealcoating	\$ 23,865.00
C.T.H. "00" - Town of Diamond Bluff - 2.0 mile - Start 1.3 mile North of C.T.H. "E"		
	North to Town Line	
	Sealcoating	\$ 11,100.00
C.T.H. "00" - Town of Trimbelle - 3.5 mile - Start at South Town Line North to		
	U.S.H. 10	
	Sealcoating	\$ 19,425.00
C.T.H. "S" - Town of Maiden Rock - 3.6 mile - Start S.T.H. 183 West to Village of		
	Maiden Rock	
	Sealcoating	\$ 19,980.00
C.T.H. "S" - Town of Union - 3.5 mile - Start S.T.H. 183 East to Junction of		
	C.T.H.'s "S" and "U"	
	Sealcoating	\$ 19,425.00
C.T.H. "S" - Village of Maiden Rock - 0.4 mile		
	Sealcoating	\$ 2,220.00
C.T.H. "U" - Town of Union - 3.0 mile - Start South Village of Plum City Line South		
	Sealcoating	\$ 16,650.00
C.T.H. "BB" - Town of El Paso - 0.8 mile - From S.T.H. 72 North		
	(Elevation of hill)	\$ 9,300.00
C.T.H. "FF" - Town of Clifton - Guard Rail by Angel Hill School		\$ 9,800.00
C.T.H. "FF" - Town of River Falls - 1.0 mile - Start S.T.H. 29 West		\$ 96,000.00
C.T.H. "J" - Town of Martell - 0.5 mile - By Gaylord Falde's		\$ 1,000.00
C.T.H. "K" - Town of Trenton - 0.3 mile - Replace Bridge with Culvert by Wayne		
	Anderson's	\$ 36,000.00
C.T.H. "K" - Town of Trimbelle - 0.1 mile - Replace Bridge with Culvert by William		
	Matthew's	\$ 21,000.00



C.T.H. "N" - Town of Ellsworth - 0.5 mile - Widen Road from Lawton West	\$ 11,000.00
C.T.H. "O" - Town of Diamond Bluff - Widen Road from Alleho School North	\$ 16,000.00
C.T.H. "P" - Town of Spring Lake - Guard Rail on Krammer's Hill	\$ 26,000.00
C.T.H. "S" - Town of Rock & Union - 1.0 mile - Start at Exile & Go South	\$ 42,550.00
C.T.H. "VV" - Town of Trenton - By Christiansen Quarry	\$ 33,000.00
C.T.H. "W" - Town of River Falls (Section 12) - 1.0 mile	\$ 94,000.00
New Shop Storage Area - Breaker Rock (15,000 c.y. @ \$5.20)	\$ 78,000.00
Crushed Rock (7,500 c.y. @ \$6.50)	48,750.00
	<u>126,750.00</u>
Rip Rap in Various Parts of County	\$ 15,000.00
Grand Total	\$ 1,284,777.00

SO BE IT RESOLVED, that the County Board of Supervisors of Pierce County hereby authorize the Highway Committee to complete the above program during the 1981 season.

Presented this 12th day of November, 1980.

William Faltis  
Lawrence Weaver  
Arnold Odalen

Charles L. Wolf  
Barbara Hauschild  
Dan McCardle

Pierce County Road & Bridge Committee

RESOLUTION NO. 80-52

COUNTY AID CONSTRUCTION AND MAINTENANCE  
DURING THE CALENDAR YEAR 1981

TO THE HONORABLE BOARD OF SUPERVISORS FOR PIERCE COUNTY, WISCONSIN:

GENTLEMEN:

SECTION I. The County Board of Supervisors of Pierce County, Wisconsin, regularly assembled, does hereby ordain that such funds as may be made available to the County for highway work in the year 1981 under the provisions of Section 20.395 and Chapter 83 of the Statutes, and the additional sums herein appropriated, shall be expended as hereinafter set forth:

SECTION II. COUNTY TRUNK HIGHWAY ALLOTMENT. WHEREAS the Division of Highways has notified the County Clerk that a sum of money estimated to be Three hundred ninety-eight thousand nine hundred sixteen and no/100 Dollars (\$398,916.00) will become available at the end of the fiscal year under the provisions of Sections 83.10 and 20.395 (1) (qa) & (qb) of the Statutes, for the county trunk highway system in the County, but the actual amount will not be known until the close of the fiscal year ending next June 30th.

BE IT RESOLVED that the County Highway Committee is authorized and directed to expend the said sum to the extent required to match and supplement Federal Aid for construction, right of way, and other costs on any Federal projects located on the county trunk highway system of said County, which are not recovered from Federal funds, and to expend any balance for constructing, repairing, and maintaining such county trunk highway system and the bridges thereon, including snow and ice removal and control, as directed in Section 83.10(1) of the Statutes, and to reimburse the General Fund for any expenditures that may be made therefrom pursuant to Section 83.01(6) of the Statutes.

SECTION III. WHEREAS it appears that certain additional highway improvements in the County are necessary and warranted.

BE IT RESOLVED that the County Board does hereby appropriate the following sums for the purpose hereinafter set forth:

(1) For snow and ice removal on the County Trunk Highway System, the sum of Two hundred thousand and no/100 Dollars (\$200,000.00).

(2) For the Sign Department, the sum of Fifty-six thousand and no/100 Dollars (\$56,000.00).

(3) For county trunk highway maintenance (to provide dust settler on construction projects, etc.), the sum of Eighteen thousand and no/100 Dollars (\$18,000.00).

(4) For administration, including salaries, per diem, officer and travel expense of the County Highway Committee, the County Highway Commissioner, his clerks and assistants not paid from construction or maintenance funds, the sum of Ninety thousand and no/100 Dollars (\$90,000.00).

(5) For the Engineering Fund and for the purchase of right of way on county trunk highways, the sum of Fifty thousand and no/100 Dollars (\$50,000.00).

Total Authorized in this Section - \$414,000.00.

SECTION IV. WHEREAS appropriations are made herein, in addition to the amounts to be received from the State and available for work in the County under Section 20.395 of the Statutes,

BE IT RESOLVED that the County Board does hereby levy a tax on all of the property in the County to meet such appropriations as follows:

For the various purposes as set forth in Section III hereof the sum of Four hundred fourteen thousand and no/100 Dollars (\$414,000.00).



WARNING: It is directed that provision for this levy shall be made in the County budget, but that this levy shall not be duplicated.

SECTION V. WHEREAS the various highway activities for which provision is made in this resolution are continuous from year to year, and the exact cost of any work cannot be known at the time of making the appropriation therefor,

BE IT RESOLVED that this Board does hereby direct that any balance remaining in any appropriation for a specific highway improvement after the same shall have been completed may be used by the County Highway Committee to make up any deficit that may occur in any other improvement, which is part of the same item in the County budget, for which provision is herein made, and any balances remaining at the end of the year in any highway fund shall remain and be available for the same purpose in the ensuing year.

SECTION VI. WHEREAS the exact amount of the funds that will become available from the State for highway purposes in the County under Section 20.395 of the Statutes will not be known until on or after next June 30th.

BE IT RESOLVED that the County Treasurer is hereby authorized and directed to make payments for the purposes for which such funds are to be used, as hereinbefore authorized, from any funds in the County treasury that are not required for the purpose for which appropriated prior to next August 1st, and to reimburse such funds in the County treasury from the sums received under Section 20.395 of the Statutes.

SECTION VII. WHEREAS the County Highway Committee and the County Highway Commissioner are charged with the duty and responsibility of carrying out the construction and maintenance of highways for which provision is made, and other related supervisory and administrative duties,

BE IT RESOLVED that the County Highway Commissioner shall have authority to employ, discharge, suspend, or reinstate such personnel as he deems necessary for such purposes, provided however that the County Highway Committee may by action recorded in its minutes determine the number of persons to be hired and may also at any time by action so recorded order the County Highway Commissioner to employ, discharge, suspend, or reinstate any such person. The term "personnel" or "person" shall include all patrolmen, laborers, foremen, clerks, stenographers, or other employees necessary to carry on such activities.

Presented this 12th day of November, 1980.

Lawrence D. Dyer  
William F. Feltz  
Chad L. Lipp  
Reuben H. Hauschild  
Arnold Adams  
Pierce County Highway Committee

RESOLUTION NO. 80-53

COUNTY AID BRIDGE CONSTRUCTION UNDER SECTION 81.38 OF THE STATUTES  
COUNTY OF PIERCE

TO THE HONORABLE BOARD OF SUPERVISORS FOR PIERCE COUNTY, WISCONSIN:

GENTLEMEN:

WHEREAS, the various towns hereinafter named have filed petitions for county aid in the construction of bridges under Section 81.38 of the Statutes, said petitions are hereby granted, and the County's share is appropriated as follows:

<u>Town</u>	<u>Bridge</u>	Amount of County Aid Granted	Amount Raised by Local Units	Farmer's Share
Ellsworth	Lantz Bridge (Deficit)	\$ 7.77	\$ 7.77	
El Paso	Kannel Bridge	4,849.96	4,849.97	
El Paso	Schlosser Bridge	5,000.00	40,000.00	
Martell	Finke Bridge	5,885.70	5,885.70	
Salem	Eggenberger Bridge	2,844.00	2,844.00	
Salem	Herbison Bridge	27,355.67	27,355.68	
Trenton	Swedien Bridge	3,904.20	3,904.21	
Trimbelle	Snow Bridge	29,071.28	29,071.27	
	Total	\$ 78,918.58	\$ 113,918.60	

The County Board does hereby levy a tax to meet such appropriations on all of the property in the county which is taxable for such purpose.

WARNING: It is directed that provision for this levy shall be made in the county budget, but that this levy shall not be duplicated.

Presented this 12th day of November, 1980.

Laurel Weiss  
Arnold Odalen  
Charles L. Loh  
Killian Hatterick  
Robert Spunholz  
Pierce County Highway Committee



RESOLUTION NO. 80-54

Authorization to Purchase "Jaws of Life"

TO THE HONORABLE BOARD OF SUPERVISORS  
FOR PIERCE COUNTY, WISCONSIN

GENTLEMEN:

WHEREAS, the Pierce County Board of Supervisors at their October 28<sup>th</sup> meeting viewed a demonstration on the "Jaws of Life", and

WHEREAS, the Law Enforcement Department feels this machine could possibly make a difference in saving a human life in the event of an accident, and

SO NOW THEREFORE BE IT RESOLVED, that the Pierce County Board of Supervisors authorize transfer from General Fund to Sheriff's Administration a total, not to exceed \$8,200.00, to purchase the "Jaws of Life".

Dated this 12<sup>th</sup> day of November, 1980.

William J. Mustason

Lawrence W. Wuer

Le Roy Knudson

RESOLUTION # 80-54 17

TO THE HONORABLE BOARD OF SUPERVISORS FOR PIERCE COUNTY, WISCONSIN  
GENTLEMEN,

WHEREAS, Pierce County has been involved in the development of the county snowmobile program, and

WHEREAS, Pierce County has worked in conjunction with the Pierce County Snowmobile Council and the associated snowmobile clubs to develop and maintain 187.6 miles of public snowmobile trails funded through snowmobile registration fees, and

WHEREAS, a snowmobile bridge is needed to cross the Isabelle Creek in Hartland Township, and

WHEREAS, Pierce County has installed a new county highway bridge on County Highway EE west of Esdaile, and

WHEREAS, the old highway bridge would provide an excellent snowmobile bridge crossing,

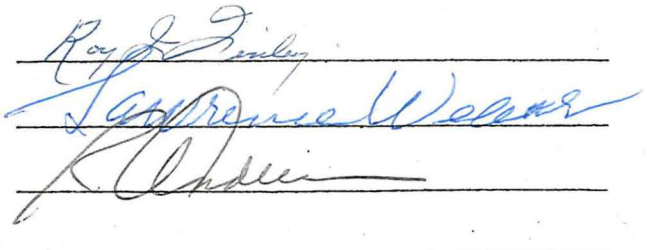
NOW, THEREFORE BE IT RESOLVED, that this bridge be purchased through the Pierce County Snowmobile Program for the fee of one dollar for use as a snowmobile trail bridge crossing, and

BE IT FURTHER RESOLVED, that the County Highway Department retain no liability regarding this bridge and that the bridge be considered similar in nature to other county snowmobile bridges to be maintained and painted through the county snowmobile program.

Adopted this ~~16th~~ day of December, 1980.

23rd

Respectively submitted by,



Pierce County Parks Committee



RESOLUTION 80-55

1981 BUDGET

TO THE HONORABLE BOARD OF SUPERVISORS  
FOR PIERCE COUNTY: WISCONSIN

GENTLEMEN:

BE IT RESOLVED, that there be a tax levied upon all taxable  
property of Pierce County for operation and maintenance for the  
1981 Budget in the amount of 2,931,810.76.

DATES THIS 13TH DAY OF NOVEMBER, 1980.

Thomas J. Christman  
Laurence W. W. W.  
Raymond A. A.  
William T. T.  
Howard B. B.

PIERCE COUNTY PLATBOOK

TO THE HONORABLE BOARD OF SUPERVISORS  
FOR PIERCE COUNTY: WISCONSIN  
GENTLEMEN:

WHEREAS, the Pierce County 4-H Adult Advisors, Inc. are sponsoring  
a new plat book of Pierce County, and

WHEREAS, this book is generally recognized as the official plat  
book of Pierce County, and

WHEREAS, it would be desirable to include a directory of county  
officers, the County Board of Supervisors, township clerks, treasurers,  
and assessors and important facts about land descriptions,

THEREFORE BE IT RESOLVED, that the Pierce County Board of Supervisors  
sponsor three pages in the new plat book necessary to print this information,  
at the cost of two-hundred-twenty-five-dollars (\$225) per page, total for three  
pages, six-hundred-seventy-five-dollars (\$675).

Dated this 23<sup>rd</sup> day of December, 19 80

Respectfully submitted

Wm. M. Cardle  
Reginald Anderson  
R. Under  
Francis Carlson  
Wm. J. Martinson

Pierce County Agriculture and Extension  
Education Committee



RESOLUTION NO. 80-56

TITLE: HUMAN SERVICES DEPARTMENT POSITIONS AND SALARIES

INTRODUCED BY THE PERSONNEL COMMITTEE

Gentlemen:

Whereas, the Personnel Committee has proposed new positions and salaries for non-union positions for the Human Service Department,

Therefore, Be it Resolved, that the following positions and salaries be established effective January 1, 1981:


<u>Position</u>	<u>Start</u>	<u>6 Months</u>
Deputy Director	<u>1950 716.67</u>	<u>2040</u>
Developmental Disabilities	1,667	1,750
Day Activity Center Director	1,250	1,300

Be it Further Resolved, that all employees transferred from Unified Services of Western Wisconsin receive their present salary until the union contract covering their position has been signed.

Dated: December 23, 1980

  
Marvin Christenson

William Falteisek

  
Lawrence Weber

  
Roy J. Finley

  
LeRoy Knudsen

RESOLUTION 80-57

INDIANHEAD LIBRARY SYSTEM BOARD

TO THE HONORABLE BOARD OF SUPERVISORS  
FOR PIERCE COUNTY: WISCONSIN

GENTLEMEN:

WHEREAS, The County Board Chairpersons in the geographic area representing the Indianhead Library System Board at a recent meeting expressed a great deal of concern over the funding mechanism for the Indianhead Library System Board; and

WHEREAS, the chairpersons mutually agreed that improved communication is needed between the Indianhead Federated Library System Board and the respective County Boards within the Indianhead Library System area; and

WHEREAS, one method of improved communication and control is to grant the authority to the respective County Board Chairpersons within the Indianhead Library System area to make said appointments which will enable and provide greater input from the County Boards' standpoint; and

WHEREAS, Section 43.19 (1) (b), Wisconsin Statutes., permits counties to act jointly in making said appointments;

NOW, THEREFORE, BE IT RESOLVED that the Pierce County Board of Supervisors hereby delegates the authority to the Pierce County Board Chairperson, effective January 1, 1981, for making the Indianhead Library System Board appointments;

BE IT FURTHER RESOLVED that the library board shall consist of twenty (20) members and that the Chairpersons of each participating County Board be authorized to determine, in accord with Sec. 43.19 (1) (b), Stats., the number of library board members to be appointed by each county and the rotational basis for county board representation;

BE IT FURTHER RESOLVED that the Counties of Barron, Dunn, Pepin, Price, Polk, St Croix, Eau Claire, and Rusk are formally requested to pass similar legislation;

BE IT FURTHER RESOLVED that the County Clerk is hereby directed to furnish a certified copy of this Resolution to the County Board Chairperson of Barron, Dunn, Pepin, Price, Polk, St Croix, Eau Claire, and Rusk Counties.

DATES THIS 23RD DAY OF DECEMBER, 1980.

*William Galtier*  
*L. Ray Knudsen*  
*James J. Christensen*



RESOLUTION 80-58

ENCOURAGE CONTINUATION OF GREAT RIVER ROAD

TO THE HONORABLE BOARD OF SUPERVISORS

FOR PIERCE COUNTY: WISCONSIN

GENTLEMEN:

WHEREAS, The Great River Road is rapidly becoming a reality as a scenic and transportation thoroughfare from the palms of the Gulf of Mexico through the lush lands of Wisconsin to the pines of Canada; and

WHEREAS, the most recent impetus for the protection of the scenery of the Great River Road corridor and the development of the desirable amenities alongside the Road has been stirred by the influx of Federal aid funds; and

WHEREAS, the states along the Great River are sharing a common concern about inadequate finances to maintain their transportation systems and must perforce continue to rely upon the Federal funds to implement the ongoing progress of Great River Road development;

NOW, THEREFORE, BE IT RESOLVED by the Pierce County Board of Supervisors meeting in official session this 23rd day of December, 1980, to petition the Congress of the United States to continue the Great River Road (GRR) program instituted in 1973;

AND, FURTHER, BE IT RESOLVED that this message be brought to the attention of the Members of Congress from the State of Wisconsin with the appeal that each and all exert the powers of their respective offices in the interest of seeking this continuation.

DATED THIS 23RD DAY OF DECEMBER, 1980

Roy DeSousa  
William Faltersich  
Lawrence Weber

FARMLAND PRESERVATION GRANT SUPPLEMENT

TO THE HONORABLE BOARD OF SUPERVISORS FOR  
PIERCE COUNTY, WISCONSIN

GENTLEMEN:

WHEREAS, there has been a high level of participation by Pierce County farmers in the Farmland Preservation Program and

WHEREAS, Pierce County has received a Farmland Preservation Planning and Mapping Grant, and

WHEREAS, a half-time planner position has been created to prepare a Farmland Preservation Plan by the 1982 deadline, and

WHEREAS, additional funding is required for this position and for the balance of the mapping to be done,

NOW, THEREFORE BE IT RESOLVED THAT Pierce County submit a supplemental funding request of \$10,750. through the Farmland Preservation Planning Grant Program.

Dated this 23rd day of December, 1980.

Respectfully Submitted,

Le Roy Knudsen  
Francis Carlson  
Don M. Cardle  
\_\_\_\_\_  
\_\_\_\_\_

Pierce County Zoning Committee

I, David Sorenson, County Clerk for Pierce County do hereby certify that the foregoing Resolution was adopted by the Pierce County Board of Supervisors on December 23rd, 1980.

David Sorenson  
David Sorenson, Pierce County Clerk



RESOLUTION 80-60

APPROVE CONTRACT FOR LAW ENFORCEMENT PERSONNEL

TO THE HONORABLE BOARD OF SUPERVISORS  
FOR PIERCE COUNTY: WISCONSIN

GENTLEMEN:

WHEREAS, The Personnel Committee has met with representatives from the Law Enforcement and worked out an agreement for 1981:

WHEREAS, The following agreement is being offered for your approval:

A. Cost Factors:

1. WAGES

- a) 65¢/hr. across the board effective 1/1/81.
- b) 11¢/hr. across the board effective 7/1/81.
- c) Increase the dollar differential between Step 4 and Step 5 to \$25.00 on 1/1/81. Thus, a deputy sheriff at Step 5 would start 1981 (before any increase) at \$1,276.53 per month.

2. OVERTIME: Article 25:

Change the last sentence to read as follows:

The first four (4) hours compensable time shall be paid at time and one-half pay and time thereafter shall be paid at straight time pay.

3. SETTLEMENT COMPUTATION

1980 average hourly rate = \$6.74/ hour

65¢/hr = 9.6% over term of contract

11¢/hr = .8% over term of contract

\$23 increase at step 5 for 8 employes = .78%

Approximate 1981 cost to Pierce County = 11.18 %

DATED THIS 23RD DAY OF DECEMBER, 1980.

L. Ray Knudson

Reg. J. Zimley

William T. Alterick

Marvin J. Muetters

RESOLUTION 80-61

APPROVE THE PROFESSIONAL SOCIAL SERVICES CONTRACT 1981

TO THE HONORABLE BOARD OF SUPERVISORS  
FOR PIERCE COUNTY: WISCONSIN

GENTLEMEN:

WHEREAS, The Personnel Committee has met with representatives from the Social Services and worked out an agreement for 1981:

WHEREAS, The following agreement is being offered for your approval"

- A.1. CALL OUT: Change hours from "6:00p.m. to 7:00a.m." to 5:00 p.m. to 7:00 a.m.
2. CALL OUT: Change 50¢/hr. to 65/hr
3. WAGES: 90¢/hour effective 1/1/81.
4. MILEAGE: Increase 18¢ to 19¢ in Article 27, Section 1.

B. SETTLEMENT COMPUTATION

1980 average hourly rate = 9.00/hr

90¢.hr= 10% over term of contract

DATED THIS 23RD DAY OF DECEMBER, 1980

Lo Roy Knudsen

Roy L. Senley

William F. Altusick

Mary J. Mroczkowski

Lawrence W. W.



RESOLUTION NO. 80-63

Create Secretary For Planning & Civil Defense

TO THE HONORABLE BOARD OF SUPERVISORS  
OF PIERCE COUNTY, WISCONSIN

GENTLEMEN:

WHEREAS, the Pierce County Board of Supervisors under Resolution No. 80-27 created a part-time Planner for Pierce County, and

WHEREAS, the workload in the Zoning Office, caused in some instances by State mandated programs, has made it necessary that the Zoning secretary concentrate on Zoning matters exclusively, and

WHEREAS, the Personnel Committee has recommended duties of combined Civil Defense and Planning secretary for Pierce County to begin on January 01, 1981, and

SO NOW THEREFORE BE IT RESOLVED, that the County Board create position of Planning and Civil Defense Secretary as of January 01, 1981.

Dated this 23<sup>rd</sup> day of December, 1980.

Lo Roy Kauden

Ray J. Zuby

William Falterski

Marvin J. Bluthman

Lawrence Weiss

RESOLUTION 80-64

ENDORSE CHANGES IN RE-APPORTIONMENT LEGISLATION

TO THE HONORABLE BOARD OF SUPERVISORS  
FOR PIERCE COUNTY: WISCONSIN  
GENTLMEN:

WHEREAS, the Wisconsin County Boards Association has endorsed legislation on re-apportionment to simplify and clarify the provisions affecting municipal subdistricting into wards, and their affect on the creation of county supervisory districts.

WHEREAS, the following modifications are proposed as follows:

1. Villages and towns with populations under 1,000 may create wards if this facilitates the administration of elections.
2. Cities with one enumeration district that elect council members from aldermanic districts are required to divide into wards that are substantially equal in population.
3. Cities with more than one enumeration district, but no block statistics, must, in cooperation with the county, divide into wards that will enable the creation of aldermanic districts that are substantially equal in population and supervisory districts that are substantially equal in population.
4. Cities with block statistics, must, in cooperation with the county, create wards that will enable the creation of both aldermanic districts that are substantially equal in population and supervisory districts that are substantially equal in population.
5. When the use of whole census enumeration districts prevents the creation of county supervisory districts that are substantially equal in population, the municipality in which the E.D. is located shall, in cooperation with the county, divide into wards.
6. Any division of enumeration districts into wards shall be based on the best statistical evidence as defined in this proposal.
7. Where wards have been established in villages or towns having a population of less than 10,000, if the combination of wards into election districts does not require a division of the village or town for ballot purposes, such wards may be combined for the administration of elections. In that case, combined ballot boxes may be used and the election results for each ward do not have to be tallied separately.
8. Wards below the minimum population prescribed by law may be established.
9. Counties are authorized to bring action in circuit court whenever any city, village or town fails to comply with the ward creation law in a timely fashion.



SO NOW THEREFORE BE IT RESOLVED that the Pierce County Board of Supervisors assembled here this 23rd day of December, 1980 endorse the proposed legislation as set forth in the above proposals.

DATED THIS 23RD DAY OF DECEMBER, 1980

William F. Alteris

Ray L. Sorenson  
Thomas J. Christensen

I, David Sorenson, County Clerk for Pierce County do hereby certify that the foregoing Resolution was adopted by the Pierce County Board of Supervisors on the 23rd day of December, 1980.

David Sorenson

David Sorenson, County Clerk

RESOLUTION 80-66

COURTHOUSE AND HIGHWAY CONTRACT 1981

TO THE HONORABLE BOARD OF SUPERVISORS  
FOR PIERCE COUNTY: WISCONSIN

GENTLMEN:

WHEREAS, The Personnel Committee has met with representatives from the Courthouse and Highway Employees and worked out an agreement for 1981:

WHEREAS, the following agreement is being offered for your approval:

1. One year contract
2. COLA CLAUSE (PLUS \$.10¢ PER HR)
3. (.01) per hour increase for each four tenths (.04) of a point increase in the consumer price index, on the following calculations;

JANUARY 1, 1981 INCREASE, The November CPI report (issued in December), shall be compared with the CPI report for May (issued in June).

JULY 1, 1981 INCREASE, The CPI report for May shall be compared with the CPI report for the preceding November.

DATED THIS 23RD DAY OF DECEMBER, 1980.

La Roy Knudsen  
Ray J. Ziegler  
William F. Altierich  
Wm J. Christensen  
Lawrence J. Clark



RESOLUTION NO. 80-68

Approve Salaries For Non-Union Personnel

TO THE HONORABLE BOARD OF SUPERVISORS  
FOR PIERCE COUNTY, WISCONSIN

GENTLEMEN:

WHEREAS, the Personnel Committee has met and recommended that the non-union department heads receive a salary increase as described below effective 1-01-81, and

WHEREAS, the following schedule is being offered for your approval:

- 1) Salaries under \$15,000.00 will increase 10%
- 2) Salaries over \$15,000.00 will increase \$125.00 per month
- 3) The base pay of the Maintenance Supervisor be raised to \$15,000.00 per year, and will increase 10% as of 1-01-81  
Temporary employees will be paid \$4.00 per hour.

AND WHEREAS, the Personnel Committee met with the non-union Public Health nursing staff and worked out an agreement for 1981:

WHEREAS, the following agreement is being offered for your approval, effective 1-01-81:

- 1) Salaries under \$15,000.00 will increase 10%
- 2) Salaries over \$15,000.00 will increase \$125.00 per month
- 3) Will receive longevity as in Social Service contracts
- 4) Part-time employees get pro-rated fringe benefits if over 50% time

Dated this 23rd day of December, 1980.

L. Roy Knudson

Roy J. Zimley

William J. Altieri

Travis J. Huston

Laurence W. W. W.

WHEREAS, The Pierce County Highway Committee has recommended and approved the lease of certain real estate belonging to Pierce County, described as follows:

Commencing at the northeast corner of the southwest one quarter section of Section Thirty-four, Township Twenty-five North, Range Eighteen West (Trenton Township); thence south on the mid-section line for a distance of 536 feet to a point of beginning. From the point of beginning, thence westerly at a 280 degree azimuth along the southern edge of the existing Pierce-Pepin Electric Cooperative utility easement for a distance of 652 feet; thence southerly at a 180 degree azimuth for a distance of 696 feet to the center line of the existing east-west county access roadway; thence easterly on the center line of the county access roadway for a distance of 665 feet to the north-south mid-section line of Section 34; thence northerly on the mid-section line for a distance of 512 feet to the point of beginning, which is further described on the aerial photocopy attached hereto, and made a part hereof.

To Bluff Land Forest Products, Inc. of Hager City, Wisconsin, a Wisconsin Cooperation for use as a wood processing industry, and,

WHEREAS, said lease would be for the benefit of Pierce County in that otherwise vacant land would be put to productive use, and further that income would be earned by the County from rents and taxes.

BE IT RESOLVED, That the County enter into said lease with said Bluff Land Forest Products Inc., and that the signatures of the County Clerk and County Board Chairman be affixed thereto, on behalf of the County of Pierce.

Dated the 23rd day of December 19 80.

Laurance Wacker

William Feltner

Clyde H. Wolf

Reuben Henschelt

Arnold Odalen



73

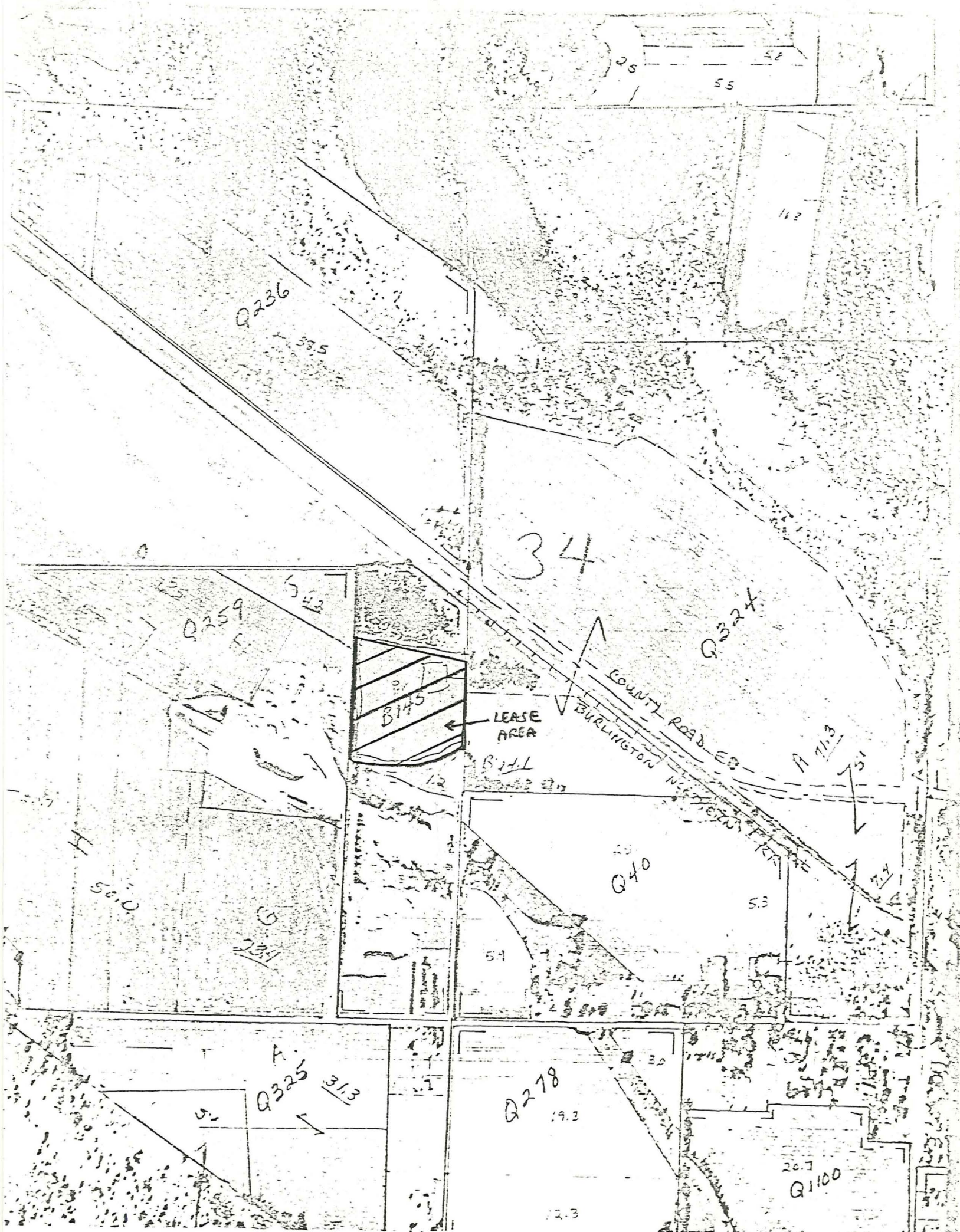
G 0

534

173

1742

C10P 1/4



Hwy Comm  
meets Aug 7



RESOLUTION 80-70

TRANSFER OF FUNDS

TO THE HONORABLE BOARD OF SUPERVISORS  
FOR PIERCE COUNTY: WISCONSIN

GENTLEMEN:

WHEREAS, The following accounts will not have sufficient funds in their budget for the balance of 1980:

WHEREAS, The following accounts and amounts to be transferred are listed below:

CIRCUIT COURT:	\$5,000.00
COURTHOUSE AND JAIL	\$9,000.00
<hr/>	
LABOR NEGOTIATIONS	\$ 6,000.00

SO NOW THEREFORE BE IT RESOLVED that the County Board of Supervisors authorize transfer of funds for these accounts.

DATED THIS 23RD DAY OF DECEMBER, 1980.

Harold A. Peterson

William A. Lattin

Lawrence W. Weller

\_\_\_\_\_  
\_\_\_\_\_