

The Peterborough Community Power Task Force was created last September by the Select Board as an official town committee. Since then, we've written a draft Community Power Plan for Peterborough that will be voted on at this year's town meeting. The following is a presentation that we put together to provide an overview of Community Power and share the details of the plan.

CONTENTS

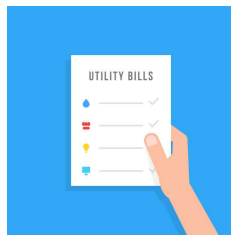
- **What** is Community Power?
- **How** Does it Work?
- **Benefits**
- Participation is **Optional**
- Remaining **Steps for Launching** in Peterborough

In this presentation, we'll discuss what Community Power is and how it works. Then we'll cover the primary benefits of Community Power and review the various options the Community Power Plan will offer. Then, finally, we'll outline the steps that remain in order to launch Community Power in Peterborough.

WHAT IS COMMUNITY POWER?

A WAY FOR TOWNS TO:

Control Costs for
Ratepayers



Get More Energy From
Renewable Sources



Community Power is a way for towns to help ratepayers save money on their energy bills while also getting more energy from renewable sources.

WHAT IS COMMUNITY POWER?

- Under NH RSA 53-E, Towns may **Pool their total energy needs to purchase in bulk.**



- **Peterborough's Municipal Buildings**
 - Avg Savings of 2 Cents/kWh
 - Avg Renewables 70%

- **CONVAL School District**



- The NH State legislature passed a law, [RSA 53-E](#), that allows local governments to pool the total energy needs of all their residents and small businesses to make bulk purchases of electricity at wholesale prices.
- It's a lot like how the Town of Peterborough has aggregated the energy supply for its municipal buildings for the past several years. Since 2013, under that program, the town has averaged a savings of approximately two cents per kilowatt-hour and has increased its percent from renewable sources, on average, to 70% which is over 3 ½ times that of the Eversource default during the same period.
- The CONVAL School District is also buying the electricity supply for its buildings in the same way.

WHAT IS COMMUNITY POWER?

- **Experienced Service Providers operate the program, not town staff.**

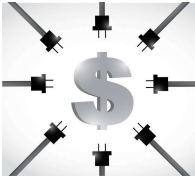


- **Eversource continues to own and maintain the poles and wires.**



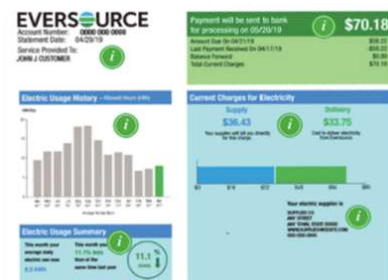
- With Community Power, towns work in collaboration with experienced service providers who know the electricity market, so town staff don't need expertise in the energy sector, and won't be tied up with operation or administration of the program.
- With Community Power, the town doesn't own or maintain the poles and wires. Repairs, power outages and routine upgrades are still taken care of by the utility, Eversource.

HOW DOES COMMUNITY POWER WORK?



- Peterborough would pool the town's total energy demand and make a bulk purchase.

- Eversource would still deliver the electricity.
- Billing would still come from Eversource.



- In a Community Power Program, the town of Peterborough would pool the town's total energy demand and make a bulk purchase of electricity for residents and small businesses.
- Eversource is the utility that delivers electricity to customers in Peterborough. Eversource also buys the electricity that they deliver to customers who are on their default plan. With a Community Power Plan, Eversource would still deliver electricity to all Peterborough customers, but the Town, not Eversource, would buy the electricity, in bulk, for residents and small businesses.
- There would be no change in billing or payments - all billing would continue to be done monthly by Eversource and customers' payments would still be made to them.

HOW DOES COMMUNITY POWER WORK?

EVERSOURCE

Account Number:
Customer name key
Statement Date:
Service Provided To:

Svc Addr: PETERBOROUGH NH 03408
Serv Ref: 457573008 Bill Cycle: 06
Service from 11/30/21 - 12/10/21 31 Days
Next read date on or about: Jan 12, 2022

| Meter Number | Current Read | Previous Read | Current Usage | Reading Type |
|--------------|--------------|---------------|---------------|--------------|
| 570602771 | 24164 | 23651 | 513 | Actual |

| Monthly kWh Use | | | | | | |
|-----------------|-----|-----|-----|-----|-----|-----|
| Dec | Jan | Feb | Mar | Apr | May | Jun |
| 331 | 401 | 340 | 353 | 344 | 299 | 299 |
| Jul | Aug | Sep | Oct | Nov | Dec | |
| 454 | 399 | 458 | 280 | 646 | 513 | |

Contact Information
Emergency: 800-662-7754
www.eversource.com
Customer Service@eversource.com
Pay by Phone: 888-729-7754
Customer Service: 800-662-7754

For information or questions regarding your account, please contact Eversource at the number above. If, after contacting us, your billing dispute is still unresolved, you may call the New Hampshire Public Utilities Commission at 800-652-3793.

Important Messages About Your Account
Please note: Payment amounts differ for each bill. Therefore, it may take longer than the date that appears on your bill for the funds to be deducted from your bank account.

The standard cost recovery charge is composed of a rate reduction bond charge owned by PSE&G Funding LLC & a fee with the NREPC and a standard cost recovery amount approved by the NREPC.

IDENTITY PROTECTION
On November 1, 2020, Eversource implemented additional identity protection measures to safeguard our customers' confidential account information. These measures will help us to protect your confidential personal information and ensure only authorized access to your account. For current customers requesting account information or access, Customer Service Representatives will use several secure questions to verify the caller's identity and their right to access the requested account information. We are committed to providing the excellent customer service you deserve and the timely information you need to manage your energy use.

Payment will be sent to bank for processing on 12/31/21 **\$109.61**

Electric Account Summary
Amount Due On 12/30/21 \$134.44
Last Payment Received On 11/30/21 -\$134.44
Balance Forward \$0.00
Current Charges/Credits \$0.00
Electric Safety Services \$0.00
Delivery Services \$64.33
Total Current Charges \$109.61
Total Amount Due \$109.61

Total Charges for Electricity

Supplier
Eversource
Service Reference: 457573008
Energy Chrg - Rate R 513.00kWh X \$0.08826 \$45.28
Subtotal Supplier Services \$45.28

Delivery
(RATE R RESIDENTIAL SVC)
Service Reference: 457573008
Customer Chrg \$13.81
kWh Distribution Chrg 513.00kWh X \$0.05177 \$26.56
Regulatory Reconciliation Adj 513.00kWh X \$-0.00016 -\$0.08
Transmission Chrg 513.00kWh X \$0.03046 \$15.63
Stranded Cost Recovery Chrg 513.00kWh X \$0.00896 \$4.60
System Benefits Chrg 513.00kWh X \$0.00743 \$3.81
Subtotal Delivery Services \$64.33
Total Cost of Electricity \$109.61
Total Current Charges \$109.61

Total Charges for Electricity

Supplier

Eversource

Service Reference: 457573

Energy Chrg - Rate R 513.00kWh X \$0.08826 \$45.28

Subtotal Supplier Services \$45.28

Delivery

(RATE R RESIDENTIAL SVC)

Service Reference: 457573008

Customer Chrg \$13.81

kWh Distribution Chrg 513.00kWh X \$0.05177 \$26.56

Regulatory Reconciliation Adj 513.00kWh X \$-0.00016 -\$0.08

Transmission Chrg 513.00kWh X \$0.03046 \$15.63

Stranded Cost Recovery Chrg 513.00kWh X \$0.00896 \$4.60

System Benefits Chrg 513.00kWh X \$0.00743 \$3.81

Subtotal Delivery Services \$64.33

Total Cost of Electricity \$109.61

Total Current Charges

\$109.61

- The charges on your Eversource electric bill are broken into two parts. The top portion is for the Supplier charges. This is the portion that is changed under Community Power, as your supplier will become Peterborough Community Power.
- The bottom portion of the charges is for Delivery. This is what Eversource charges you for delivering your electricity using their poles and wires. This portion will not change under Community Power since Eversource continues to deliver your electricity.

HOW DOES COMMUNITY POWER WORK?

Net Metering



Electric Assistance Discounts

- Under the Peterborough Community Power Plan, any homes and businesses with on-site renewable energy sources such as solar, wind or hydro, may continue to sell their excess electricity back to the grid through Net Metering.
- Income eligible households who qualify for discounts on their electric bills under the Electric Assistance Program, and are enrolled in such, will continue to receive their discount under the Plan.

COMMUNITY POWER BENEFITS

1. Savings

Community Power may help Peterborough's ratepayers save money.



Community Power offers several benefits. They include 1. Savings: Community Power may help Peterborough's ratepayers save money. A Community Power Plan allows a municipality to choose when it buys energy, so that, along with buying in bulk, could potentially allow Peterborough to buy energy at a lower rate than Eversource's default rate. Lower electricity rates mean lower electricity bills.

COMMUNITY POWER BENEFITS



2. More Local Choice

Peterborough would have more control over:

- Its **energy mix**
- **Where** it comes from
- How **rates** are set.

Secondly, with More Local Choice, Peterborough would have more control over its energy mix, where it comes from, and how rates are set.

COMMUNITY POWER BENEFITS

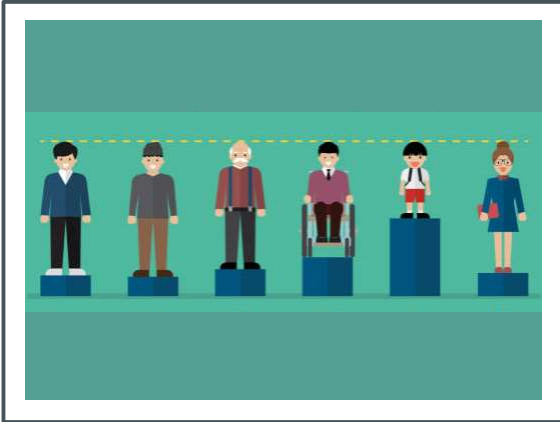
3. Supports Peterborough's Energy Goals

100% renewable
sources of electricity
by 2030.



Third, Community Power Supports Peterborough's Energy Goals: Because a Community Power Plan would give Peterborough control of its energy portfolio, Peterborough could choose to buy more energy from renewable sources like solar, wind, and hydro. This can help Peterborough meet its goal of transitioning to 100% renewable sources of electricity by 2030 (as per 2021 Town Meeting vote which passed overwhelmingly).

COMMUNITY POWER BENEFITS



4. Promotes Equity

Residents of all income levels and housing types could enjoy the benefits of renewable energy.

Fourth, Community Power also Promotes Equity: Community Power allows residents of all income levels and housing types to enjoy the benefits of renewable energy. You don't have to have solar panels on your home. You just need to pay your electric bill.

COMMUNITY POWER BENEFITS

5. New Products & Services

A **Reserve Fund** could be established to finance locally determined projects.



And fifth, a Community Power Plan can establish a reserve fund to be used down the road to finance a variety of locally determined projects. Some examples include:

- Local renewable energy development
- Energy efficient renovations for low/moderate income homes
- Batteries, to store energy for use during power outages

OPTIONAL



- Ratepayers currently on Eversource's default energy supply would be automatically enrolled and notified. **Anyone may opt out.**
- Ratepayers currently using 3rd-party energy suppliers, **may opt in.**

- Community Power will be Completely Optional
 - All Peterborough residents and businesses who currently receive Eversource's default energy supply will be automatically enrolled in the Community Power Plan. They will receive a notification from the Town in the mail letting them know about this change. Anyone who prefers not to participate may opt out and remain on the Eversource default supply rate.
 - Ratepayers who are not on Eversource's default supply rate, but who have previously chosen a third-party energy supplier, may opt-in to the program whenever they like.

COMMUNITY POWER IS COMPLETELY OPTIONAL

- **FOUR RATE TIERS:**

1. Default
2. Opt-Down
3. Opt-Up (~50% Renewables)
4. Opt-Up (100% Renewables)



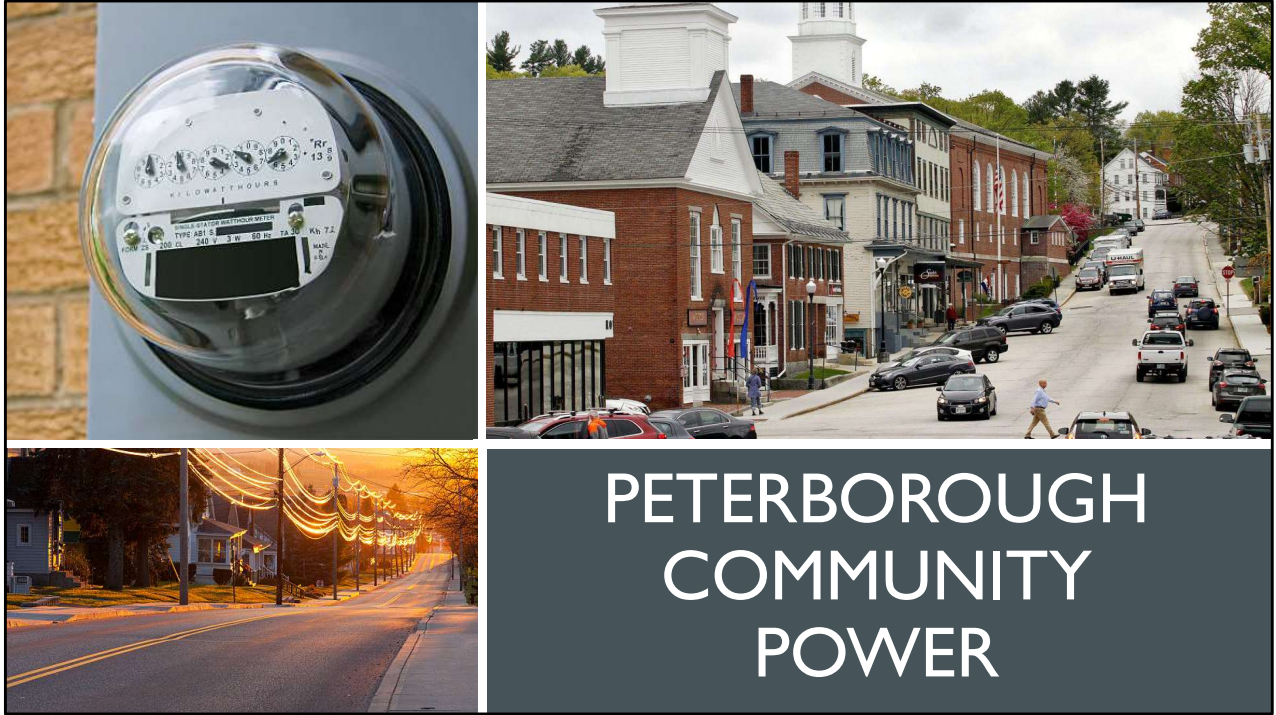
- **NO FEE or PENALTY for **Opting Out** or **Changing** rate tiers at any time.**

- The Peterborough Community Power Plan will offer four rate tiers. Each tier will have a different percentage of renewable energy along with a different cost.
- The default tier, with automatic enrollment, will have a rate that is equal to, or lower than the current Eversource default rate, along with a slightly higher percentage of renewable energy sources.
- There will be one “Opt Down” tier with an even lower rate but with less renewable energy than the default tier.
- There will be two “Opt-Up” tiers. One with roughly 50% renewable energy sources, and another with 100% renewable energy, each with its own rate.
- All Peterborough rate payers will be placed on the default tier unless they either opt out of the plan, or choose one of the three optional tiers.
- Anyone may choose to change tiers or opt out of the plan entirely at any time, without incurring any fee or penalty for doing so.

REMAINING STEPS FOR LAUNCHING COMMUNITY POWER IN PETERBOROUGH

- 1. Town Meeting Vote**
- 2. Submission to Public Utilities Commission (PUC) for approval**
- 3. Contract Signed with a Service Provider**
- 4. Notification to Residents and Businesses**
- 5. Program Launch**

- The remaining Steps for Launching Community Power in Peterborough are:
 1. Residents will vote to approve the Plan at Town Meeting.
 2. Once approved by voters, the Plan will be submitted for approval by the Public Utilities Commission.
 3. The Town will then sign a Community Power contract with a Service Provider, then
 4. Once the plan is approved by the PUC, the town will mail an announcement to residents and small businesses telling them that they will be enrolled in the new Community Power Plan, providing them with the default rate information, and providing them an opportunity to opt out of the program if they wish. Optional rate tiers will also be explained and an opportunity will be provided to enroll in one of them for anyone who chooses to do so.
 5. Then, finally, utilizing the Service Provider, the program will be launched.



That concludes our overview of Peterborough Community Power.
Thank you.