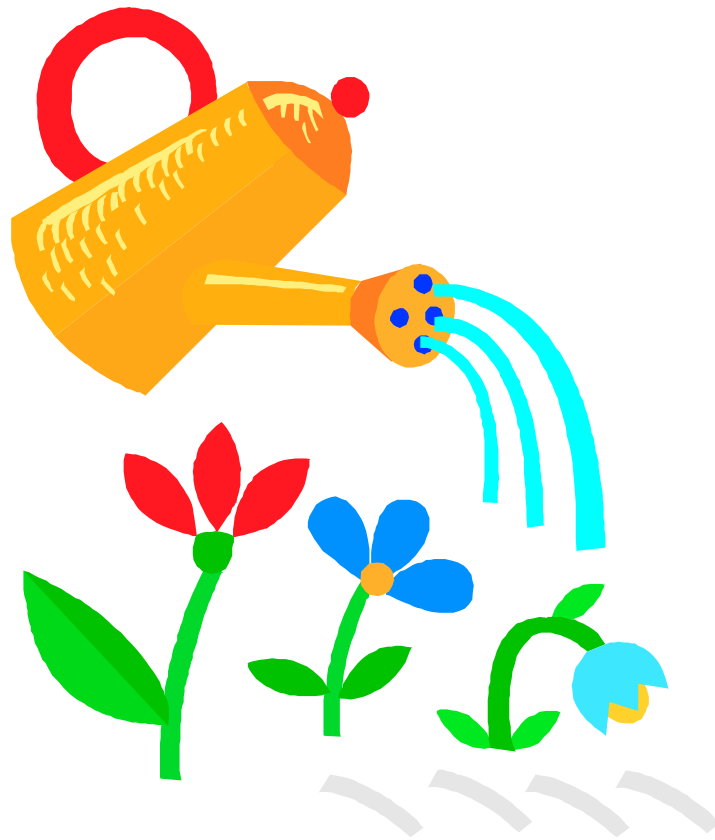


City of Oak Park

Adopt-A-Garden Program



City of Oak Park Adopt-A-Garden Program Overview & Goals

Purpose

To develop a well-organized Adopt-A-Garden Program that mobilizes a corps of volunteer gardeners to plant and maintain beautiful gardens in the parks and public spaces around the City of Oak Park.

Short-Term Goals

- ◆ Bring new gardeners' efforts
- ◆ Recognize gardeners' efforts
- ◆ Create communication links between gardeners & AAG Program

Long-Term Goals

- ◆ Expand the program with new gardens and gardeners

He who plants a garden, plants happiness.

Chinese Proverb

City of Oak Park
Adopt-A-Garden Program
GARDEN SITES THAT NEED ADOPTION

- ❖ Shepherd Park Sign (Church & Oak Park Blvd.)

- ❖ Shepherd Park Sign (Church & Northfield)

- ❖ Jackson Park Sign (Rosewood & Kenwood)

- ❖ Various Cul-de-sacs and Boulevard sections

City of Oak Park Adopt-A-Garden Program VOLUNTEER GARDENER GUIDELINES

Garden Assignment

- ❖ Volunteers are assigned on a first-come, first-served basis. Gardeners may suggest a site or choose from a list of available sites.
- ❖ Garden sites will be assigned after: the Guidelines and information packet have been reviewed and the confirmation sheet is returned to the coordinator. Otherwise, the garden will still be open for adoption.
- ❖ Once a site has been assigned, it is assumed the gardener will continue maintaining and planting the site until the coordinator is informed otherwise.
- ❖ If you do not wish to take on the full responsibility of a garden site, perhaps you would be interested in assisting another gardener at his/her site. Your interest and availability can be matched with another gardener.

Activities & Expectations

- ❖ Upon site adoption, each gardener will be asked to provide a copy of the garden plan to the coordinator. This can be a simple drawing of your plans, along with a list of plant material. Gardeners are encouraged to be creative with garden planting but be aware that there are many challenges in gardening public areas (i.e., drought, animals, pedestrian traffic, etc).
- ❖ Gardeners are encouraged to plant densely. A standard rule calls for twice as many plants as you would plant at home. For success in your gardening efforts, try to pick plants that are appropriate to the site conditions of your garden (i.e., tolerates drought, shade/full sun, etc.)
- ❖ In order to keep the gardens looking beautiful, gardeners should spend at least one hour per week watering, trimming, edging and deadheading. Gardeners are encouraged to have all clean-up and planting done by June 30 or earlier and to keep the garden planted all summer.
- ❖ Gardeners will need to supply their own tools to garden their sites. Gardeners will also need to purchase their own plant materials.

- ❖ If circumstances require you to take a temporary leave from your garden (i.e., health problems, extended travel, pregnancy, etc.), please notify the coordinator. We will try to find an assistant to maintain your site during your absence.
- ❖ If an entire summer passes with little to no activity at a garden site and the garden appears neglected, attempts will be made to contact the gardener to determine the situation. It will be at the discretion of the coordinator and the City to assess the situation and possibly reopen a garden for adoption, if necessary.

DPW Assistance

The DPW can provide gardeners with a number of services to support gardening efforts. At least two (2) weeks advance notification is advised, especially during the busiest summer months. Services include:

- ❖ Compost drop-off
- ❖ Woodchip drop-off
- ❖ Debris pick-up (anytime; place in paper bags at curb and call DPW)

Chemicals Policy

The City currently does not have a formal policy regarding the use of chemicals by volunteer gardeners.

- ❖ Pesticide usage is not permitted by volunteers.
- ❖ To inhibit weeds, we prefer you use natural, biodegradable methods, such as mulch.
- ❖ Regarding fertilizer, we prefer you use biodegradable, natural substances such as compost. Any additional use of fertilizers, such as slow release, non-toxic fertilizers, should be used sparingly and approved by the DPW.
- ❖ The following are excellent resources on this topic:

www.msue.mus.edu/oakland/hortag.html

The Garden Hotline (MSU Extension Service) – 248-858-0902

**City of Oak Park
Adopt-A-Garden Program
GARDEN PLAN**

The Adopt-A-Garden Program would like to keep a record of each gardeners' plan in order to better understand the types of plant material that are planted in the City each year. This will also assist us in case you need to take a leave of absence or need to retire your garden. This can be a simple sketch with a list of plant material. Mail To: DPW 10600 Captial, Oak Park, MI 48237. For questions, please call or e-mail Tiffany Brown at 248-691-7497 or tbrown@ci.oak-park.mi.us.

Garden Site: _____

Gardener: _____

Plant Material List:

Sketch of Garden Plan:

City of Oak Park
Adopt-A-Garden Program
CONFIRMATION FORM

I have thoroughly read the Adopt-A-Garden information packet and the Gardener Guidelines. I understand the expectations and requirements for adopting a garden on City property and am prepared to meet the guidelines.

Signature: _____

Date: _____