



CITY OF OAK PARK

CITY COUNCIL and PLANNING COMMISSION Recreation Master Plan Update

October 3, 2022

DESIGN PROCESS

UNDERSTAND

- Goal & priority setting
- Data gathering, analysis & benchmarking
- Project branding
- Overall vision & themes
- Stakeholder input
- Community engagement meetings (phase 1)
- Needs analysis survey

EXPLORE

- Design concept alternatives
- Community engagement meetings (phase 2)
- Plan drafting

REALIZE

- Concept refinement
- Long-term management recommendations
- Final plan & report
- Fundraising & project support

RECENT PARK DESIGN INPUT

- On-line preference survey
- Open Public Workshop
- Pop-up Workshop at Farmer's Market

WE ARE HERE

VISION, MISSION & GOALS

"Together, let's re-imagine a park system that's vibrant, equitable, flexible, sustainable & uniquely Oak Park."

Goals

Through the Elevate Oak Park engagement process, the following goals and objectives were formulated for the next five years. The goals and objectives are broad enough to encompass the needs expressed by residents, community stakeholders, City Officials, the Parks and Recreation Commission and staff. They also address observed deficiencies in the recreation resources in the area, demographic trends, current growth and forecasted development, the area's natural and cultural resources, and recreation trends. The mission is to determine what the community needs and wants, and work toward, over the long term, providing those facilities and amenities that will enhance the quality of life physically, socially, intellectually, culturally, economically and psychologically for everyone in Oak Park.

These goals and objectives formulated by the community are viewed as the cornerstone of the recreation planning process, in theory they form the framework for public and private decision making. The primary goals were developed based on the responses of residents that took part in the public engagement process and the Needs Analysis Survey.



COMMUNICATION & AWARENESS

- Elevate the Parks and Recreation brand through communication and engagement
- Enhance stewardship of parks and public spaces



PARTNERSHIPS

- Promote engagement with regional recreation entities and civic groups
- Maintain existing relationships and identify underutilized facilities that are prime for shared use or repurposing within the community



PUBLIC SPACES & FACILITIES

- Maintain and update city facilities in response to the changing needs of residents
- Ensure equitable access to quality public spaces
- Develop new facilities as needed, utilizing natural and sustainable design elements
- Establish a connected non-motorized trail system



MAINTENANCE AND OPERATIONS

- Ensure the long-term maintenance and provision of facilities and programs through the strategic planning and management of human resources and funding
- Enhance the long-term viability of park features



PROGRAMMING

- Provide a diversity of programs that are safe, welcoming, affordable, accessible, and of interest to Oak Park's diverse population
- Establish unique places through non-traditional and specialty parks and programming



FUNDING

- Identify financial resources to fund improvements to public space and recreation facilities
- Ensure that the funding available in the Capital Improvement Plan (CIP) is spent efficiently based on community need

PLANNING & PUBLIC INPUT PROCESS

Planning Process

The City of Oak Park began the development of this Parks and Recreation Master Plan in 2022, when the project team met with City Staff, the Parks and Recreation Advisory Committee and Stakeholder Groups to discuss issues and opportunities that are facing the Oak Park Recreation system. Stakeholder meetings addressed the seven priority areas, and each Stakeholder Group was comprised of residents who lived near, or frequently used the Priority Area.

Throughout the public engagement process, the project team conducted a series of analyses that explored demographics, recreation market trends, and community needs in order to vet community feedback with quantitative data. An existing condition analysis reviewed park metrics, facilities and operations to determine deficiencies in the recreation system. Benchmark cities of similar size were chosen in order to further analyze existing conditions and identify need-based gaps.

Analysis, stakeholder discussions, community meetings and public surveys heavily influenced the final concepts and recommendations of the Plan.

BY THE NUMBERS



7

Hybrid Stakeholder Meetings



250

Statistically-Valid Survey Respondents



4

Hybrid Community Engagement Meetings



4

Parks and Recreation Advisory Committee Meetings



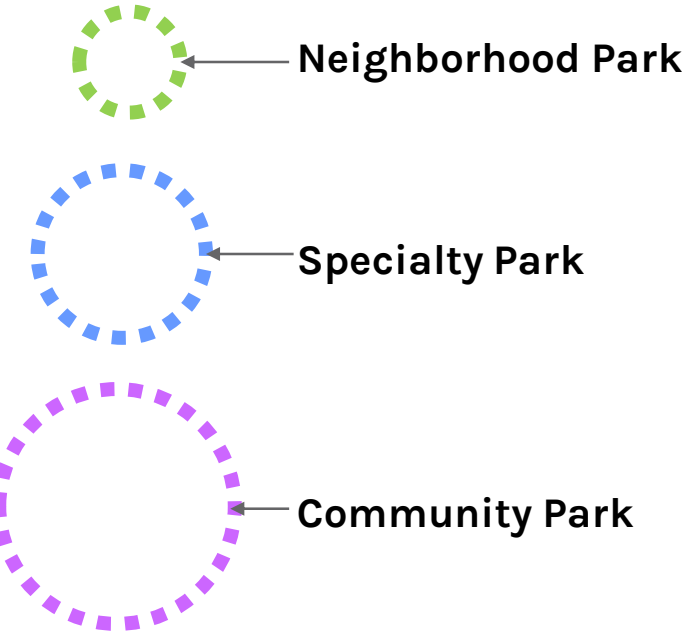
127

Concept Survey Respondents

FOR ALL PARKS, WE'RE HEARING:

- More **sidewalks** for barrier free access and fitness around the park.
- Improve **non-motorized connections** to neighborhoods and to the larger community.
- **Collaborate with schools** to make sure each park has adequate play and recreation opportunities for children and youth.
- Emphasize the role of parks as **community gathering places (with bathrooms!)**
- Recognize each park's **unique attributes and context** while creating engaging and inviting places.
- Enhance the **density of recreational activities** at the parks while **keeping in mind the neighborhood setting**.
- Keep open spaces **flexible** for a wide range of uses, but also, **provide more shade!**
- Need **consistent signage and messaging**.

PARK TYPOLOGY



TYLER PARK

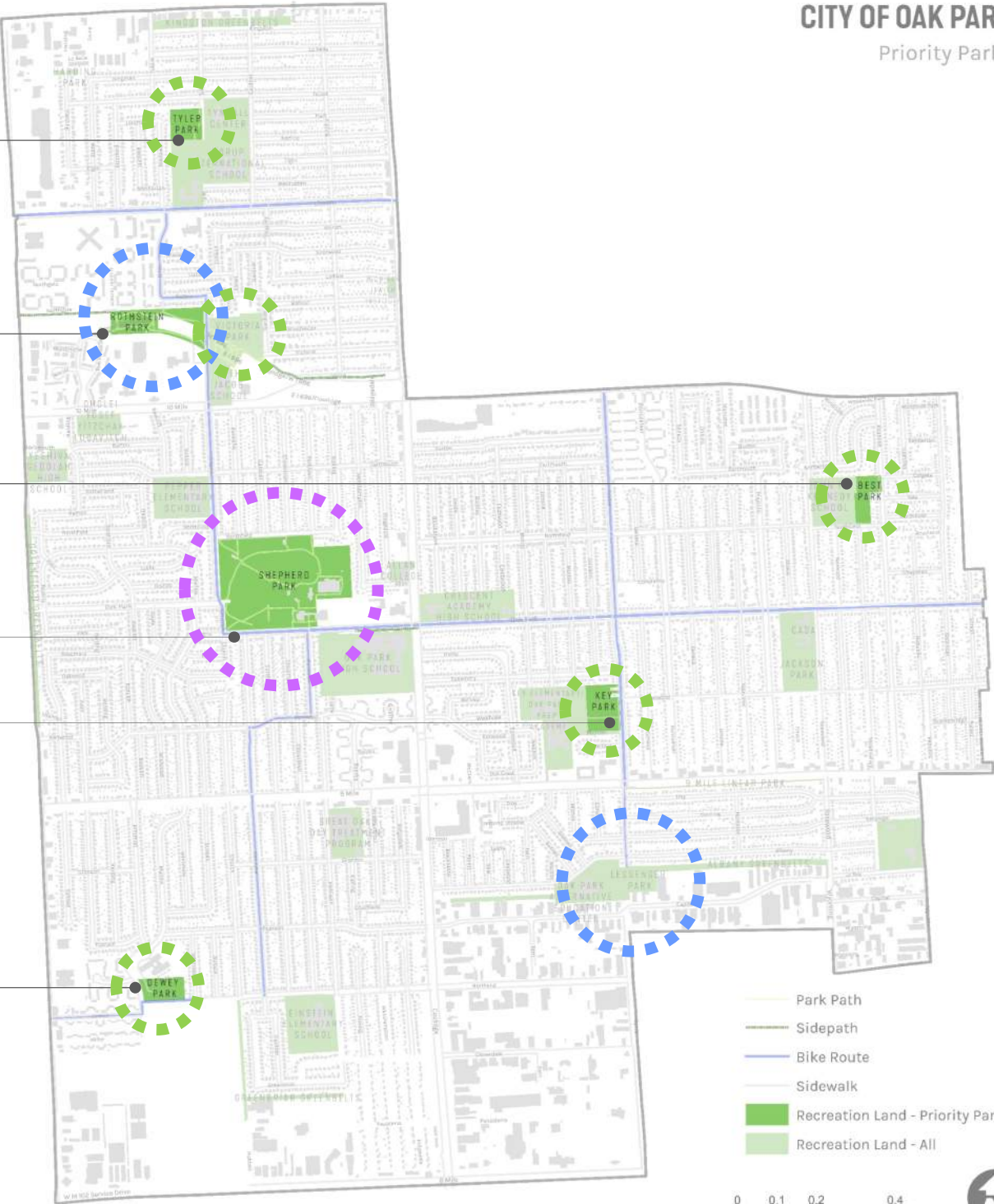
ROTHSTEIN PARK

BEST PARK

CITY COMPLEX/ SHEPHERD PARK

KEY PARK

DEWEY PARK





NEIGHBORHOOD PARKS



NEIGHBORHOOD PARK NEEDS



KEY PARK – WHAT WE HEARD



0 0.05 0.1 0.2 Miles



VISIONING TEAM

Vision: Soccer field park? Senior housing on city-owned parcels to the NE

BOTH

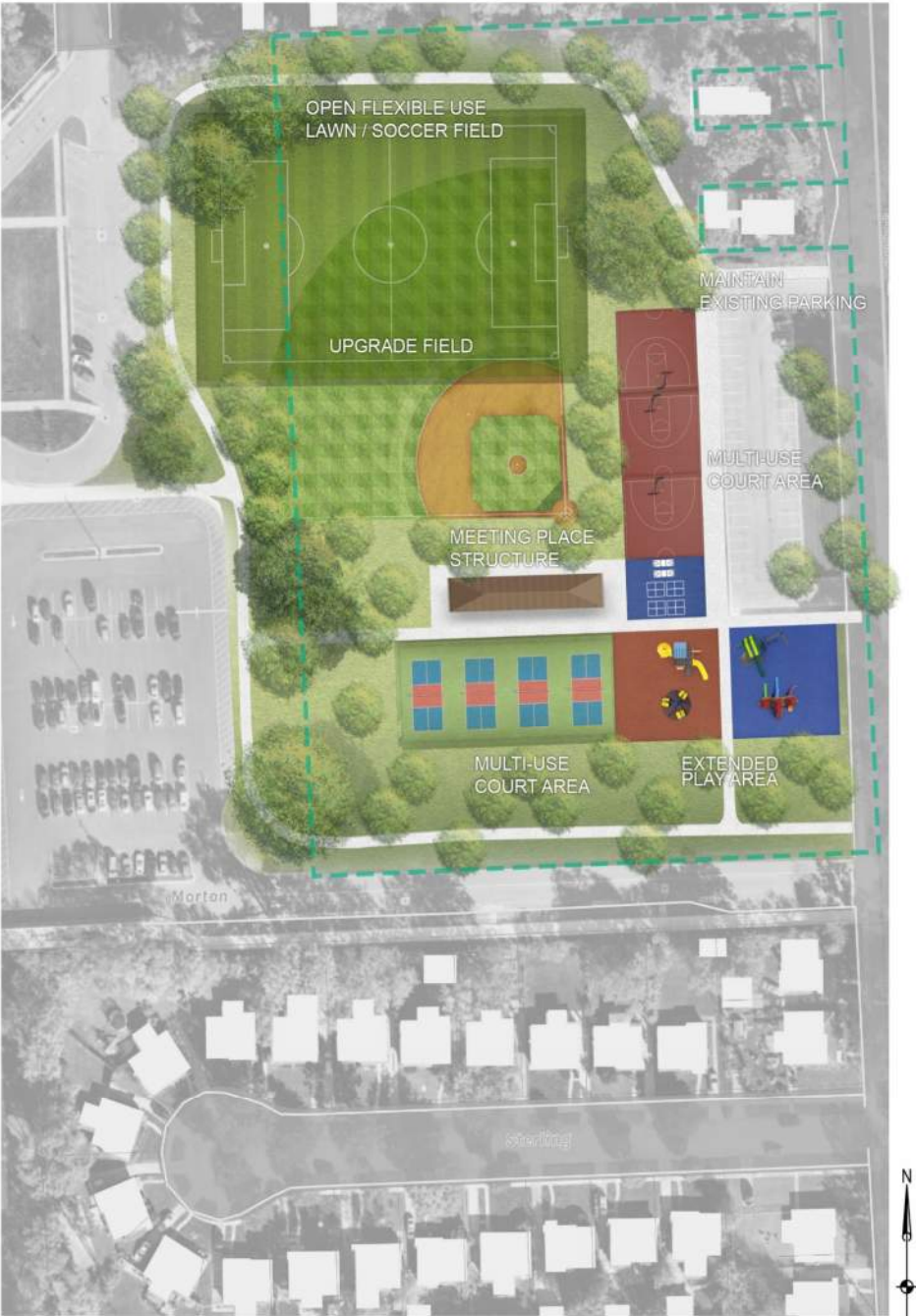
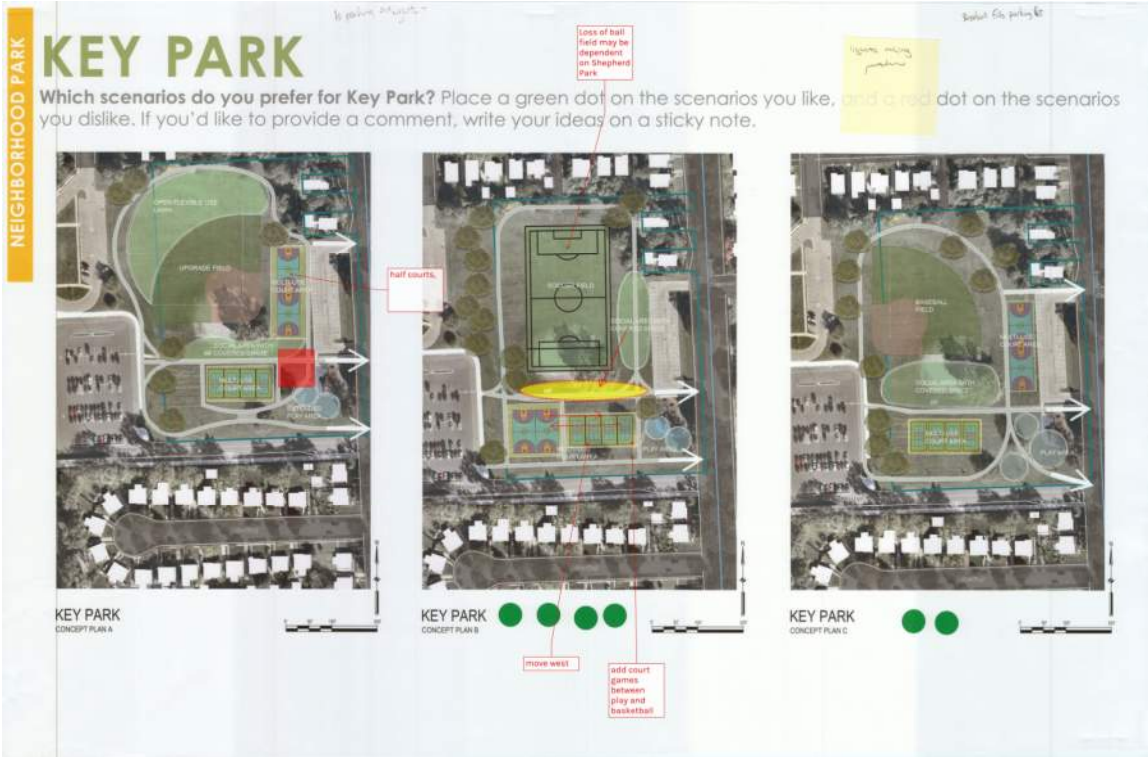
Assets: Open space for programming/events, playground
Needs: Connectivity opportunity

STAKEHOLDERS

Needs: Younger kid playground, playground maintenance, shade, places to sit, bike racks

KEY PARK

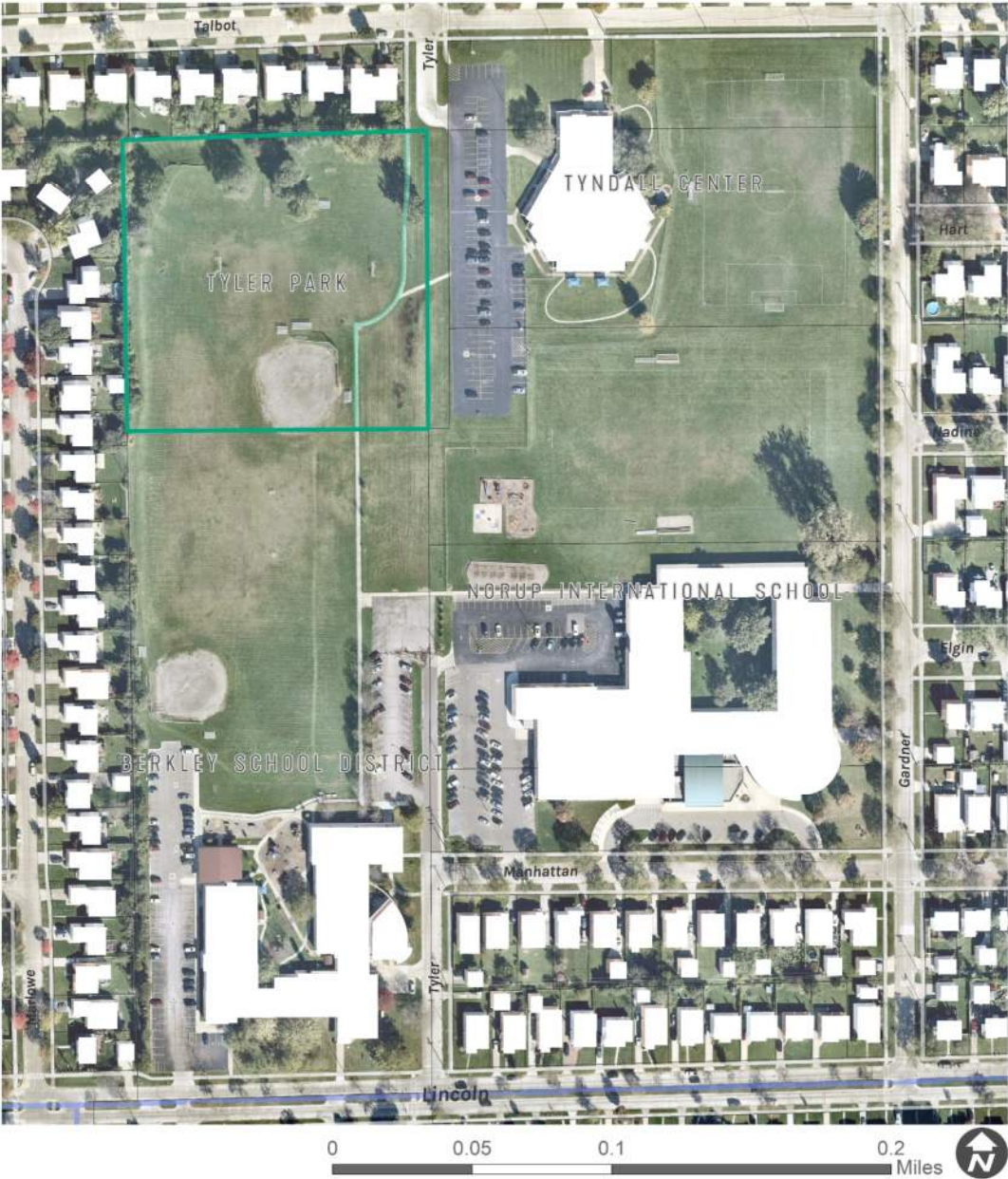
CONCEPT



KEY PARK: DRAFT MASTER PLAN



TYLER PARK – WHAT WE HEARD



VISIONING TEAM

Vision: Potential trailhead, concession/food truck for games, enhance the uniqueness of the space

BOTH

Assets: N/S connection, sledding hill, space for soccer/baseball games
Needs: N/S connection maintenance (widen sidewalk, ADA, flooding issue)

STAKEHOLDERS

Needs: Shade, places to sit/picnic area, signage, E/W connection with the school
Vision: Parking lot activities (4 square, painted on), firework/sledding event amenities (bathrooms, drinking fountains, campfire space)

TYLER PARK

CONCEPT



TYLER PARK: DRAFT MASTER PLAN

DEWEY PARK – WHAT WE HEARD



VISIONING TEAM

Vision: Establish community ownership to avoid maintenance issues

BOTH

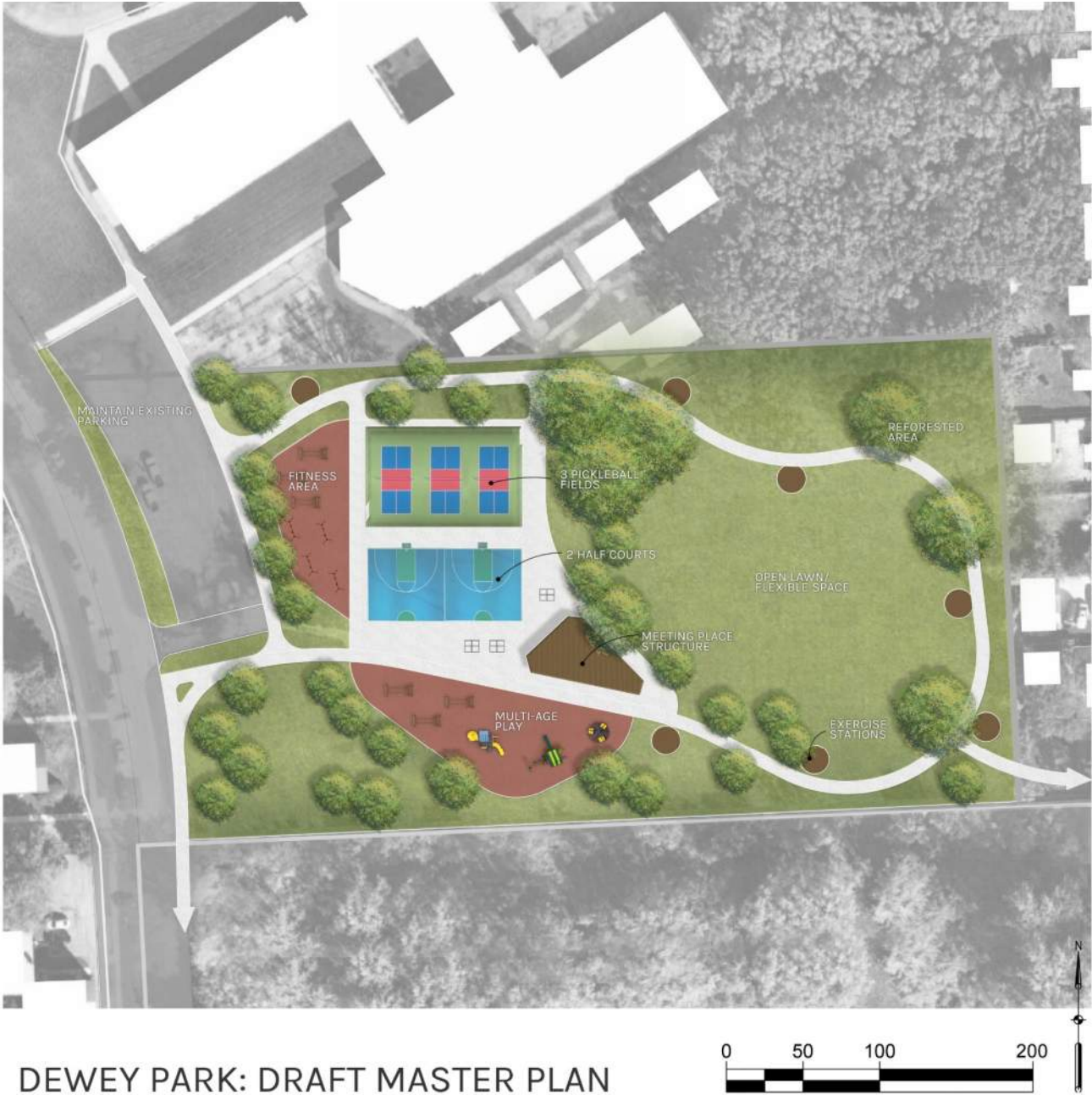
Assets: Connected to neighborhoods, bike routes
Needs: Park maintenance, play for all ages

STAKEHOLDERS

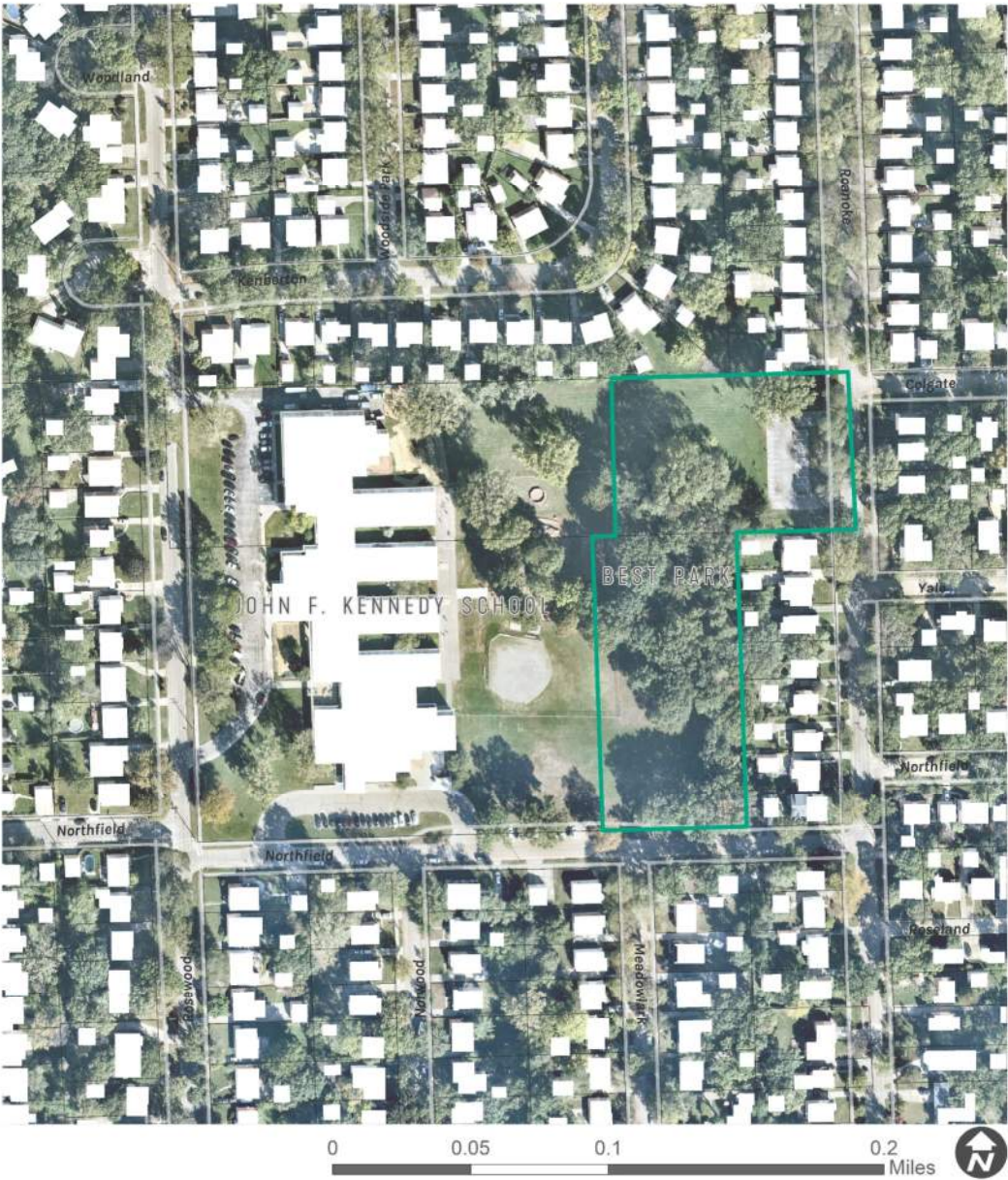
Needs: Places to sit, shade
Vision: Fitness areas/destinations, walking loop

DEWEY PARK

CONCEPT



BEST PARK – WHAT WE HEARD



VISIONING TEAM

Vision: Accessible tree house (grant), zipline

BOTH

Assets: Shade/natural feel
Needs: ADA accessible walking path, preservation of tree canopy, picnic/food truck amenity needs

STAKEHOLDERS

Needs: Street maintenance on surrounding streets (bikers), splash pad, naturalistic playground
Vision: Intramural fields, younger kid playspace



CONCEPT



BEST PARK: DRAFT MASTER PLAN



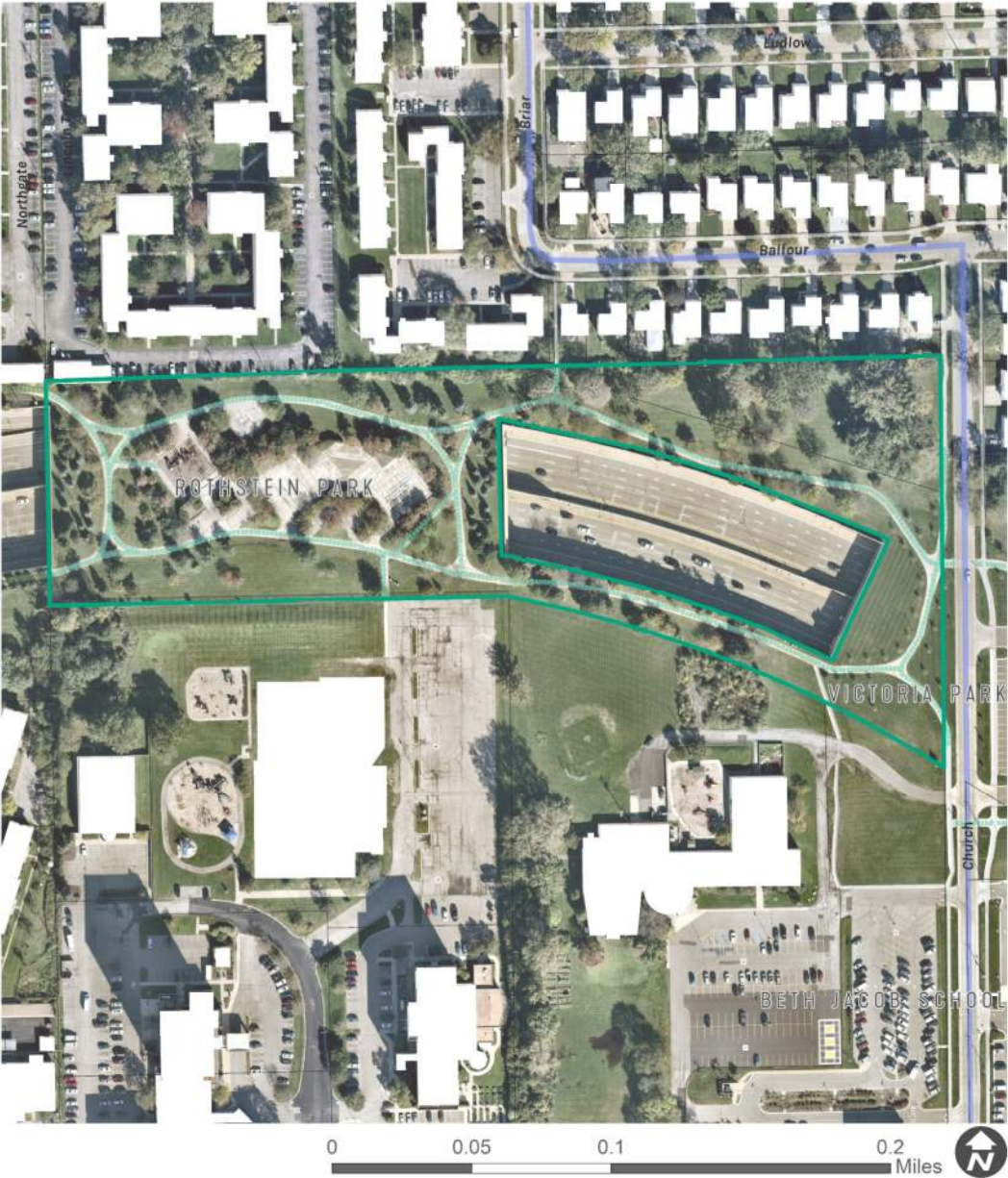
BEST PARK



A low-angle, black and white photograph of a modern skyscraper with a glass facade. The building's lines converge towards the top of the frame, creating a strong sense of height and perspective. The sky is filled with soft, textured clouds. The text "SPECIALTY PARKS" is centered in the middle of the image in a bold, white, sans-serif font.

SPECIALTY PARKS

ROTHSTEIN PARK – WHAT WE HEARD



VISIONING TEAM

Vision: Determine capacity to improve accessibility via car – if so, program accordingly. If not, redesign solely for non-motorized connection purposes

BOTH

Assets: Connector, Victoria Park nearby
Needs: Distinguish identity & redesign

STAKEHOLDERS

Needs: Improved access via car, lots of unused space
Vision: Continue to serve as a religious connection for the community

ROTHSTEIN PARK

CONCEPT



ROTHSTEIN PARK: DRAFT MASTER PLAN





COMMUNITY PARK

SHEPHERD PARK – WHAT WE HEARD



VISIONING TEAM

Vision:

Improved circulation, re-configure ice rink space, community center

BOTH

Assets: Pavilions, pool, library

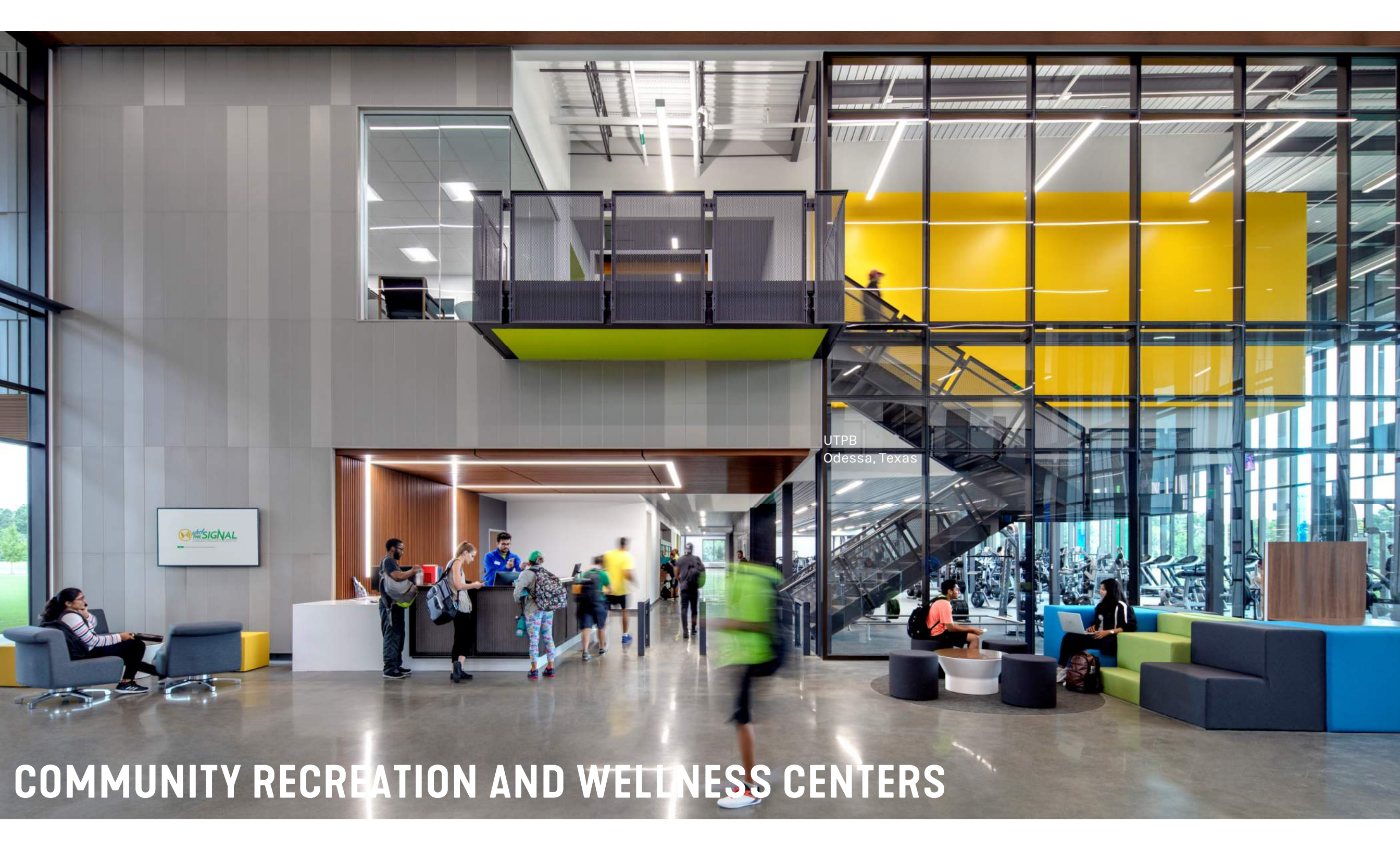
Needs: Restrooms, programming space for library, integrated uses, Outdoor/indoor walking loop, flexible courts (indoor/outdoor), outdoor gathering space, fitness space indoors/outdoors, indoor programming, kitchen, incubator spaces

STAKEHOLDERS



COMMUNITY PARK NEEDS

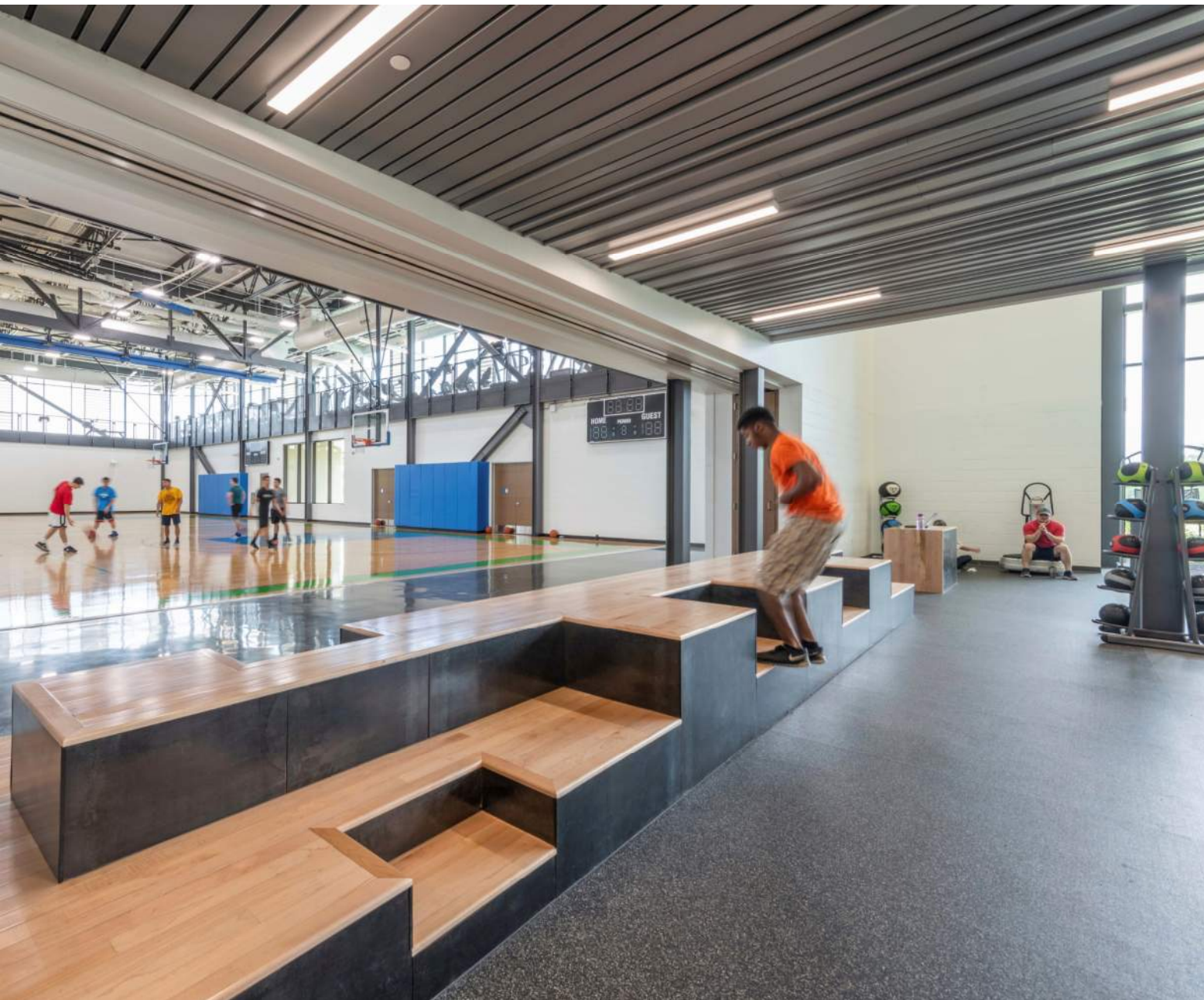




UTPB
Odessa, Texas

COMMUNITY RECREATION AND WELLNESS CENTERS

COMMUNITY RECREATION AND WELLNESS CENTERS



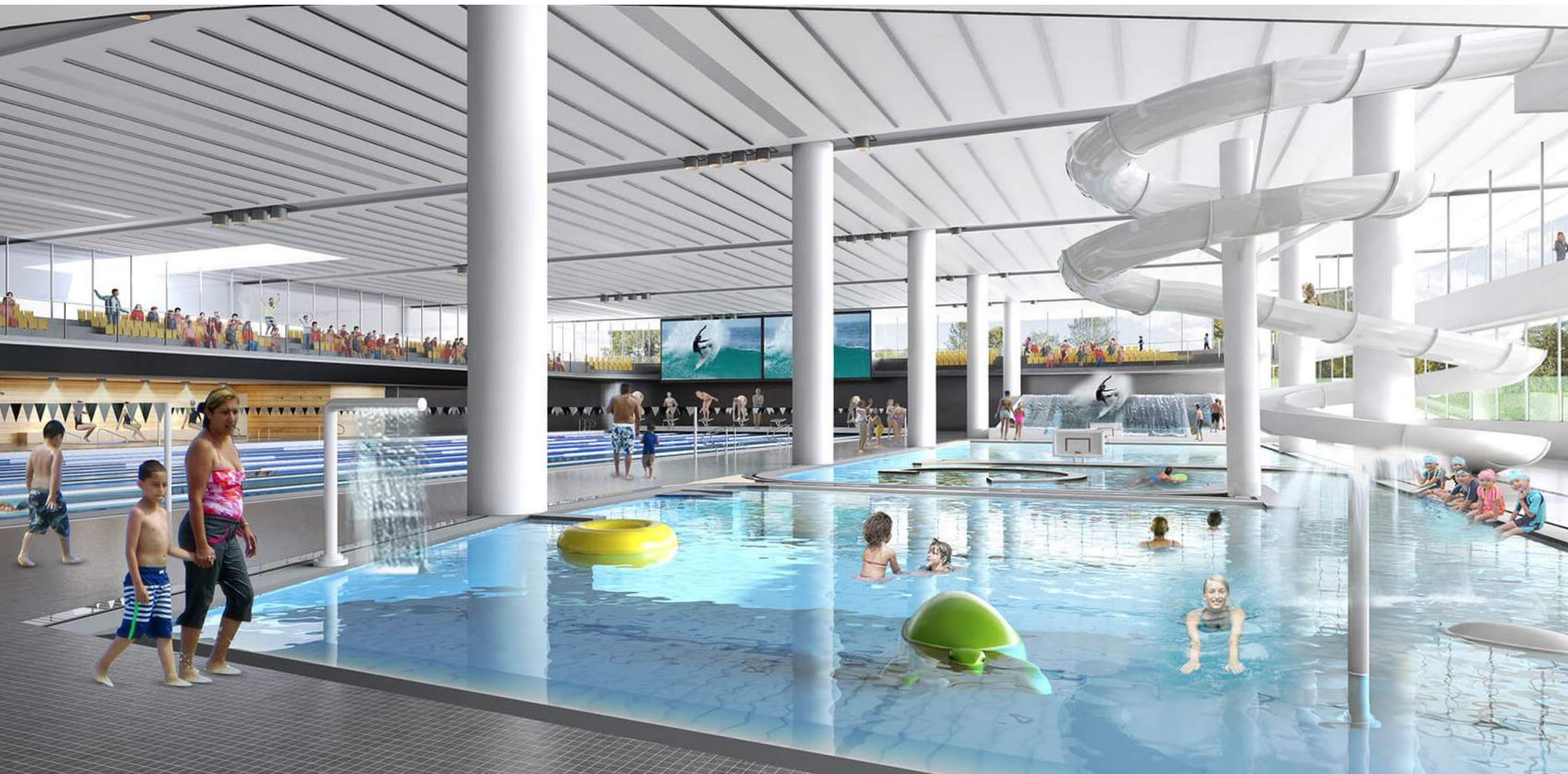
COMMUNITY RECREATION AND WELLNESS CENTERS



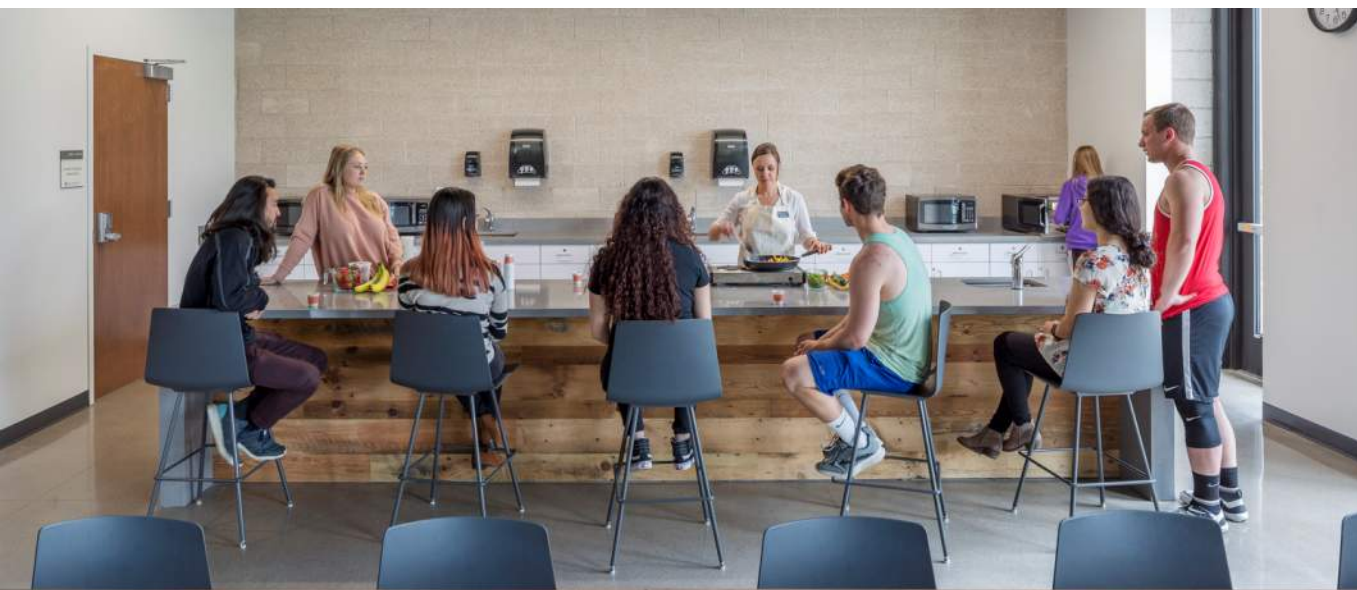
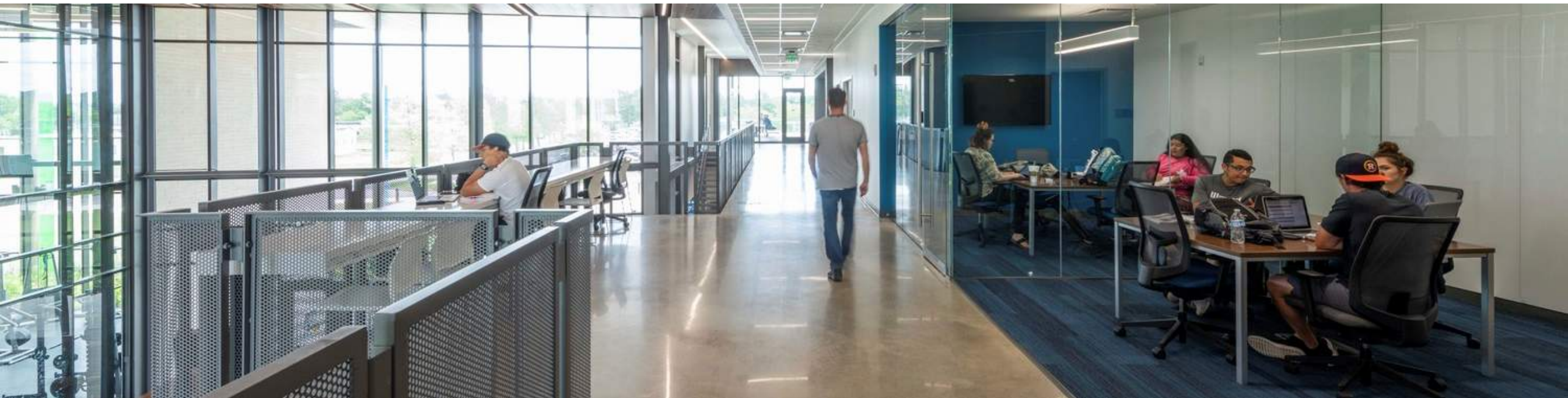
Plano Senior Recreation Center
Plano, Texas



COMMUNITY RECREATION AND WELLNESS CENTERS



COMMUNITY RECREATION AND WELLNESS CENTERS



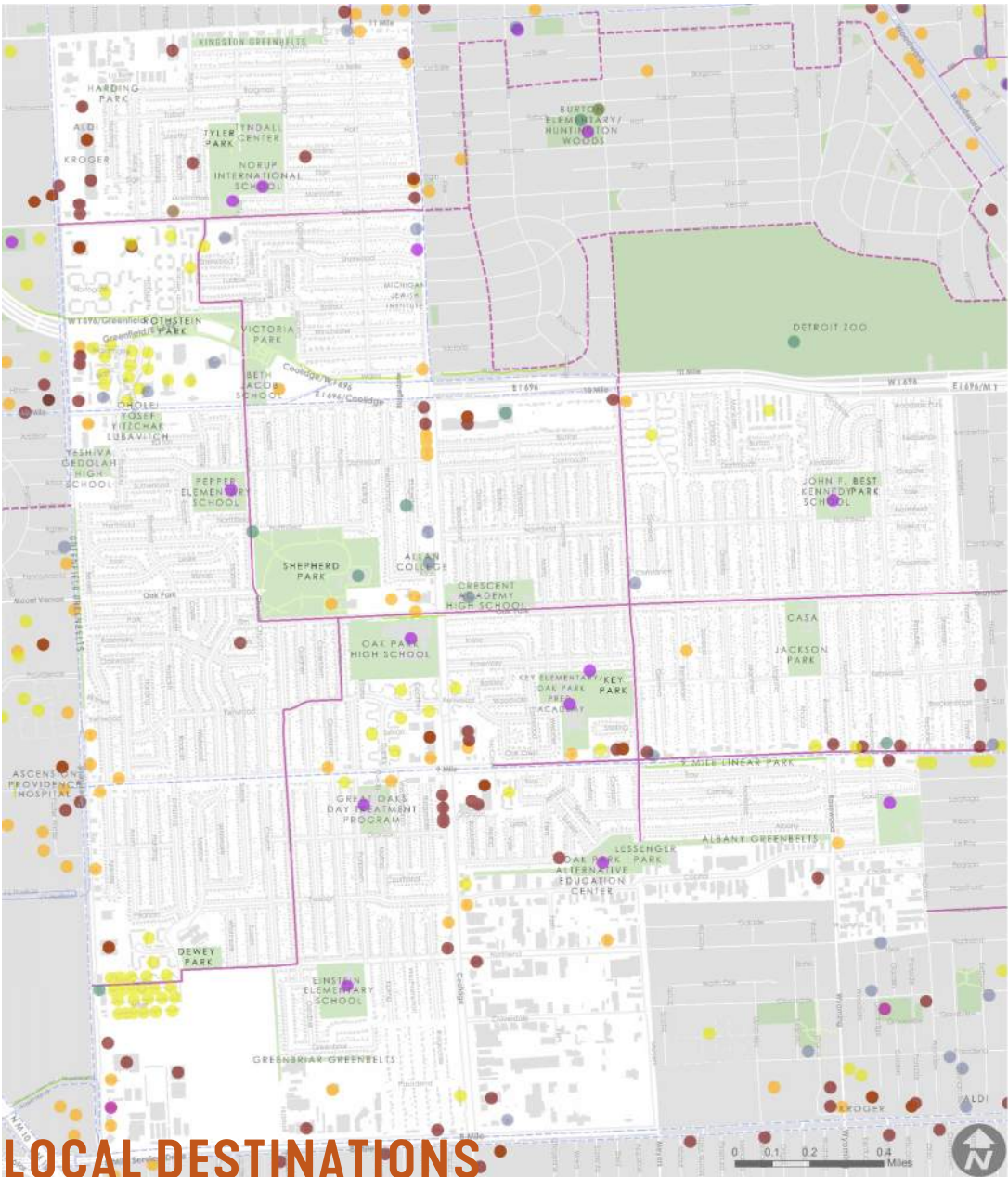
CONCEPT



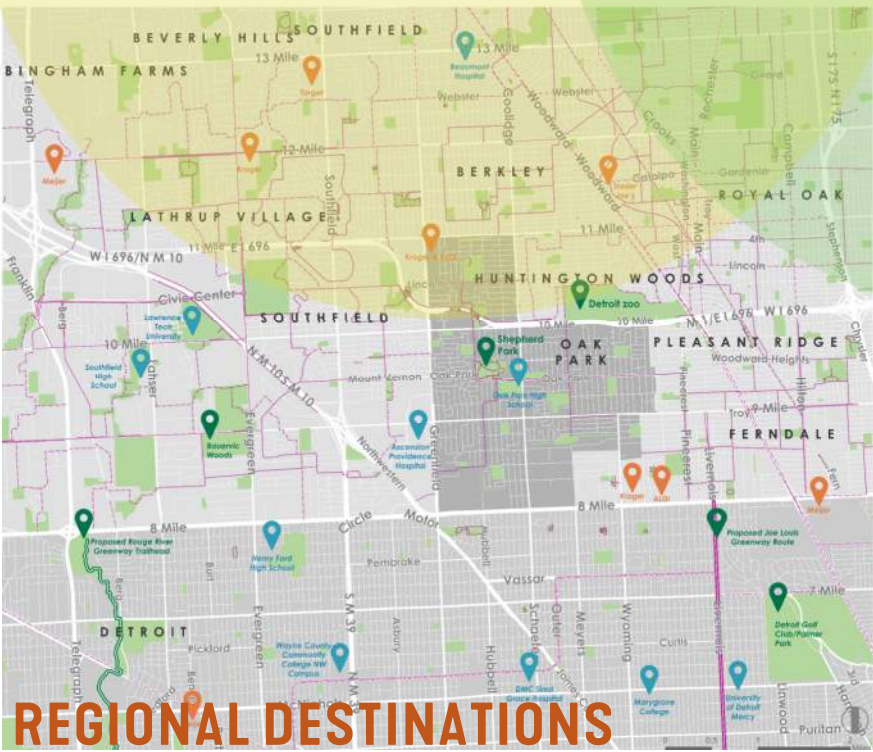


TRAIL SYSTEM CONNECTIVITY

TRAIL SYSTEM – WHAT WE HEARD



LOCAL DESTINATIONS



REGIONAL DESTINATIONS

VISIONING TEAM

Vision:
Greenway/trail
system building off
existing

BOTH

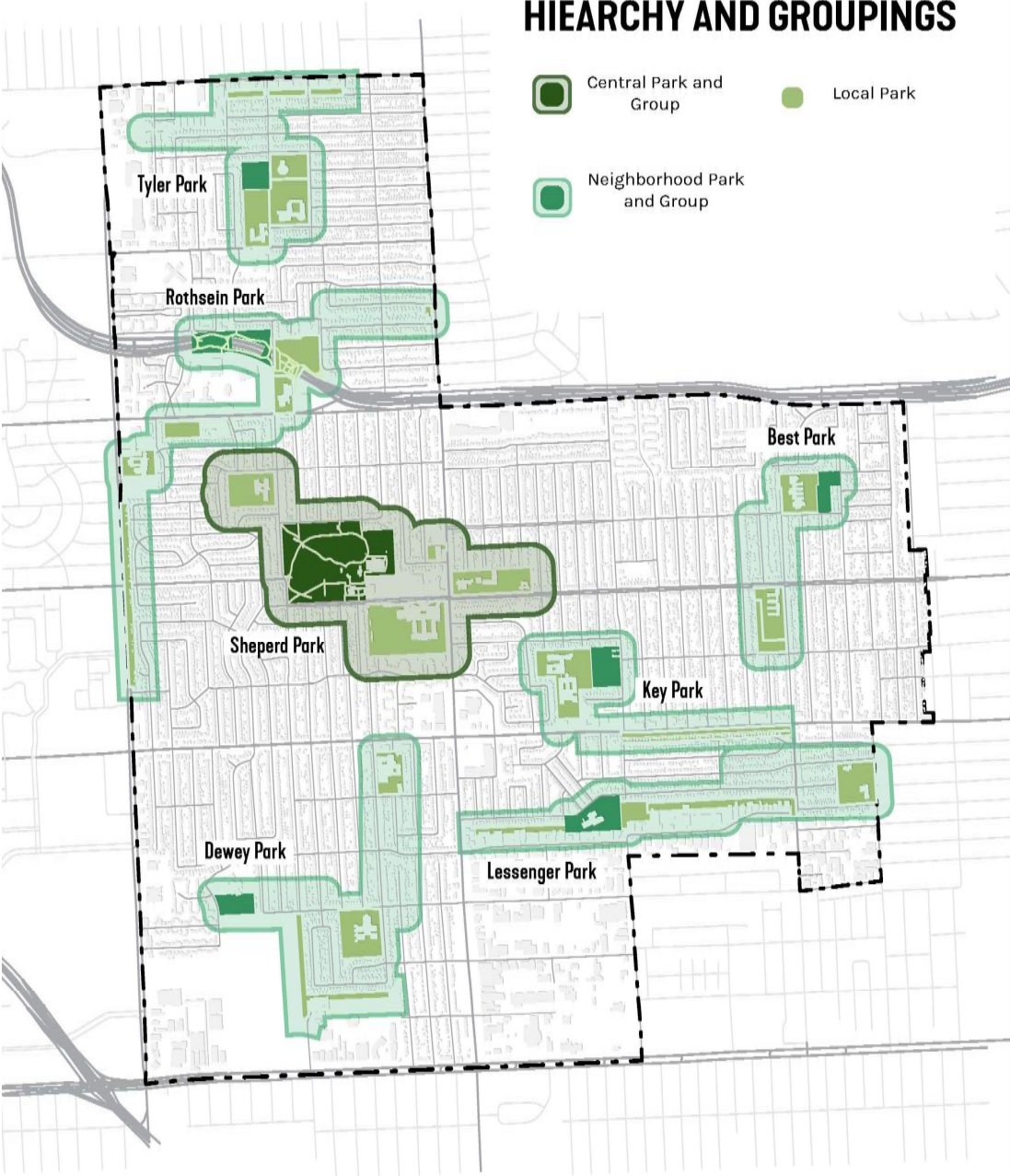
Assets: Existing
greenbelts &
routes
Needs:
Southside
connections

STAKEHOLDERS

Needs: Safe
crossings along
Coolidge, 10 mile,
696, 8 mile etc., 9
mile bike lane
extension,
streetscape
buffers, trail
amenities

Vision: Recreational
trail system

PARK CONTEXT

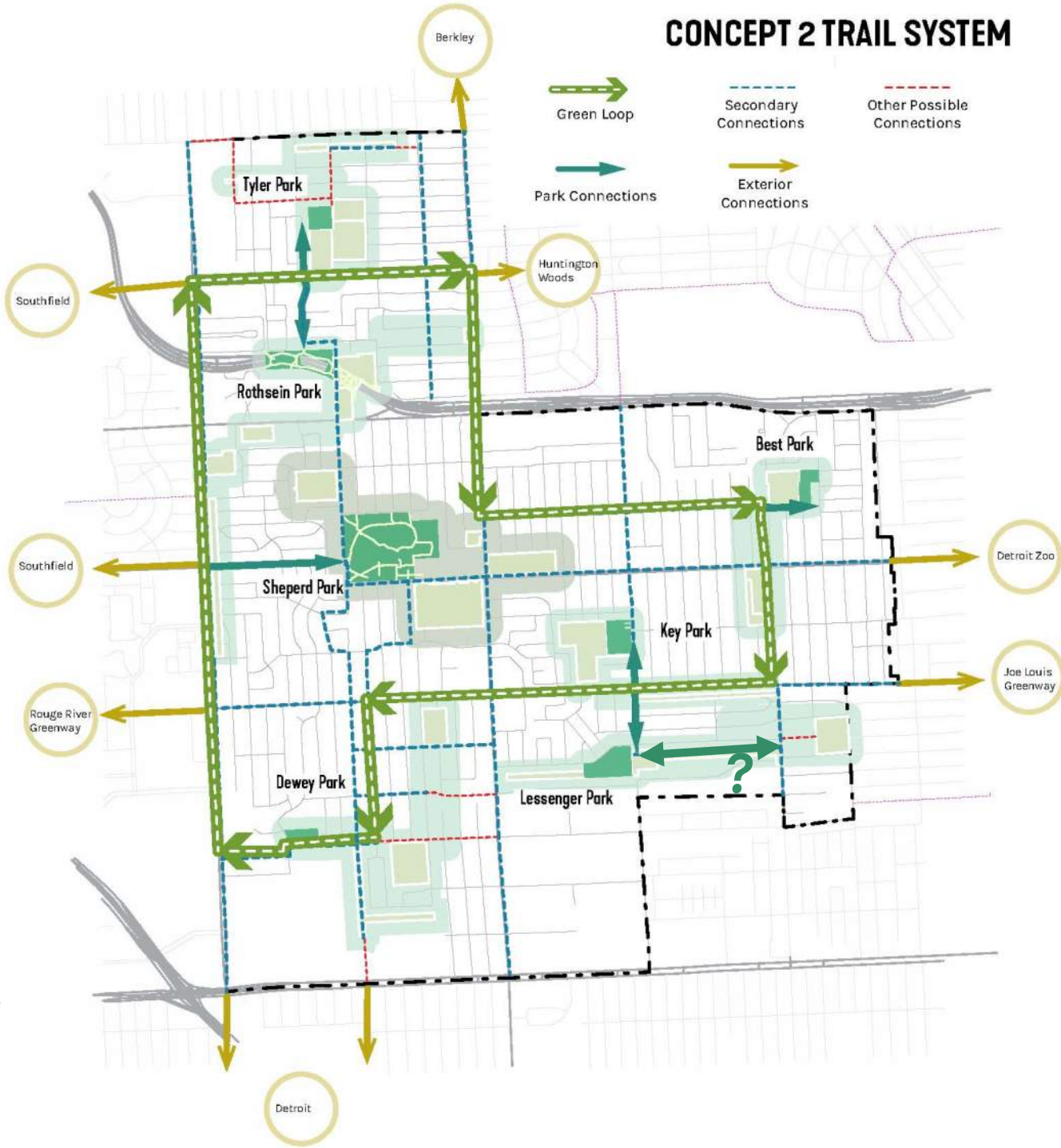


CONCEPT 2



Proposed Alternative Route

CONCEPT 2 TRAIL SYSTEM





NEXT STEPS

PROJECT NEXT STEPS/TASKS

- *Refine concepts based on today's conversation*
- Finalize concepts and draft report plan
- 30-day public review period in November
- Go for adoption in **December**

QUESTIONS AND COMMENTS

PARKS MASTER PLAN

PRIORITIES

PARKS MASTER PLAN

1. Rank the 5 neighborhood/specialty parks as to which are most important to improve

- Key Park
- Tyler Park
- Dewey Park
- Best Park
- Rothstein Park
- Other?

2. You consider upgrading Shepherd Park as-

- a. Critically important for the community, including a new recreation center
- b. Somewhat important, but could be scaled back and/or built over time
- c. Neutral-make incremental upgrades over time, but we don't need a new recreation center
- d. Not really important-maintain what we have

3. You consider creating a linked network of path as-

- a. Critically important for the community, and should be aggressively pursued
- b. Somewhat important, but could be scaled back and/or built over time
- c. Neutral-make incremental upgrades over time where it won't impact parking and traffic much
- d. Not really important-maintain what we have