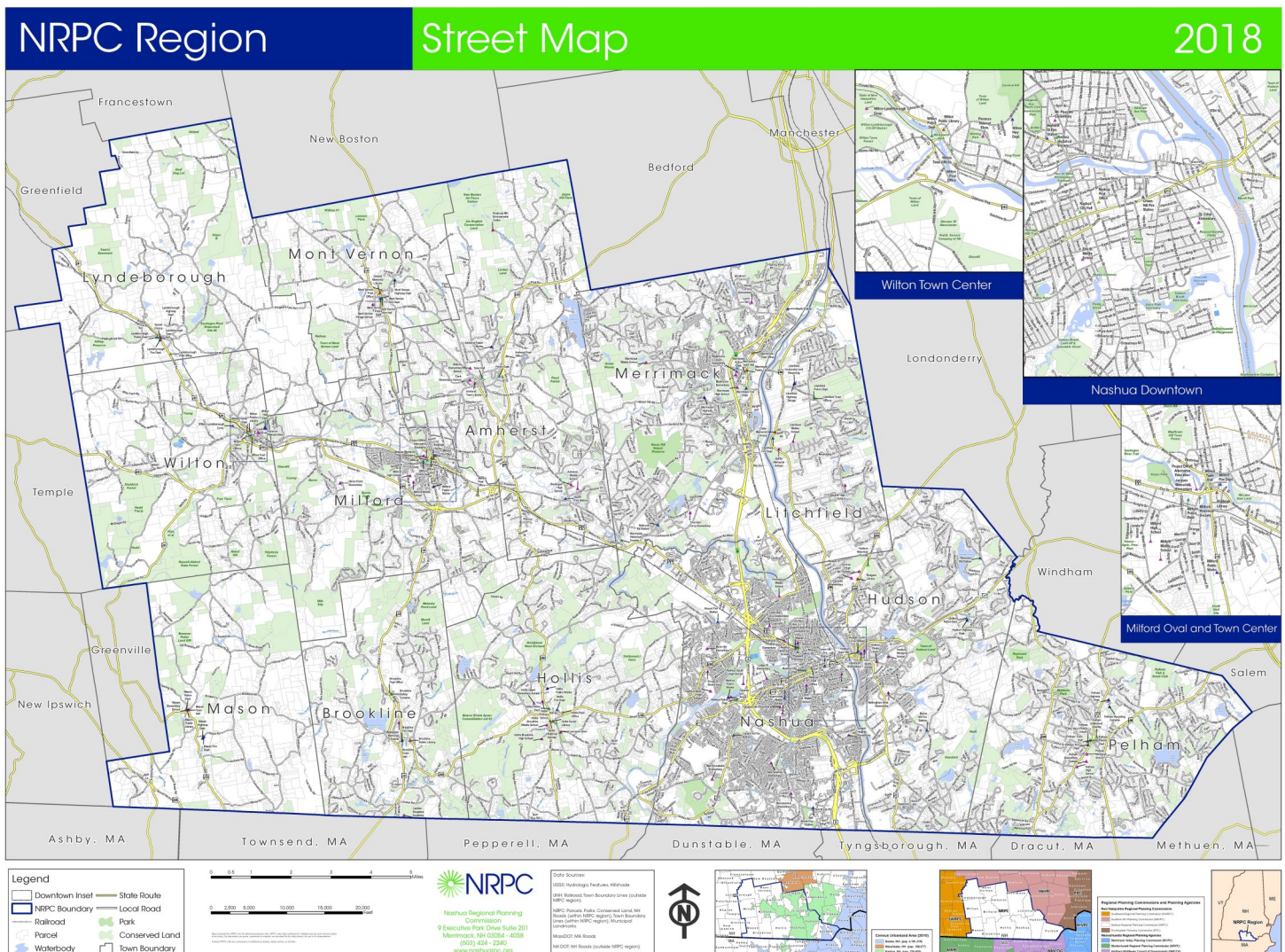


FY2019 Budget and Work Plan



Nashua Regional Planning Commission
9 Executive Park Drive, Suite 201
Merrimack, NH 03054

PH: 603-424-2240
FAX: 603-424-2230
www.nashuarpc.org



Like us on Facebook

<https://www.facebook.com/NashuaRPC>



Follow us on Twitter

<https://twitter.com/NashuaRPC>

TABLE OF CONTENTS

Proposed Fiscal Year 2019 Budget

NRPC Staff Contact Information.....	4
NRPC Commissioners	4
Fiscal Year 2019 Budget Narrative	5
Fiscal Year 2019 Proposed Budget-Resources.....	6
Fiscal Year 2019 Proposed Budget-Expenses	7

NRPC Work Program

FY2018 Program Achievements.....	9-10
2019 GIS Initiatives	11
2019 Land Use Initiatives	12
2019 Environmental Initiatives	13
2019 Transportation Initiatives	14

NRPC STAFF

Karen Baker-ext. 11 Program Assistant karenb@nashuarpc.org	Jay Minkarah, ext. 28 Executive Director jaym@nashuarpc.org	Andrew Smeltz-ext. 23 GIS Specialist andrews@nashuarpc.org
Ryan Friedman-ext. 20 Senior GIS Planner ryanf@nashuarpc.org	Cassie Mullen-ext. 17 Regional Planner cassiem@nashuarpc.org	Derek Stahl, ext. 14 Transportation Intern dereks@nashuarpc.org
Jill Longval-ext. 27 Senior Environmental Planner jilll@nashuarpc.org	Tanya Reinert-ext. 10 Finance/HR Administrator tanyar@nashuarpc.org	Joe Taranto-ext. 26 GIS Technician joet@nashuarpc.org
Stephen Meno-ext. 25 Regional Planner stephenm@nashuarpc.org	Sara Siskavich-ext. 21 GIS Manager saras@nashuarpc.org	Matt Waitkins-ext. 18 Senior Transportation Planner mattw@nashuarpc.org

COMMISSIONERS

AMHERST	Michael Dell Orfano Martin Michaelis Susan Ruch (Chair)
BROOKLINE	Jill Adams Tom Rogers
HOLLIS	Robert Larmouth Venu Rao
HUDSON	Jim Battis (Treasurer) Ethan Meinhold Roger Coutu Normand G. Martin
LITCHFIELD	Kimberly Queenan Tyler Perrin
LYNDEBOROUGH	Bret Mader
MASON	Louise Lavoie
MERRIMACK	William W. Boyd III Karin Elmer (Vice Chair) Margaret Morris Anant Panwalkar Tim Tenhave
MILFORD	Chris Costantino Janet Langdell George Skuse
MONT VERNON	Michael Fimbel
NASHUA	Michael O'Brien, Sr. Dan Kelly Roger Houston (A) Sarah Marchant Mary Ann Melizzi-Golja Thomas Lopez (A) Ernest Jette (A)
PELHAM	David Hennessey Harold Lynde
WILTON	Jim Kofalt Kermit Williams

FY2019 NRPC BUDGET NARRATIVE

Over the past year, NRPC staff has worked diligently to manage existing resources and maintain strong relations with our member communities and partner organizations. Though state funding and local dues have remained flat, additional sources of revenue have been secured through new local planning contracts and grants. New grant funded projects include development of a sourcewater protection strategy for drinking water in Amherst, Hollis, Hudson, Litchfield, Merrimack, Milford and Nashua. Local planning projects in the upcoming fiscal year include continued work on master plans in Hollis, Litchfield and Wilton, zoning ordinance revisions for Milford and Wilton, and a hazardous materials plan for Hudson. NRPC will also continue to provide planning and development review services for Litchfield, Mason and Wilton and for Hudson on an interim basis.

Our Environmental Planning Program will remain an important focus during FY19. NRPC will continue to staff the Nashua Region Solid Waste Management District (NRSWMD) and its Household Hazardous Waste Collection program. Due to adoption of a new inter-municipal agreement governing the NRSWMD, the District's budget is now included in NRPC's budget though District funds remain segregated. The Electricity Supply Aggregation Program will also continue to provide cost savings to participating communities. NRPC's robust GIS program will provide trail mapping and stormwater management mapping services for member communities including Nashua and Pelham while continuing to support our Transportation Program. NRPC's Transportation Program makes up the largest portion of our work program and budget for the coming year by a wide margin. In addition to maintaining our role as the region's Metropolitan Planning Organization, work will continue on key initiatives such as the Nashua Transit Expansion Feasibility study and an update to the Metropolitan Transportation Plan. As always, NRPC will also offer transportation services such as local intersection analyses, traffic counting and pavement management services to our member communities on request.

The FY19 Budget Revenue breakdown is:

Local Dues	\$ 163,000	11%
Local Planning Contracts	\$ 74,279	5%
Federal Contracts	\$ 10,700	1%
Grants and Other Income	\$ 142,448	10%
State Contracts	\$ 1,052,353	73%

The budget summary and work program are described in greater detail in the proposed budget spreadsheets and accompanying narratives on the following pages. As always, we greatly appreciate your strong support and participation in NRPC.

BUDGET ~ RESOURCES

		FY 18 ADOPTED	FY 19 ADOPTED
1	2000 Local Dues		
2	2000 Local Dues	\$ 163,000	\$ 163,000
3	Federal Contracts		
5	9080 HSEM Hazard Mitigation	\$ 5,000	\$ 1,200
6	9082 HSEM Hazard Mit. (Hol/Hud/Lit)		\$ 9,500
8	<i>Total Federal Contracts</i>	\$ 16,000	\$ 10,700
9	Grants		
10	6300 NRSWMD - HHW	\$ 60,000	\$ 137,800
14	7516 NH Housing - GIS Support		\$ 4,648
16	<i>Total Grants</i>	\$ 107,025	\$ 142,448
17	Local Planning Contracts		
18	100 - Electricity/Energy		
19	200 - Special Projects		
20	300 - GIS Special Projects		
21	400 - Municipal Services		
22	2111 Amherst Econ Dev Vision		\$ 501
23	2150 Mason CR		\$ 5,000
24	2175 Hollis Master Plan	\$ 10,000	\$ 2,905
24	2250 Litchfield CR		\$ 20,000
	2245 Litchfield CIP		\$ 443
	214X Hudson Circuit Rider		\$ 8,400
25	2361 MVD		\$ 3,000
	2401 Milford Sign Ord		\$ 2,000
26	2610 Wilton CR		\$ 18,000
27	2604 Wilton Downtown Ordinance		\$ 2,181
	2640 Wilton Master Plan 3		\$ 2,384
28	2560 Pelham Trail Mapping		\$ 3,966
	2565 Pelham MS4 Field Support		\$ 5,500
38	<i>Total Local Planning Contracts</i>	\$ 98,680	\$ 74,279
39	Other Income		
40	8000 Pubs/Map Sales	\$ 2,000	\$ 1,800
41	Interest Income	\$ 50	\$ 1,800
42	<i>Total Other Income</i>	\$ 2,050	\$ 3,600
43	State Contracts		
44	1000 OEP TBG	\$ 11,111	\$ 11,111
	9005 DES Source Water Protection		\$ 21,496
45	3000 DOT Highway Planning		
46	100 MPO ADMIN & TRAINING	\$ 72,402	\$ 79,542
47	200 POLICY & PLANNING	\$ 162,904	\$ 162,904
48	300 PUBLIC INVOLV & COORD	\$ 43,441	\$ 57,307
49	400 PLAN SUPPORT	\$ 253,407	\$ 253,407
50	500 TECHNICAL ASSIST & SUPPORT	\$ 191,865	\$ 227,013
51	3000 DOT Highway Planning	\$ 724,019	\$ 780,172
52	3xxx Transit SPR 5305	\$ 28,125	\$ 32,000
53	3xxx CTAP	\$ 9,400	\$ 9,400
54	3500 DOT 5310 SVTC	\$ 178,174	\$ 178,174
55	3500DOT-FF SVTC	\$ 20,000	\$ 20,000
56	2615 Safe Routes Wilton	\$ 7,500	
57	<i>Total State Contracts</i>	\$ 978,329	\$ 1,052,353
Total RESOURCES		\$ 1,365,084	\$ 1,455,880

				FY 18 ADOPTED	FY 19 ADOPTED
EXPENSES					
1	Audit			\$ 11,600	\$ 12,500
2	Bank Service Charges			\$ 250	\$ 250
3	Capital Equipment			\$ -	\$ 4,000
4	Dues & Subscriptions			\$ 12,000	\$ 12,000
5	Employee Benefits				
6	C Dental Insurance			\$ 11,043	\$ 11,092
7	C Health Ins.			\$ 95,334	\$ 75,610
8	C HSA Contribution			\$ 6,000	\$ 5,500
9	C LTD Insurance			\$ 2,500	\$ 2,500
10	C Retirement 401			\$ 28,057	\$ 23,756
11	C STD Insurance			\$ 6,600	\$ 6,600
12	P/R Taxes (Indirect)			\$ 54,846	\$ 55,978
13	<i>Total Employee Benefits</i>			\$ 204,381	\$ 181,036
14	Equipment Maintenance			\$ 1,000	\$ 1,750
15	GIS			\$ 18,000	\$ 18,860
16	Insurance			\$ 14,300	\$ 14,300
17	Internet Access/Telephone			\$ 5,000	\$ 5,000
18	IT Service			\$ 5,000	\$ 3,500
19	Janitorial			\$ 4,000	\$ 4,000
20	Legal Notices			\$ 1,500	\$ 1,000
21	Legal			\$ 5,000	\$ 4,000
22	Marketing and Outreach			\$ 4,000	\$ 1,000
23	Annual Forum			\$ 4,000	\$ 4,500
24	Misc			\$ 3,000	\$ 3,500
25	Office Expenses			\$ 9,000	\$ 15,099
26	Postage			\$ 2,000	\$ 2,000
27	Printing			\$ 8,000	\$ 6,500
28	Professional Services			\$ 211,690	\$ 268,435
29	Rent & CAM			\$ 77,500	\$ 77,500
30	Reserve Fund			\$ 13,417	\$ 44,564
31	Salaries			\$ 716,947	\$ 731,732
32	Staff Development			\$ 10,000	\$ 10,000
33	Small Equipment			\$ 4,000	\$ 6,154
34	Meeting Expenses			\$ 2,000	\$ 2,700
35	Vehicle Expenses			\$ 1,000	\$ 1,300
36	Mileage and Travel			\$ 6,500	\$ 8,700
37	Utilities			\$ 10,000	\$ 10,000
Total EXPENSES				\$ 1,365,084	\$ 1,455,880
			Balance (Revenue - Expenses)	\$ -	\$ 0



2018 ACHIEVEMENTS



2019 INITIATIVES



GIS

FY2018 ACHIEVEMENTS

-
- ◆ Economic Development Assessment Poster for Hudson
 - ◆ Suite of Trail Mapping Products for Merrimack Conservation Commission <http://www.merrimackoutdoors.org/>
 - ◆ Improved tax map hosting <http://www.nashuarpc.org/gis-mapping/tax-maps/>
 - ◆ Better tax map integration in MapGeo <https://nrpcnh.mapgeo.io>
 - ◆ Tax Mapping: Updates for Amherst, Hollis, Hudson, Litchfield, Lyndeborough, Wilton, and Mont Vernon, as requested
 - ◆ Tax mapping conversion from CAD to GIS and associated updates for Pelham
 - ◆ Spring Northeast Arc User Group (NEARC) Professional Poster Award for project and map showcasing SADES pedestrian infrastructure assessment along Merrimack D.W. Hwy http://www.nashuarpc.org/files/3415/2649/8769/DH_Highway_bikeped.pdf
 - ◆ GPS support for flagship properties managed by Pelham Conservation Commission
 - ◆ Local technical assistance in support of Brookline, Pelham, Hollis, and Merrimack's participation in the U.S. Census Bureau's Local Update of Census Addresses (LUCA) program
 - ◆ New transportation regional maps available in the NRPC Map Gallery <http://www.nashuarpc.org/gis-mapping/map-gallery/>
 - ◆ Trail maps to support the Wilton Conservation Commission's promotion of the Frog Pond and Frye Field properties
-

Land Use

-
- ◆ Wilton Master Plan: Historic & Cultural Resources Chapter
 - ◆ Milford Sign Ordinance Audit
 - ◆ Land Use Fact Sheets: www.nashuarpc.org/land-use-planning/fact-sheets/
 - ◇ Economic Development Tools & Incentives
 - ◆ Final Parks and Playgrounds Guidebook
 - ◆ Final Nashua Winter Farmers Market Feasibility Study
 - ◆ Final Nashua Mobile Farmers Market Feasibility Study
 - ◆ Brookline Melendy Pond Evaluation Committee Report
 - ◆ Brookline Land Use & Regulatory Policy Audit
 - ◆ Wilton CDFA Economic Development Pilot Projects
 - ◆ Hudson Economic Development Assessment
 - ◆ Amherst Economic Development Outreach Materials
-

Environmental

-
- ◆ Household Hazardous Waste Collection Program: www.nashuarpc.org/hhw
 - ◆ Regional Competitive Electricity Supply Project: <http://www.nashuarpc.org/energy-environmental-planning/energy-aggregation/>
 - ◆ Hollis Hazard Mitigation Plan Update: <http://www.nashuarpc.org/energy-environmental-planning/hazard-mitigation-planning/>
 - ◆ Renewable Energy Tool Belt: <http://www.nashuarpc.org/energy-environmental-planning/highlighted-projects/>
-

Transportation

Metropolitan Transportation Plan (MTP)

- ♦ MTP update project solicitation, Ten Year Plan (TYP) GACIT public hearing process
- ♦ [Annual Obligated Projects Listing](#)
- ♦ [TIP Amendments](#) and [MTP project list](#) and fiscal constraint analysis
- ♦ TransCAD highway network attributes and 2017 land use inputs updates
- ♦ 2045 land use inputs and future MTP projects coding
- ♦ MTP Operations & Maintenance needs and methodology
- ♦ [MTP update process online survey](#)
- ♦ 2018 MTP Preliminary Fiscal Constraint Analysis

Performance Based Planning

- ♦ [Adoption of Safety Target Performance Measures](#)
- ♦ Development of Crash Modification Factors

Local Technical Assistance

- ♦ Addition of Broad Street Parkway/Franklin St. interchange project into the TYP.
- ♦ FEE Turnpike four-lane widening needs analysis
- ♦ FEE Turnpike rail implementation traffic impact analysis
- ♦ [Merrimack DW Highway corridor bicycle and pedestrian plan](#)
- ♦ Wilton Safe Routes to School Travel Plan
- ♦ Litchfield and Brookline Fire Department response times travel modeling .
- ♦ Merrimack US 3/Bedford Road signal timing analysis
- ♦ Milford Oval safety improvements
- ♦ Wilton walkability and connectivity analysis

Traffic and Travel Time

- ♦ [Congestion Management Process corridor reports](#)
- ♦ [Highway Performance Management \(HPMS\) System traffic counts](#)
- ♦ Bicycle and Pedestrian traffic counting program
- ♦ Conducted traffic counts and air quality analysis for CMAQ projects submissions

Transit Support

- ♦ Statewide Coordinating Council for Community Transportation (SCC) and [Nashua Regional Coordinating Council \(RCC\)](#)
- ♦ Souhegan Valley Transportation Collaborative planning assistance
- ♦ Nashua Transit System (NTS) Transit Asset Management Plan.
- ♦ Nashua Regional Transit Expansion Feasibility Study scope and surveys

Administration and Freight

- ♦ MPO Master Agreement Update
- ♦ Draft TMA agreement with STBG/TAP funding allocation framework
- ♦ 2017 MPO Freight Program assessment
- ♦ Statewide Online Freight Survey

Committees

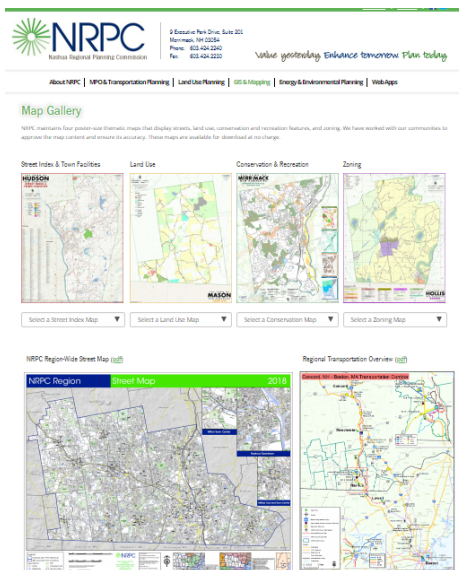
- ♦ Statewide Complete Streets Transportation Advisory Committee.
- ♦ Partnering for Performance NH
- ♦ NH Rail Transit Authority (NHRTA)

FY2019 GIS INITIATIVES

The NRPC GIS Group's primary responsibility is to support the data, mapping, and analysis needs of the Commission's transportation, land-use, and environmental programs. In order to best leverage the investment of public dollars in the GIS, NRPC also looks to extend the reach of its GIS to directly support its member communities. The following projects reflect some of NRPC's planned GIS initiatives for the next fiscal year.

Support for Long-Range Transportation Planning GIS and spatial analysis will play a pivotal role in the development of our Metropolitan Transportation Plan (MTP) update. GIS datasets form the background of our existing conditions assessment in that plan, as well as inform the calculation and reporting of new Performance-Based Planning requirements. GIS inputs for the regional travel-demand model include both current and future population, employment, and other demographics.

Mobile and GPS Asset Data Collection The next year will have a renewed emphasis on field work to support our GIS data development and analysis activities. NRPC is now under contract with the town of Pelham to support data inventory related to outfalls and other stormwater management activities required under the EPA municipal stormwater permit requirements and will also conduct a road surface management system (RSMS) project for the town of Hollis. NRPC is also planning to support the Town of Litchfield with both MS4 work and RSMS. NRPC is currently working with both Nashua and Pelham on trail inventory activities.



Map Gallery NRPC continues to maintain our flagship series of standard maps (Road and Town Features, Land Use, Zoning, and Conservation and Recreation) to each of our communities and several regional overview maps. These maps are updated once a year and area available for free download from the NRPC website.

Regional GIS Basemap Maintenance NRPC remains committed to maintaining and improving our GIS database. In addition to regular maintenance of datalayers such as parcels, road inventory, buildings, conserved lands, trails, and zoning and land use, NRPC will continue to build-out additional thematic layers including Intelligent Transportation System (ITS) assets, culverts and pedestrian infrastructure, and layers to support emergency preparedness/hazard mitigation.

Tax Maps NRPC continues to provide tax mapping services to eight communities including Amherst, Hollis, Hudson, Litchfield, Lyndeborough, Mont Vernon, Pelham and Wilton. Under NH law, communities are required to maintain tax property maps to support their assessment activities. The New Hampshire Department of Revenue Administration also aggregates the tax map data into a statewide, public-domain parcel fabric for use by the GIS community.



FY 2019 LAND USE INITIATIVES

Sourcewater Protection

As part of a grant from NH DES, NRPC will be working to determine improvements to local planning and emergency response protocols related to large spill events that may affect drinking water quality and public health. The focus area for the project will be Nashua, Hudson, Litchfield, Merrimack, Hollis, Amherst, and Milford. NRPC staff will summarize existing municipal planning protections, map existing conditions, and develop model zoning ordinance and model site plan regulations. During the process, input will be sought from local communities, municipal officials, and the Nashua/Manchester Stormwater Coalition.

Hudson Hazardous Materials Plan

NRPC is working with the Hudson Fire Department to update the Town's Hazardous Materials Response Plan. This plan is required by the Federal Superfund Amendments and Reauthorization Act of 1986, SARA Title III, also known as the Emergency Planning and Community Right-To-Know Act and provides guidance for hazardous materials incident planning. The Hudson Fire Department first drafted the hazardous materials response plan in 2002, and the subsequent update in 2011 is due to expire in September 2018. Once the plan is brought up to date, the Department will formally adopt the revised plan.



Milford Sign Ordinance Amendments

As a follow up to the Sign Audit conducted by NRPC during FY2018, NRPC will working with the Milford to prepare amendments to the town's existing sign ordinance to implement the necessary changes to ensure the ordinance complies with the Reed v. Gilbert decision .



Wilton Downtown Commercial Ordinance Revision

NRPC will assist the Town of Wilton in its efforts to develop a new Downtown Commercial District Ordinance. NRPC staff will work with a subcommittee of the Planning Board to review existing provisions, research best practices, and compose an ordinance for vote at Town Meeting in March 2019.

Wilton Master Plan

NRPC has been working with the Town of Wilton on an ongoing basis to update its Master Plan. The revision of the remaining chapters marks the last phase of the Master Plan update. The Housing and Population and Transportation chapters are currently under development and will continue into FY2019.

Hollis Master Plan

NRPC has been working with The Town of Hollis to update its Master Plan. NRPC staff have produced final drafts of its Transportation and Future Land Use Chapters, which are planned to be adopted in the fall. Revisions will also be made to the Housing and Population chapter.

Development Review and Planning Services

Part of NRPC's comprehensive services is to offer direct local land use planning assistance. Currently, the Towns of Litchfield, Mason and Wilton utilize contract planning services to directly assist the Planning Board. Services include providing assistance to applicants in submitting subdivision or site plan applications, written reviews of submissions to the Planning Board, attending hearings and work sessions to assist and answer questions, and supporting the Board and Town staff in preparing ordinance and regulation updates, notices, draft amendments and warrants for Town Meeting.

FY2019 ENVIRONMENT INITIATIVES

Household Hazardous Waste Collection Program

The Nashua Region Solid Waste Management District is comprised of Amherst, Brookline, Hollis, Hudson, Litchfield, Merrimack, Milford, Mont Vernon, Nashua, Pelham, and Windham. Each year, the District operates Household Hazardous Waste (HHW) collections for residents of its member communities and small quantity generators. NRPC provides staffing for all aspects of the District and serves as its fiscal agent. The HHW program provides a tremendous asset to the region. In 2017, a total of 1,808 households participated in the HHW collections and disposed of 98,284 pounds of waste. This was an increase of 4,899 pounds from 2016. If the HHW collections were not available, this waste may otherwise end up in the municipal waste stream or disposed of directly into the environment. For more information visit www.nashuarpc.org/hhw.



Electricity Supply Aggregation

The goal of the Nashua Region Electricity Supply Aggregation is to purchase electricity as a group from a competitive supplier at a lower rate than each member could receive on its own. By purchasing as an aggregation, municipalities and school districts can offer electricity suppliers a larger demand than if they each tried to purchase electricity individually. The larger demand, in turn, allows suppliers to offer a better rate to the aggregation than it could to individual members. In July, the aggregation will issue a RFP to procure 12 months of competitive electricity supply beginning in November 2018. From 2012-2017, the aggregation has saved \$1,608,931.



Mason, Hudson and Litchfield Hazard Mitigation Plan Update

Planning for natural disasters can reduce loss of life, injuries, and property damage. Hazard Mitigation Plans identify critical facilities and areas of concern throughout a municipality, analyze potential natural hazards and risks to these facilities, and prioritize mitigation measures to address the hazards. Municipalities must update their Hazard Mitigation Plans every five years in order to maintain eligibility for federal mitigation grants. In FY19, NRPC will work with Towns of Mason, Hudson, and Litchfield to complete an update to their Hazard Mitigation Plan.

Municipal Separate Storm Sewer System Permit Assistance



The new MS4 permit (Municipal Separate Storm Sewer System) was released on January 18, 2017 and while the 2003 MS4 permit expired in 2008, it remains in effect until the coverage is obtained under the reissued permit in July 2018. Communities were provided 17 months before the permit becomes effective to establish budgets and prepare. During FY 2018, NRPC will be available to assist municipalities with creating roadmaps of steps needed to comply with the new permit and prepare their Notice of Intent due on July 1, 2018. The five regional planning commissions (RPCs) with regulated communities are coordinating efforts to effectively and efficiently serve their communities that must respond to permit requirements. RPCs recognize the need to work with communities in the most cost effective ways. This may include coordinated community efficiencies, finding grant sources, or other creative means.

FY 2019 TRANSPORTATION INITIATIVES

Metropolitan Transportation Plan Update

NRPC is in the process of updating its long-range MTP to a horizon year of 2045. Project solicitation was conducted in early 2018, which provides sufficient time to evaluate these and previously included MTP projects for the corridor-based planning approach that considers performance targets. Existing conditions and future needs analysis are being updated. Safety and Transit Asset Performance Targets are incorporated into the evaluation process, as well as findings from the Congestion Management Process. The travel demand model is being re-calibrated to a 2017 base year and land use inputs are being projected to 2045 for future year model forecasts. The recommended list of projects will be fiscally constrained and subsequently ranked for submittal to NHDOT for inclusion in the next TYP.



Transportation Improvement Program

As the NHDOT completes the TYP process toward the end of FY 2018, the development of the State Transportation Improvement Program (STIP) proceeds through the Fall and possibly beyond, due to a recent U.S. Court ruling that may re-impose Air Quality Conformity for southern New Hampshire. At the latest a new NRPC TIP, that incorporates performance measures and targets will be completed early in calendar year 2019.

2021 – 2030 Ten Year Plan Process

Early in 2019 NRPC will convene a sub-committee of the TTAC to review and score projects from the MTP approved in December, 2018. Projects will be submitted to the NHDOT for inclusion in the TYP up to the sub-allocated funding amounts.

Transit Planning

NRPC staff will continue to work with the Nashua Transit System (NTS) to update route and ridership data, maintain and update route maps, assist NTS in the development of its Transit Asset Management (TAM) plan and provide other assistance as necessary.

Nashua Transit Expansion Feasibility Study

NRPC is in the process of conducting a study of evaluating the feasibility extending transit service beyond Nashua's borders. Potential service expansion includes NH 101A between Nashua and Milford; Continental Blvd. and Daniel Webster Highway in Merrimack and Route 3A in Hudson. Public outreach efforts in the form of surveys, workshops and charettes are being conducted. An Operational Analysis and Feasibility Review will be developed from data received and cost estimates developed for alternative service extensions. Potential funding sources for service plans will be developed. The study has a completion date of December 2019.



Regional Coordinating Council (RCC) and Statewide Coordinating Council (SCC)

During FY19, NRPC will continue working with its human service partners towards regional and statewide coordination of human service oriented transportation network in the region.

Highway Performance Monitoring System (HPMS) Traffic Counting

During FY19, NRPC will continue its responsibility for the NHDOT's Automatic Traffic Recorder (ATR) count program. Staff will perform 24-hour ATR counts per an NRPC established schedule, up to 10 of which will include vehicle classification counts. Count data will be provided to NHDOT each month throughout the counting season. At the request of NHDOT, NRPC will also conduct up to 10 intersection turning movement counts during the two-year contract period.

Congestion Management Process

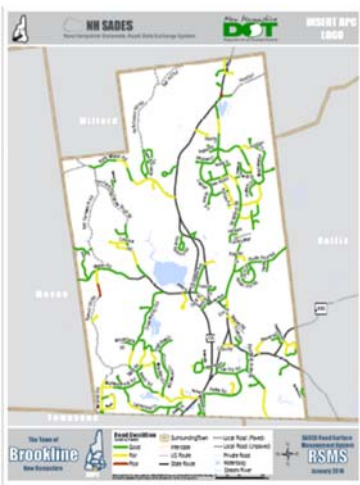
NRPC will make greater use of the National Road Performance Management Data Set (NPMRDS) in developing speed data for the National Highway System (the FEE Turnpike, NH 101, NH 101A, US 3 and NH 111). Data for other roadways will be obtained primarily through online data sources, which will be much more efficient than the previous travel time runs. Data will be documented in the MTP update and will be input into the TransCAD travel model for use in calibration.



Bicycle and Pedestrian Planning

During FY19, NRPC will continue outreach and planning efforts to expand bicycle and pedestrian facilities in the region. Staff will work cooperatively with NTS, NHDOT Bicycle Pedestrian Transportation Advisory Committee (BPTAC), Healthy Eating Active Living (HEAL), the Bike Walk Alliance of NH, Commute Smart NH, and other related groups and businesses to support cycling, walking and the use of the Transit System. NRPC will assess the effectiveness of new data sets and data acquisition techniques in support of active transportation programs throughout the region.

Road Surface Management System (RSMS)



During FY19, NRPC will develop and maintain road surface condition data, identification of priorities for repair and strategies to best facilitate improvements, general cost estimates, and planning for future maintenance needs. NRPC has contracted with the Town of Hollis to perform this task

during the summer of 2018 and would be able to conduct the project for one additional town during Spring 2019.

Souhegan Valley Transportation Collaborative (SVTC)

During FY19, NRPC will provide basic transit planning assistance to SVTC including interpretation of FTA funding requirements and applying for additional funding to implement the goals and objectives of the SVTC Strategic Plan.





Value yesterday.



Enhance tomorrow.



Plan today.

