



Program Highlights

In this Issue

- Intersection Analyses in Hudson and Pelham
- TIP / MTP Adoption
- UPWP
- Mapping Support for Town of Hudson, NH
- NRPC GIS Experts Hit the Road
- Continuous Improvement: NRPC's Live Maps App, now with 2015 Wildlife Action Plan Layers
- Household Hazardous Waste
- Renewable Energy Tool Belt
- Local Master Plan Updates

Letter from the Executive Director:

As we prepare to flip the last page of the 2016 calendar it seems appropriate to look back at the events of the calendar year. For the NRPC, 2016 was an opportunity to look inward and embark on a strategic planning process. This journey began in November of 2015 with data gathering, brainstorming, and conversations that involved all the Commission's stakeholders. The yearlong effort resulted in a Statement of Strategy. It discusses the historical and current mandates that define the Commission, its governance structure, its mission, vision, values, and core competencies and the current operational realities.

The process and Strategic Statement document provide a high-level strategic roadmap for the next five years. It also provides strategic priorities that can help NRPC Staff align their efforts where they will make the most impact and help guide the development of scopes of work to better address member community needs. Lastly, it provides a benchmark against which all Commission progress may be compared through time.

As we look ahead to 2017, the NRPC staff will endeavor to provide excellent services to meet the diverse needs of our member communities with the goal of establishing a universal understanding of NRPC's role, programs, and value as well as how NRPC can support community needs. Achieving such universal understanding of regional services and community needs requires active and regular two way communications.

The Strategic Statement will provide a lens through which staff and Commissioners can pursue new opportunities. As we move forward in 2017 work has already begun to address opportunity to build regional economic development capacity through local pilot project implementation. In addition, NRPC will be working closely with the NHDOT and member communities to establish a greater role in the programming of transportation projects in the Transportation Improvement Program. Finally, we will continue to invest in Geographic Information System Technology to ensure members have access to the latest available data and information.

As we plan ahead for 2017, the Staff at NRPC would like to thank you for your time, dedication and support and wish you a happy holiday season.

Tim Roache, Executive Director

NRPC STAFF

		Karen Baker-ext. 11 Program Assistant karenb@nashuarpc.org	Julie Chizmas, ext. 19 Senior Transportation Planner juliec@nashuarpc.org
Jen Czysz-ext. 31 Assistant Director jenc@nashuarpc.org	Ryan Friedman-ext. 20 Senior GIS Planner ryanf@nashuarpc.org	Jill Longval-ext. 27 Senior Environmental Planner jilll@nashuarpc.org	Stephen Meno, ext. 25 Regional Planner stephenm@nashuarpc.org
Cassie Mullen, ext. 17 Regional Planner cassiem@nashuarpc.org	Bill Parker, Ext. 16 Special Projects Planner billp@nashuarpc.org	Tanya Reinert-ext. 10 Finance/HR Administrator tanyar@nashuarpc.org	Tim Roache-ext. 28 Executive Director timr@nashuarpc.org
Sara Siskavich-ext. 21 GIS Manager saras@nashuarpc.org	Joe Taranto-ext. 26 GIS Technician joet@nashuarpc.org	Matt Waitkins-ext. 18 Field Data/Transportation Planner mattw@nashuarpc.org	

Intersection Analyses in Hudson and Pelham: NRPC is working to assist the Town of Hudson in its effort to reduce traffic congestion on Lowell Road. This past October, NRPC staff collected traffic volume data at the intersection of Lowell Road with Wason Road/Flagstone Drive and at intersection of Lowell Road with the Sagamore Bridge. The counts will be used to support intersection analyses of the existing and future peak traffic hour conditions. Results of these analyses will be used to identify possible solutions to congestion at these intersections and support an application for funding through an upcoming Congestion Management and Air Quality (CMAQ) program opportunity. The CMAQ program provides funding for transportation projects aimed at reducing congestion and improving air quality in the region.



In 2015, the Town of Pelham submitted a proposal for funds to improve the intersection of Mammoth Road and Sherburne Road through New Hampshire's 2017 – 2026 Ten Year Transportation Plan. The project was not selected for funding in the 2017 Ten Year Plan and has been added to the Nashua Region Metropolitan Transportation Plan for future funding considerations. The Town is taking steps to advance the project to a "shovel ready" status so that should funding become available, the project could be implemented with little delay. To that end, Pelham requested that NRPC conduct an analysis of the alternatives identified in the 2011 Road Safety Audit, and to include in the analysis the nearby intersection of Marsh Road (NH 111A) with Mammoth Road, which also experiences significant congestion during the morning and afternoon peak traffic hours.



TIP / MTP Adoption: The federal fiscal years (FFY) 2017-2020 Transportation Improvement Program (TIP) is a four-year work program that lists all regionally significant and federally funded projects, as required by federal transportation legislation. The TIP contains an agreed-upon list of specific transportation improvement projects and associated financial information for the NRPC Metropolitan Planning Organization (MPO). The TIP is the implementation vehicle for the long range Metropolitan Transportation Plan (MTP), programming funding for federal-aid roadway and federal-aid transit projects identified in the first four years of the MTP. The updates to the TIP and MTP occur every two years, following the signing into law of the State's Ten Year Transportation Improvement Plan. These updates are necessary to meet federal requirements and to ensure that the TIP and the Statewide TIP (STIP) reflect anticipated project schedules and maintain fiscal constraint. Throughout the last three months, the NRPC Transportation Technical Advisory Committee has reviewed and provided input on the TIP and MTP updates; adoption of the two documents will be sought in December, following a public hearing.

UPWP: Federal metropolitan transportation planning regulations require that MPOs develop a Unified Planning Work Program (UPWP) that outlines transportation planning priorities facing the region and identifies work tasks proposed for a 1 or 2 year period (NH develops a 2 year plan). The UPWP is developed in cooperation with the NHDOT, FHWA and FTA, with input from member communities and the Nashua Transit System on what those planning priorities are and how they should be addressed. Staff work completed under the UPWP is designed to:

- support the collaborative transportation decision-making process, engage the public and ensure compliance with federal regulations;
- gather data about the transportation system and its users;
- identify transportation needs within the region; and
- provide technical support and recommendations for improving the transportation system along roadway corridors, at intersections, on bicycle and pedestrian facilities, and on transit routes.

Upcoming Activities:

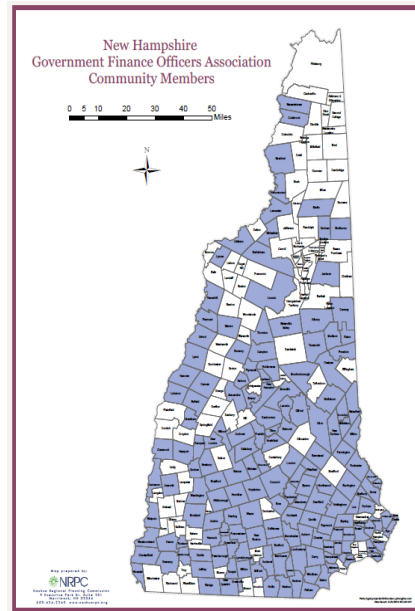
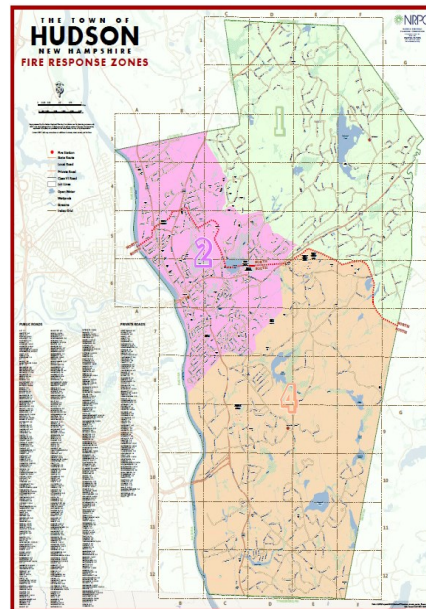
- Ten Year Plan Process
- Transportation Workshop-Nashua (TBD)

Ongoing Activities:

- Travel Demand Modeling
- Congestion Management
- RSMS SADES Pilot Program

Mapping Support for Town of Hudson, NH

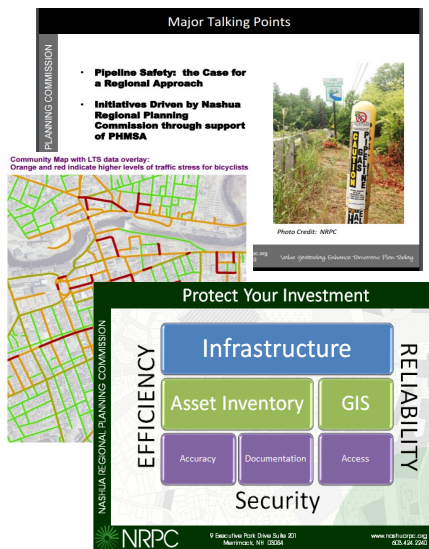
The NRPC GIS program is pleased to announce two new maps completed at the request of the Town of Hudson, NH. The first describes areas of Hudson that are primarily served by each of the Town's three fire stations (Library St, Burns Hill Rd, and Robinson Rd) and splits the Town into North and South sections to aid in cooperative response between the stations. The second describes statewide community membership in the Government Finance Officers Association; this poster was displayed at the New Hampshire Municipal Association's (GFOA) conference in November.



Level of Traffic Stress Data

Segments, approaches, and intersections are given an LTS score from 1 to 4, with 4 being the most "stressful" – or least suitable for bicyclists.

The five neighborhoods that show high LTS scores represent 50% of the Nashua population, and include areas with the greatest social, economic, and environmental disparities.



NRPC GIS Experts Hit the Road

This quarter NRPC GIS staff participated in several notable speaking engagements to share project successes and best practices with colleagues. **Sara Siskavich** travelled to New Orleans, LA to tell the story of NRPC's Technical Assistance Grant for Pipeline Safety, awarded by the Pipeline and Hazardous Materials Safety Administration, at the annual Pipeline Safety Trust conference. Later in the quarter, Ms. Siskavich delivered a talk on foundational aspects of GIS data management at the NHDES Workshop on Asset Management in Concord, NH. On October 12, 2016 at the 2016 Heal Conference, **Ryan Friedman** presented a workshop on his GIS-based Complete Streets Level of Traffic stress analysis in support of the Plan4Health Nashua project.

Continuous Improvement: NRPC's Live Maps App, now with 2015 Wildlife Action Plan Layers

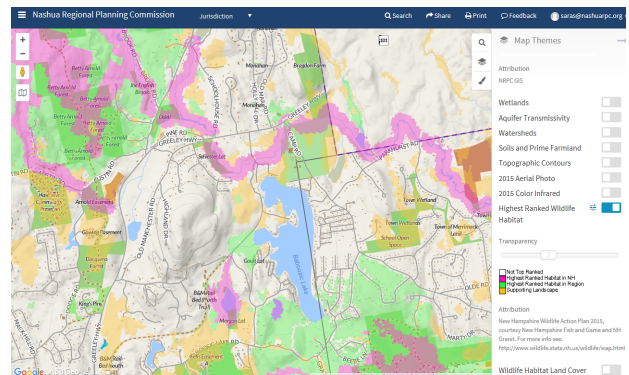
With the migration of NRPC's GIS viewer to MapGeo 2.0, data updates can be published as needed. This quarter, NRPC has worked diligently on data quality control that has resulted in better trails and conserved land tract data. Several conservation commissions in the region covered the costs to add into the app Priority Habitats and Habitat Landcover developed by NH Fish and Game.

Upcoming GIS Activities:

- Recreational opportunities mapping
- Modernization of NRPC's GIS Transportation Data Viewer
- Litchfield and Amherst Tax Map Updates
- Critical Infrastructure Mapping

Ongoing GIS Services:

- Regional GIS Data Development
- GIS Brownbag Series
- Interactive & Custom Online Mapping
- Travel Demand Modelling
- Downloadable Data and Maps



Household Hazardous Waste: NRPC conducts HHW collections each year on behalf of the Nashua Region Solid Waste Management District to allow residents to properly dispose of hazardous products. Seven collections were held during the 2016 HHW season. Five of the events were located in Nashua and one was held in Milford. New this year, the NRSWMD sponsored a second satellite collection event in Pelham. In 2016, a total of 1,736 households participated in the HHW collections District-wide. This was an increase from the 2015 total of 1,696 households. 37% of District-wide participants were first time attendees. The Solid Waste District manifested a total of 93,385 pounds of waste during the 2016 collection season. This is an increase of 8,231 pounds from the 2015 total. Paint continued to be the most common item received; 946 households District-wide (54.5%) brought paint to the 2016 collection events. Solvents and thinners were the second most common items disposed of (45.2%), followed by lawn and garden products (30.3%).

Renewable Energy Tool Belt: The Nashua Regional Planning Commission, in partnership with the Local Energy Solutions Work Group, is developing the "Renewable Energy Tool Belt." The Tool Belt will consist of a series of worksheets and short decision guides that will help communities to compare potential renewable energy systems for their municipal facilities. During Year 1 of the project, NRPC and its partners selected six municipalities across NH to participate in individual community meetings to capture the challenges and needs they face when making decisions regarding renewables. Selected communities included Nashua, Brookline, Pembroke, Lancaster, Orford, and Lebanon. These in-depth interviews were followed-up by a shorter survey administered to municipalities across NH. The short-form survey questions were used to drill deeper into specific themes that arose during interviews. Common barriers identified across all communities that participated included: limited time/resources to identify and pursue renewable energy options and a lack of benefits and renewable energy options. NRPC applied to the NH Charitable Foundation's Community Grants Program for a second grant to continue development of the Renewable Energy Tool Belt in 2017. A decision is expected by the end of the month. For more information, please contact Jill Longval, jilll@nashuarpc.org.

Local Master Plan Updates: NRPC has been working with Litchfield, Pelham and Wilton to update local master plan chapters each year. Litchfield has updated their Land Use and Population and Housing chapters and will formally adopt them at an upcoming public hearing. NRPC has created a town wide survey for Pelham to aid the Town's outreach efforts. Pelham is in the process of developing their Population and Housing chapter and will begin their Land Use and Transportation chapter in the next few months as well. Wilton has just completed Phase 2 of their Master Plan update, adopting their Natural Resources and Town Facilities and Services Chapters on November 2nd. NRPC staff will begin working with the Wilton Planning Board in the winter of 2017 to complete the final phase of the Master Plan update, which includes the Transportation, Housing, and Cultural and Historic Resources Chapters.

Land Use & Environmental Ongoing & Upcoming Activities:

- New NRPC Economic Development Services Programming
- Litchfield Capital Improvements Program
- Nashua Assessment of Fair Housing
- Hazard Mitigation Plans for Brookline, Pelham, & Mason
- Climate Health Action Plan
- Nashua Farmers Market Feasibility Studies
- Parks & Playgrounds Planning Guidebook
- Planning Board Services to Mason, Wilton & Litchfield
- Regional Competitive Electricity Purchase Aggregation

COMMISSIONERS

Nashua Regional Planning Commission, 9 Executive Park Drive, Suite 201, Merrimack, NH 03054

AMHERST: Martin Michaelis, Michael Dell Orfano, Susan Ruch | **BROOKLINE:** Jill Adams, Tom Rogers |

HOLLIS: Robert Larmouth, Venu Rao | **HUDSON:** Ted Luszey, James Battis, George Hall |

LITCHFIELD: Thomas Young, Michael Croteau | **LYNDEBOROUGH:** Steve Brown, Bret Mader |

MASON: Louise Lavoie | **MERRIMACK:** Karin Elmer (Treasurer), William W. Boyd III, Anant Panwalkar, Margaret Morris |

MONT VERNON: Michael Fimbel (Vice Chair) | **MILFORD:** Janet Langdell, Chris Costantino, George Skuse |

NASHUA: Daniel Moriarty (A), Dan Kelly, Roger Houston, Mary Ann Melizzi-Golja, Sarah Marchant, Mark Cookson, David Schoneman |

PELHAM: David Hennessey (Chair), Hal Lynde | **WILTON:** Kermit Williams, Jim Kofalt |

PH: 603-424-2240
FAX: 603-424-2230
www.nashuarpc.org