



Program Highlights

In this Issue

- Hazard Mitigation Plans
- 2017 Household Hazardous Waste Program
- Economic Development Planning
- Capital Improvement Programs
- Local Land Use Planning Efforts
- Project Update: Trail Mapping for Merrimack Conservation Commission
- What's Behind the Urban Heat Island Effect? A Story Map by NRPC
- NRPC Welcomes Andrew
- High-Resolution LiDAR Elevation Data
- FTA Funding Applications
- Traffic Counting Program

Letter from the Executive Director:

At our December 2016 meeting, the Commission reached consensus agreement on the Strategic Statement and Planning Process, paving the way for a high-level strategic roadmap for the next five years. As we plan for Fiscal Year 2018, I thought I would provide an update on two of the priority opportunity areas that we have been working to implement.

1. **Economic Development:** Support for economic development initiatives was a recurrent theme throughout the strategic planning process. Commissioners voiced this municipal need with near unanimity. Economic development programming is explicitly mentioned in the enabling RPC legislation, making it a sensible strategic area for NRPC. Lastly, economic development is aligned with the strategic goals of the New Hampshire Department of Transportation (NHDOT).

NRPC has been working to build staff capacity in Economic Development Planning through a Community Development Finance Authority L5 Tax Credit Grant that generates funding through the sale of tax credits. The funding raised through this grant will be used to build staff capacity and provide direct technical assistance to the Town of Wilton in implementing their Economic Development goals. As this project moves towards a successful conclusion we anticipate future opportunities, allowing other member communities to participate.

2. **Transportation Management Area Status:** As a Transportation Management Area (TMA) the NRPC now has programming authority over the allocation of Surface Transportation Program funds and Transportation Alternatives funds. Once a coordination process with neighboring MPOs and the NHDOT is defined, the NRPC would have a more immediate influence on the spending of these dollars which would usher in a new era of community empowerment and commissioner engagement.

NRPC has been working closely with Staff at the Southern New Hampshire Planning Commission and NHDOT to establish a process and timeline for implementation.

The TMA Programming Authority Process will be guided by a TMA Committee, which will serve as the joint NRPC/SNHPC MPO Policy Committee for STBG funds sub-allocated to the Nashua UZA. The TMA Committee will be advised by the NRPC and SNHPC Technical Advisory Committees.

By December 31, 2017, the TMA Committee will establish and adopt bylaws governing its organization, schedule, and rules of procedure. Chair and Vice-Chair responsibilities will rotate annually between representatives of NRPC communities and representatives of SNHPC communities.

Tim Roache, Executive Director

NRPC STAFF

		Karen Baker-ext. 11 Program Assistant karenb@nashuarpc.org	Julie Chizmas-ext. 19 Senior Transportation Planner juliec@nashuarpc.org
Jen Czysz-ext. 31 Assistant Director jenc@nashuarpc.org	Ryan Friedman-ext. 20 Senior GIS Planner ryanf@nashuarpc.org	Jill Longval-ext. 27 Senior Environmental Planner jilll@nashuarpc.org	Stephen Meno-ext. 25 Regional Planner stephenm@nashuarpc.org
Cassie Mullen-ext. 17 Regional Planner cassiem@nashuarpc.org	Bill Parker-Ext. 16 Special Projects Planner billp@nashuarpc.org	Tanya Reinert-ext. 10 Finance/HR Administrator tanyar@nashuarpc.org	Tim Roache-ext. 28 Executive Director timr@nashuarpc.org
Sara Siskavich-ext. 21 GIS Manager saras@nashuarpc.org	Andrew Smeltz-Ext. 23 GIS Specialist andrews@nashuarpc.org	Joe Taranto-ext. 26 GIS Technician joet@nashuarpc.org	Matt Waitkins-ext. 18 Senior Transportation Planner mattw@nashuarpc.org

Economic Development Planning NRPC and Central NH Regional Planning Commission (CNHRPC) were jointly awarded CDFA L5 Tax Credits to collaboratively build internal capacity to respond to member communities' economic development needs. This project will result in the identification of best practices for RPCs to provide economic development assistance from the initial plan development phase through the implementation phase. NRPC's ultimate goal is to build the Economic Development Services called for by municipalities and launch a new program, implementing the NRPC Strategic Plan. Currently, NRPC staff is selling tax credits in order to fund the project and initiate a pilot project focused on downtown Wilton in the spring and summer.



Capital Improvement Programs

NRPC has commenced working with the Town of Litchfield to assist with the development of the communities Capital Improvement Program (CIP). Litchfield joins Pelham who has asked NRPC to assist in CIP preparation for the last 3 years. Services for both communities include updating the CIP document to consider the most current demographic trends, preparing project forms for use by each community's departments, and incorporating all submitted projects into the program document and schedules after each committee completes their prioritization. These small project contracts save each community vital time on document and report preparation and extend the community's in house capacity.

Local Land Use Planning Efforts

In addition to Master Plan and CIP assistance, NRPC has also been working with several communities on a variety of different planning projects. Over the course of 2016 staff assisted Mont Vernon with the preliminary planning work to begin drafting new zoning for their town center. Staff assisted the Town of Brookline in researching past policy actions and work to address seasonal camp leases along Melendy Pond. Lyndeborough's Board of Selectmen, in an effort to understand the community's need for additional wetland protections, invited NRPC to facilitate a joint session of the Selectmen, Conservation Commission and Planning Board. For more information on how NRPC can assist your community, contact Jen Czysz at jenc@nashuarpc.org or 424-2240 x31.

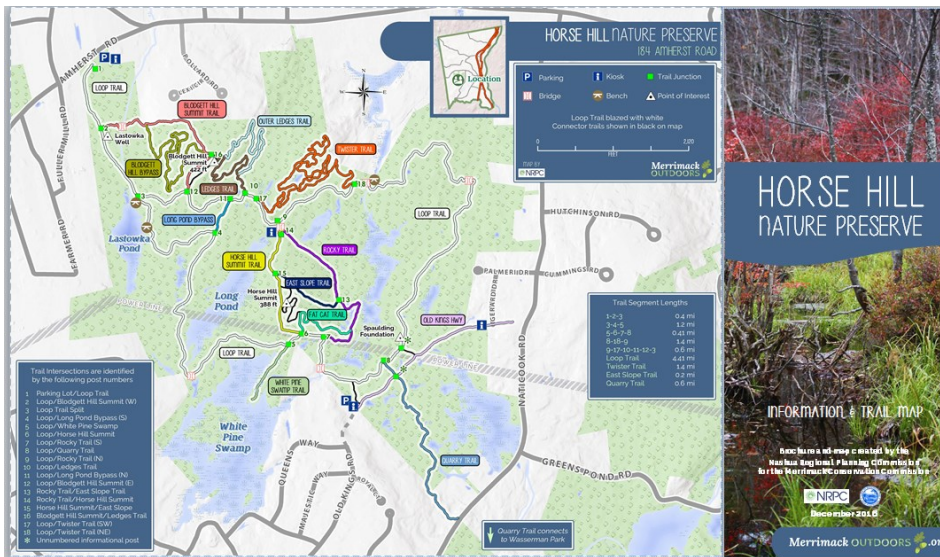
2017 Household Hazardous Waste Program The first collection of 2017 will be held on Saturday April 22 from 8 AM to 12 PM at the Nashua Public Works Garage, 9 Stadium Drive, Nashua. Residents of Amherst, Brookline, Hollis, Hudson, Litchfield, Merrimack, Milford, Mont Vernon, Nashua, Pelham, and Windham are welcome to attend. There is a \$10 user fee per vehicle for up to 10 gallons or 20 pounds of waste. A variety of common HHW products are accepted at the collection events, including non-latex paints, solvents, oven cleaners, pool chemicals, pesticides, fertilizers, drain openers, and auto chemicals. Remember, latex paint and medications are not accepted at collection events. For a complete schedule of events and list of accepted items, visit www.nashuarpc.org/hhw or call 603-424-2240.



Hazard Mitigation Plans Planning for natural disasters can reduce loss of life, injuries, and property damage. Hazard Mitigation Plans identify critical facilities and areas of concern throughout a municipality, analyze potential natural hazards and risks to these facilities, and prioritize mitigation measures to address the hazards. Potential natural hazards in the NRPC region include climate change, drought, earthquake, extreme temperatures, flooding, fluvial erosion, hurricane, severe thunderstorm, severe winter weather, tornado, and wildfire. Municipalities must update their Hazard Mitigation Plans every five years in order to maintain eligibility for federal mitigation grants. NRPC is currently working with Brookline, Pelham, and Mason to update their Plans. Please contact Jill Longval, jilll@nashuarpc.org for questions related to the Hazard Mitigation program.

Land Use & Environmental Ongoing & Upcoming Activities

- New NRPC Economic Development Services Programming
- Litchfield Capital Improvements Program
- Nashua Assessment of Fair Housing
- Brookline, Pelham, & Mason Hazard Mitigation Plans
- Climate Health Action Plan
- Nashua Farmers Market Feasibility Studies
- Parks & Playgrounds Planning Guidebook
- Mason, Wilton & Litchfield Planning Board Services
- Regional Competitive Electricity Purchase Aggregation

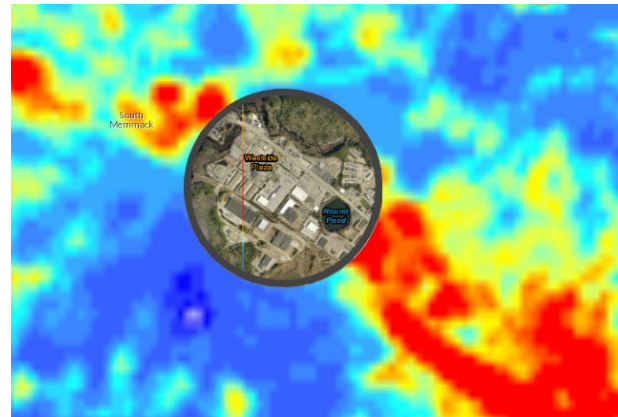


Project Update: Trail Mapping for Merrimack Conservation Commission

NRPC continues to make steady progress on four brochure-style trail maps for the Merrimack Conservation Commission. To the right is the new map for Horse Hill Nature Preserve, which was also displayed at the Town of Merrimack's Winter Carnival. In the spring, similar maps will be published for Wildcat Falls Conservation Area, Grater Woods, and Wasserman Conservation Area.

What's Behind the Urban Heat Island Effect?

A Story Map by NRPC Due to human activities and land cover change urban areas can be significantly warmer than their surrounding rural areas. This remote sensing map shows land surface temperature as detected by the LandSat8 OLI_TIRS sensor on August 30, 2016 at approximately 10:30 am. Users can move the spyglass around the map to reveal land cover types that contribute to the urban heat island. Check it out at: <http://arcg.is/2eFGq7m>



NRPC Welcomes Andrew Smeltz to the GIS Group

Andrew Smeltz has joined NRPC in the position of GIS Specialist. Andrew is a UNH grad and recently completed his graduate studies in Conservation Biology with a Certificate in Applied Spatial Analysis at Antioch University. His previous experience includes a year-long graduate teaching assistantship at Antioch and a GIS internship at the NH Division of Forestry and Lands.

High-Resolution LiDAR Elevation Data

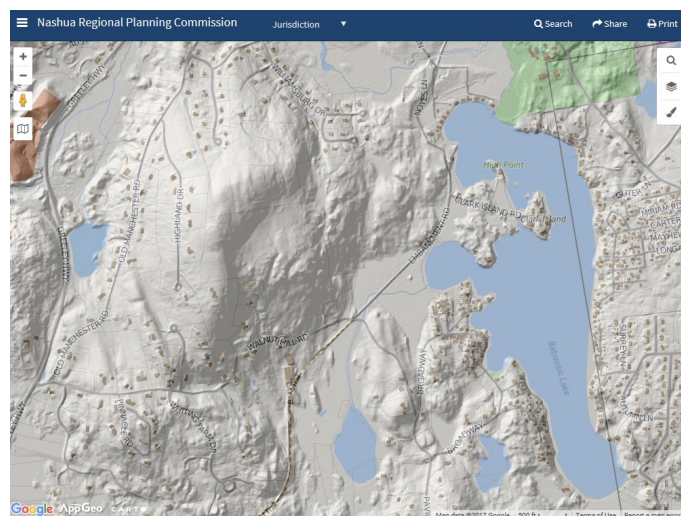
Very detailed hillshaded terrain from NH Granit is now available in [MapGeo](#), NRPC's Live Maps app. NRPC also has access to raw point cloud and Digital Elevation Models (DEMs) for advanced elevation mapping and analysis.

Upcoming and Ongoing

- Recreational opportunities mapping
- Modernization of NRPC's GIS Transportation Data Viewer
- Litchfield and Amherst Tax Map Updates
- Critical Infrastructure Mapping

GIS Services Activities:

- Regional GIS Data Development
- GIS Brownbag Series
- Interactive & Custom Online Mapping
- Travel Demand Modelling
- Downloadable Data and Maps



FTA Funding Applications



NRPC recently completed the application process for Federal Transit Administration (FTA) 5310 Formula Funds (FF) and FTA 5310 Purchase of Service (POS) funds that will be used to support the ongoing work of the Souhegan Valley Transportation Collaborative (SVTC). SVTC is a cooperative effort between the participating communities of Amherst, Brookline, Hollis, Milford, Mont Vernon and Wilton to provide affordable, handicapped accessible transportation to area residents in the western part of the region.



Identified as a primary goal in The Nashua Transit System (NTS) Comprehensive Plan 2016-2025 to expand transit service, NRPC also completed an application process for FTA 5305(e) Statewide Planning and Research (SPR) funds that can be used for planning and technical studies of public transportation systems. If awarded, the SPR funds will be used to support a regional transit system service expansion study.



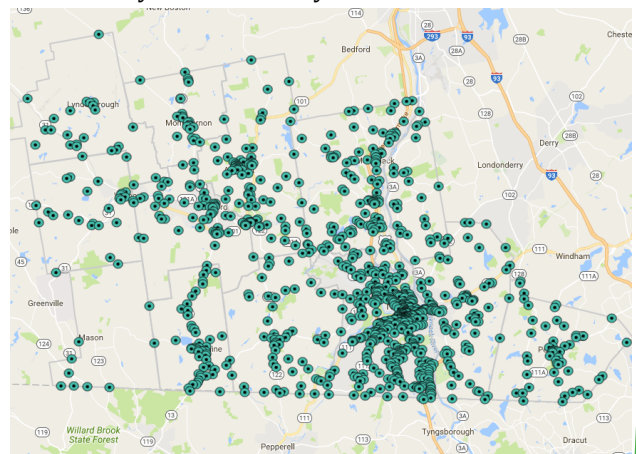
The Nashua Urbanized Area (UZA) / Transportation Management Area (TMA) is the largest Urbanized Area in New Hampshire and the only one not served by a regional transit system. To address this deficiency, this project will examine transit service beyond the Nashua City limits and consider possible routes along several major regional corridors.

Traffic Counting Program

NRPC staff is preparing for the 2017 traffic counting season. Three main types of data will be collected: motor vehicle traffic volumes on specific road segments, intersection turning movement counts, and pedestrian and bicycle volumes on trails and elsewhere.

Motor vehicle traffic volume counts are collected in cooperation with NH Department of Transportation (NHDOT) to support the Highway Performance Monitoring System (HPMS). The HPMS is a nationwide database detailing the condition and use of local, state, and federal roads.

Traffic count locations are determined by the NHDOT to fulfill reporting requirements under the HPMS. There are approximately 385 HPMS locations in the region, counted on a rotating basis. Staff will collect data at approximately 130 locations this season. NRPC collects additional local traffic data at the request of town officials. These local efforts support specific local municipal projects such as traffic circulation studies, intersection analyses, and signalization projects. In all, NRPC maintains a database of over 1,000 historical traffic counts. Traffic count data is available through the NRPC's online Transportation Data Viewer at <http://www.nashuarpc.org/transview/>. Contact Matt Waitkins at mattw@nashuarpc.org to request traffic counts for your community.



Transportation Upcoming and Ongoing Activities

- Ten Year Plan Process
- Transportation Workshop-Nashua
- Travel Demand Modeling
- Congestion Management

COMMISSIONERS

AMHERST: Martin Michaelis, Michael Dell Orfano, Susan Ruch | **BROOKLINE:** Jill Adams, Tom Rogers | **HOLLIS:** Robert Larmouth, Venu Rao | **HUDSON:** Ted Luszey, James Battis, George Hall | **LITCHFIELD:** Thomas Young, Kimberly Queenan | **LYNDEBOROUGH:** Bret Mader | **MASON:** Louise Lavoie | **MERRIMACK:** Karin Elmer (Treasurer), William W. Boyd III, Anant Panwalkar, Margaret Morris | **MONT VERNON:** Michael Fimbel (Vice Chair) | **MILFORD:** Janet Langdell, Chris Costantino, George Skuse | **NASHUA:** Daniel Moriarty (A), Dan Kelly, Roger Houston, Mary Ann Melizzi-Golja, Sarah Marchant, Mark Cookson, David Schoneman | **PELHAM:** David Hennessey (Chair), Hal Lynde | **WILTON:** Kermit Williams, Jim Kofalt |

Nashua Regional Planning Commission, 9 Executive Park Drive, Suite 201, Merrimack, NH 03054
PH: 603-424-2240 ~ FAX: 603-424-2230 ~ www.nashuarpc.org