



Program Highlights

In this Issue

- **Bicycle & Pedestrian Counting Equipment Installed on the Nashua River Rail Trail**
- **New Grants!**
- **TMA Certification Review Process**
- **Road Surface Management Moves to the Cloud**
- **GIS Poster Promotes Pedestrian Connections**
- **Land Use Mapping for Wilton**
- **Household Hazardous Waste (HHW) Program**
- **Competitive Electricity Supply**
- **Wilton Conservation Plan Update**

Letter from the Executive Director

As we approach the end of 2015 it seems appropriate to look back at and highlight the major events of the calendar year. For the NRPC region the proposed Tennessee Gas/Northeast Energy Direct (NED) pipeline dominated the narrative of 2015. This proposed project, though controversial, demonstrates the importance of regional planning and cooperation. It also highlights the value of NRPC as a resource to its members. I'm proud of the work the NRPC Staff and Energy Facility Advisory Committee (EFAC) members completed. The data and information gathered over the course of the last 10 months has proved to be of great use to our member communities.

The proposed NED pipeline also prompted an important conversation about planning for our energy future and NRPC's role in that conversation. As we look ahead to calendar 2016 NRPC will continue to explore initiatives to help plan our regional energy future. We will partner with our neighboring planning Commissions and agencies to ensure a robust inter-regional conversation. NRPC will continue to support our member communities in their efforts to address the potential impacts of the proposed pipeline. The NRPC Energy Facilities Advisory Committee (EFAC) will continue to work to ensure the latest information on the NED proposal is available to the NRPC communities.

In addition NRPC will work to advance pipeline safety and education initiatives through the U.S. Department of Transportation's Pipeline and Hazardous Materials Safety Administration (PHMSA) Technical Assistance Grant (TAG) program. NRPC will work to advance existing best-practice guidance for land-use planning around existing and planned pipeline as well as general Dig-Safe awareness. NRPC will also establish an Open Data portal where stakeholders can access curated, authoritative, and up-to-date GIS data and mapping information related to pipeline planning and safety. Lastly, NRPC will also arrange a local incident training workshop for local fire and other first responders.

As we plan ahead for 2016, the Staff at NRPC would like to thank you for your time, dedication and support and wish you a happy holiday season.

Tim Roache, Executive Director

NRPC Staff

Tim Roache-ext. 28 Executive Director timr@nashuarpc.org	Jen Czysz-ext. 31 Assistant Director jenc@nashuarpc.org	Camille Pattison-ext. 14 Planning Manager camillep@nashuarpc.org	Sara Siskavich-ext. 21 GIS Manager saras@nashuarpc.org
Karen Baker-ext. 11 Program Assistant karenb@nashuarpc.org	Jill Longval-ext. 27 Senior Environmental Planner jilll@nashuarpc.org	Ryan Friedman-ext. 20 Senior GIS Planner ryanf@nashuarpc.org	Kristina Sargent-ext. 23 GIS Specialist Kristinas@nashuarpc.org
Tanya Reinert-ext. 10 Finance/HR Administrator tanyar@nashuarpc.org	Mark Connors-ext. 17 Regional Planner markc@nashuarpc.org	Matt Waitkins-ext. 18 Field Data/Transportation Planner mattw@nashuarpc.org	Joe Taranto-ext. 26 GIS Technician joet@nashuarpc.org
			Julie Chizmas, ext. 19 Senior Transportation Planner juliec@nashuarpc.org

TMA Certification Review Process

Every 4 years FTA and FHWA jointly review the metropolitan transportation planning process for those areas over 200,000 persons (TMAs). As part of this review NRPC hosted input opportunities at the October Executive Committee meeting and November TTAC meeting. Additionally, FTA and FHWA held a full day review meeting on November 4th. A nearly six week public comment window was open through December 4th. FHWA and FTA will summarize all comments in a report that also includes their desk review findings. The ultimate goal is to assess the region's transportation planning process and may include commendations, recommendations and/or corrective actions. Each of the federal agencies are looking to ascertain whether NRPC promotes a multimodal transportation process that is continuing, cooperative, comprehensive and includes public input. The transportation planning products required under the federal transportation programming includes our UPWP, Metropolitan Transportation Plan, Congestion Management Process, Transportation Improvement Program and Public Participation Plan. Stay tuned for the report to be issued in early 2016.

Bicycle and Pedestrian Counting Equipment Installed on the Nashua River Rail Trail



NRPC recently completed the installation of equipment that will automatically count bicycle and pedestrian traffic on the Nashua River Rail Trail. The equipment is the first of its kind in New Hampshire and is the result of an innovative public-private partnership between NRPC, the City of Nashua and Jamar Technologies, Inc.

The equipment will operate around-the-clock every day of the year and the data will be used to highlight the popularity of the City of Nashua trail system and to support future efforts to improve the trail system.

Feel free to contact Matt Waitkins at NRPC for additional information about this project and other bicycle and pedestrian related efforts in the region.

New Grants!

NRPC was awarded two new grants this fall. Under the USDA's Farmers Market Promotion Program NRPC will partner with Nashua's Great American Downtown, operator of the Nashua Farmers Market, who will work to increase the capacity and sustainability of the Market through marketing, vendor recruitment and institution of a SNAP/EBT system.

NRPC will conduct market demand and feasibility analyses for potential



opportunities to expand the market and establish preliminary plans for a winter farmers' market and mobile market to operate in the Nashua area.

The recently awarded HNH *foundation* grant will support the development GIS data and analysis of comparative recreation opportunities for all 13 communities in the region. The final work products will include a series of recreation overview maps that will also be adapted into a portable format to support mobile users, and a report-out of the municipal and regional existing conditions recreation opportunities analysis. The second component of the initiative will be a guidebook designed to enable municipalities to proactively plan for parks and playgrounds. All too often outdoor play space is an afterthought in the traditional development process or communities are not prepared to take advantage of opportunities to create new or enhance existing facilities when they arise.

NRPC Upcoming Transportation Activities:

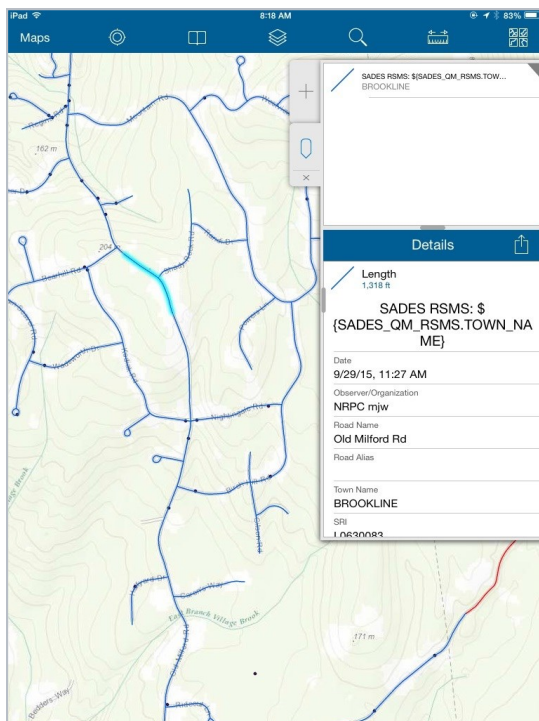
- North Bridge Summit—Northern Crossing of the Merrimack River
- MTP Updates

NRPC Ongoing Transportation Activities:

- Travel Demand Modeling
- Congestion Management
- RSMS SADES Pilot Program

Road Surface Management Moves to the Cloud

In support of our obligations under our USDOT Unified Work Program, NRPC is conducting a road surface management project for the town of Brookline, NH. This project is a pilot of the Statewide Asset Data Exchange System (SADES), which establishes a primary transportation asset inventory and condition assessment process for many state and local agencies. The system leverages ESRI (a geographic information system company) software, ArcDesktop and ArcOnline, and allows anyone with a smart phone or tablet to have access to the asset management database.



Data gathered on iPads in the field is uploaded to the cloud for review and will be compiled into a comprehensive statewide map. Finalized data will be available through a web application, a web mapping service and a direct download portal.

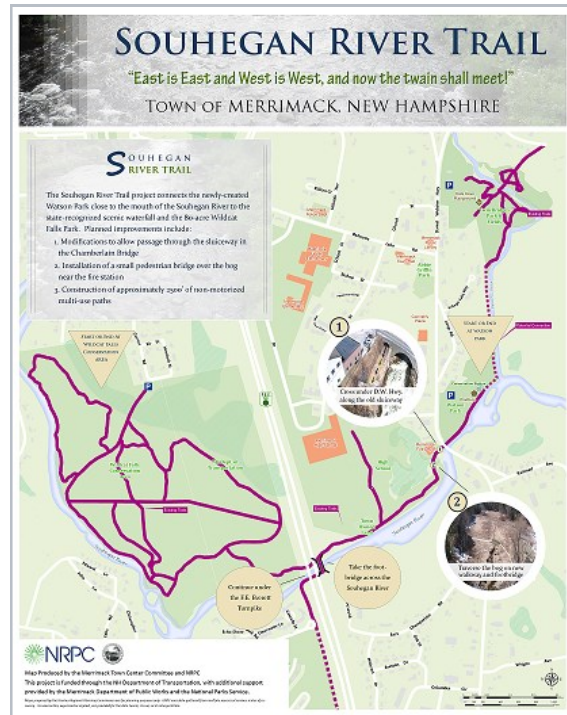
NRPC Upcoming GIS Activities:

- Recreational opportunities mapping including GIS trails
- MapGeo Update
- GIS Open Data Portal
- Support for Transportation and Land Use Programs
- Robust Metadata Development

NRPC Ongoing GIS Services:

- Regional GIS Data Development
- GIS Brownbag Series
- Interactive Online Mapping
- Travel Demand Modelling
- Downloadable Maps
- Custom Mapping

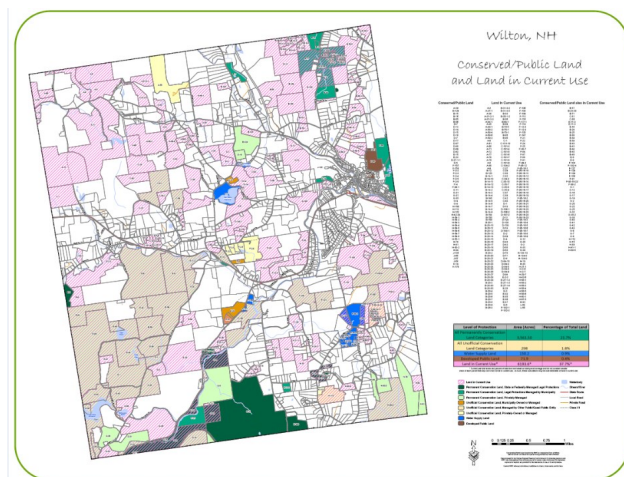
GIS Poster Promotes Pedestrian Connections



NRPC recently worked with the Town of Merrimack's Town Center Committee to complete this map and informational graphic for the Souhegan River Trail. The project, funded through DOT dollars and with support from the Town of Merrimack DPW and the National Parks service, will link several parks and destinations along the Souhegan River.

Land Use Mapping for Wilton, NH

As part of a comprehensive update to the Town's Conservation Plan, NRPC completed an overview poster displaying all known conserved/public lands that were symbolized by primary protection level and protecting agency, as well as all lands in current use.



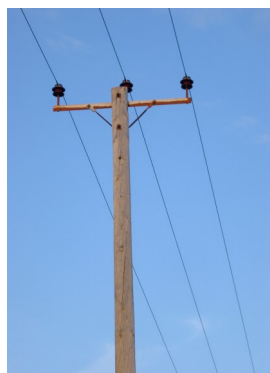
Household Hazardous Waste (HHW) Program - NRPC conducts six HHW collections each year on behalf of the Nashua Region Solid Waste Management District to allow residents to properly dispose of hazardous products. Five of the events are located in Nashua and one is held in Milford. In 2015, a total of 1,696 households participated in the HHW collections District-wide. This was an increase from the 2014 total of 1,623 households. District-wide, participation rates in 2015 were the highest they have been since 2006. 34% of District-wide participants were first time attendees. The Solid Waste District manifested a total of 85,154 pounds of waste during the 2015 collection season. Non-latex paint continued to be the most common item received (51.4%), solvents and thinners were second (40.1%), and lawn and garden products were the third most common item (29.5%).



Wilton Conservation Plan Update

NRPC staff has been assisting the Town of Wilton in updating their Conservation Plan, which was originally developed in 1988. One of the key goals of the update was to classify and calculate the total acres of conservation lands as well as lands in current use. A number of additional maps were updated and added including scenic vistas and views, water resources and wildlife habitat. Elements of the 2009 Natural Resources Inventory were also incorporated into the draft plan. Staff is currently coordinating with the Conservation Commission to make final edits to the plan and create an eye-catching stand along executive summary document.

Competitive Electricity Supply



The goal of the Nashua Region Electricity Supply Aggregation is to purchase electricity as a group from a competitive supplier at a lower rate than each member could receive on its own. By purchasing as an aggregation, municipalities and school districts can offer electricity suppliers a larger demand than if they each tried to purchase electricity individually. The larger demand, in turn, allows suppliers to offer a better rate to the aggregation than it could to individual members. In November, aggregation members concluded an 8-month contract with a competitive supplier. Savings among aggregation members varied based on usage. Individual 8-month savings resulting from the 2015 contract ranged from \$1,651 to \$61,151 compared to the default utility rate. Total 8-month savings for the group was \$280,772 or 35.5%. This fall aggregation members signed new 12-month contracts for competitive electricity supply through November 2016.

COMMISSIONERS

AMHERST

Martin Michaelis
Michael Dell Orfano
Susan Ruch

BROOKLINE

Jill Adams

HOLLIS

Robert Larmouth
Venu Rao

HUDSON

Richard Maddox
James Battis
George Hall
Jeff Rider (alt)

LITCHFIELD

Thomas Young
Michael Croteau

LYNDEBOROUGH

Steve Brown
Bret Mader

MASON

Louise Lavoie

MERRIMACK

Karin Elmer (Treasurer)
Thomas Mahon
Anant Panwalkar
Margaret Morris

MONT VERNON

Michael Fimbel (Vice Chair)

MILFORD

Janet Langdell
Chris Costantino

NASHUA

Daniel Moriarty
Dan Kelly
Jim Donchess
Roger Houston (A)
Mary Ann Melizzi-Golja (A)
Sarah Marchant

PELHAM

David Hennessey (Chair)
Hal Lynde

WILTON

Kermit Williams

NRPC Upcoming Land Use & Environmental Activities:

- Nashua Farmers Market Feasibility Studies
- Parks & Playground Mapping Guidebook

NRPC Ongoing Land Use & Environmental Activities:

- Development Review & Planning Services to Mason, Wilton & Litchfield
- Master Plan Update Services
- Household Hazardous Waste Program
- Regional Competitive Electricity Purchase Aggregation
- Complete Streets Guide

Nashua Regional Planning Commission
9 Executive Park Drive, Suite 201
Merrimack, NH 03054
PH: 603-424-2240
FAX: 603-424-2230
www.nashuarpc.org