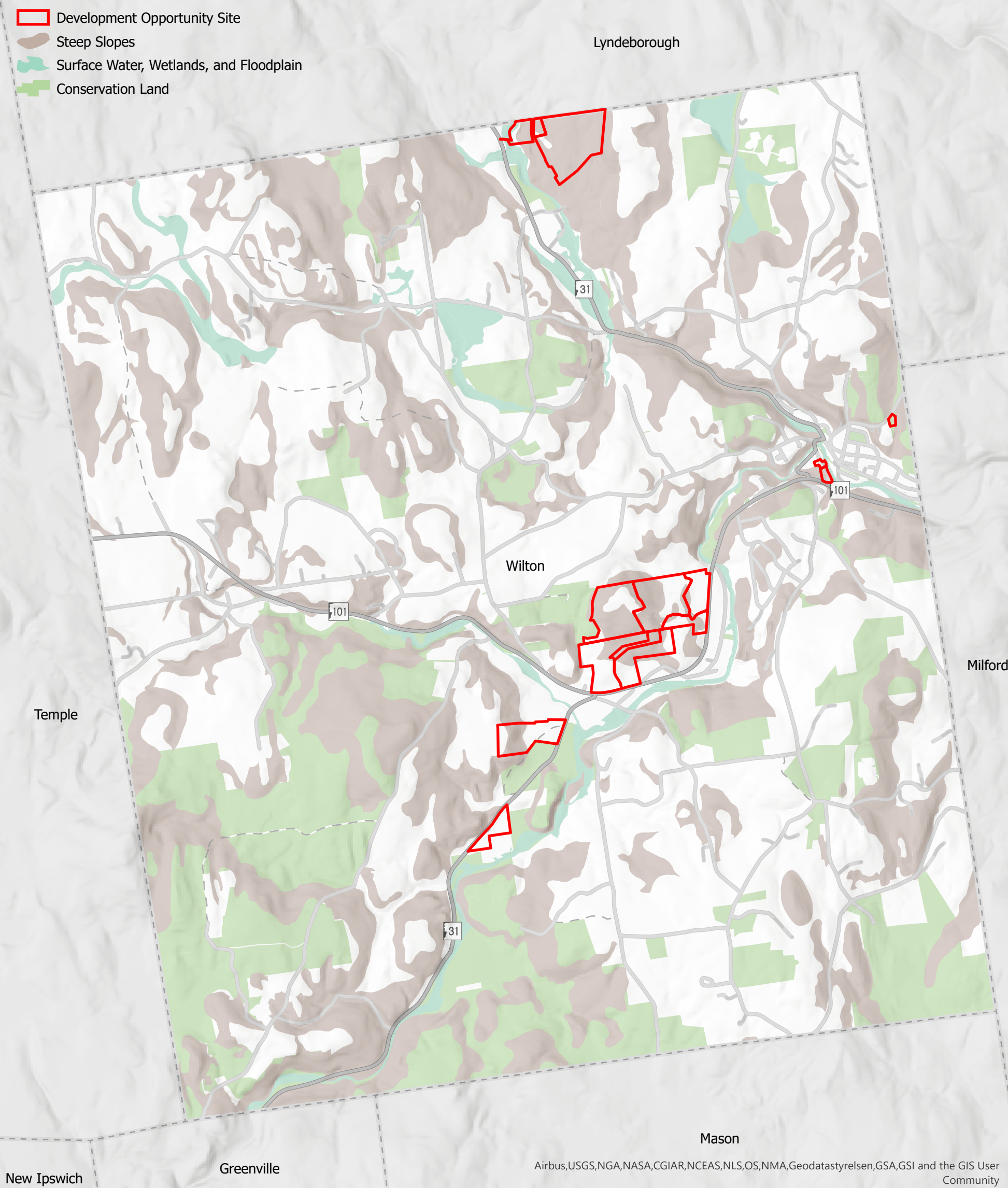


# OPPORTUNITY SITES WILTON



These sites were selected by community staff and steering committee members as those with the highest current potential for development, redevelopment, and reinvestment.



## Natural Constraints

Development Opportunity Site

Transportation Projects from current 10-year and long-range transportation plans

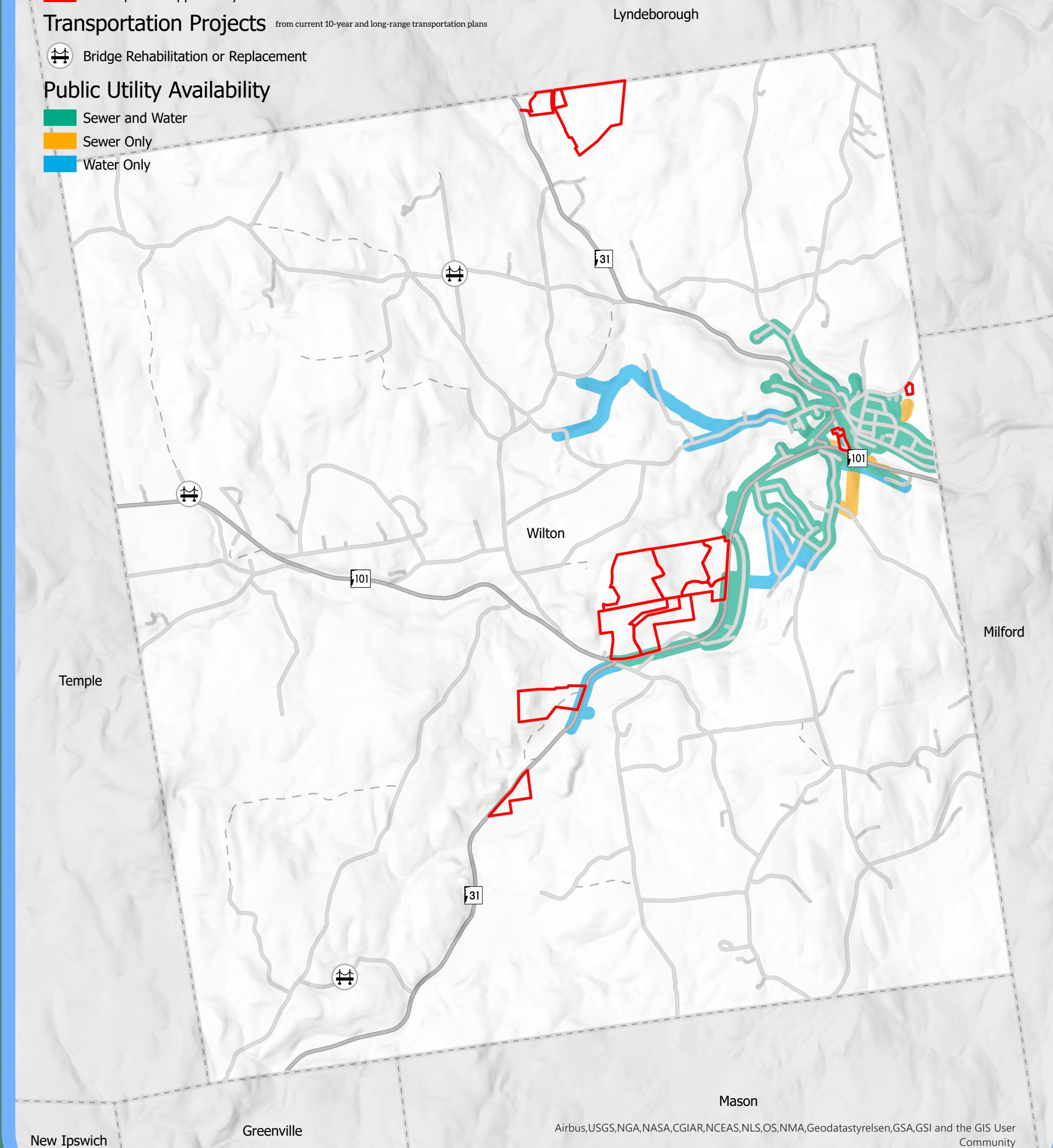
Bridge Rehabilitation or Replacement

Public Utility Availability

Sewer and Water

Sewer Only

Water Only



## Infrastructure

The former Colony Brothers' Mill (most recently owned by WS Packaging/Label Art) is a historic mill building adjacent to Downtown Wilton and is serviced by both town water and sewer. There are several sizable parcels along Gibbons Highway (Route 101) that are industrial-zoned and largely undeveloped. And then there are parcels with ongoing or previous gravel extraction operations, one cluster in the north on Forest Road and another cluster in the south on Route 31. These parcels do not have town water or sewer and the hilly Wilton terrain will present a challenge.