

## Norwood Public Health Department Weekly COVID-19 Data Report November 27, 2020

Norwood data as reported by MA Department of Public Health:

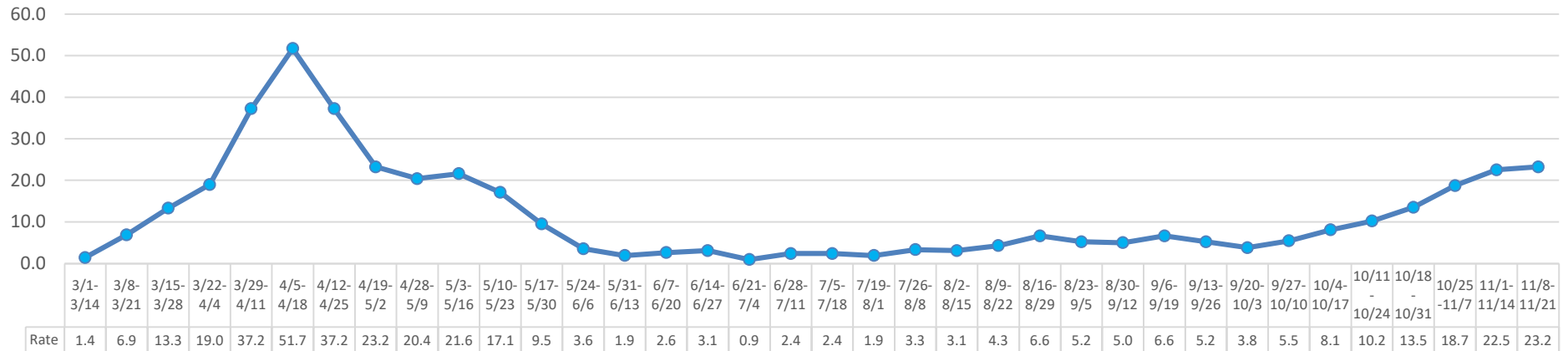
- Total Confirmed Case count: 938
- Case count in the last 14 days: 98
- Average Daily Incidence Rate per 100,000 (Last 14 days)^: 23.1
- Percent change over the last 14 days: Lower\*
- Total tests: 27,138
- Total tests last 14 days: 3,819
- Total positive tests performed last 14 days: 115
- Percent Positive last 14 days: 3.01%
- Change in Percent Positivity: Lower\*

^Current two-week period (11/8/2020-11/21/2020) as of 11/25/2020

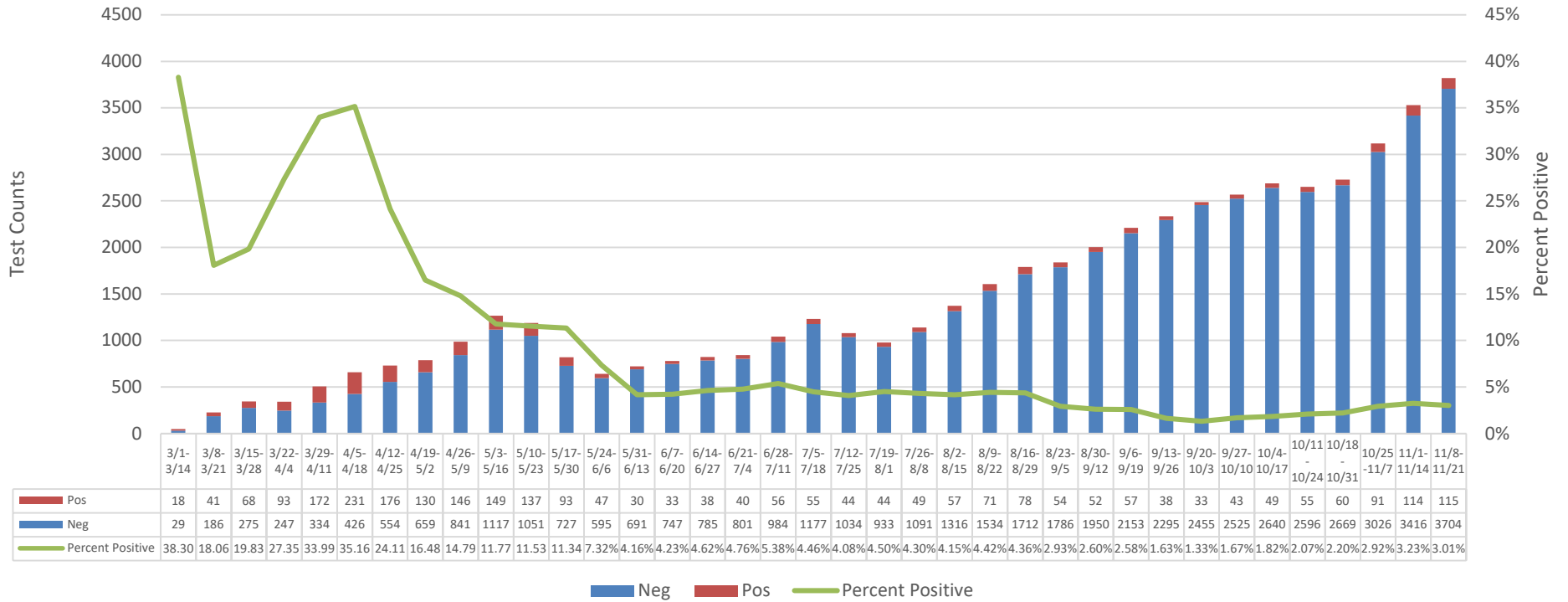
\*Number of new cases occurring over the current two-week period (11/8/2020-11/21/2020) compared to the previous two-week period (11/1/2020-11/14/2020)

Population			
Group	Under 10K	10K-50K	Over 50K
Grey	Less than or equal to 10 total cases	Less than or equal to 10 total cases	Less than or equal to 15 total cases
Green	Less than or equal to 15 total cases	<10 avg cases/100k AND >10 total cases	<10 avg cases/100k AND >15 total cases
Yellow	Less than or equal to 25 total cases	≥10 avg cases/100k OR ≥5% pos rate	≥10 avg cases/100k OR ≥ 4% pos rate
Red	More than 25 total cases	≥10 avg cases/100k AND ≥5% pos rate	≥10 avg cases/100k AND ≥4% pos rate

Average Daily Case Rate per 100,000



### PCR/Molecular Testing Data

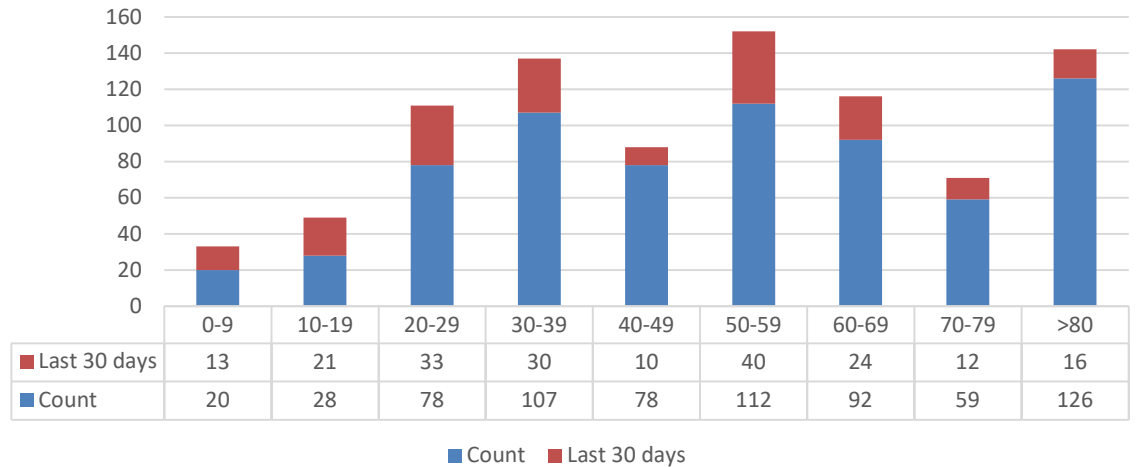


### Case Count by Age:

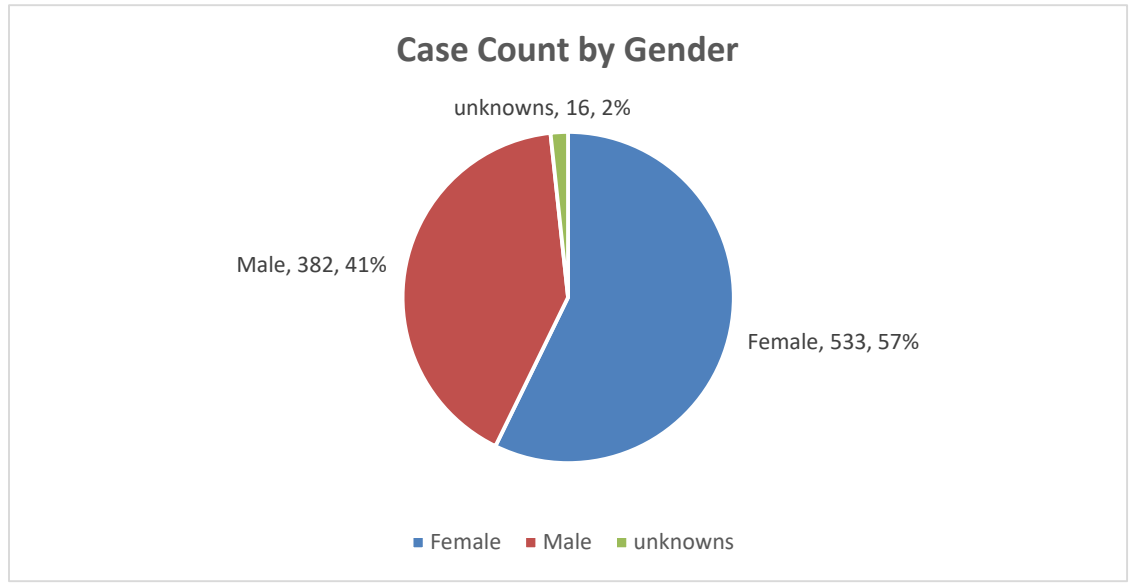
*Average Age since March: 51.4 years*

*Average Age in last 30 days: 44.1 years*

### Case Count by Age



**Case Count by Gender:**



**Case Count by Race:**

