



PARK CLASSIFICATION:

- 4.1-acre Neighborhood Park

OBSERVATIONS:

This new neighborhood park contains a large storm water detention pond with proposed trail improvements, playground areas, parking areas and an open picnic shelter. This park area requires additional grading, retaining walls and utility extensions to accommodate significant amount of park improvements currently proposed on the 2016 concept plan.

General Comments & Concerns:

- Parking areas could be reduced to allow for more open space.
- The amount of playground amenities proposed are more typical of a community park.
- Consider eliminating sidewalk along the north end of the pond to eliminate retaining wall costs.

EXISTING PARK AMENITIES:

Open Space Lawn

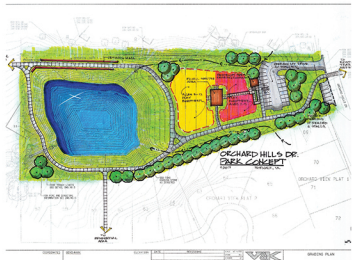
Stormwater Retention Pond

Future Proposed Features:

- Play Areas Ages 2-5 & 5-12
- Parking Areas
- Restroom Facility with Drinking Fountain
- Trail connection to school

RECOMMENDATIONS:

- Accessible circulation trail
- Seatwalls to accommodate grade changes
- Restroom building & parking
- Previously-selected Challenge course location
- Central open shelter
- Fishing dock & access
- Play areas suited to multiple age groups



ORCHARD HILLS PARK

Norwalk, Iowa