

Northwest Commission

Bus Stop Inventory, Assessment, and Recommendations



Michael Baker International

June 25, 2018

Northwest Commission

Contents

1.0 Introduction and Background	2
2.0 Bus Stop Inventory	2
3.0 Bus Stop Assessment and Improvement Recommendations	7
3.1 Curb Extension	7
3.2 Bus Stop Removal	8
3.3 Bus Stop Relocation	9
3.4 Landing Area	10
3.5 No Improvements	10
4.0 Shelter Installation and Bus Pull-off Locations	11
4.1 Crawford County	12
Holland Towers	12
Meadville Walmart	13
Park Ave and Steers St	14
Conneaut Lake Rd and Charles St	14
4.2 Venango County	15
UPMC Hospital	15
Main St and Erie St	15
4.3 Warren County	16
Warren General Hospital	16
5.0 Bus Stop Sign Content	17

1.0 Introduction and Background

In August 2017, the Northwest Pennsylvania Regional Planning and Development Commission (Northwest Commission) embarked on an initiative to accomplish three primary tasks:

- Complete a physical inventory of every fixed route bus stop in the region
- Develop regional bus stop standards and guidelines
- Compare the inventory to developed standard and guidelines

The Northwest Commission region has two transit agencies operating in Crawford, Venango, and Warren counties. Crawford Area Transportation Authority and Venango County Transit (CATA), as well as Transit Authority of Warren County (TAWC) provide both fixed route and shared-ride demand response transportation to thousands of residents in the region. This is accomplished through 16 fixed routes service over 400 bus stops.

This document details the complete physical inventory and the results of comparing this inventory to the bus stop guidelines detailed in a companion document.

2.0 Bus Stop Inventory

In November 2017, a team of field surveyors completed a physical inventory of 413 bus stops in the Northwest Pennsylvania region. This inventory process included the following:

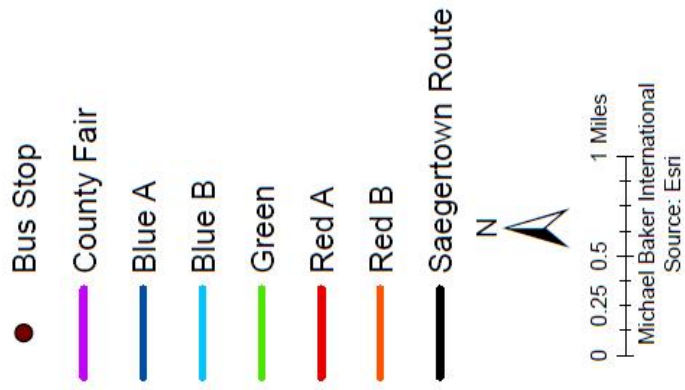
- GPS stop location
- Photo of condition and amenities at the time of inventory
- Record of present infrastructure and amenities
- Measurement of dimensions and cross-slope of paved pads and sidewalks, where present

The complete inventory is detailed in Appendix A of this report and as a companion excel file. The inventory includes the following fields:

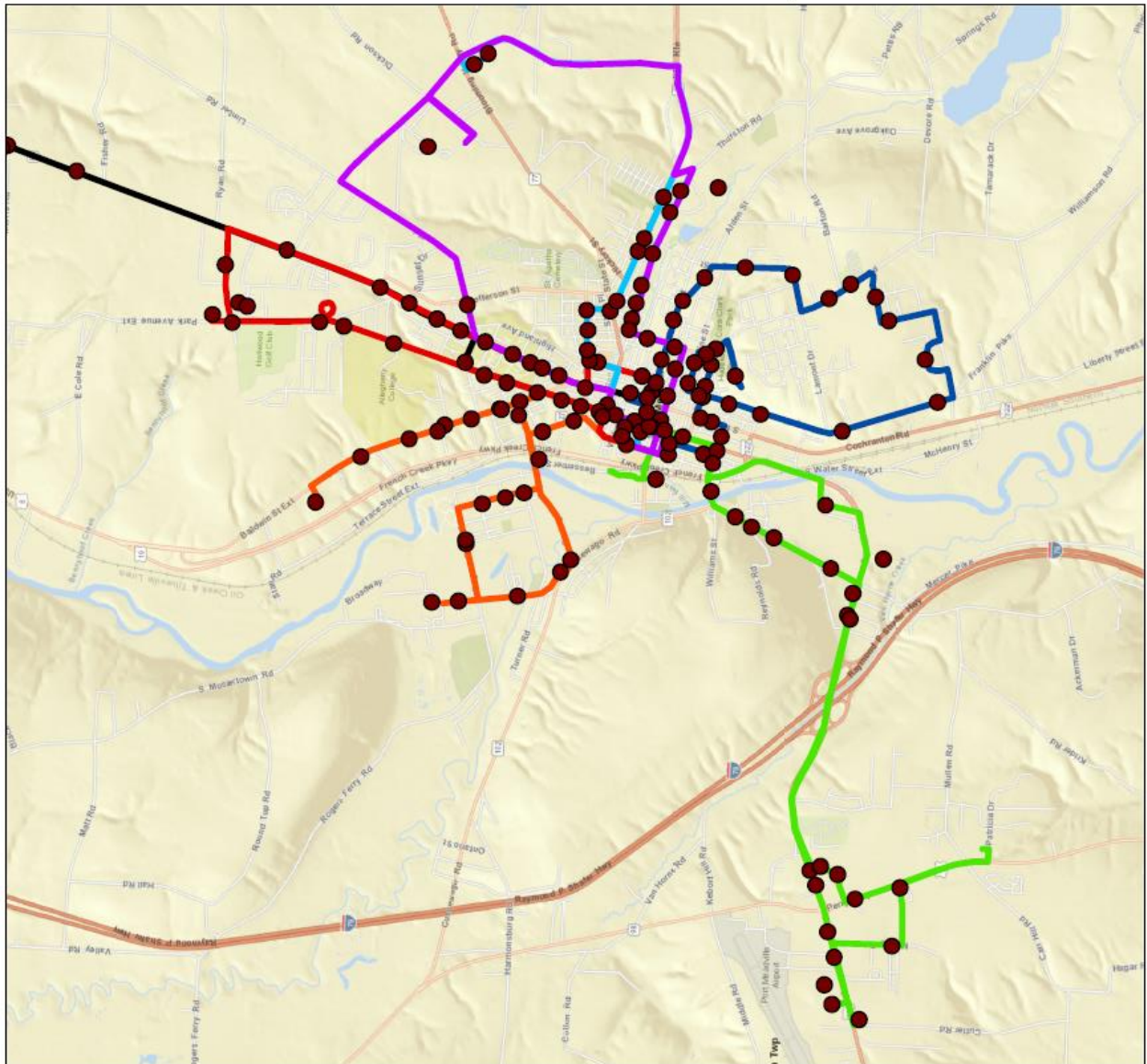
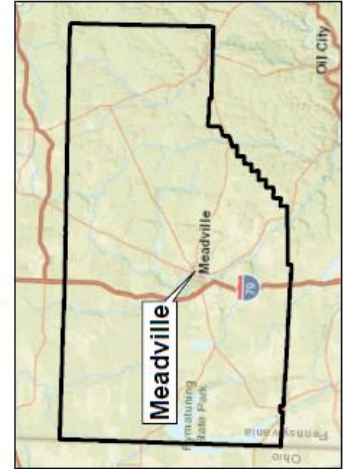
Field	Description
StopID	A unique identifier for each individual stop unrelated to internal agency records
StopName	Common name of stop used in agency schedules and other public materials
Routes	The current routes that serve the stop
Notes	Relevant notes from the field review
Agency	Agency the stop is served by
County	County the stop is located in
City	City, township, or borough the stop is located in
LAT	Latitude of stop based on GPS location
LON	Longitude of stop based on GPS location

Following the inventory, each stop was mapped and overlaid on corresponding routes. The maps are presented on the following pages and are made available to Northwest Commission partners in both ArcGIS format and Google Maps files.

Northwest PA Commission Bus Stop Inventory: Meadville



Crawford County Overview



BUS STOP INVENTORY, ASSESSMENT, AND RECOMMENDATION

Northwest PA Commission Bus Stop Inventory: Titusville

Legend

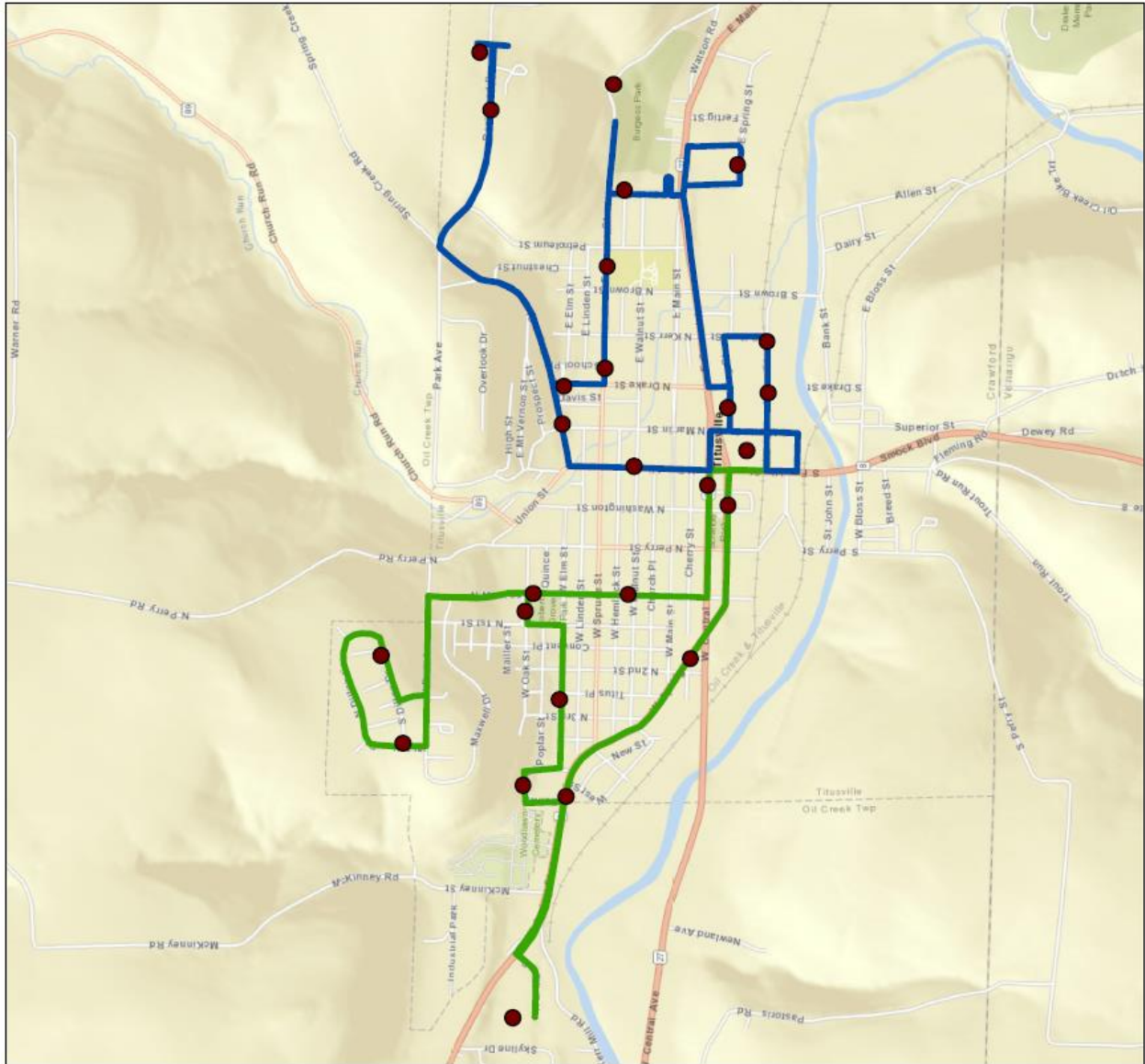
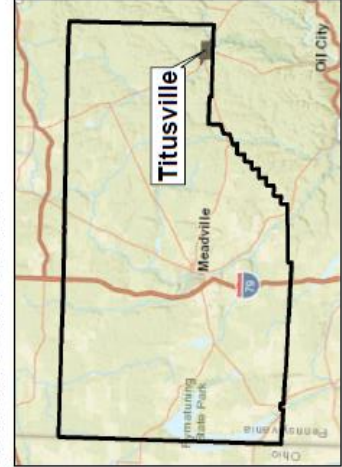
- Bus Stop
- Titusville Blue
- Titusville Green



0 0.125 0.25 0.5 Miles

Michael Baker International
Source: Esri

Crawford County Overview



**Northwest PA Commission
Bus Stop Inventory:
Oil City and Franklin**

Legend

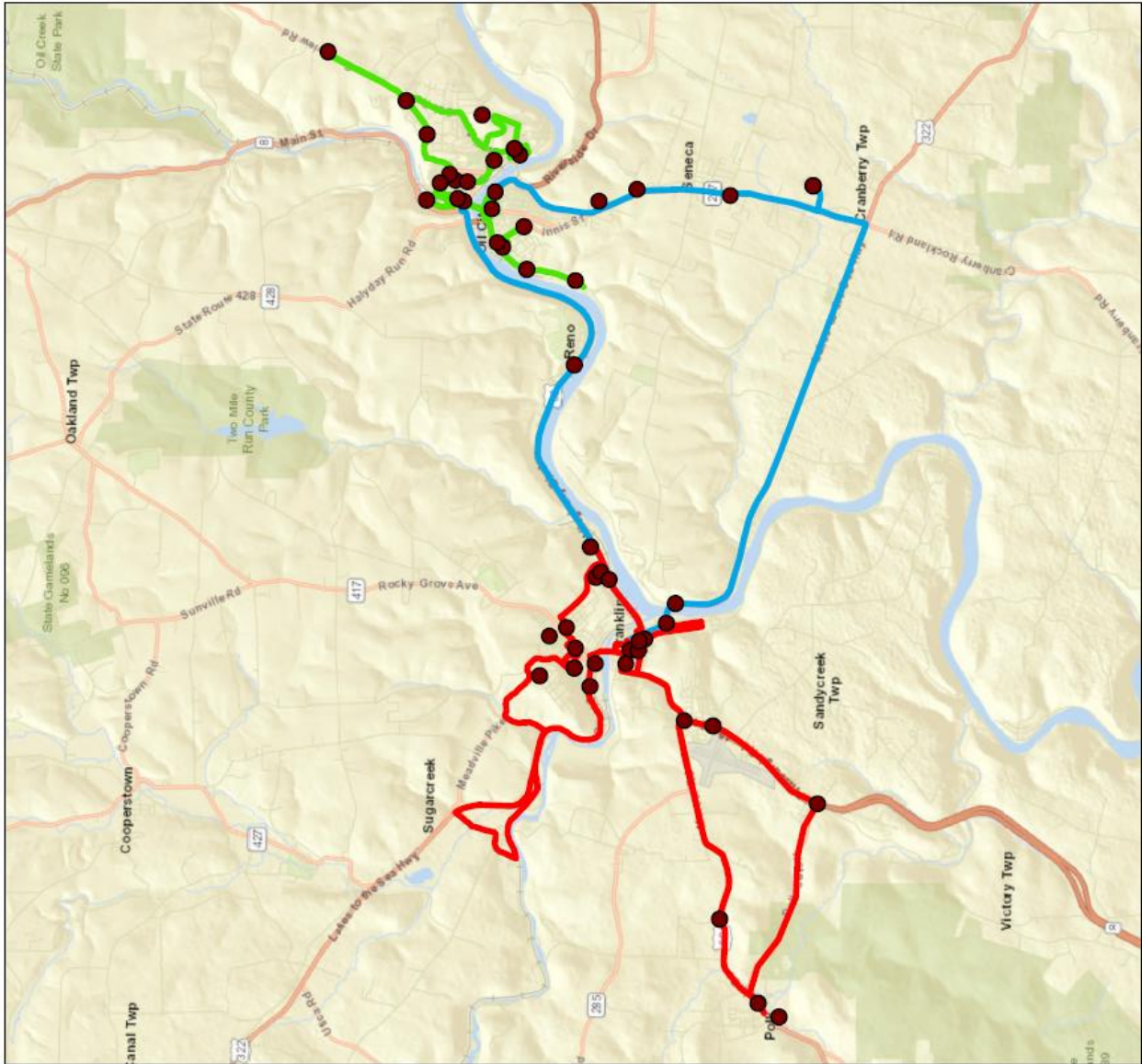
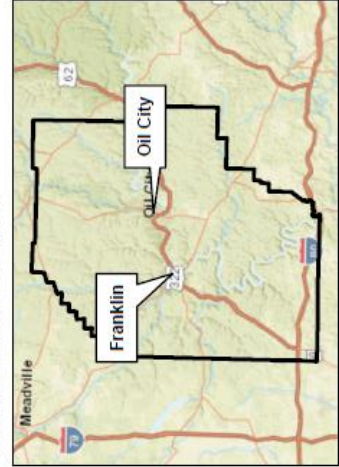
- Bus Stop
- Oil City Route
- Franklin Routes
- Intercity Route



0 0.75 1.5 3 Miles

Michael Baker International
Source: Esri

Venango County Overview



Northwest PA Commission Bus Stop Inventory: TAWC

Legend

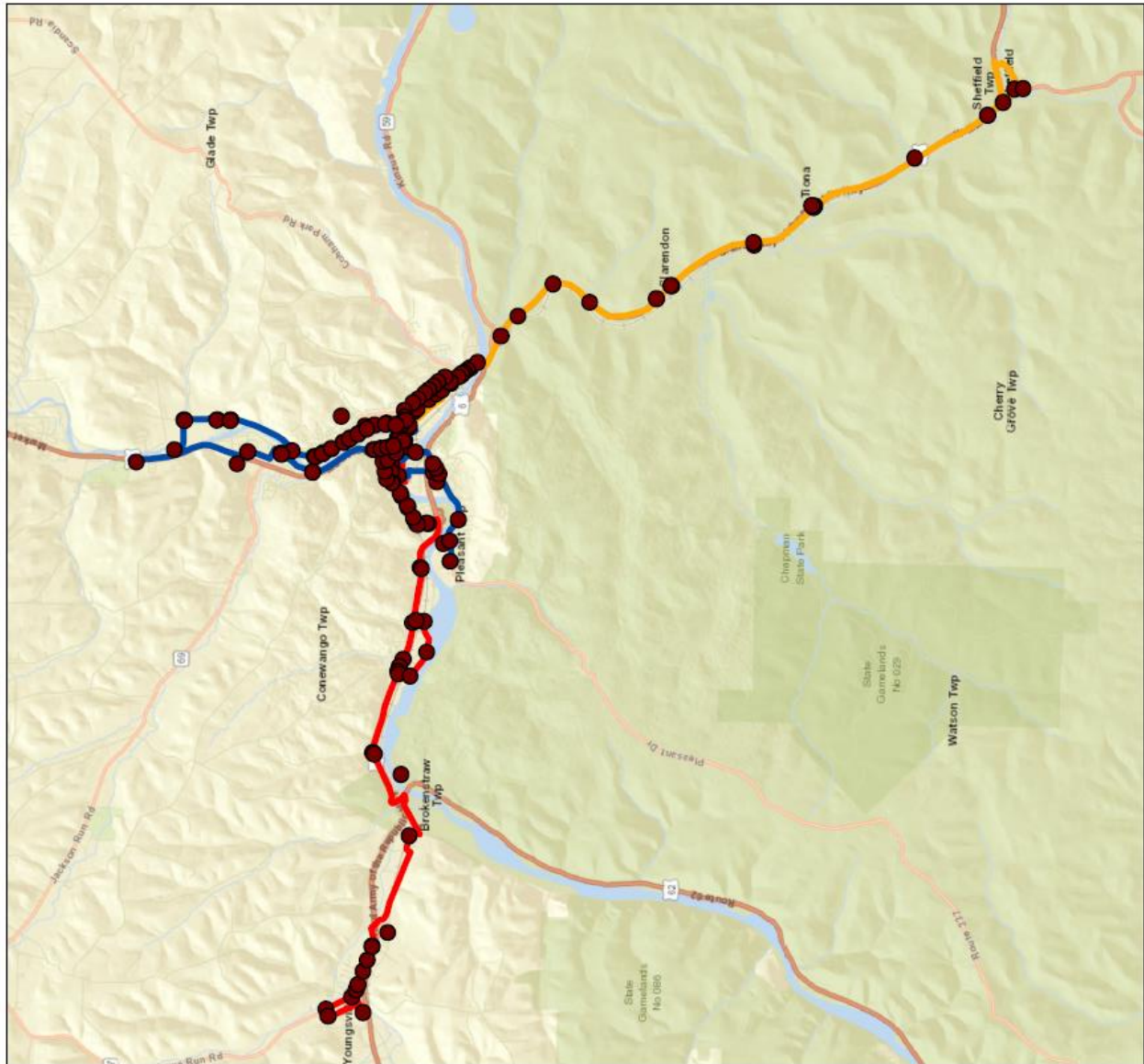
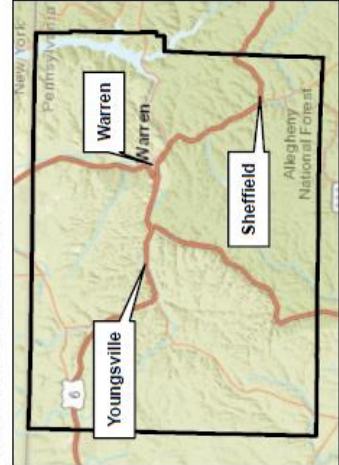
- Bus Stop
- North South Route
- Youngsville Route
- Sheffield Route



0 1.25 2.5 5 Miles

Michael Baker International
Source: Esri

Warren County Overview



3.0 Bus Stop Assessment and Improvement Recommendations

The *Bus Stop Guidelines: Design and Amenity Standards* document identified standards and specifications for common public transportation infrastructure and amenities. The *Bus Stop Guidelines* highlighted elements required for compliance with the Americans with Disabilities Act of 1990 (ADA) and those that encourage better pedestrian accessibility.

As part of the stop inventory process, surveyors took measurements and notes on existing stop landing area width/length, cross slope, sidewalk size, as well as other vital information needed to identify required improvements at stops. Once all these stops were recognized, surveyors studied stops individually to identify infrastructure elements missing and/or in need of improvement.

Through the analysis process, it was determined that some stops may need to be removed or not updated due to limited right of way, or if the requirement for installation of new sidewalks, pads, and/or other infrastructure would be too technically difficult or cost prohibitive. The subsections below detail bus stop enhancement recommendation categories as well as how improvement strategies can be accomplished. Attached as Appendix B to this document is a list of stop IDs for each category. Take note that list is not mutually exclusive, and stops can be assigned to more than one category.

3.1 Curb Extension

Identified in the *Bus Stop Guidelines: Design and Amenity Standards*, a landing area is a solid area attached to the curb that is at least 5 feet parallel to the street and 8 feet perpendicular to the street. Additionally, a landing area is required to be integrated into the nearest public right-of-way (sidewalk, multiuse path, etc.) and have a cross slope no greater than 2% to comply with ADA standards. According to the most recent ADA standards, all new or relocated bus stops must adhere to these policies.

A frequent occurrence throughout the region is the sidewalk or landing area not being connected to the roadway or curb. Over half of the stops recommended for immediate improvement are assigned to this category.

In many cases there is a patch of grass or some other buffer between the sidewalk/landing area and the roadway. See example 1 on the following page. From a pedestrian's standpoint, this is a good design because you need reasonable space to separate pedestrians from traffic. However, a disabled person needs an accessible pathway to the road to board and alight a bus. Additionally, a wheelchair ramp requires a hard level surface in order to be deployed effectively and used safely.

Once the landing area is identified, mark off a 5-foot section parallel to the roadway. Remove the grass, soil, or other blocking material between the landing area and curb. The next step requires an installer to dig deep enough to pour additional concrete at a depth of 4 inches. When connecting the sidewalk or pedestrian access route, it is important to use the same original material. Additionally, other ADA standards such as the 2% cross slope are still required.



Example 1: Stop ID 23

3.2 Bus Stop Removal

The *Bus Stop Guidelines* includes recommendations on interstop distance policies. Though each stop must be treated on an individual basis, for high to moderately densely populated areas it is recommended there be a stop no more than every one-quarter mile. If two stops are located within one-quarter mile of each other, it is not recommended that both stops be improved, but rather than one be removed to comply with established guidelines.

Based on factors like position, current and potential ridership, pedestrian access, or existing amenities, a recommendation was made as to which stop should be removed.

3.3 Bus Stop Relocation

Bus stops are commonly positioned in three locations relative to an intersection or roadway: far-side, near-side, and mid-block. The cost and benefits of these position types are discussed at length in section 1.1 of the *Bus Stop Guidelines*. The goal of proper stop placement is to allow operators to safely serve the stop while ensuring passengers can safely access the stop. To do this effectively, each design standard in the *Bus Stop Guidelines* identifies the space required to successfully accommodate a stop in a typical environment in Northwest Pennsylvania.

During the field inventory, it was noted that some stops were adjacent to driveways and intersections (far-side). Without enough distance between these features a bus can block access creating traffic issues and unsafe conditions. Example 2 illustrates such an instance. When the bus stops to load or unload passengers, it will block the roadway. In this case if the bus stop were to be moved 50 feet further down the street, it would alleviate blocking issues and remain compliant.



Example 2: Stop ID 45

3.4 Landing Area

This category identifies existing stops that are connected to the roadway and service an adjacent pedestrian network. While some stops in this category would benefit from additional amenity improvements, they are located in appropriate positions and have enough characteristics to be served safely and effectively. For this purpose, stops assigned to this group should be improved after stops in the former categories have been worked on.

3.5 No Improvements

In some cases, it would not be cost effective to improve existing stops in the near future due to the following circumstances:

- Lack of pedestrian connectivity.
- Limited right of way.
- Physical barriers such as a ditch, berm, landscaping utilities, etc.
- Located on steep incline/decline.
- Capital costs involved are too significant to justify investment.

4.0 Shelter Installation and Bus Pull-off Locations

As part of the stop assessment process, a review was completed to identify, prioritize, and highlight stop locations appropriate for bus shelter and bus pull-off amenities as described in the *Bus Stop Guidelines*. Both of these features add a level of comfort and safety for the passenger and operator alike that can better the experience of a transit system.

Bus stop shelters are designated, enclosed or semi-enclosed areas for stops that provide passengers protection from weather elements and other hazards that may be encountered while waiting for a bus to arrive. Looking beyond the priorities for a shelter mentioned in the *Bus Stop Guidelines* (right-of-way, pedestrian connectivity, ADA, landing area size, etc.), other important characteristics for shelter placement include:

- Number of daily boardings
- Number of routes served by stop
- Number of transfers
- Headways or distances between trips
- Employment/recreational destinations

Like shelters, the bus pull-off prioritization process takes other factors into consideration outside of *Bus Stop Guidelines*. An added buffer for an operator to stop outside of the travel lane greatly increases overall safety. Also, having an extended additional lane to help accelerate and reenter traffic saves time and decreases the probability of an accident. Other characteristics considered include:

- Average road speed
- Auto accidents in the area
- Shoulder width
- Number of trips a day
- Ridership

The following section highlights ideal locations for shelters and pull-offs in the region based on the *Bus Stop Guidelines* vital characteristics including: existing conditions, demand, property availability, cost, and safety. It is worth noting that there are other locations that are appropriate for these improvements outside of the examples explained below.

Based on these characteristics, the following locations have been identified as the most feasible and logical for the installation of bus stop shelters and/or pull-offs:

- Holland Towers, Crawford County
- Meadville Walmart, Crawford County
- Park Ave and Steers St, Crawford County
- Conneaut Lake Rd and Charles St, Crawford County
- UPMC Hospital (Cranberry Township), Venango County
- Main St and Erie St, Venango County
- Warren General Hospital, Warren County

4.1 Crawford County

The following details the recommendations locations for bus stop pull-off and/or shelters in Crawford County.

Holland Towers

This stop is adjacent to a large apartment building and is served by two routes. It currently has wide sidewalks, and enough space to install a shelter.



Example 3: Stop ID 12

Meadville Walmart

The second recommended shelter location is the Meadville Walmart (Stop ID 87). The location is a high demand transit destination and also has existing infrastructure to support a shelter. In both cases, CATA may need to come to an agreement with the property owners before shelters can be purchased and installed.



Example 4: Stop ID 87

Park Ave and Steers St

The stop at Park Avenue and Steers Street in Meadville services the Blue B and Red B Routes. Currently there is a large buffer a grass between the sidewalk and roadway (approximately 10 feet). This location is a good candidate for a pull-off due to the fact that this is a well-traveled street, served by many trips a day, and has enough space to be installed. Additionally, the length of the block meets the *Bus Stop Guidelines* recommended specifications for a bus to accelerate back into the travel lane after stopping.



Example 5: Stop ID 49

Conneaut Lake Rd and Charles St

Another recommended spot for a pull off is Conneaut Lake Road at Charles Street. With vehicles traveling at high speeds on Conneaut Lake Road, it would be ideal to have a pull-off for safety purposes. Though there is a shoulder, it does not appear to be wide enough for a 30-foot bus. There is however additional space between the shoulder and parking lot.



Example 6: Stop ID 94

4.2 Venango County

The following details the recommendations locations for bus stop pull-off and/or shelters in Venango County.

UPMC Hospital

UPMC Hospital in Cranberry Township is a major destination for employment in the community. The current bus stop is ADA compliant and has enough room to install a shelter. Collectively considering these factors this location would be a perfect candidate for a shelter. Like the previous shelter examples for Crawford County, an agreement with the property owner may need to be worked out before installation.



Example 7: Stop ID 245

Main St and Erie St

Located next to a war memorial, park, and crosswalk, the stop on Main Street and Erie Street in Polk already has space designated for a pull-off. To be utilized properly, more length will need to be added to have enough room to accelerate and decelerate to/from the travel lane. The current amenities along with the limited work necessary to improve the existing facility makes this location the perfect place for an improved pull-off.



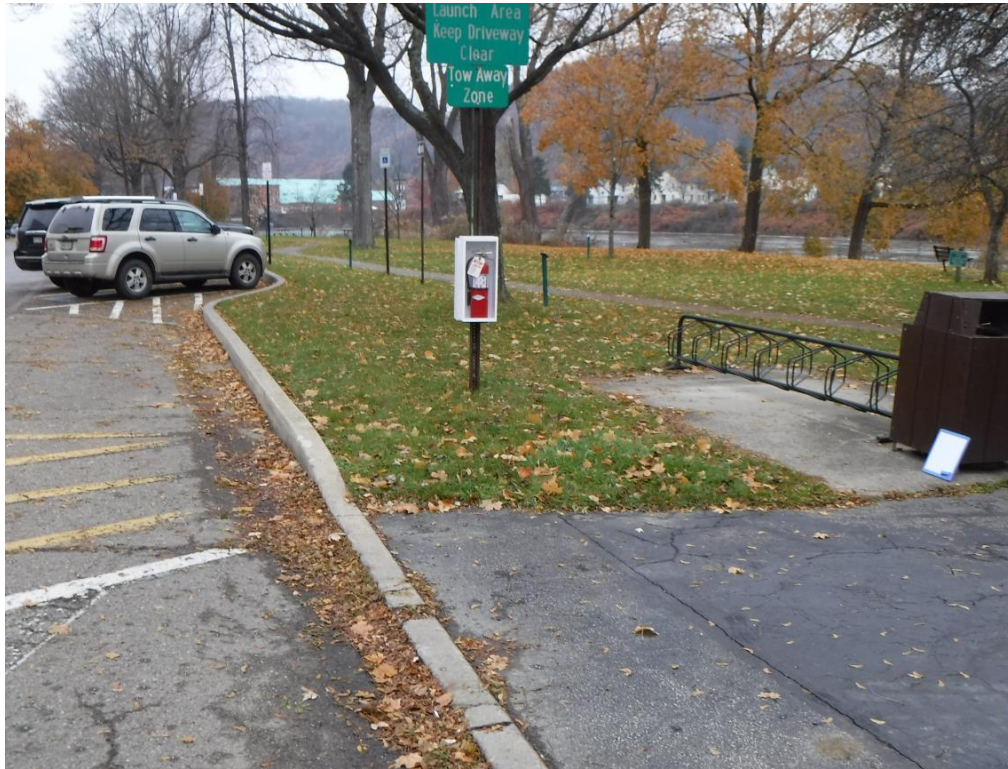
Example 8: Stop ID 214

4.3 Warren County

The following details the recommendations locations for bus stop pull-off and/or shelters in Warren County.

Warren General Hospital

Like previous last shelter example (UPMC), Warren General Hospital is a major employment destination. This circumstance combined with the fact that it is served by two routes with supplementary passenger amenities in place (bike rack, trash bin, lighting, and pedestrian access) makes this location a great opportunity for a shelter.



Example 9: Stop ID 260

5.0 Bus Stop Sign Content

Beyond the design standards discussed in the guidelines section, sign content is important from a customer service and marketing standpoint. Bus stop signs should clearly identify the location where passengers can utilize fixed route transit service. It is equally vital that the sign provides details of the routes served by the stop as well as customer service contact information. Other helpful details on a sign include the route's destination (if route name applies for inbound/outbound service), stop ID number, schedule information, detours and public notice for proposed service changes or agency meeting poster.

CATA does a good job providing significant information on their signs including routes served, contact number, and schedule times. While there is some room for improvement like including stop IDs and destination, existing signs effectively communicate to the riders.

TAWC could improve content and information printed on their signs. Currently, TAWC bus stop signs only include a logo. Additionally, many of the signs are old and worn making it difficult to identify it as a bus stop (see Example 3). Based on the lack of information and condition of the signs, the agency should consider designing and installing new bus stop signs that clearly delineate the elements identified above.



Example 10: Stop ID 278

Appendix A: Complete Stop Inventory

This page left intentionally black.

StopID	StopName	Routes	Notes	Agency	County	City	LAT	LON
1	DOWNTOWN MALL	Crawford County Fair, Blue A, Blue B, Green, Red A, Red B, Saegertown		CATA	Crawford	Meadville	41.639316	-80.15487
2	CATA OFFICE MEADVILLE	Crawford County Fair, Blue A, Green, Red B		CATA	Crawford	Meadville	41.635971	-80.155792
3	CHESTNUT ST AT PARK AVE	Crawford County Fair		CATA	Crawford	Meadville	41.637929	-80.152648
4	NORTH ST AT BURGER KING	Crawford County Fair, Blue B		CATA	Crawford	Meadville	41.640929	-80.150718
5	ALLEGHENY COLLEGE	Crawford County Fair, Red A, Saegertown		CATA	Crawford	Meadville	41.647156	-80.146471
6	LIMBER RD AT JEFFERSON	Crawford County Fair		CATA	Crawford	Meadville	41.652268	-80.140535
7	FAIRGROUNDS GATE 1	Crawford County Fair, Saegertown		CATA	Crawford	Meadville	41.65577	-80.123854
8	MEADVILLE HIGH SCHOOL	Crawford County Fair, Blue B		CATA	Crawford	Meadville	41.635565	-80.127779
11	ACTIVE AGING	Blue A		CATA	Crawford	Meadville	41.635933	-80.154628
12	HOLLAND TOWERS	Blue A, Green		CATA	Crawford	Meadville	41.633187	-80.155628
13	WILLOW ST AT PARK AVE	Blue A, Green		CATA	Crawford	Meadville	41.632107	-80.155236
14	WILLOW ST AT COTTAGE AVE	Blue A		CATA	Crawford	Meadville	41.63179	-80.153713
15	MAIN ST AT DAVIS ST	Blue A	No Parking Sign needed	CATA	Crawford	Meadville	41.6326	-80.152205
16	MAIN ST AT POPLAR ST	Blue A		CATA	Crawford	Meadville	41.633485	-80.151841
17	POPLAR ST AT LIBERTY ST	Blue A	Sign missing	CATA	Crawford	Meadville	41.633375	-80.149607
18	POPLAR ST AT EAST ST	Blue A		CATA	Crawford	Meadville	41.633197	-80.148446
19	POPLAR ST AT FAIRMONT AVE	Blue A		CATA	Crawford	Meadville	41.632767	-80.146175
20	FAIRVIEW/FAIRMONT APTS	Blue A		CATA	Crawford	Meadville	41.630818	-80.14728
21	MEADVILLE MEDICAL CENTER GROVE ST	Blue A		CATA	Crawford	Meadville	41.632441	-80.144486
22	GROVE ST AT PINE ST	Blue A		CATA	Crawford	Meadville	41.633195	-80.145071
23	PINE ST AT SPENCER ALLEY	Blue A		CATA	Crawford	Meadville	41.634089	-80.14602
24	PINE ST AT EAST ST	Blue A		CATA	Crawford	Meadville	41.634535	-80.148182
25	LIBERTY ST AT POPLAR ST	Blue A	Sign missing	CATA	Crawford	Meadville	41.633637	-80.149482
26	LIBERTY ST AT WILLOW ST	Blue A		CATA	Crawford	Meadville	41.631249	-80.150291
27	LIBERTY ST AT LINDEN ST	Blue A		CATA	Crawford	Meadville	41.628729	-80.151239
28	LIBERTY ST AT LAMONT DR	Blue A		CATA	Crawford	Meadville	41.62221	-80.152836
29	LIBERTY ST AT ARTHUR ST	Blue A		CATA	Crawford	Meadville	41.614676	-80.14949
30	FOREST GREEN APTS	Blue A		CATA	Crawford	Meadville	41.615762	-80.144968
31	GRAFF ST AT TALON ST	Blue A		CATA	Crawford	Meadville	41.618738	-80.140983
32	MEADOWLAND DR AT NEASON ST	Blue A		CATA	Crawford	Meadville	41.619845	-80.138536
33	WILLIAMSON RD AT ST. BRIGIDS CEMETERY	Blue A		CATA	Crawford	Meadville	41.621819	-80.137206
34	WILLIAMSON RD AT NEALSON HILL ELEMN	Blue A		CATA	Crawford	Meadville	41.623544	-80.138783
35	MORGAN ST AT RAVINE ST	Blue A		CATA	Crawford	Meadville	41.626464	-80.136363
36	MORGAN VILLAGE DR	Blue A		CATA	Crawford	Meadville	41.630263	-80.135732
37	ALDEN ST AT CHARLTON ST	Blue A		CATA	Crawford	Meadville	41.633446	-80.136955
38	ALDEN PHYSICAL THERAPY	Blue A		CATA	Crawford	Meadville	41.635144	-80.139442
39	CHESTNUT ST AT EMST PL	Blue A		CATA	Crawford	Meadville	41.635858	-80.141517
40	CHESTNUT ST AT ORCHARD PL	Blue A		CATA	Crawford	Meadville	41.63671	-80.145747
41	YMCA/YWCA	Blue A		CATA	Crawford	Meadville	41.637436	-80.149176
42	DIAMOND PARK AT CHESTNUT ST	Blue A, Saegertown		CATA	Crawford	Meadville	41.637785	-80.149868
43	PARKSIDE COMMONS	Blue A		CATA	Crawford	Meadville	41.639139	-80.149375
44	CHESTNUT ST AT COTTAGE ST	Blue A		CATA	Crawford	Meadville	41.638057	-80.152189
45	PARK AVE AT CHERRY ST	Blue A, Blue B, Green, Red B		CATA	Crawford	Meadville	41.638748	-80.152334
46	CENTER ST AT MARKET ST	Blue A, Blue B, Green		CATA	Crawford	Meadville	41.639495	-80.153013
47	CENTER ST AT MULBERRY ST	Blue A, Blue B, Green		CATA	Crawford	Meadville	41.639682	-80.153999
48	CHESTNUT ST AT MARKET ST	Blue B	No Parking Sign needed	CATA	Crawford	Meadville	41.638221	-80.153474
49	PARK AVE AT STEERS ST	Blue B, Red B		CATA	Crawford	Meadville	41.640274	-80.151726
50	MEADVILLE MEDICAL CENTER LIBERTY ST	Blue B, Red A		CATA	Crawford	Meadville	41.641798	-80.146248
51	LIBERTY ST AT RANDOLPH ST	Blue B, Red A		CATA	Crawford	Meadville	41.642436	-80.146046
52	RANDOLPH ST AT KENNEDY ST	Blue B		CATA	Crawford	Meadville	41.642656	-80.144928
53	RANDOLPH ST AT STEWART ST	Blue B		CATA	Crawford	Meadville	41.642652	-80.142847
54	RANDOLPH LN AT GRANT ST	Blue B		CATA	Crawford	Meadville	41.642762	-80.140719
55	N GRANT ST AND WASHINGTON ST	Blue B		CATA	Crawford	Meadville	41.640929	-80.140762
56	WASHINGTON ST AT PENN ST	Blue B		CATA	Crawford	Meadville	41.640387	-80.139659
57	WASHINGTON ST AT HARTMAN ST	Blue B		CATA	Crawford	Meadville	41.638829	-80.134344
58	WASHINGTON ST AT MORGAN ST	Blue B		CATA	Crawford	Meadville	41.638364	-80.132941
59	HILLCREST	Blue B		CATA	Crawford	Meadville	41.636911	-80.128494
60	MARIGOLD DR LESLIE RD	Blue B		CATA	Crawford	Meadville	41.651142	-80.113812
61	NORTH GATE APTS	Blue B		CATA	Crawford	Meadville	41.652272	-80.11496
62	MEADVILLE AREA REC COMPLEX	Blue B		CATA	Crawford	Meadville	41.632581	-80.127389
63	NORTH ST AT ARBORETUM DR	Blue B		CATA	Crawford	Meadville	41.636348	-80.130082
64	NORTH ST AT HARTMAN ST	Blue B		CATA	Crawford	Meadville	41.637687	-80.134545
65	NORTH ST AT CLARK ST	Blue B		CATA	Crawford	Meadville	41.638489	-80.137957
66	NORTH ST AT PENN ALLEY	Blue B		CATA	Crawford	Meadville	41.638832	-80.139821
67	NORTH ST AT GRANT ST	Blue B		CATA	Crawford	Meadville	41.639154	-80.14156
68	NORTH ST AT GROVE ST	Blue B		CATA	Crawford	Meadville	41.639347	-80.142652
69	GROVE ST AT WALNUT ST	Blue B		CATA	Crawford	Meadville	41.637911	-80.143542
70	GROVE ST AT CHESTNUT	Blue B		CATA	Crawford	Meadville	41.635682	-80.144382
71	ARCH ST AT CLINTON CT	Blue B		CATA	Crawford	Meadville	41.635594	-80.146708
72	CHAPS	Blue B		CATA	Crawford	Meadville	41.636188	-80.149587
73	ARCH ST AT FEDERAL	Blue B		CATA	Crawford	Meadville	41.636682	-80.152126
74	PARK AVE & ARCH ST	Blue B, Green, Red B		CATA	Crawford	Meadville	41.637322	-80.152927
75	PARK AVE AT CLINTON CT	Blue B, Green, Red B		CATA	Crawford	Meadville	41.637564	-80.152853
76	BESSEMER ST AT REYNOLDS AVE	Green		CATA	Crawford	Meadville	41.64625	-80.156708
77	VALLONIA	Green		CATA	Crawford	Meadville	41.636894	-80.158472
78	PARK PLAZA	Green		CATA	Crawford	Meadville	41.623359	-80.160672
79	GIANT EAGLE MEADVILLE	Green		CATA	Crawford	Meadville	41.61866	-80.166624
80	DAYS INN	Green		CATA	Crawford	Meadville	41.621013	-80.169974
81	CHOVYS	Green		CATA	Crawford	Meadville	41.621355	-80.172302
82	CONNEAUT LAKE RD AT MCDONALDS	Green		CATA	Crawford	Meadville	41.623795	-80.199434
83	CONNEAUT LAKE RD AT WINKLER DR	Green		CATA	Crawford	Meadville	41.623294	-80.200984
84	CONNEAUT LAKE RD AT KINGS	Green		CATA	Crawford	Meadville	41.622251	-80.205873

StopID	StopName	Routes	Notes	Agency	County	City	LAT	LOn
85	CONNEAUT LAKE RD AT AIRPORT RD	Green		CATA	Crawford	Meadville	41.621678	-80.208566
86	STAPLES MEADVILLE	Green		CATA	Crawford	Meadville	41.622377	-80.211513
87	WALMART MEADVILLE	Green		CATA	Crawford	Meadville	41.621748	-80.213557
88	CRAWFORD LANDING	Green		CATA	Crawford	Meadville	41.619569	-80.215129
89	SHADY ACRES	Green		CATA	Crawford	Meadville	41.617112	-80.207211
90	MCMATH AVE AT PERRY HWY	Green		CATA	Crawford	Meadville	41.616614	-80.20103
91	MOVIES AT MEADVILLE	Green		CATA	Crawford	Meadville	41.620139	-80.20232
92	VERNON PLACE	Green		CATA	Crawford	Meadville	41.621578	-80.199823
93	KMART MEADVILLE	Green		CATA	Crawford	Meadville	41.622953	-80.199014
94	CONNEAUT LAKE RD AT CHARLES ST	Green		CATA	Crawford	Meadville	41.621187	-80.172731
95	MERCER PK AT PENNDOT	Green		CATA	Crawford	Meadville	41.622781	-80.167368
96	MERCER PK AT MILL ST	Green		CATA	Crawford	Meadville	41.627398	-80.164318
97	KERTTOWN	Green		CATA	Crawford	Meadville	41.629192	-80.163208
98	MERCER PK AT HOPE ST	Green		CATA	Crawford	Meadville	41.630506	-80.162206
99	MERCER PK AT FRENCH CREEK PKWY	Green		CATA	Crawford	Meadville	41.632514	-80.159537
100	WILLOW ST AT POMONA ALLEY	Green		CATA	Crawford	Meadville	41.632412	-80.156574
101	PARK AVE AT PINE PL	Green		CATA	Crawford	Meadville	41.634844	-80.153838
102	PARK AVE AT SOUTH ST	Green		CATA	Crawford	Meadville	41.636333	-80.153268
103	CHESTNUT AT FEDERAL CT	Red A, Saegertown		CATA	Crawford	Meadville	41.637786	-80.151383
104	BETHESDA MAIN	Saegertown		CATA	Crawford	Meadville	41.683592	-80.127464
105	RT 86 AT MORRIS RD NORTH	Saegertown		CATA	Crawford	Meadville	41.689176	-80.124972
106	FOUNTAIN PARK	Saegertown		CATA	Crawford	Meadville	41.694206	-80.118316
107	WOODCOCK CREEK PARK	Saegertown		CATA	Crawford	Meadville	41.698059	-80.105705
108	CC CARE CENTER	Saegertown		CATA	Crawford	Meadville	41.704868	-80.125139
109	CC CORRECTIONS	Saegertown		CATA	Crawford	Meadville	41.707192	-80.129066
110	SAEGERTOWN PLAZA	Saegertown		CATA	Crawford	Meadville	41.719122	-80.142756
111	CHUCK-A-LOU	Saegertown		CATA	Crawford	Meadville	41.729195	-80.149625
112	SAEGERTOWN LIBRARY	Saegertown		CATA	Crawford	Meadville	41.718954	-80.142784
113	RT 86 AT MORRIS RD SOUTH	Saegertown		CATA	Crawford	Meadville	41.689628	-80.125253
114	PARK AVE AT ALLEGHENY	Red A, Saegertown		CATA	Crawford	Meadville	41.652342	-80.146662
115	PARK AVE AT NORTH ST	Saegertown		CATA	Crawford	Meadville	41.641569	-80.151469
118	CHESTNUT ST AT LIBERTY ST	Red A		CATA	Crawford	Meadville	41.637105	-80.148248
119	LIBERTY ST AT CENTER	Red A		CATA	Crawford	Meadville	41.638241	-80.14758
122	RANDOLF ST AT N MAIN ST	Red A		CATA	Crawford	Meadville	41.642727	-80.148958
123	N MAIN AT ROSE ST	Red A		CATA	Crawford	Meadville	41.644861	-80.147752
124	N MAIN AT HENRY ST	Red A		CATA	Crawford	Meadville	41.646206	-80.146992
125	N MAIN ST AT E COLLEGE AVE	Red A		CATA	Crawford	Meadville	41.648585	-80.145606
126	N MAIN ST AT E JOHN ST	Red A		CATA	Crawford	Meadville	41.650736	-80.144374
127	N MAIN ST AT BYLLOSBY AVE	Red A		CATA	Crawford	Meadville	41.652732	-80.143254
128	N MAIN ST AT HAMILTON AVE	Red A		CATA	Crawford	Meadville	41.654667	-80.142137
129	N MAIN ST AT SUNSET DR	Red A		CATA	Crawford	Meadville	41.656884	-80.140493
130	N MAIN ST AT JACKSON PARK DR	Red A		CATA	Crawford	Meadville	41.65923	-80.138886
131	N MAIN ST AT LESLIE RD	Red A		CATA	Crawford	Meadville	41.666716	-80.135238
132	GASTEIGER RD AT LOCUST LN	Red A		CATA	Crawford	Meadville	41.671594	-80.136974
133	MEADVILLE REHAB	Red A		CATA	Crawford	Meadville	41.672535	-80.142257
134	PARK AVE AT GASTEIGER RD	Red A		CATA	Crawford	Meadville	41.670906	-80.143074
135	YORKTOWN DR AT AZELEA ST	Red A		CATA	Crawford	Meadville	41.67046	-80.140908
136	GOLFVIEW MANNOR	Red A		CATA	Crawford	Meadville	41.669778	-80.141315
137	WESTBURY UM COMMUNITY	Red A		CATA	Crawford	Meadville	41.663944	-80.142737
138	PARK AVE AT COLE DR	Red A		CATA	Crawford	Meadville	41.662043	-80.143145
139	PARK AVE AT COLLEGE MAINTENANCE RD	Red A		CATA	Crawford	Meadville	41.658053	-80.144807
140	PARK AVE AT ST. JOHNS ST	Red A		CATA	Crawford	Meadville	41.650799	-80.147945
141	PARK AVE AT PROSPECT ST	Red A		CATA	Crawford	Meadville	41.648965	-80.148642
142	PARK AVE AT BALDWIN ST	Red A		CATA	Crawford	Meadville	41.646504	-80.149569
143	PARK AVE AT LOCUST ST	Red A		CATA	Crawford	Meadville	41.644575	-80.150305
144	PARK AVE AT RANDOLF ST	Red A		CATA	Crawford	Meadville	41.643065	-80.150903
145	NORTH ST AT PARK AVE	Red A		CATA	Crawford	Meadville	41.641129	-80.151968
147	BALDWIN AVE AT COLLEGE ST	Red B		CATA	Crawford	Meadville	41.64789	-80.150592
148	BALDWIN AVE AT ALLEGHENY ST	Red B		CATA	Crawford	Meadville	41.649462	-80.151427
149	BALDWIN AVE AT DICK ST	Red B		CATA	Crawford	Meadville	41.653832	-80.153345
150	WILLIAM GILL COMMONS	Red B		CATA	Crawford	Meadville	41.66389	-80.161894
151	BALDWIN AVE AT WESTVIEW DR	Red B		CATA	Crawford	Meadville	41.660408	-80.15691
152	BALDWIN AVE AT MODERN CT	Red B		CATA	Crawford	Meadville	41.656575	-80.154924
153	BALDWIN AVE AT ECHNOZ AVE	Red B		CATA	Crawford	Meadville	41.65433	-80.154001
154	BALDWIN AVE AT OAK ST	Red B		CATA	Crawford	Meadville	41.65171	-80.152595
155	BALDWIN AVE AT GLENWOOD AVE	Red B		CATA	Crawford	Meadville	41.64932	-80.15149
156	SPRING ST AT LORD ST	Red B		CATA	Crawford	Meadville	41.647942	-80.152063
157	SPRING ST AT CUSSEWAGO	Red B		CATA	Crawford	Meadville	41.643484	-80.167212
158	DUNHAM RD AT SPRING ST	Red B		CATA	Crawford	Meadville	41.644286	-80.168564
159	ASBURY MNR W & DUNHAM RD	Red B		CATA	Crawford	Meadville	41.647642	-80.171235
160	DUNHAM RD AT CREEK ST	Red B		CATA	Crawford	Meadville	41.65235	-80.171954
161	COUNTY HUMAN SERVICES	Red B		CATA	Crawford	Meadville	41.654445	-80.172107
162	ROGERS FERRY RD AT ASBURY MANOR	Red B		CATA	Crawford	Meadville	41.65187	-80.165832
163	ROGERS FERRY RD AT COLUMBIA AVE	Red B		CATA	Crawford	Meadville	41.651894	-80.165403
164	LINCOLN AVE AT LYON ST	Red B		CATA	Crawford	Meadville	41.65064	-80.161529
165	LINCOLN AVE AT KEARNEY ST	Red B		CATA	Crawford	Meadville	41.648803	-80.16082
166	LINCOLN AVE AT RACE ST	Red B		CATA	Crawford	Meadville	41.64734	-80.160283
167	TERRACE ST AT BOILEAU PL	Red B		CATA	Crawford	Meadville	41.643539	-80.152507
168	TERRACE ST AT REYNOLDS AVE	Red B		CATA	Crawford	Meadville	41.646025	-80.153754
169	DRAKE MALL	Titusville Green, Titusville Blue		CATA	Crawford	Titusville	41.625837	-79.672455
170	CHAMBER OF COMMERCE	Titusville Green		CATA	Crawford	Titusville	41.627129	-79.67406
171	MONROE AT WALNUT	Titusville Green		CATA	Crawford	Titusville	41.629735	-79.679074
172	MONROE AT OAK	Titusville Green		CATA	Crawford	Titusville	41.632971	-79.679119
173	DILLON DR AT PARK AVE	Titusville Green		CATA	Crawford	Titusville	41.637291	-79.686021
174	GOLDEN LIVING TITUSVILLE	Titusville Green		CATA	Crawford	Titusville	41.638093	-79.682088
175	TITUSVILLE HOSPITAL	Titusville Green		CATA	Crawford	Titusville	41.633228	-79.679947

StopID	StopName	Routes	Notes	Agency	County	City	LAT	LOn
176	ELM ST APTS	Titusville Green		CATA	Crawford	Titusville	41.632006	-79.683894
177	800 BLOCK OF W OAK ST	Titusville Green		CATA	Crawford	Titusville	41.633172	-79.687831
178	WALMART TITUSVILLE	Titusville Green		CATA	Crawford	Titusville	41.633347	-79.698369
179	SPRING ST AT SCHWARTZ LN	Titusville Green		CATA	Crawford	Titusville	41.631697	-79.688275
180	SPRING ST AT MAIN ST	Titusville Green		CATA	Crawford	Titusville	41.627571	-79.681911
181	TITUSVILLE POST OFFICE	Titusville Green		CATA	Crawford	Titusville	41.626416	-79.674952
182	BILLIE BROWN BUILDING	Titusville Blue		CATA	Crawford	Titusville	41.625147	-79.669799
183	TITUSVILLE MIDDLE SCHOOL	Titusville Blue		CATA	Crawford	Titusville	41.625219	-79.667481
184	CENTRAL TOWERS	Titusville Blue		CATA	Crawford	Titusville	41.62651	-79.670524
185	BENSON MEMORIAL LIBRARY	Titusville Blue		CATA	Crawford	Titusville	41.629653	-79.673265
186	BROOK ST & N FRANKLIN ST	Titusville Blue		CATA	Crawford	Titusville	41.632117	-79.671439
187	ROCKWOOD DR AT BRIARWOOD APTS	Titusville Blue		CATA	Crawford	Titusville	41.63477	-79.657267
188	ROCKWOOD DR AT TITUSVILLE APTS	Titusville Blue		CATA	Crawford	Titusville	41.635187	-79.654671
189	N DRAKE ST AT BROOK ST	Titusville Blue		CATA	Crawford	Titusville	41.632081	-79.6697
190	TITUSVILLE HIGH SCHOOL	Titusville Blue		CATA	Crawford	Titusville	41.630697	-79.668874
191	UNIV. PITT AT SPRUCE ST	Titusville Blue		CATA	Crawford	Titusville	41.630697	-79.664234
192	E SPRUCE ST APTS	Titusville Blue		CATA	Crawford	Titusville	41.630633	-79.655986
193	BURGESS PARK/SENIOR CENTER	Titusville Blue		CATA	Crawford	Titusville	41.63017	-79.660787
194	CATA OFFICE TITUSVILLE	Titusville Blue		CATA	Crawford	Titusville	41.626345	-79.659528
195	BUFFALO ST GAZEBO	Franklin North, Franklin South, Franklin Express, Intercity		CATA	Venango	Franklin	41.396609	-79.830247
196	ATLANTIC AVE & 13TH ST	Franklin North		CATA	Venango	Franklin	41.403883	-79.834277
197	SAVE-A-LOT	Franklin North		CATA	Venango	Franklin	41.404825	-79.84066
198	OAK HILL APTS	Franklin North		CATA	Venango	Franklin	41.415343	-79.838038
199	DRAKE AVE & MEADVILLE PK	Franklin North		CATA	Venango	Franklin	41.408134	-79.835777
200	CIRCLE ST	Franklin North		CATA	Venango	Franklin	41.408005	-79.830177
201	PARKER AVE AT FOX ST	Franklin North		CATA	Venango	Franklin	41.4099	-79.824524
202	K-MART FRANKLIN	Franklin North		CATA	Venango	Franklin	41.404046	-79.810582
203	GIANT EAGLE FRANKLIN	Franklin North		CATA	Venango	Franklin	41.403145	-79.808855
204	14TH ST AT BUFFALO ST	Franklin South		CATA	Venango	Franklin	41.397461	-79.834014
205	UNI-MART FRANKLIN	Franklin South		CATA	Venango	Franklin	41.384951	-79.849376
206	EVERGREEN ARBORS	Franklin South		CATA	Venango	Franklin	41.378987	-79.850631
207	12TH & RAILROAD ST	Franklin South		CATA	Venango	Franklin	41.394923	-79.83048
208	SHOP-N-SAVE FRANKLIN	Franklin South	Sign missing	CATA	Venango	Franklin	41.393658	-79.827261
209	8TH AND BUFFALO ST	Franklin South		CATA	Venango	Franklin	41.389262	-79.822621
210	JUSTUS TRAIL AND BREDINSBURG RD	Franklin South		CATA	Venango	Franklin	41.387462	-79.817255
211	SUGAR VALLEY LODGE-SUGAR CREEK	Franklin Express		CATA	Venango	Franklin	41.413423	-79.82692
212	WOOD HAVEN SOUTH MOBILE HOME	Franklin Express		CATA	Venango	Franklin	41.376625	-79.904054
213	SUGAR VALLEY LODGE-POLK	Franklin Express		CATA	Venango	Franklin	41.363799	-79.930673
214	ERIE ST	Franklin Express		CATA	Venango	Franklin	41.368212	-79.926928
215	MAURER'S TRADING POST	Franklin Express		CATA	Venango	Franklin	41.356928	-79.871429
216	BLIZZARD PARKING LOT	Oil City South, Oil City North, Intercity		CATA	Venango	Oil City	41.433403	-79.707424
217	FRONT ST AT CENTRAL AVE	Oil City South	Sign missing	CATA	Venango	Oil City	41.434611	-79.706841
218	W 1ST ST AT MITCHELL AVE	Oil City South	Sign missing	CATA	Venango	Oil City	41.420006	-79.725901
219	CLARION UNIV. VENANGO	Oil City South	Sign missing	CATA	Venango	Oil City	41.409784	-79.728601
220	MORAN TOWERS	Oil City South	Sign missing	CATA	Venango	Oil City	41.4251	-79.71989
221	W 7TH & INNIS ST	Oil City South	Sign missing	CATA	Venango	Oil City	41.420799	-79.714158
222	INNIS & W 1ST ST	Oil City South	Sign missing	CATA	Venango	Oil City	41.426258	-79.718616
223	TOWNE TOWERS	Oil City South	Sign missing	CATA	Venango	Oil City	41.427527	-79.709388
224	GIANT EAGLE OIL CITY	Oil City South		CATA	Venango	Oil City	41.426859	-79.704697
225	BISSELL & SEELEY AVE	Oil City North		CATA	Venango	Oil City	41.435176	-79.701693
226	BISSELL & HARRIOTT AVE	Oil City North		CATA	Venango	Oil City	41.432784	-79.701992
227	E BISSELL AVE & FOREST PL	Oil City North		CATA	Venango	Oil City	41.427274	-79.695952
228	COLBERT AVE AT WABASH AVE	Oil City North		CATA	Venango	Oil City	41.421948	-79.694288
229	OAK GROVE ST & GLENVIEW AVE	Oil City North		CATA	Venango	Oil City	41.423116	-79.692627
230	FERN CT CENTURY TERRACE	Oil City North		CATA	Venango	Oil City	41.423116	-79.692627
231	VENANGO TECHNOLOGY CENTER	Oil City North		CATA	Venango	Oil City	41.430018	-79.683548
232	OAK RD AT ROCKWOOD AVE	Oil City North		CATA	Venango	Oil City	41.445831	-79.680058
233	GOLDEN LIVING OIL CITY	Oil City North		CATA	Venango	Oil City	41.46226	-79.666974
234	THORNE'S MARKET	Oil City North		CATA	Venango	Oil City	41.441354	-79.68927
235	COOPER AND HOFFMAN AVE	Oil City North		CATA	Venango	Oil City	41.436483	-79.700041
236	COOPER AVE & CLARION ST	Oil City North		CATA	Venango	Oil City	41.438339	-79.702638
237	MEMORIAL DR	Oil City North	Sign missing	CATA	Venango	Oil City	41.441135	-79.707395
238	BIG LOTS/GOODWILL FRANKLIN	Intercity	Sign missing	CATA	Venango	Franklin	41.405367	-79.802136
239	RENO POST OFFICE	Intercity	Sign missing	CATA	Venango	Reno	41.409662	-79.751974
242	PINOAK VILLAGE	Intercity		CATA	Venango	Cranberry	41.40524	-79.706615
243	SURGERY & LASER CTR	Intercity	Sign missing	CATA	Venango	Cranberry	41.397396	-79.70307
244	SENECA COMMONS	Intercity		CATA	Venango	Seneca	41.377915	-79.70415
245	UPMC HOSPITAL	Intercity	Sign missing	CATA	Venango	Cranberry	41.360815	-79.701093
246	WAL-MART CRANBERRY	Intercity		CATA	Venango	Cranberry	41.360815	-79.701093
247	BUFFALO ST AT 11TH EB	Intercity	Sign missing	CATA	Venango	Franklin	41.394716	-79.827751
248	PENNWOOD CENTER PM	Intercity	Sign missing	CATA	Venango	Franklin	41.40131	-79.810929
258	TRANSIT CENTER	North-South, Sheffield, Youngsville		TAWC	Warren	Warren	41.842184	-79.145463
259	PENN AVE AT LIBERTY ST_SB	North-South, Youngsville	Sign missing	TAWC	Warren	Warren	41.844478	-79.147388
260	WARREN GENERAL HOSPITAL	North-South, Youngsville	Sign missing	TAWC	Warren	Warren	41.843747	-79.154693
261	PENN AVE AT POPLAR ST_WB	Youngsville		TAWC	Warren	Warren	41.845405	-79.151599
262	ST JOES CHURCH_WB	Youngsville		TAWC	Warren	Warren	41.845527	-79.153568
263	PENN AVE AT UNION ST_WB	Youngsville		TAWC	Warren	Warren	41.844886	-79.157181
264	PENN AVE AT CHESTNUT ST_WB	Youngsville		TAWC	Warren	Warren	41.842905	-79.161123
265	PENN AVE AT PINE ST_WB	Youngsville		TAWC	Warren	Warren	41.841386	-79.164723
266	PENN AVE AT EDDY ST_WB	Youngsville		TAWC	Warren	Warren	41.839966	-79.168181
267	PENN AVE AT WETMORE ST_WB	Youngsville		TAWC	Warren	Warren	41.839311	-79.169691
268	LUDLOW ST AT HOLIDAY INN_WB	Youngsville		TAWC	Warren	Warren	41.83658	-79.169656
269	ROUTE 6 AT SCIENTIFIC RD_WB	Youngsville		TAWC	Warren	Conewango	41.83824	-79.183489
270	ROUTE 6 AT PRESTON RD_WB	Youngsville		TAWC	Warren	Conewango	41.839886	-79.200871
271	ROUTE 6 AT WEILER RD_WB	Youngsville		TAWC	Warren	Conewango	41.841954	-79.212482

StopID	StopName	Routes	Notes	Agency	County	City	LAT	LOn
272	ROUTE 6 AT OLD BROOKSIDE _WB	Youngsville	Sign missing	TAWC	Warren	Conewango	41.842791	-79.214773
273	ROUTE 6 AT YANKEE BUSH _WB	Youngsville		TAWC	Warren	Conewango	41.843147	-79.216307
274	ROUTE 6 AT SCOTT RUN ROAD _WB	Youngsville		TAWC	Warren	Conewango	41.84874	-79.242124
275	BLAIR IN IRVINE _WB	Youngsville		TAWC	Warren	Youngsville	41.841928	-79.248934
276	IRVINE _WB	Youngsville		TAWC	Warren	Youngsville	41.839737	-79.268149
277	ROUSE MANOR _WB	Youngsville		TAWC	Warren	Youngsville	41.844395	-79.298591
278	BROKENSTRAW APTS _WB	Youngsville		TAWC	Warren	Youngsville	41.848007	-79.302972
279	WEST MAIN ST AT WATER ST _WB	Youngsville		TAWC	Warren	Youngsville	41.849843	-79.324046
280	NORTH MAIN ST AT 8TH ST _WB	Youngsville	Sign missing	TAWC	Warren	Youngsville	41.858589	-79.323052
281	HIGH ST AT MCGRAW ST _WB	Youngsville	Sign missing	TAWC	Warren	Youngsville	41.85812	-79.32529
282	NORTH MAIN AT KOZY CORNER _EB	Youngsville		TAWC	Warren	Youngsville	41.852622	-79.319188
283	YOUNGSVILLE PHARMACY _EB	Youngsville		TAWC	Warren	Youngsville	41.851696	-79.317008
284	EAST MAIN ST AT CHURCH ST _EB	Youngsville	Far-Side	TAWC	Warren	Youngsville	41.851236	-79.315235
285	YOUNGSVILLE MEDICAL CENTER _EB	Youngsville		TAWC	Warren	Youngsville	41.850111	-79.31106
286	OLD ABPLANALP RESTAURANT _EB	Youngsville		TAWC	Warren	Youngsville	41.849121	-79.307417
287	BROKENSTRAW APTS _EB	Youngsville		TAWC	Warren	Youngsville	41.848034	-79.303226
290	ROUTE 6 AT SCOTT RUN ROAD _EB	Youngsville		TAWC	Warren	Conewango	41.848392	-79.242535
291	ROUTE 6 AT YANKEE BUSH RD _EB	Youngsville		TAWC	Warren	Conewango	41.843061	-79.217171
292	YANKEE BUSH RD AT RIVER RD _EB	Youngsville		TAWC	Warren	Conewango	41.8402	-79.217804
293	RIVER RD AT MOORE DRIVE _EB	Youngsville		TAWC	Warren	Conewango	41.836424	-79.210095
294	RIVER RD AT PRESTON RD _EB	Youngsville		TAWC	Warren	Conewango	41.837193	-79.200562
295	PRESTON RD AT ROUTE 6 _EB	Youngsville		TAWC	Warren	Conewango	41.839127	-79.200325
296	ROUTE 6 AT SCIENTIFIC RD _EB	Youngsville		TAWC	Warren	Conewango	41.837912	-79.183985
297	LUDLOW ST AT NORTHWEST BANK _EB	Youngsville		TAWC	Warren	Warren	41.836831	-79.169525
298	PENN AVE AT WETMORE ST _EB	Youngsville		TAWC	Warren	Warren	41.838992	-79.170091
299	PENN AVE AT EDDY ST _EB	Youngsville		TAWC	Warren	Warren	41.839983	-79.167737
300	PENN AVE AT EOC _EB	Youngsville		TAWC	Warren	Warren	41.841499	-79.16412
301	PENN AVE AT CHESTNUT ST _EB	Youngsville		TAWC	Warren	Warren	41.843282	-79.160201
302	UNION ST AT PENN AVE _EB	Youngsville		TAWC	Warren	Warren	41.845259	-79.156985
303	4TH ST AT LAUREL ST _EB	Youngsville		TAWC	Warren	Warren	41.84655	-79.155847
304	4TH ST AT HAZEL ST _EB	Youngsville		TAWC	Warren	Warren	41.846969	-79.153459
305	4TH ST AT HICKORY ST _EB	Youngsville		TAWC	Warren	Warren	41.847444	-79.15035
306	HICKORY ST AT BLAIR CORP. _EB	Youngsville		TAWC	Warren	Warren	41.84631	-79.149813
307	PENN AVE AT LIBERTY ST _SB	North-South, Youngsville		TAWC	Warren	Warren	41.844386	-79.147556
308	BILO PLAZA _WB	North-South, Sheffield		TAWC	Warren	Warren	41.842397	-79.143411
310	PENN AVE AT FRANKLIN ST _SB	North-South		TAWC	Warren	Warren	41.842655	-79.137526
311	ELM ST AT PENN AVE _SB	North-South		TAWC	Warren	Warren	41.842311	-79.137204
312	PENN AVE AT CARVER ST _EB	Sheffield		TAWC	Warren	Warren	41.840328	-79.134542
313	PENN AVE AT SOUTH ST _EB	Sheffield		TAWC	Warren	Warren	41.83964	-79.133683
314	PENN AVE AT CENTRAL ST _EB	Sheffield		TAWC	Warren	Warren	41.837012	-79.130533
315	PENN AVE AT PARKER ST _EB	Sheffield		TAWC	Warren	Warren	41.835221	-79.128742
316	PENN AVE AT GRANT ST _EB	Sheffield		TAWC	Warren	Warren	41.833894	-79.127537
317	PENN AVE AT MARION ST _EB	Sheffield		TAWC	Warren	Warren	41.831771	-79.125373
318	PENN AVE AT MAPLE ST _EB	Sheffield		TAWC	Warren	Warren	41.829337	-79.122789
319	PENN AVE AT GLADE KEYSTONE _EB	Sheffield		TAWC	Warren	Warren	41.827148	-79.120431
320	ROUTE 6 AT SEARS _EB	Sheffield		TAWC	Warren	Warren	41.820159	-79.110205
321	ROUTE 6 AT GRIFF HILL ROAD _EB	Sheffield		TAWC	Warren	Warren	41.816201	-79.10388
322	ROUTE 6 AT CLARENDON _EB	Sheffield		TAWC	Warren	Clarendon	41.780162	-79.093642
323	ROUTE 6 AT WELDBANK _EB	Sheffield		TAWC	Warren	Warren	41.760797	-79.080298
324	ROUTE 6 AT OLD WERTZ STATION _EB	Sheffield		TAWC	Warren	Warren	41.746694	-79.067852
325	MILL STREET _EB	Sheffield		TAWC	Warren	Warren	41.746918	-79.068239
326	UNIMART _EB	Sheffield		TAWC	Warren	Sheffield	41.702586	-79.034328
327	RUTH SMITH CENTER _EB	Sheffield		TAWC	Warren	Sheffield	41.700009	-79.030162
328	SHEFFIELD SENIOR CENTER _WB	Sheffield		TAWC	Warren	Sheffield	41.697934	-79.029921
329	TIONESTA ST AT OLD BP _WB	Sheffield		TAWC	Warren	Sheffield	41.706309	-79.038461
330	ROUTE 6 AT FOUR MILE RD _WB	Sheffield		TAWC	Warren	Sheffield	41.723249	-79.052252
331	ROUTE 6 AT SIX MILE RD _WB	Sheffield		TAWC	Warren	Warren	41.74735	-79.067745
332	ROUTE 6 AT JOHNSON TIRE _WB	Sheffield		TAWC	Warren	Warren	41.760877	-79.079633
333	CLARENDON POST OFFICE _WB	Sheffield		TAWC	Warren	Clarendon	41.780263	-79.093514
334	BAKERS GULF STATION _WB	Sheffield		TAWC	Warren	Clarendon	41.783673	-79.097797
335	ROUTE 62 AT DUTCHMAN RUN _WB	Sheffield		TAWC	Warren	Mead	41.799354	-79.099168
336	ROUTE 62 AT OLD MINERALL WELL _WB	Sheffield		TAWC	Warren	Warren	41.807973	-79.093602
337	PENN AVE AT HEMLOCK ST _WB	Sheffield		TAWC	Warren	Warren	41.825469	-79.118687
338	PENN AVE AT ROLLINS ST _WB	Sheffield		TAWC	Warren	Warren	41.827827	-79.120931
339	PENN AVE AT LOCUST ST _WB	Sheffield	Sign missing	TAWC	Warren	Warren	41.828646	-79.121758
340	PENN AVE AT MAPLE ST _WB	Sheffield		TAWC	Warren	Warren	41.829248	-79.12237
341	PENN AVE AT NORTH ST _WB	Sheffield		TAWC	Warren	Warren	41.829999	-79.123246
342	MARION ST AT PENN AVE _WB	Sheffield		TAWC	Warren	Warren	41.831934	-79.124887
343	MADISON AVE AT MARION ST _WB	Sheffield		TAWC	Warren	Warren	41.833197	-79.123325
344	MADISON AVE AT HAMMON ST _WB	Sheffield		TAWC	Warren	Warren	41.834692	-79.125042
345	MADISON AVE AT GRANT ST _WB	Sheffield		TAWC	Warren	Warren	41.835679	-79.126168
346	MADISON AVE AT DARTMOUTH ST _WB	Sheffield		TAWC	Warren	Warren	41.836954	-79.127611
347	MADISON AVE AT CENTRAL AVE _WB	Sheffield		TAWC	Warren	Warren	41.837772	-79.128566
348	MADISON AVE AT IRVINE ST _WB	Sheffield		TAWC	Warren	Warren	41.83933	-79.130346
349	MADISON AVE AT SOUTH ST _WB	Sheffield		TAWC	Warren	Warren	41.840597	-79.131758
350	MADISON AVE AT PROSPECT ST _WB	Sheffield		TAWC	Warren	Warren	41.842535	-79.134108
351	BUCHANAN ST AT PENN AVE _WB	Sheffield		TAWC	Warren	Warren	41.842454	-79.13631
352	PENN AVE AT FRANKLIN ST _WB	North-South, Sheffield		TAWC	Warren	Warren	41.842685	-79.1372
353	CONEWANGO TOWERS	North-South, Sheffield		TAWC	Warren	Warren	41.84187	-79.139784
354	LEXINGTON AVE AT ELM ST	North-South, Sheffield		TAWC	Warren	Warren	41.841257	-79.138929
355	PENN AVE AT EAST ST _NB	North-South, Sheffield		TAWC	Warren	Warren	41.84417	-79.142856
356	PENN AVE AT CONEWANGO AVE _WB	Sheffield		TAWC	Warren	Warren	41.843323	-79.138842
357	EAST ST AT WATER ST _WB	Sheffield		TAWC	Warren	Warren	41.843626	-79.142997
358	BILO PLAZA _EB	North-South, Sheffield		TAWC	Warren	Warren	41.842819	-79.143759
359	MARKET ST AT SECOND AVE _NB	North-South		TAWC	Warren	Warren	41.845131	-79.145323
360	MARKET ST AT FOURTH AVE _NB	North-South		TAWC	Warren	Warren	41.847985	-79.146101

StopID	StopName	Routes	Notes	Agency	County	City	LAT	LOn
361	MARKET ST AT FIFTH AVE_NB	North-South		TAWC	Warren	Warren	41.849816	-79.146568
362	STATE ST AT BP STATION_NB	North-South		TAWC	Warren	Conewango	41.863938	-79.15395
363	STATE ST AT WIC OFFICE_NB	North-South		TAWC	Warren	Warren	41.871546	-79.148228
364	WARREN STATE HOSPITAL_NB	North-South		TAWC	Warren	Warren	41.879323	-79.147949
365	WALMART_NB	North-South		TAWC	Warren	Warren	41.881811	-79.151779
366	WARREN MALL_NB	North-South		TAWC	Warren	Warren	41.896559	-79.147675
367	VA CLINIC_NB	North-South		TAWC	Warren	Warren	41.905475	-79.15172
368	ELM ST AT PENN AVE_NB	North-South, Sheffield		TAWC	Warren	Warren	41.842197	-79.137177
369	CONEWANGO AVE AT JACKSON AVE_NB	North-South		TAWC	Warren	Warren	41.844876	-79.13868
370	CONEWANGO AVE AT JEFFERSON ST_NB	North-South		TAWC	Warren	Warren	41.846763	-79.138336
371	WARREN AREA HIGH SCHOOL	North-South		TAWC	Warren	Warren	41.857488	-79.136254
372	FIFTH AVE AT BROOK ST_NB	North-South		TAWC	Warren	Warren	41.851814	-79.139161
373	CONEWANGO AVE AT FIFTH AVE_NB	North-South		TAWC	Warren	Warren	41.851408	-79.140092
374	CONEWANGO AVE AT PIONEER ST_NB	North-South		TAWC	Warren	Warren	41.853333	-79.14161
375	CONEWANGO AVE AT FRANK ST_NB	North-South		TAWC	Warren	Warren	41.855266	-79.143105
376	CONEWANGO AVE AT GLADE AVE_NB	North-South		TAWC	Warren	Warren	41.856876	-79.144365
377	CONEWANGO AVE AT MCPHERSON ST_NB	North-South		TAWC	Warren	Warren	41.859712	-79.146455
378	CONEWANGO AVE AT CONNECTICUT AVE_NB	North-South		TAWC	Warren	Warren	41.861526	-79.147843
379	CONEWANGO AVE AT QUAKER HILL RD_NB	North-South		TAWC	Warren	North Warren	41.863687	-79.149021
380	CONEWANGO AVE AT CONEWANGO APTS	North-South		TAWC	Warren	Warren	41.868798	-79.147407
381	CONEWANGO AVE AT HACKNEY MEADOWS RD_NB	North-South		TAWC	Warren	North Warren	41.883563	-79.137952
382	CONEWANGO AVE AT SCHUMANN RD_NB	North-South		TAWC	Warren	North Warren	41.886652	-79.137966
383	CONEWANGO AVE AT HATCH RUN RD_NB	North-South		TAWC	Warren	Warren	41.894499	-79.138126
384	DUNCAN BLVD AT MAIN AVE_PT	North-South		TAWC	Warren	Pleasant	41.835543	-79.15365
385	DUNCAN BLVD AT CALLENDER ST_PT	North-South		TAWC	Warren	Pleasant	41.834682	-79.156456
386	WARREN MANOR_PT	North-South		TAWC	Warren	Warren	41.832919	-79.175828
387	MAX DRIVE_PT	North-South		TAWC	Warren	Warren	41.83126	-79.181433
388	PLEASANT DR AT DRUMCLIFFE_PT	North-South		TAWC	Warren	Pleasant	41.831452	-79.174933
389	PLEASANT DR AT FULLER AVE_PT	North-South		TAWC	Warren	Pleasant	41.829556	-79.168296
390	COUNTRY FAIR_PT	North-South		TAWC	Warren	Pleasant	41.834166	-79.154037
391	PLEASANT DR AT LINDA LANE_PT	North-South		TAWC	Warren	Pleasant	41.834983	-79.152192
392	PLEASANT DR AT MEADOW LN_PT	North-South		TAWC	Warren	Pleasant	41.835615	-79.150722
393	CRESCENT PARK AT OAKLAND DR_PT	North-South		TAWC	Warren	Warren	41.839843	-79.14732
394	HATCH RUN RD AT CONEWANGO AVE_SB	North-South		TAWC	Warren	North Warren	41.894396	-79.138468
395	CONEWANGO AVE AT SCHUMANN RD_SB	North-South		TAWC	Warren	North Warren	41.886744	-79.138173
396	CONEWANGO AVE AT HACKNEY MEADOW RD_SB	North-South		TAWC	Warren	North Warren	41.883637	-79.138125
398	CONEWANGO AVE AT QUAKER HILL ROAD_SB	North-South		TAWC	Warren	Warren	41.863289	-79.149161
399	CONEWANGO AVE AT CONNECTICUT AVE_SB	North-South		TAWC	Warren	Warren	41.861737	-79.148187
400	CONEWANGO AVE AT MCPHERSON ST_SB	North-South		TAWC	Warren	Warren	41.859676	-79.146545
401	CONEWANGO AVE AT GLADE AVE_SB	North-South		TAWC	Warren	Warren	41.856808	-79.144521
402	CONEWANGO AVE AT FRANK ST_SB	North-South		TAWC	Warren	Warren	41.855397	-79.143451
403	CONEWANGO AVE AT PIONEER ST_SB	North-South		TAWC	Warren	Warren	41.853444	-79.141898
404	CONEWANGO AVE AT REDWOOD ST_SB	North-South		TAWC	Warren	Warren	41.849608	-79.138995
405	CONEWANGO AVE AT FIFTH ST_SB	North-South		TAWC	Warren	Warren	41.85132	-79.140228
406	CONEWANGO AVE AT JEFFERSON ST_SB	North-South		TAWC	Warren	Warren	41.847042	-79.13856
407	CONEWANGO AVE AT JACKSON AVE_SB	North-South		TAWC	Warren	Warren	41.844545	-79.138867
408	STATE ST AT WIC BUILDING_SB	North-South		TAWC	Warren	Warren	41.871446	-79.148533
409	STATE ST AT BP STATION_SB	North-South		TAWC	Warren	Warren	41.863904	-79.154166
410	MARKET ST AT FIFTH AVE_SB	North-South		TAWC	Warren	Warren	41.849441	-79.146633
411	MARKET ST AT FOURTH AVE_SB	North-South		TAWC	Warren	Warren	41.847924	-79.146258
412	MARKET ST AT THIRD AVE_SB	North-South		TAWC	Warren	Warren	41.846498	-79.145813
413	MARKET ST AT SECOND AVE_SB	North-South		TAWC	Warren	Warren	41.844989	-79.145497

Appendix B: Bus Stop Enhancement Recommendations

StopID	Extend to Curb	Remove	Relocate	Landing Area	No Improvement
1				1	
2				1	
3				1	
4				1	
5	1				
6					1
7					
8			1		
11				1	
12	1				
13	1				
14		1			
15		1			
16					1
17	1				
18	1				
19		1			
20		1			
21					1
22	1				
23	1				
24	1				
25	1				
26	1				
27					1
28					1
29					1
30				1	
31					1
32					1
33					1
34					1
35					1
36				1	
37		1			
38	1				
39	1				
40				1	
41				1	
42					1
43					1
44				1	
45			1		
46				1	
47				1	
48			1		

StopID	Extend to Curb	Remove	Relocate	Landing Area	No Improvement
49			1		
50				1	
51					
52	1				
53	1				
54	1				
55	1				
56	1				
57		1			
58	1				
59				1	
60					1
61				1	
62				1	
63					1
64	1				
65	1				
66	1				
67		1			
68	1				
69	1				
70	1				
71		1			
72	1				
73				1	
74		1			
75				1	
76					1
77					1
78				1	
79					1
80					1
81					1
82					1
83					1
84					1
85		1			
86				1	
87				1	
88					1
89				1	
90					1
91				1	
92				1	
93					1
94					1

StopID	Extend to Curb	Remove	Relocate	Landing Area	No Improvement
95					1
96					1
97	1				
98	1				
99	1				
100	1				
101	1				
102	1				
103					1
104				1	
105					1
106					1
107					1
108					1
109					1
110					1
111					1
112					1
113				1	
114	1				
115	1				
118	1				
119	1				
122	1				
123	1				
124	1				
125	1				
126	1				
127		1			
128	1				
129	1				
130		1			
131		1			
132					1
133				1	
134					1
135					1
136					1
137					1
138					1
139					1
140	1				
141	1		1		
142	1				
143		1			
144	1				

StopID	Extend to Curb	Remove	Relocate	Landing Area	No Improvement
145				1	
147					1
148					1
149					1
150				1	
151					1
152					1
153					1
154					1
155				1	
156					1
157					1
158					1
159					1
160					1
161				1	
162	1				
163	1				
164	1				
165	1				
166	1				
167					1
168					1
169				1	
170				1	
171	1				
172	1				
173					1
174					1
175				1	
176	1				
177					1
178				1	
179	1				
180	1				
181				1	
182	1				
183	1				
184	1				
185	1				
186	1				
187					1
188				1	
189				1	
190				1	
191	1				

StopID	Extend to Curb	Remove	Relocate	Landing Area	No Improvement
192					1
193					1
194					1
195					1
196	1				
197	1				
198				1	
199				1	
200					1
201	1				
202				1	
203				1	
204					1
205					1
206					1
207					1
208				1	
209	1				
210					1
211					1
212					1
213					1
214	1				
215					1
216				1	
217				1	
218	1				
219				1	
220				1	
221	1				
222				1	
223					
224				1	
225	1				
226	1				
227	1				
228	1				
229	1				
230				1	
231				1	
232					1
233				1	
234					1
235	1				
236				1	
237	1				

StopID	Extend to Curb	Remove	Relocate	Landing Area	No Improvement
238				1	
239	1				
242					1
243				1	
244				1	
245				1	
246				1	
247	1				
248				1	
258				1	
259				1	
260	1				
261	1				
262	1				
263	1				
264	1				
265	1				
266	1				
267				1	
268	1				
269					1
270					1
271					1
272					1
273					1
274					1
275				1	
276					1
277					1
278					1
279	1				
280					1
281					1
282	1				
283	1				
284	1		1		
285	1				
286	1				
287					1
290					1
291					1
292					1
293				1	
294					1
295					1
296					1

StopID	Extend to Curb	Remove	Relocate	Landing Area	No Improvement
297	1		1		
298	1		1		
299	1				
300	1				
301	1				
302	1				
303	1				
304	1				
305	1				
306	1			1	
307					1
308				1	
310				1	
311				1	
312				1	
313				1	
314	1				
315	1				
316	1				
317	1				
318	1				
319					1
320					1
321					1
322	1				
323					1
324					1
325					1
326	1				
327					1
328				1	
329					1
330					1
331					1
332					1
333				1	
334					1
335					1
336					1
337	1				
338		1			
339				1	
340		1			
341				1	
342				1	
343	1				

StopID	Extend to Curb	Remove	Relocate	Landing Area	No Improvement
344	1				
345	1				
346	1				
347	1				
348	1				
349	1				
350	1				
351	1				
352	1				
353				1	
354	1				
355				1	
356				1	
357				1	
358				1	
359				1	
360	1				
361	1				
362	1				
363	1				
364				1	
365				1	
366				1	
367				1	
368	1				
369	1				
370	1				
371	1				
372	1				
373	1				
374	1				
375	1				
376	1				
377	1				
378	1				
379					1
380					1
381					1
382					1
383					1
384					1
385					1
386				1	
387					1
388					1
389					1

StopID	Extend to Curb	Remove	Relocate	Landing Area	No Improvement
390					1
391					1
392					1
393	1				
394	1				
395	1				
396	1				
398	1				
399	1				
400	1				
401	1				
402	1				
403	1				
404	1				
405	1				
406				1	
407	1				
408	1				
409	1				
410	1				
411	1				
412	1				
413	1				

Michael Baker

I N T E R N A T I O N A L

Contact Information:

Andy Batson, AICP, Project Manager
4431 North Front Street, 2nd Floor
Harrisburg, PA 17110
abatson@mbakerintl.com