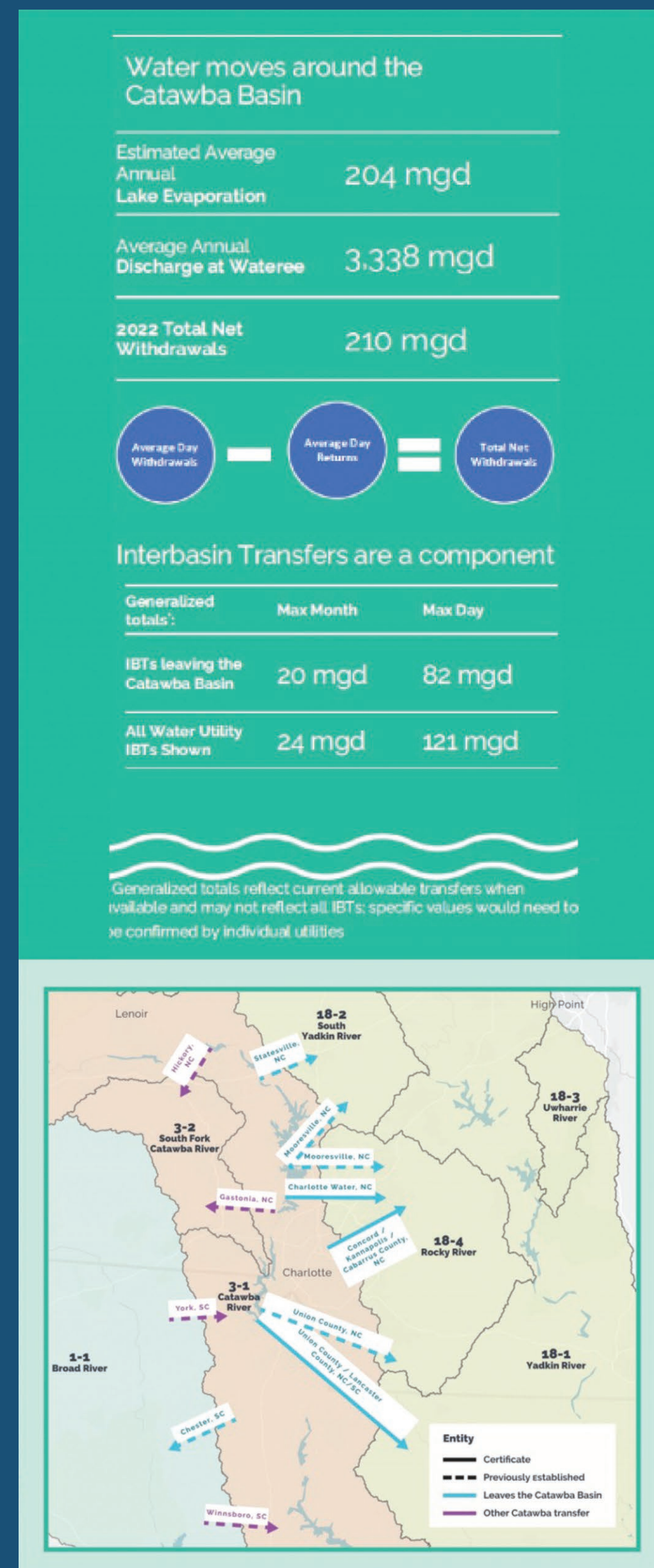
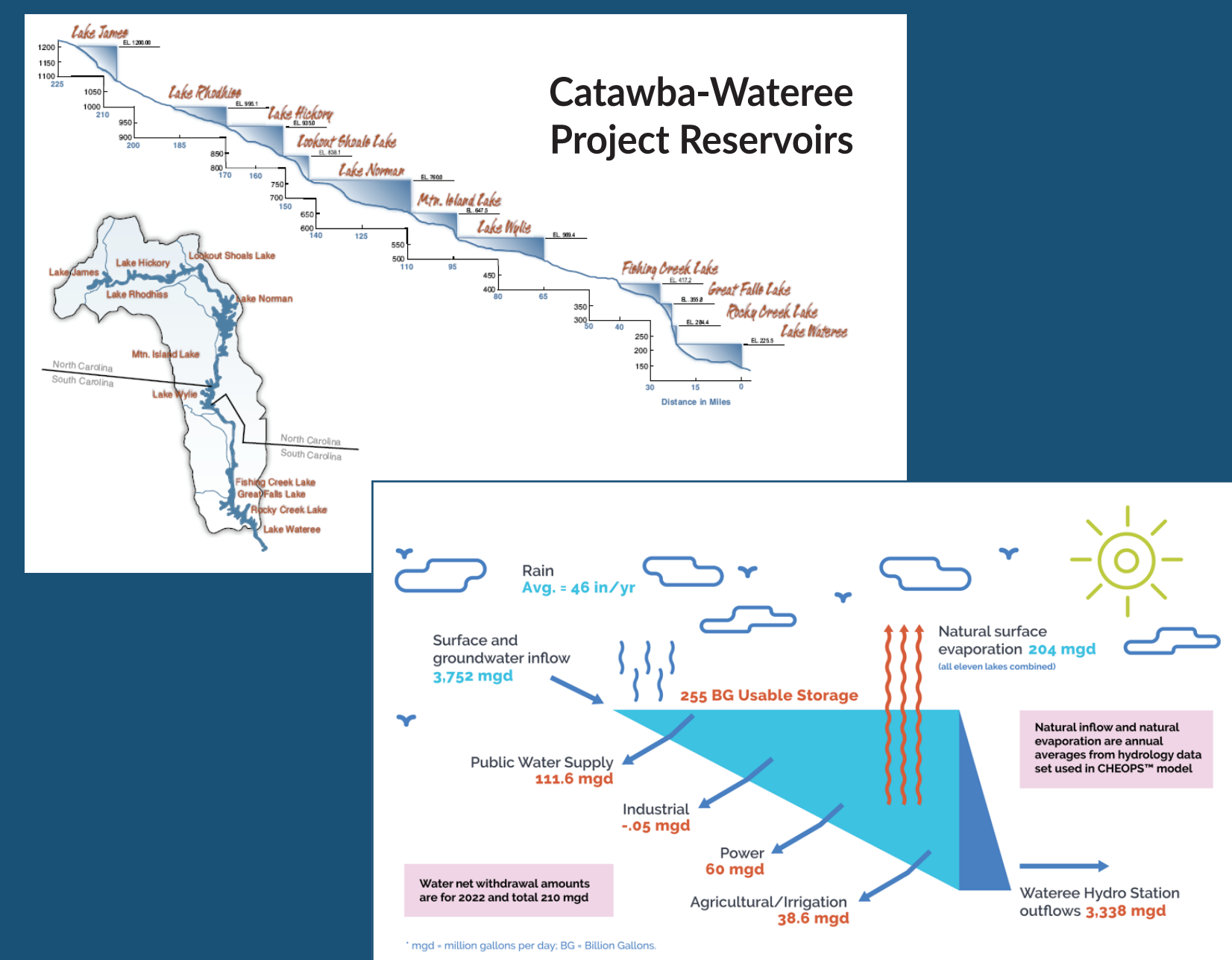


Understanding the Catawba-Wateree Basin



The Catawba-Wateree Basin is a vital water resource for approximately 2.2 million people in North and South Carolina. It extends 376 river miles, reaching the confluence of the Wateree and Congaree rivers, providing a crucial link between communities.

This basin includes 11 interconnected reservoirs that help maintain water levels and support diverse needs, from drinking water to recreation. The region's 12 hydropower stations, along with nuclear and fossil power plants, play a significant role in generating energy for the area.



Current Catawbas IBTs - Draft Values

Direction	Community	Withdrawal Basin	Transfer Basin	IBT Type	Max Month limit (mgd)	Max Day limit (mgd)
Out of Catawba Basin	Statesville, NC	3-1	18-2	NC Grandfathered		15
	Charlotte Water, NC	3-1	18-4	NC Certificate		33
	Mooresville, NC	3-1	18-2	NC Grandfathered		9.5
	Concord / Kannapolis / Cabarrus County, NC	3-1	18-4	NC Certificate		10
	Union County / Lancaster County, NC/SC	3-1	18-1	SC Permit / NC Grandfathered	20	
	Union County, NC	3-1	18-4	NC Grandfathered		5
Sub-basin Transfer	Chester, SC	3-1	1-1	SC Permit		9.2
	Hickory, NC	3-1	3-2	NC Grandfathered		19.1
Into Catawba Basin	Gastonia, NC	3-1	3-2	NC Grandfathered		20
	Winnsboro, SC	1-1	3-1	SC Permit	3.3	
	York, SC	1-1	3-1	SC Permit	0.6	

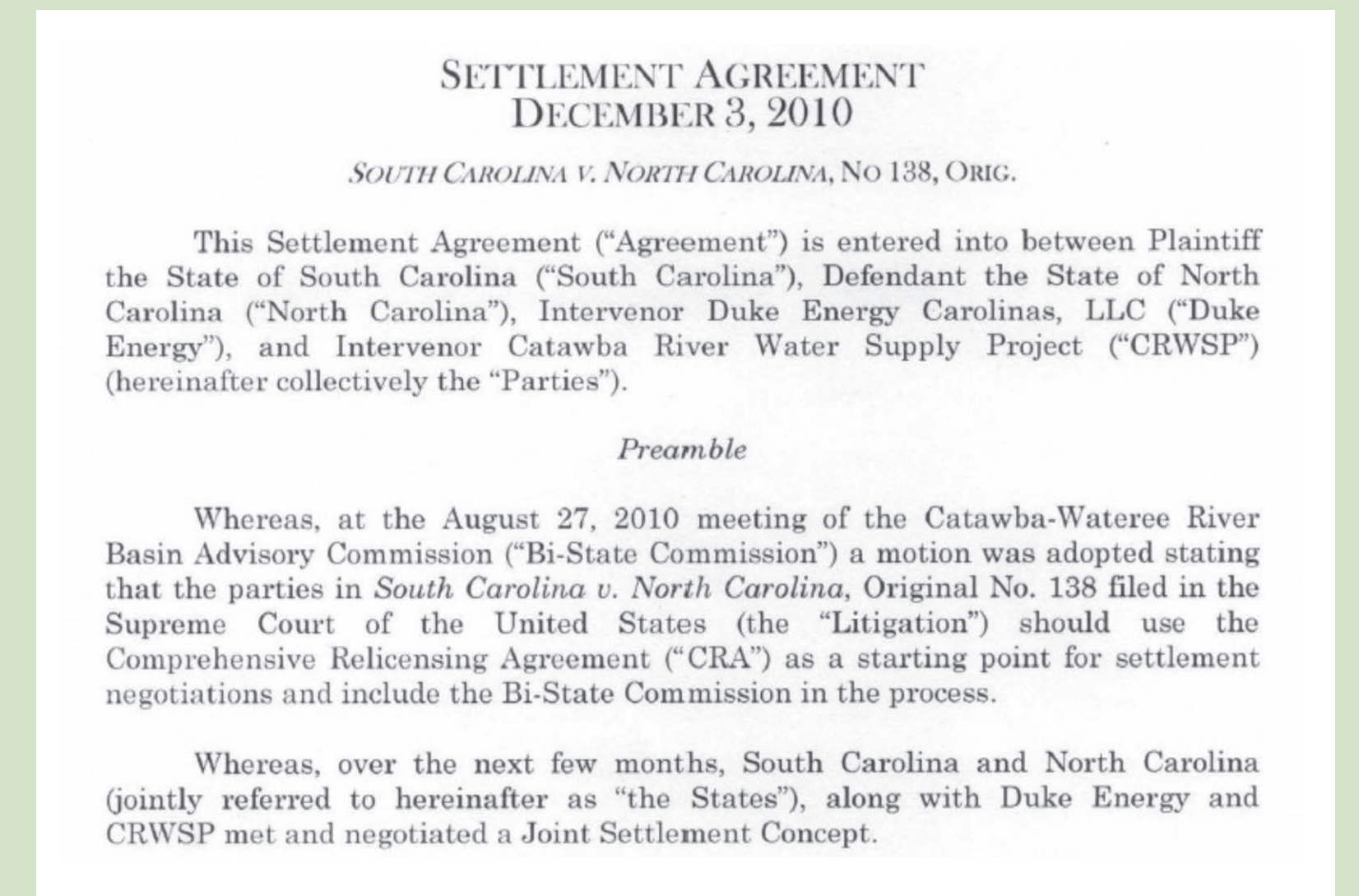
2014 Catawba-Wateree Water Supply Plan

In compliance with the NC-SC Settlement Agreement, a water supply master plan was completed in 2014, ensuring a sustainable water future. Updates are required every 10 years and are currently ongoing as part of the Integrated Water Resources Plan.

Developed with input from a 19-member stakeholder team—representing environmental groups, lake users, local governments and state agencies—the plan included updated water use projections through 2065. It explored various strategies to extend the region's water supply and introduced long-term, basin-wide approaches to secure sustainable resources for future generations.

NC - SC Settlement Agreement Settlement Terms:

1. Regulate IBTs, encourage conservation
2. Water Supply Study every 10 years
3. Coordinate consistent system for IBT approval
 - Public notice throughout basin
 - Environmental Impact Statement for major basin transfers
 - Findings of fact on necessity and reasonableness for IBT
4. Require implementation of Low Inflow Protocol (LIP) measures during drought
5. Develop an MOA to coordinate approvals for bi-state water providers
6. Dismiss case and everybody bear their own costs
7. No action for equitable apportionment if abiding by terms of the Comprehensive Relicensing Agreement (CRA)



Integrated Water Resources Plan: Five-Year Schedule

- 01: January-December 2021 Basis of Planning
- 02: January-December 2022 Model Updates & Communications
- 03: January-December 2023 Evaluations & Recommendations
- 04: January-December 2024 Final Recommendations
- 05: January-December 2025 IWRP Production and Rollout

Timeline

