

# Vision Zero in Mooresville

## OUR STATE OF SAFETY

Vision Zero is a national initiative to end traffic fatalities and serious injuries while increasing safe, healthy, equitable mobility for all.

Mooresville is one of 15 communities in North Carolina with an adopted goal of **zero traffic fatalities and serious injuries**. The next step is to create an Action Plan to get us there.

This brochure provides an overview of current transportation safety conditions in Mooresville, which will inform and guide us as we create the Town's first blueprint for eliminating traffic deaths and serious injuries.

## NC VISION ZERO PRINCIPLES

No loss of life on our roads is acceptable.

All road users deserve **safe streets**.

Injury or death is **not an inevitable price** to pay for mobility.

## WHAT HAVE WE LEARNED?

By analyzing crash data, other transportation data, and demographic data, we've learned some key facts about transportation safety in Mooresville:

- 1 *Most employed people in Mooresville drive to their place of work.*  
**However, nearly 40% of households in Mooresville have access to one or no vehicles.**
- 2 *Crashes occur throughout Mooresville.*  
**However, a greater concentration of crashes occur near major interchanges and intersections and in Downtown Mooresville.**
- 3 *Less than 2% of crashes kill or seriously injure someone involved.*  
**However, fatal and serious injury crashes have been on an upward trend in Mooresville. In 2021, nearly twice as many people were seriously hurt or killed in Mooresville crashes compared to 2018.**
- 4 *Most crashes in Mooresville involve motorists only.*  
**However, vulnerable road users such as bicyclists, pedestrians, and motorcyclists are up to 25 times more likely to be seriously hurt or killed if involved in a crash.**
- 5 *Many crashes occur on the busy NC 150 through Mooresville.*  
**However, when adjusted for traffic volume, other less heavily trafficked corridors stand out as high-injury corridors.**



# State of Safety

The charts, graphs, and statistics on this page provide valuable insight on the **state of safety** in Mooresville. This information will help us understand what is causing fatal and serious injury crashes in Mooresville and help us develop strategies to achieve Vision Zero.

## VEHICLE ACCESS

Source: U.S. Census ACS 5-Year Estimates

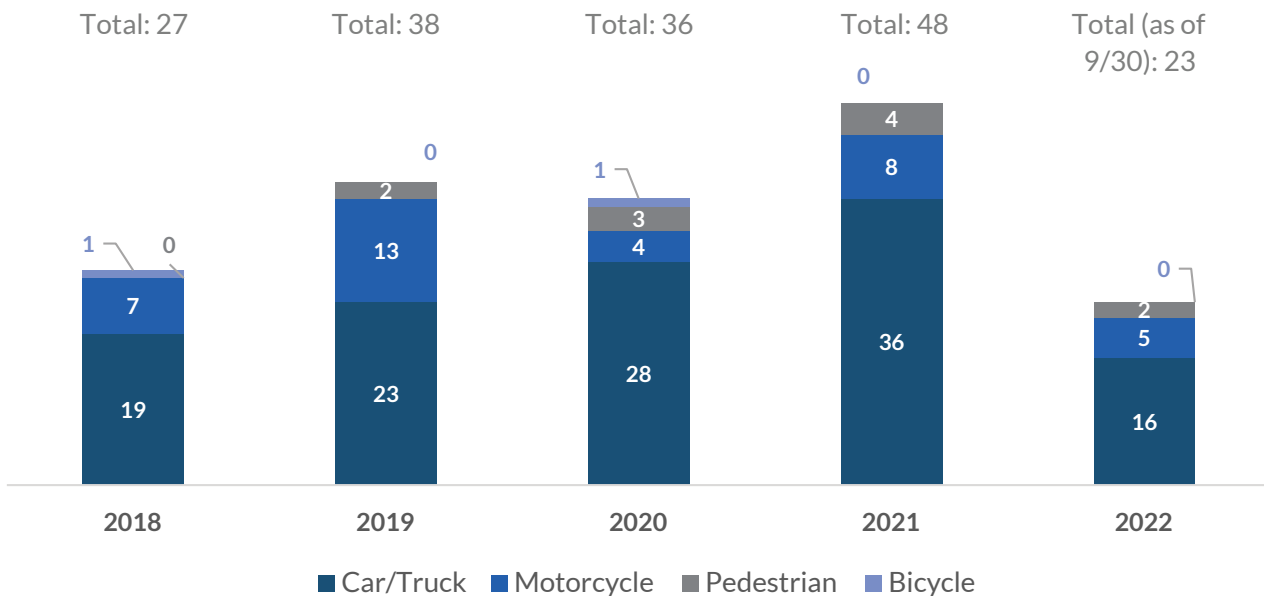


Nearly **40%** of Mooresville households have access to only one vehicle or have no vehicle access.

## FATAL/SERIOUS INJURY CRASHES BY YEAR AND MODE

Source: NCDOT, 2018–2022

The chart below shows the number of crashes in Mooresville since 2018 that have seriously hurt or killed someone. In 2022, 16 crashes involved cars/trucks only, while 5 involved motorcycles and 2 involved pedestrians.



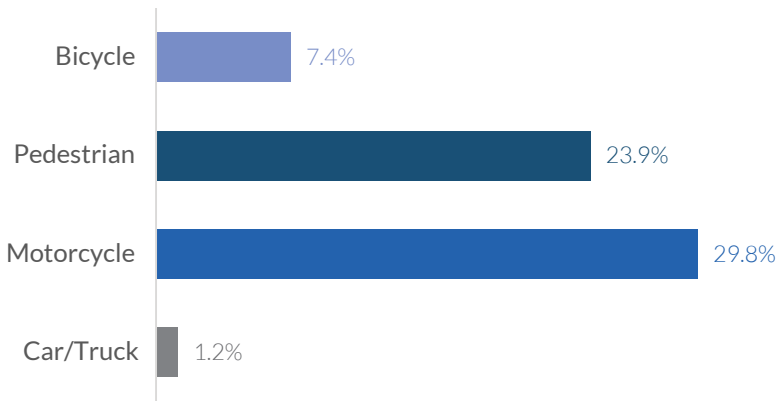
**23**

crashes killed or seriously injured someone on Mooresville roads in 2022.

Annual fatal and serious injuries increased by over 75% between 2018 and 2021.

# LIKELIHOOD OF FATALITY AND SERIOUS INJURY BY MODE

Source: NCDOT, 2017-2022



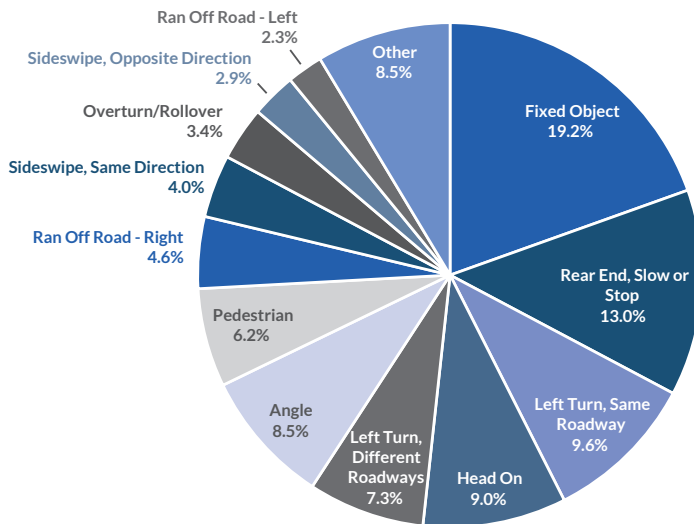
If involved in a crash, a pedestrian or motorcycle is around



as likely to be seriously hurt or killed as someone in a car or truck

# FATAL AND SERIOUS INJURY CRASHES BY TYPE

Source: NCDOT, 2017-2022



The most common

crashes resulting in fatality or serious injury involved fixed objects, rear end collisions, left turn collisions, or head on collisions.

\*Other: includes rear end, turn; sideswipe, opposite direction; right turn, same roadway; right turn, different roadways; parked motor vehicle; ran off road, straight; other collision with vehicle; other non-collision; bicycle

# CRASH FACTORS MOST LIKELY TO RESULT IN FATALITY OR SERIOUS INJURY

Source: NCDOT, 2017-2022

The following factors are the most likely to lead to a crash killing or seriously hurting someone.

- 1. Unbelted Driver/Passenger** 10.6%
- 2. Alcohol** 8.6%
- 3. Drugs** 8.5%
- 4. Drowsy Driver** 6.0%
- 5. Speeding** 5.6%

Percent of crashes with this factor that result in a fatality or serious injury.

Distracted driving also contributes to many of these crashes, but often is not reported.

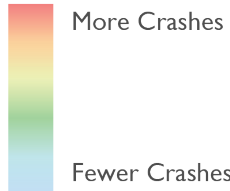


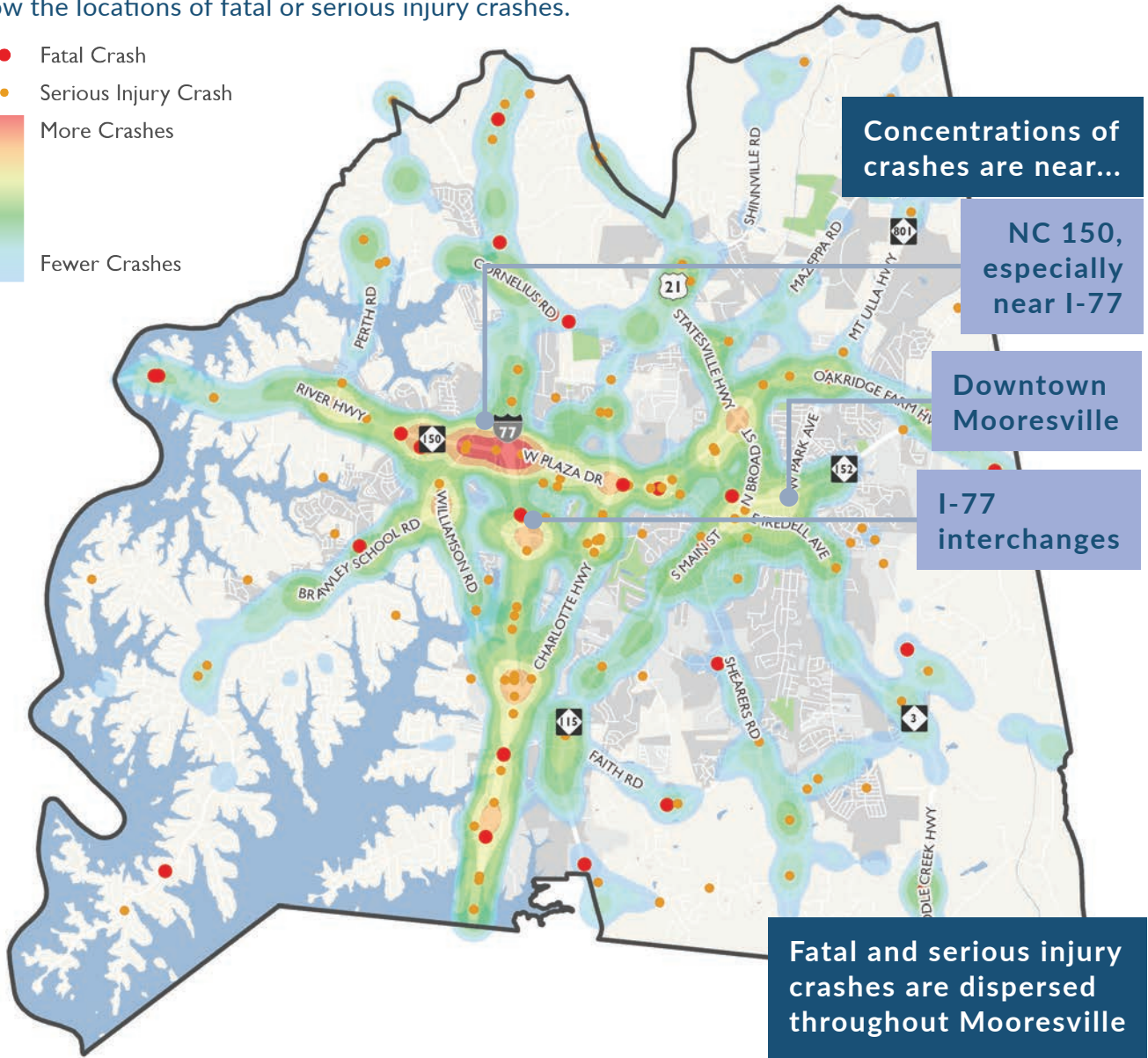
# Crash History

## ALL CRASHES AND FATAL OR SERIOUS INJURY CRASHES

Source: NCDOT, 2017-2022

The map below shows a heatmap of the locations of crashes in Mooresville's vicinity, and the dots show the locations of fatal or serious injury crashes.

- Fatal Crash
  - Serious Injury Crash
- 
- More Crashes
- Fewer Crashes



As a whole, crashes are concentrated in high-volume areas like River Highway (NC 150) near I-77. However, we notice that fatal and serious injury crashes are more dispersed throughout Mooresville, including on many smaller neighborhood streets and rural roads. The Vision Zero Action Plan will develop a High-Injury Network to analyze where these serious crashes occur most often.

CONTACT US

Camila Weckerly | Transportation Engineer  
cweckerly@mooresvillenc.gov



MOORESVILLE  
VISION ZERO ACTION PLAN