

Mooreville Graded School District Growth Presentation

Dr. Jason Gardner - Superintendent





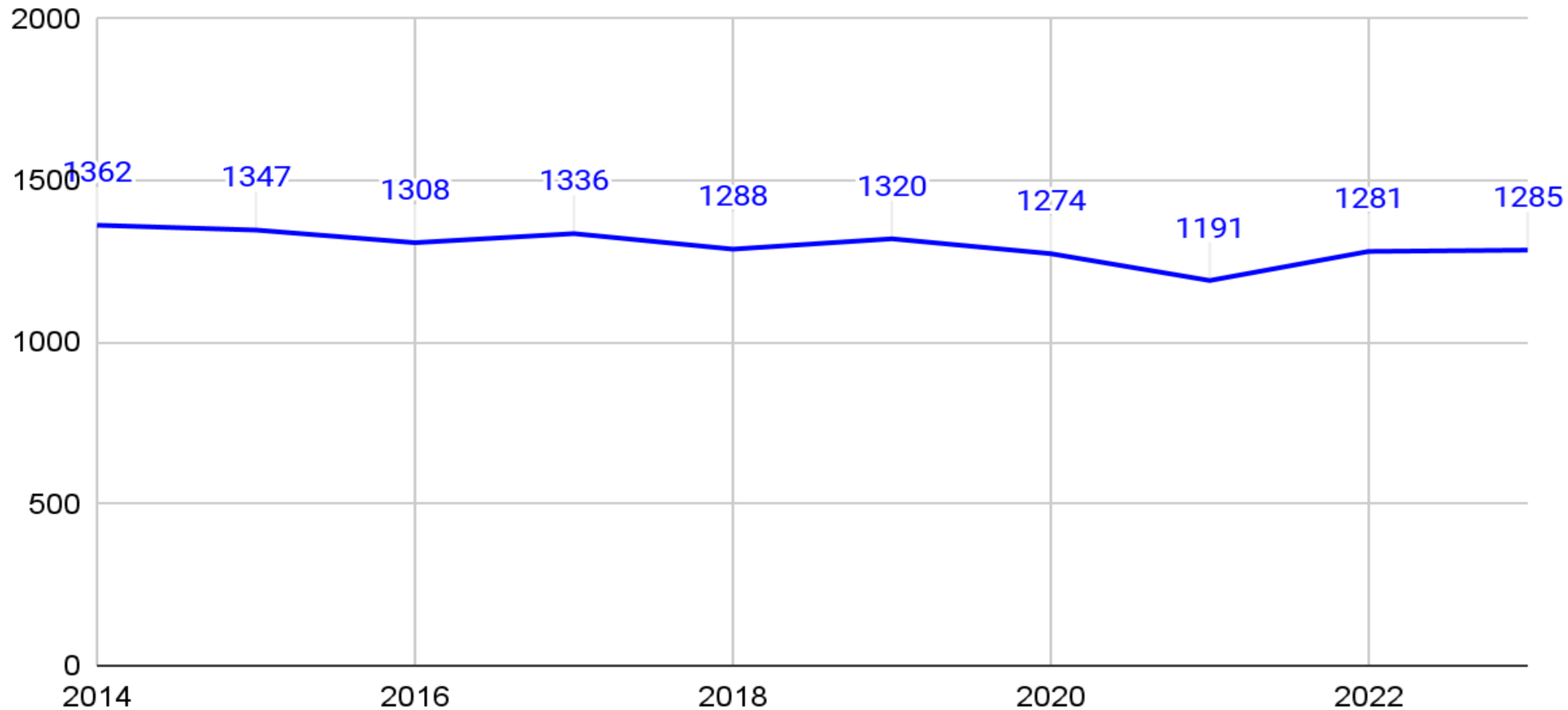
MGSD

Growth Analysis

- Enrollment Trends
- MGSD Boundary
- Building Capacity
- Anticipated Growth

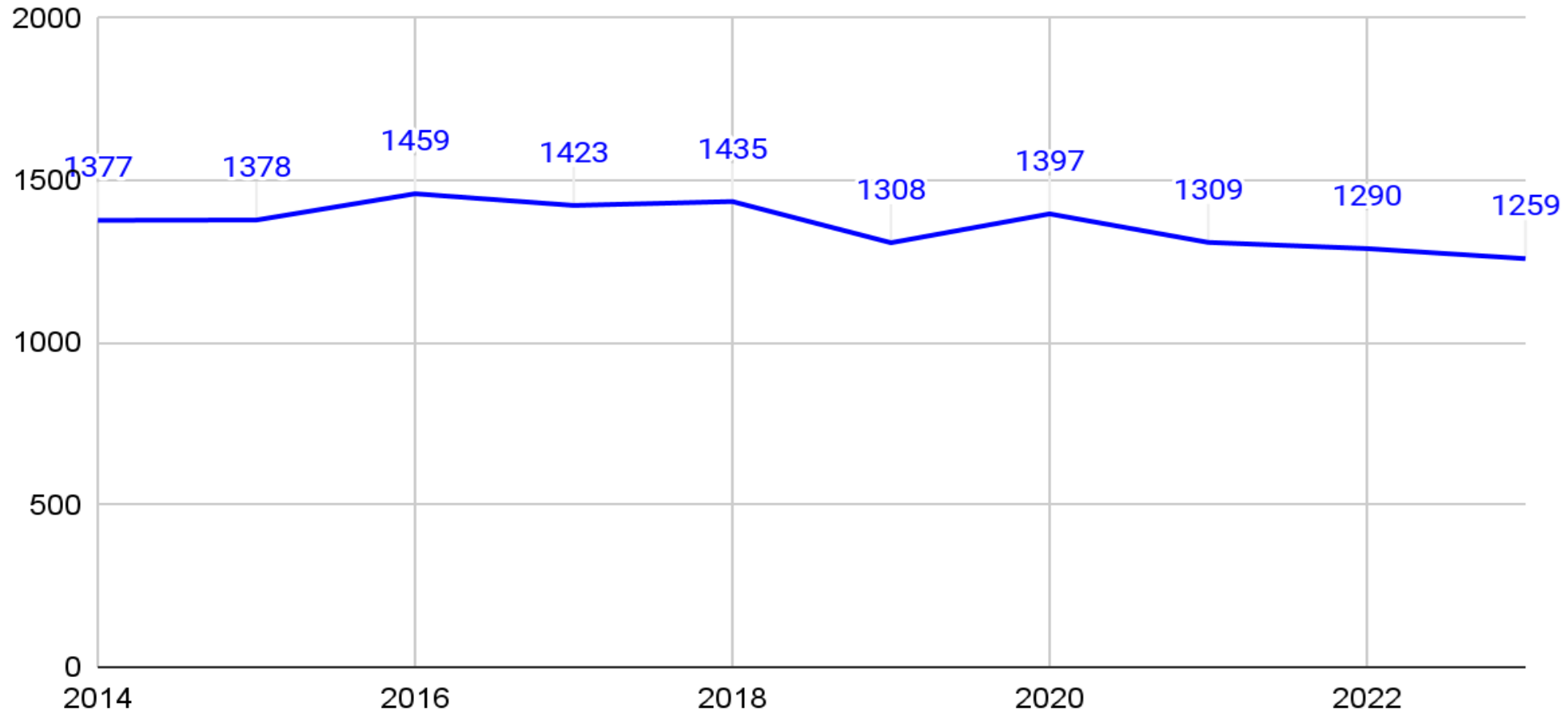
Enrollment Trends

PMR Month 9 Enrollment (K-2)



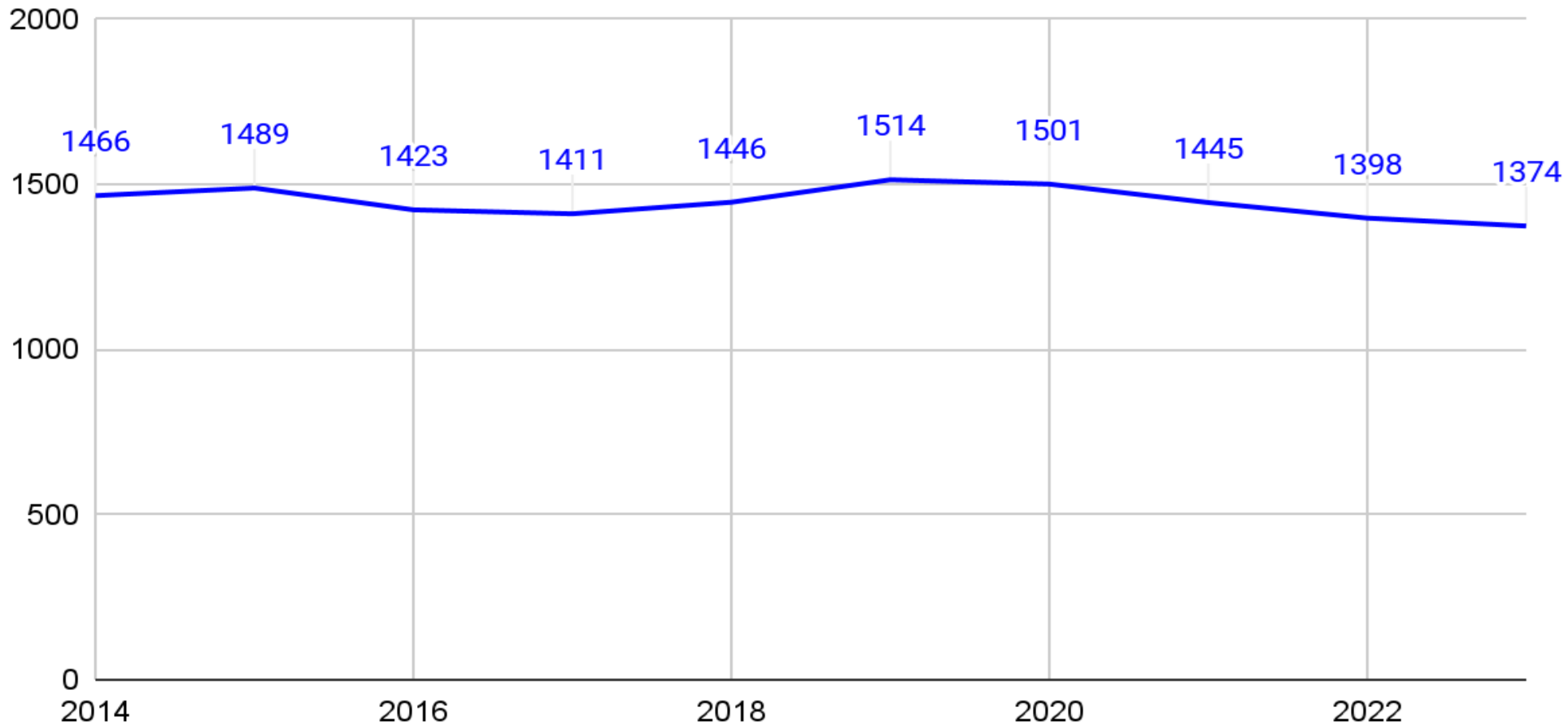
Enrollment Trends

PMR Enrollment Month 9 (3-5)



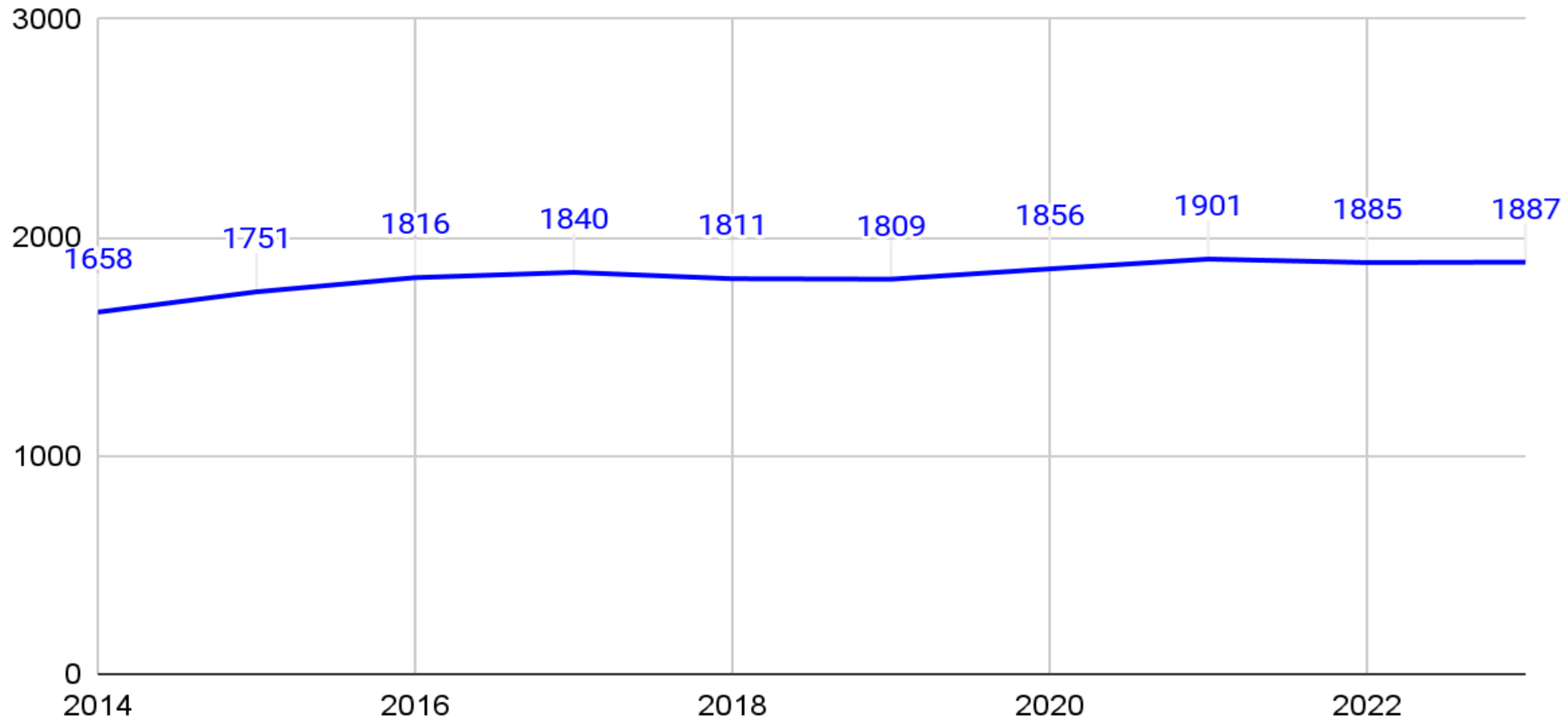
Enrollment Trends

PMR Enrollment Month 9 (6-8)



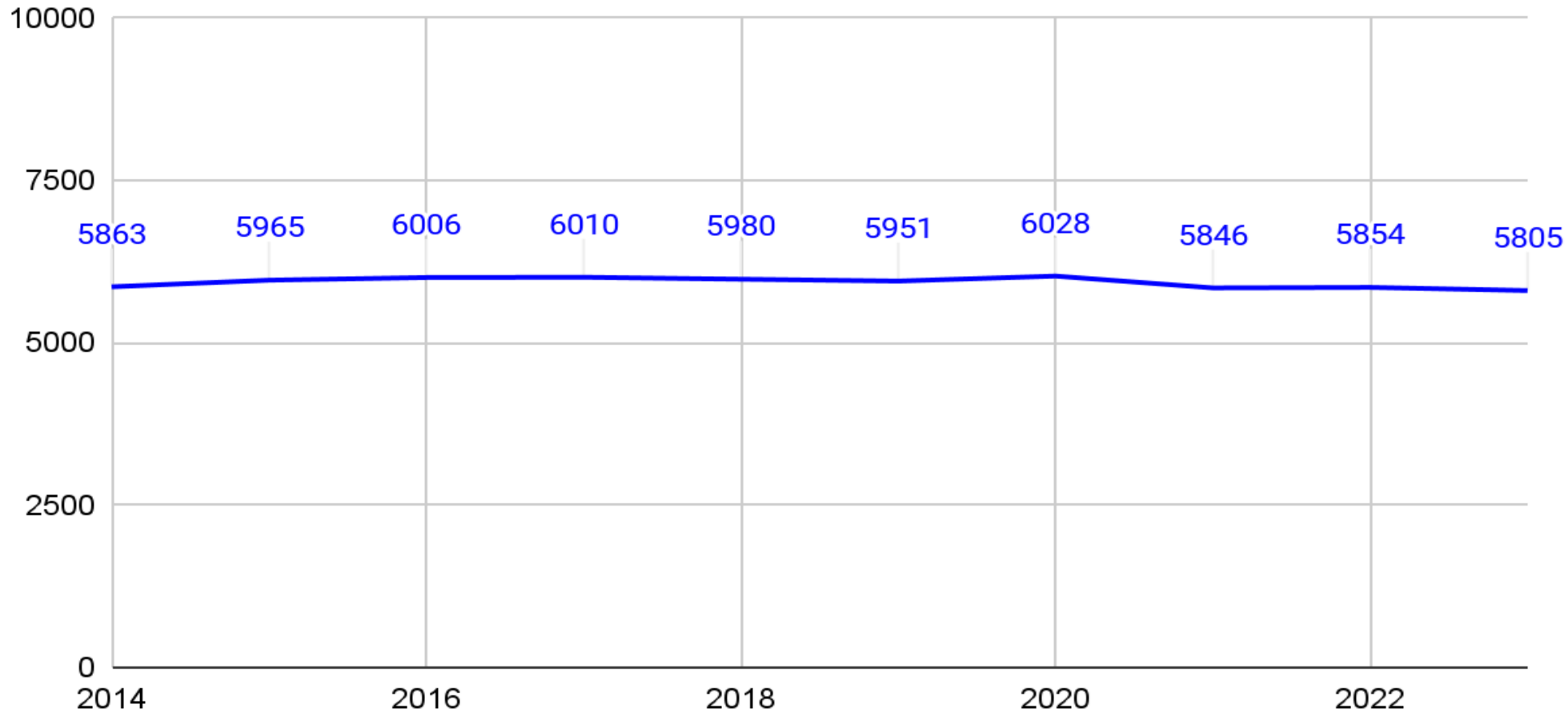
Enrollment Trends

PMR Enrollment Month 9 (9-12)



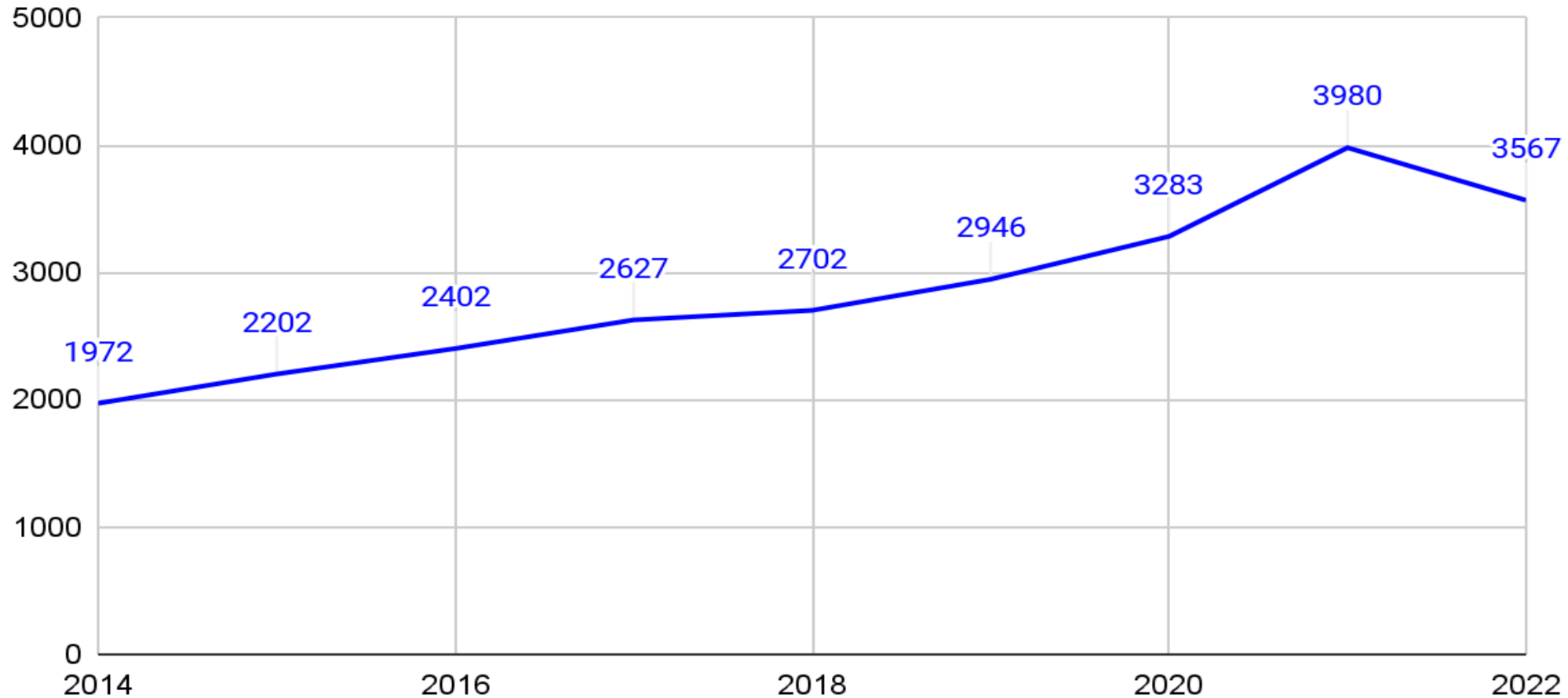
Enrollment Trends

PMR Enrollment Month 9 (K-12)



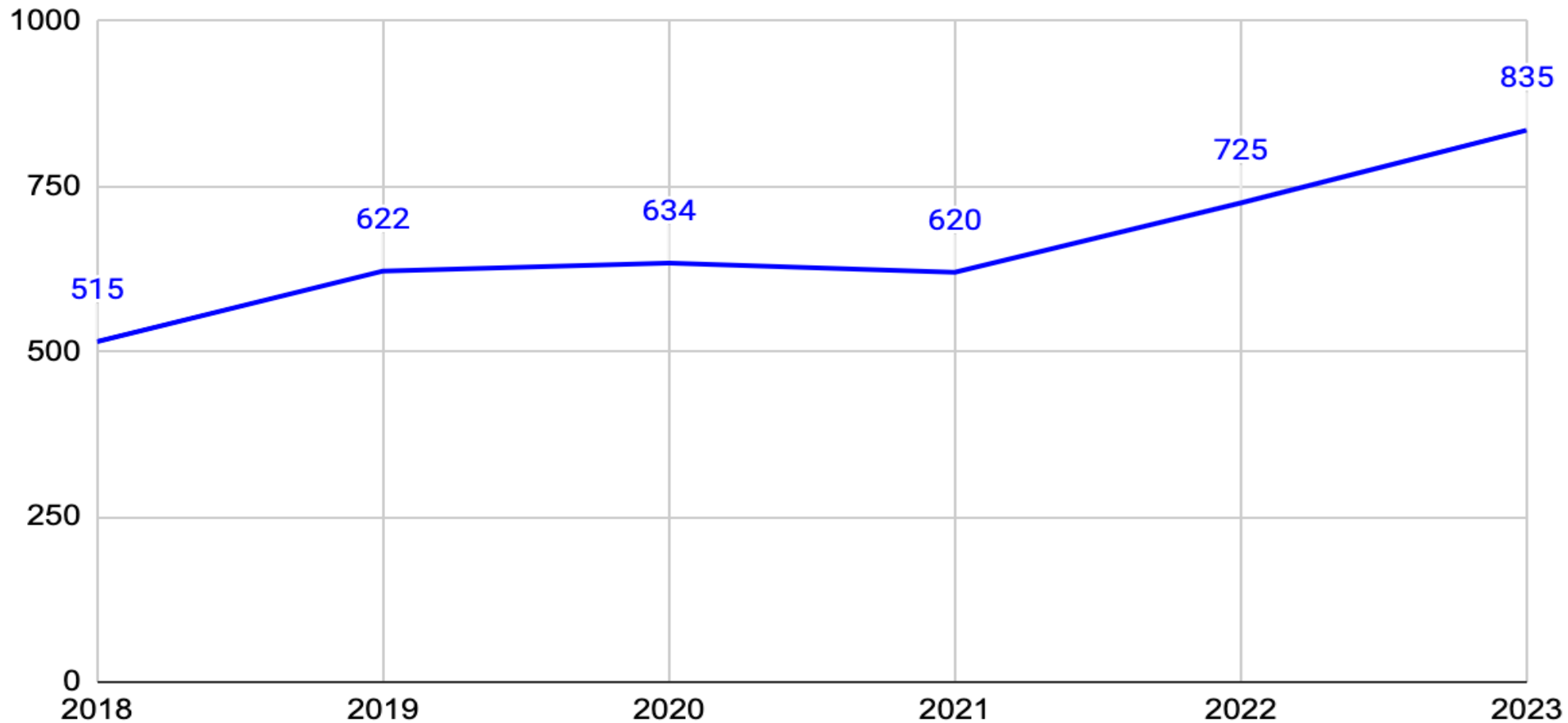
Enrollment Trends

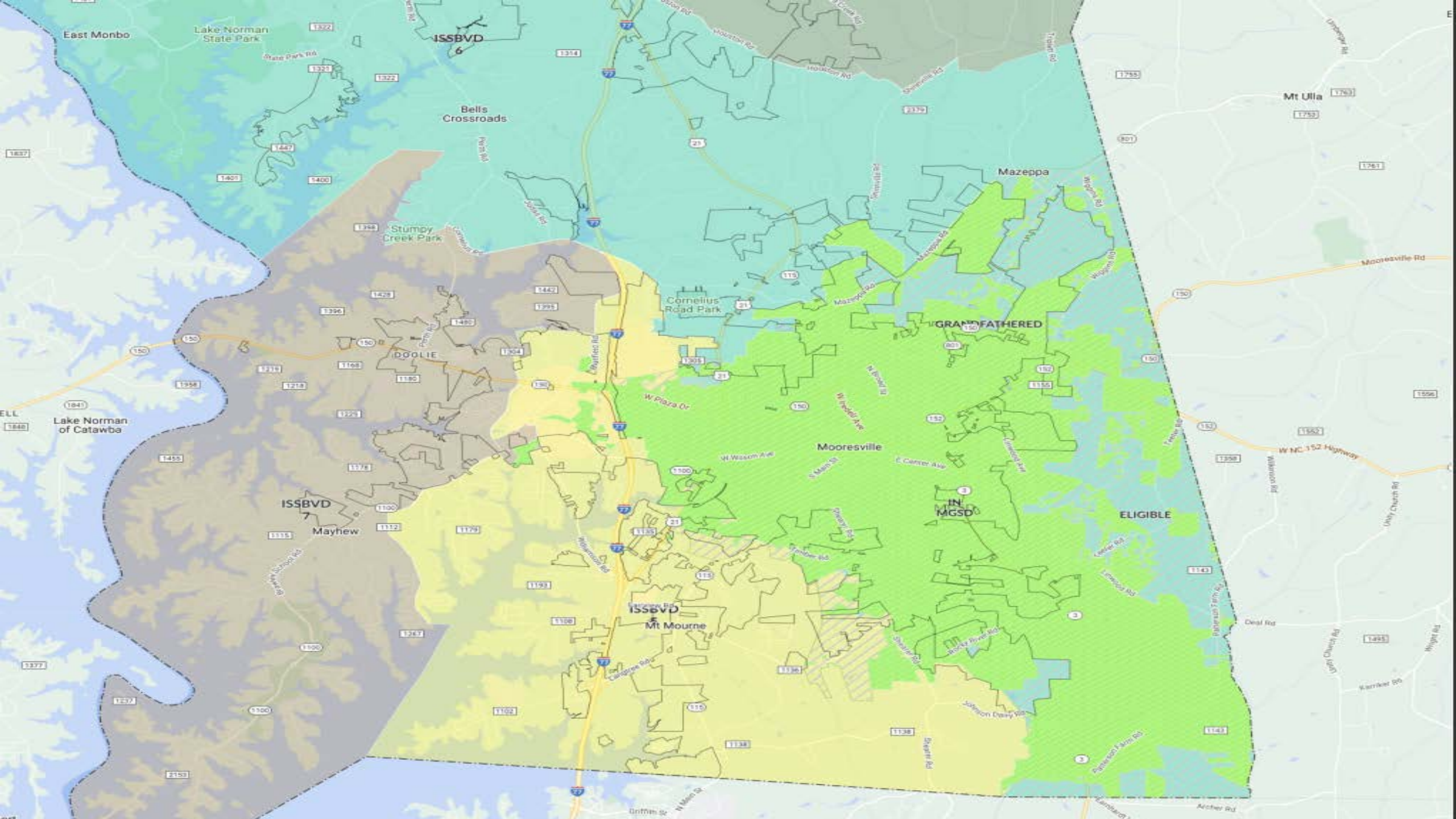
Home School (Iredell County Residents)



Enrollment Trends

Charter School





Building Capacity Data



Scenario:
MGSD 09 - 20220919

	Month-2																K-12			
	Grades	ADM	Capacity	PreK	KI	1	2	3	4	5	6	7	8	9	10	11	12	min %	PreK-12	Utilization
Park View ES	K-2	552	714	0	165	163	148											41%	477	67%
Rocky River ES	K-2	545	714	43	135	108	139											31%	425	60%
South ES	K-2	482	612	70	137	119	127											46%	453	74%
		1579	2040	113	437	391	414												1355	66%
East Mooreville IS	3-5	601	796					195	201	219								44%	615	77%
Mooreville IS	3-5	638	1047					208	215	230								35%	653	62%
		1239	1843					403	416	449									1268	69%
Mooreville MS	6-8	942	1225								223	255	253					35%	731	60%
Selma Burke MS	6-8		900								215	222	212					44%	649	72%
		942	2125								438	477	465						1380	65%
Mooreville HS	9-12	2005	2400											554	522	466	463	39%	2005	84%
Mooreville Online Academy	9-12																			
Totals		5765	8408	113	437	391	414	403	416	449	438	477	465	554	522	466	463		6008	

Other Factors to Consider

- Most of the anticipated growth within our boundary area is in the SE corner
- Grades 9-12 are the primary concern presently in regards to capacity
- Some of our current schools do have the ability for expansion
- Mooresville Graded School District does not presently allow out of district transfers
- Charter and homeschool enrollment can fluctuate and be unpredictable





QUESTIONS?

