



DESIGN PUBLIC MEETING MAP



TIP NO. U-6249
IREDELL COUNTY
SR 1102 (LANGTREE RD.) INTERSECTION.
CONSTRUCT INTERSECTION IMPROVEMENTS.

May 2023



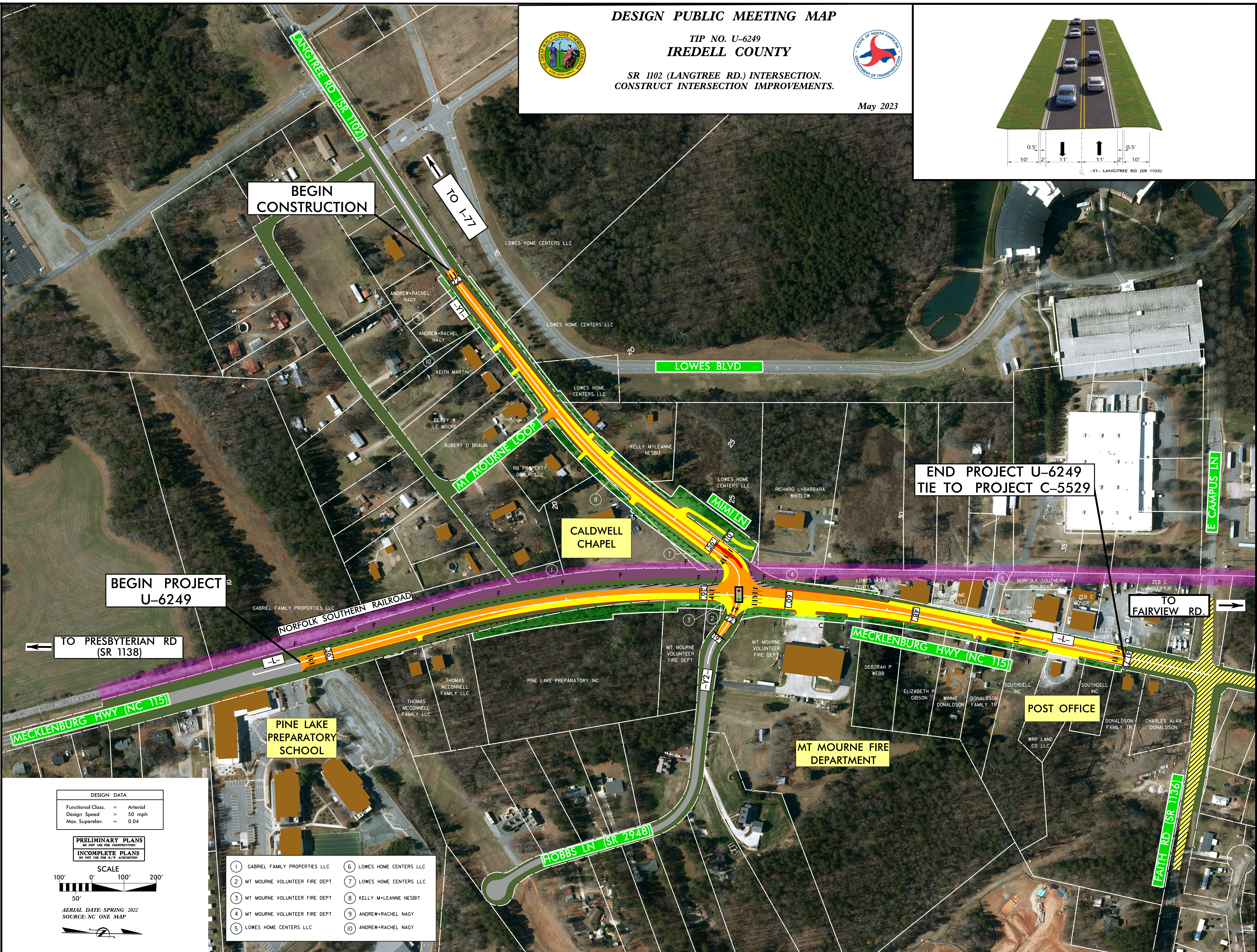
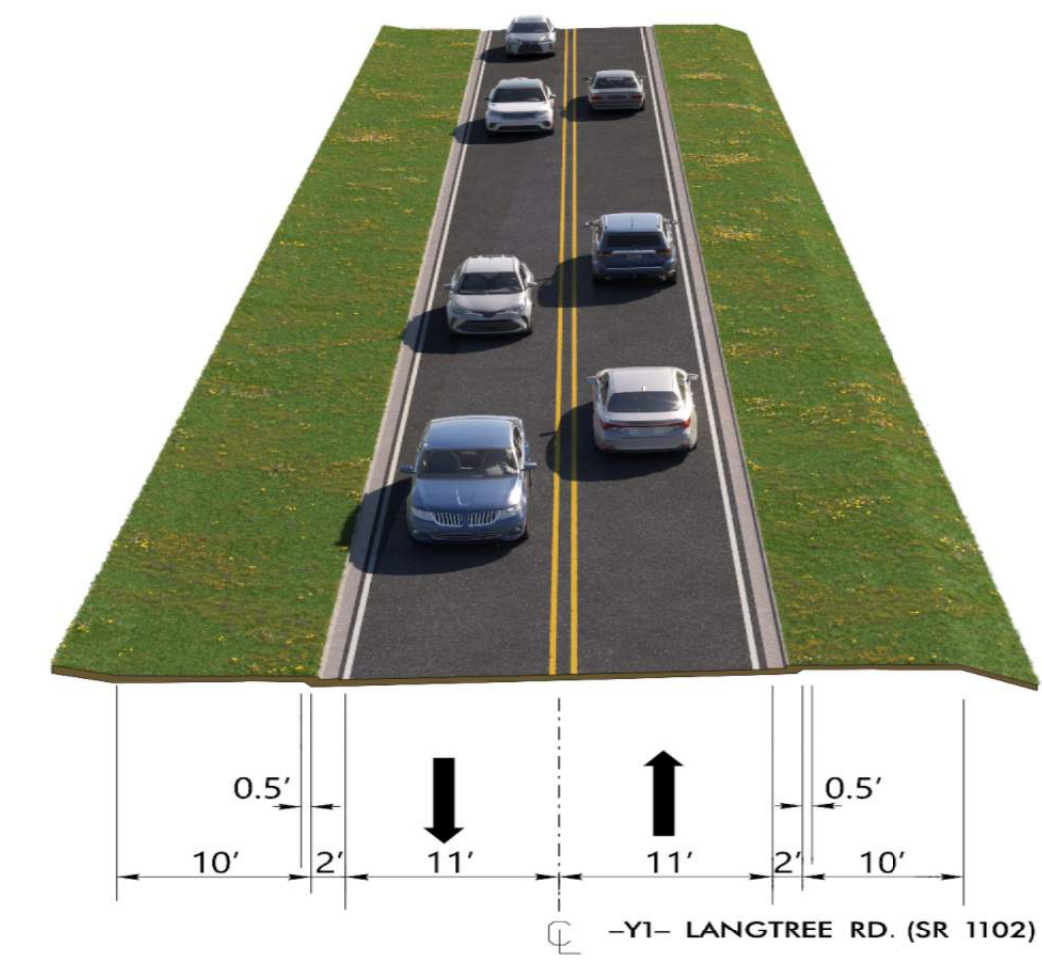
DESIGN PUBLIC MEETING MAP

TIP NO. U-6249
IREDELL COUNTY

SR 1102 (LANGTREE RD.) INTERSECTION.
CONSTRUCT INTERSECTION IMPROVEMENTS.

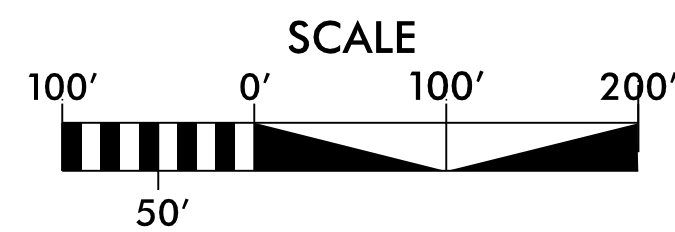


May 2023



DESIGN DATA	
Functional Class.	= Arterial
Design Speed	= 50 mph
Max. Superelev.	= 0.04

PRELIMINARY PLANS
DO NOT USE FOR CONSTRUCTION
INCOMPLETE PLANS
DO NOT USE FOR FINAL ACQUISITION



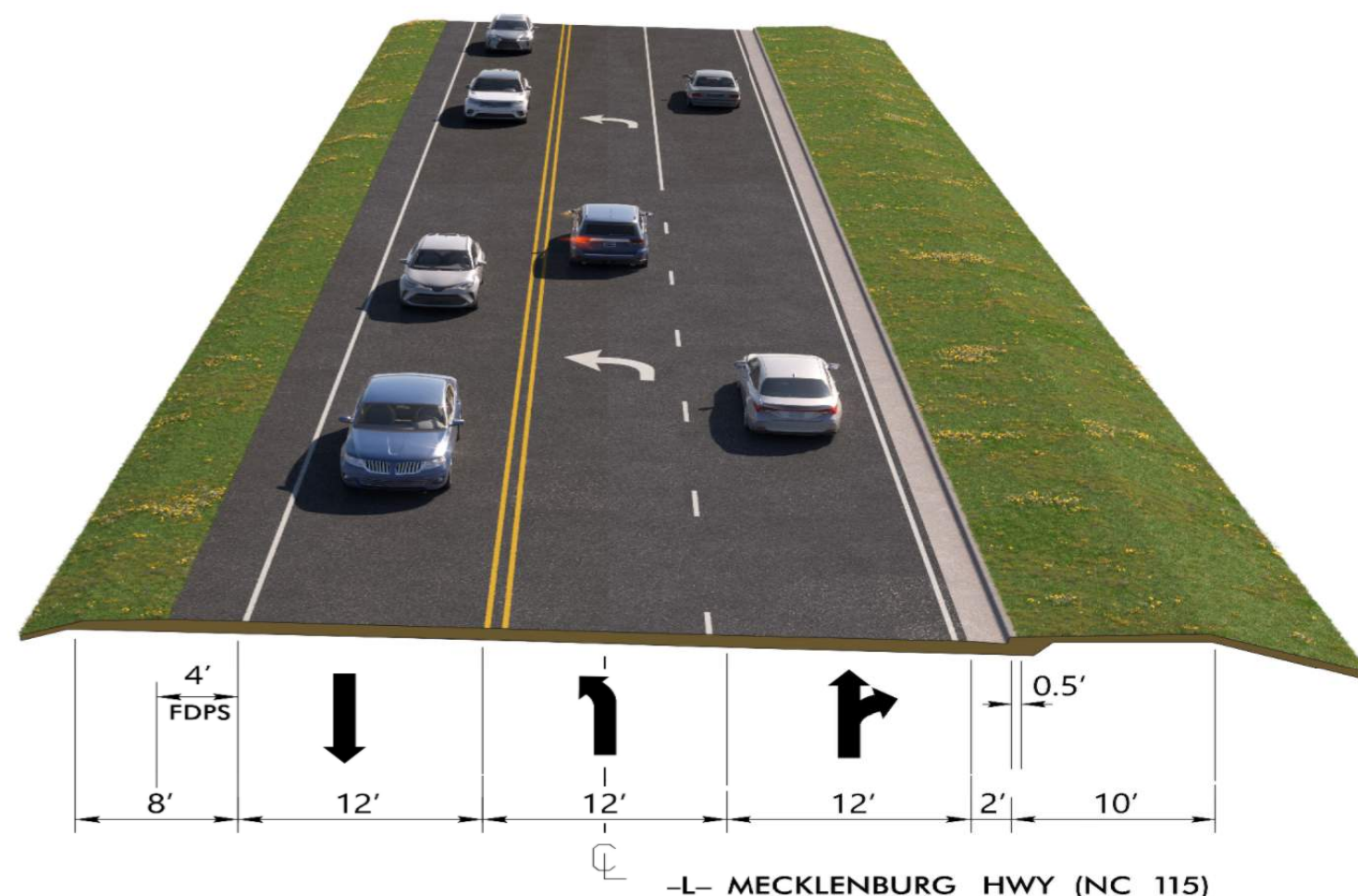
AERIAL DATE: SPRING 2022
SOURCE: NC ONE MAP



LEGEND

- BUILDINGS
- EXISTING RIGHT OF WAY
- PROPOSED RIGHT OF WAY
- EXISTING ROADWAY
- EXISTING ROADWAY TO BE REMOVED
- EXISTING ROADWAY TO BE RESURFACED
- PROPOSED ROADWAY
- FUTURE ROADWAY
- PROPOSED STRUCTURES, ISLAND, CURB AND GUTTER
- RAILROAD RIGHT OF WAY
- PROPERTY LINES
- PRESENT ADT
- FUTURE ADT
- EXISTING TRAFFIC SIGNAL

- | | |
|---------------------------------|--------------------------|
| 1 GABRIEL FAMILY PROPERTIES LLC | 6 LOWES HOME CENTERS LLC |
| 2 MT MOURNE VOLUNTEER FIRE DEPT | 7 LOWES HOME CENTERS LLC |
| 3 MT MOURNE VOLUNTEER FIRE DEPT | 8 KELLY M-LEANNE NESBIT |
| 4 MT MOURNE VOLUNTEER FIRE DEPT | 9 ANDREW+RACHEL NAGY |
| 5 LOWES HOME CENTERS LLC | 10 ANDREW+RACHEL NAGY |



NOTE:
NO CONTROL OF ACCESS - CONNECTIONS TO A FACILITY PROVIDED VIA RAMPS AT INTERCHANGES, AT-GRADE INTERSECTIONS, AND PRIVATE DRIVEWAYS, NO PHYSICAL RESTRICTIONS, I.E., A CONTROL OF ACCESS FENCE MUST NORMALLY PRIVATE DRIVEWAY CONNECTIONS ARE DEFINED AS ONE CONNECTION PER PARCEL. ADDITIONAL CONNECTIONS MAY BE CONSIDERED IF THEY ARE JUSTIFIED AND IF SUCH CONNECTIONS DO NOT NEGATIVELY IMPACT TRAFFIC OPERATIONS AND PUBLIC SAFETY.

IMPACTS AND DRIVEWAY TIES
LIMITS OF CONSTRUCTION AND THEIR IMPACTS SHOWN ON THIS HEARING MAP ARE BASED OFF OF PRELIMINARY DESIGNS AND PRELIMINARY GROUND SURVEYS DURING THE FINAL DESIGN STAGE. DESIGNERS WILL ATTEMPT TO MINIMIZE IMPACTS WHERE FEASIBLE. USING FINAL GROUND SURVEYS, DRIVEWAY LOCATIONS WILL ALSO BE DETERMINED DURING FINAL DESIGN USING FINAL SURVEYS.

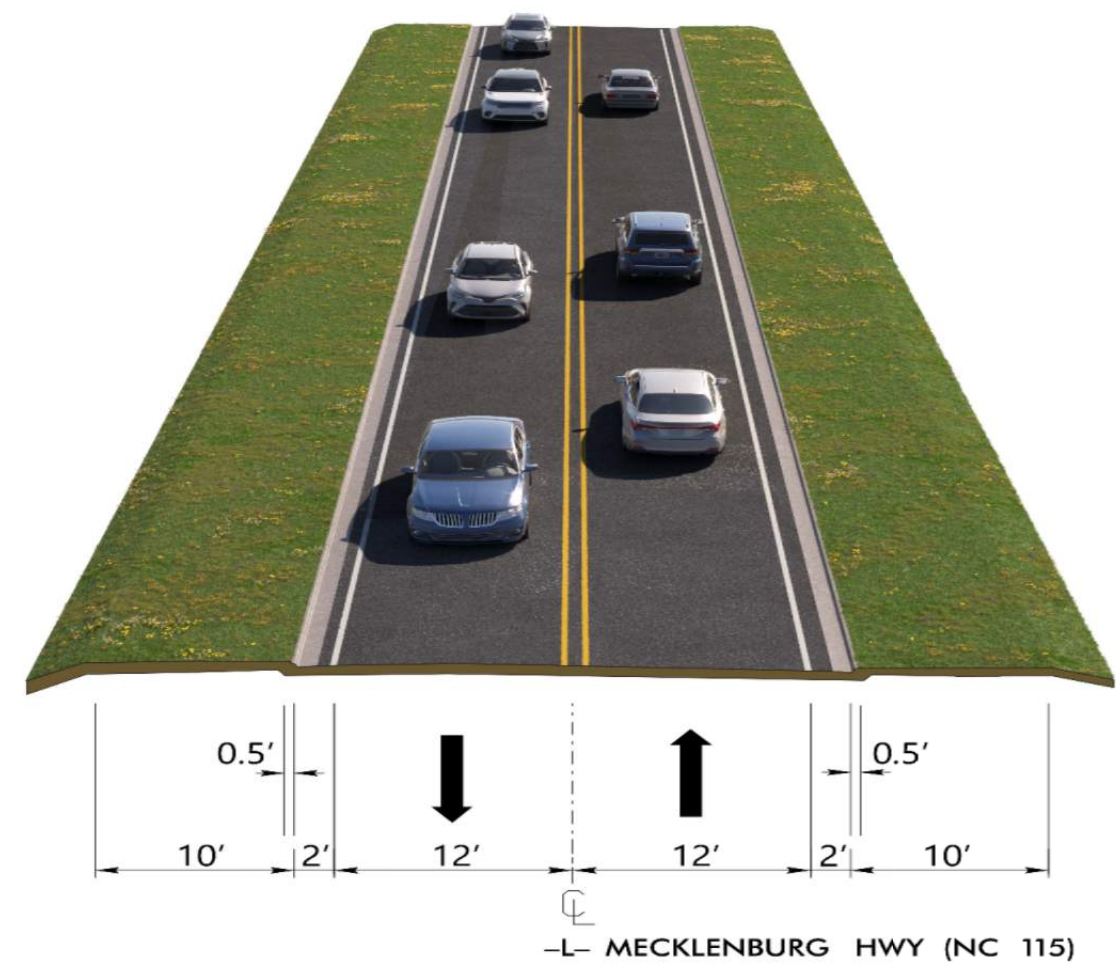
UTILITY INFORMATION
TO PROVIDE GREATER VISUAL CLARITY, EXISTING AND PROPOSED UTILITIES ARE NOT SHOWN ON THESE MAPS OR ON OTHER DISPLAYS. THE UTILITY INFORMATION SHOWN ON THESE MAPS IS LIMITED TO LOCATION OF MAJOR EXISTING AND POTENTIAL UTILITY EASEMENTS. THE DESIGNS SHOWN ON THESE MAPS, INCLUDING UTILITY EASEMENTS, ARE PRELIMINARY AND ARE SUBJECT TO CHANGE.

THIS PROJECT IS WITHIN THE MUNICIPAL BOUNDARIES OF THE TOWN OF MOORESVILLE.

BETTERMENTS ARE CONTINGENT ON MUNICIPAL AGREEMENTS. BETTERMENTS CAN INCLUDE BUT ARE NOT LIMITED TO SIDEWALK, SIDEWALK SIGNAL POLE MATERIAL, AND OPTIONAL ROAD IMPROVEMENTS.

PEAK HOUR TRAFFIC VOLUME

LANGTREE RD.		573 1,104	
726 952	346 462	274 665	782 1,279
NC 115		4 7	NC 115
HOBBS LN.		26 38	2023 2041



DESIGN PUBLIC MEETING MAP
TIP NO. U-6249
IREDELL COUNTY
SR 1102 (LANGTREE RD.) INTERSECTION.
CONSTRUCT INTERSECTION IMPROVEMENTS.



May 2023

