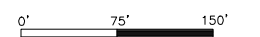


KEY PLAN

FOR REVIEW ONLY
 NOT ISSUED FOR
 CONSTRUCTION

SCALE: 1" = 150'



NO.	DATE	BY	DESCRIPTION

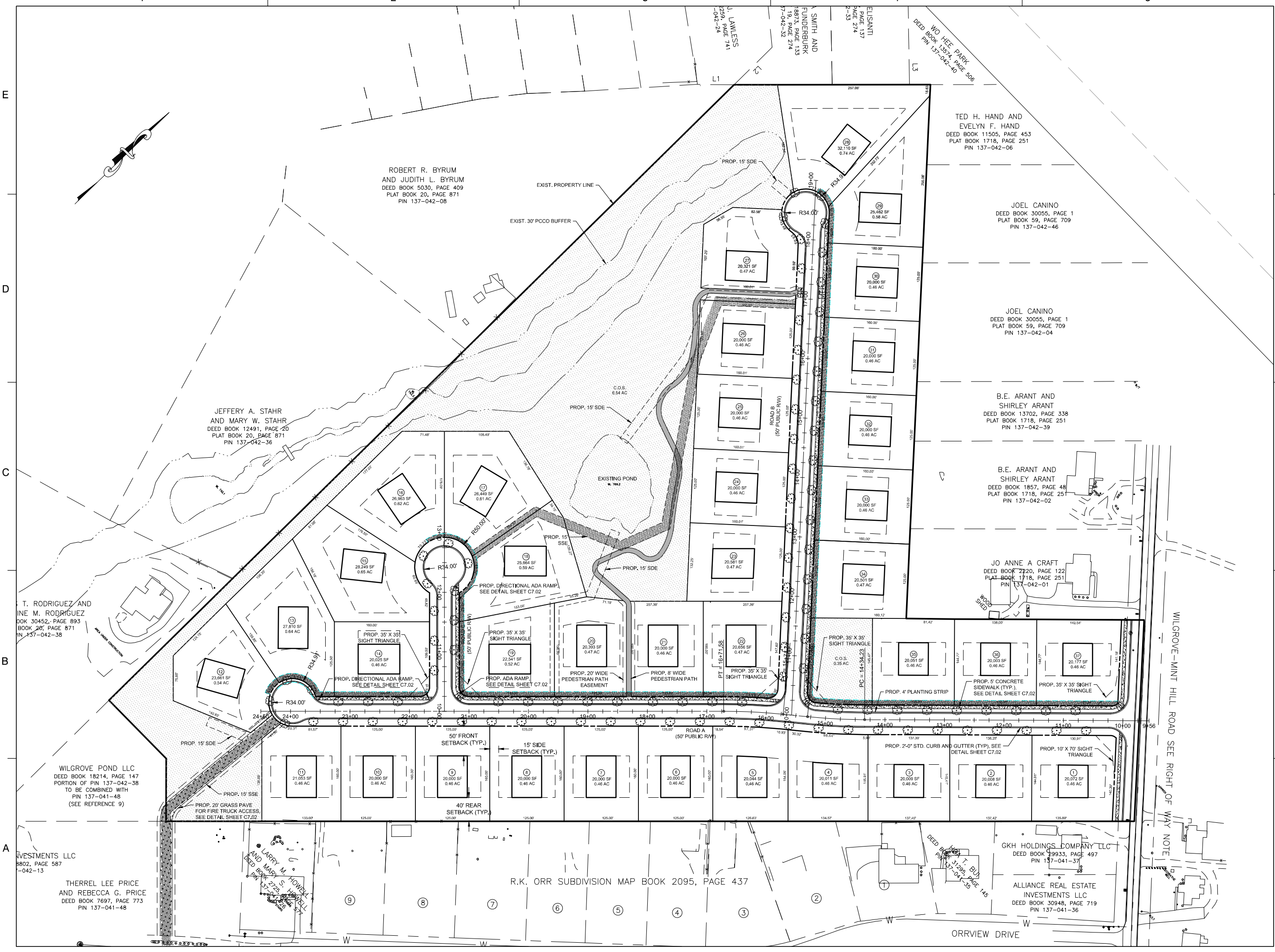
NO.	DATE	BY	DESCRIPTION

SITE PLAN

PROJECT NO. 50094556

SHEET NO.

C3.01



E
D
C
B
A

1

2

3

4

5

R.K. ORR SUBDIVISION MAP BOOK 2095, PAGE 437

ORRVIEW DRIVE

WILGROVE-MINT HILL ROAD SEE RIGHT-OF-WAY NOTE

T. RODRIGUEZ AND
 ANNE M. RODRIGUEZ
 DEED BOOK 30452, PAGE 893
 PLAT BOOK 20, PAGE 871
 PIN 137-042-38

WILGROVE POND LLC
 DEED BOOK 18214, PAGE 147
 PORTION OF PIN 137-042-38
 TO BE COMBINED WITH
 PIN 137-041-48
 (SEE REFERENCE 9)

INVESTMENTS LLC
 DEED BOOK 8802, PAGE 587
 PIN 137-042-13
 THERREL LEE PRICE
 AND REBECCA G. PRICE
 DEED BOOK 7697, PAGE 773
 PIN 137-041-48

JEFFERY A. STAHR
 AND MARY W. STAHR
 DEED BOOK 12491, PAGE 20
 PLAT BOOK 20, PAGE 871
 PIN 137-042-36

ROBERT R. BYRUM
 AND JUDITH L. BYRUM
 DEED BOOK 5030, PAGE 409
 PLAT BOOK 20, PAGE 871
 PIN 137-042-08

TED H. HAND AND
 EVELYN F. HAND
 DEED BOOK 11505, PAGE 453
 PLAT BOOK 1718, PAGE 251
 PIN 137-042-06

JOEL CANINO
 DEED BOOK 30055, PAGE 1
 PLAT BOOK 59, PAGE 709
 PIN 137-042-46

JOEL CANINO
 DEED BOOK 30055, PAGE 1
 PLAT BOOK 59, PAGE 709
 PIN 137-042-04

B.E. ARANT AND
 SHIRLEY ARANT
 DEED BOOK 13702, PAGE 338
 PLAT BOOK 1718, PAGE 251
 PIN 137-042-39

B.E. ARANT AND
 SHIRLEY ARANT
 DEED BOOK 1857, PAGE 48
 PLAT BOOK 1718, PAGE 251
 PIN 137-042-02

JO ANNE A CRAFT
 DEED BOOK 2220, PAGE 122
 PLAT BOOK 1718, PAGE 251
 PIN 137-042-01

GKH HOLDINGS COMPANY LLC
 DEED BOOK 59933, PAGE 497
 PIN 137-041-37

ALLIANCE REAL ESTATE
 INVESTMENTS LLC
 DEED BOOK 30948, PAGE 719
 PIN 137-041-36