

6C  
A4.01  
SOUTH ELEVATION  
3/16"=1'-0"

**KEYED NOTES - ELEVATION**

1	CLEAR ANODIZED ALUMINUM STOREFRONT SYSTEM WITH 1" INSULATED GLAZING
2	BRICK VENEER - RUNNING BOND (COLOR 1)
3	BRICK VENEER - RUNNING BOND (COLOR 2)
4	BRICK VENEER - RUNNING BOND (COLOR 3)
5	BRICK VENEER - RUNNING BOND (COLOR 4)
6	SOLDIER COURSE (COLOR 2)
7	SOLDIER COURSE (COLOR 3)
8	SOLDIER COURSE (COLOR 4)
9	ROWLOCK COURSE (COLOR 2)
10	ROWLOCK COURSE (COLOR 3)
11	ROWLOCK COURSE (COLOR 4)
12	MASONRY STUCCO HARD COAT FINISH
13	HARD COAT STUCCO CORNICE
14	INSULATED HOLLOW METAL DOOR AND FRAME
15	J-BOX FOR EXTERIOR LIGHTING AT SIGNAGE PROVIDED BY OTHERS. GC TO COORDINATE EXACT LOCATIONS
16	MASONRY CONTROL JOINT
17	ALUMINUM CANOPY WITH INTEGRAL GUTTER
18	PRE-FINISHED METAL DOWNSPOUT, TERMINATING AT EXTERIOR GRADE ON CONCRETE SIDEWALK OR SPLASH BLOCK, COLOR TO MATCH EXTERIOR VENEER
19	ALUMINUM TIE ROD ATTACHMENT W/METAL ESCUTCHEON PLATE AT BRICK VENEER
20	LOUVER PER MECHANICAL, PAINT TO MATCH EXTERIOR VENEER
21	MECHANICAL LOUVER, RE: MECHANICAL, PAINT COLOR TO BE APPROVED BY ARCHITECT.
22	OVERFLOW DOWNSPOUT NOZZLE AT 18" ABOVE FINISHED GRADE, RE: PLUMBING DRAWINGS.
23	METAL ROOF ACCESS LADDER (PAINT COLOR PER ARCHITECT)

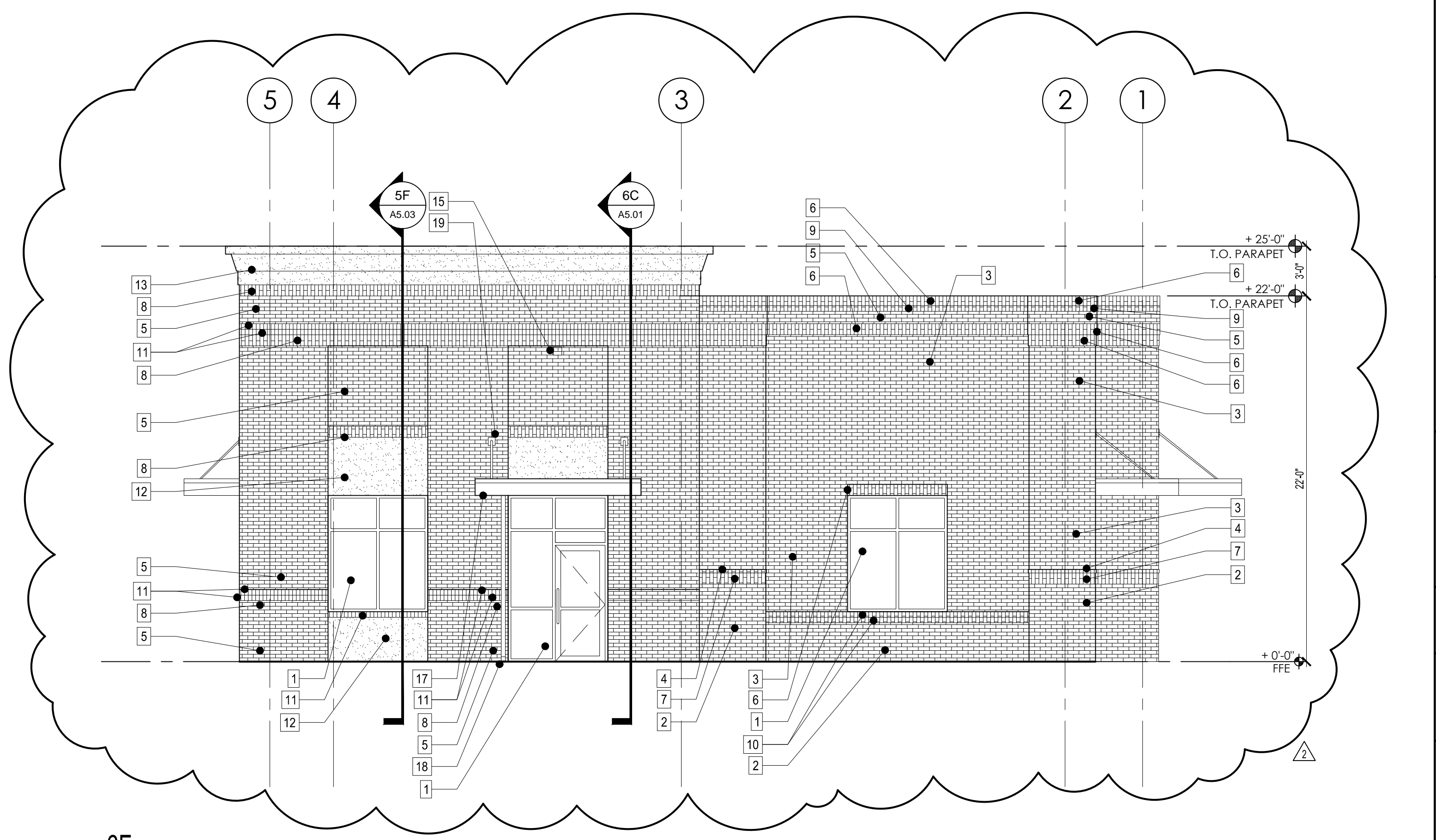
**BRICK VENEER COLORS**

COLOR 1: CHOCOLATE W/C  
STANDARD GRAY MORTAR

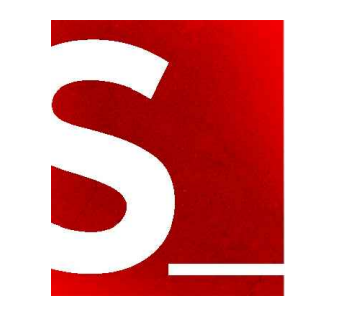
COLOR 2: MEDIUM RED W/C,  
STANDARD GRAY MORTAR

COLOR 3: IVORY STONE,  
STANDARD GRAY MORTAR

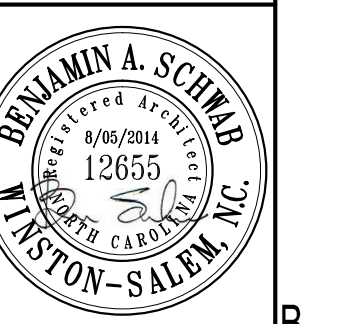
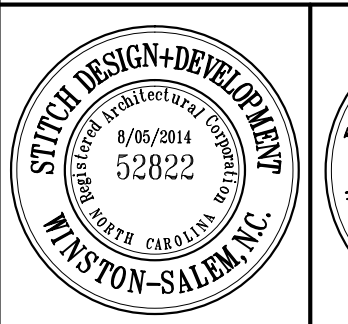
COLOR 4: 75 GREYSTONE,  
STANDARD GRAY MORTAR



6F  
A4.01  
SOUTH ELEVATION  
3/16"=1'-0"



STITCH design + development, PLLC  
801 North Trade Street | Winston-Salem, NC 27101  
p. 336.480.1178 | www.stitchdd.com



7028 BRIGHTON PARK DRIVE  
COMMERCIAL BUILDING

MINT HILL, NC 28227

FOR CONSTRUCTION

revisions

△ Addendum #2	8/05/2014

date: June 20, 2014  
commission: 14-0140  
drawn by:

sheet title:  
EXTERIOR ELEVATIONS

sheet no.:

A4.01