

FRONT ELEVATION

1
A2.1
1/4" = 1'-0"

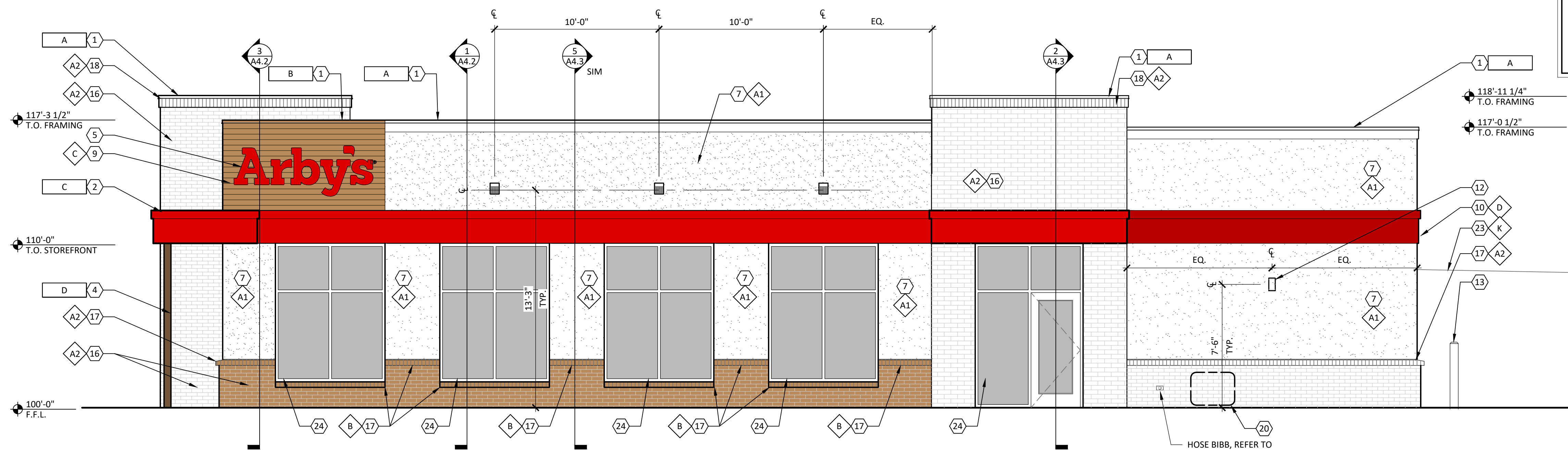
CODED NOTES # (ALL CODED NOTES MAY NOT BE USED)

1. PRE-FINISHED METAL COPING.
2. PRE-FABRICATED METAL CANOPY/ACCENT BAND.
3. HORIZONTAL SIDING.
4. PRE-FABRICATED METAL POST FOR CANOPY.
5. ARBY'S SIGNAGE, MOUNT ON CANOPY/ACCENT BAND. REFER TO SIGNAGE VENDOR DRAWINGS.
6. PAINT DOOR AND FRAME.
7. EIFS WALL SYSTEM.
8. EIFS CORNICE.
9. EIFS WALL SYSTEM WITH 4" O.C. V-GROOVE REVEALS. REFER TO 2/A4.4.
10. EIFS ACCENT BAND.
11. DRIVE THRU WINDOW. PROVIDE STAINLESS STEEL SILL.
12. WALL MOUNTED LIGHT FIXTURE.
13. 6" CONC. FILLED STEEL PEPE BOLLARD, PAINT YELLOW.
14. PAINT GUARD RAIL.
15. PAINT ROOF LADDER.
16. BRICK VENEER, RUNNING BOND.
17. BRICK ROWLOCK SILL.
18. BRICK CORNICE, SOLDIER COURSE.
19. ELECTRICAL EQUIPMENT.
20. GAS METER. REFER TO MEP DRAWINGS FOR EXACT LOCATION. PAINT TO MATCH BRICK.
21. GREASE OUTLET.
22. Co2 HOOKUP.
23. COOLER/FREEZER, PAINT TO MATCH EIFS.
24. ALUMINUM STOREFRONT.
25. PREFABRICATED SCUPPER BOX. MATH COLOR TO ADJACENT WALL COLOR. REFER TO DETAIL 6/A1.2
26. CONTINUE BRICK VENEER BEHIND ELECTRIC EQUIPMENT. COORDINATE SIZE WITH ELECTRICIAN. DO NOT INSTALL ROWLOCK BEHIND ELECTRICAL EQUIPMENT.
27. ARBY'S HAT SIGNAGE MOUNT ON BRICK WALL REFER TO SIGNAGE VENDORS DRAWINGS.

FINISH SCHEDULE

MARK	MANUFACTURER	DESCRIPTION	NOTES
FINISHES			
A1	DRYVIT	EIFS WALL SYSTEM	COLOR: ARBY081030 TEXTURE: STANDARD
A2	BELDEN BRICK	ALASKA WHITE	TEXTURE: VELOUR GROUT: CEMEX GRAY TYPE N 1000
B	BELDEN BRICK	8601 DARK	TEXTURE: SMOOTH GROUT: CEMEX 36-A MOCHA, TYPE N
C	DRYVIT	EIFS WALL SYSTEM WITH V-GROOVE REVEALS	COLOR: ARBY131030 TEXTURE: STANDARD
D	SHERWIN WILLIAMS	SW #6869 STOP	SATIN FINISH
E	NOT USED	---	---
F	NOT USED	---	---
G	SHERWIN WILLIAMS	SW #2808 ROOKWOOD DARK BROWN	SATIN FINISH
H	NOT USED	---	---
J	NOT USED	---	---
K	SHERWIN WILLIAMS	SW #7005 PURE WHITE	SATIN FINISH
METALS			
A	EXCEPTIONAL METALS/ DURO-LAST	TWO-PIECE SNAP-ON METAL COPING REGAL WHITE/ DURO-LAST #SR.70/TE.87	FOR USE WITH DURO-LAST ROOFING SYSTEM DETAIL FA3110
B	EXCEPTIONAL METALS/ DURO-LAST	TWO-PIECE SNAP-ON METAL COPING DARK BRONZE/ DURO-LAST #SR.26/TE.87	FOR USE WITH DURO-LAST ROOFING SYSTEM DETAIL FA3110
C	PRE-FABRICATED CANOPY/BAND	PRODUCT CODE: 9940-30198R PRODUCT NAME: FC SD RAL 3000 FLAME RED	---
D	PRE-FABRICATED POST	PRODUCT CODE: 9840-80957R PRODUCT NAME: FC SD RAL 8017 CHOC. BROWN	---

1. PAINT ALL EXPOSED METERS, SERVICE ENTRANCES, GAS PIPE, ROOF ACCESS LADDER, ETC. TO MATCH ADJACENT EXTERIOR WALL SURFACE.
2. PROVIDE TEMPORARY MASKING OF EXPOSED STAINLESS STEEL DURING ACID WASHING OF MASONRY.
3. PROVIDE SOLID MASONRY UNITS AT THE ENDS OF JAMBS, SILLS, ETC.
4. TO HELP PREVENT EFFLORESCENCE ALL MASONRY UNITS ARE TO BE MANUFACTURED WITH INTEGRAL WATER REPELLANT. WATER REPELLANT ADMIXTURE IS TO BE MIXED IN AND PRE-WASHED SAND IS TO BE USED IN ALL MORTAR MIXES.
5. MAKE SURE THAT WALL WEEPS AND FLASHING ARE INSTALLED CORRECTLY. DO NOT BLOCK WEEPS.
6. REFER TO SHEET A8.2 FOR TEMPERED GLASS LOCATIONS.
7. ALUMINUM STOREFRONT TO BE DARK BRONZE.
8. ALL GLAZING TO BE 1" INSULATED GLAZING.
9. BASIS OF DESIGN FOR THE EIFS WALL SYSTEM IS DRYVIT OUTSULATION PLUS MD. EIFS WALL SYSTEM IS 2" THICK UNLESS NOTED OTHERWISE. INSTALL EIFS PRODUCT IN STRICT ACCORDANCE WITH MANUFACTURER'S SPECIFICATIONS AND DETAILS.
10. SIGNAGE IS SHOWN FOR REFERENCE ONLY. FINAL SIZE, LOCATION AND QUANTITY TO BE DETERMINED BY SIGNAGE VENDOR. SIGNAGE VENDOR SHALL PERMIT ALL SIGNS UNDER SEPARATE COVER.
11. REFER TO ELECTRICAL DRAWINGS FOR EXTERIOR LIGHTING SPECIFICATIONS.
12. PAINT ALL EXPOSED BRICK LINTELS TO MATCH STOREFRONT.
13. ALL WALL MOUNTED LIGHT FIXTURES TO BE SET IN CONTINUOUS BEAD OF CAULK AND THEN SHALL BE SEALED TO WALL WITH SEPARATE BEAD OF CAULK. CAULK TO MATCH ADJACENT SURFACE.
14. PAINT EIFS WALL BEHIND ACCENT BAND RED. EXPOSED EIFS EDGE BELOW ACCENT BAND TO MATCH METAL.
15. ALL BRICK VENEER SHALL BE A RUNNING BOND, U.N.O. ALL BRICK SHALL BE INSTALLED FLUSH, U.N.O. (EXCEPTIONS INCLUDE: ROWLOCK SILL, SOLDIER COURSE HEADER AT DRIVE THRU WINDOW AND BRICK CORNICE)

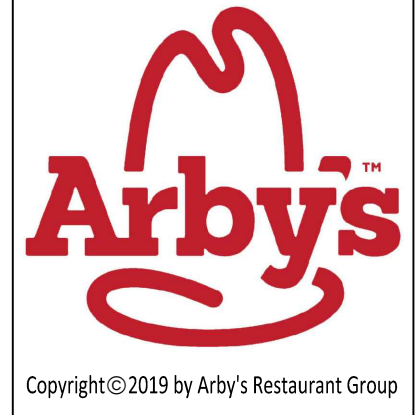


SIDE ELEVATION

2
A2.1
1/4" = 1'-0"

DAVID A. EFRAW
LICENSE #-----EXPIRES:-----

PROPRIETARY INFORMATION NOTICE:
THESE PROTOTYPICAL DOCUMENTS MAY REQUIRE REVISIONS TO CONFORM TO LOCAL, STATE, AND FEDERAL CODES, ORDINANCES OR OTHER CONDITIONS. THE DESIGN CONCEPTS EMBODIED IN THESE DOCUMENTS ARE SPECIFICALLY FOR THIS PROJECT. INFORMATION CONTAINED HEREIN REMAINS THE SOLE PROPERTY OF ARBY'S RESTAURANT GROUP, IS CONFIDENTIAL AND PROPRIETARY AND IS NOT TO BE COPIED, REPRODUCED, DISCLOSED OR OTHERWISE TRANSFERRED TO OTHER PARTIES IN ANY FORM WHATSOEVER WITHOUT THE EXPRESS WRITTEN CONSENT OF ARBY'S RESTAURANT GROUP.



ARBY'S RESTAURANT
INSPIRE WORKSMART 2400
12936 ALBEMARLE RD
MINT HILL, NC 28277
FOR
CALIBER INVESTMENTS ALBEMARLE ROCKY RIVER, LLC
215 QUEENS RD, #200, CHARLOTTE, NC 28204

PROJECT NUMBER:
ARF-139

ISSUE	DATE
PRELIMINARY	MAY 15, 2019

EXTERIOR ELEVATIONS

SHEET:

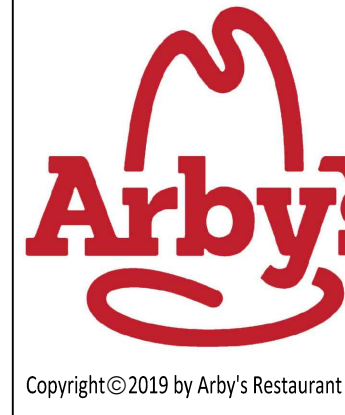
A2.1

CODED NOTES # (ALL CODED NOTES MAY NOT BE USED)

1. PRE-FINISHED METAL COPING.
2. PRE-FABRICATED METAL CANOPY/ACCENT BAND.
3. HORIZONTAL SIDING.
4. PRE-FABRICATED METAL POST FOR CANOPY.
5. ARBY'S SIGNAGE, MOUNT ON CANOPY/ACCENT BAND. REFER TO SIGNAGE VENDOR DRAWINGS.
6. PAINT DOOR AND FRAME.
7. EIFS WALL SYSTEM.
8. EIFS CORNICE.
9. EIFS WALL SYSTEM WITH 4" O.C. V-GROOVE REVEALS. REFER TO 2/A4.4.
10. EIFS ACCENT BAND.
11. DRIVE THRU WINDOW. PROVIDE STAINLESS STEEL SILL.
12. WALL MOUNTED LIGHT FIXTURE.
13. 6" CONC. FILLED STEEL PEPE BOLLARD, PAINT YELLOW.
14. PAINT GUARD RAIL.
15. PAINT ROOF LADDER.
16. BRICK VENEER, RUNNING BOND.
17. BRICK ROWLOCK SILL.
18. BRICK CORNICE, SOLDIER COURSE.
19. ELECTRICAL EQUIPMENT.
20. GAS METER. REFER TO MEP DRAWINGS FOR EXACT LOCATION. PAINT TO MATCH BRICK.
21. GREASE OUTLET.
22. CO2 HOOKUP.
23. COOLER/FREEZER, PAINT TO MATCH EIFS.
24. ALUMINUM STOREFRONT.
25. PREFABRICATED SCUPPER BOX. MATH COLOR TO ADJACENT WALL COLOR. REFER TO DETAIL 6/A1.2
26. CONTINUE BRICK VENEER BEHIND ELECTRIC EQUIPMENT. COORDINATE SIZE WITH ELECTRICIAN. DO NOT INSTALL ROWLOCK BEHIND ELECTRICAL EQUIPMENT.
27. ARBY'S HAT SIGNAGE MOUNT ON BRICK WALL REFER TO SIGNAGE VENDORS DRAWINGS.

DAVID A. EFRAW
 LICENSE #-----EXPIRES:-----

PROPRIETARY INFORMATION NOTICE:
 THESE PROTOTYPICAL DOCUMENTS MAY REQUIRE REVISIONS TO CONFORM TO LOCAL, STATE, AND FEDERAL CODES, ORDINANCES OR OTHER CONDITIONS. THE DESIGN CONCEPTS EMBODIED IN THESE DOCUMENTS ARE SPECIFICALLY FOR THIS PROJECT. INFORMATION CONTAINED HEREIN REMAINS THE SOLE PROPERTY OF ARBY'S RESTAURANT GROUP, IS CONFIDENTIAL AND PROPRIETARY AND IS NOT TO BE COPIED, REPRODUCED, DISCLOSED OR OTHERWISE TRANSFERRED TO OTHER PARTIES IN ANY FORM WHATSOEVER WITHOUT THE EXPRESS WRITTEN CONSENT OF ARBY'S RESTAURANT GROUP.



ARBY'S RESTAURANT
 INSPIRE WORKSMART 2400
 12936 ALBEMARLE RD
 MINT HILL, NC 28277
 FOR
 CALIBER INVESTMENTS ALBEMARLE ROCKY RIVER, LLC
 215 QUEENS RD, #200, CHARLOTTE, NC 28204

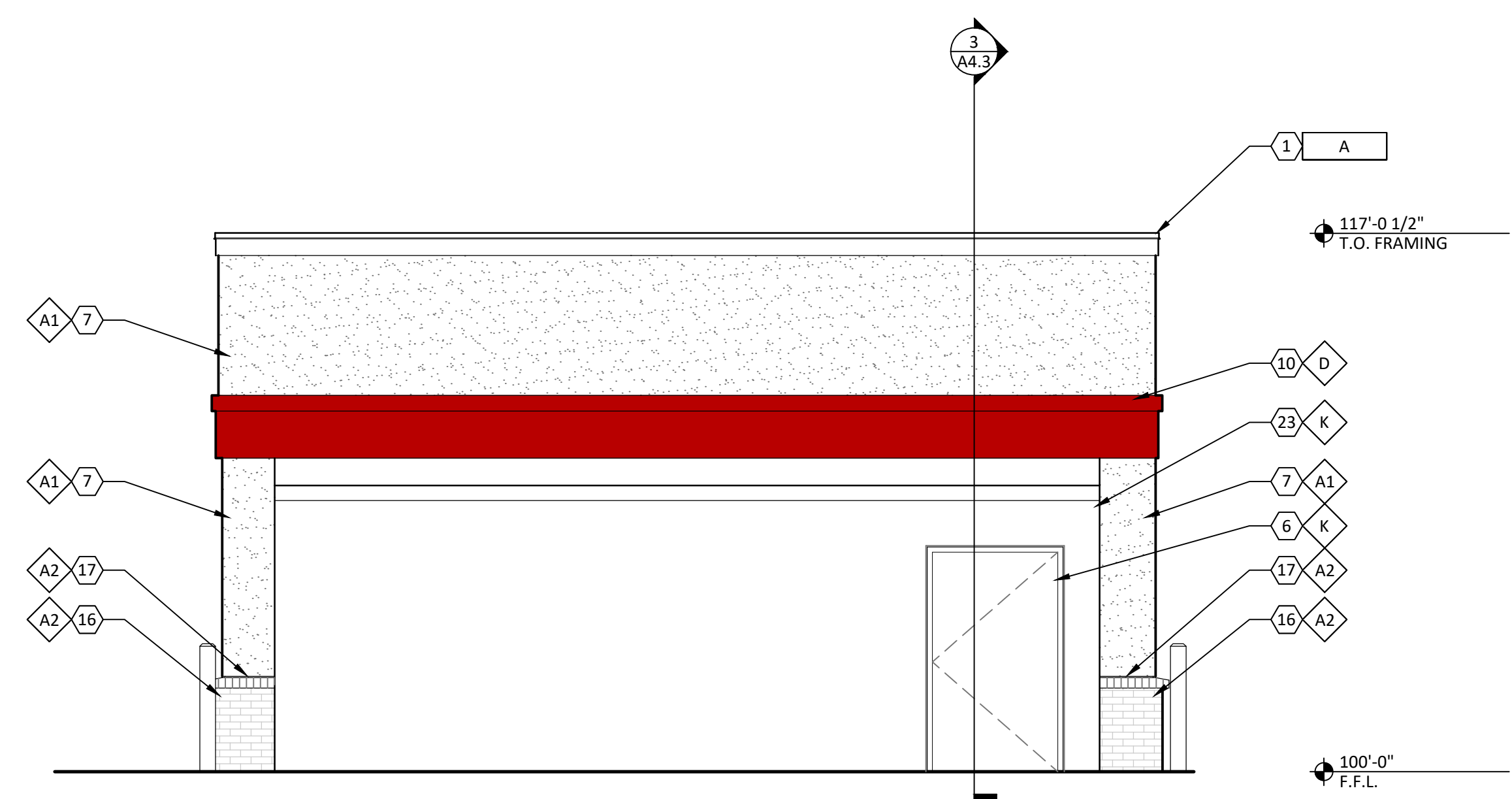
PROJECT NUMBER:
 ARF-139

ISSUE	DATE
PRELIMINARY	MAY 15, 2019

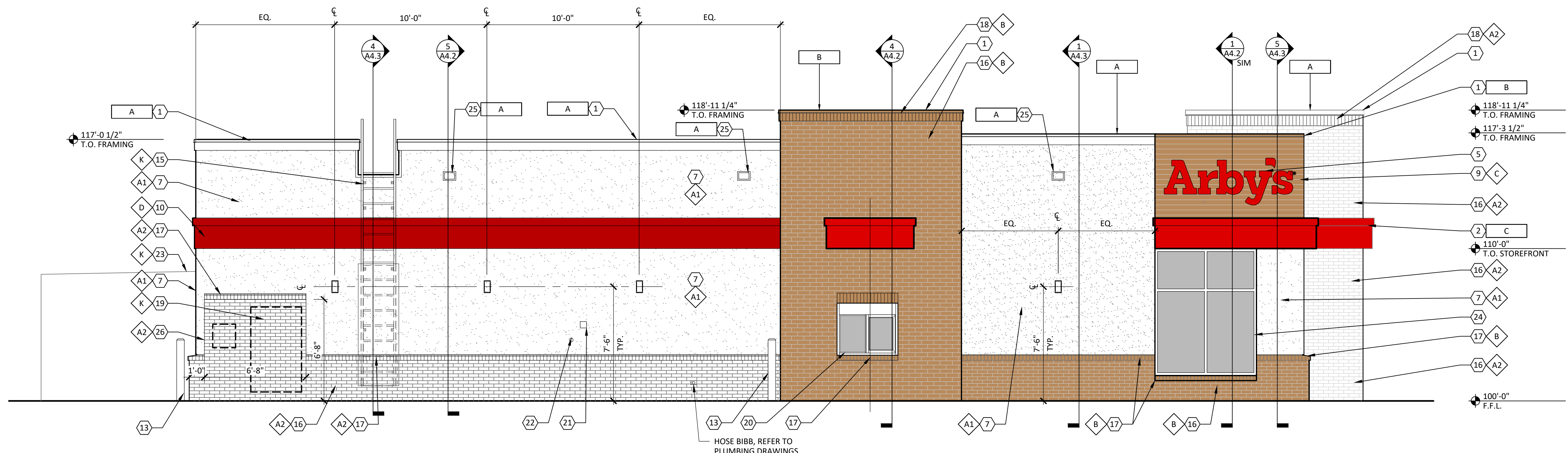
EXTERIOR ELEVATIONS

SHEET:

A2.2



1 REAR ELEVATION
 1/4" = 1'-0"



2 SIDE ELEVATION
 1/4" = 1'-0"