

Vermont Route 22A Truck Route Study



Welcome

- Adam Lougee, *ACRPC*
- Representative Diane Lanpher, *Vergennes*
- Mayor Renny Perry, *Vergennes*

Agenda

- Study Team
- Study Overview
- Existing Conditions
- Discussion: Issues and Concerns
- Next Steps

Study Management Team

- Adam Lougee, *ACRPC*
- Joe Segale, *Vtrans*
- Sommer Bucossi, *VTrans*
- Ken Robie, *VTrans*
- Greg Edwards, *Stantec*
- Rick Bryant, *Stantec*
- Cindy Cook, *Adamant Accord*

Communications

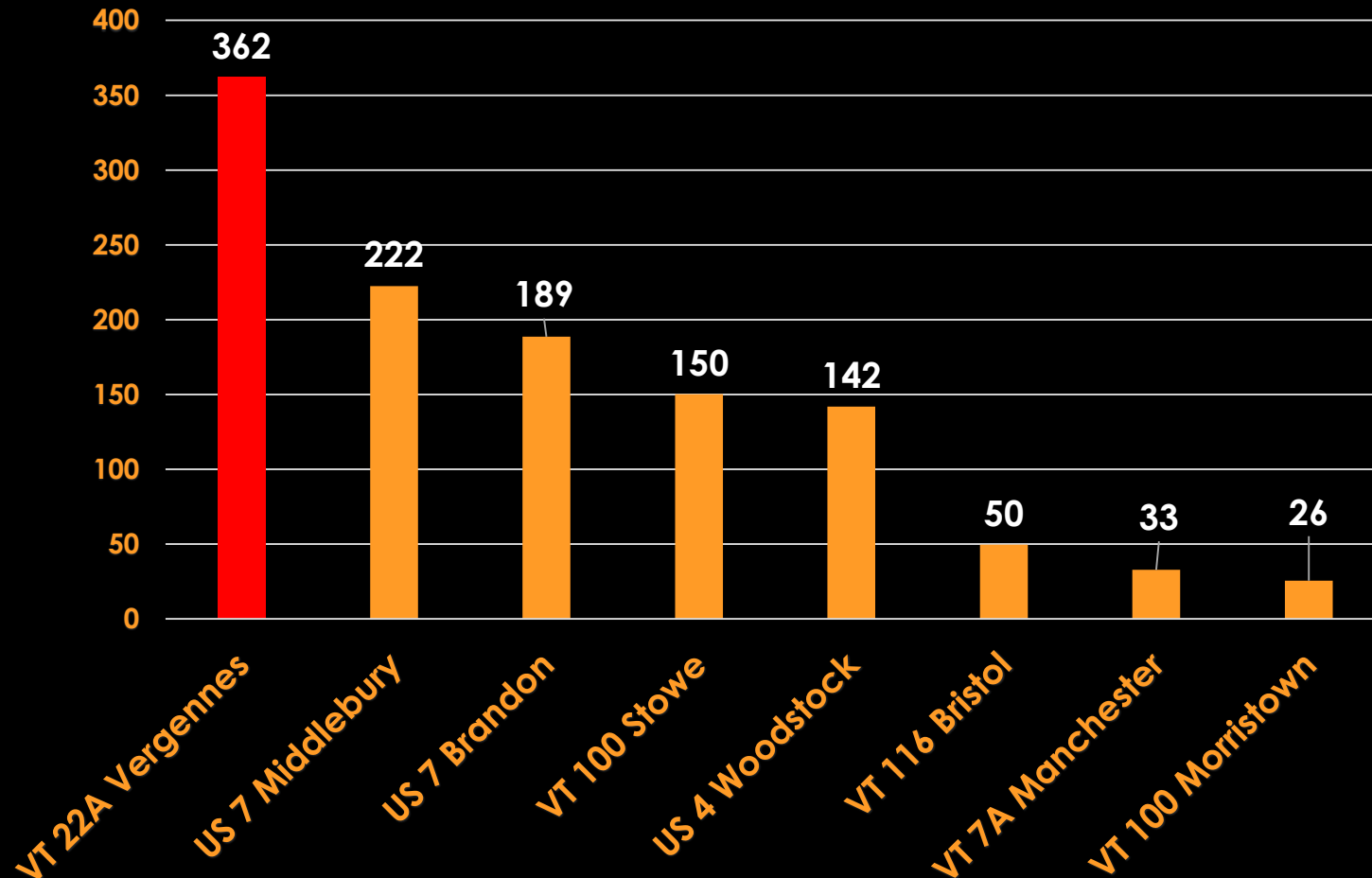
[acrpc.org/programs-services/
transportation/transportation-
projects/](http://acrpc.org/programs-services/transportation/transportation-projects/)

Cindy Cook, Adamant Accord
ccook@adamantaccord.com

802 223-1330

Why We're Here

Large Trucks



Source: VTrans Traffic Data

Why We're Here

10% GRADE



HISTORIC CENTER

THE FUTURE CURRENT TREND (2007 TO 2035)

- VT 22A Truck Traffic
 - 20-40% Increase US 4 to VT 17
 - 40-60% Increase VT 17 to US 7

Source: 2012 Vermont Freight Plan



Why We Invited You Here

- Identify Issues and Concerns
- Express Community Values and Priorities
- Help Guide this Study

Study Scope

Evaluate three strategies to enhance economic vitality and quality of life in Downtown Vergennes.....

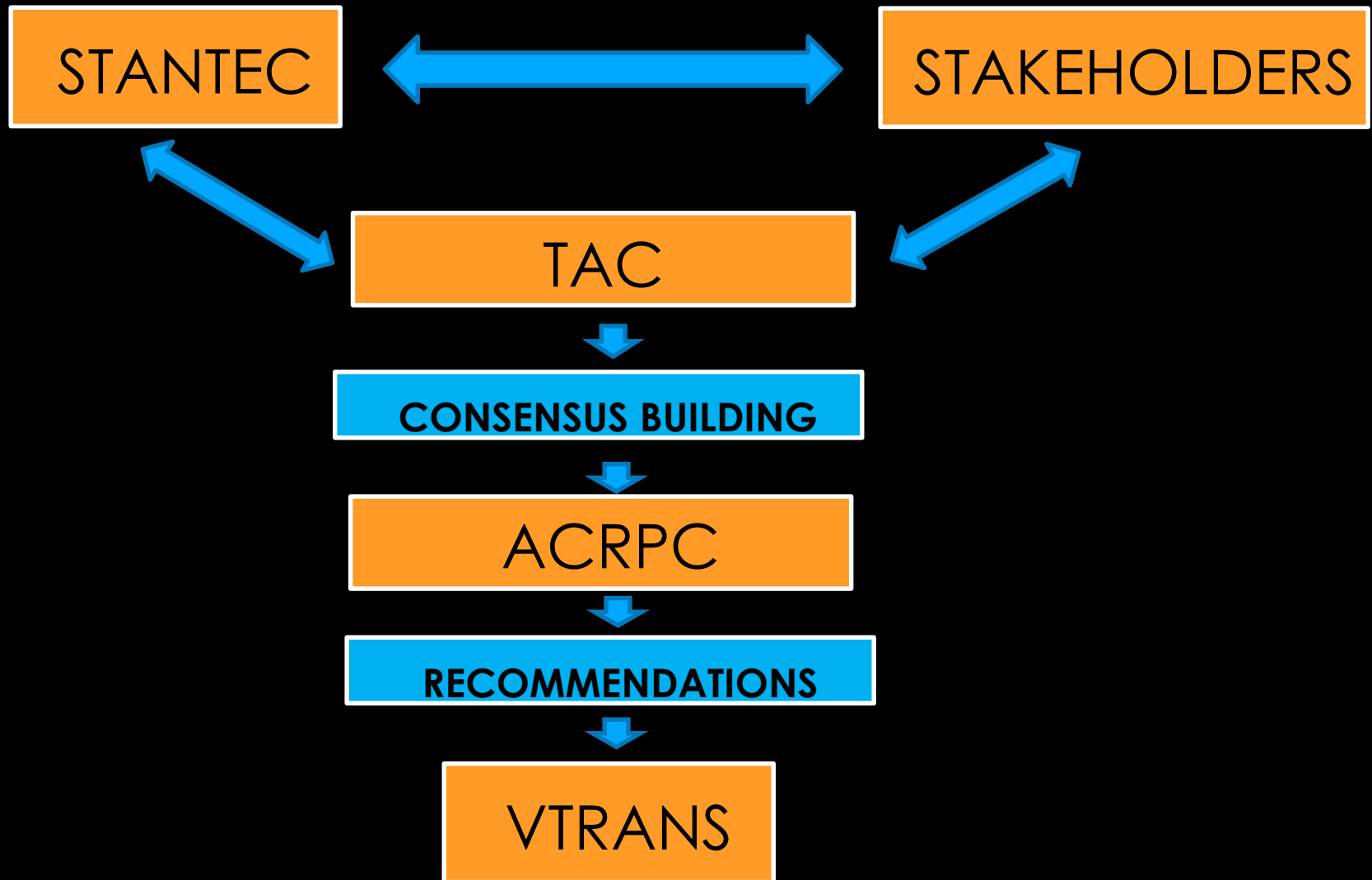


Study Scope

.... while considering impacts on neighboring communities.



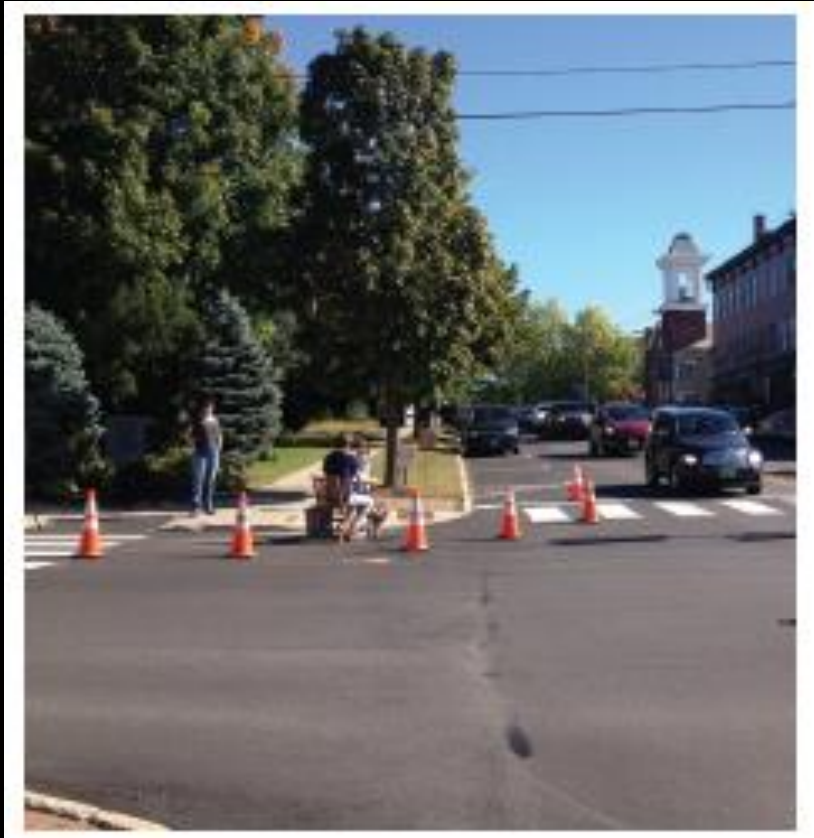
Overall Study Process



Three Alternatives



Downtown Vergennes Alternative



Vergennes Downtown-Basin Master Plan

Downtown Alternative



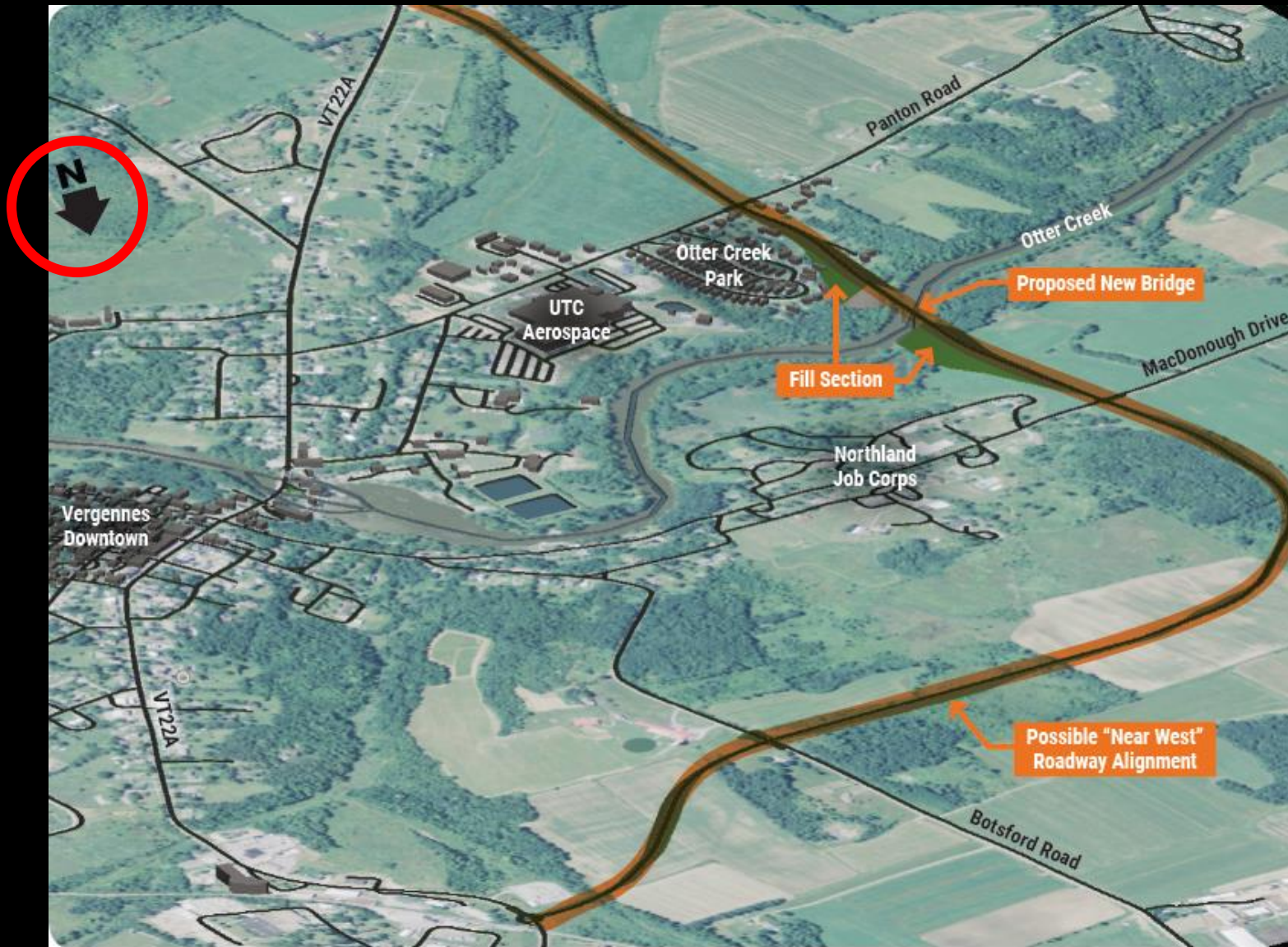
Downtown Alternative



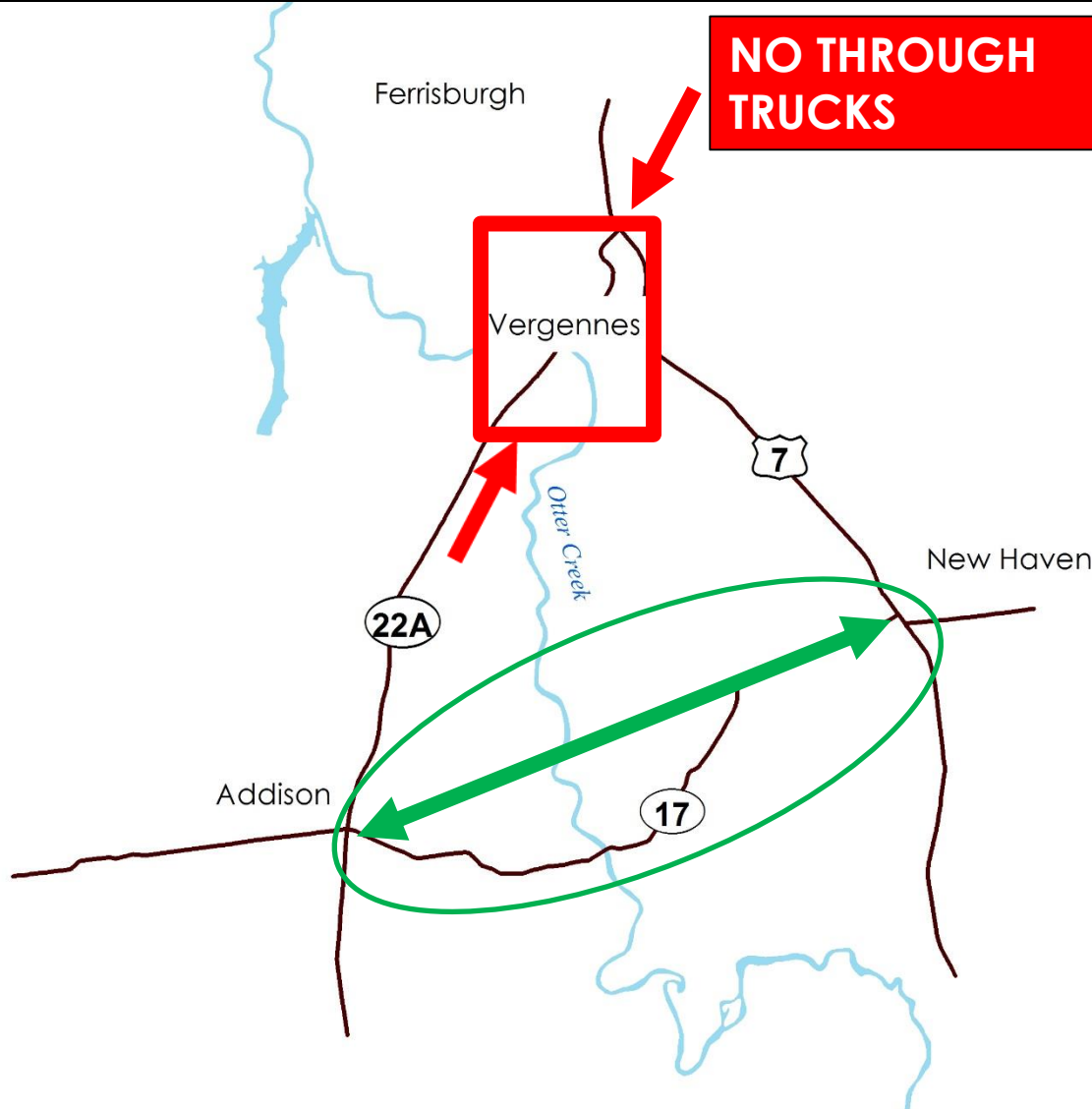
New Truck Route



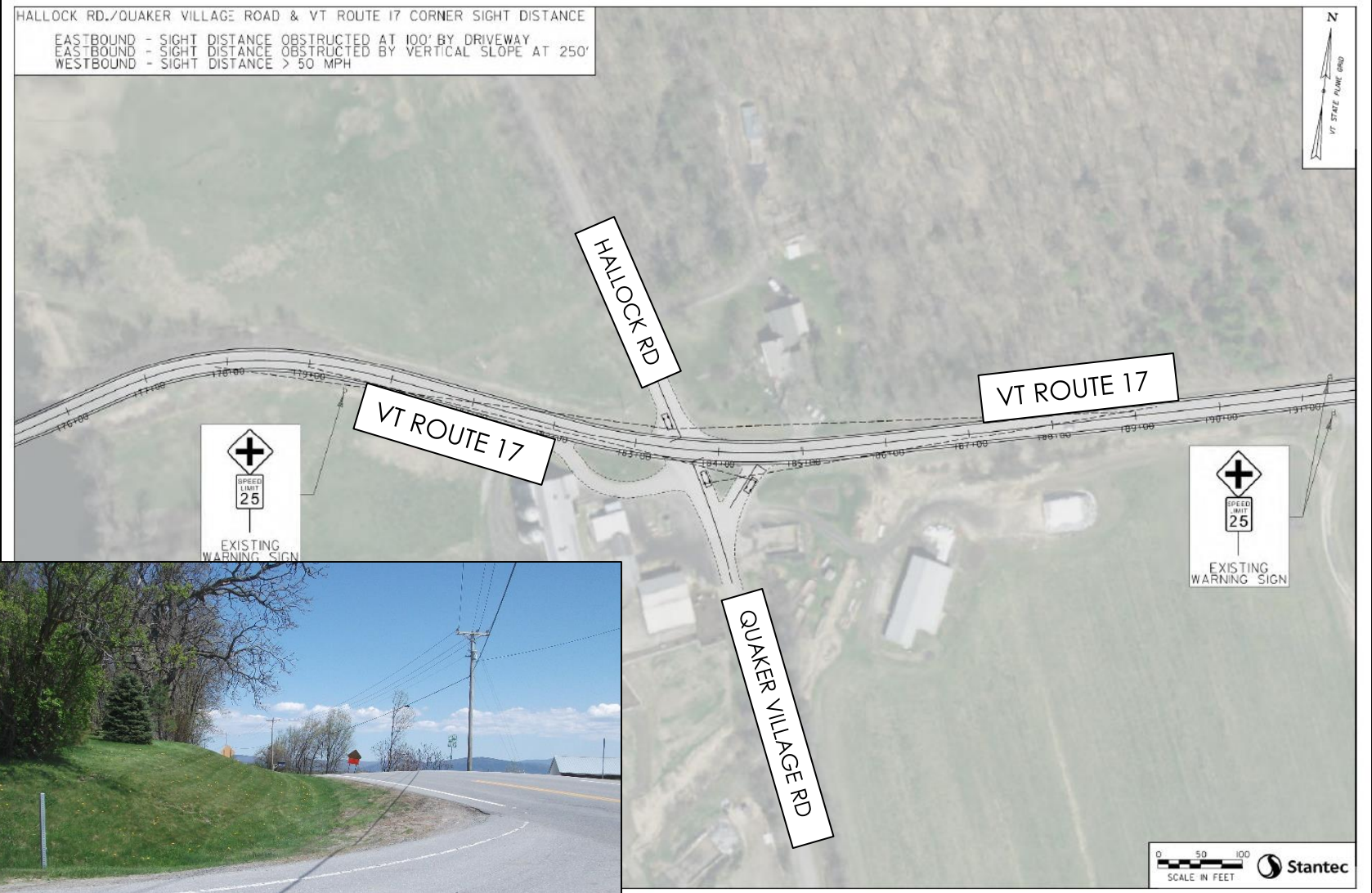
New Truck Route



Route 17 Alternative



Route 17 Study Scope



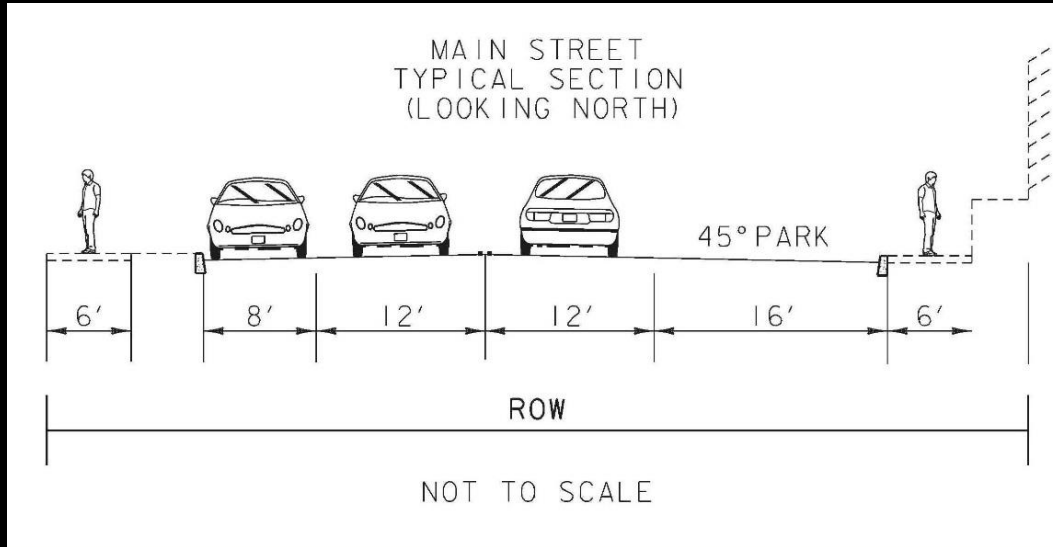
Alternatives Evaluation

- Concept Development
- Feasibility/Time Frame
- Cost-Benefit

Existing Conditions Data

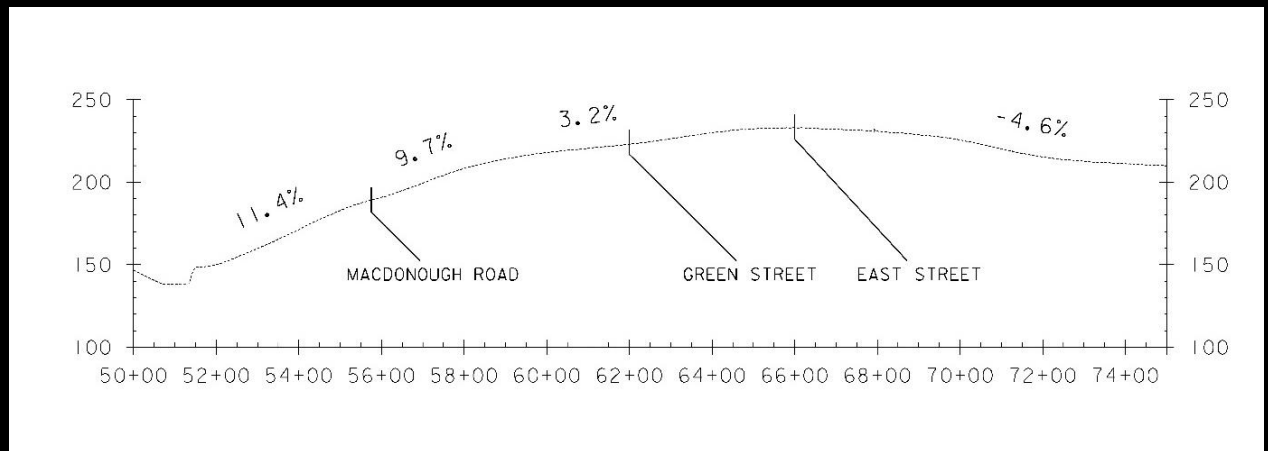


Roadways

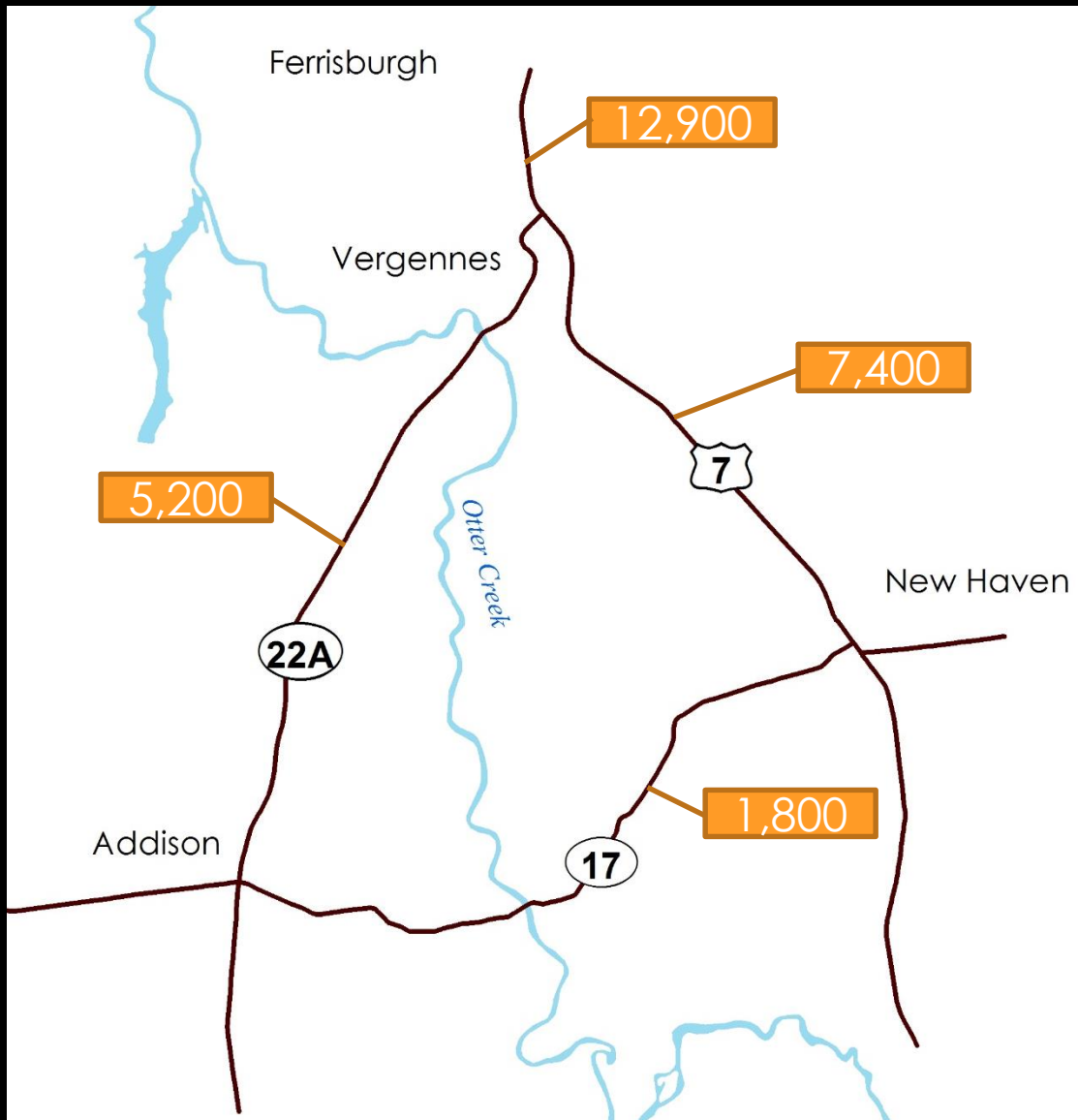


Geometry

Grades

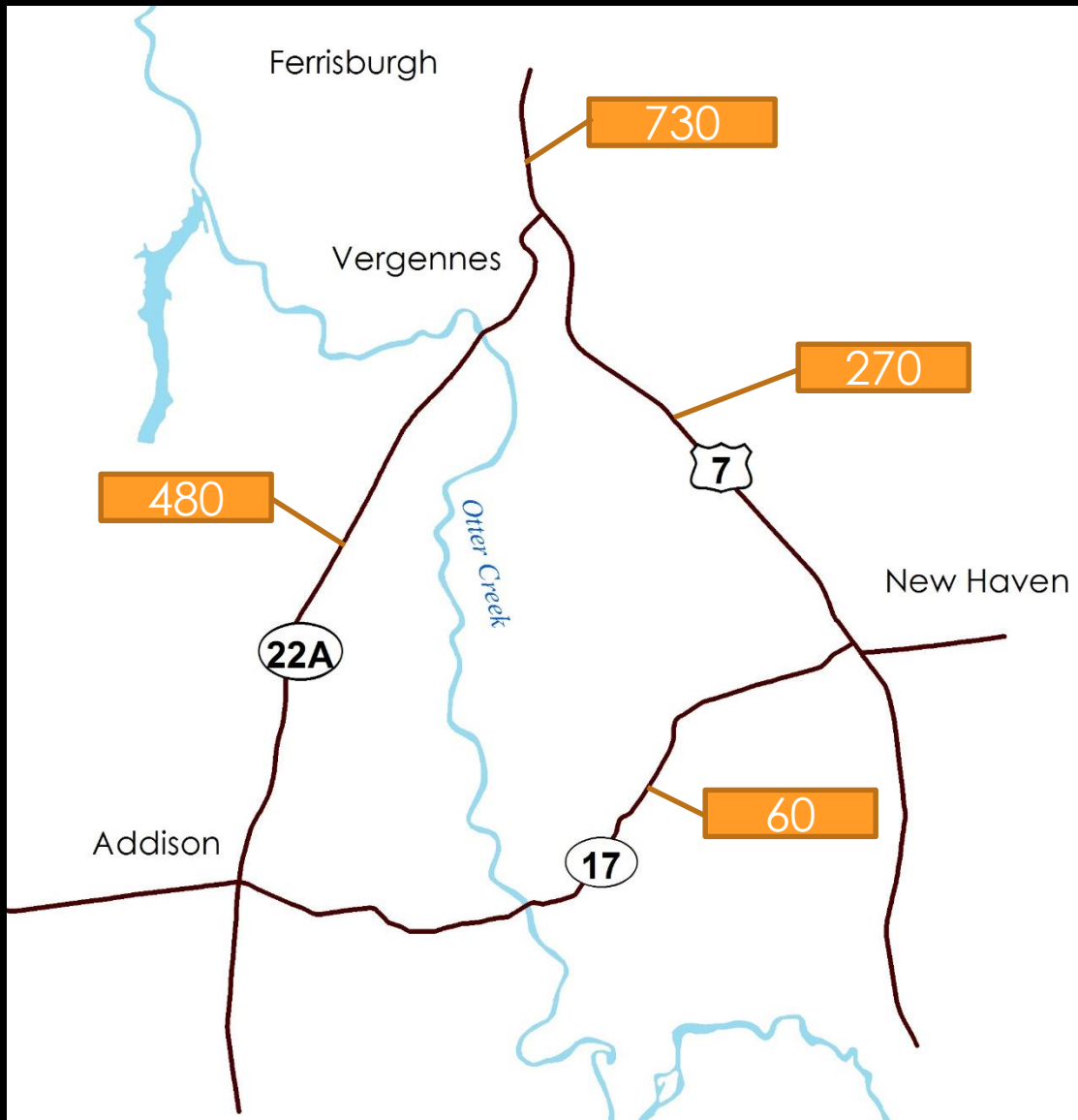


Traffic Volumes



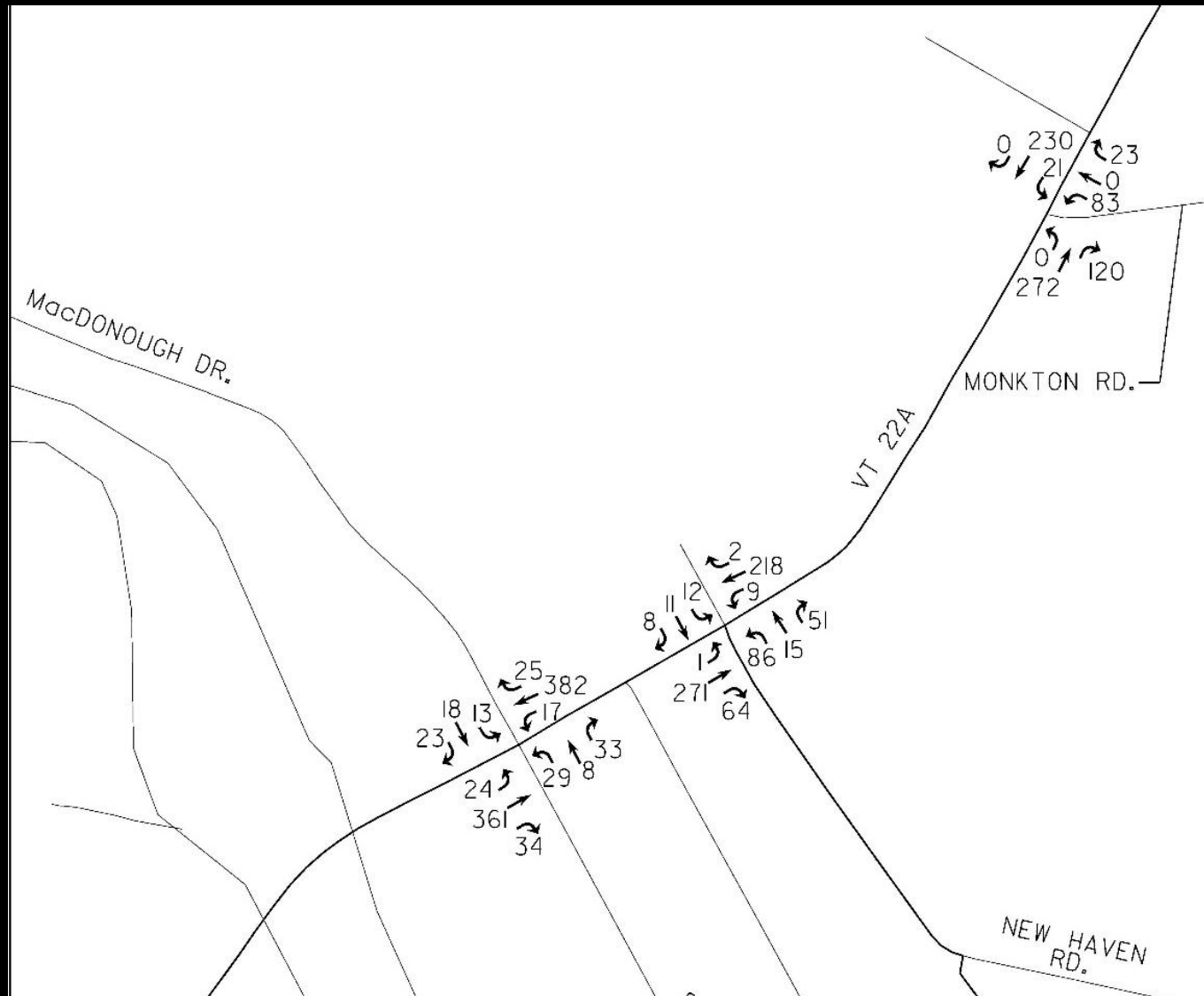
Daily Volumes

Truck Volumes

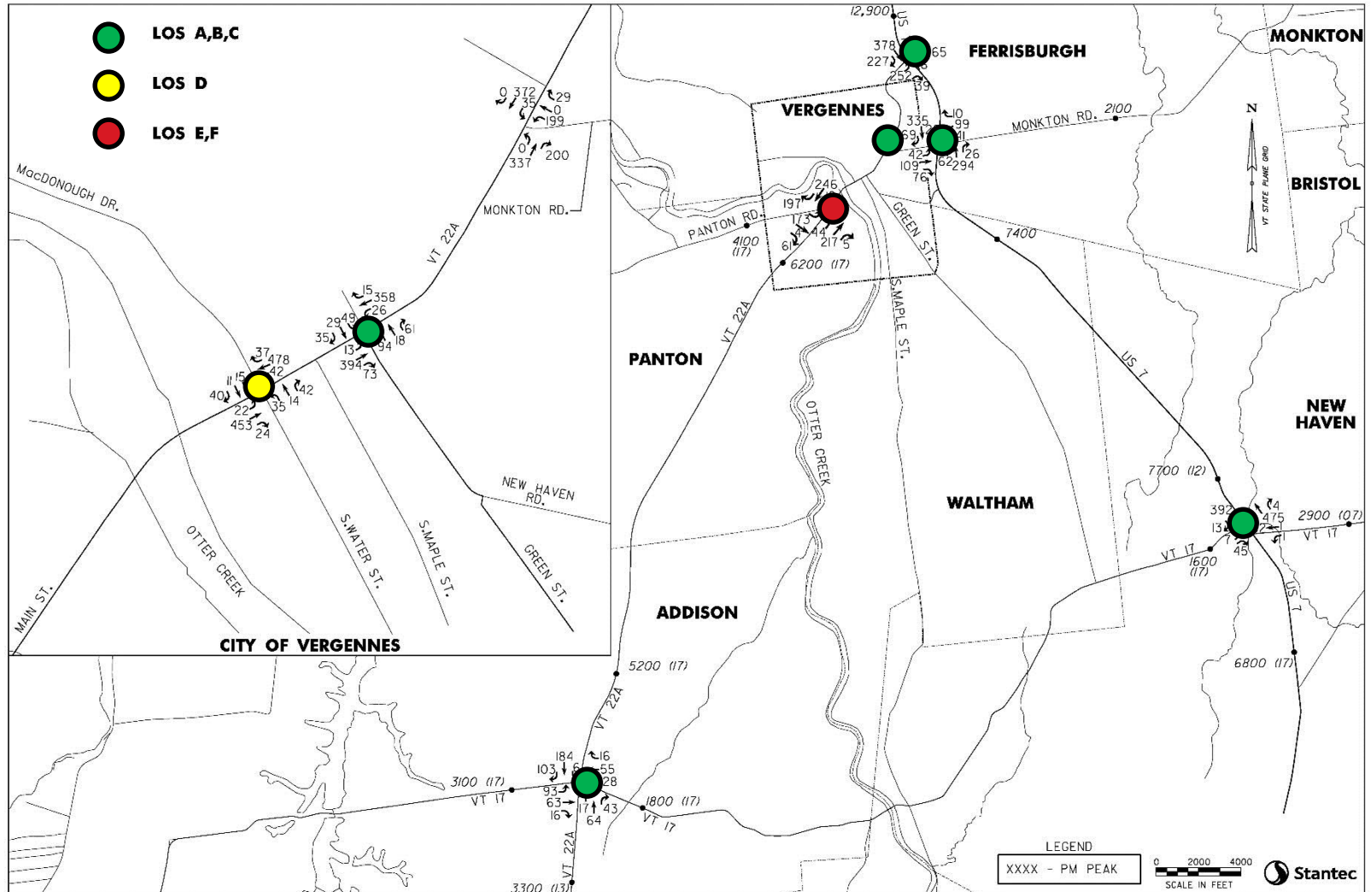


Large Trucks

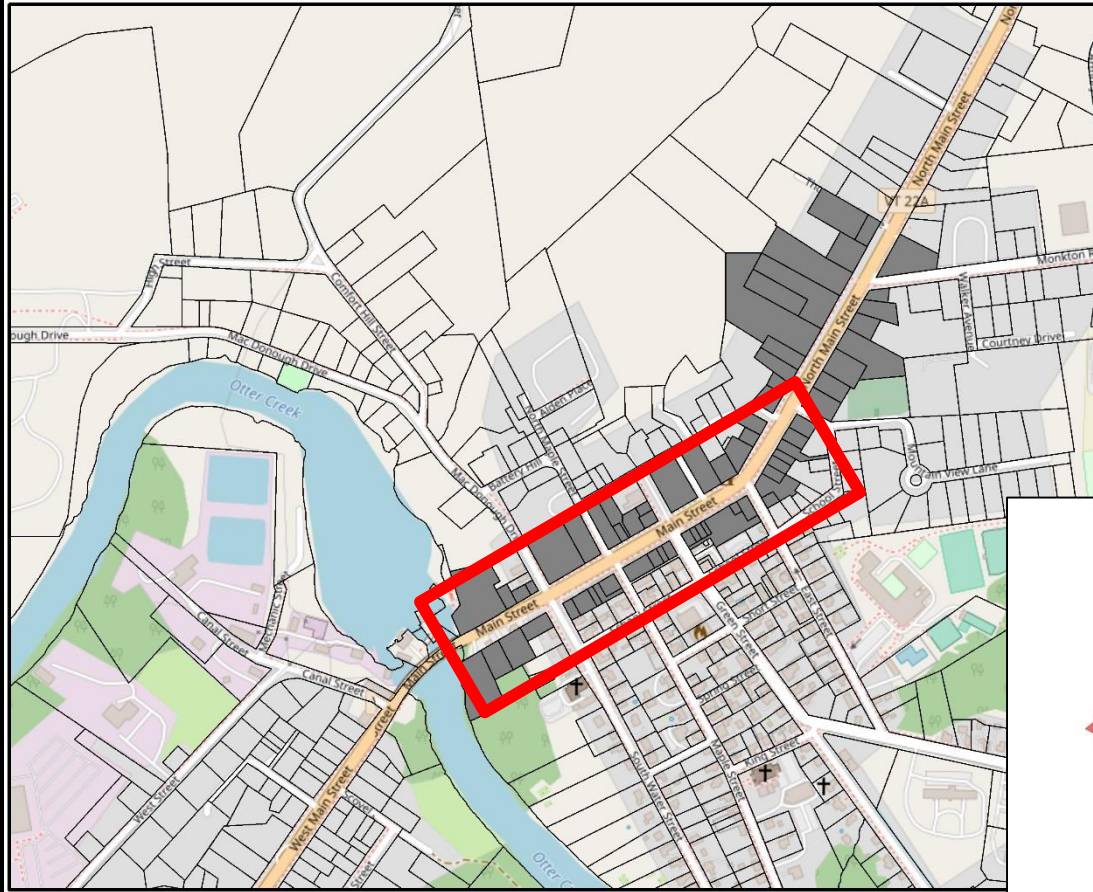
Peak Hour Volumes



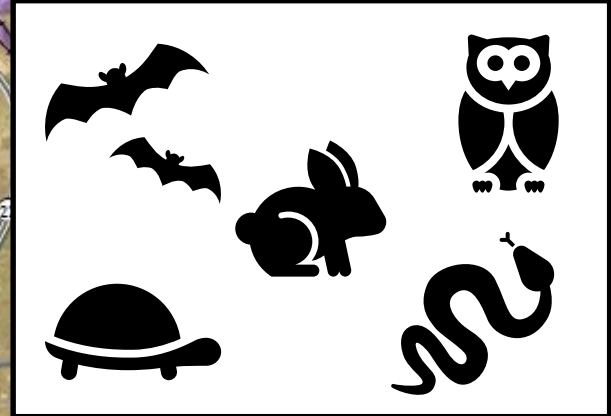
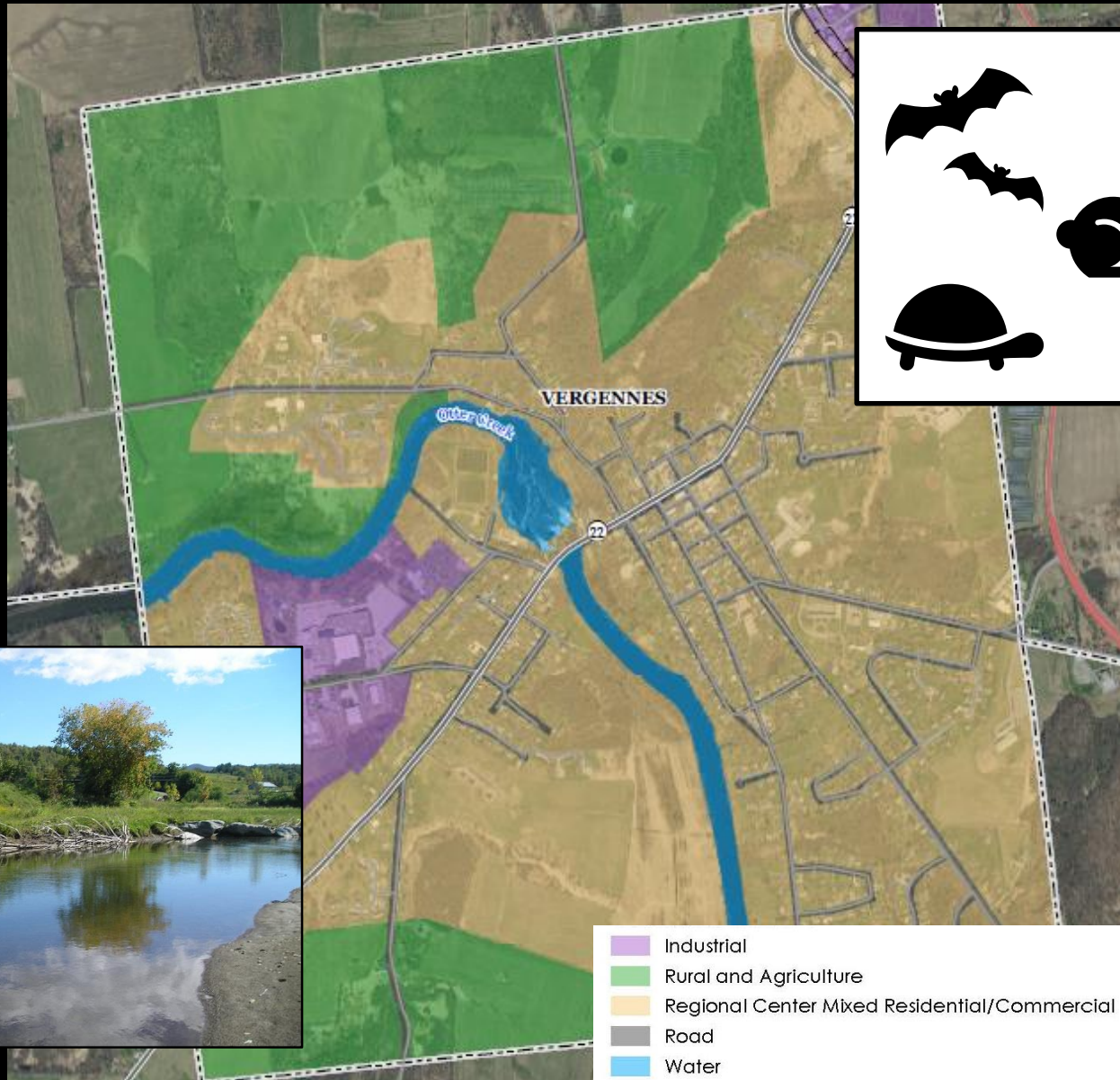
Peak Hour Operations



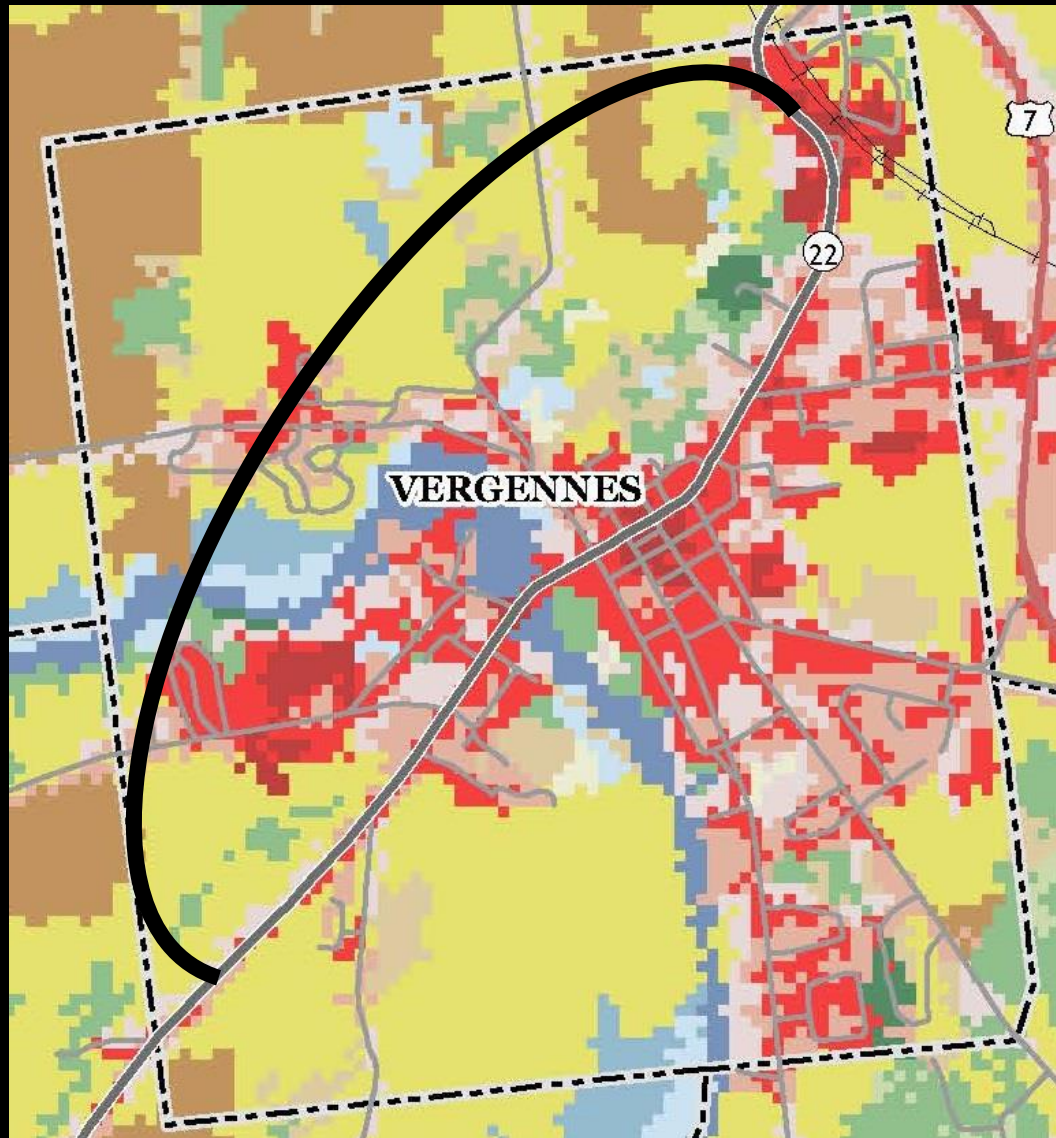
Economic Impacts



Environmental Resources



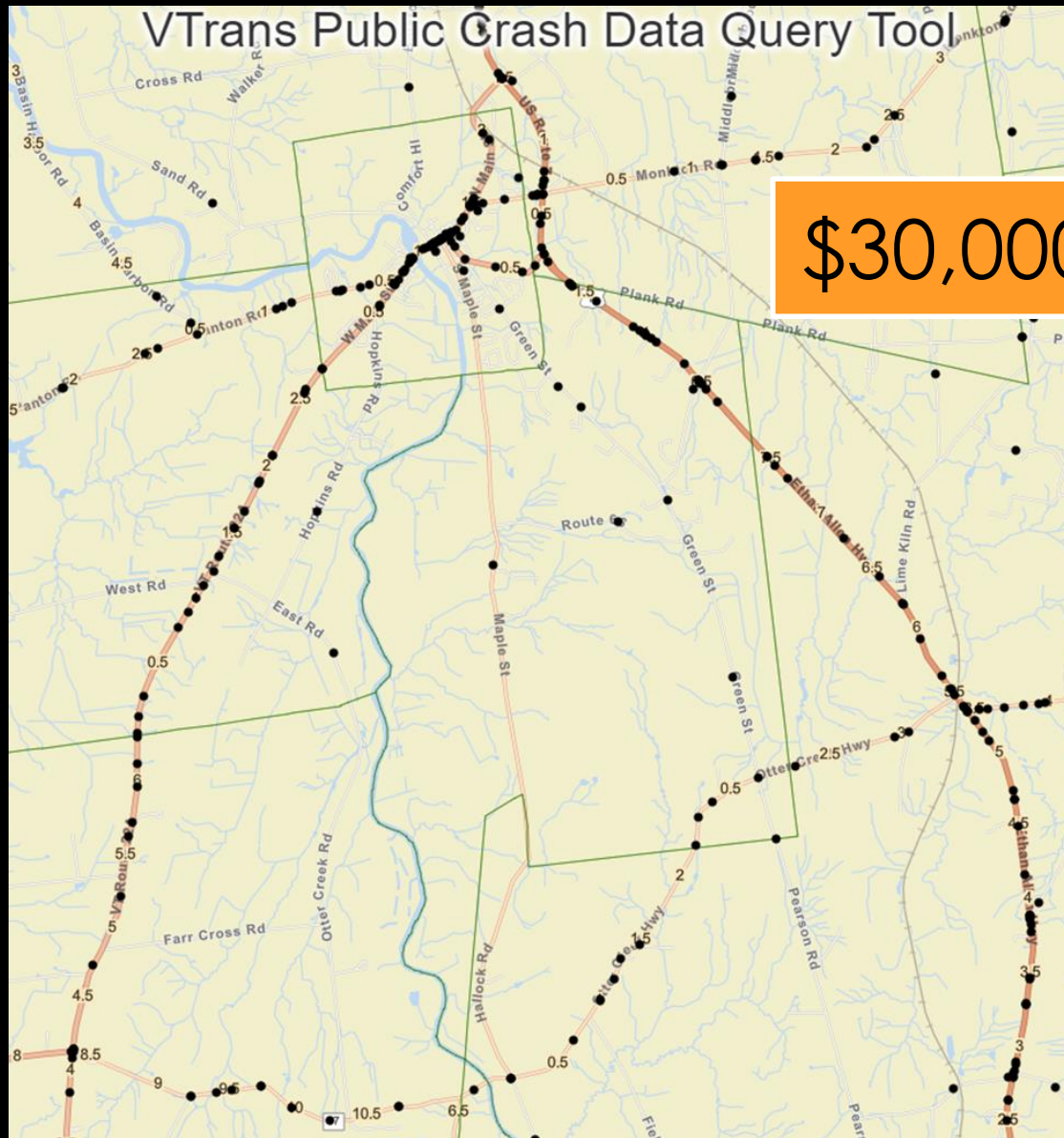
Current Land Use



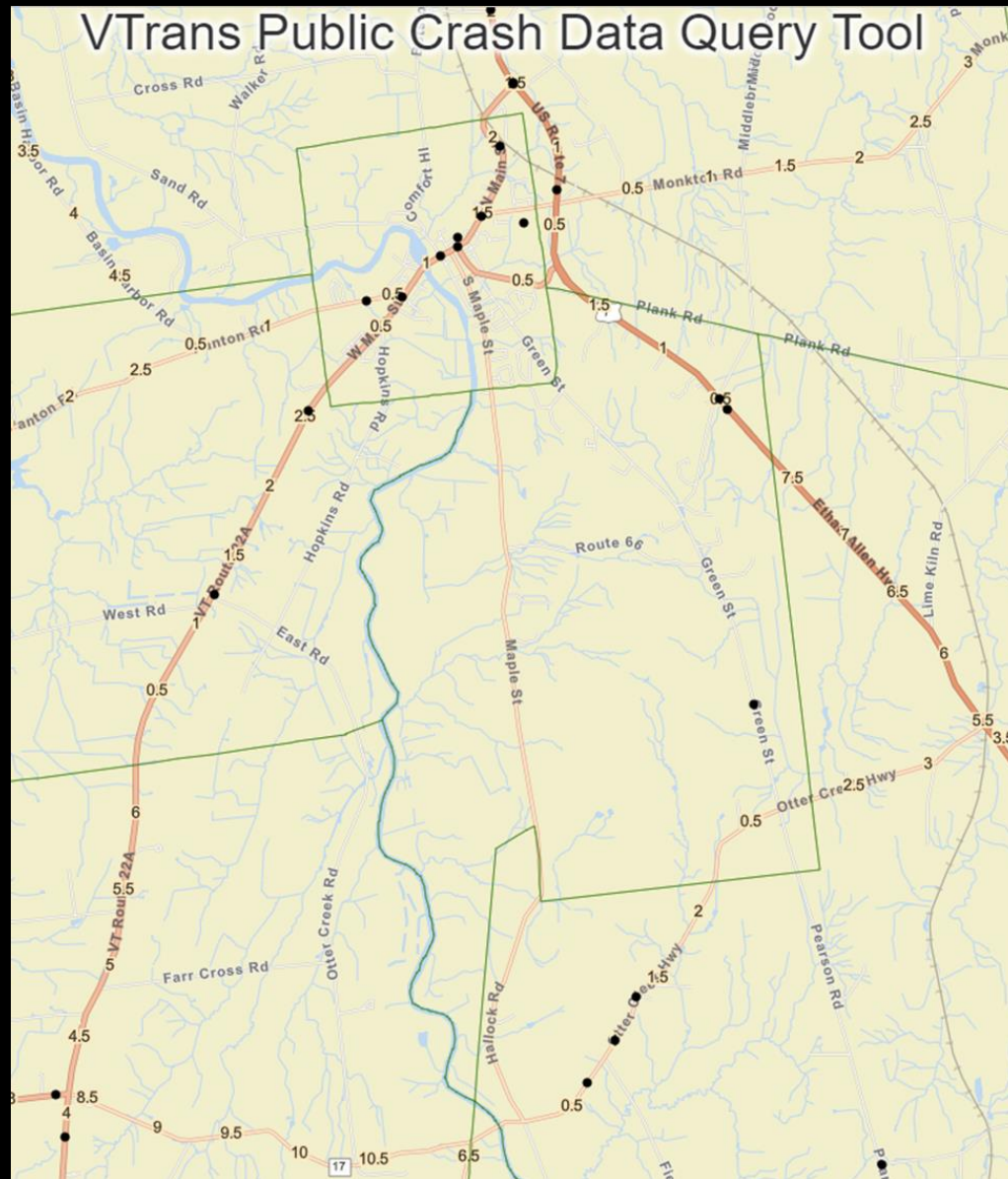
2011 National Land Cover Database

- Open Water
- Developed, Open Space
- Developed, Low Intensity
- Developed, Medium Intensity
- Developed, High Intensity
- Barren Land (Rock/Sand/Clay)
- Deciduous Forest
- Evergreen Forest
- Mixed Forest
- Shrub/Scrub
- Grassland/Herbaceous
- Pasture/Hay
- Cultivated Crops
- Woody Wetlands
- Emergent Herbaceous Wetlands

Vehicular Crashes



Crashes Involving Trucks



We're Seeking Your Input

- How does truck traffic impact downtown Vergennes?
- What impacts particularly affect you?
- What should be considered when evaluating alternatives?

We're Seeking Your Input

- How can rail operations and technology improvements effect truck impacts?
- What are some short term improvements to consider?

Next Steps

- Share your comments (visit Website)
- Monthly TAC meetings
- Analysis of Alternatives (Stantec)
- January public hearing



Communications

[acrpc.org/programs-services/
transportation/transportation-
projects/](http://acrpc.org/programs-services/transportation/transportation-projects/)

Cindy Cook, Adamant Accord
ccook@adamantaccord.com

802 223-1330