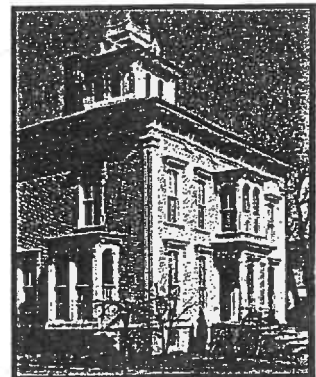
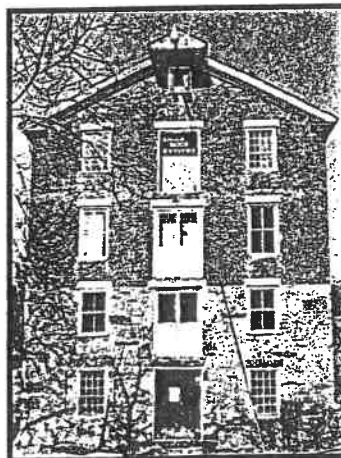


# THE HISTORIC ARCHITECTURE OF ADDISON COUNTY

VERMONT STATE REGISTER OF HISTORIC PLACES

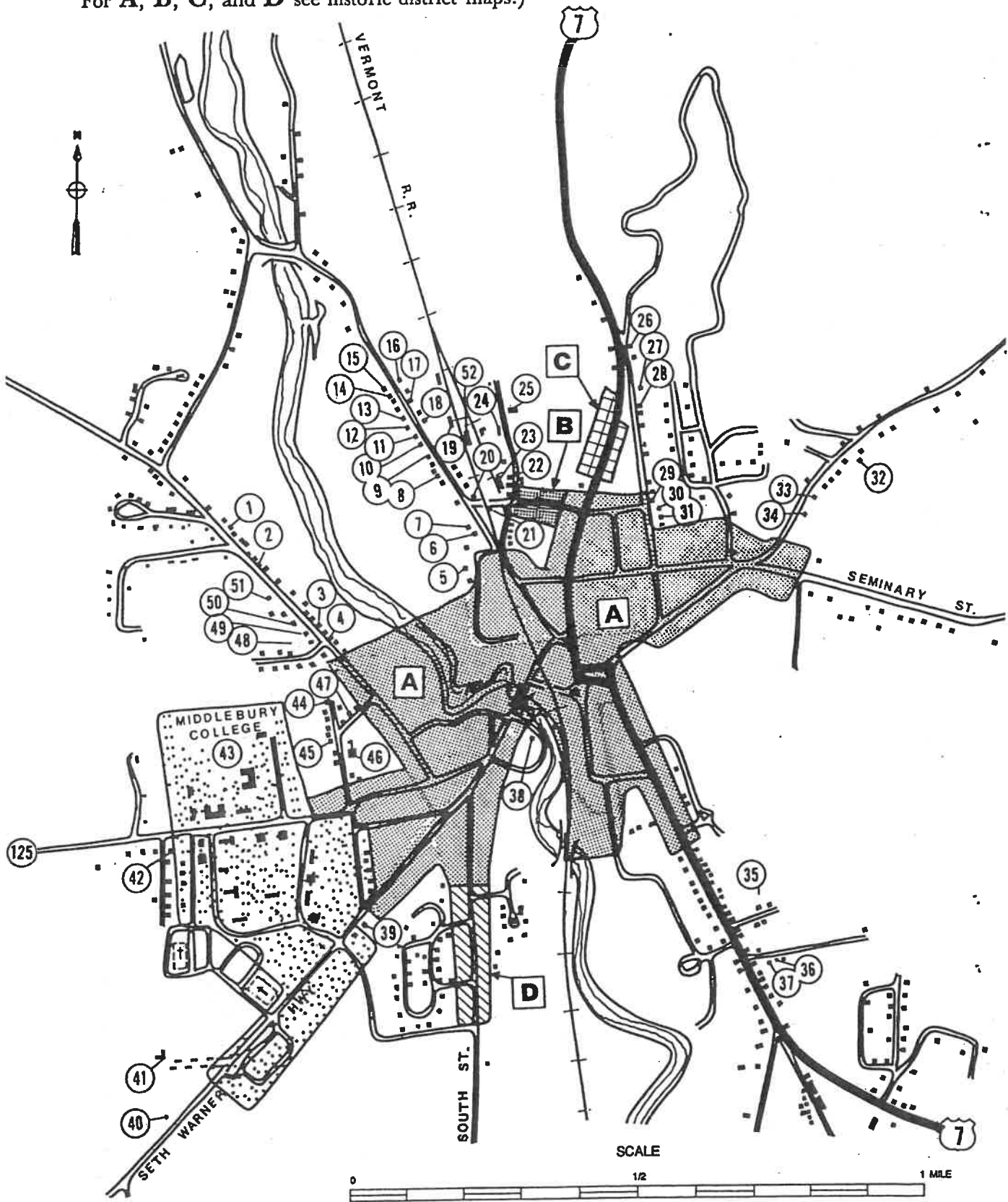
## MIDDLEBURY VILLAGE



VERMONT DIVISION FOR HISTORIC PRESERVATION

# MIDDLEBURY VILLAGE AREA MAP

Sites listed in the State Register of Historic Places  
(Numbers correspond to Register listings that follow.  
For A, B, C, and D see historic district maps.)



**VILLAGE OF MIDDLEBURY**  
**Sites listed in**  
**the State Register**  
**of Historic Places**  
**(For locations**  
**see village area and**  
**historic district maps.)**

**1 House, c.1920**  
 Wood shingle, gable roof,  
 1½ stories.  
 Features: rafter tails, porch,  
 distinctive chimney.

**2 House, c.1860**  
 Gable roof, 1½ stories.  
 Features: Queen Anne  
 porch, distinctive door.

**3 House, c.1930**  
 Colonial Revival style,  
 gambrel roof, 2 stories.  
 Features: bay window.  
 Related shed.

**4 House, c.1900**  
 Gable roof, 2 stories.  
 Features: Colonial Revival  
 porch, distinctive door.  
 Related garage.  
 Features: historic garage  
 door.

**5 House, c.1800/c.1900**  
 Georgian plan.  
 Features: distinctive door,  
 transom, Italianate porch.

**6 House, c.1850**  
 Classic Cottage.  
 Features: Gothic wall  
 corner, peaked lintelboards,  
 distinctive door.

**7 House, c.1825/c.1866**  
 Gable roof, 1½ stories.  
 Features: segmental arch  
 window, distinctive door.  
 Related carriage barn.

**8 House, c.1850**  
 Gable roof, 1½ stories.  
 Features: distinctive door,  
 porch.

**9 House, c.1890**  
 Tri-Gable Ell, hip roof,  
 2 stories.  
 Features: cornice caps.

**10 House, c.1840**  
 Gable roof, 1½ stories.  
 Features: distinctive  
 chimney, entry entablature.

**11 House, c.1845**  
 Greek Revival style, Classic  
 Cottage.  
 Features: distinctive door,  
 paneled corner pilasters,  
 marble.

**12 House, 1871**  
 Greek Revival style, stucco,  
 sidehall plan, 1½ stories.  
 Features: entry entablature,  
 sidelights, Queen Anne  
 porch, entry pilasters, label  
 lintels.

**13 House, 1871**  
 Greek Revival style, sidehall  
 plan, 1½ stories.  
 Features: entry entablature,  
 sidelights, entry pilasters,  
 label lintels.

**14 House, c.1850**  
 Gable roof, 1½ stories.  
 Features: porch.

**15 House, c.1850**  
 Sidehall plan, 1½ stories.  
 Features: porch.

**16 House, c.1865**  
 gable roof, 1½ stories.  
 Features: Colonial Revival  
 porch, distinctive door.  
 Related shed, shed.

**17 House, c.1860**  
 Gable roof, 1½ stories.  
 Features: Queen Anne  
 porch.

**18 House, c.1860**  
 Gable roof, 1½ stories.  
 Features: bay window,  
 cornice caps, distinctive  
 door.

**19 Warehouse, c.1910**  
 Gable roof, 2 stories.

**20 House, 1798/1868**  
 Italianate style, hip roof,  
 2 stories.  
 Features: Italianate porch,  
 cornice brackets, Queen  
 Anne porch.

**21 Bridge, 1925**  
 Architect/builder: Boston  
 Bridge Works  
 Deck truss.

**22 Duplex, c.1890**  
 Gable roof, 2½ stories.  
 Features: Queen Anne  
 porch, distinctive door.

**23 Warehouse, c.1900**



Gable roof, 2½ stories.

**24 Warehouse, c.1895**  
 Gable roof, 2½ stories.  
 Features: distinctive door,  
 fieldstone.

**25 Creamery, c.1900**  
 Flat roof, 1 story.  
 Features: decorative  
 brickwork.

**26 House, c.1870**  
 Gable roof, 2 stories.  
 Features: Italianate porch,  
 distinctive door, cornice  
 caps.  
 Related garage, shed.

**27 House, c.1875**  
 Sidehall plan, 1½ stories.  
 Features: cornice brackets,  
 porch, distinctive door,  
 enriched frieze.

**28 House, c.1925**  
 Hip roof, 2 stories.  
 Features: Colonial Revival  
 porch, bay window, distinc-  
 tive door.  
 Related garage.

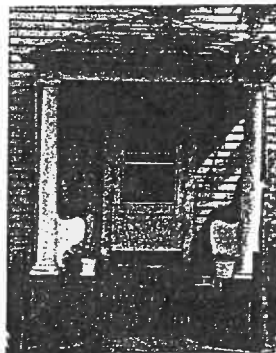
**29 House, c.1812/c.1863**  
 sidehall plan, 1½ stories.  
 Features: Italianate porch.  
 Related garage.

**30 House, c.1870**  
 Georgian plan.  
 Features: Colonial Revival  
 porch, bay window, cornice  
 caps.

**31 House, c.1820**  
 Gable roof, 2 stories.  
 Features: Colonial Revival  
 porch, central chimney.  
 Related carriage barn.

**32 House, c.1940**  
 Colonial Revival style, brick,  
 gable roof, 2 stories.  
 Features: lintels, marble,  
 Colonial Revival porch,  
 gable fan.

**33 House, c.1925**



Hip roof, 2 stories.  
 Features: Colonial Revival  
 porch, distinctive door.

**34 House, c.1940**  
 Colonial Revival style,  
 stucco, gambrel roof,  
 1½ stories.  
 Features: decorative  
 brickwork, distinctive  
 dormer.

**35 Carriage Barn, c.1875**  
 Features: cupola,  
 weathervane.  
 Related house, shed.  
 Features: Queen Anne  
 porch.

**36 House, 1912**  
 Architect/builder: Thomas  
 McCray  
 Gable roof, 2½ stories.  
 Features: porch, distinctive  
 door, cornice caps.  
 Related garage.

**37 House, 1912**  
 Architect/builder: Thomas  
 McCray  
 Gable roof, 2½ stories.  
 Features: Colonial Revival  
 porch, marble, distinctive  
 door, cornice caps, distinc-  
 tive dormer.  
 Related carriage barn.

**38 House, c.1820**  
 Cape Cod.  
 Features: Queen Anne  
 porch.

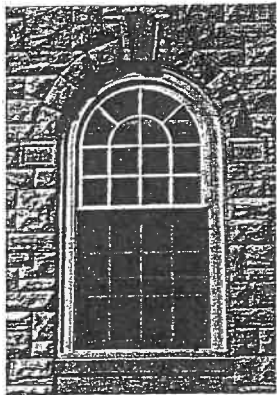
**39 House, 1809**  
 Federal style, brick, hip roof,  
 2 stories.  
 Features: flat arches,  
 sidelights, transom, distinc-  
 tive chimney.  
 Listed as a  
 National Historic Landmark

**40 House, 1803**  
 Federal style, Georgian plan,  
 hip roof.  
 Features: enriched frieze,  
 entry fan, entry pilasters, en-  
 try pediment, distinctive  
 door, distinctive chimney.  
 Related shed, shed.

**41 The Heights**  
 a House, 1870/1887  
 Architect/builder: Clinton Smith  
 Queen Anne style, brick, hip  
 roof, 2½ stories.  
 Features: distinctive chimney,  
 Queen Anne window, Queen  
 Anne porch, bay window,  
 sidelights, distinctive door,  
 Colonial Revival porch, cornice  
 brackets, applied woodwork,  
 porte cochere, transom, distinc-  
 tive interior.  
 b. Carriage Barn, c.1880  
 Features: cornice brackets, round  
 arch window, cupola, peaked  
 entry lintel.  
 c. Shed, c.1880  
 d. Springhouse, c.1880  
 Wood shingle, mansard roof,  
 1 story.  
 Features: shinglework.  
 e. Playhouse, c.1900  
 Gable roof, 1 story.  
 Features: distinctive interior,  
 shinglework, peaked lintelboards.  
 Listed in the National Register  
 of Historic Places

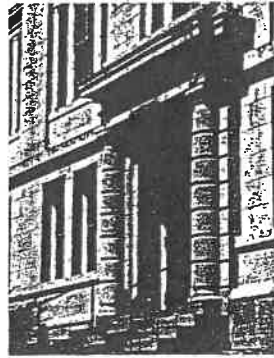
**42 House, c.1880**  
 Gable roof, 1½ stories.  
 Features: Queen Anne  
 porch.

- 43 Middlebury College  
 a. Dormitory, 1974  
 Non-contributing due to age.  
 b. Dormitory, 1974  
 Non-contributing due to age.  
 c. Dining Hall, 1970  
 Non-contributing due to age.  
 d. Dining Hall, 1970  
 Non-contributing due to age.  
 e. Dining Hall, 1970  
 Non-contributing due to age.  
 f. Observation Tower, 1937  
 g. Dormitory, 1970  
 Non-contributing due to age.  
 h. Dormitory, 1970  
 Non-contributing due to age.  
 i. Dormitory, 1970  
 Non-contributing due to age.  
 j. Dormitory, 1970  
 Non-contributing due to age.  
 k. Dormitory, 1911



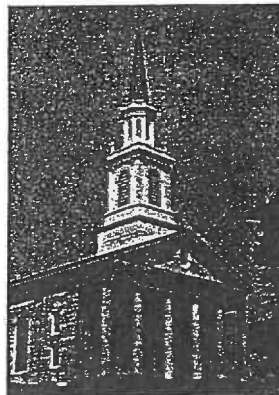
Architect/builder: Nicholas Albertson  
 Colonial Revival style, stone, hip roof, 3 1/2 stories.  
 Features: marble, sidelights, transom, splayed lintels, enriched cornice, gable fanlight, round arch window, beltcourse, distinctive dormers, quoins, keystones, entry entablature.  
 l. House, c.1860/1909  
 Gable roof, 2 1/2 stories.  
 Features: cornice brackets, Italianate porch, paneled corner pilasters, enriched cornice, bay window.  
 m. Garage, c.1925  
 Hip roof.  
 Features: historic garage door.  
 n. Dormitory, 1936  
 Architect/builder: Dwight J. Baum  
 Colonial Revival style, stone, gable roof, 3 1/2 stories.  
 Features: distinctive dormer, round window, beltcourse, Parapet, round arch window, entry fanlight.  
 o. School, 1951  
 Non-contributing due to age.  
 p. Dormitory, 1955  
 Non-contributing due to age.  
 q. Shopping Center, 1925  
 Architect/builder: James Laying Mills  
 Stucco, hip roof, 2 1/2 stories.  
 Features: towers, entry fanlight, transom, distinctive dormer, quoins, keystones, decorative brickwork.  
 r. Dormitory, 1963  
 Non-contributing due to age.  
 s. Theatre, 1957  
 Non-contributing due to age.  
 t. School, 1968  
 Non-contributing due to age.  
 u. Auditorium, 1965  
 Non-contributing due to age.

- v. School, 1901



Architect/builder: York & Sawyer  
 Neo-Classical Revival style, stone, hip roof, 3 stories.  
 Features: marble, entry entablature, beltcourse, distinctive chimney, entry columns, transom, enriched cornice, quoins, name inscription, full entablature.  
 w. School, 1968  
 Non-contributing due to age.  
 x. House, 1898  
 Tudor Revival style, brick, gable roof, 2 1/2 stories.  
 Features: bay window, rafter tails, distinctive chimney.  
 y. Duplex, c.1910  
 Colonial Revival style, hip roof, 2 1/2 stories.  
 Features: sidelights, distinctive dormer, bay window, Colonial Revival porch, distinctive chimney.  
 z. House, c.1880  
 Queen Anne style, gable roof, 2 1/2 stories.  
 Features: sidelights, applied woodwork, gable fan, Queen Anne window, rafter tails, porch, balcony.  
 aa. House, 1826  
 Vernacular-Greek Revival style, Classic Cottage.  
 Features: paneled entry pilasters, entry entablature, bargeboard, peaked lintelboards.  
 bb. House, c.1935  
 Colonial Revival style, jerkinhead roof, 2 1/2 stories.  
 Features: Colonial Revival porch.  
 cc. Duplex, c.1890  
 Colonial Revival style, hip roof, 2 1/2 stories.  
 Features: distinctive dormer, Colonial Revival porch, Queen Anne window.  
 dd. Dormitory, c.1925  
 Colonial Revival style, wood shingle, gable roof, 2 1/2 stories.  
 Features: gable fan, entry entablature, entry pilasters, distinctive door, distinctive chimney, Colonial Revival style.  
 ee. Dormitory, c.1920  
 Colonial Revival style, stone, gambrel roof, 2 1/2 stories.  
 Features: limestone, entry pilasters, gable fanlight, parapet.  
 ff. Field House, 1949  
 Non-contributing due to age.  
 gg. Field House, 1974  
 Non-contributing due to age.  
 hh. Dormitory, c.1929  
 Colonial Revival style, brick, gable roof, 2 1/2 stories.  
 Features: enriched cornice, quoins, keystone, monumental portico, entry pilasters, splayed lintels.  
 ii. Service Building, c.1960  
 Non-contributing due to age.  
 jj. Recreational Hall, 1912/1963  
 Architect/builder: W. Nicholas Albertson  
 Colonial Revival style, stone, hip roof, 2 stories.  
 Features: marble, entry pilasters, entry entablature, transom, enriched cornice, keystones, round arch window, beltcourse, name inscription.

- kk. Library, 1900/1962  
 Architect/builder: York & Sawyer  
 Neo-Classical Revival style, stone, hip roof, 2 stories.  
 Features: marble, recessed porch, quoins, entry entablature, entry columns.  
 ll. School, 1860/1864  
 Stone, gable roof, 3 1/2 stories.  
 Features: limestone, sidelights, entry columns, entry entablature, gable fanlight, beltcourse, marble, round window.  
 mm. Chapel, 1836  
 Architect/builder: Laomi Baldwin  
 Greek Revival style, stone, gable roof, 4 stories.  
 Features: limestone, quoins, granite, transom, distinctive interior, sidelights, weathervane, beltcourse, clock, belfry, central tower.  
 Recorded in the *Historic American Buildings Survey*  
 nn. School, 1816  
 Federal style, stone, gable roof, 4 stories.  
 Features: parapet, limestone, lintels, marble, quoins, gable fanlight, porch, sidelights, reveals, entry columns.  
 Recorded in the *Historic American Buildings Survey*  
 oo. School, 1912  
 Architect/builder: W. Nicholas Albertson  
 Colonial Revival style, stone, hip roof, 3 stories.  
 Features: beltcourse, Colonial Revival porch, enriched cornice, keystone, lintels, rustication, marble, round arch window, splayed lintels.  
 pp. School, 1941  
 Architect/builder: John Muller  
 Colonial Revival style, stone, gable roof, 3 1/2 stories.  
 Features: limestone, parapet, distinctive door, entry fanlight, entry columns, round window, name inscription.  
 qq. School, 1940  
 Architect/builder: John Muller  
 Colonial Revival style, stone, hip roof, 4 1/2 stories.  
 Features: limestone, beltcourse, distinctive dormer, round window, enriched cornice, belfry, transom, entry pilasters.  
 rr. House, c.1880  
 Gable roof, 2 1/2 stories.  
 Features: paneled corner pilasters, Queen Anne porch, cornice brackets, cornice caps.  
 ss. Student Center, 1960  
 Non-contributing due to age.  
 tt. Chapel, 1916



Architect/builder: Allen & Collins  
 Colonial Revival style, stone, gable roof, 2 stories.  
 Features: marble, monumental portico, paneled corner pilasters, round window, keystone, reveals, name inscription, round arch window, entry entablature, belfry, weathervane, Palladian window.

- uu. Dormitory, 1916  
 Architect/builder: Rossiter & Muller  
 Colonial Revival style, brick, hip roof, 4 1/2 stories.  
 Features: distinctive dormer, beltcourse, enriched cornice, belfry, keystone, round arch window.  
 vv. Dormitory, 1957  
 Non-contributing due to age.  
 ww. House, c.1910  
 Gable roof, 2 1/2 stories.  
 Features: sidelights, porch.  
 xx. Garage, c.1920  
 Features: historic garage door.  
 yy. House, c.1920  
 Hip roof, 1 1/2 stories.  
 Features: distinctive dormer.  
 zz. House, c.1950  
 Non-contributing due to age.  
 aaa. Garage, c.1950  
 Non-contributing due to age.  
 bbb. House, c.1950  
 Non-contributing due to age.  
 ccc. Garage, c.1930  
 Hip roof.  
 Features: historic garage door.  
 ddd. House, c.1870  
 Gable roof, 1 1/2 stories.  
 Features: Queen Anne porch.  
 44 House, c.1920  
 Foursquare.  
 Features: porch, distinctive door.  
 45 Duplex, c.1880  
 Gable roof, 2 stories.  
 Features: cornice brackets, unusual window, distinctive door.  
 Related carriage barn.  
 Features: cupola.  
 46 School, 1940  
 Vernacular-Colonial Revival style, brick, flat roof, 2 1/2 stories.  
 Features: date inscription, name inscription, transom, decorative brickwork.  
 47 House, c.1860  
 Gable roof, 1 1/2 stories.  
 Features: peaked lintelboards, distinctive door, full entablature.  
 Related garage.  
 Features: unusual window.  
 48 House, c.1870  
 Gable roof, 2 1/2 stories.  
 Features: Colonial Revival porch.  
 Related garage.  
 Features: historic garage door.  
 49 House, c.1860  
 Classic Cottage.  
 Features: Queen Anne porch.  
 50 House, c.1925  
 Foursquare, 1 1/2 stories.  
 Features: distinctive dormer, rafter tails, porch.  
 Related shed, shed.  
 51 House, 1891  
 Architect/builder: Oliver Severance  
 Wood shingle, gable roof, 2 stories.  
 Features: Colonial Revival porch, rafter tails, peaked lintelboards, unusual window.  
 Related garage.  
 52 Warehouse, c.1900  
 Gable roof, 1 1/2 stories.  
 Features: bay window.

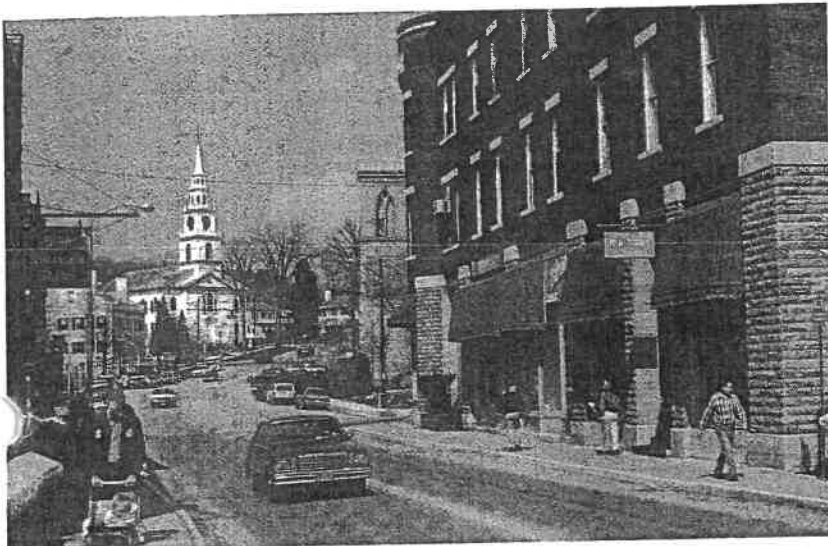
## MIDDLEBURY VILLAGE HISTORIC DISTRICT

*Listed in the National Register of Historic Places*

*Middlebury village developed around a central green in a radial pattern during the first third of the nineteenth century as the county seat and commercial center of a prosperous agricultural region. Later in the century new commercial and industrial ventures developed that carried the community into the twentieth century. A wealth of Federal, Italianate, French Second Empire, Queen Anne, and Colonial Revival style architecture from these periods combine to create the rich historic villagescape of Middlebury today.*



*South Pleasant Street*



*Main Street*



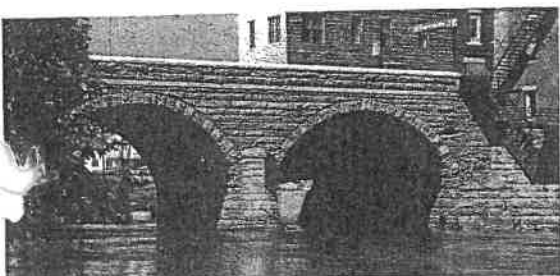
*(A231, 1822/c.1880)*



*Masonic Hall (A159, 1823) and Addison County Courthouse (A160, 1883)*



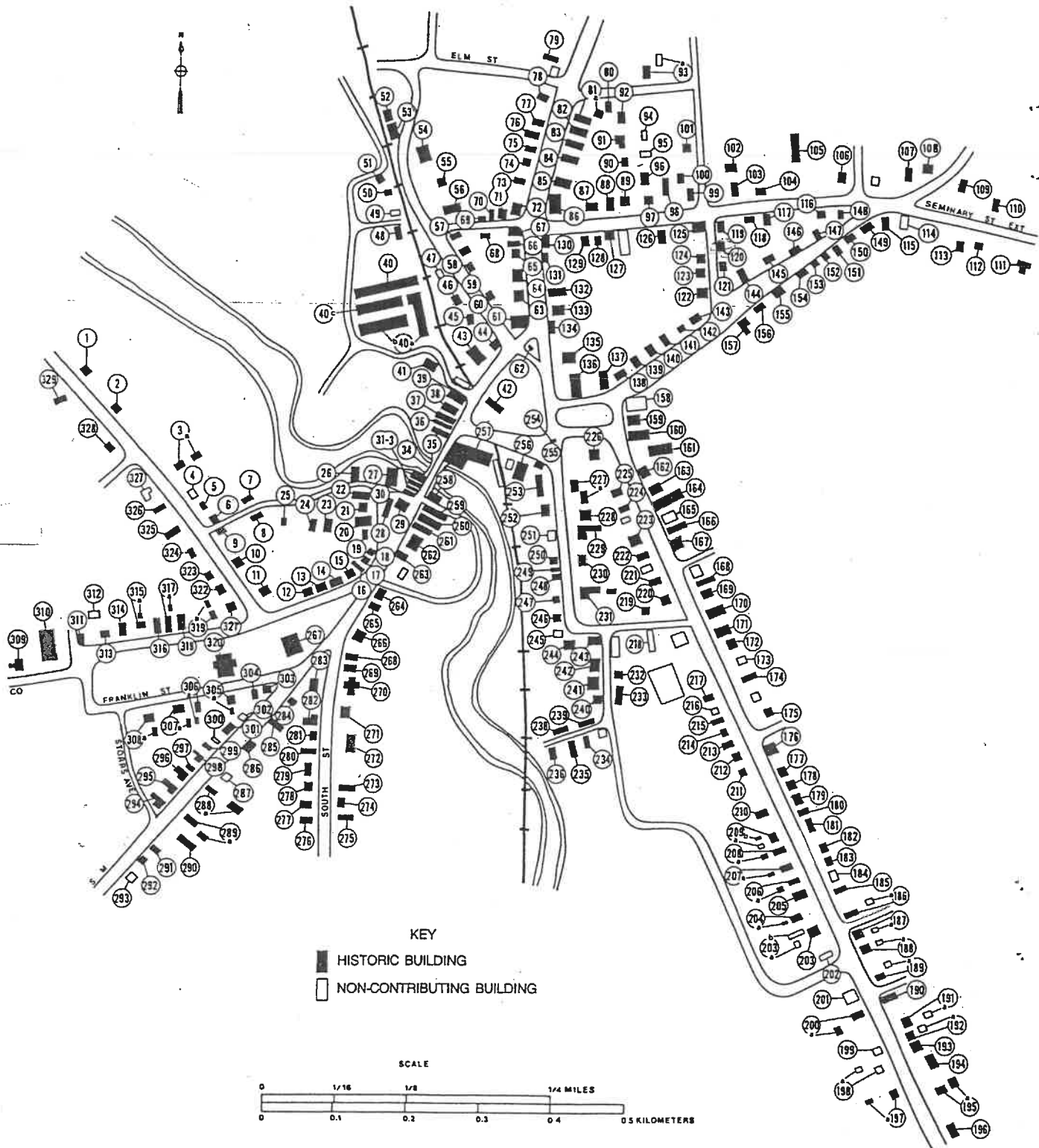
*(A84, c.1930)*



*Battell Bridge (A34, 1892)*

# A MIDDLEBURY VILLAGE HISTORIC DISTRICT MAP

Listed in the National Register of Historic Places  
(Sites correspond to Register listing that follows.)



**MIDDLEBURY  
VILLAGE  
HISTORIC DISTRICT**  
*Listed in  
the National Register  
of Historic Places*

**A1 House, 1818**  
Architect/builder: Jonathan Hagar  
Cape Cod.  
Features: central chimney, distinctive chimney, transom, entry pilasters, entry entablature.

**A2 House, 1818/c.1850**  
Architect/builder: Jonathan Hagar  
Vernacular-Gothic Revival style, Cape Cod.  
Features: Gothic Revival porch, bargeboard, sidelights.

**A3 House, c.1870/c.1900**  
Gable roof, 2.5 stories.  
Features: round arch window, Queen Anne porch, bay window.

**A3a Carriage Barn, c.1890**  
Features: cupola, Gothic wall dormer.

**A4 House, c.1960**  
Non-contributing due to age.

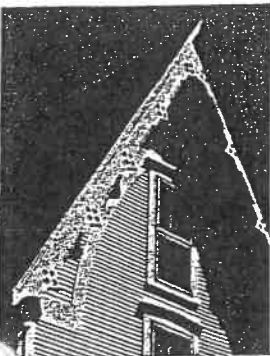
**A5 House, c.1885**  
Jerkinhead roof, 2.5 stories.  
Features: Queen Anne porch, Colonial Revival porch.

**A6 House, c.1840**  
Gable roof, 2.5 stories.  
Features: Queen Anne porch.

**A7 House, c.1830**  
Architect/builder: Benjamin Laurence.  
Gable roof, 1.5 stories.

**A8 House, 1868**  
Gable roof, 2.5 stories.  
Features: fieldstone, transom, porch.

**A9 House, c.1885**



Gable roof, 2.5 stories.  
Features: bargeboard, cornice brackets, peaked lintelboards, bay window, applied woodwork, transom.

**A10 House, 1809**  
Georgian plan.  
Features: sidelights, transom, paneled entry pilasters, porch, distinctive chimney.

**A11 House, 1873**  
French Second Empire style, mansard roof, 2.5 stories.  
Features: distinctive dormer, door hood, enriched cornice, cornice brackets, cornice caps, paneled corner pilasters, enriched frieze, Italianate porch, bay window.

**A12 House, c.1870**  
Gothic Revival-Italianate style, gable roof, 1.5 stories.  
Features: cornice brackets, Gothic wall dormer, hood molding, porch, distinctive chimney, round arch window.

**A13 Store, c.1810**  
Gable roof, 2.5 stories.

**A14 House, c.1810**  
Federal style, brick, Georgian plan, hip roof.  
Features: marble, peaked lintelboards, beltcourse, cornerblocks, sidelights, entry pilasters, entry fan.

**A15 Warehouse, 1815**  
Federal style, brick, gable roof, 3 stories.  
Features: entry fanlight, parapet, splayed lintels, marble.

**A16 Gas Station, c.1920**  
Vernacular-Colonial Revival style, brick, gable roof, 1 1/2 stories.  
Features: gable fanlight, Colonial Revival storefront.

**A17 House, 1804**  
Federal style, brick, Georgian plan.  
Features: distinctive chimney, marble, splayed lintels, enriched cornice, Palladian window, gable fanlight, entry fanlight, door hood, cornice caps, reveals, sidelights.

**A18 Store, 1863**  
Italianate style, brick, flat roof, 3 stories.  
Features: lintels, marble, carrara glass, quions, enriched cornice, cornice brackets.

**A19 House, 1829**  
Federal-Greek Revival style, brick, Georgian plan, 3 stories.  
Features: marble, lintels, gable fan, enriched cornice, Greek Revival porch, Greek Revival porch, sidelights, parapet, distinctive chimneys, distinctive door.

**A20 Duplex, 1801/1891**  
Vernacular-Italianate style, flat roof, 3 stories.  
Features: cornice brackets, full entablature, paneled entry pilasters, entry entablature, distinctive door.

**A21 House, 1799/1923**  
Wood shingle, gable roof, 1 1/2 stories.  
Features: sidelights.

**A22 Mill, 1837/c.1875**  
Gable roof, 3 1/2 stories.  
Features: marble, monitor.

**A23 House, c.1860**  
Gable roof, 1 1/2 stories.  
Features: kneewall window.

**A24 House, c.1840**  
Sidehall plan, 1 1/2 stories.  
Features: porch, marble.

**A25 House, c.1860**  
Gable roof, 1 1/2 stories.

**A26 Mill, c.1840**  
Stone, gable roof, 4 stories.  
Features: lintels, hoist.

**A27 Mill, 1903**  
Gable roof, 1 1/2 stories.

**A28 Warehouse, c.1875**  
Stucco, gable roof, 2 stories.  
Features: decorative rafter tails, hoist.

**A29 Commercial Block, 1903**  
Brick, gable roof, 1 story.  
Features: lintels, marble, original storefront.

**A30 Commercial Block, 1903**  
Brick, flat roof, 2 stories.  
Features: round arch window, granite, enriched cornice, hood molding.

**A31 Commercial Block, 1903**



Stone, flat roof, 2 stories.  
Features: marble, lintels, rustication, name inscription, date inscription.

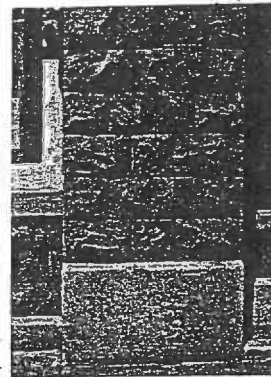
**A32 Commercial Block, 1903-1909**  
Brick, flat roof, 2 stories.  
Features: decorative brickwork, quions, distinctive door, keystone, marble, name inscription.

**A33 Commercial Block, 1931**  
Commercial Style, brick, flat roof, 2 stories.  
Features: stepped parapet, date inscription, name inscription, marble, Chicago windows.

**A34 Bridge, 1892**  
Features: date inscription, name inscription, granite, marble.

**A35 Commercial Block, 1892**  
Architect/builder: Clinton Smith  
Pressed stone, flat roof, 2 stories.  
Features: door hood.

**A36 Commercial Block, 1892**



Commercial Style, brick, flat roof, 2 stories.  
Features: lintels, beltcourse, decorative brickwork, granite, marble.

**A37 Commercial Block, 1900**  
Brick, flat roof, 2 stories.  
Features: lintels, granite, decorative brickwork, rustication, original storefront, distinctive door.

**A38 Bank Building, 1910**  
Architect/builder: Frank L. Austin  
Neo-Classical Revival style, brick, flat roof, 1 story.  
Features: name inscription, entry columns, enriched cornice, beltcourse, date inscription, entry pediment.

**A39 Commercial Block, 1883**  
Architect/builder: Smith & Allen  
Queen Anne style, brick, flat roof, 3 stories.  
Features: original storefront, stained glass, cornice arcading, enriched cornice, terra cotta, keystones, round arch window, segmental arch windows, marble, parapet, beltcourse, decorative brickwork.

**A40 Industrial Building, 1901**  
Stone, gable roof, 1 story.  
Features: marble, lintels.

**A40a Industrial Building, c.1901**  
Gable roof, 1 story.  
Features: marble.

**A40b Warehouse, c.1901**  
Shed roof, 1 story.  
Features: marble.

**A40c Warehouse, c.1901**  
Stone, shed roof, 1 story.  
Features: marble.

## 160 MIDDLEBURY VILLAGE

**A41 Mill, 1836**  
Stone, gable roof,  
3 1/2 stories.  
Features: limestone, marble.

**A42 Church, 1827**  
Gothic Revival style, stone,  
gable roof, 1 story.  
Features: central tower,  
belfry, distinctive door, entry  
pilasters, tracery, applied  
woodwork, stained glass,  
reveals, cornerblocks, pointed  
arch windows, distinctive  
interior.

**A43 Post Office, 1933**  
Architect/builder: James A.  
Wetmore  
Neo-Classical Revival style,  
brick, hip roof, 1 1/2 stories.  
Features: entry columns,  
enriched frieze, enriched  
cornice, quions, marble  
lintels, name inscription,  
date inscription, transom,  
leaded glass.

**A44 House, 1816**  
Federal style, brick,  
Georgian plan.  
Features: sidelights, entry  
fanlight, door hood, parapet,  
splayed lintels,  
enriched frieze, gable  
fanlight, distinctive door,  
distinctive interior, fencing.  
*Recorded in the Historic  
American Buildings Survey*

**A45 Fire Station,  
c.1930/c.1950**  
Colonial Revival style, brick,  
flat roof, 2 stories.  
Features: entry pilasters,  
sidelights, transom, entry  
entablature.

**A46 House, 1787**  
Architect/builder: Simeon  
Dudley  
I-House.  
Features: porch, fencing,  
historic move.

**A47 Bank Building, c.1965**  
Non-contributing due to age.

**A48 House, 1901**  
Colonial Revival style, stone,  
gambrel roof, 1 1/2 stories.  
Features: rustication, granite,  
date inscription, lintels.

**A49 House, c.1965**  
Non-contributing due to age.

**A50 House, c.1870**  
French Second Empire style,  
mansard roof, 2 1/2 stories.  
Features: cornice brackets,  
distinctive chimney, distinc-  
tive dormers, porch.

**A51 House, c.1840**  
Greek Revival style, sidehall  
plan, 1 1/2 stories.  
Features: full entablature,  
porch, cornerblocks, paneled  
entry pilasters.

**A52 Baggage House, c.1890**  
Vernacular-Stick Style, hip  
roof, 1 story.  
Features: brick.

**A53 Railroad Station, 1891**  
Vernacular-Shingle Style  
style, hip roof, 1 story.  
Features: brick, cupola, round  
arch window, rafter tails.

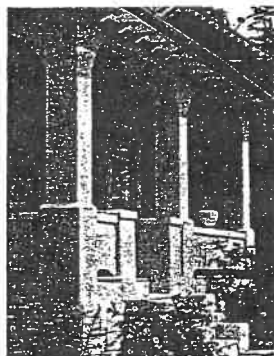
**A54 House, 1862**  
Architect/builder: Oliver  
Severance  
Gable roof, 1 1/2 stories.  
Features: Gothic wall dormer.

**A55 Store, c.1910**  
Hip roof, 1 story.  
Features: rafter tails, original  
storefront.

**A56 House, 1911**  
Colonial Revival style, hip  
roof, 2 1/2 stories.  
Features: Colonial Revival  
porch, side tower, bay  
window, distinctive chimney,  
distinctive dormer.

**A57 House, c.1855**  
Gable roof, 1 1/2 stories.  
Features: Queen Anne  
porch, cornice brackets,  
keystone, Italianate porch.

**A58 House, c.1920**



Bungalow style, stucco, gable  
roof, 1 1/2 stories.  
Features: bay window,  
decorative rafter tails,  
distinctive chimney, rustica-  
tion, distinctive dormer,  
Bungalow porch.

**A59 House, c.1820**  
I-House.  
Features: entry entablature,  
bargeboard.

**A60 House, c.1850**  
Gable roof, 1 1/2 stories.

**A61 Church, 1806-1809**  
Architect/builder: Lavius  
Fillmore  
Federal style, gable roof,  
2 stories.

Features: central tower,  
finials, clock, Palladian  
window, fluted entry  
pilasters, distinctive door,  
keystone, gable fanlight,  
round arch window, quions,  
entry fanlight, belfry, full  
pediment.

*Recorded in the Historic  
American Buildings Survey*

**A62 Emma Willard  
Monument**  
Features: marble.

**A63 House, c.1800/c.1920**  
Stone veneer, gable roof,  
2 stories.  
Features: enriched cornice,  
gable fanlight, distinctive  
door, distinctive chimney.

**A64 House, c.1820/c.1870**  
Georgian plan, hip roof.  
Features: transom, sidelights,  
cornice brackets, enriched  
cornice, paneled corner  
pilasters, porch.

**A65 House, 1912**  
Colonial Revival style, hip  
roof, 2 stories.  
Features: Colonial Revival  
porch, leaded glass, distinc-  
tive dormer.

**A66 House, c.1865**  
Italianate style, sidehall plan,  
2 1/2 stories.  
Features: bay window,  
peaked entry lintel, peaked  
lintelboards, cornice  
brackets.

**A67 House, c.1820**  
Stucco, gable roof,  
2 1/2 stories.  
Features: enriched cornice,  
round window, Queen Anne  
porch.

**A68 House, c.1870**  
Tri-Gable Ell, 2 1/2 stories.

**A69 House, c.1796**  
Gable roof, 2 1/2 stories.  
Features: distinctive door.

**A70 House, c.1880**  
Gable roof, 2 1/2 stories.

**A71 House, c.1880**  
Gable roof, 1 1/2 stories.  
Features: Queen Anne  
porch.

**A72 House, c.1850**  
Gable roof, 1 1/2 stories.  
Features: Queen Anne  
porch.

**A73 House, c.1840**  
Vernacular-Greek Revival  
style, Classic Cottage.  
Features: sidelights, entry  
entablature, entry pilasters,  
Queen Anne porch, distinc-  
tive door.

**A74 House, c.1870**  
Tri-Gable Ell, 2 1/2 stories.  
Features: Colonial Revival  
porch, label lintels,  
sidelights, distinctive door.

**A75 House, 1894**  
Sidehall plan, 2 1/2 stories.  
Features: cornice caps,  
shinglework, porch.

**A76 House, c.1860**



Architect/builder: Oliver  
Severance  
Greek Revival style, gable  
roof, 2 1/2 stories.  
Features: paneled corner  
pilasters, full entablature,  
porch.

**A77 House, 1880**  
Vernacular-Italianate style,  
sidehall plan, 2 1/2 stories.  
Features: cornice brackets,  
Colonial Revival porch,  
peaked lintelboards, distinc-  
tive door.

**A78 House, 1872**  
Architect/builder: Oliver  
Severance  
French Second Empire style,  
mansard roof, 2 1/2 stories.  
Features: Italianate porch,  
bay window, cornice  
brackets, segmental arch  
window, distinctive door,  
distinctive dormers.

**A79 House, 1858**  
Architect/builder: Oliver  
Severance  
Greek Revival style,  
Georgian plan.  
Features: paneled corner  
pilasters, full entablature,  
enriched frieze, Greek  
Revival porch, sidelights,  
transom.

**A80 House, c.1850**  
Greek Revival style, sidehall  
plan, 1 1/2 stories.  
Features: paneled entry  
pilasters, entry entablature,  
paneled corner pilasters,  
sidelights.

**A81 House, c.1890**  
Colonial Revival style, gable  
roof, 2 1/2 stories.  
Features: stained glass, Palla-  
dian window, Colonial  
Revival porch, unusual  
window, bay window,  
distinctive door, distinctive  
dormers, porte cochere,  
finials, distinctive chimney.

**A81a Carriage Barn, c.1870**  
Features: cupola, peaked  
lintelboards, peaked entry  
lintel.

**A82 House, 1872**  
Gable roof, 2 1/2 stories.  
Features: Queen Anne  
porch, gazebo, distinctive  
door.

**A83 House, 1860**  
Greek Revival style, sidehall plan, 1½ stories.  
Features: sidelights, entry entablature, entry pilasters, porch.

**A84 House, c.1930**  
Bungalow style, gable roof, 1½ stories.  
Features: Bungalow porch, rafter tails, cornice brackets, distinctive chimney, bay window.

**A85 House, c.1870**  
Gable roof, 2½ stories.  
Features: Queen Anne porch, bay window, round window, cornice caps.

**A86 Church, 1892**  
Architect/builder: C. Smith, Valk & Sons  
Queen Anne style, brick, gable roof, 1 story.  
Features: pointed arch window, stained glass, side tower, finials, round arch window, porch, enriched cornice, distinctive door, belfry, stickwork, applied woodwork.

**A87 House, 1810**  
Federal style, Georgian plan.  
Features: sidelights, transom, entry entablature, entry pilasters, distinctive door, bay window, gable fanlight.

**A88 House, c.1860**  
Sidehall plan, 2½ stories.  
Features: Queen Anne porch.

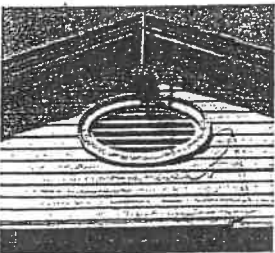
**A89 House, 1808**  
Georgian plan.  
Features: entry pilasters.

**A90 House, c.1880**  
Gable roof, 2½ stories.

**A91 House, c.1965**  
Non-contributing due to age.

**A92 House, c.1830**  
Cape Cod.  
Features: Queen Anne porch, sidelights, central chimney, distinctive door.

**A93 House, 1815**



Architect/builder: Lavius Fillmore  
Federal style, gable roof, 2½ stories.  
Features: entry fanlight, enriched cornice, unusual window, transom, Colonial Revival porch.

**A93a Carriage Barn, 1885**  
Architect/builder: Clinton Smith  
Features: cupola, applied woodwork.

**A94 House, c.1965**  
Non-contributing due to age.

**A95 House, c.1965**  
Non-contributing due to age.

**A96 House, c.1870**  
Georgian plan.  
Features: porch, distinctive door.

**A97 House, 1813**  
Federal style, Georgian plan.  
Features: distinctive chimney, entry pilasters, entry entablature, transom, sidelights, Queen Anne porch.

**A98 House, c.1825/c.1850**  
Greek Revival style, sidehall plan, 2½ stories.  
Features: sidelights, transom, entry entablature, entry pilasters, distinctive door.

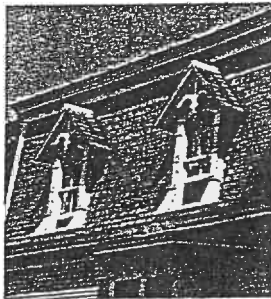
**A99 House, c.1875**  
Gable roof, 2½ stories.  
Features: distinctive chimney, Italianate porch, marble, distinctive dormer.

**A100 House, 1798**  
Federal style, Georgian plan.  
Features: entry pilasters, entry entablature, central chimney, distinctive door.

**A101 House, c.1850**  
Gable roof, 1½ stories.

**A102 Carriage Barn, c.1880**  
Features: cornice brackets, gable fan, peaked lintelboards.

**A103 House, c.1820/c.1865**



Vernacular-French Second Empire style, gable roof, 2½ stories.  
Features: distinctive dormer, Queen Anne porch.

**A104 School, 1823**  
Federal style, brick, Georgian plan.  
Features: splayed lintels, marble, sidelights, transom, gable fan.

**A105 House, 1836**



Greek Revival style, brick, sidehall plan, 2½ stories.  
Features: sidelights, transom, fencing, gable fan, lintels, marble, gable fanlight, porch, distinctive chimney, fencing.

**A106 House, 1879**  
Architect/builder: Clinton Smith  
Vernacular-Italianate style, sidehall plan, 2½ stories.  
Features: door hood, peaked lintelboards, round window, cornice brackets.

**A107 House, 1881**  
Architect/builder: Clinton Smith  
Queen Anne style, Tri-Gable Ell, 2 stories.  
Features: side tower, bay window, bargeboard, distinctive lintelboards, Italianate porch, triangular arch window, cornice brackets, peaked lintelboards, round arch window, distinctive door, polychrome slate.

**A108 House, 1871**  
Gothic Revival style, pavilion with ells.  
Features: bargeboard, round arch window, peaked lintelboards, bay window, distinctive dormer, Gothic Revival porch, applied woodwork, round window, paneled corner pilasters.

**A109 House, 1882**  
Architect/builder: Clinton Smith  
Queen Anne-Stick Style, gable roof, 2½ stories.  
Features: bay window, round arch window, Italianate porch, enriched cornice, distinctive dormer, cornice brackets, door hood, enriched frieze, applied woodwork.

**A110 House, c.1810/c.1910**  
Architect/builder: Lavius Fillmore  
Federal style, Georgian plan.  
Features: entry fanlight, sidelights, Palladian window, distinctive dormer, enriched cornice, unusual window, gable fanlight, Colonial Revival porch, keystones, reveals, distinctive door, recessed porch.

**A111 Shop, 1800/1840**  
Vernacular-Greek Revival style, gable roof, 2½ stories.  
Features: sidelights, transom, triangular window.

**A112 House, c.1880**  
Stucco, gable roof, 2½ stories.

**A113 House, c.1880**  
Sidehall plan, 2½ stories.  
Features: sidelights, transom, peaked entry lintel, peaked lintelboards, stained glass.

**A114 House, c.1960**  
Non-contributing due to age.

**A115 House, c.1870**  
Gable roof, 1½ stories.  
Features: porch.

**A116 House, c.1850**  
Gable roof, 1½ stories.

**A117 House, c.1830/c.1890**  
Vernacular-Colonial Revival style, gable roof, 2½ stories.  
Features: Palladian window, round arch window, cornice caps, Colonial Revival porch, distinctive door, shinglework; corner pilasters, peaked entry lintel.

**A118 House, c.1870**  
Italianate style, Georgian plan.  
Features: Italianate porch, distinctive door, cornice caps, distinctive chimney, bay window, cornice brackets.

**A119 House, c.1890**  
Stucco, gable roof, 1½ stories.  
Features: Queen Anne porch.

**A120 House, c.1810**  
Cape Cod.  
Features: Colonial Revival porch, cornice caps.

**A121 House, c.1845/c.1870**  
Gable roof, 1½ stories.  
Features: Queen Anne porch.

**A122 House, c.1810**  
Gable roof, 2½ stories.

**A123 House, c.1820**  
Gable roof, 1½ stories.  
Features: kneewall window.

**A124 House, 1815**  
Vernacular-Federal style, Georgian plan.  
Features: transom, sidelights, Italianate porch.

**A125 House, c.1804**  
Architect/builder: William Baker  
Hip roof, 2 stories.  
Features: distinctive chimney, Colonial Revival porch, distinctive door.

**A126 Parsonage, 1887.**  
 Architect/builder: Clinton Smith  
 Italianate Queen Anne style, hip roof, 2½ stories.  
 Features: stained glass, transom, shinglework, cornice brackets, Queen Anne window, bay window, peaked lintelboards, distinctive dormers, distinctive door, Queen Anne porch.

**A127 House, 1793**  
 Georgian plan.  
 Features: cornice caps, transom, historic move.

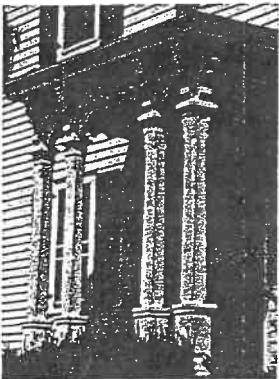
**A128 House, 1914**  
 Gable roof, 2½ stories.  
 Features: Colonial Revival porch.

**A129 House, 1914**  
 Stucco, gable roof, 2½ stories.  
 Features: Colonial Revival porch.

**A130 House, 1804**  
 Federal style, Georgian plan, hip roof.  
 Features: leaded glass, sidelights, transom, cornice caps, porch, distinctive door.

**A131 House, c.1803/c.1840**  
 Federal-Greek Revival style, Georgian plan.  
 Features: sidelights, transom, paneled entry pilasters, entry entablature, paneled corner pilasters, distinctive door, Queen Anne porch, iron cresting.

**A132 House, 1805**



Federal style, sidehall plan, 2½ stories.  
 Features: enriched cornice, unusual window, leaded glass, entry fanlight, Italianate porch, distinctive chimney, keystone, reveals.

**A133 House, c.1920**  
 Colonial Revival style, hip roof, 2½ stories.  
 Features: sidelights, transom.

**A134 House, c.1790**  
 Federal style, Georgian plan.  
 Features: leaded glass, enriched cornice, Colonial Revival porch, distinctive door, distinctive interior.

**A135 House, 1825/1881**  
 Federal/French Second Empire style, brick, Georgian plan, mansard roof.  
 Features: entry fanlight, entry columns, sidelights, splayed lintels, marble, distinctive chimney, bay window, enriched cornice, leaded glass, Colonial Revival porch, distinctive dormers, porte cochere.

**A136 Inn, 1826/1927**  
 Federal/Colonial Revival style, brick, gable roof, 3½ stories.  
 Features: entry fanlight, marble, Colonial Revival porch, enriched cornice, gable fanlight, parapet, bay window, splayed lintels, Palladian window.

**A137 Commercial Block, c.1940**  
 Brick, flat roof, 2 stories.

**A138 Jail, 1794/1812**  
 Vernacular-Federal style, gable roof, 2½ stories.  
 Features: sidelights, entry pilasters, distinctive door, Greek Revival porch.

**A139 House, c.1850**  
 Gable roof, 2½ stories.  
 Features: cornice caps.

**A140 House, 1847**  
 Sidehall plan, 2½ stories.  
 Features: corner pilasters.

**A141 Shop, 1932**  
 Gable roof, 1 story.

**A142 Shop, c.1810**  
 Stucco, gable roof, 1½ stories.  
 Features: Queen Anne porch.

**A143 Jail, c.1811/c.1845**  
 Architect/builder: Jabez Rogers  
 Federal/Greek Revival style, stone, Georgian plan.  
 Features: limestone, splayed lintels, granite, gable fanlight, sidelights, transom.

**A144 House, 1815/c.1840**  
 Federal/Greek Revival style, sidehall plan, 2½ stories.  
 Features: enriched cornice, unusual window, sidelights, transom, Greek Revival porch, gable fanlight.

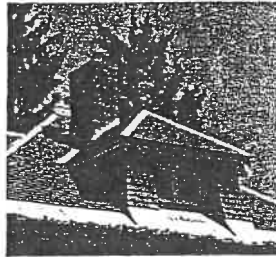
**A145 House, 1872**  
 Vernacular-Italianate style, Classic Cottage.  
 Features: paneled entry pilasters, paneled corner pilasters, distinctive door, peaked lintelboards, Italianate porch, Gothic wall dormer.

**A146 House, c.1810**  
 Gable roof, 2½ stories.  
 Features: porch.

**A147 House, c.1840**  
 Wood shingle, gable roof, 1½ stories.  
 Features: bay window.

**A148 House, c.1830/1925**  
 Colonial Revival style, gable roof, 2½ stories.  
 Features: porte cochere, enriched cornice, keystone, paneled corner pilasters, round window, Colonial Revival porch.

**A149 House, 1904**



Colonial Revival style, concrete block, hip roof, 2½ stories.  
 Features: lintels, bellcast, finials, distinctive dormer, rustication, stained glass, Colonial Revival porch.

**A150 House, 1929**  
 Vernacular-Colonial Revival style, hip roof, 2½ stories.  
 Features: Colonial Revival porch, distinctive dormer.

**A151 House, 1910**  
 Hip roof, 2½ stories.  
 Features: Colonial Revival porch, bay window.

**A152 House, 1862**  
 Architect/builder: Oliver Severance  
 Sidehall plan, 1½ stories.  
 Features: cornice caps.

**A153 House, c.1820**  
 Cape Cod.

**A154 House, c.1810**  
 Federal style, Georgian plan.  
 Features: gable fanlight, sidelights, paneled entry pilasters, distinctive door.

**A155 House, c.1815**  
 Gable roof, 2½ stories.  
 Features: sidelights, transom, porch.

**A156 House, 1934**  
 Cape Cod.

**A157 House, c.1890**  
 Colonial Revival style, gable roof, 2½ stories.  
 Features: distinctive dormer, transom, bay window, marble.

**A158 Bank Building, c.1970**  
 Non-contributing due to age.

**A159 Fraternal Hall, 1823**  
 Federal style, brick, gable roof, 3 stories.  
 Features: gable fanlight, splayed lintels, marble, keystone, distinctive chimney, name inscription, sidelights, transom.

**A160 Courthouse, 1883**  
 Architect/builder: Smith, Clinton  
 Queen Anne style, brick, gable roof, 2½ stories.  
 Features: transom, Italianate porch, side tower, distinctive dormer, cupola, finials, segmental arch windows, stained glass, decorative brickwork, distinctive lintels, Palladian window.

**A161 House, c.1850**  
 Gable roof, 2½ stories.

**A162 House, 1825**  
 Georgian plan.

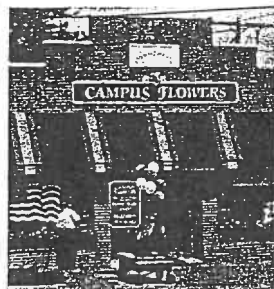
**A163 House, c.1825/c.1875**  
 Vernacular-French Second Empire style, mansard roof, 2½ stories.  
 Features: polychrome slate, Italianate porch, cornice brackets, enriched cornice, bay window, distinctive lintelboards, side tower, distinctive dormers, Colonial Revival porch.

**A164 House, 1912**  
 Wood shingle, gable roof, 2½ stories.  
 Features: recessed porch, sidelights, distinctive door, decorative rafter tails.

**A165 House, 1796**  
 Non-contributing due to alterations.

**A166 Hotel, 1811**  
 Gable roof, 3½ stories.  
 Features: door hood, distinctive door.

**A167 Commercial Block, c.1930**



Commercial Style, brick veneer, gable roof, 1 story.  
 Features: parapet, glass brick.

**A168 House, c.1865**  
 Vernacular-Italianate style, sidehall plan, gable roof, 1½ stories.  
 Features: paneled corner pilasters, enriched frieze, cornice brackets, distinctive door, entry pilasters.

**A169 House, c.1810/1881**  
Vernacular-French Second Empire style, mansard roof, 1½ stories.  
Features: polychrome slate, central tower, distinctive dormer, wood cresting, distinctive lintelboards, cornice brackets, paneled corner pilasters, distinctive door, Colonial Revival porch.

**A170 Jail, 1846**  
Greek Revival style, brick, gable roof, 2½ stories.  
Features: sidelights, transom, entry entablature, entry pilasters, lintels, marble.

**A171 House, c.1820/c.1860**  
Sidehall plan, gable roof, 2½ stories.  
Features: door hood, distinctive chimney, distinctive door.

**A172 House, c.1860**  
Vernacular-Greek Revival style, Classic Cottage.  
Features: entry entablature, distinctive door.

**A173 House, c.1850**  
Non-contributing due to alterations.

**A174 House, c.1870**  
Vernacular-Italianate style, sidehall plan, 1½ stories.  
Features: cornice brackets, enriched cornice, bay window, Italianate porch, distinctive door.

**A175 House, c.1820/c.1880**  
Vernacular-Italianate style, Georgian plan.  
Features: bay window, distinctive chimney, gazebo, sidelights, entry pilasters, entry entablature, distinctive door, porch.

**A176 House, c.1835**  
Greek Revival style, Classic Cottage.  
Features: sidelights, transom, door hood, corner pilasters, round window.

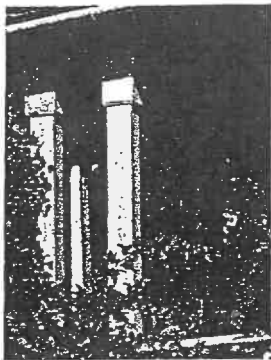
**A177 House, c.1875**  
Gable roof, 1½ stories.  
Features: Colonial Revival porch, cornice caps, Queen Anne window, distinctive door.

**A177a Garage, c.1930**  
Wood shingle.  
Features: historic garage door.

**A178 Duplex, c.1880**  
Georgian plan.  
Features: porch, balcony, distinctive door.

**A178a Garage, c.1940**  
Hip roof.

**A179 House, c.1890**



Gable roof, 2½ stories.  
Features: distinctive door, Colonial Revival porch.

**A179a Garage, c.1970**  
Non-contributing due to age.

**A180 House, c.1855**  
Gothic Revival style, Classic Cottage.  
Features: Gothic wall dormer, Queen Anne porch, bay window, porch.

**A180a Garage, c.1930**

**A181 House, c.1885**  
Queen Anne style, gable roof, 2½ stories.  
Features: leaded glass, transom, stained glass, Colonial Revival porch.

**A181a Carriage Barn, c.1885**

**A182 House, c.1868**  
Tri-Gable Ell, 2 stories.  
Features: marble, Italianate porch.

**A182a Carriage Barn, c.1900**

**A183 House, c.1850**  
Gable roof, 1½ stories.  
Features: porch, kneewall window.

**A184 House, c.1870**  
Non-contributing due to alterations.

**A185 House, c.1870**  
Sidehall plan, 1½ stories.  
Features: Queen Anne porch, marble, distinctive door.

**A186 House, c.1870**  
Sidehall plan, 2 stories.  
Features: Colonial Revival porch, kneewall window.

**A186a Garage, c.1950**  
Non-contributing due to age.

**A187 House, c.1870**  
Tri-Gable Ell, 1½ stories.  
Features: Queen Anne porch, distinctive door.

**A188 House, c.1865**  
Gable roof, 1½ stories.  
Features: porch.

**A189 House, c.1910**  
Colonial Revival style, gambrel roof, 2½ stories.

**A189a Garage, c.1910**  
Colonial Revival style, gambrel roof.  
Features: historic garage door.

**A189b Garage, c.1965**  
Non-contributing due to age.

**A190 House, c.1865**  
Gable roof, 2½ stories.  
Features: Queen Anne porch.

**A191 House, c.1875**  
Tri-Gable Ell, 2½ stories.  
Features: segmental arch window, distinctive lintelboards.

**A191a Carriage Barn, c.1875**  
Features: segmental arch window, distinctive lintelboards.

**A192 House, c.1865**  
Gable roof, 1½ stories.  
Features: porch.

**A192a Garage, c.1930**  
Hip roof.

**A193 House, c.1870**  
Italianate style, gable roof, 2½ stories.  
Features: cornice brackets.

**A194 House, c.1870**  
Tri-Gable Ell, 1½ stories.

**A195 House, c.1870**  
Sidehall plan, 2 stories.  
Features: recessed porch, sidelights, Colonial Revival porch, gable fan.

**A195a Carriage Barn, c.1890**

**A196 House, c.1860**  
Classic Cottage.  
Features: bay window, distinctive door.

**A197 House, c.1850**  
Gable roof, 2½ stories.  
Features: Queen Anne porch, distinctive door.

**A197a Garage, c.1920**

**A198 House, c.1955**  
Non-contributing due to age.

**A198a Garage, c.1960**  
Non-contributing due to age.

**A199 House, c.1945**  
Non-contributing due to age.

**A200 House, 1818**  
Sidehall plan, 2 stories.  
Features: entry pilasters, sidelights, gable fan.

**A200a Shed, c.1900**

**A201 Gas Station, c.1950**  
Non-contributing due to age.

**A202 House, c.1950**  
Non-contributing due to age.

**A203 House, c.1920**  
Foursquare.  
Features: Bungalow porch, door hood, distinctive dormer, distinctive door.

**A203a Shed, c.1950**  
Non-contributing due to age.

**A203b Garage, c.1970**  
Non-contributing due to age.

**A204 House, c.1870**  
Wood shingle, gable roof, 2½ stories.  
Features: distinctive door.

**A204a Carriage Barn, c.1900**

**A205 House, c.1885**  
Vernacular-Queen Anne style, gable roof, 2½ stories.  
Features: cornice brackets, bay window, gablescreen, Colonial Revival porch.

**A206 Duplex, c.1885**  
Vernacular-Queen Anne style, gable roof, 2½ stories.  
Features: bay window, cornice caps, Colonial Revival porch, distinctive door.

**A206a Carriage Barn, c.1890**

**A207 House, c.1885**  
Vernacular-Queen Anne style, gable roof, 2½ stories.  
Features: Colonial Revival porch, gablescreen, cornice caps, unusual window, distinctive door, bay window.

**A207a Garage, c.1925**  
Hip roof.  
Features: historic garage door.

**A208 House, c.1923**  
Vernacular-Colonial Revival style, stone, gable roof, 2½ stories.  
Features: bay window, distinctive chimney, Colonial Revival porch, granite.

**A208a Garage, c.1925**  
Hip roof.

**A209 House, 1912**



Colonial Revival style, gable roof, 2 stories.  
Features: sidelights, enriched cornice, Colonial Revival porch, bay window, Palladian window, distinctive chimney, gable fanlight, entry entablature.

**A209a Garage, c.1960**  
Non-contributing due to age.

**A209b Garage, c.1915**  
Hip roof.  
Features: historic garage door.

**A210 House, c.1860**  
Gable roof, 1½ stories.  
Features: Italianate porch, triangular window.

**A211 House, c.1860/1885**  
Gable roof, 2 stories.  
Features: door hood, unusual window, Colonial Revival porch.

**A212 House, c.1875**  
Italianate style, gable roof, 2½ stories.  
Features: round arch window, cornice brackets, Italianate porch, cornice caps, paneled corner pilasters, distinctive lintelboard, distinctive dormers, hood moldings.

**A213 House, c.1870**  
Gable roof, 1½ stories.  
Features: Colonial Revival porch.

**A214 House, c.1840**  
Vernacular-Greek Revival style, gable roof, 1¾ stories.  
Features: sidelights, entry pilasters, entry entablature, distinctive door, Colonial Revival porch.

**A215 House, c.1850**  
Gable roof, 1½ stories.  
Features: Bungalow porch.

**A216 House, c.1850**  
Non-contributing due to alterations.

**A217 House, c.1865**  
Gable roof, 1½ stories.  
Features: distinctive chimney, sidelights.

**A218 House, 1808**  
Architect/builder: David Page  
Federal style, gable roof, 2½ stories.  
Features: entry pilasters, transom, entry entablature, enriched frieze, gable fanlight, porch.

**A219 House, c.1860**  
Gable roof, 1½ stories.  
Features: kneewall window.

**A220 House, c.1840**  
Greek Revival style, gable roof, 1½ stories.  
Features: corner pilasters, entry pilasters, entry entablature, Colonial Revival porch.

**A221 House, c.1900**  
Colonial Revival style, hip roof, 2½ stories.  
Features: distinctive dormer, Colonial Revival porch, sidelights, distinctive door.

**A222 House, c.1880**  
Vernacular-Queen Anne style, gable roof, 2½ stories.  
Features: transom; stained glass, unusual window, unusual window, Queen Anne porch, bay window.

**A223 House, c.1885**  
Vernacular-Queen Anne style, gable roof, 2½ stories.  
Features: Palladian window, Queen Anne porch, bay window, Italianate porch, cornice caps.

**A224 Shop, c.1827/c.1870**  
Gable roof, 1½ stories.  
Features: cornice brackets.

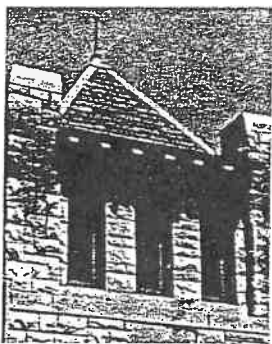
**A225 House, c.1870**  
Gable roof, 2½ stories.  
Features: cornice brackets.

**A226 House, 1802/c.1835**  
Architect/builder: Samuel Coe  
Federal style, Georgian plan, hip roof.  
Features: beltcourse, enriched frieze, Greek Revival porch, enriched cornice, fretwork, entry entablature, entry fanlight, distinctive chimney, sidelights, transom, monitor.  
*Recorded in the Historic American Buildings Survey*

**A227 House, 1803/c.1875**  
Federal/Italianate style, Georgian plan.  
Features: cornice brackets, transom, door hood, distinctive door, enriched cornice, enriched frieze, cornice caps, bay window, distinctive lintelboard, distinctive chimney.

**A227a Carriage Barn, c.1875**  
Features: cupola.

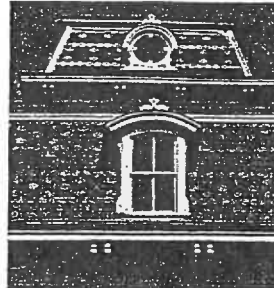
**A228 Church, 1905**



Architect/builder: W. R. B. Wilcox  
Romanesque style, stone, gable roof, 2½ stories.  
Features: side tower, belfry, stained glass, enriched cornice, lintels, segmental arch window, distinctive door, finials, beltcourse, rafter tails.

**A229 House, 1801/c.1840**  
Federal/Greek Revival style, Georgian plan.  
Features: enriched frieze, sidelights, transom, Greek Revival porch, distinctive chimney, gable fan.

**A230 House, c.1865**



French Second Empire style, mansard roof, 2½ stories.  
Features: polychrome slate, sidelights, transom, bay window, belvedere, distinctive dormer, cornice brackets, Italianate porch, Colonial Revival porch, round arch windows, segmental arch windows, gazebo.

**A231 House, 1822/c.1880**  
Federal/Italianate style, Georgian plan.  
Features: round window, cornice brackets, entry fanlight, sidelights, Italianate porch, gable fan, distinctive door, bay window, distinctive chimney.

**A231a Carriage Barn, c.1870**  
Greek Revival style, board and batten.  
Features: Gothic wall dormer, cupola, peaked lintelboards, peaked entry lintel, bargeboard.

**A232 House, 1940**  
Vernacular-Bungalow style, gable roof, 1½ stories.  
Features: broken pediment.

**A233 House, c.1820**  
Federal style, Georgian plan.  
Features: sidelights, entry fanlight, distinctive chimney.

**A234 House, c.1860**  
Federal style, gable roof, 1½ stories.  
Features: distinctive door.

**A235 Barn, 1807/1853**  
Architect/builder: David Page  
Sidehall plan, 2½ stories.  
Features: sidelights, transom, bay window.

**A236 House, c.1830**  
Gable roof, 2½ stories.

**A237 Bridge, 1893**  
Features: Warren truss.

**A238 House, 1807**  
Architect/builder: David Page  
Cape Cod.  
Features: sidelights, cornice caps, entry pilasters.

**A239 House, c.1807/c.1850**  
Gable roof, 1½ stories.  
Features: distinctive chimney, bay window, distinctive door.

**A240 House, c.1890**  
Gable roof, 2½ stories.  
Features: porch.

**A241 Duplex, c.1890**  
Gable roof, 2 stories.

**A242 House, c.1880**  
Gable roof, 2½ stories.  
Features: distinctive chimney.

**A243 House, c.1850**  
Georgian plan.  
Features: sidelights, entry pilasters, Queen Anne porch.

**A244 House, 1801/1882**  
Federal/Queen Anne style, Georgian plan, hip roof.  
Features: round window, quions, Queen Anne porch, cornice caps, enriched cornice, peaked lintelboards, cornice brackets, distinctive dormers, distinctive lintelboards, enriched frieze.

**A245 House, c.1950**  
Non-contributing due to age.

**A246 House, 1808**  
Federal style, Georgian plan.  
Features: transom, sidelights, entry pilasters, keystone, enriched cornice, gable fanlight, porch.

**A247 House, c.1885/1908**  
Gable roof, 2½ stories.  
Features: Queen Anne porch, bay window.

**A248 House, c.1840**  
Greek Revival style, sidehall plan, 1½ stories.  
Features: entry entablature, entry pilasters, sidelights.

**A249 House, 1796**  
Cape Cod.  
Features: Gothic wall dormer.

**A250 House, c.1890/1909**  
Wood shingle, gable roof, 1½ stories.  
Features: rafter tails, distinctive dormer, label lintels, distinctive chimney.

**A251 House, 1806**  
Non-contributing due to alterations.

**A252 House, 1884**  
Architect/builder: Clinton Smith  
Queen Anne style, brick, jerkinhead roof, 2½ stories.  
Features: lintels, granite, beltcourse, decorative brickwork, Queen Anne porch, enriched cornice, distinctive dormer, bay window, gablescreen.

**A252a Carriage Barn, c.1885**  
 Architect/builder: Clinton Smith  
 Queen Anne style, jerkinhead roof.  
 Features: round window, applied woodwork.  
 Features: quoins, round arch window, distinctive dormer, distinctive door, entry fanlight, distinctive lintelboards.

**A253 Town Hall, 1883**  
 Architect/builder: Clinton Smith  
 Queen Anne style, brick, gable roof, 2 stories.  
 Features: side tower, segmental arch window, decorative brickwork, entry columns, marble, keystone, Queen Anne window, belfry, name inscription, distinctive chimney, lintels.

**A254 Soldiers Monument, 1905**



Features: granite, name inscription, date inscription, statuary.

**A255 Church, 1882**  
 Architect/builder: Smith & Allen  
 Queen Anne style, gable roof, 2½ stories.  
 Features: side tower, belfry, door hood, pointed arch window, stained glass, shinglework, distinctive chimney, cornice brackets, applied woodwork, name inscription.

**A256 House, c.1890**  
 Stucco, gable roof, 2½ stories.

**A257 Commercial Block, 1892-1898**  
 Architect/builder: Clinton Smith  
 Brick, flat roof, 3 stories.  
 Features: granite, rustication, name inscription, parapet, lintels, Queen Anne storefront, decorative brickwork, lintels, corner tower.

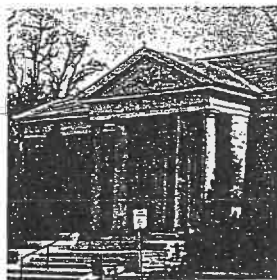
**A258 Commercial Block, 1903**  
 Architect/builder: Franklin Austin  
 Brick, flat roof, 3 stories.  
 Features: lintels, granite, name inscription, decorative brickwork, date inscription, enriched cornice.

**A259 Commercial Block, 1909**  
 Stone, flat roof, 2 stories.  
 Features: date inscription, lintels, granite, rustication, name inscription.

**A260 Commercial Block, 1903/c.1935**  
 Brick, flat roof, 2 stories.

**A261 Commercial Block, 1884**  
 Architect/builder: Smith & Allen  
 Queen Anne style, brick, flat roof, 2 stories.  
 Features: decorative brickwork, lintels, marble, enriched cornice, Queen Anne porch.

**A262 Library, 1923**



Neo-Classical Revival style, stone, hip roof, 1 story.  
 Features: rustication, monumental portico, granite, keystone, full entablature, distinctive dormers, date inscription, finials, name inscription.

**A263 House, 1816**  
 Sidehall plan, 2½ stories.  
 Features: door hood, bay window, distinctive chimney.

**A264 House, 1813**  
 Architect/builder: Lavius Fillmore  
 Federal style, Georgian plan.  
 Features: Palladian window, enriched frieze, fretwork, sidelights, keystone, entry fanlight, entry pilasters, reveals, distinctive chimney, unusual window.

**A265 House, 1852**  
 Vernacular-Greek Revival style, sidehall plan, 2½ stories.  
 Features: sidelights, transom, entry pilasters, entry entablature, distinctive door, corner pilasters.

**A266 House, 1832**  
 Federal-Greek Revival style, brick, Georgian plan.  
 Features: distinctive chimney, enriched cornice, lintels, marble, entry fanlight, sidelights, Greek Revival porch, reveals, gable fanlight, entry pilasters, leaded glass.

**A267 School, 1911/1921**  
 Colonial Revival style, brick, flat roof, 1 story.  
 Features: full entablature, monumental portico, date inscription, beltcourse, marble.

**A268 House, 1837**  
 Greek Revival style, sidehall plan, 2½ stories.  
 Features: entry pilasters, sidelights, entry fanlight, entry entablature, round window, bay window, gable fan, distinctive door, reveals, leaded glass.

**A269 House, 1854**  
 Greek Revival-Gothic Revival style, sidehall plan, 2½ stories.  
 Features: Gothic Revival porch, wood cresting, sidelights, transom, label lintels.

**A270 House, c.1870**  
 Italianate style, sidehall plan, 2½ stories.  
 Features: cornice brackets, bay window, Colonial Revival porch, paneled entry pilasters, sidelights, transom, cornice caps, peaked lintelboards.

**A271 House, 1867**  
 French Second Empire style, mansard roof, 2½ stories.  
 Features: cornice brackets, distinctive dormer, keystone, quoins, cornice caps, distinctive door.

**A271a Carriage Barn, c.1867**  
 French Second Empire style, mansard roof.  
 Features: quoins, round arch window, distinctive dormer, distinctive door, entry fanlight, distinctive lintelboards.

**A272 House, 1797/1854**  
 Gable roof, 1½ stories.  
 Features: round arch window, peaked lintelboards.

**A273 House, c.1870**  
 Italianate style, sidehall plan, 2½ stories.  
 Features: cornice brackets, distinctive lintelboards, Italianate porch, unusual window.

**A274 House, c.1822/c.1935**  
 Gable roof, 1½ stories.  
 Features: Colonial Revival porch, cornice caps, distinctive door.

**A275 House, 1885**  
 Architect/builder: Clinton Smith  
 Stick Style, sidehall plan, 2½ stories.  
 Features: applied woodwork, shinglework, bargeboard, decorative rafter tails, distinctive door, Queen Anne porch, fluted entry pilaster.

**A276 House, 1908**  
 Colonial Revival style, gambrel roof, 2½ stories.  
 Features: shinglework, keystone, Colonial Revival porch, gable fanlight, bay window, pressed stone.

**A277 House, c.1880**  
 Gable roof, 2½ stories.  
 Features: distinctive dormer, shinglework, stained glass, cornice caps, Colonial Revival porch.

**A278 House, c.1900**  
 Gable roof, 2½ stories.  
 Features: bay window, Queen Anne porch, recessed balcony.

**A279 House, c.1820**  
 Gable roof, 1½ stories.  
 Features: cornerblocks, fluted entry pilasters, porch.

**A280 House, c.1810**  
 Gable roof, 1½ stories.  
 Features: Queen Anne porch.

**A281 House, c.1850**  
 Vernacular-Greek Revival style, Georgian plan.  
 Features: corner pilasters, transom, cornice caps, full entablature, reveals, distinctive door.

**A282 House, c.1880**  
 Vernacular-Italianate style, hip roof, 2 stories.  
 Features: cornice brackets, Queen Anne porch, cornice caps.

**A283 House, 1810**  
 Georgian plan.  
 Features: transom, sidelights, cornice caps, distinctive chimney, porch.

**A284 House, c.1811**  
 Gable roof, 1½ stories.  
 Features: cornice caps.

**A285 House, c.1820**  
 Gable roof, 2½ stories.  
 Features: cornice brackets, Italianate porch.

**A286 House, 1871**  
 Vernacular-Italianate style, gable roof, 3½ stories.  
 Features: bay window, cornice brackets, Italianate porch, paneled corner pilasters.

**A287 House, 1925**  
 Colonial Revival style, gable roof, 2½ stories.  
 Features: entry fanlight, keystone, Colonial Revival porch.

**A288 House, c.1875**  
 Italianate style, sidehall plan, 2½ stories.  
 Features: Italianate porch, enriched frieze, cornice brackets, paneled corner pilasters, distinctive door, bay window, Colonial Revival porch, entry entablature, full entablature.

**A288a Carriage Barn,**  
c.1875  
Features: cupola, peaked  
lintelboards.

**A289 House, c.1895**  
Colonial Revival style, hip  
roof, 2½ stories.  
Features: stained glass,  
leaded glass, sidelights, entry  
pilasters, entry entablature,  
Colonial Revival porch,  
distinctive dormer, gazebo,  
porte cochere.

**A289a Carriage Barn,**  
c.1895  
Features: cupola.

**A290 House, c.1870**  
Vernacular-Greek Revival  
style, sidehall plan,  
2½ stories.  
Features: fluted entry  
pilasters, entry entablature,  
Italianate porch, gable  
fanlight.

**A291 House, c.1875**  
Gable roof, 2½ stories.  
Features: Queen Anne  
porch, bay window.

**A292 House, c.1820**  
I-House.  
Features: entry pilasters,  
sidelights, peaked  
lintelboards, entry  
entablature, porch, marble.

**A293 House, 1800**  
Non-contributing due to  
alterations.

**A294 House, c.1840**  
Gable roof, 1½ stories.

**A295 House, c.1830**  
Gable roof, 1½ stories.

**A296 House, c.1840/1943**  
Vernacular-Greek Revival  
style, Georgian plan.  
Features: sidelights, entry  
pilasters, entry entablature,  
Colonial Revival porch.

**A297 House, c.1870**  
Sidehall plan, 2½ stories.  
Features: transom, cornice  
brackets, distinctive chimney.

**A298 House, c.1895**  
Gable roof, 2½ stories.  
Features: porch.

**A299 House, c.1870**  
Sidehall plan, 2½ stories.  
Features: Colonial Revival  
porch, cornice brackets.

**A300 House, c.1965**  
Non-contributing due to age.

**A301 House, c.1820**  
Stucco, I-House.

**A302 House, c.1920**  
Architect/builder: Leonard  
Zeeman  
Colonial Revival style, brick  
vener, gambrel roof,  
1½ stories.  
Features: sidelights.

**A303 Tavern, 1800**  
Federal style, Georgian plan,  
hip roof.  
Features: enriched frieze.

**A304 House, c.1800**  
Architect/builder: John  
Atwater  
Gable roof, 1½ stories.

**A304a Garage, c.1920**  
Jerkinhead roof.  
Features: historic garage  
door.

**A305 House, 1854**  
Sidehall plan, 1½ stories.  
Features: sidelights, full  
entablature, porch.

**A305a Carriage Barn,**  
c.1900

**A306 House, c.1810**  
Architect/builder: John  
Atwater  
Capè Cod.  
Features: porch, bay  
window.

**A306a Carriage Barn,**  
c.1880

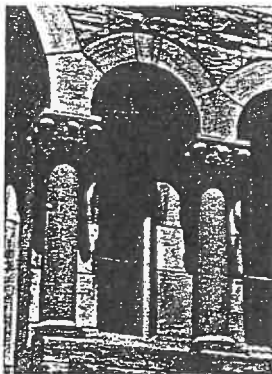
**A307 House, c.1920**  
Colonial Revival style, gable  
roof, 2½ stories.  
Features: porch.

**A307a Garage, c.1920**  
Hip roof.  
Features: cupola.

**A308 House, c.1955**  
Non-contributing due to age.  
Gable roof, 1½ stories.

**A309 House, 1850**  
Gable roof, 2½ stories.  
Features: sidelights,  
Italianate porch, distinctive  
chimney, enriched cornice,  
bay window.

**A310 Church, 1902-1910**



Architect/builder: Hopkins &  
Casey  
Neo-Classical Revival style,  
stone, gable roof, 1 story.  
Features: marble, rose  
window, belfry, round arch  
window, distinctive chimney,  
distinctive lintels, rustication,  
stained glass, enriched  
cornice, distinctive door,  
reveals, side tower.

**A311 House, c.1935**  
Wood shingle, jerkinhead  
roof, 2 stories.  
Features: porch.

**A312 House, c.1945**  
Non-contributing due to age.

**A313 House, c.1940**  
Gable roof, 2½ stories.  
Features: porch, sidelights.

**A314 House, c.1850**  
Sidehall plan, 2½ stories.  
Features: porch.

**A315 House, c.1850**  
Vernacular-Greek Revival  
style, stucco, gable roof,  
1½ stories.  
Features: full entablature,  
Italianate porch.

**A315a Garage, c.1930**

**A316 House, c.1845**  
Greek Revival style, gable  
roof, 1½ stories.  
Features: paneled corner  
pilasters, full entablature,  
cornice caps.

**A317 House, c.1850**  
Vernacular-Greek Revival  
style, sidehall plan,  
1½ stories.  
Features: sidelights, corner  
pilasters, entry entablature,  
entry pilasters.

**A317a Garage, c.1940**  
Features: historic garage  
door.

**A318 House, c.1840**  
Sidehall plan, 1½ stories.  
Features: kneewall window,  
porch.

**A319 House, c.1840**  
Sidehall plan, 1½ stories.  
Features: porch.

**A319a Carriage Barn,**  
c.1880  
Features: cornice brackets.

**A320 School, 1867**  
Architect/builder: J. J. R.  
Randall  
Italianate style, brick, hip  
roof, 3 stories.  
Features: keystone,  
segmental arch window,  
hood molding, corner  
pilasters, round arch  
window, enriched cornice,  
cornice brackets, pressed  
metal, distinctive chimney,  
entry pilasters, entry  
fanlight.

**A321 House, 1867**  
Italianate style, hip roof,  
2 stories.  
Features: belvedere, paneled  
corner pilasters, cornice  
brackets, cornice caps, hood  
molding, enriched cornice,  
enriched frieze, distinctive  
dormers, distinctive door,  
distinctive lintelboards,  
Italianate porch.

**A322 House, c.1940**  
Gambrel roof, 2½ stories.

**A323 House, 1813**  
I-House.  
Features: Italianate porch,  
bay window, distinctive  
chimney.

**A324 House, 1810/1878**



Federal/Italianate style, gable  
roof, 2½ stories.  
Features: Italianate porch,  
cornice brackets, central  
tower, peaked lintelboards,  
bay window, applied wood-  
work, distinctive dormer,  
distinctive lintelboards,  
unusual window, distinctive  
door.

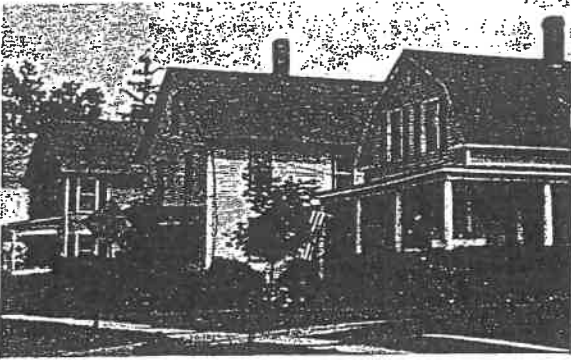
**A325 House, 1883**  
French Second Empire style,  
sidehall plan, mansard roof,  
2½ stories.  
Features: distinctive dormer,  
bay window, Italianate  
porch, round window, side  
tower, cornice caps, cornice  
brackets.

**A326 House, 1871**  
Italianate style, gable roof,  
2½ stories.  
Features: bay window,  
cornice brackets, paneled  
corner pilasters, cornice caps,  
Colonial Revival porch,  
Italianate porch.

**A327 House, c.1960**  
Non-contributing due to age.  
Gable roof, 1½ stories.

**A328 House, c.1850**  
Gable roof, 2½ stories.  
Features: porch.

**A329 House, 1847**  
Architect/builder: James  
Lamb  
Greek Revival style, sidehall  
plan, 2 stories.  
Features: entry columns,  
entry pilasters, sidelights,  
transom, entry entablature,  
paneled corner pilasters,  
applied woodwork, full  
entablature.



**ELM STREET HISTORIC DISTRICT**

**B1 House, c.1875**  
Sidehall plan, 1 1/2 stories.  
Features: Colonial Revival porch, kneewall window.

**B1a Shed, c.1890**

**B2 House, c.1875**  
Gable roof, 2 stories.  
Features: Queen Anne porch, distinctive chimney.

**B3 House, 1915**  
Gable roof, 1 1/2 stories.  
Features: bay window, porch, Gothic wall dormer.

**B3a Garage, c.1960**

*Elm Street, located not far from industries located next to the railroad line, provided modest housing for its residents. Several types of vernacular homes dating from 1875 through 1915 line both sides of the street.*

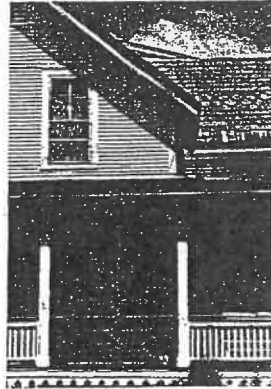
**B4 House, 1904**  
Colonial Revival style, gambrel roof, 2 1/2 stories.  
Features: stained glass, Colonial Revival porch, bay window.

**B4a Garage, c.1920**

**B5 House, c.1875**  
Tri-Gable Ell, 1 1/2 stories.  
Features: polychrome slate, Italianate porch, distinctive door.

**B5a Carriage Barn, c.1890**

**B6 House, c.1875**



Sidehall plan, 2 stories.  
Features: distinctive door, porch.

**B6a Shed, c.1900**

**B7 House, 1940**  
Gable roof, 1 1/2 stories.

**B8 House, c.1875**  
Georgian plan.  
Features: sidelights, cornice brackets, porch.

**B9 House, c.1875**  
Gable roof, 2 stories.  
Features: Italianate porch.

**B9a Garage, c.1970**  
Non-contributing due to age.

**B10 House, c.1875**  
Sidehall plan, 2 stories.  
Features: Italianate porch, bay window.

**B10a Garage, c.1920**  
Hip roof.  
Features: historic garage door.

**B11 House, c.1875**  
Sidehall plan, 2 1/2 stories.

**B11a Carriage Barn, c.1900**

**B12 House, c.1910**  
Colonial Revival style, gambrel roof, 2 stories.  
Features: Colonial Revival porch.

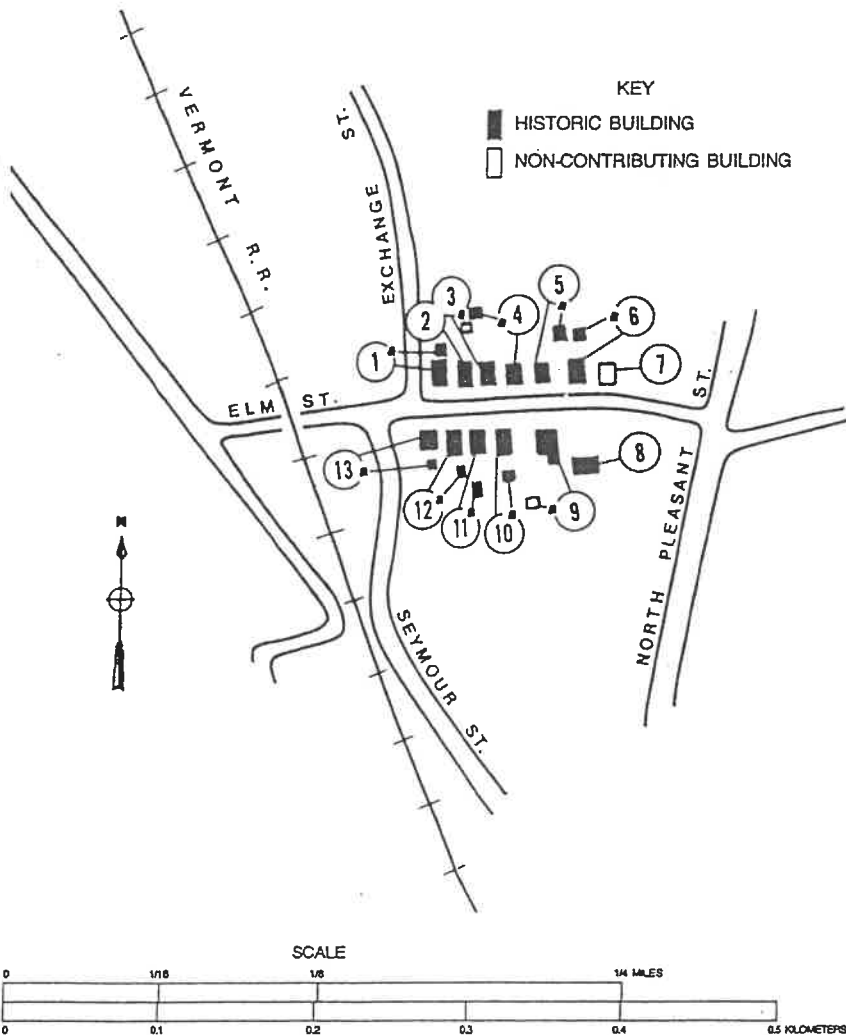
**B12a Garage, c.1940**

**B13 House, c.1910**  
Colonial Revival style, gambrel roof, 2 stories.  
Features: bay window, Colonial Revival porch.

**B13a Garage, c.1940**

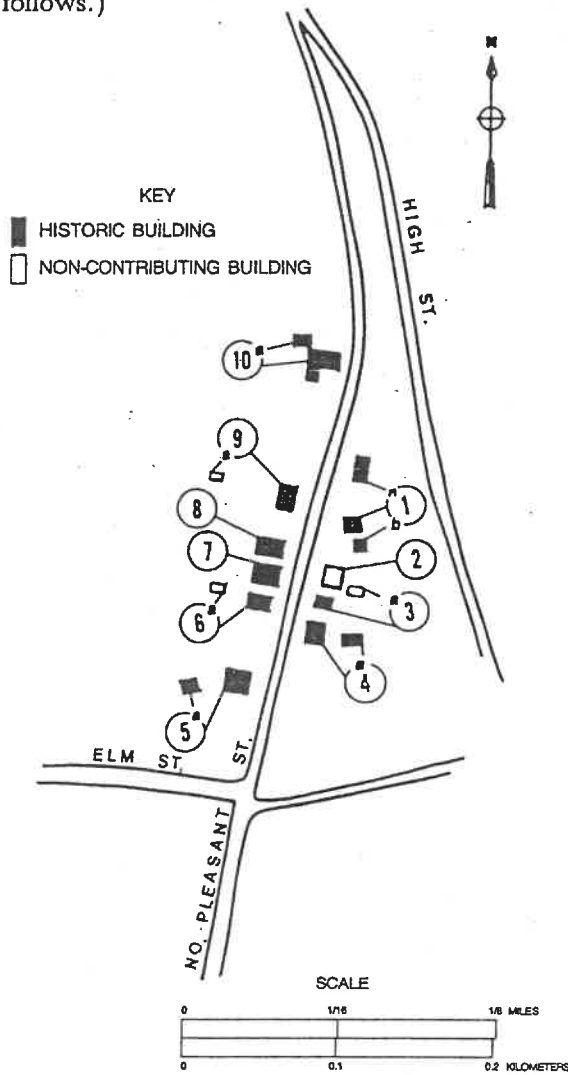
**B ELM STREET HISTORIC DISTRICT MAP**

(Sites correspond to Register listing that follows.)



# C NORTH PLEASANT STREET HISTORIC DISTRICT MAP

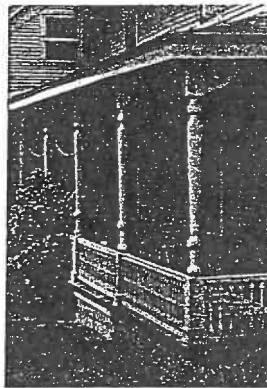
(Sites correspond to Register listing that follows.)



SOURCE: VT. MAPPING PROGRAM ORTHOPHOTOS, 1975.

## NORTH PLEASANT STREET HISTORIC DISTRICT

- C1 House, c.1800  
Georgian plan.  
Features: Queen Anne porch.
- C1a Garage, c.1910
- C1b Shed, c.1910
- C2 House, c.1960  
Non-contributing due to age.
- C3 House, c.1910  
Stucco, gable roof, 1½ stories.  
Features: porch.
- C3a Garage, c.1950  
Non-contributing due to age.
- C4 House, c.1820  
Georgian plan.  
Features: porch.
- C4a Carriage Barn, c.1900
- C5 House, c.1865

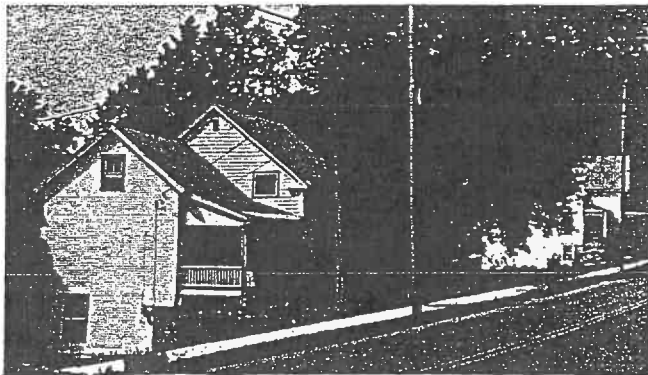


Sidehall plan, 1½ stories.  
Features: Queen Anne porch, cornice brackets, hood molding, bay window.

C5a Garage, c.1920  
Features: historic garage door.

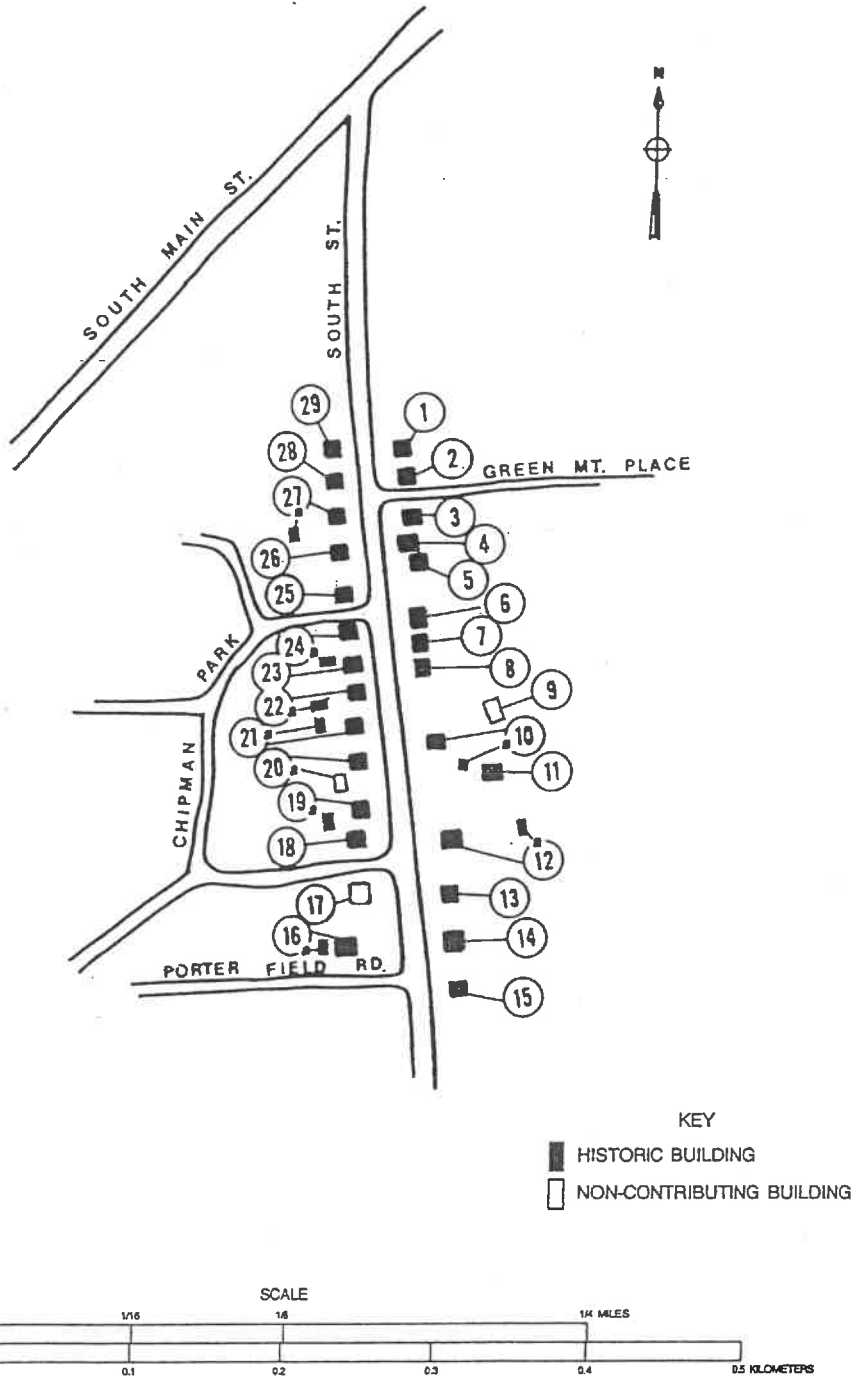
- C6 House, c.1875  
Stucco, gable roof, 1½ stories.  
Features: bay window.
- C6a Garage, c.1950  
Non-contributing due to age.
- C7 House, c.1860  
Gable roof, 2 stories.  
Features: porch, triangular gable fan.
- C8 House, c.1865  
Gable roof, 2 stories.  
Features: porch, distinctive door.
- C9 House, c.1855  
Classic Cottage.  
Features: porch, distinctive door, entry entablature.
- C9a Shed, c.1970  
Non-contributing due to age.
- C10 House, c.1875  
Sidehall plan, 2 stories.  
Features: Queen Anne porch, Colonial Revival porch, cornice caps, distinctive door.
- C10a Shed, c.1910

*North Pleasant Street forms one of the northern approaches to Middlebury Village. A variety of widely-spaced homes represent many periods of village history.*



# D SOUTH STREET HISTORIC DISTRICT MAP

(Sites correspond to Register listing that follows.)



**SOUTH STREET  
HISTORIC DISTRICT**

**D1 House, 1929**  
Colonial Revival style, hip roof, 2 stories.  
Features: sidelights, distinctive chimney, distinctive dormer.

**D2 House, c.1895**  
Colonial Revival style, stucco, gambrel roof, 2 stories.  
Features: stained glass.

**D3 House, c.1850**  
Gable roof, 1 1/2 stories.  
Features: sidelights, fluted entry pilasters.

**D4 House, c.1830**  
Gable roof, 2 1/2 stories.  
Features: gable fanlight, sidelights.

**D5 House, c.1890**  
Gable roof, 2 1/2 stories.  
Features: round window, distinctive door, door hood, decorative rafter tails, keystone.

**D6 House, c.1905**  
Gable roof, 1 1/2 stories.  
Features: Queen Anne porch.

**D7 House, c.1895**  
Gable roof, 1 1/2 stories.  
Features: Colonial Revival porch.

**D8 House, c.1895**  
Gable roof, 2 stories.  
Features: Colonial Revival porch.

**D9 House, c.1970**  
Non-contributing due to age.

**D10 House, c.1878**



**D10 House, c.1878**  
Italianate style, sidehall plan, 2 stories.  
Features: bay window, door hood, cornice brackets, applied woodwork, cornice caps, Italianate porch, distinctive lintelboards.

**D10a Garage, c.1920**

**D11 House, c.1858**  
Gable roof, 1 1/2 stories.  
Features: Gothic wall dormer, sidelights, distinctive lintelboards, Gothic Revival porch.



*South Street is a residential street with many good examples of historic architectural styles from the last half of the nineteenth and early twentieth centuries, including the Italianate, Queen Anne, and Colonial Revival. This notable Queen Anne-Colonial Revival style house (D16, c.1896) was designed by Middlebury architect Clinton Smith.*

**D12 House, c.1875**  
Sidehall plan, 2 1/2 stories.  
Features: bay window, porch, round window, distinctive chimney, distinctive door, corner pilasters.

**D12a Carriage Barn, c.1880**  
Features: Gothic wall dormer.

**D13 House, c.1920**  
Wood shingle, gable roof, 2 stories.  
Features: Colonial Revival porch, distinctive door.

**D14 House, c.1924**  
Gable roof, 2 stories.  
Features: Colonial Revival porch, sidelights.

**D15 House, c.1929**  
Tudor Revival style, brick, gable roof, 2 stories.  
Features: Tudor arch.

**D16 House, c.1896**  
Architect/builder: Clinton Smith  
Queen Anne-Colonial Revival style, gable roof, 2 1/2 stories.  
Features: distinctive door, Queen Anne porch, bay window, applied woodwork, gable fanlight, cornice brackets.

**D16a Garage, c.1920**

**D17 House, c.1948**  
Non-contributing due to age.  
Colonial Revival style, Georgian plan.  
Features: entry pilasters, entry fan.

**D18 House, c.1940**  
Colonial Revival style, flushboard, gable roof, 2 stories.  
Features: corner pilasters, entry entablature, entry pilasters.

**D19 House, 1909**  
Gable roof, 1 1/2 stories.  
Features: porch.

**D19a Shed, c.1910**  
Features: rafter tails.

**D20 House, c.1885**  
Gable roof, 2 1/2 stories.  
Features: Queen Anne porch, cornice caps, distinctive dormer, balcony.

**D20a Garage, c.1970**  
Non-contributing due to age.

**D21 House, c.1895**  
Colonial Revival style, hip roof, 2 1/2 stories.  
Features: Colonial Revival porch, distinctive dormer, bay window, sidelights, enriched cornice.

**D21a Garage, c.1930**

**D22 House, c.1885**  
Greek Revival-Italianate style, gable roof, 1 1/2 stories.  
Features: Queen Anne porch, Gothic wall dormer, cornice brackets, peaked lintelboards, distinctive lintelboards.

**D22a Carriage Barn, c.1900**

**D23 House, 1910**  
Hip roof, 2 stories.  
Features: Colonial Revival porch.

**D24 House, c.1855**  
Gable roof, 1 1/2 stories.  
Features: peaked lintelboards, Gothic Revival porch.

**D24a Carriage Barn, c.1900**

**D25 House, c.1930**  
Colonial Revival style, Georgian plan.  
Features: fluted entry pilasters, entry pediment.

**D26 House, c.1900**



**D26 House, c.1900**  
Colonial Revival style, wood shingle, gable roof, 2 stories.  
Features: cornice caps, rafter tails, round arch window, oriel window, shinglework.

**D27 House, c.1895**  
Gable roof, 2 stories.

**D27a Carriage Barn, c.1895**  
Gable roof, 2 stories.

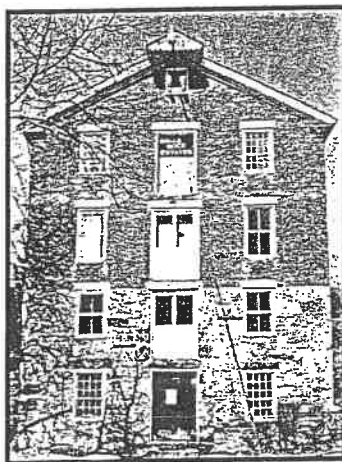
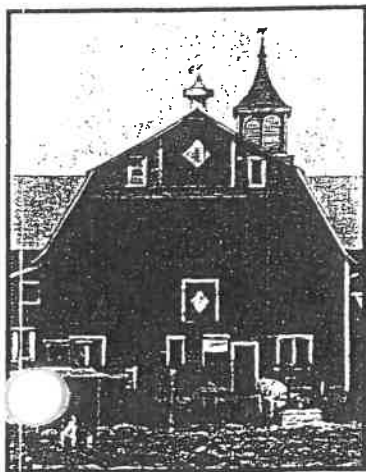
**D28 House, 1918**  
Colonial Revival style, Georgian plan.  
Features: sidelights, Colonial Revival porch, entry pilasters, entry entablature.

**D29 House, c.1890**  
Queen Anne-Stick Style, gable roof, 2 1/2 stories.  
Features: Queen Anne porch, sidelights, stained glass, rafter tails, applied woodwork.

# THE HISTORIC ARCHITECTURE OF ADDISON COUNTY

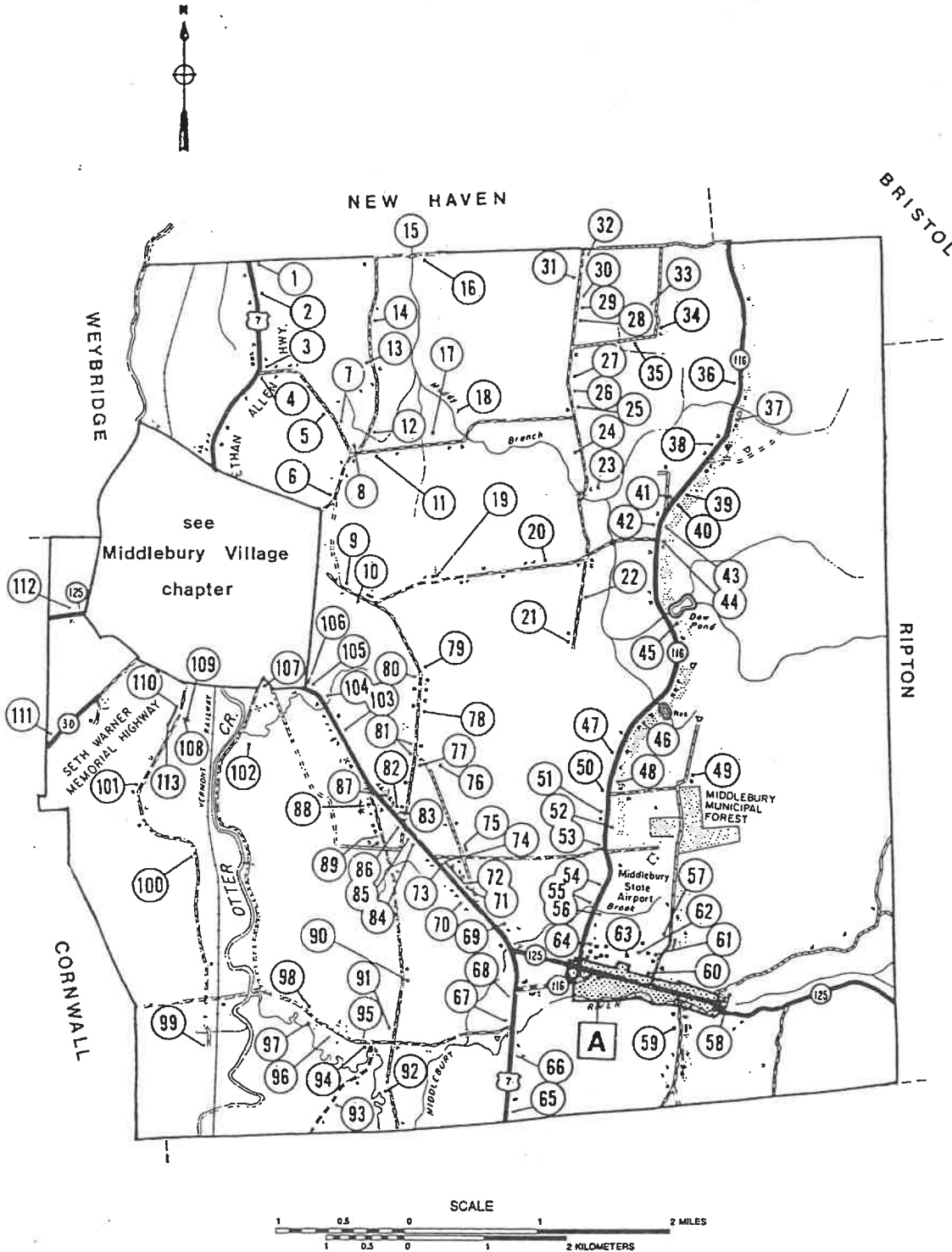
VERMONT STATE REGISTER OF HISTORIC PLACES

## MIDDLEBURY--- TOWN



# TOWN OF MIDDLEBURY MAP

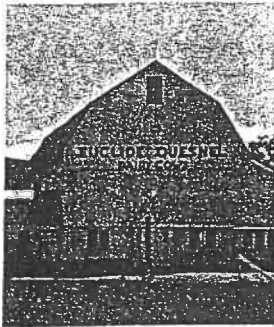
Sites listed in the State Register of Historic Places  
(Numbers correspond to Register listings that follow.  
For A see historic district map.)



**TOWN OF MIDDLEBURY**  
**Sites listed in the State Register of Historic Places (For locations see town and historic district maps.)**

**1 House, c.1845**  
 Greek Revival style, Classic Cottage.  
 Features: entry entablature, full entablature, paneled corner pilasters, sidelights, distinctive chimney, porch. Related shed, carriage barn.

**2 (Farm)**  
 a. House, c.1860/c.1890  
 Gable roof, 2½ stories.  
 Features: Queen Anne porch, shinglework, cornice caps.  
 b. House, c.1925  
 Gable roof, 1½ stories.  
 c. Carriage Barn, c.1870  
 d. Shed, c.1950  
 e. Barn, c.1875/c.1930



Features: cupola, highdrive, tiled silo.  
 f. Barn, 1962  
 Gambrel roof.  
 Features: tiled silo.  
 g. Milkhouse, c.1930  
 h. Powerhouse, c.1910

**3 House, c.1845**  
 Greek Revival style, Classic Cottage.  
 Features: entry entablature, paneled entry pilasters, sidelights.

**4 House, c.1870**  
 Vernacular-Italianate style, gable roof, 2 stories.  
 Features: peaked lintelboards, cornice caps.

**5 House, c.1791**  
 Vernacular-Federal style, Georgian plan.  
 Features: sidelights, distinctive chimney. Related early bank barn.  
 Features: highdrive.

**6 House, c.1870**  
 Gable roof, 2 stories.  
 Features: entry entablature, entry pilasters, door hood. Related garage, barn.  
 Features: highdrive.

**7 House, c.1880**  
 Sidehall plan, 2 stories.  
 Features: Italianate porch. Related carriage barn.

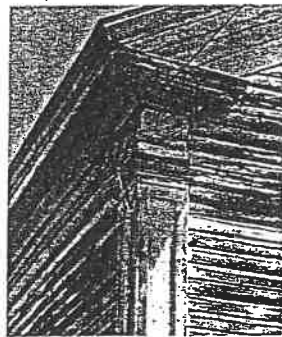
**8 House, c.1885**  
 Architect/builder: Smith, Clinton  
 Queen Anne-Stick Style, brick, gable roof, 2½ stories.  
 Features: lintels, slate, Queen Anne porch, gablescreen, triangular gable fan, side tower, bay window, applied woodwork, pointed arch window.

**9 House, c.1810**  
 Federal style, gable roof, 1½ stories.  
 Features: entry columns, round window, entry pilasters, quions, enriched entablature, transom, bay window, kneewall window. Related shed, granary, bank barn.  
 Features: hay door, silo.

**10 House, c.1860**  
 I-House.  
 Features: shinglework, Queen Anne porch, enriched entablature, cornice caps. Related carriage barn, barn.  
 Features: hay door, cupola, finials, hoist, diagonal boarding.

**11 Barn, c.1910/c.1950**  
 Features: hoist, hay door. Related shed, house.

**12 (Farm)**  
 a. House, c.1840



Greek Revival style, Classic Cottage.  
 Features: entry entablature, sidelights, distinctive door, paneled entry pilasters, paneled corner pilasters.  
 b. Granary, c.1890  
 Board and batten.  
 c. Barn, c.1850  
 Features: hay door.  
 d. Milkhouse, c.1925  
 e. Chicken Coop, c.1945  
 Features: monitor.  
 f. Chicken Coop, c.1900  
 g. Pighthouse, c.1900

**13 House, c.1860**  
 Classic Cottage.

**14 (Farm)**  
 a. Carriage Barn, c.1890  
 Features: hoist, hay door, transom.  
 b. Barn, c.1920  
 Features: hay door, ventilators.  
 c. Carriage Barn, c.1880  
 d. Pighthouse, c.1880  
 e. Granary, c.1890  
 f. Creamery, c.1880  
 g. House, 1943  
 Wood shingle, gable roof, 1½ stories.

**15 Covered Bridge, c.1825**  
 Features: Town lattice truss. Listed in the National Register of Historic Places

**16 House, c.1855**  
 Vernacular-Greek Revival style, gable roof, 1½ stories.  
 Features: marble, distinctive door.  
 a. Carriage Barn, c.1890  
 Features: hay door, bank barn.  
 b. Corn Crib, c.1890  
 c. Bank Barn, c.1870

**17 (Farm)**  
 a. House, c.1845



Greek Revival style, sidehall plan, 1½ stories.  
 Features: Greek Revival porch, sidelights, entry entablature, recessed porch, paneled corner pilasters.  
 b. Barn, c.1900  
 c. Milkhouse, c.1910  
 d. Granary, c.1890

**18 House, c.1850**  
 Gothic Revival style, gable roof, 1½ stories.  
 Features: bargeboard, recessed porch, label lintels, pointed arch window, Gothic Revival porch, Colonial Revival porch, sidelights, transom.  
 a. Guest Cottage, c.1920  
 Gable roof, 1 story.  
 Features: rafter tails, recessed porch.  
 b. Carriage Barn, c.1850  
 Features: hay door.  
 c. Office, c.1850  
 Gable roof, 1½ stories.

**19 Marble Works**  
 a. Mill, c.1910  
 Features: tie rod ends, stacked-wood construction.  
 b. Springhouse, c.1915  
 c. House, c.1865  
 Gable roof, 1½ stories.  
 d. Garage, c.1950  
 e. House, c.1860  
 Gable roof, 1½ stories.  
 f. House, c.1880  
 Gable roof, 1½ stories.  
 Features: Queen Anne porch.

**20 House, c.1814**  
 Federal style; brick, Cape Cod.  
 Features: distinctive interior, reveals, marble, arches. Related barn.

**21 (Farm)**  
 a. House, c.1848  
 Greek Revival style, sidehall plan, 1½ stories.  
 Features: entry entablature, full entablature, paneled corner pilasters, paneled entry pilasters, sidelights.  
 b. Shed, c.1945  
 c. Chicken Coop, c.1910  
 d. Chicken Coop, 1964  
 e. Creamery, c.1900  
 Gable roof, 1½ stories.  
 f. Shed, c.1900  
 g. Carriage Barn, c.1870  
 Features: hay door.  
 h. Bank Barn, c.1870  
 i. Barn, c.1880/c.1955  
 Gambrel roof.  
 Features: hoist.  
 j. Corn Crib, c.1880  
 k. Shed, c.1890  
 l. Sugarhouse, c.1910  
 Features: monitor.

**22 House, c.1850**  
 Vernacular-Greek Revival style, Classic Cottage.  
 Features: sidelights, corner pilasters, porch, flushboard, Greek Revival porch, distinctive door.

**23 House, c.1865**  
 Vernacular-Greek Revival-Italianate style, Georgian plan.  
 Features: cornice caps, corner pilasters, gable fan. Related early barn, barn.  
 Features: board and batten.

**24 Ground Stable Barn, c.1925**  
 Gambrel roof.  
 Features: monitor, transom. Related house.

**25 House, c.1825**  
 Georgian plan.  
 Features: Queen Anne porch, distinctive door, bay window. Related shed.

**26 (Farm)**  
 a. House, c.1940  
 Georgian plan.  
 Features: porch.  
 b. Shed, c.1890  
 c. Carriage Barn, c.1890  
 d. Milkhouse, c.1920  
 e. Granary, c.1935  
 f. Early Barn, c.1850/c.1910  
 Features: hoist, hay door.

**27 House, c.1850/c.1890**  
 Greek Revival style, Classic Cottage.  
 Features: Greek Revival porch.  
 Related shed, shed.  
 a. Carriage Barn, c.1880  
 Features: transom, hay door, weathervane.  
 b. Chicken Coop, c.1935/c.1950  
 c. Shed, c.1955  
 d. Barn, c.1865

**28 House, c.1850**  
 Greek Revival style, sidehall plan, 1½ stories.  
 Features: corner pilasters, sidelights, Greek Revival porch, kneewall window. Related pighthouse.

**29 House, c.1787/c.1825**  
Vernacular-Federal style,  
Georgian plan.  
Related carriage barn, barn.  
Features: cupola, hay door,  
st.

**30 House, c.1850**  
Vernacular-Greek Revival  
style, Classic Cottage.  
Related granary.

**31 (Farm)**  
a. House, c.1845  
Greek Revival style, sidehall  
plan, 1½ stories.  
Features: entry entablature, full  
entablature, sidelights, paneled  
entry pilasters.  
b. Carriage Barn, c.1860  
Board and batten.  
Features: hay door, post and beam.  
c. Granary, c.1850  
d. Shed, c.1890

**32 School, 1878**  
Architect/builder: Clinton  
Smith  
Queen Anne style, gable  
roof, 1½ stories.  
Features: gablescreen,  
cornice brackets, corner-  
blocks, applied woodwork.  
Related barn.  
Features: hay door.

**33 (Farm)**  
a. House, c.1860  
Classic Cottage.  
Features: paneled corner  
pilasters, sidelights, kneewall  
window, entry entablature,  
paneled entry pilasters, fencing.  
b. Carriage Barn, c.1920  
Bank Barn, c.1870  
Board and batten.  
Features: rafter tails.  
c. Milkhouse, c.1930  
Features: rafter tails.

**34 House, c.1825**  
Cape Cod.  
Features: distinctive interior,  
kneewall window, sidelights,  
fencing.

**35 House, c.1925**  
Wood shingle, gable roof,  
1½ stories.  
Related garage, chicken  
barn, shed.  
Features: wood shingle,  
board and batten.

**36 House, c.1845**  
Sidehall plan, 1½ stories.  
Features: kneewall window,  
porch.  
Related bank barn, shed,  
carriage barn.  
Features: hoist, weathervane,  
hay door, rafter tails,  
transom, hoist.

**37 House, c.1800**  
Architect/builder: James Crane  
Cape Cod.  
Features: Queen Anne porch,  
sidelights, distinctive door.  
Related garage.  
Features: rafter tails.

**38 House, c.1810**  
Cape Cod.

House, c.1860  
Classic Cottage.  
Features: bay window,  
porch.

**40 House, c.1820/c.1865**  
Vernacular-Greek Revival  
style, gable roof, 1½ stories.  
Features: Gothic Revival  
porch, enriched entablature,  
distinctive door, continuous  
architecture.

**41 House, c.1795/c.1850**  
Gable roof, 1½ stories.  
Features: Gothic wall  
dormer, distinctive chimney,  
porch.  
Related shed.

**42 House, c.1840/c.1865**  
Gable roof, 1½ stories.  
Features: Gothic Revival  
porch, entry pilasters.

**43 (Farm)**  
a. House, c.1865  
Gothic Revival style, Classic  
Cottage.  
Features: Gothic wall dormer,  
bargeboard, sidelights, transom.  
b. Pighouse, c.1870  
Board and batten, gable roof,  
1½ stories.  
c. Chicken Coop, c.1900  
d. Granary, c.1860  
e. Carriage Barn, c.1860  
f. Early Barn, c.1840/c.1860  
g. Warehouse, 1946

**44 School, c.1880**  
Gable roof, 1 story.  
Features: belfry, bank of  
windows, shinglework,  
finials, cupola, peaked entry  
lintel, peaked lintelboards,  
recessed porch.

**45 (Farm)**  
a. House, c.1860/c.1880



Queen Anne style, gable roof,  
2½ stories.  
Features: bay window,  
shinglework, cornice brackets,  
paneled entry pilasters, kneewall  
window, distinctive door,  
keystones, enriched entablature,  
stained glass, distinctive  
chimney.  
Related garage, shed.  
b. Granary, c.1880  
c. Chicken Coop, c.1900  
d. Barn, 1928/1955  
Features: hoist, hay door.  
e. Shed, c.1940

**46 (Farm)**  
a. House, c.1845  
Greek Revival style, sidehall  
plan, 1½ stories.  
Features: sidelights, enriched  
entablature, paneled entry  
pilasters, paneled corner  
pilasters.  
b. Shed, c.1880  
c. Ground Stable Barn, c.1925  
Gambrel roof.  
Features: transom, hoist, cupola,  
hay door.  
d. Shed, c.1940

**47 House, c.1850**  
Sidehall plan, 1½ stories.  
Features: entry entablature,  
sidelights, kneewall window,  
raking window.  
Related carriage barn.

**48 House, c.1875**  
Gable roof, 2 stories.  
Features: distinctive door,  
Gothic Revival porch.  
Related ground stable barn,  
shed.  
Features: hay door, hoist,  
board and batten.

**49 House, c.1875**  
Classic Cottage.  
Features: kneewall window.

**50 House, c.1840**  
Greek Revival style,  
Georgian plan.  
Features: corner pilasters,  
sidelights, entry entablature,  
entry pilasters.  
Related carriage barn,  
ground stable barn.  
Features: tiled silo, hay door.

**51 House, c.1845**  
Vernacular-Greek Revival  
style, sidehall plan,  
1½ stories.  
Features: entry entablature,  
distinctive interior, recessed  
porch, Italianate door.  
Related shed.

**52 House, c.1870**  
Classic Cottage.  
Features: kneewall window,  
Gothic Revival porch.  
Related garage.

**53 Ground Stable Barn,**  
c.1935  
Gambrel roof.  
Features: hay door,  
ventilators, tiled silo.

**54 Late Bank Barn, c.1885**



Features: peaked  
lintelboards, hay door.  
Related house, chicken coop,  
granary.  
Features: Gothic Revival  
porch, kneewall window,  
board and batten.

**55 (Farm)**  
a. House, 1854  
Classic Cottage.  
Features: entry entablature,  
round window, distinctive  
chimney, distinctive door.  
b. Garage, c.1920  
Features: rafter tails.  
c. Granary, c.1860  
d. Privy, c.1890  
e. Pighouse, c.1880  
f. Carriage Barn, c.1870  
Features: hay door.  
g. Chicken Coop, c.1980  
h. Chicken Coop, c.1980  
i. Late Bank Barn, c.1910/c.1945  
j. Silo, 1963  
k. Silo, 1982

**56 House, c.1840/1938**  
Vernacular-Greek Revival  
style, wood shingle, Classic  
Cottage.  
Features: continuous  
architecture, sidelights,  
Gothic Revival porch.

**57 House, c.1860/1985**  
Gable roof, 1½ stories.  
Related barn, gazebo.  
Features: hay door, historic  
move.

**58 House, c.1867**  
Gable roof, 1½ stories.  
Features: historic move,  
Queen Anne porch, Colonial  
Revival porch.

**59 Carriage Barn, c.1870**  
Gable roof, 1½ stories.  
Features: hay door.  
Related house.  
Features: kneewall window,  
porch.

**60 Chicken Barn, c.1920**  
Gable roof, 2 stories.  
Features: monitor, rafter  
tails.  
Related chicken coop.

**61 House, c.1860/c.1920**  
Gable roof, 1½ stories.  
Features: recessed porch.

**62 House, c.1880**  
Gable roof, 1½ stories.

**63 House, c.1860**  
Classic Cottage.  
Features: door hood.

**64 House, c.1880**  
Classic Cottage.

**65 (Farm)**  
a. House, c.1885  
Queen Anne-Eastlake style,  
Tri-Gable Ell, 2½ stories.  
Features: distinctive lintelboards,  
round window, peaked  
lintelboards, cornice brackets,  
Italianate porch, enriched frieze,  
distinctive door, gablescreen.  
b. Barn, c.1885  
Features: belvedere, hoist, hay  
door, round arch window,  
peaked lintelboards, peaked entry  
lintel.  
c. Barn, c.1890  
Features: bank barn, hay door.  
d. Carriage Barn, c.1890  
e. Shed, c.1880  
f. Barn, c.1890  
g. Shed, c.1910

66 House, c.1800/c.1825



Georgian plan.  
Features: Colonial Revival porch, sidelights.  
Related camp, camp, camp.

67 House, c.1810  
Federal style, stucco, Georgian plan.  
Features: sidelights, triangular gable fan.  
Related store, shed, shed.

68 House, c.1880  
Vernacular-Italianate style, I-House.  
Features: Italianate porch, cornice brackets, distinctive door.  
Related stable, granary, barn.  
Features: cupola.

69 House, c.1880  
I-House.  
Features: Gothic Revival porch.  
Related chicken coop, barn.

70 House, c.1815  
Vernacular-Federal style, Georgian plan.  
Features: distinctive chimney, reveals, entry fan.  
Related garage.  
Features: rafter tails.

72 House, c.1935  
Gable roof, 1½ stories.  
Features: Colonial Revival porch.

73 House, c.1935/c.1965  
Gable roof, 1½ stories.  
Features: door hood.  
Related garage.

74 House, c.1940  
Gable roof, 1½ stories.  
Features: Colonial Revival porch, sidelights, door hood.  
Related garage.

75 House, c.1880  
Gable roof, 2 stories.  
Features: bay window, Queen Anne window, cornice caps, Italianate porch.

76 (Farm)  
a. House, c.1850  
Classic Cottage.  
Features: Queen Anne porch, kneewall window, distinctive door, stained glass, continuous architecture.  
b. Granary, c.1870  
c. Pighthouse, c.1880  
d. Corn Crib, c.1920  
e. Barn, c.1910  
Features: hay door.  
f. Shop, c.1920  
g. Garage, c.1945

77 House, c.1800  
Cape Cod.  
Features: Queen Anne porch, transom, reveals, entry fan.  
Related barn, carriage barn.  
Features: hay door, peaked entry lintel.

78 House, c.1855  
Vernacular-Greek Revival style, Classic Cottage.  
Features: transom, sidelights, entry pilasters, porch.  
Related barn.

79 (Farm)  
a. House, c.1880  
Features: Gothic Revival porch.  
b. Carriage Barn, c.1880  
Features: hay door.  
c. Chicken Barn, c.1910  
d. Early Barn, c.1880

80 House, c.1840  
Vernacular-Greek Revival style, sidehall plan, 1½ stories.  
Features: sidelights, distinctive door, entry entablature.  
Related barn.  
Features: hay door, board and batten.

81 (Farm)  
a. House, c.1793/c.1830  
Federal/Greek Revival style, Georgian plan.  
Features: triangular gable fanlight, sidelights, entry entablature, entry pilasters, recessed porch, continuous architecture.  
b. Carriage Barn, c.1880  
c. Granary, c.1860  
d. Sugarhouse, c.1875  
Features: monitor.  
e. Bank Barn, c.1880  
Features: hay door.  
f. House, c.1850  
Gable roof, 1½ stories.  
Features: distinctive chimney.  
g. Pumphouse, c.1930  
Features: rafter tails.

82 House, c.1925  
Bungalow style, wood shingle, gable roof, 1½ stories.  
Features: Bungalow porch, rafter tails, bay window.  
Related garage.  
Features: rafter tails, wood shingle.

83 School, c.1850  
Gable roof, 1½ stories.

84 House, c.1850  
Classic Cottage.  
Features: Italianate door, Colonial Revival porch, distinctive chimney, door hood.

85 House, c.1830  
Gable roof, 2½ stories.  
Features: Queen Anne porch.  
Related carriage barn.

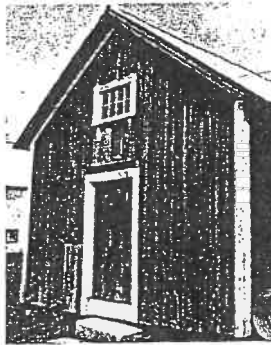
86 House, c.1860/c.1920  
Classic Cottage.

87 House, c.1910  
Foursquare.  
Features: door hood, porch.

88 House, c.1800  
Vernacular-Federal style, Georgian plan.  
Features: sidelights, transom.  
Related garage, carriage barn.

89 (Farm)  
a. House, c.1800  
Federal style, Georgian plan.  
Features: Gothic Revival porch, sidelights, transom, enriched entablature, paneled entry pilasters, corner pilasters, fretwork.  
b. Milkhouse, c.1910  
c. Chicken Coop, c.1930  
d. Granary, c.1890  
e. Corn Crib, c.1910  
f. Ground Stable Barn, c.1925  
Gambrel roof.  
Features: hay door, hoist.  
g. Shed, c.1925  
Features: rafter tails.

90 (Farm)  
a. House, c.1845  
Greek Revival style, Classic Cottage.  
Features: Queen Anne porch, entry entablature, entry pilasters, distinctive door, corner pilasters.  
b. Shed, c.1880  
c. Carriage Barn, c.1875  
Features: hay door, peaked lintelboards, peaked entry lintel.  
d. Granary, c.1880



e. Barn, c.1910  
Features: hay door.  
f. Ground Stable Barn, c.1935/c.1955  
Gambrel roof.  
Features: wood silo, rafter tails, ventilators, hay door.  
g. Shed, c.1910

91 Carriage Barn, c.1885  
Features: belvedere, hay door, historic move.  
Related house, chicken coop, pighthouse.  
Features: Colonial Revival porch, transom, bargeboard, distinctive door, kneewall window.

92 House, c.1810  
Gable roof, 1½ stories.  
Features: transom.  
Related chicken coop.

93 House, c.1840  
Greek Revival style, Classic Cottage.  
Features: sidelights, entry entablature, entry pilasters.  
Related carriage barn, barn, milkhouse.

94 House, c.1830.  
Federal style, Georgian plan.  
Features: distinctive chimney, leaded glass, sidelights, gable fanlight, continuous architecture, reveals, Colonial Revival porch.  
Related silo, school.  
Features: tiled silo, weathervane.

95 House, c.1784  
Gable roof, 1½ stories.

96 House, c.1850  
Greek Revival style, Georgian plan.  
Features: paneled corner pilasters, sidelights, transom, fretwork, polychrome slate.  
Related granary, barn, pighthouse.  
Features: hay door, Queen Anne window.

97 Monument, c.1910  
Features: marble.

98 House, c.1860  
Classic Cottage.  
Features: porch, transom.  
Related barn.  
Features: hoist.

99 House, c.1880  
Classic Cottage.  
Features: Italianate porch, cornice caps.  
Related late bank barn, milkhouse.  
Features: board and batten.

100 (Farm)  
a. House, c.1860  
Features: entry entablature, entry pilasters.  
b. Shed, c.1880  
c. Milkhouse, c.1920  
d. Bank Barn, c.1900  
e. Granary, c.1890  
f. Late Bank Barn, c.1890

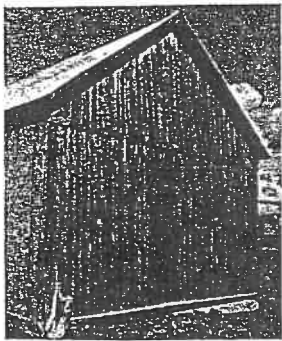
101 House, c.1875  
Gable roof, 2 stories.  
Features: Gothic Revival porch, round arch window, cornice caps, entry entablature, sidelights, raking window.  
Related carriage barn, house.  
Features: hay door, diagonal boarding, hoist, peaked lintelboards.

102 (Farm)  
a. House, c.1885  
Italianate style, gable roof, 2½ stories.  
Features: Italianate porch, cornice brackets, cornice caps, enriched frieze.  
b. Shed, c.1910  
c. Garage, c.1930  
d. Granary, c.1890  
e. Chicken Coop, c.1925  
wood shingle.  
f. Milkhouse, c.1930  
Features: ventilator.

103 House, c.1875  
Classic Cottage.  
Related carriage barn,  
garage.  
Features: hay door, peaked  
entry lintel.

104 (Farm)  
a. House, c.1860  
Classic Cottage.  
Features: entry entablature, door  
hood, marble.  
b. Chicken Coop, c.1910  
c. Carriage Barn, c.1890  
Features: hay door, hoist.  
d. Granary, c.1880  
e. Garage, c.1920  
f. Shed, c.1925  
g. Chicken Coop, c.1920  
Wood shingle.  
h. Ground Stable Barn, c.1930  
Gambrel roof.  
Features: ventilators, weather-  
vane, hay door.

105 Early Barn, c.1875



Features: transom.  
Related house.

106 House, c.1870  
I-House.  
Features: cornice caps,  
Colonial Revival porch,  
kneewall window.  
Related garage, carriage  
barn.  
Features: hay door.

107 House, c.1900  
Foursquare.  
Features: distinctive dormer,  
Colonial Revival porch.

108 Office, c.1930  
Colonial Revival style, brick,  
gable roof, 2 1/2 stories.  
Features: distinctive dormer,  
splayed lintels, marble,  
keystone, distinctive door,  
entry pilasters, sidelights,  
round arch window, broken  
pediment, name inscription.

109 Hospital, c.1930  
Colonial Revival style, brick,  
gable roof, 2 1/2 stories.  
Features: distinctive dormer,  
enriched cornice, quoins,  
transom, entry pilasters,  
round arch window, splayed  
lintels, keystones, marble,  
corner pilasters, Colonial  
Revival porch, name  
inscription, leaded glass.

110 House, c.1925  
Foursquare.  
Features: distinctive dormer,  
door hood.  
Related garage.

111 (Farm)  
a. House, 1861  
Gothic Revival style, brick,  
pavilion with ells.  
Features: limestone, bargeboard,  
Gothic Revival porch, sidelights,  
transom, marble, Italianate  
porch.  
b. Carriage Barn, c.1885  
c. Granary, c.1880  
d. Shed, c.1910  
Features: hoist, hay door.  
e. Pumphouse, c.1950

112 (Farm)  
a. House, c.1890

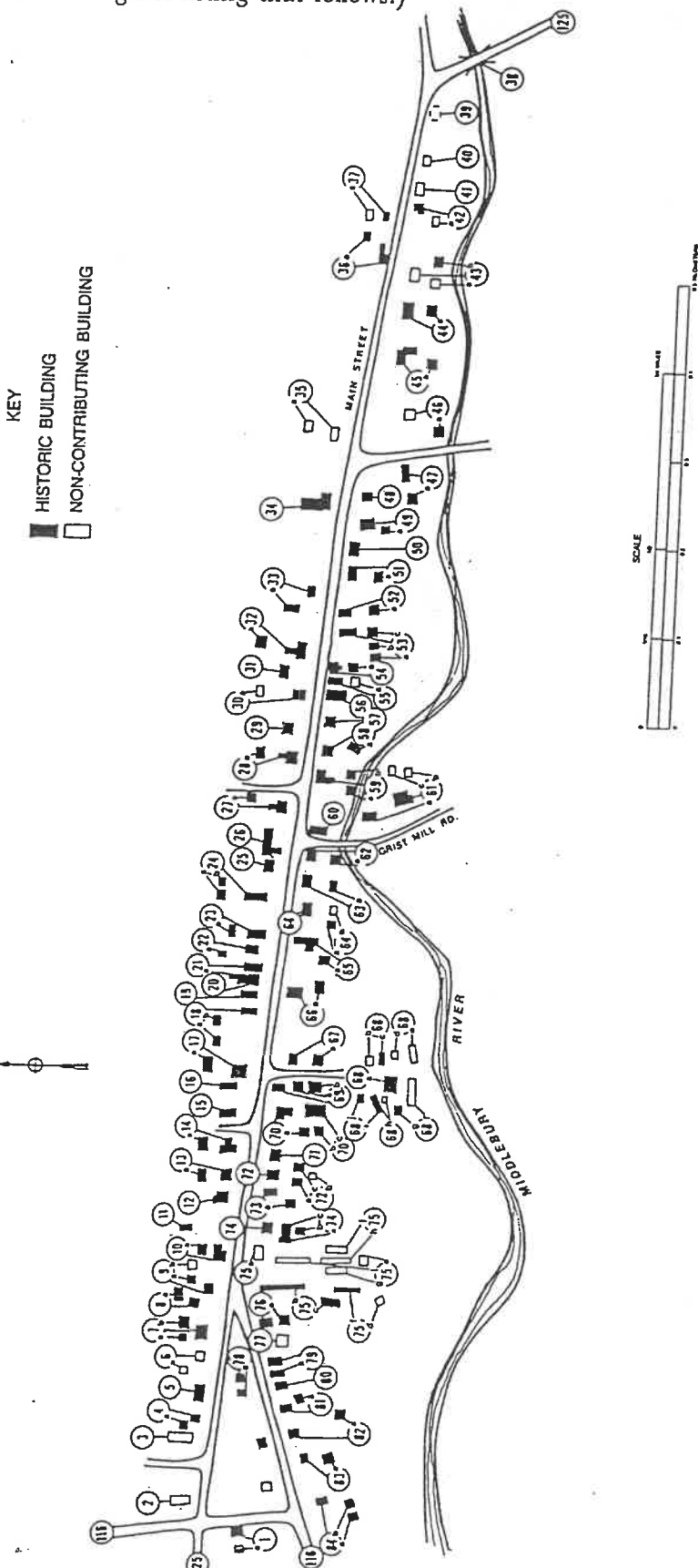


Gable roof, 2 1/2 stories.  
Features: cornice caps.  
b. Chicken Coop, c.1925  
c. Shed, c.1920  
d. Shed, c.1925  
e. Shed, c.1950  
f. Barn, c.1950  
Gambrel roof.  
g. Ground Stable Barn, c.1950  
Gambrel roof.  
Features: hoist, hay door.  
h. Silo, c.1960

113 House, c.1925  
Tudor Revival style, brick,  
jerkinhead roof, 1 1/2 stories.  
Features: bay window,  
applied woodwork, distinctive  
chimney, distinctive door,  
Tudor arch, stickwork.  
Related garage, camp.  
Features: rafter tails.

# A EAST MIDDLEBURY HISTORIC DISTRICT MAP

(Numbers correspond to Register listing that follows.)



## EAST MIDDLEBURY HISTORIC DISTRICT

**A1 Church, 1842**  
Greek Revival style, gable roof, 1 story.  
Features: entry entablature, panelled entry pilasters, corner pilasters, ridge tower, belfry.

**A1a Shop, c.1950**  
Non-contributing due to age.

**A2 House, c.1850**  
Non-contributing due to alterations.

**A3 Fire Station, c.1970**  
Non-contributing due to age.

**A4 House, c.1900**  
Gable roof, 1½ stories.  
Features: Queen Anne window.

**A4a Garage, c.1925**

**A5 House, c.1915**



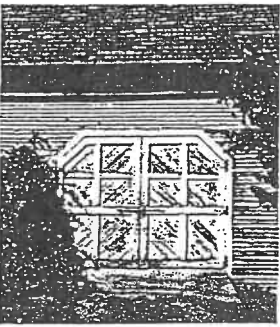
**A5a House, c.1870**  
Gable roof, 1½ stories.  
Features: distinctive door, rafter tails.

**A6 House, c.1950**  
Non-contributing due to age.

**A6a Garage, c.1950**  
Non-contributing due to age.

**A7 House, c.1870**  
Gable roof, 1½ stories.  
Features: continuous architecture, Queen Anne porch.

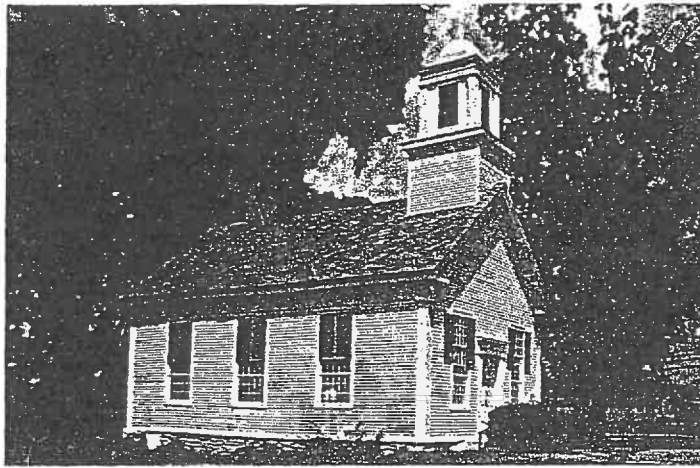
**A7a Carriage Barn, c.1910**



Features: diagonal boarding, distinctive door.

**A7b Granary, c.1900**  
Shingle.

**A8 House, c.1870**  
Gable roof, 1½ stories.  
Features: Queen Anne porch.



*The village of East Middlebury developed early in the nineteenth century around saw and grists mills and an iron forge. By mid-century, when the First Universalist Church (A1, c.1850) was constructed, the village was at the height of its industrial and commercial prosperity. Modest residential development since that time has created the lengthy linear village of today.*

**A8a Garage, c.1940**  
Features: rafter tails.

**A9 House, c.1870**  
Gable roof, 1½ stories.  
Features: bay window, cornice brackets.

**A9a Shed, c.1935**  
Features: rafter tails.

**A9b Garage, c.1965**  
Non-contributing due to age.

**A10 House, c.1870**  
Gable roof, 1½ stories.  
Features: Queen Anne porch.

**A10a Garage, c.1925**

**A11 School, c.1915**  
Hip roof, 1 story.  
Features: bank of windows, distinctive dormer.

**A12 House, c.1970**  
Non-contributing due to age.

**A13 House, c.1850**  
Vernacular-Greek Revival style, sidehall plan, 1½ stories.  
Features: Queen Anne porch, sidelights, entry entablature.

**A13a Carriage Barn, c.1890**

**A14 House, c.1860**



**A14 House, c.1860**  
Tri-Gable Ell, 1½ stories.  
Features: Gothic Revival porch, sidelights, shinglework.

**A14a Carriage Barn, c.1890**

**A15 House, c.1855**  
Vernacular-Greek Revival style, pavilion with ells.  
Features: panelled corner pilasters, entry entablature, cornice caps, Greek Revival porch, round arch window, distinctive chimney.

**A16 House, c.1845**  
Classic Cottage.  
Features: bay window, cornice brackets, full entablature.

**A17 House, c.1878**  
Italianate style, Tri-Gable Ell, 2 stories.  
Features: cornice brackets, round window, enriched cornice, Colonial Revival porch, cornice caps, distinctive door, Queen Anne window.

**A17a Carriage Barn, c.1890**

**A18 House, c.1870**  
Gable roof, 1½ stories.  
Features: Queen Anne porch, cornice brackets, bay window, decorative rafter tails.

**A18a Carriage Barn, c.1880**  
Features: hay door.

**A18b Chicken Coop, c.1930**

**A19 House, c.1870 1885**  
Queen Anne style, jerkinhead roof, 2 stories.  
Features: Queen Anne porch, cornice caps, Queen Anne window, distinctive lintelboards.

**A20 House, c.1870**  
Tri-Gable Ell, 1½ stories.  
Features: Colonial Revival porch.

**A21 House, c.1850**  
Classic Cottage.  
Features: Italianate porch, distinctive door.

**A21a Carriage Barn, c.1870**

**A22 House, c.1845**  
Greek Revival style, sidehall plan, 1½ stories.  
Features: sidelights, entry pilasters, entry entablature, corner pilasters, full entablature, Greek Revival porch, recessed porch.

**A22a Carriage Barn, c.1890**  
Features: hay door, diagonal boarding, weathervane.

**A23 House, c.1875**  
Greek Revival style, gable roof, 1½ stories.  
Features: entry entablature, Greek Revival porch, fieldstone, kneewall window, panelled entry pilasters.

**A23a Carriage Barn, c.1880**  
Features: hay door.

A24 House, c.1850



Greek Revival style, sidehall plan, 1 1/2 stories. Features: sidelights, Greek Revival porch, continuous architecture.

A24a Carriage Barn, c.1890  
Features: hay door.

A24b Carriage Barn, c.1900

A25 House, c.1870  
Non-contributing due to alterations.

A26 House, c.1960  
Non-contributing due to age.

A27 House, c.1835  
Greek Revival style, Georgian plan. Features: triangular gable fanlight, shinglework, entry entablature, entry pilasters, Italianate porch.

A27a Carriage Barn, c.1885  
Features: shinglework.

A28 House, c.1870  
Gable roof, 2 1/2 stories. Features: segmental arch window, Colonial Revival porch, shinglework.

A28a Carriage Barn, c.1880  
Features: polychrome slate, highdrive.

A29 Library, 1923



Neo-Classical Revival style, brick, hip roof, 1 story. Features: monumental portico, flushboard, enriched cornice, full entablature, lintels, entry entablature, entry pilasters, distinctive chimneys, marble.

A30 House, c.1875  
Gable roof, 1 1/2 stories. Features: Queen Anne porch.

A30a House, c.1965  
Non-contributing due to age.

A31 House, c.1850  
Gable roof, 2 stories. Features: Colonial Revival porch, shinglework.

A32 House, c.1810  
Federal style, Georgian plan. Features: gable fanlight, distinctive interior, entry entablature, entry pilasters, carriage bays.

A32a Ground Stable Barn, c.1945  
Gambrel roof.

A33 House, c.1900  
Classic Cottage. Features: cornice caps, door hood, Colonial Revival porch.

A33a Carriage Barn, c.1860  
Features: hay door.

A34 Inn, c.1810  
Georgian plan. Features: bay window, Greek Revival porch, full entablature, entry entablature.

*Listed in the National Register of Historic Places*

A35 House, c.1970  
Non-contributing due to age.

A35a Shed, c.1970  
Non-contributing due to age.

A36 House, c.1850  
Gable roof, 1 1/2 stories. Features: Gothic Revival porch, distinctive door.

A36a Carriage Barn, c.1890  
Features: hay door.

A37 House, c.1830  
Georgian plan. Features: Queen Anne window, sidelights.

A37a Guest Cottage, c.1950  
Non-contributing due to age.

A38 Bridge, 1924



Concrete, deck truss. Features: round arch. *Listed in the National Register of Historic Places*

A39 Mill Foundation, c.1830  
Features: fieldstone.

A40 House, c.1970  
Non-contributing due to age.

A40a Garage, c.1970  
Non-contributing due to age.

A41 House, c.1835/c.1985  
Non-contributing due to alterations.

A41a Garage, c.1985  
Non-contributing due to age.

A42 House, c.1865  
Non-contributing due to alterations.

A42a Garage, c.1965  
Non-contributing due to age.

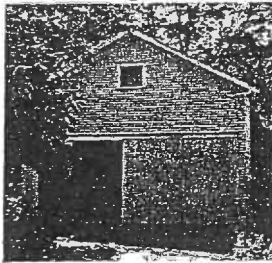
A43 House, c.1965  
Non-contributing due to age.

A43a Garage, c.1975  
Non-contributing due to age.

A43b Shed, c.1940

A44 House, c.1870  
Gable roof, 1 1/2 stories. Features: distinctive dormer, Queen Anne porch, round arch window, kneewall window.

A44a Carriage Barn, c.1900



A45 House, c.1810  
Federal/Greek Revival style, Georgian plan. Features: sidelights, entry pilasters, entry entablature, gable fanlight, distinctive door.

A45a Carriage Barn, c.1890  
Features: hay door.

A46 Barn, c.1870/c.1965  
Non-contributing due to alterations.

A46a Barn, c.1900

A47 House, c.1880  
Gable roof, 2 1/2 stories. Features: round window, cornice caps, bay window.

A47a Carriage Barn, c.1880

A48 House, c.1860  
Gable roof, 2 stories. Features: Greek Revival porch.

A49 House, c.1860  
Gable roof, 2 1/2 stories. Features: Gothic Revival porch, distinctive door.

A49a Carriage Barn, c.1875

A50 House, c.1900  
Gable roof, 1 1/2 stories. Features: Queen Anne porch.

A51 House, c.1860  
Gable roof, 1 1/2 stories. Features: Colonial Revival porch.

A51a Guest Cottage, c.1935  
Gable roof, 1 1/2 stories.

A52 Church, 1889



Queen Anne style, gable roof, 1 1/2 stories. Features: belfry, stained glass, round arch window, gablescreen, porch, cornice brackets, door hood.

A52a House, c.1850  
Gable roof, 1 1/2 stories. Features: enriched entablature, fluted entry pilasters, sidelights, fretwork, transom.

A53 House, c.1835  
Greek Revival style, gable roof, 2 1/2 stories. Features: sidelights, entry pilasters, entry entablature, Colonial Revival porch, Queen Anne window, triangular window.

A53a Bank Barn, c.1860

A53b Shop, c.1860

A53c Guest Cottage, c.1930  
Gable roof, 1 1/2 stories.

A54 House, c.1870  
Gable roof, 1 1/2 stories. Features: Italianate porch.

A54a Garage, c.1880/c.1925

A55 House, c.1880  
Gable roof, 2 stories. Features: distinctive door.

A55a Garage, c.1950  
Non-contributing due to age.

A56 House, c.1845  
Greek Revival style, sidehall plan, 1 1/2 stories. Features: entry entablature, entry pilasters, sidelights, kneewall window, Colonial Revival porch, reveals.

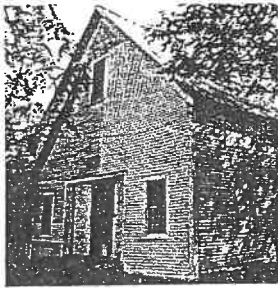
**A57 House, c.1870**  
Classic Cottage.  
Features: distinctive chimney, Gothic Revival arch, continuous architecture.

**A58 House, c.1860**  
Classic Cottage.  
Features: Gothic Revival porch.

**A58a Carriage Barn, c.1870**  
Features: Colonial Revival porch.

**A59 House, c.1880**  
I-House.  
Features: round window, distinctive door, Colonial Revival porch.

**A59a Carriage Barn, c.1880**



**A59b Shed, c.1890**

**70 House, c.1900**  
Gable roof, 2½ stories.  
Features: unusual window.

**A61 Mill, 1879**  
Gable roof, 2½ stories.  
Features: Italianate porch.

**A61a Barn, c.1880**  
Board and batten.  
Features: historic move.

**A61b Industrial Building, c.1955**  
Non-contributing due to age.

**A61c Shed, c.1920**  
Features: rafter tails.

**A62 House, c.1835**  
Gable roof, 1½ stories.  
Features: Gothic Revival porch.

**A62a Garage, c.1980**  
Non-contributing due to age.

**A63 House, c.1825**  
Vernacular-Federal style, I-House.  
Features: bellcast, door hood, distinctive chimney, sidelights.

**A63a Barn, c.1900**  
Board and batten.  
Features: historic move.

**1 House, c.1900**  
Gable roof, 1½ stories.

**A64a Barn, c.1900**

**A64b Shed, c.1950**  
Non-contributing due to age.

**A65 House, c.1845**  
Sidehall plan, 1½ stories.  
Features: bay window, entry entablature, sidelights, entry pilasters.

**A66 House, c.1860**  
Gable roof, 1½ stories.  
Features: entry entablature.

**A66a Carriage Barn, c.1880**  
Features: hay door.

**A67 House, c.1905**  
Classic Cottage.  
Features: historic move.

**A67a Carriage Barn, c.1880**

**A68a Mill, c.1925/1983**



Gable roof, 1 story.

**A68b Shed, c.1980**  
Non-contributing due to age.

**A68c Shop, c.1870**  
Features: historic move.

**A68d Mill, c.1950**  
Non-contributing due to age.

**A68e Shed, c.1975**  
Non-contributing due to age.

**A68f Shed, c.1945**  
Non-contributing due to age.

**A68g Shop, c.1925**

**A68h Shop, 1972**  
Non-contributing due to age.

**A68i Shop, c.1940/1951**

**A68j Shed, c.1925**

**A69 Store, c.1835**  
Greek Revival style, brick, gable roof, 2½ stories.  
Features: hoist, triangular gable fanlight, lintels, kneewall window, sidelights.

**A69a Carriage Barn, c.1890**  
Features: hay door.

**A69b Carriage Barn, c.1870**  
Features: hay door.

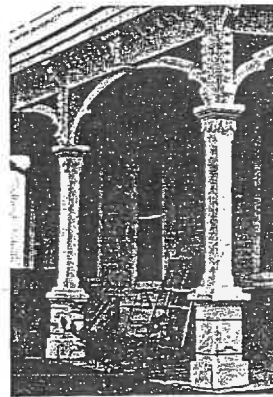
**A70 House, c.1850**  
Classic Cottage.  
Features: door hood, entry entablature, entry pilasters, corner pilasters.

**A70a Carriage Barn, c.1880**

**A70b Garage, c.1910**

**A70c Barn, c.1900/1960**

**A71 House, c.1875**



Features: Italianate porch, keystone, enriched cornice, distinctive door.

**A72 House, c.1845**  
Greek Revival style, Classic Cottage.  
Features: entry pilasters, entry entablature, Queen Anne porch, rafter tails.

**A72a Carriage Barn, c.1870**

**A72b Shed, c.1930/1945**  
Non-contributing due to alterations.

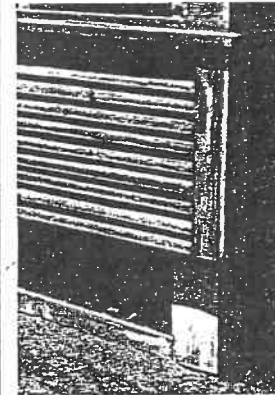
**A72c Shed, c.1925**

**A73 House, c.1845**  
Vernacular-Greek Revival style, Classic Cottage.  
Features: bay window, entry pilasters, porch.

**A73a Guest Cottage, c.1930**  
Gable roof, 1½ stories.

**A73b Garage, 1983**  
Non-contributing due to age.

**A74 House, c.1885**



Gable roof, 1½ stories.  
Features: round window, Italianate porch, cornice brackets, enriched frieze, cornice caps.

**A74a Carriage Barn, 1898**  
Features: hay door, weathervane

**A74b Chicken Coop, c.1900**

**A74c Chicken Coop, c.1920**

**A75a store, 1956**  
Non-contributing due to age.

**A75b Shed, c.1940**  
Features: door hood.

**A75c Shed, c.1940**

**A75d Shed, 1959**  
Non-contributing due to age.

**A75f Shed, c.1950**  
Non-contributing due to age.

**A75f Shed, c.1940**  
Features: rafter tails.

**A75g Shed, c.1950**  
Non-contributing due to age.

**A75h Shed, c.1950**  
Non-contributing due to age.

**A75i Shed, c.1955**  
Non-contributing due to age.

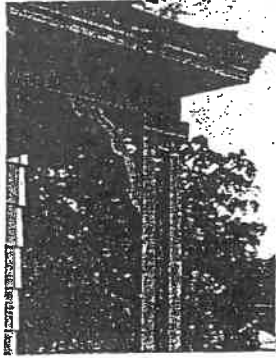
**A75j Shed, c.1960**  
Non-contributing due to age.

**A76 House, c.1915**  
Bungalow style, wood shingle, gable roof, 1½ stories.  
Features: rafter tails, Bungalow porch.

**A76a Garage, c.1915**  
Bungalow style, wood shingle.  
Features: rafter tails.

**A77 House, c.1895**  
Non-contributing due to age.

A78 House, c.1865



Classic Cottage.

A78a Carriage Barn, c.1885  
Features: hay door.

A79 House, c.1915  
Vernacular-Bungalow style,  
hip roof, 1 1/2 stories.  
Features: rafter tails,  
Colonial Revival porch.

A79a Garage, c.1915  
Hip roof.

A80 House, c.1900  
Gable roof, 1 1/2 stories.  
Features: porch, kneewall  
window.

A81 House, c.1905  
Gable roof, 1 1/2 stories.  
Features: Colonial Revival  
porch.

A81a Guest Cottage, c.1950  
Non-contributing due to age.

A82 House, c.1905  
Gable roof, 1 1/2 stories.  
Features: Colonial Revival  
porch.

A82a House, c.1970  
Non-contributing due to age.

A83 House, c.1875  
Gable roof, 1 1/2 stories.

A83a Garage, c.1940  
Features: monitor.

A84 House, c.1885  
Gable roof, 1 1/2 stories.  
Features: cornice caps,  
shinglework, Colonial  
Revival porch.

A84a Chicken Coop, c.1920

A84b Carriage Barn, c.1880

A85 House, c.1968  
Non-contributing due to age.

A86 House, c.1860  
Vernacular-Greek Revival  
style, pavilion with eels.  
Features: entry entablature,  
entry pilasters, enriched  
entablature, Gothic Revival  
porch.

