

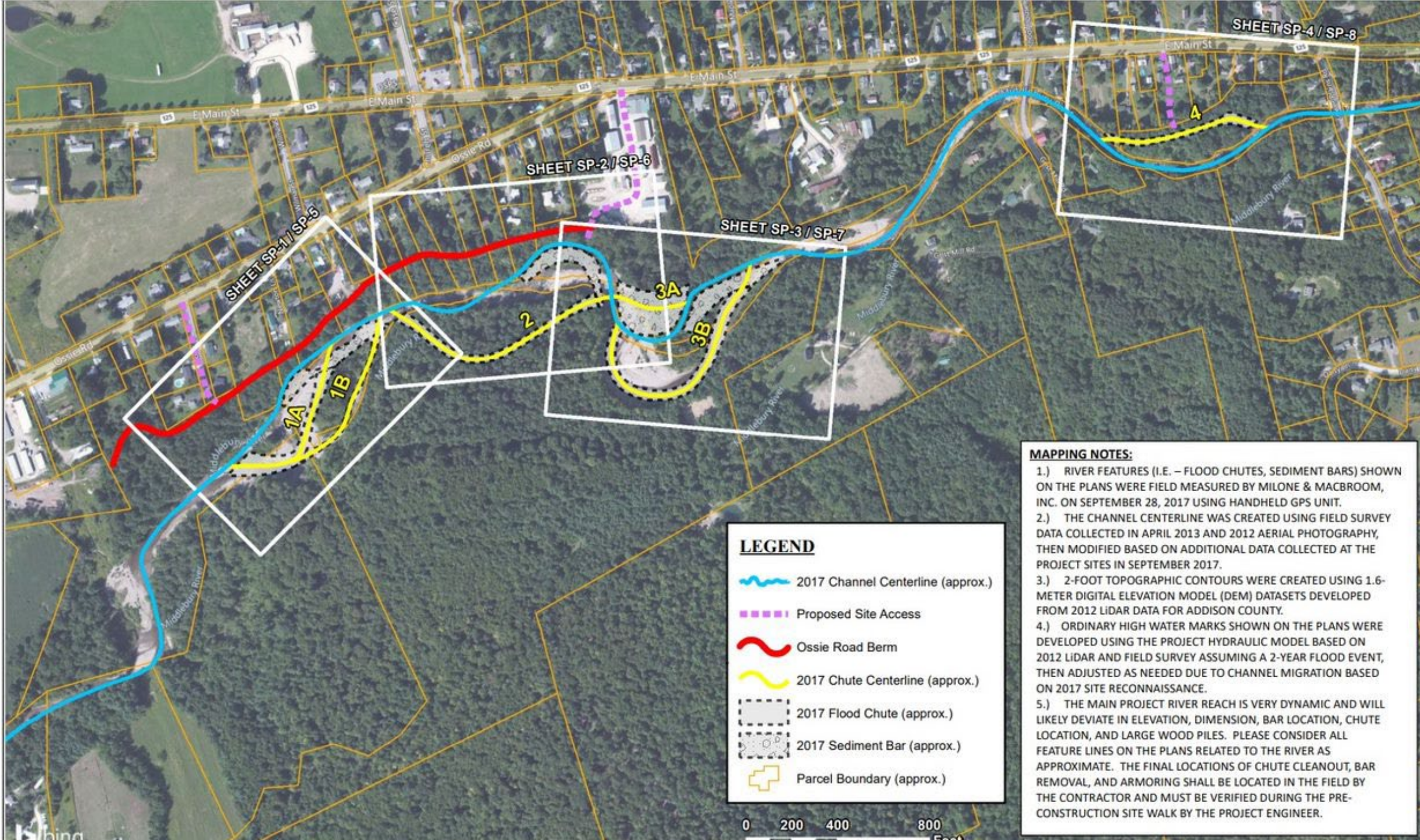
# Flood Resiliency Project

Presentation by Amy Sheldon, Landslide, Inc.

On efficacy of flood mitigation efforts during July 9-11, 2023 storm event

6" of rain recorded in East Middlebury over two days





#### MAPPING NOTES:

- 1.) RIVER FEATURES (I.E. – FLOOD CHUTES, SEDIMENT BARS) SHOWN ON THE PLANS WERE FIELD MEASURED BY MILONE & MACBROOM, INC. ON SEPTEMBER 28, 2017 USING HANDHELD GPS UNIT.
- 2.) THE CHANNEL CENTERLINE WAS CREATED USING FIELD SURVEY DATA COLLECTED IN APRIL 2013 AND 2012 AERIAL PHOTOGRAPHY, THEN MODIFIED BASED ON ADDITIONAL DATA COLLECTED AT THE PROJECT SITES IN SEPTEMBER 2017.
- 3.) 2-FOOT TOPOGRAPHIC CONTOURS WERE CREATED USING 1.6-METER DIGITAL ELEVATION MODEL (DEM) DATASETS DEVELOPED FROM 2012 LIDAR DATA FOR ADDISON COUNTY.
- 4.) ORDINARY HIGH WATER MARKS SHOWN ON THE PLANS WERE DEVELOPED USING THE PROJECT HYDRAULIC MODEL BASED ON 2012 LIDAR AND FIELD SURVEY ASSUMING A 2-YEAR FLOOD EVENT, THEN ADJUSTED AS NEEDED DUE TO CHANNEL MIGRATION BASED ON 2017 SITE RECONNAISSANCE.
- 5.) THE MAIN PROJECT RIVER REACH IS VERY DYNAMIC AND WILL LIKELY DEVIATE IN ELEVATION, DIMENSION, BAR LOCATION, CHUTE LOCATION, AND LARGE WOOD PILES. PLEASE CONSIDER ALL FEATURE LINES ON THE PLANS RELATED TO THE RIVER AS APPROXIMATE. THE FINAL LOCATIONS OF CHUTE CLEANOUT, BAR REMOVAL, AND ARMORING SHALL BE LOCATED IN THE FIELD BY THE CONTRACTOR AND MUST BE VERIFIED DURING THE PRE-CONSTRUCTION SITE WALK BY THE PROJECT ENGINEER.

#### LEGEND

-  2017 Channel Centerline (approx.)
-  Proposed Site Access
-  Ossie Road Berm
-  2017 Chute Centerline (approx.)
-  2017 Flood Chute (approx.)
-  2017 Sediment Bar (approx.)
-  Parcel Boundary (approx.)

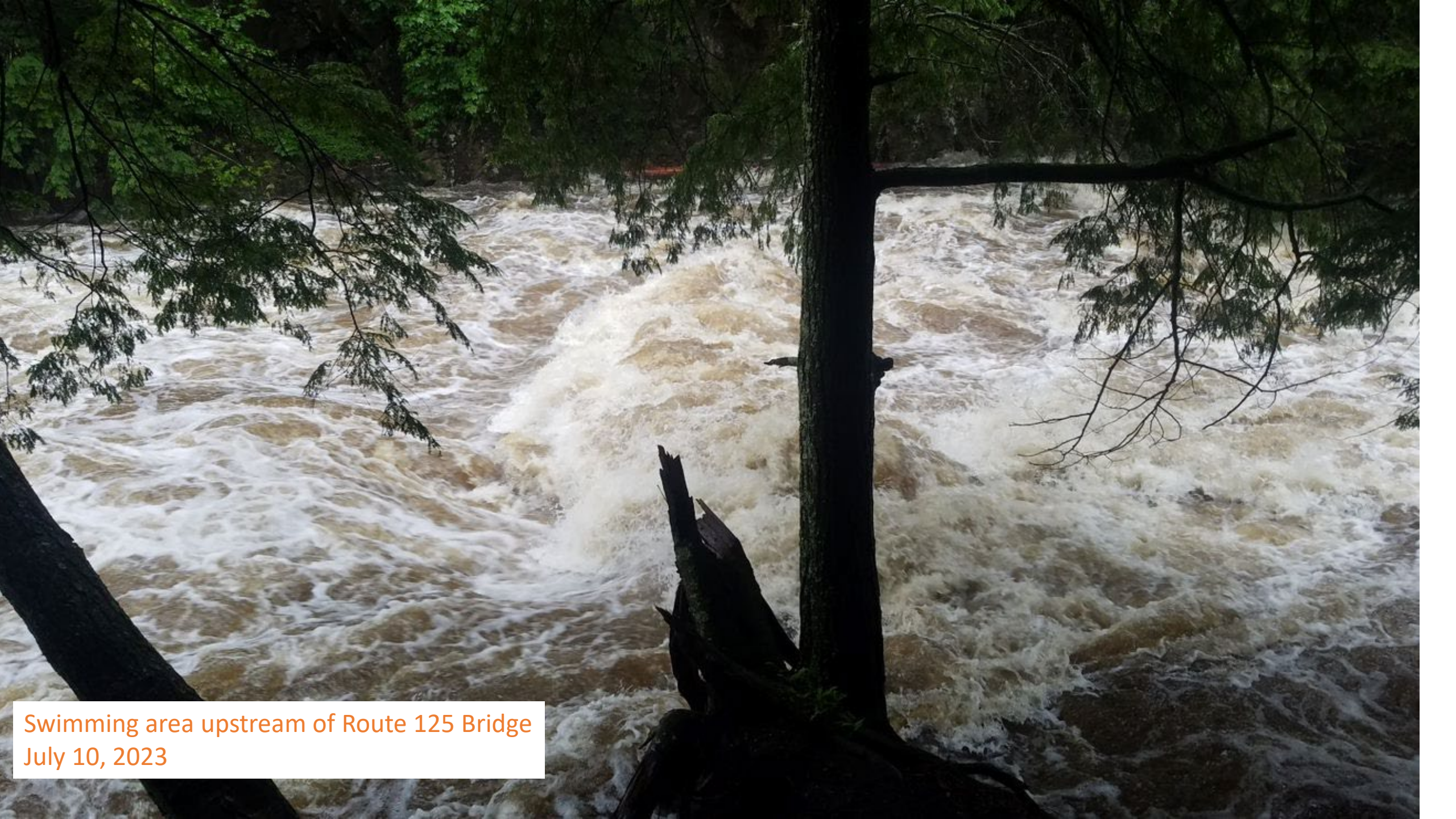
0 200 400 800  
Feet





Swimming area upstream of Route 125 Bridge  
July 10, 2023





Swimming area upstream of Route 125 Bridge  
July 10, 2023





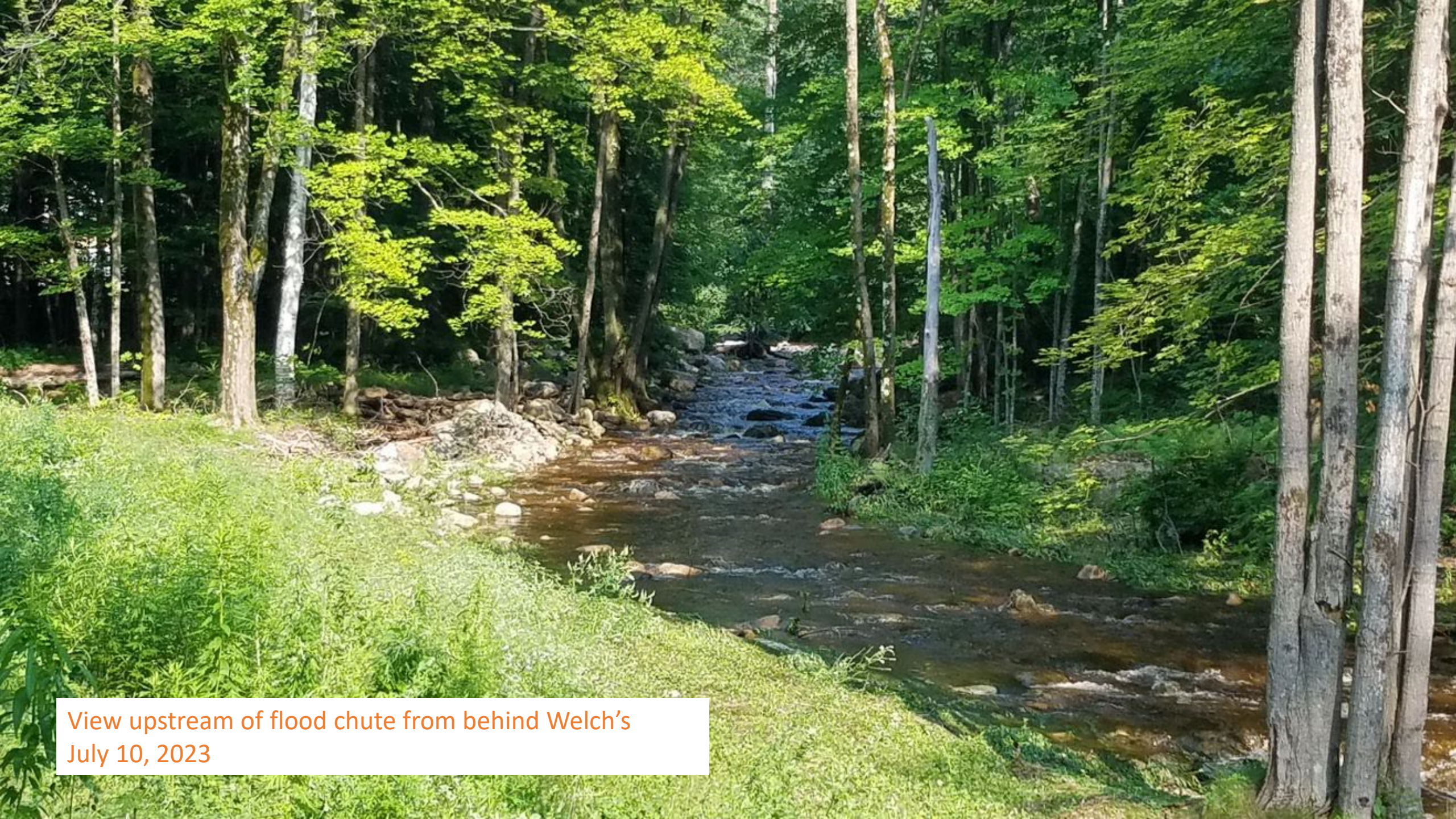
View downstream from Route 125 Bridge  
July 10, 2023



View upstream of flood chute from behind Welch's  
July 10, 2023







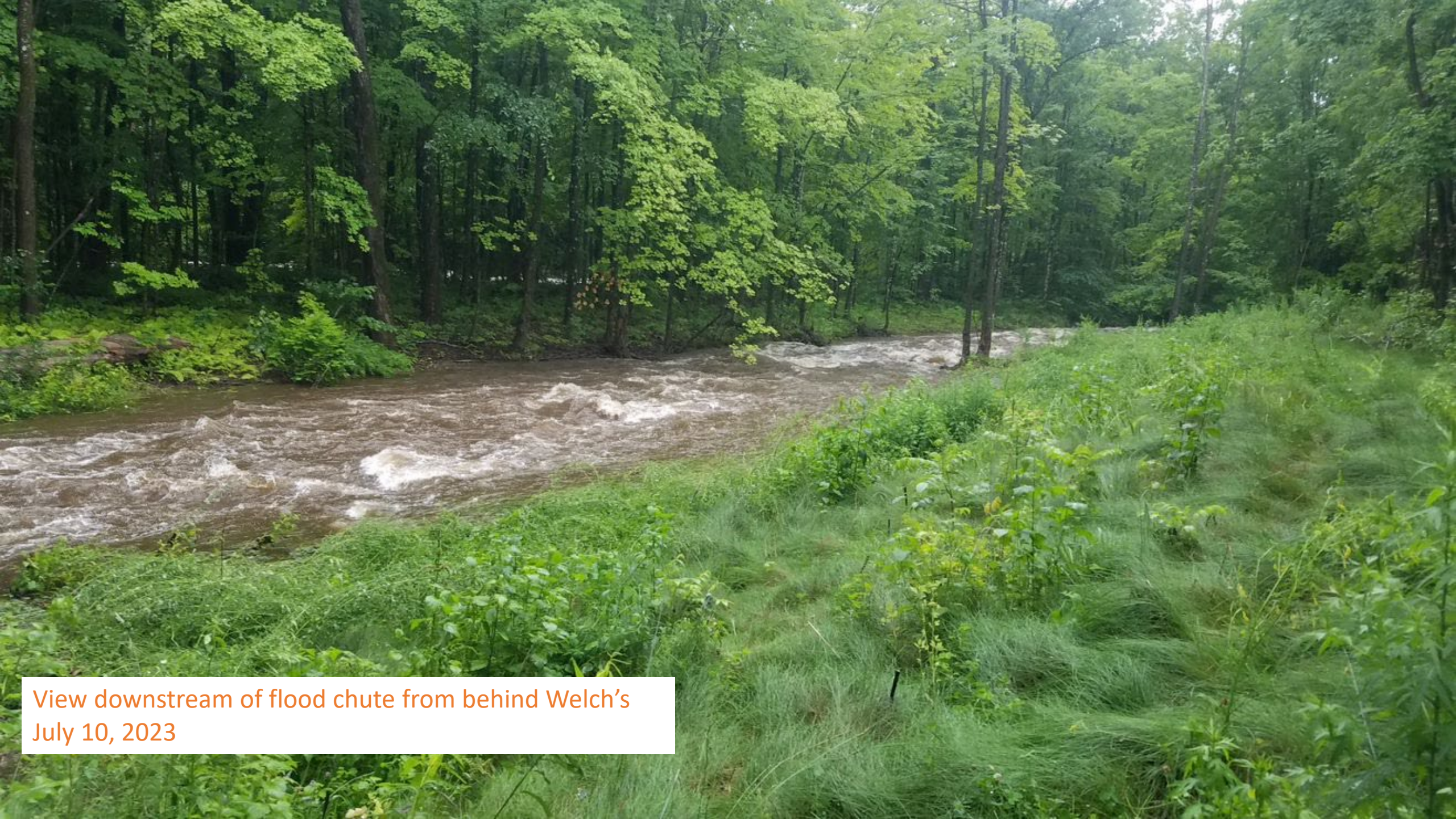
View upstream of flood chute from behind Welch's  
July 10, 2023



View of flood chute from behind Welch's  
July 10, 2023

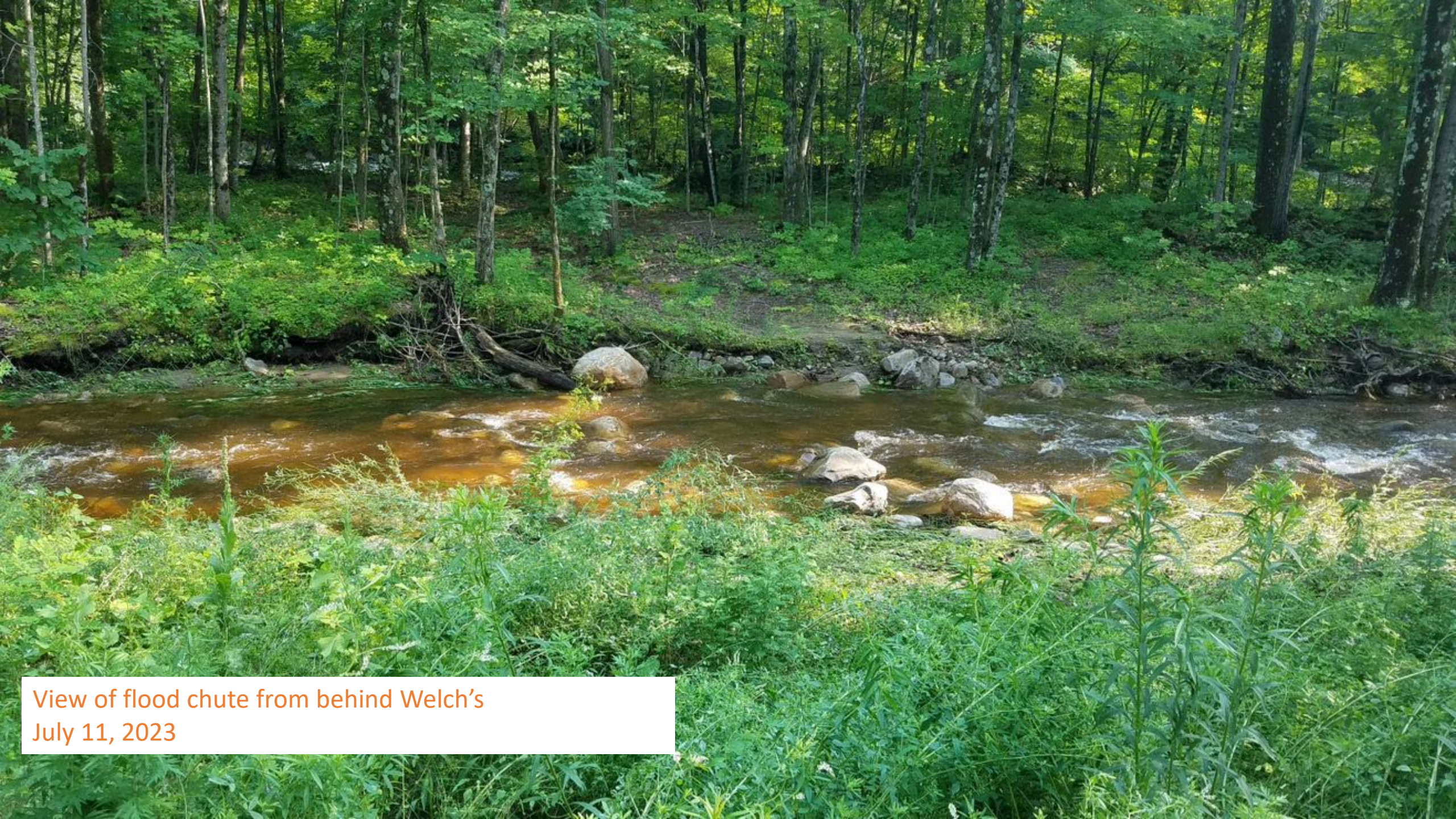






View downstream of flood chute from behind Welch's  
July 10, 2023





View of flood chute from behind Welch's  
July 11, 2023



View downstream from Grist Mill Bridge  
July 10, 2023







View downstream from Grist Mill Bridge  
July 10, 2023



View downstream from Grist Mill Bridge  
July 10, 2023

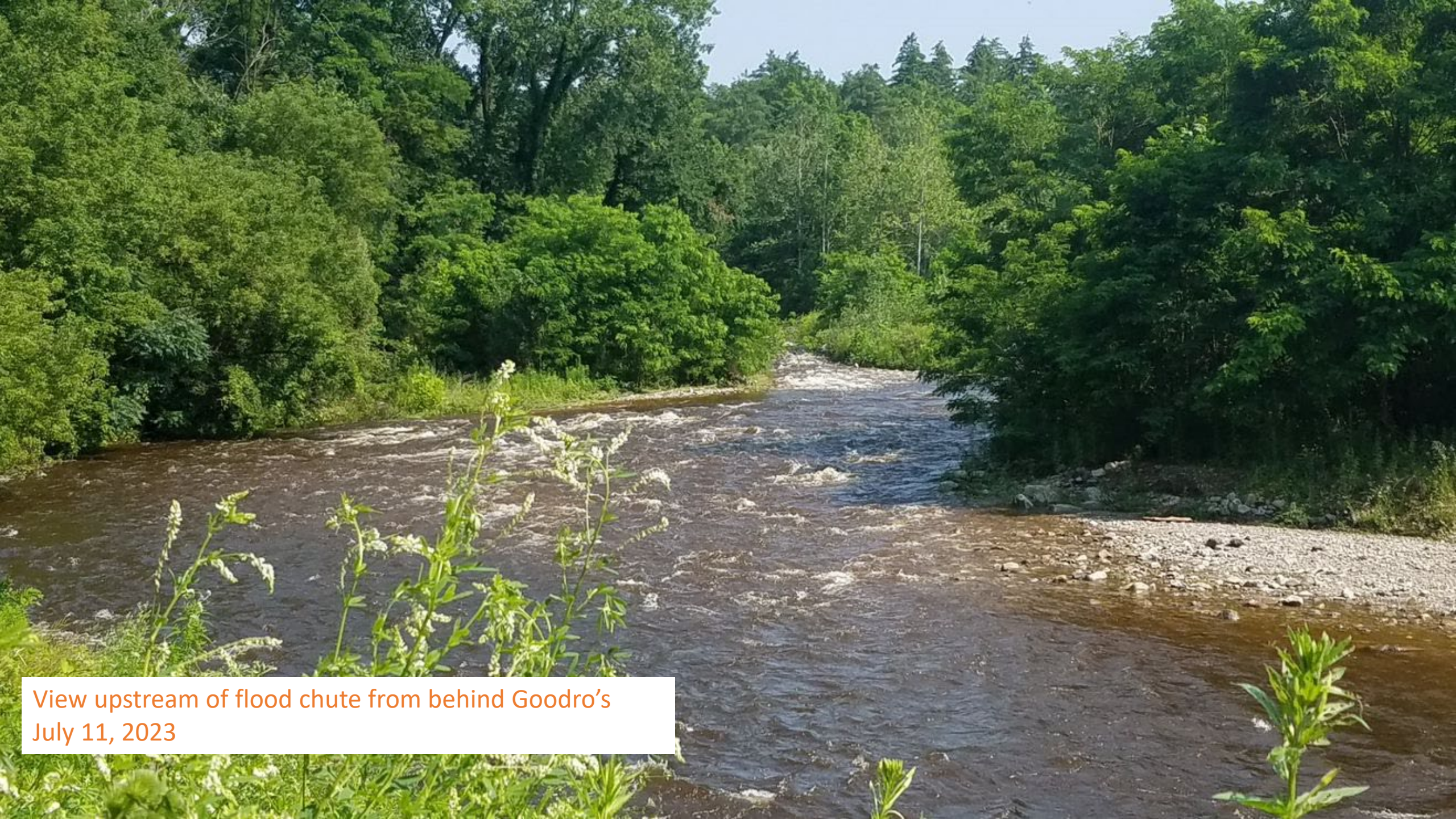






View upstream of flood wall and main channel from behind Marcus', July 11, 2023





View upstream of flood chute from behind Goodro's  
July 11, 2023





View upstream of main channel from downstream of Goodro's, July 11, 2023





View downstream of main channel and flood chute from behind Murray's, July 11, 2023





View upstream of main channel from behind Murray's,  
July 11, 2023