

Emerald Ash Borer in Vermont

As of August 2021,
EAB has been found in Middlebury.
Learn ash tree identification and
signs of this invasive pest!

Emerald ash borer (EAB) was first detected in Vermont in 2018, and is now present in 35 states and 5 Canadian provinces. Vermont will lose over 99% of our native green, white, and black ash trees.



Do you have an ash tree?

- Opposite branches
- Thick twigs
- Diamond shaped bark
- Compound leaves
- Paddle shaped seeds

Is my ash tree infested with EAB?

Signs include:



Woodpecker
activity



Water
sprouts



Thinning
canopy



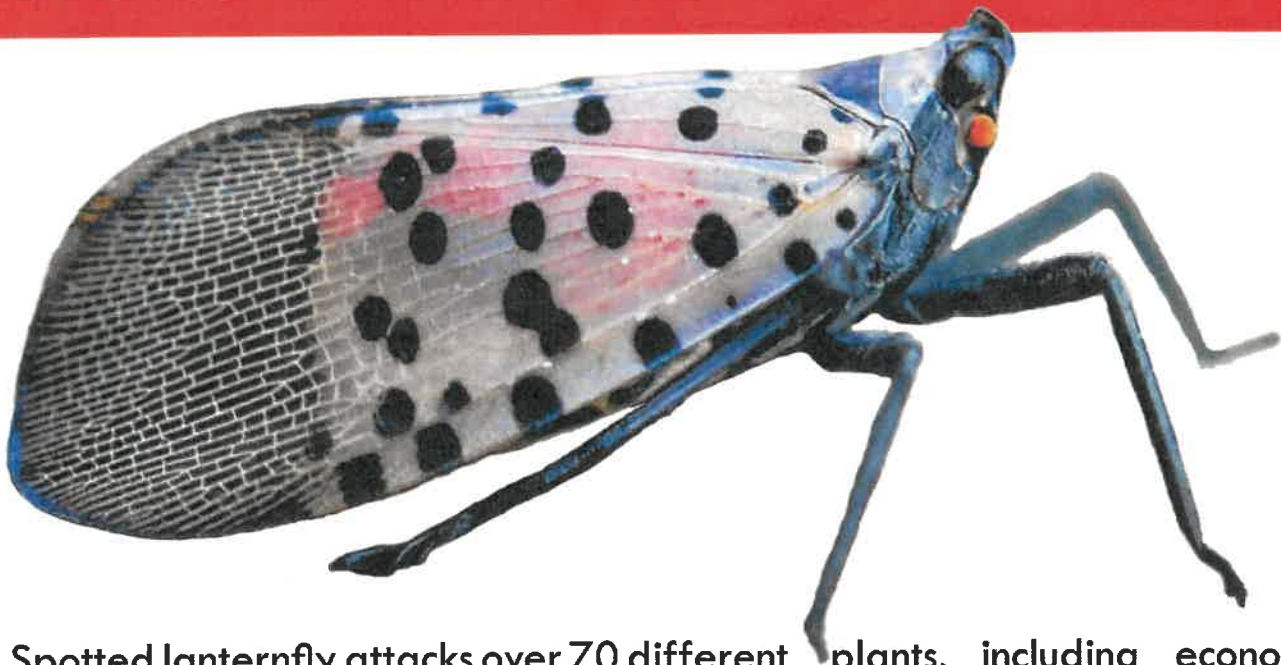
S- shaped
tunnels

Learn. Get Involved. Make a difference. Visit:

VTinvasives.org

Have you seen this insect?

SPOTTED LANTERNFLY



Spotted lanternfly attacks over 70 different plants, including economically important crops (grapes, apples, hops), forest and shade trees (maple, willow, birch), and the invasive tree of heaven.

WE NEED YOUR HELP TO STOP IT BEFORE IT BECOMES ESTABLISHED



Egg masses
(Sept.-June)



Early nymphs
(April-July)



Late nymphs
(July-Sept.)



Adults
(July-Dec.)



HAVE YOU SEEN THIS INSECT? GET A PHOTO OR COLLECT THE INSECT AND REPORT IT!

VTINVASIVES.ORG



VERMONT AGENCY OF AGRICULTURE, FOOD & MARKETS
DEPARTMENT OF FORESTS, PARKS & RECREATION