



PRESENTED TO
Town of Middlebury Selectboard

PRESENTED BY
VTrans and VHB



Meeting with you tonight

- **Wayne Symonds, PE**, Structures Program Manager, VTrans



Current Bridge Condition

- Main Street
 - New hole in the south sidewalk early 2017
 - Continued deterioration on the south fascia
 - Currently safe for vehicles
- Merchants Row
 - New hole in the north sidewalk early 2017
 - Continued deterioration at both fascias
 - Currently safe for vehicles





Current Bridge Condition

- Freeze thaw cycle affects the deterioration of the bridges
- More holes and spalling concrete are possible
- Continued deterioration is a risk to mobility for vehicles, pedestrians, and railroad operations



Emergency Declaration

- First priority is safety of the traveling public and railroad operations
- Allows for planning, design, and construction of temporary bridges or known timeframe rather than an unplanned closure





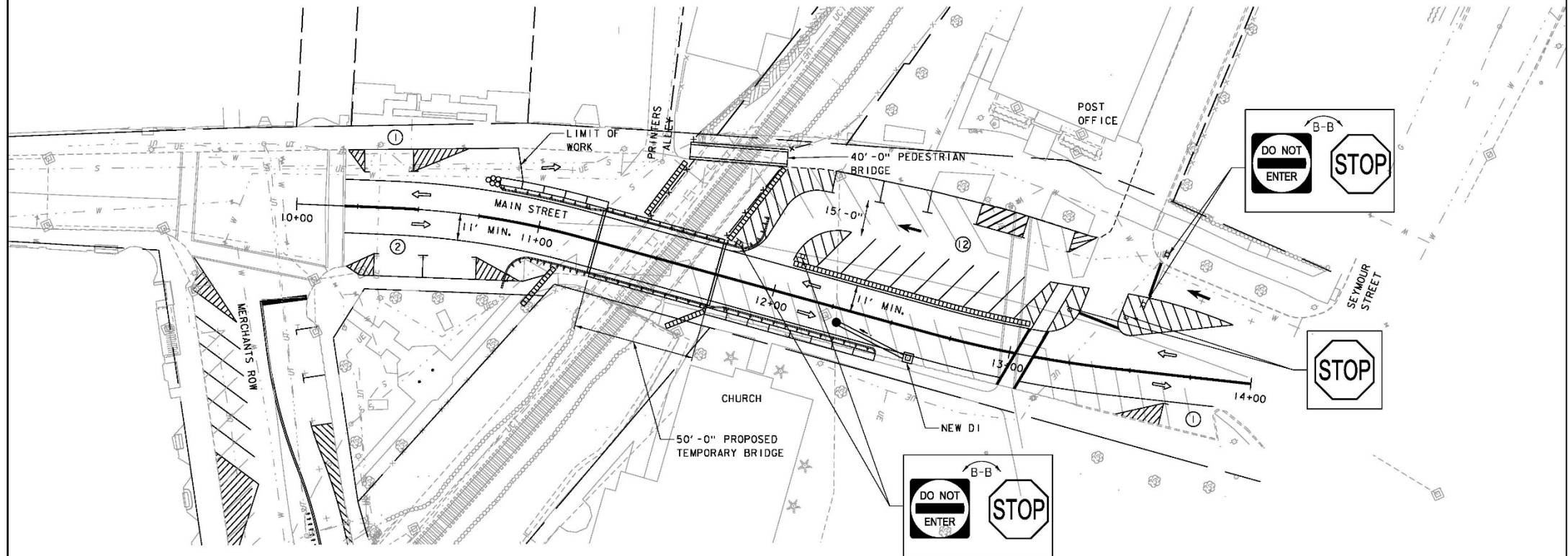
Temporary Bridges

- VTrans inventory of Mabey bridge temporary bridges
- Lightweight steel truss modular bridges



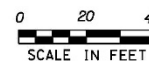
Main Street

- 2 lanes, total 24-FT wide
- Approximately 50-FT long

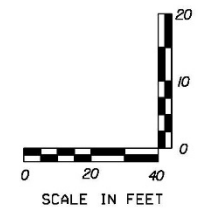
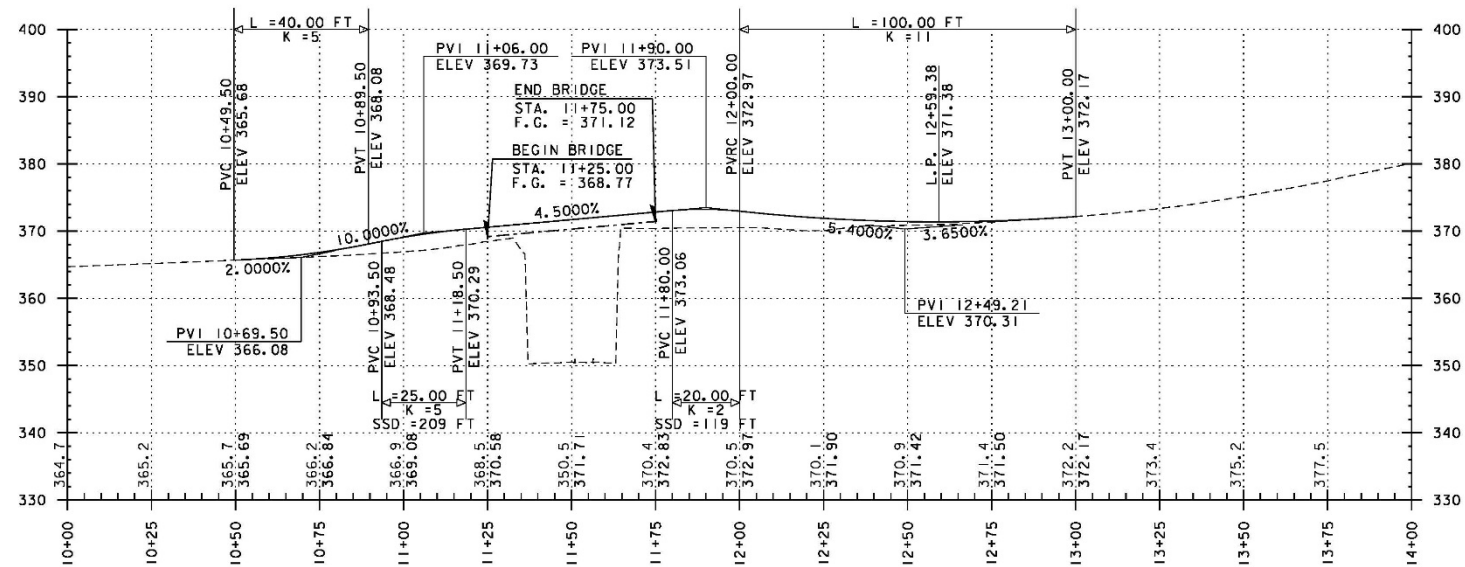


NOTES:

- MAINTAIN TWO WAY TRAFFIC ON MAIN STREET.
- RESTRICT SIDEWALK ACCESS SOUTH OF BRIDGE BETWEEN CHURCH AND TRIANGLE PARK.
- PROVIDE PEDESTRIAN BRIDGE NORTH OF TEMPORARY BRIDGE.
- MAIN STREET ON STREET PARKING:
EXISTING = 39
PROPOSED = 16



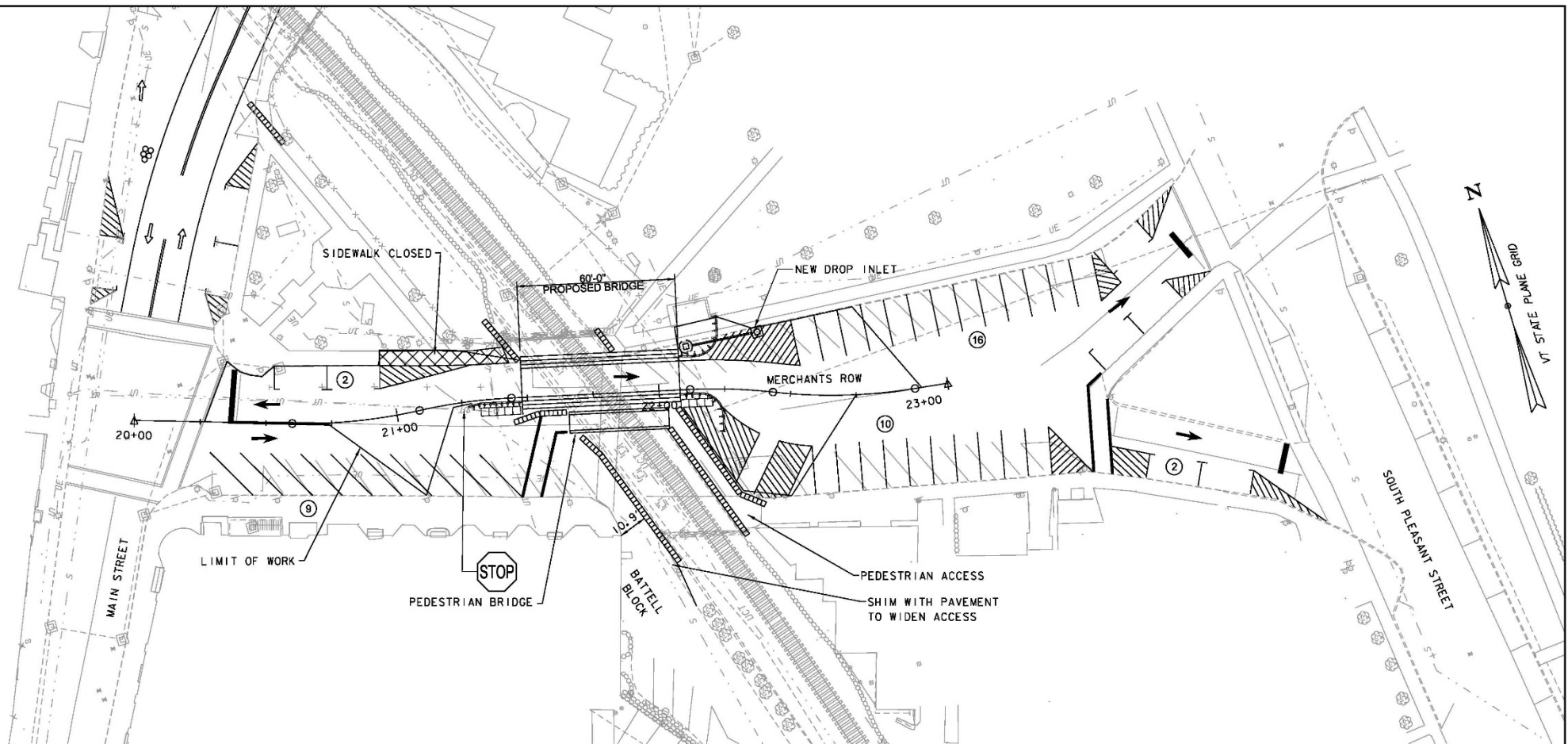
PROJECT NAME:	MIDDLEBURY
PROJECT NUMBER:	EWPS(1)
FILE NAME:	z10g044temp.bridge.main.plt
PROJECT LEADER:	A.P. GUYETTE
DESIGNED BY:	D.M. PECK
MAIN STREET TEMP. BRIDGE PLAN	
PLOT DATE:	3/27/2017
DRAWN BY:	K.C. BARRY
CHECKED BY:	S.E. BURBANK
SHEET	1 OF 4



PROJECT NAME: MIDDLEBURY
PROJECT NUMBER: EWPS(1)



FILE NAME: z:\04044temp_bridge.main.plt.dgn PLOT DATE: 3/27/2017
PROJECT LEADER: A.P. GUYETTE DRAWN BY: K.C. BARRY
DESIGNED BY: D.M. PECK CHECKED BY: S.E. BURBANK
MAIN STREET TEMP. BRIDGE PROFILE SHEET 2 OF 4



Merchants Row

- 1 lanes, total 14-FT wide
- Approximately 60-FT long
- Two-way traffic between Main Street and the bridge
- One-way traffic across the bridge and up to South Pleasant Street

NOTES:

EAST OF BRIDGE: ONE-WAY EASTBOUND. ELIMINATE WESTBOUND MOVEMENTS TO MAIN STREET.

WEST OF BRIDGE: TWO-WAY ONLY TO PROVIDE ACCESS TO AND FROM BATTELL BLOCK.

RESTRICT SIDEWALK ACCESS ALONG PARK ADJACENT TO TEMPORARY BRIDGE.

PROVIDE PEDESTRIAN BRIDGE SOUTH OF TEMPORARY BRIDGE.

DISCONTINUE ACTR BUS SERVICE AT THIS LOCATION.

MERCHANTS ROW ON STREET PARKING.

EXISTING: 40
PROPOSED: 39

PROJECT NAME: MIDDLEBURY

PROJECT NUMBER: EWPS(1)

FILE NAME: temp.bridge_Merchants

PROJECT LEADER: A.P. GUYETTE

DESIGNED BY: D.M. PECK

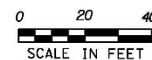
MERCHANTS ROW TEMP. BRIDGE PLAN

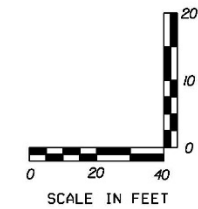
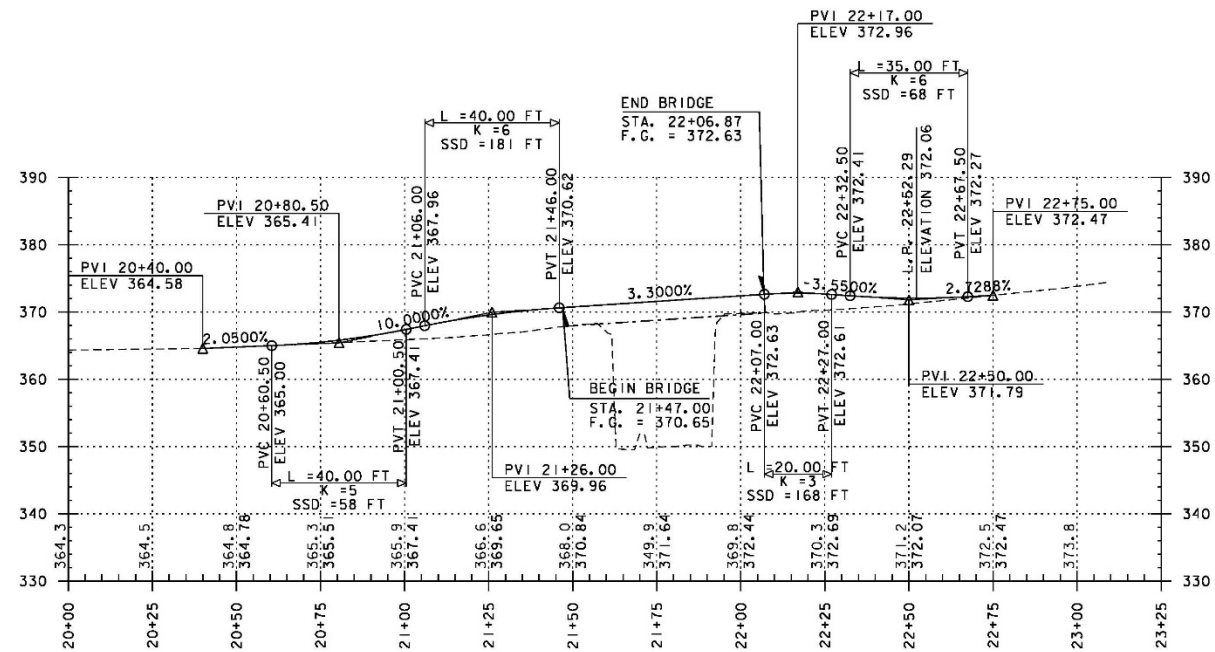
PLOT DATE: 3/27/2017

DRAWN BY: K.C. BARRY

CHECKED BY: E.P. DETRICK

SHEET 3 OF 4





PROJECT NAME: MIDDLEBURY
PROJECT NUMBER: EWPS(I)

FILE NAME: temp_bridge_Merchants	PLOT DATE: 3/27/2017
PROJECT LEADER: A.P. GUYETTE	DRAWN BY: K.C. BARRY
DESIGNED BY: D.M. PECK	CHECKED BY: E.P. DETRICK
MERCHANTS ROW TEMP. BRIDGE PROFILE	SHEET 4 OF 4





Temporary Bridges

- Temporary bridges are designed all legal loads
- Evaluating pedestrian bridge structure options currently
- Traffic Management Plan is being developed
- Costs 95% Federal and 5% State – No additional local share



Installation Schedule

- Preliminary Plans Complete Mid April
- Begin Construction in June
 - 2 weeks of approach/ prep work prior to bridge construction
 - 9 day closure to remove existing and install temp each bridge
 - Main St replaced first
 - Flexibility in Schedule for construction of Merchants Row
 - Complete both by mid- August



Questions?