



# Middlebury Bridge & Rail Project

PRESENTED TO  
Town of Middlebury, VT

PRESENTED BY  
VTrans, VHB, and Kubricky Construction

July 8, 2020





# Community Goals

- Protect the safety of the community: people, property, the environment
- Minimize the project's impact on the vitality of the downtown community: businesses, residents, cultural and religious institutions
- Maintain traffic flow and pedestrian access
- Develop and maintain a credible schedule
- Engage with the local community and facilitate clear communication with all stakeholders



# Team Members



U.S. Department  
of Transportation

**Federal Highway  
Administration**







OTTER CREEK  
TRUSS BRIDGE

Otter Creek

OTTER CREEK  
FALLS

VILLAGE  
GREEN

## Project Overview

### Project Dimensions

Overall length: 3,550 feet

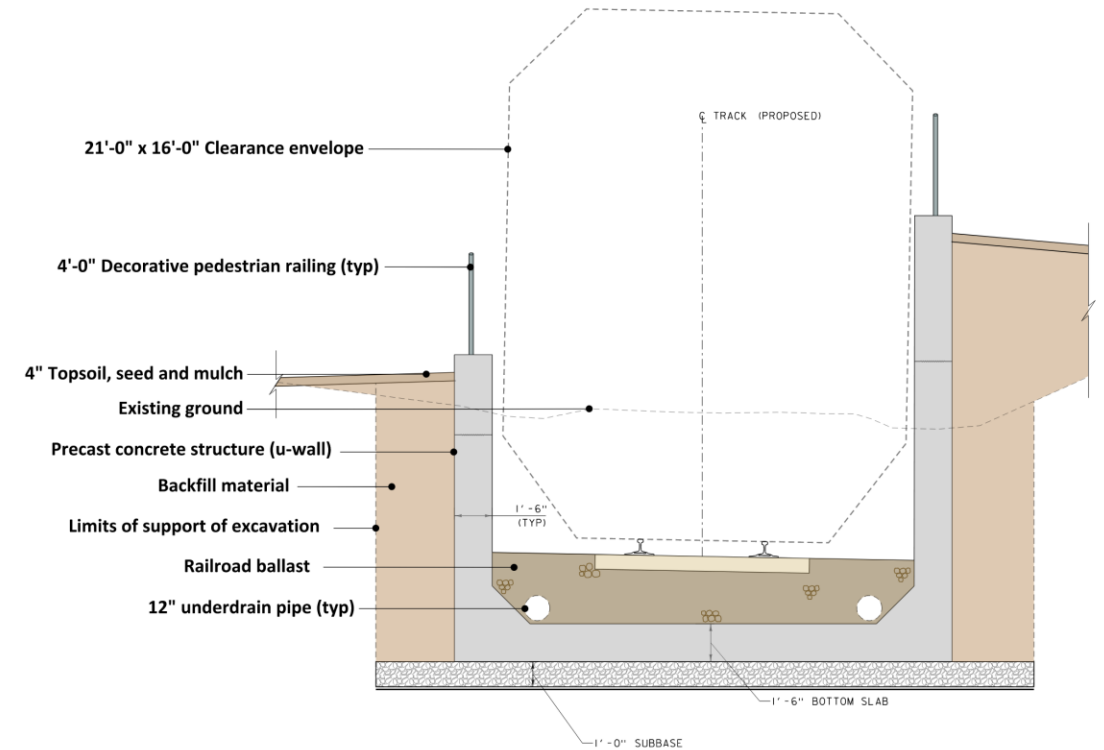
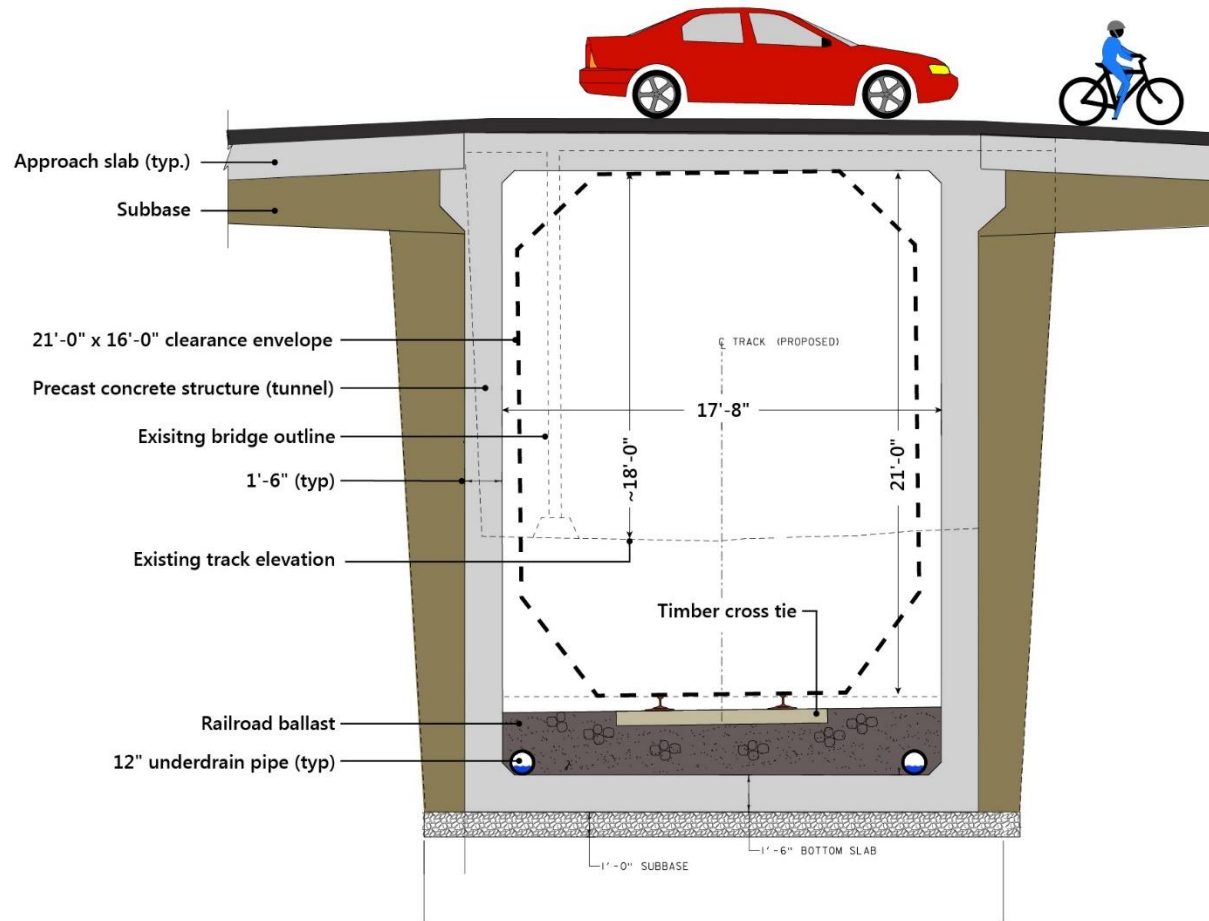
Tunnel length: 360 feet

Construction Area: 6.1 Acres





# New Downtown Tunnel and U-Wall Design







## Current Project Status

- ✓ Early Work Package 1 Construction - 2017
- ✓ Early Work Package 2 Construction - 2018
- ✓ Project Design - 2019
  - **Main Project Construction – July 2019 – July 2021**





# 2018 Project Accomplishments

- Temporary access roads built
- New stormwater drainage system for central downtown constructed
- Electrical and telecommunications lines moved underground



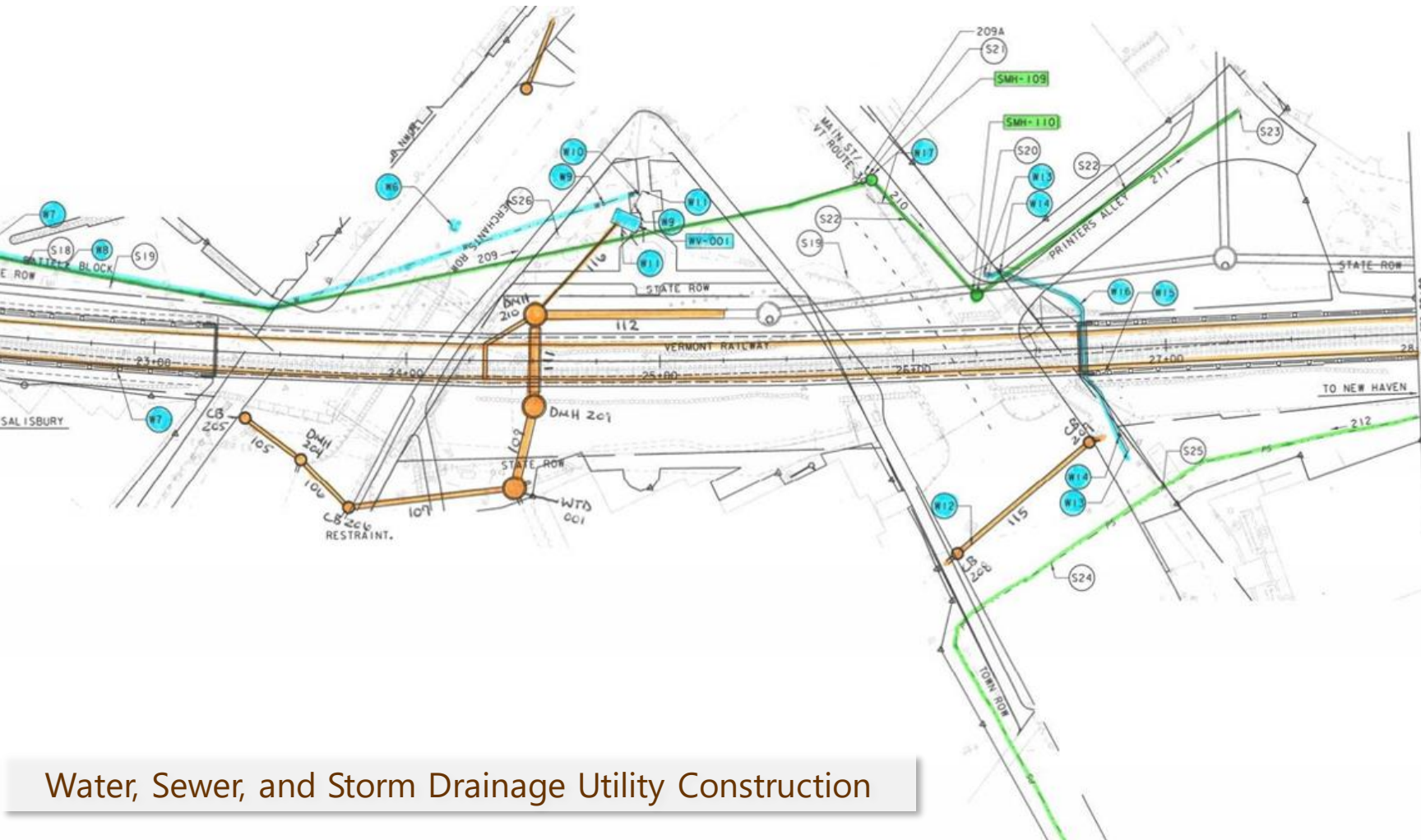


## 2019 Project Accomplishments

- New Town sewer, water and stormwater lines installed downtown
- Ledge underneath Main Street Bridge removed with controlled blasting
- Rail slopes stabilized with extensive support of excavation



## 2019 Downtown Municipal Utility Construction



Water, Sewer, and Storm Drainage Utility Construction





2017

2018

2019

2020

2021

**2019** Support of Excavation Construction





2017

2018

2019

2020

2021



**2019** Support of Excavation Construction



2017

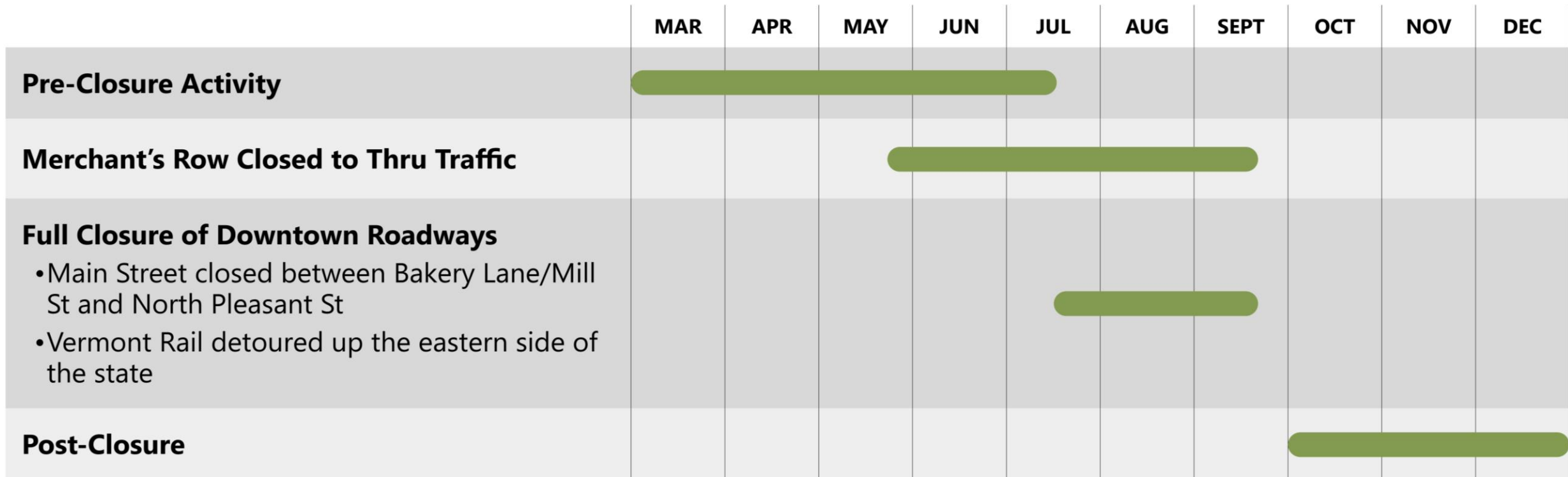
2018

2019

2020

2021

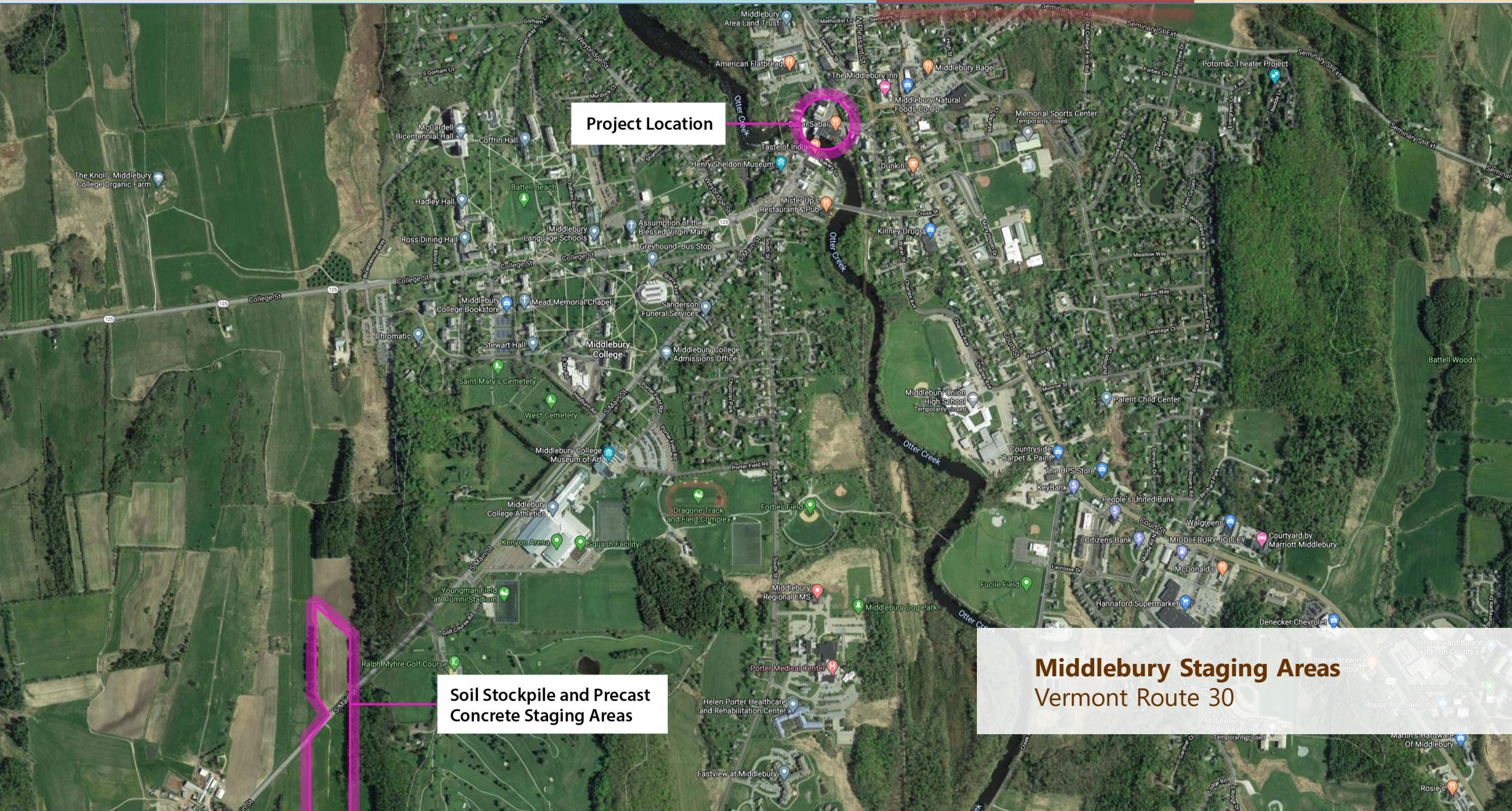
# 2020 Construction Sequence



## Pre-Closure Activities

- Mobilization of equipment and materials
- Set up of Fifield Farm marshaling yards
- Delivery of precast concrete tunnel pieces and u-walls to Fifield Farm
- Crane setup in Triangle Park, Marble Works, and north of Cross Street Bridge
- Continuing excavation and support of excavation





Project Location

Soil Stockpile and Precast  
Concrete Staging Areas

Middlebury Staging Areas  
Vermont Route 30



2017

2018

2019

2020

2021

**2020** Pre-Closure: Fifield Farm Marshalling Yard





2017

2018

2019

2020

2021

## 2020 Pre-Closure: Assembly of Cranes





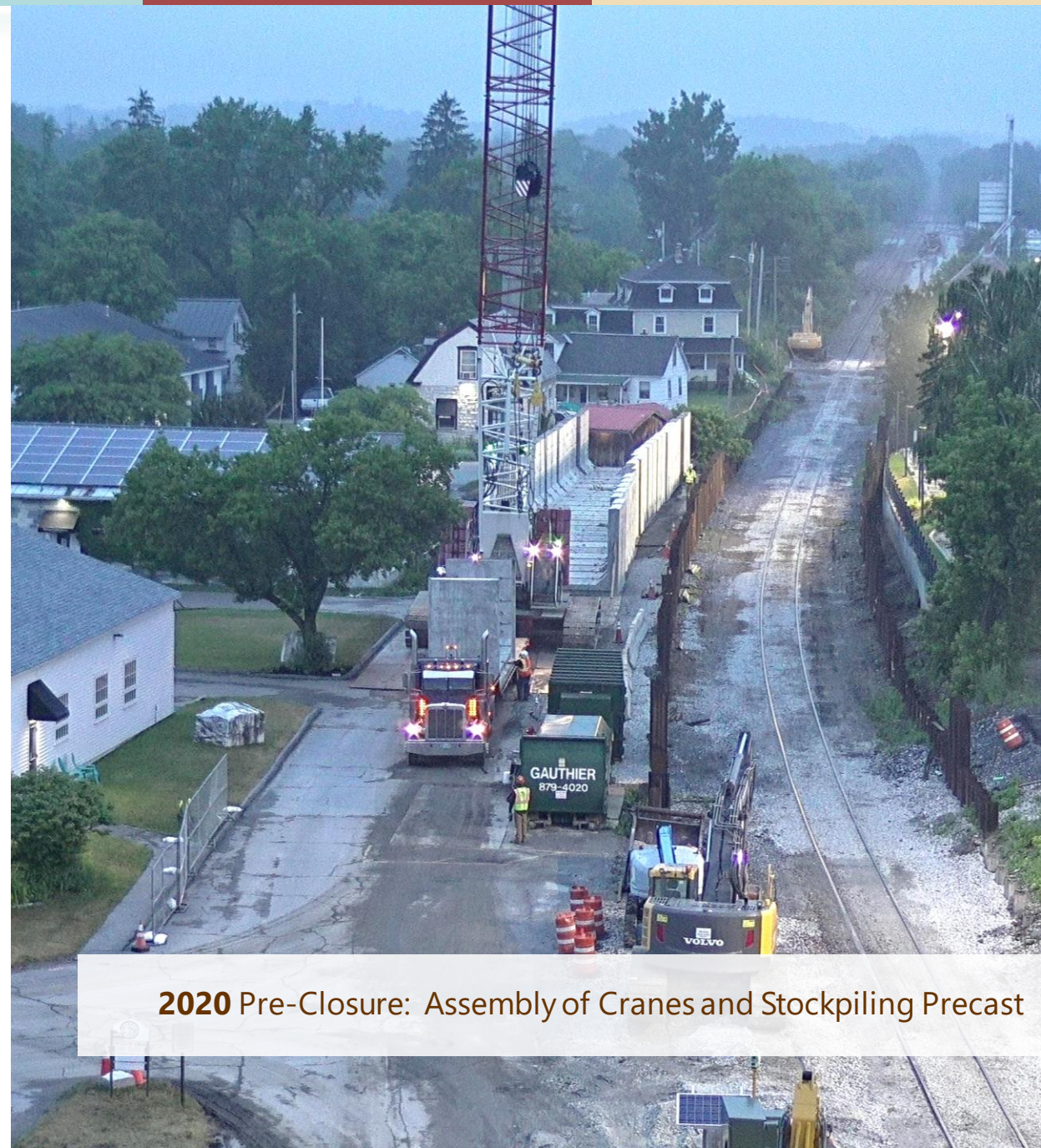
2017

2018

2019

2020

2021



**2020** Pre-Closure: Assembly of Cranes and Stockpiling Precast



## 2020 Main Roadway Closure Dates

- Merchants Row: May 28 – September 21, 2020
- Main Street: July 13 – September 21, 2020
- Main Street footbridge: July 13, 2020 (the footbridge will not be replaced)
- Printer's Alley: July 13 – September 21, 2020

# Closure Initiation: July 13

- Main Street closed to thru traffic between Bakery Lane/Mill Street and North Pleasant Street
- Cross-town traffic detoured to Cross Street
- Shuttlebury continuous-loop downtown pedestrian shuttle service begins
- Neighbors Together wayfinding signage directs motorists and pedestrians to downtown parking and businesses
- Main Street temporary bridge and footbridge removed
- 24 hour a day/7 day a week construction begins



**OPEN FOR BUSINESS!**



# Closure Construction: Phase 1 Activities (July 13 – July 23\*)

- Rail corridor excavated to a depth of between 4 feet and 12 feet
- Approx. 6 trucks/hour haul excavated soil to Fifield Farm marshaling yard from Water Street and Seymour Street
- Support of excavation installed in excavated areas
- Remaining ledge underneath Main Street Bridge removed through blasting
- Stormwater pipe installed underneath rail corridor between bridges
- LED lights illuminate rail corridor at night

\*All dates are approximate and depend on weather, unexpected construction challenges, and other factors.





# Closure Construction: Phase 2 Activities (July 23 – Aug 13\*)

- Downtown tunnel and u-walls north and south of the tunnel installed
- Six flatbed trucks continuously haul precast concrete from Fifield Farm south marshaling yard to central downtown
- All parking on South Main Street between Ralph Myhre Golf Course and Academy Street temporarily suspended
- Trucks hauling precast back down Main Street from the roundabout, creating brief but regular traffic halts at the intersection of Cross Street and Main Street
- Cranes set precast concrete from Triangle Park, upper Merchants Row, Marble Works, Seymour Street and rail corridor

\*All dates are approximate and depend on weather, unexpected construction challenges, and other factors.





# Closure Construction: Phase 3 Activities (Aug 14 – Sept 21\*)

- Trucks haul excavated soil from Fifield Farm south marshaling yard to central downtown to backfill tunnel and u-walls
- Main Street and Merchants Row roadways and sidewalks rebuilt
- Rail corridor rebuilt

\*All dates are approximate and depend on weather, unexpected construction challenges, and other factors.





# September 21, 2020: What's been done at this point?

- Main Street and Merchants Row open to thru traffic
- Merchants Row remains one way up the hill
- Battell driveway reopened
- Downtown parking on Main Street and in front of the Battell Block restored
- Printer's Alley reopened to pedestrians but not yet to motorists



# Community Challenges

- Traffic congestion at Cross Street intersections with Court Street and Main Street
- No direct pedestrian access across rail corridor downtown
- Main Street restricted to emergency services vehicles and deliveries to downtown businesses
- 24 hour a day/7 day a week construction: lights, noise, dust



# Downtown Parking Availability

- 11 spaces in front of the Post Office with 15-minute limit
- Upper and lower municipal lot with 2-hour time limit
- 12 parking spaces in upper municipal lot recommended for seniors and families with small children
- Mill Street and Academy Street lots
- Franklin Street now one way with parallel parking alongside park



2017

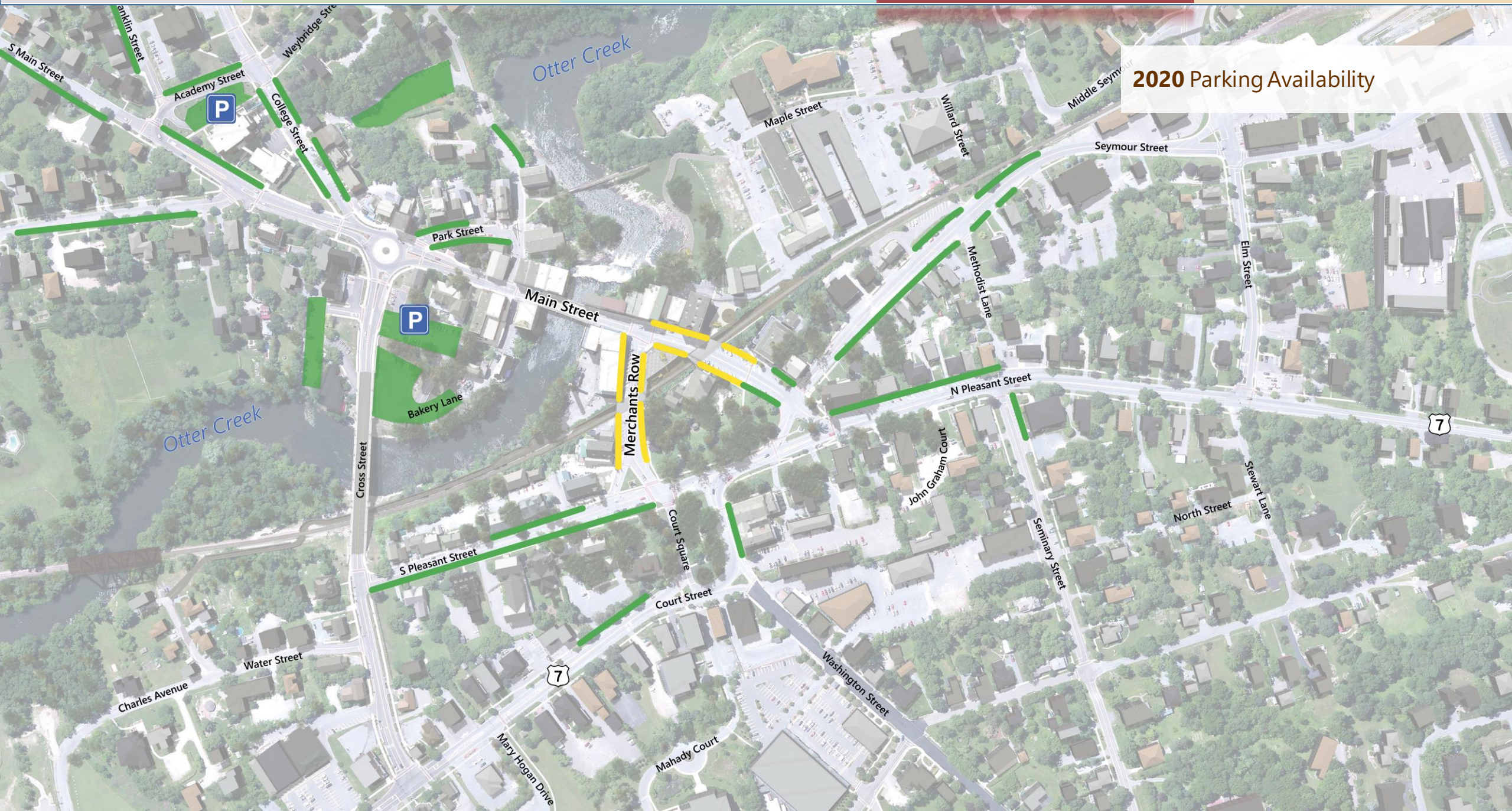
2018

2019

2020

2021

## 2020 Parking Availability









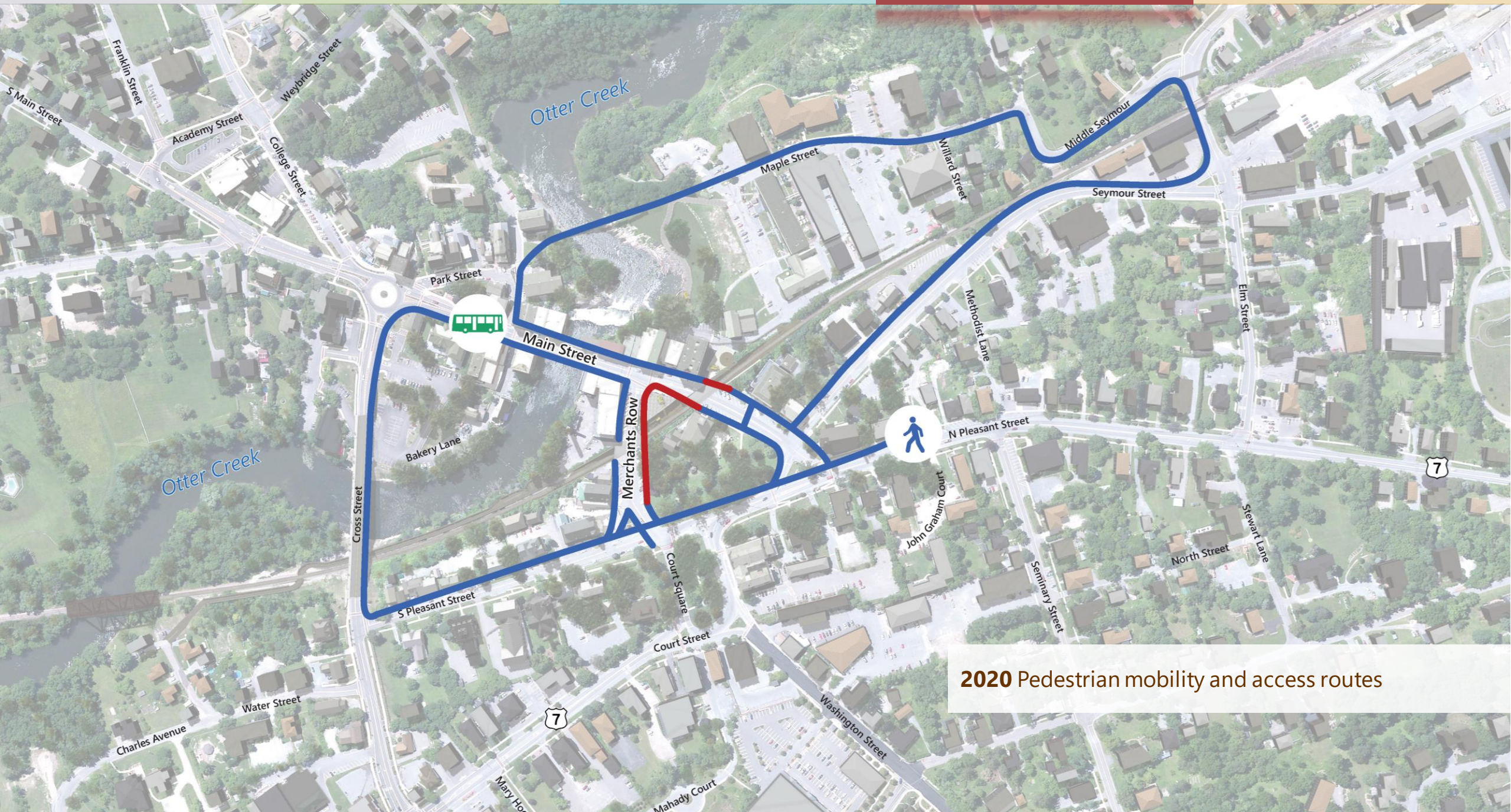
2017

2018

2019

2020

2021



**2020** Pedestrian mobility and access routes



2017

2018

2019

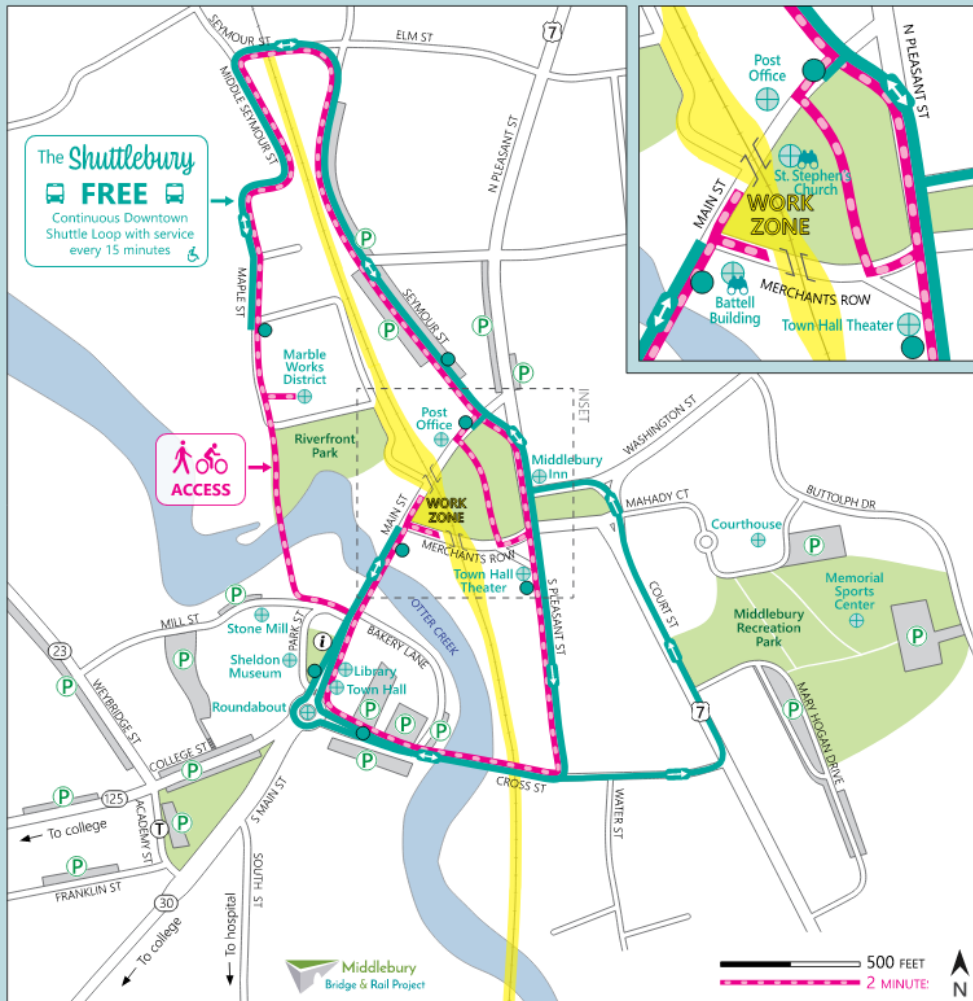
2020

2021

# GET DOWN TOWN {around}

- Pedestrian and Bicycle Access
- The Shuttlebury FREE Downtown Shuttle
- Shuttlebury Route
- Shuttlebury Stops
- Public Parking
- Transit Hub
- Information Booth
- Landmarks
- Observation Zone

Downtown Middlebury is **OPEN FOR BUSINESS** during bridge/road closures!



experiencemiddlebury.com



MIDDLEBURY MONEY

GREAT MIDDLEBURY PIG OUT



# Post-Closure Activity: October – December 2020

- Final construction of rail corridor
- U-wall cast-in-place concrete caps and decorative railing installed
- Fencing installed
- Triangle Park and Lazarus Park graded and some initial plantings



## 2020 Post-Closure Impacts

- Intermittent short-term lane closures on Main Street and Merchants Row to facilitate site grading and landscaping
- Triangle Park remains closed for landscaping
- Temporary sidewalk closures for sidewalk reconstruction



# 2021 Construction Activities and Project Completion

- Printer's Alley/Lazarus Park and Triangle Park reconstruction
- Final paving
- Landscaping
- Project cleanup and completion!



2017

2018

2019

2020

2021

**2021** Project completion





2017

2018

2019

2020

2021

**2021** Project completion





2017

2018

2019

2020

2021

**2021** Project completion





2017

2018

2019

2020

2021

**2021** Project completion





2017

2018

2019

2020

2021

**2021** Project completion



LINCOLN BROWN ILLUSTRATION





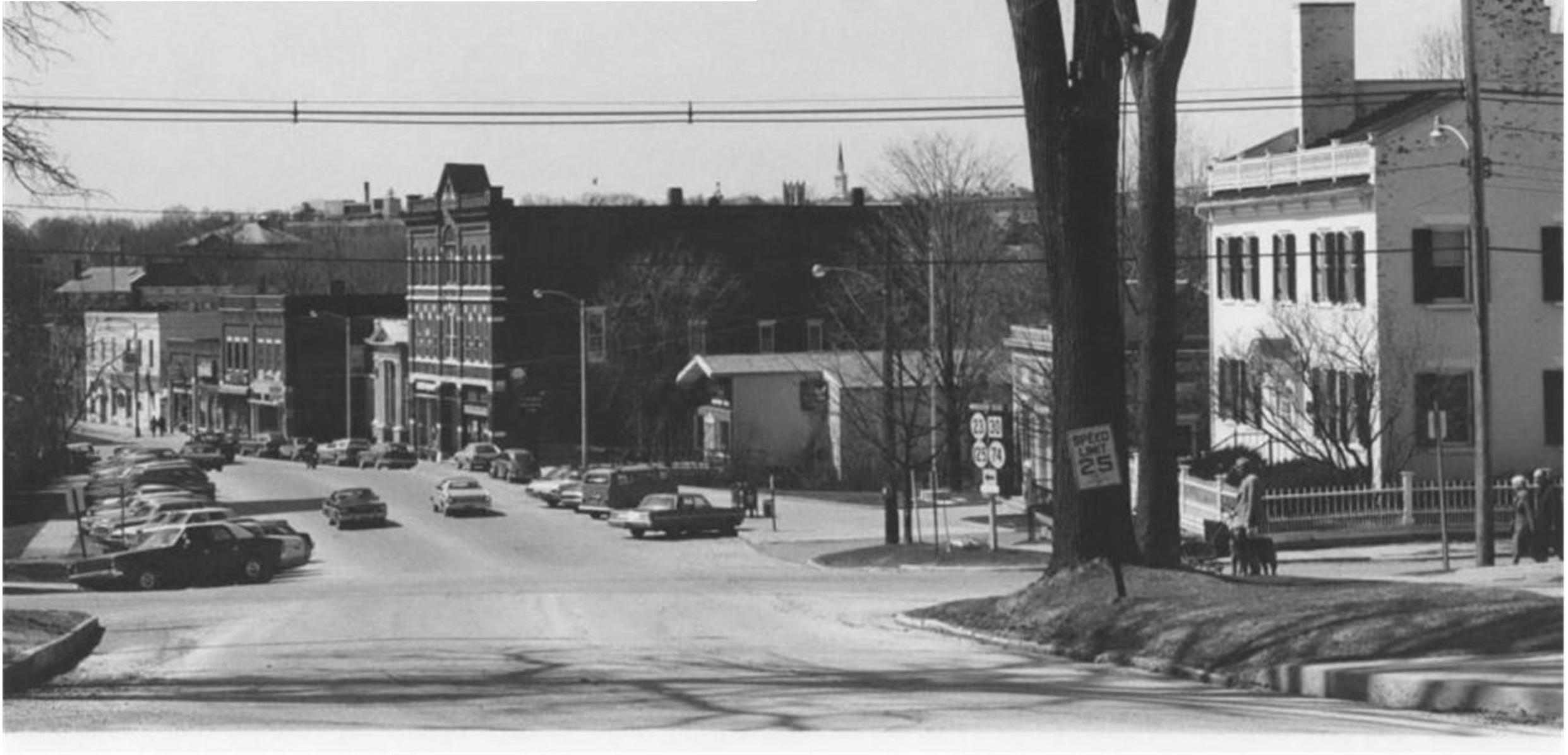
# Middlebury Village Historic District National Register Nomination

- This two-phase project will result in an update to the existing Middlebury Village Historic District, which was listed in the National Register in 1976 and updated in 1980
- The new version will have more detail and will be a better tool for understanding the history and significance of Middlebury Village





**1976** Photograph from the existing National Register nomination







# Middlebury Village Historic District National Register Nomination

- Phase 1 of the project is a survey of the village to record information about the history and architecture of each building within the historic district and in neighborhoods next to the existing district
- The survey effort will result in the documentation of over 400 historic resources within Middlebury Village

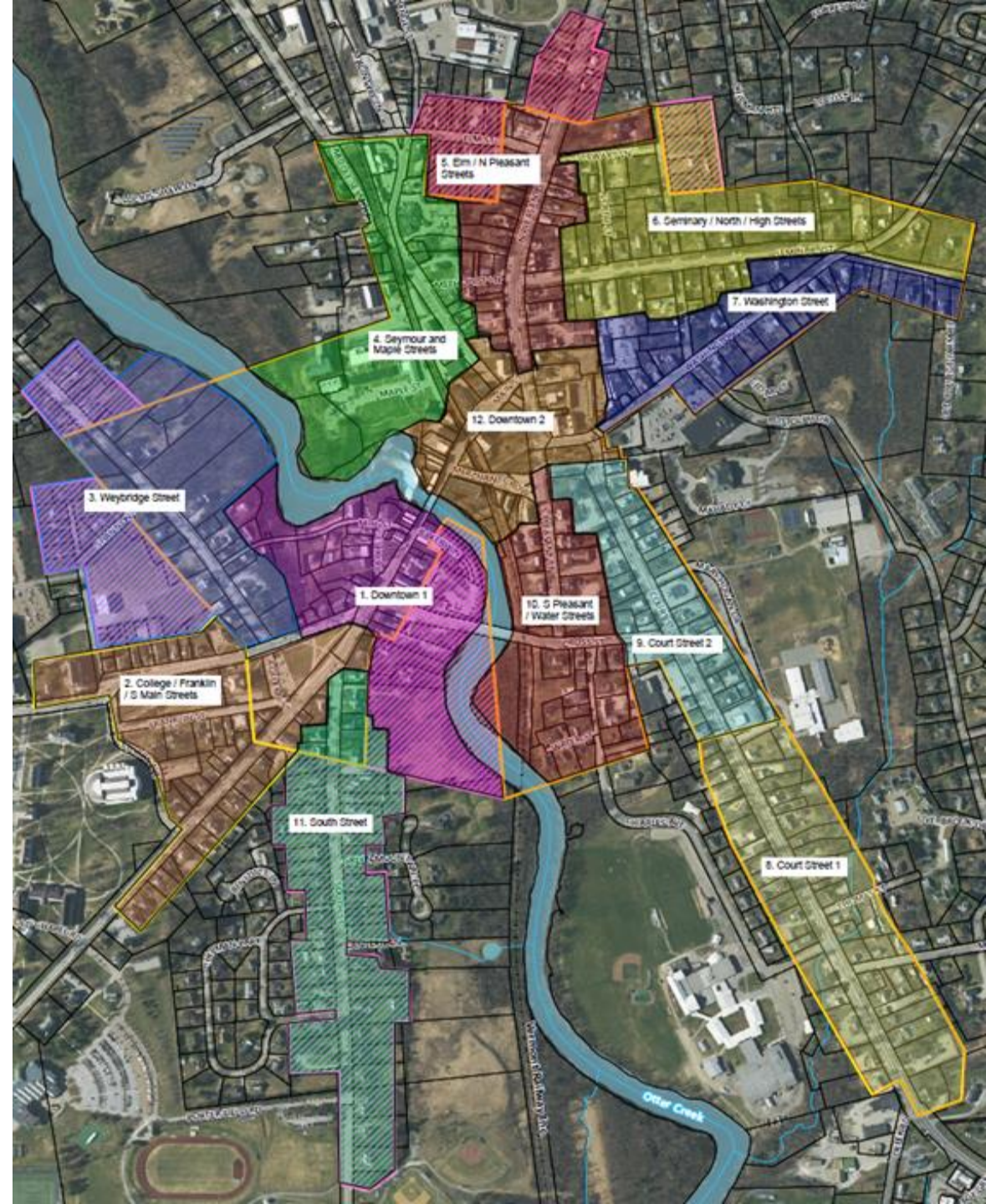






# Middlebury Village Historic District National Register Nomination

- VHB will use the survey to determine if the district boundary needs to be expanded to include neighborhoods that are architecturally and historically significant components of the village
- Phase 2 of the project is the completion of the updated National Register nomination which will incorporate information from the survey







# Middlebury Village Historic District National Register Nomination

- The National Register of Historic Places is the official list of the Nation's historic places worthy of preservation. It is part of a national program to coordinate and support public and private efforts to identify, evaluate, and protect America's historic and archeological resources.
- The National Register program is administered by the National Park Service through the Vermont Division for Historic Preservation, in coordination with local property owners and communities.





# Middlebury Village Historic District National Register Nomination

- Since our first listing in 1966, more than 12,000 buildings, sites, structures, objects, and districts in Vermont have been listed in the National Register.
- To qualify for listing, a property must be historically significant and retain sufficient integrity to convey its significance. National standards and criteria for evaluation are utilized to study each property.
- A property does not have to be big and fancy or the home of someone famous to be eligible for the National Register. Factories, bridges, worker housing, and industrial sites can all be listed in the National Register.





# vtrans.vermont.gov/projects/middlebury

http://vtrans.vermont.gov/projects/middlebury

VERMONT OFFICIAL STATE WEBSITE



STATE OF VERMONT

## Agency of Transportation

SEARCH

CONTACT

About the Project

Schedule

Documents Library

FAQs

Contact Us



### ABOUT THE PROJECT

The Vermont Agency of Transportation (VTrans), in collaboration with the Town of Middlebury, is undertaking a project to replace two nearly 100 year old rail bridges in the center of Middlebury with a tunnel by the summer of 2020. The two bridges are about 300 feet apart, with one located on Main Street/VT 30 and the other on Merchants Row.

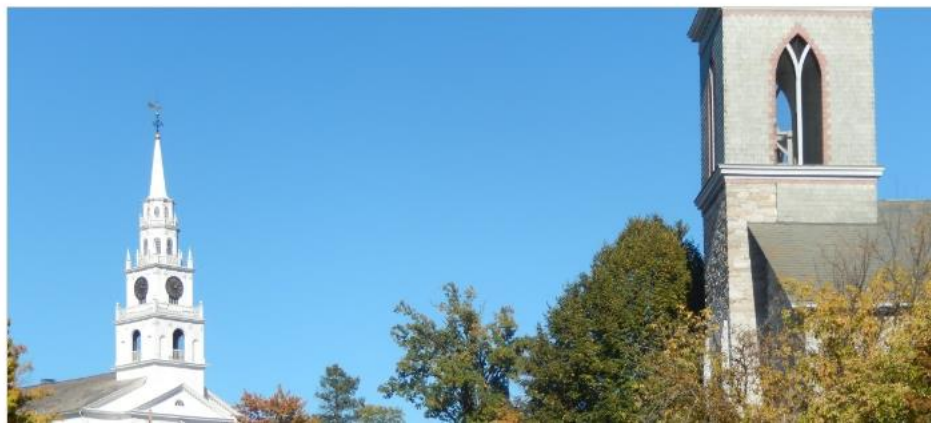
### Project Status Update

#### November:

Public Meeting: November 17<sup>th</sup> at Town Hall Theater, Middlebury

#### December:

Tree clearing along rail line scheduled.







# Thank You to the Middlebury Community!

*From the entire project team, thank you to the Middlebury community for your patience, positive attitude, and hospitality during this project. It has been such a pleasure to work in this town!*





# Project Questions

**Public Input Encouraged!**

