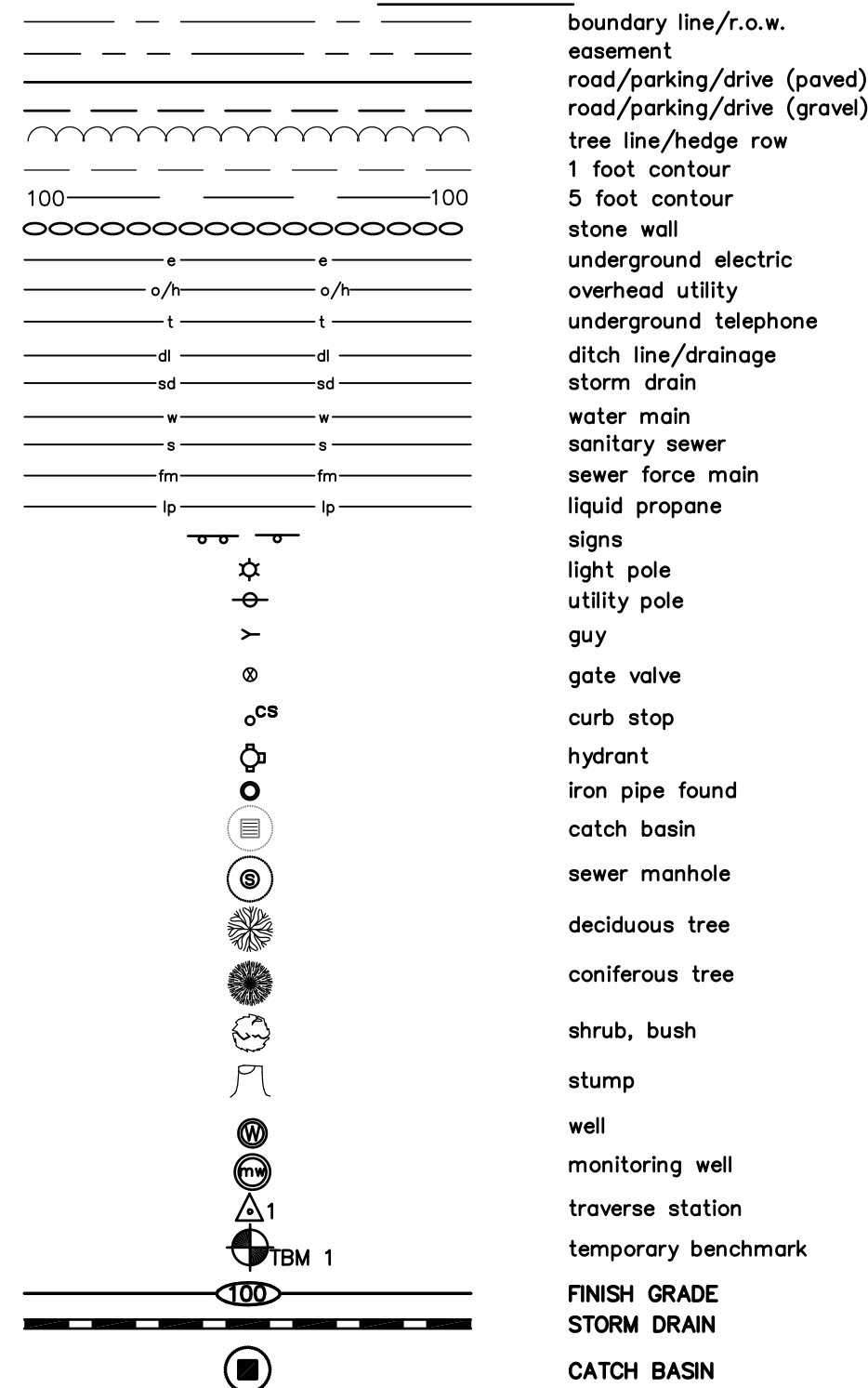


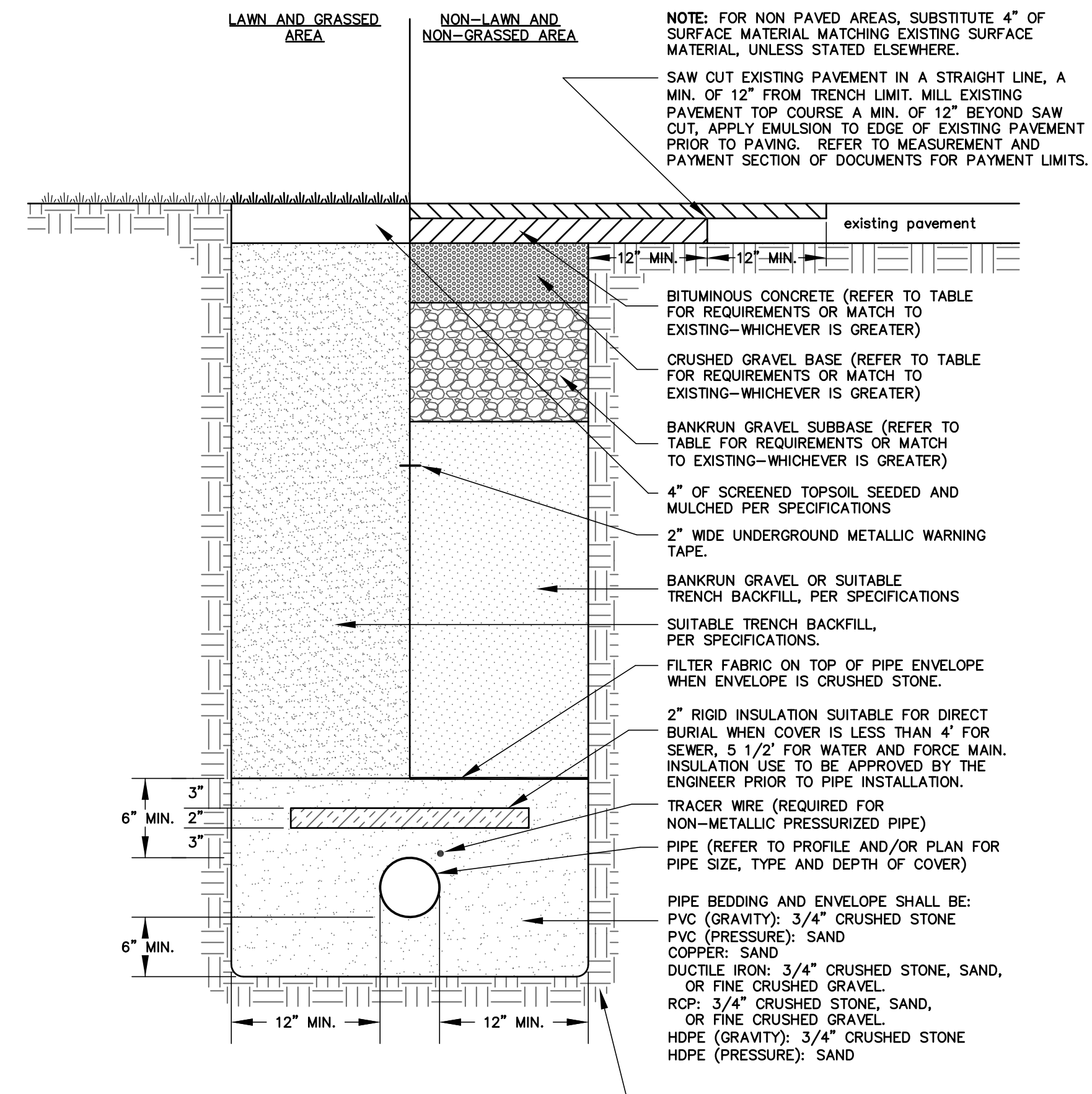
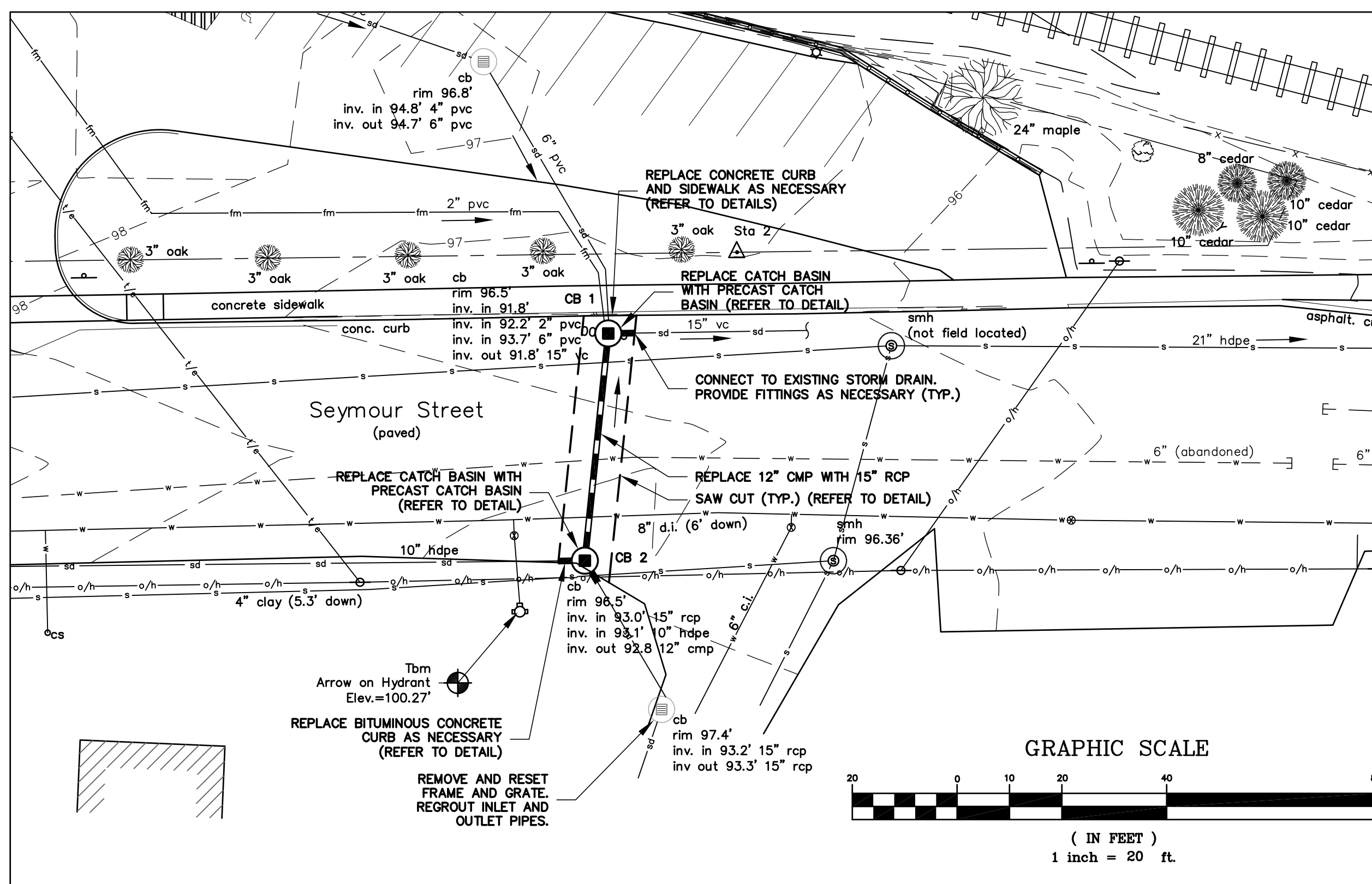
GENERAL NOTES

- THESE PLANS ARE BASED ON DATA FROM THE FOLLOWING SOURCE:
A. PLAN TITLED "NATIONAL BANK OF MIDDLEBURY DRIVE THRU SEYMOUR STREET, MIDDLEBURY, VERMONT", PREPARED BY OTTER CREEK ENGINEERING, INC. DATED 4/27/06
- ELEVATION IS BASED ON AN ASSUMED DATUM OF 100.00 AT STATION 1.
- COORDINATE SYSTEM IS BASED ON AN ASSUMED 5000N,5000E BASE POINT AND MAGNETIC NORTH AT TIME OF SURVEY.
- FOR CLARITY, TEXT DENOTING EXISTING ITEMS IS SHOWN IN LOWER CASE, AND TEXT DENOTING PROPOSED ITEMS IS UPPERCASE AND BOLD.
- REFER TO LEGEND LOCATED ON THIS SHEET FOR SYMBOL DESIGNATIONS.
- ALL UNDERGROUND UTILITIES ARE SHOWN AS APPROXIMATE LOCATIONS.
- FOR CLARITY, OVERHEAD LINES ARE NOT SHOWN.
- THIS IS NOT A BOUNDARY SURVEY.

LEGEND

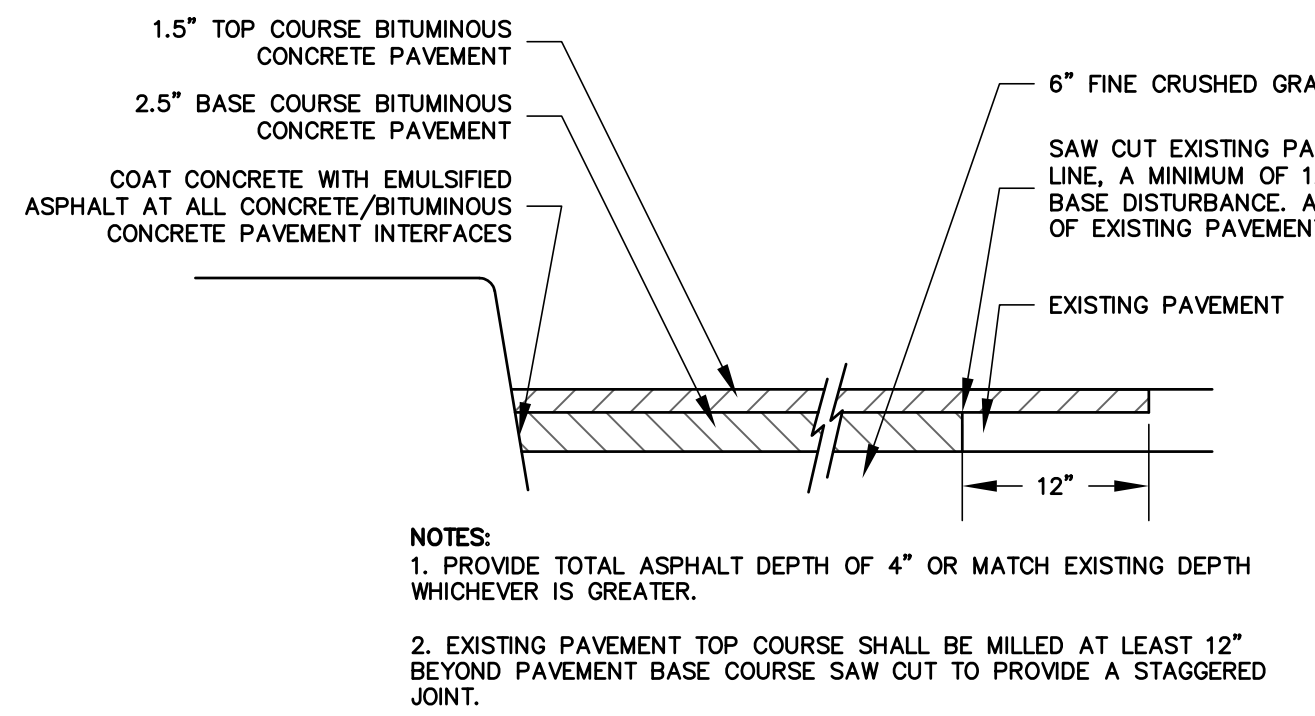
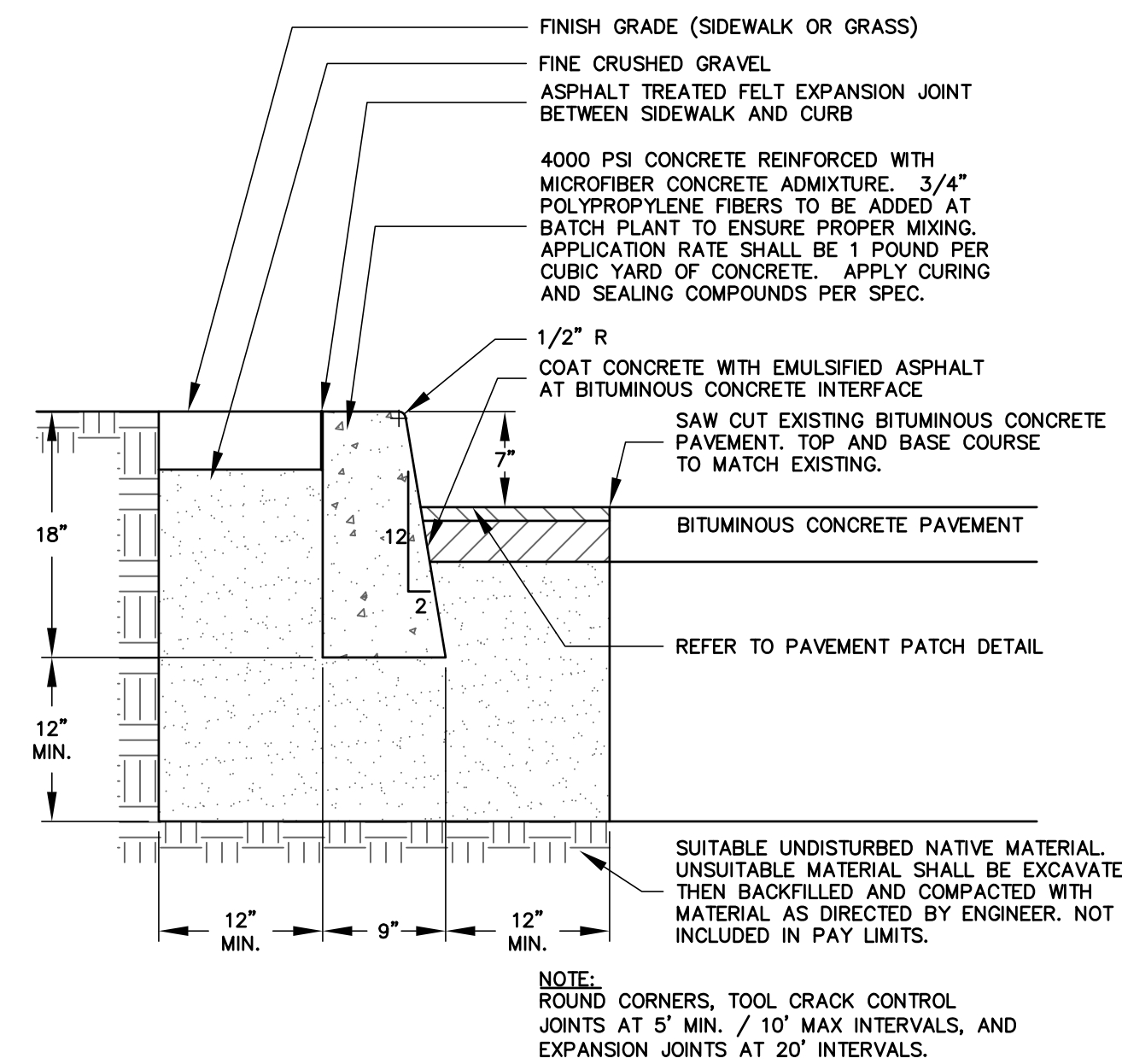
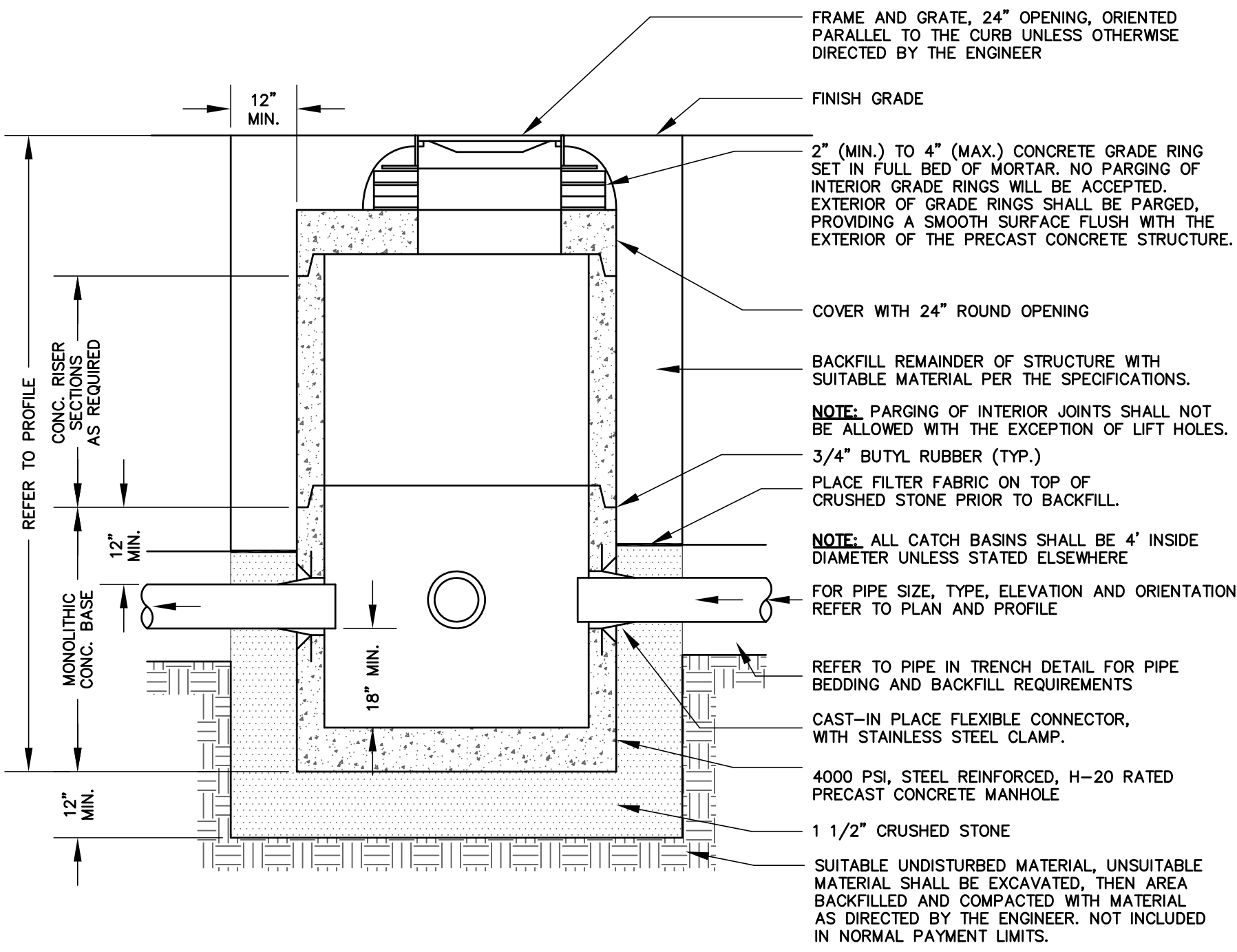
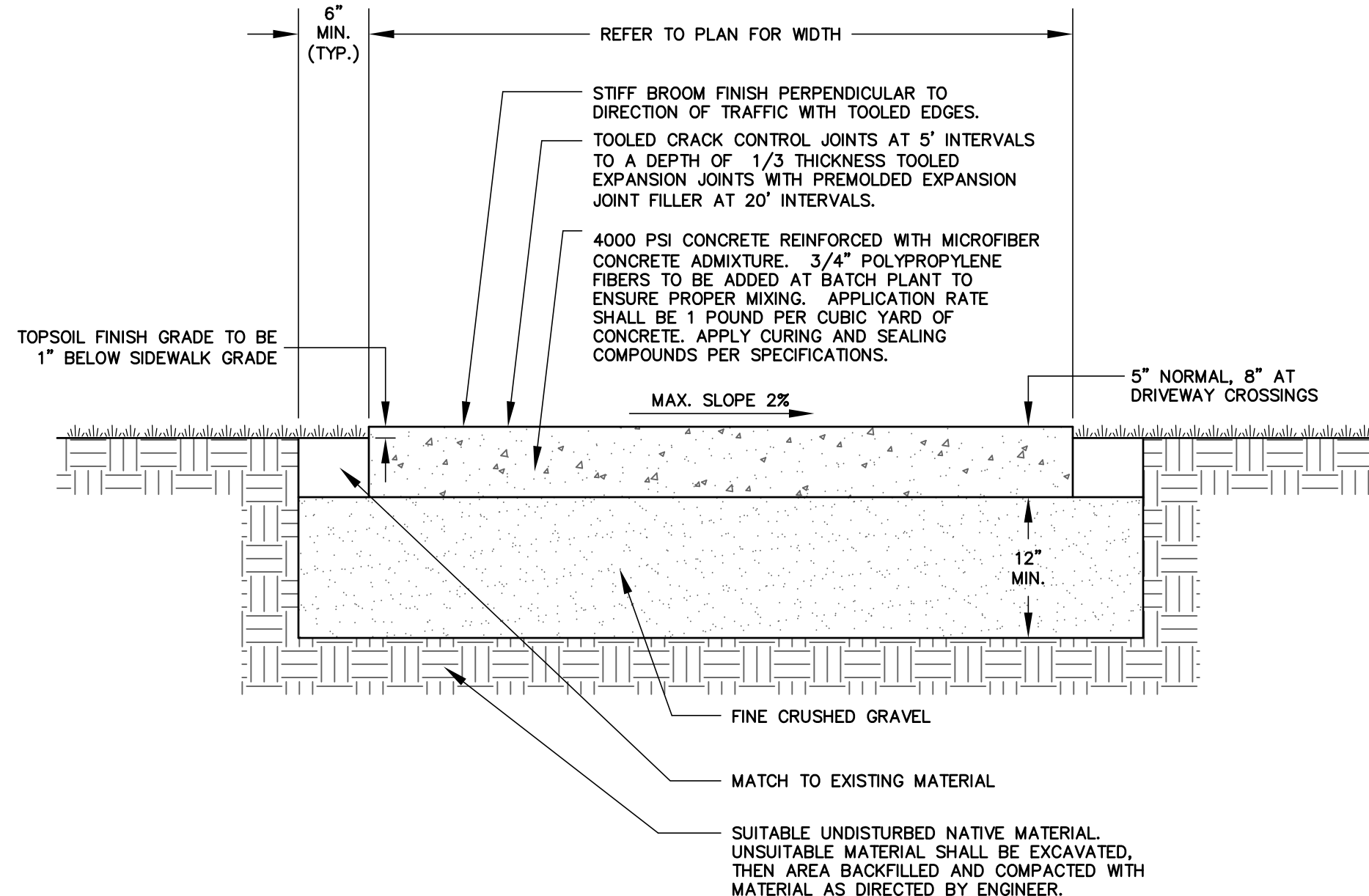
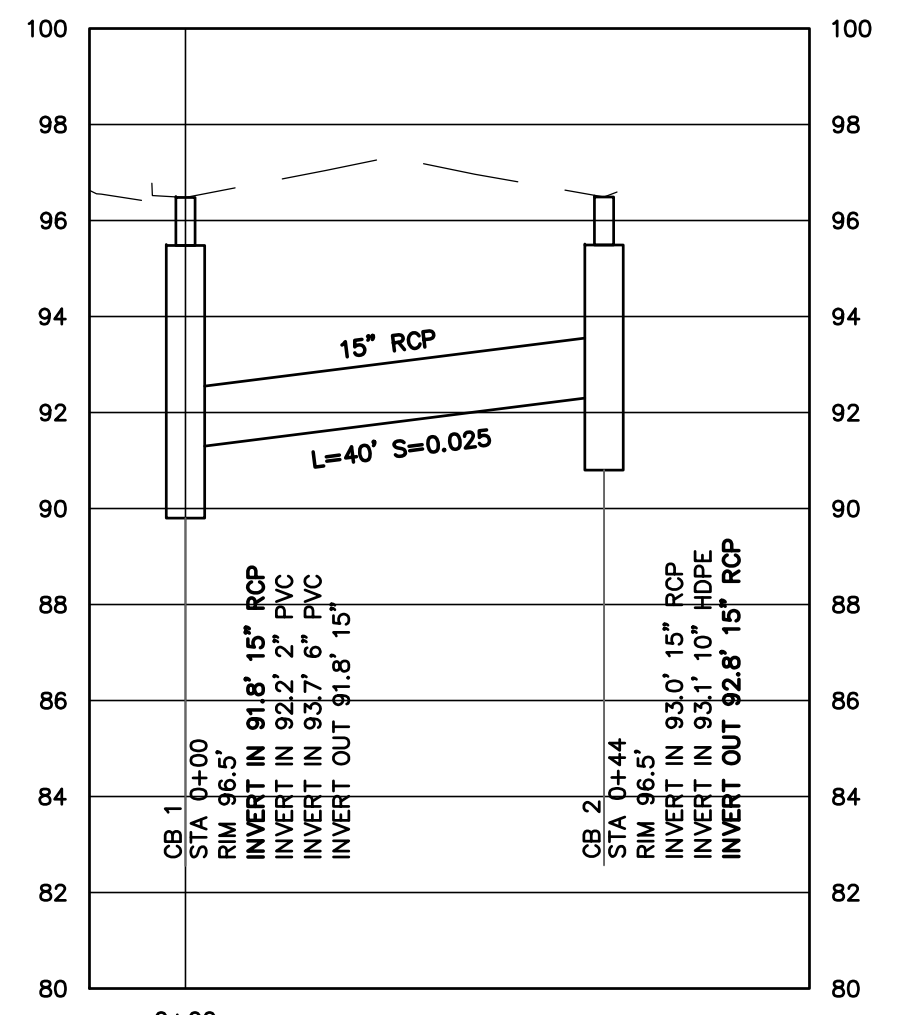


NOTE: TEXT DENOTING EXISTING ITEMS IS SHOWN IN LOWER CASE, AND TEXT DENOTING PROPOSED ITEMS IS UPPERCASE AND BOLD.



TRENCH RESTORATION TABLE

LOCATION	BITUMINOUS PAVEMENT (THICKNESS/TYPE)	CRUSHED GRAVEL BASE	BANKRUN SUBBASE
TOWN ROADS	TOP: 1.5"/TYPE 4 (3/8") BASE: 2.5"/TYPE 2 (3/4")	6"	12"



BITUMINOUS CONCRETE CURB DETAIL
NOT TO SCALE

OTTER CREEK ENGINEERING
404 East Main Street
P.O. Box 712
East Middlebury, VT 05740
Telephone: 802-382-8522
Fax: 802-382-8440

110 Merchants Row
4th Floor, Suite 15
Rutland, VT 05701
Telephone: 802-747-3080
Fax: 802-747-4820
E-mail: info@ottercreek.com

STATE OF VERMONT
LICENSED PROFESSIONAL ENGINEER
DESIGN ENGINEER

THESE DRAWINGS SHALL NOT BE ALTERED IN ANY WAY WITHOUT THE WRITTEN APPROVAL OF THE ENGINEER. ANY REVISIONS SHALL BE MADE BY THE ENGINEER AND NOTED IN THE REVISION BLOCK. © 2019

OTTER CREEK ENGINEERING, INC.

GRID NORTH

**TOWN OF MIDDLEBURY
SEYMOUR STREET
DRAINAGE REPAIR
MIDDLEBURY, VERMONT**

CONSTRUCTION
DATE ISSUED: 6/24/19
REVISIONS:
DRAWN BY: BB
CHECKED BY: BFR
SCALE: SHOWN
PROJECT NO.: 001.048
CADD FILE: 001-048

SITE PLAN AND DETAILS

DRAWING NO. **C-1**